

New Jersey's Clean Energy Program Report
Submitted to the
New Jersey Board of Public Utilities

Reporting Period:
Year-to-Date through Fourth Quarter 2011
(January 1, 2011 through December 31, 2011)

Table of Contents

I. Executive Summary.....	1
II. Introduction.....	7
III. 2011 Program Activity vs. Goals.....	9
Residential HVAC – Electric and Gas.....	10
Residential New Construction.....	11
Energy Efficient Products.....	12
Home Performance with ENERGY STAR®.....	15
Comfort Partners.....	17
C&I New Construction.....	18
C&I Retrofit.....	19
Local Government Energy Audit.....	20
Pay-for-Performance.....	21
Pay-for-Performance New Construction.....	22
Direct Install.....	23
Large Energy Users Pilot (LEUP).....	24
Renewable Energy Incentive Program (REIP).....	25
SREC Registration Program (SRP).....	26
Customer On-Site Renewable Energy (CORE).....	28
IV. 2011 Reporting Data Worksheets.....	29
Expenses vs. Budgets.....	30
Detailed Expenses.....	36
Tracking Metrics.....	42
Electric Energy Savings vs. Annual Goals.....	44
Gas Energy Savings vs. Annual Goals.....	45
Electric Energy Savings.....	46
Electric Generation - CHP.....	47
Electric Generation - Renewable Energy.....	48
Natural Gas Energy Savings.....	49
Emissions Reductions.....	50
V. Notes and Definitions.....	54

I. Executive Summary

This document reports the results of New Jersey's Clean Energy Program (NJCEP), administered by the New Jersey Board of Public Utilities' (the "Board" or "NJBPU") Office of Clean Energy. Included are financial, tracking metric, energy savings/generation and emissions reduction data for the statewide energy efficiency and renewable energy programs. The success of these programs has been well documented in previous monthly, quarterly and annual reports for 2001 through 2011. This report captures the progress of the clean energy programs in place during the period from January 1, 2011 through December 31, 2011.

In its role as NJCEP Program Coordinator Applied Energy Group, Inc. (AEG) coordinates the activities of the Office of Clean Energy, Honeywell Utility Solutions, TRC Energy Services, the NJ Economic Development Authority and New Jersey's seven investor-owned electric and natural gas utilities as related to their involvement in the operation of the programs.

Section III of this report shows 2011 program activity compared to goals. Section IV of this report includes detailed worksheets showing:

1. Expenditures compared to budgets for each program;
2. Expenditures broken down by the following specific expense categories:
 - a. Administration & Program Development
 - b. Sales, Call Centers, Marketing and Website
 - c. Training
 - d. Rebates, Grants, and Other Direct Incentives
 - e. Rebate Processing, Inspections, and Other Quality Control
 - f. Performance Incentives
 - g. Evaluation and Related Research
3. Metric tracking results from implementation of any given program.
4. Annual electric and gas energy savings compared to annual goals.
5. Annual and lifetime:
 - a. electric and natural gas energy savings and demand reductions;
 - b. CHP electric capacity and generation; and
 - c. renewable energy capacity and generation; and
6. Annual and lifetime emissions reductions for Carbon Dioxide (CO₂), Nitric Oxide (NO_x), Sulfur Dioxide (SO₂) and Mercury (Hg)

The tables presented below summarize the program results reported in more detail in Section IV. Table 1 (below) includes program budgets, actual spending year-to-date and commitments for the energy efficiency programs, the renewable energy programs, the EDA programs, the TRUE Grant and for the Office of Clean Energy program administration costs. Committed expenditures in Tables 1-5 represent firm commitments for incentives that will be paid upon project completion, which for certain programs such as the Residential New Construction and REIP programs could be up to two years after the commitment is made. Committed expenses are paid out of the budget in the year the project is completed.

Table 1: Budgets and Expenditures

Summary of 2011 Statewide Results Budget and Expenditures				
	Budget	Actual	Expenses	
			Committed	Total
Energy Efficiency (EE)	\$325,875,452.17	\$139,035,801.19	\$71,002,166.00	\$210,037,967.19
Renewable Energy (RE)	\$90,312,891.01	\$38,963,321.60	\$25,322,065.30	\$64,285,386.90
EDA Programs	\$57,634,153.38	\$6,335,017.00	\$6,475,983.00	\$12,811,000.00
OCE Administration	\$7,501,050.81	\$4,331,674.86		\$4,331,674.86
TRUE Grant	\$25,000,000.00	\$3,210,125.71	\$21,789,874.29	\$25,000,000.00
Total	\$506,323,547.37	\$191,875,940.36	\$124,590,088.59	\$316,466,028.95

Table 2 (below) includes program budgets, actual spending year-to-date, and outstanding commitments for the energy efficiency programs.

Table 2: Energy Efficiency Program Budgets and YTD Expenses

Summary of 2011 Statewide Results Energy Efficiency Program Budgets and YTD Expenditures				
Program	Budget	Actual	Expenses	
			Committed	Total
RESIDENTIAL PROGRAMS				
Residential HVAC - Electric & Gas	\$22,724,583.98	\$19,923,078.40		\$19,923,078.40
Residential New Construction	\$19,943,969.50	\$7,039,315.47	\$8,455,672.00	\$15,494,987.47
Energy Efficient Products	\$18,193,381.04	\$16,643,930.61		\$16,643,930.61
Home Performance with Energy Star	\$29,760,156.05	\$15,266,819.30	\$5,512,456.00	\$20,779,275.30
Marketing - Residential EE	\$1,309,984.00	\$1,111,985.10		\$1,111,985.10
Sub-Total: Residential Programs	\$91,932,074.57	\$59,985,128.88	\$13,968,128.00	\$73,953,256.88
RESIDENTIAL LOW INCOME				
Comfort Partners	\$30,829,308.11	\$28,405,761.97		\$28,405,761.97
Sub-Total: Residential Low Income	\$30,829,308.11	\$28,405,761.97		\$28,405,761.97
COMMERCIAL & INDUSTRIAL PROGRAMS				
C&I New Construction	\$6,867,143.41	\$2,387,636.95	\$2,430,340.00	\$4,817,976.95
C&I Retrofit	\$45,899,451.30	\$15,697,501.92	\$21,743,160.00	\$37,440,661.92
Pay-for-Performance New Construction	\$7,471,645.96	\$478,711.08	\$1,083,760.00	\$1,562,471.08
Pay-for-Performance	\$43,355,701.50	\$5,023,091.48	\$26,724,700.00	\$31,747,791.48
Combined Heat & Power (CHP)	\$1,002,122.83	\$0.00	\$1,000,000.00	\$1,000,000.00
Local Government Energy Audit	\$9,115,170.97	\$3,493,179.00	\$2,404,280.00	\$5,897,459.00
Direct Install	\$35,896,150.92	\$21,733,218.78	\$1,086,568.00	\$22,819,786.78
Teaching Energy Awareness with Children's Help (TEACH)	\$682,829.50	\$121,599.50	\$561,230.00	\$682,829.50
Marketing - Commercial & Industrial EE	\$1,075,000.00	\$1,062,330.79		\$1,062,330.79
Large Energy Users Pilot	\$20,000,000.00	\$71,596.10	\$0.00	\$71,596.10
Multi-Family Financing Pilot	\$10,000,000.00	\$0.00	\$0.00	\$0.00
Sub-Total: C&I Programs	\$181,365,216.39	\$50,068,865.60	\$57,034,038.00	\$107,102,903.60
OTHER PROGRAMS				
Green Jobs and Building Code Training	\$678,853.10	\$195,895.63	\$0.00	\$195,895.63
Competitive Grant/Loan Solicitation	\$20,000,000.00	\$0.00	\$0.00	\$0.00
Sustainable Jersey	\$1,070,000.00	\$380,149.11	\$0.00	\$380,149.11
Sub-Total: Other Programs	\$21,748,853.10	\$576,044.74	\$0.00	\$576,044.74
TOTAL Energy Efficiency Programs	\$325,875,452.17	\$139,035,801.19	\$71,002,166.00	\$210,037,967.19

Table 3 (below) includes program budgets, actual spending year-to-date, and outstanding commitments for the renewable energy programs.

Table 3: Renewable Energy Program Budgets and YTD Expenses

Summary of 2011 Statewide Results Renewable Energy Program Budgets and YTD Expenditures				
Program	Budget	Actual	Expenses	
			Committed	Total
RENEWABLE PROGRAMS				
Customer On-Site Renewable Energy (CORE)	\$22,623,674.18	\$13,139,812.21	\$6,045,121.40	\$19,184,933.61
Clean Power Choice	\$68,400.00	\$29,209.40		\$29,209.40
Offshore Wind	\$11,070,253.00	\$2,633,211.00	\$8,437,042.00	\$11,070,253.00
Renewable Energy Program: Grid Connected (REDI)	\$11,282,831.73	\$0.00	\$3,856,320.00	\$3,856,320.00
Renewable Energy Incentive Program	\$41,612,455.10	\$21,336,854.39	\$5,152,540.50	\$26,489,394.89
Edison Innovation Clean Energy Fund (CST)	\$3,655,277.00	\$1,824,234.60	\$1,831,041.40	\$3,655,276.00
TOTAL Renewable Energy Programs	\$90,312,891.01	\$38,963,321.60	\$25,322,065.30	\$64,285,386.90

Table 4 (below) includes program budgets, actual spending year-to-date, and outstanding commitments for the EDA programs.

Table 4: EDA Program Budgets and YTD Expenses

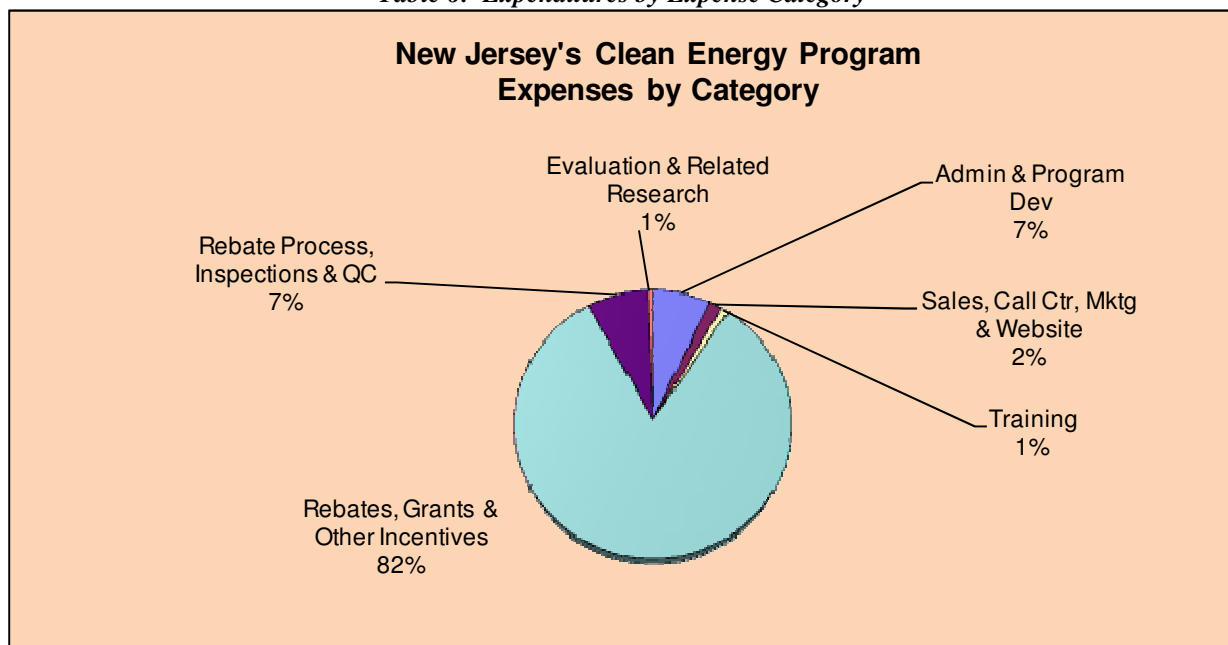
Summary of 2011 Statewide Results EDA Program Budgets and YTD Expenditures				
Program	Budget	Actual	Expenses	
			Committed	Total
EDA PROGRAMS				
Edison Innovation Clean Energy Manufacturing Fund (CEMF)	\$35,634,153.38	\$5,915,017.00	\$6,475,983.00	\$12,391,000.00
Edison Innovation Green Growth Fund (EIGGF)	\$4,000,000.00	\$60,000.00	\$0.00	\$60,000.00
EE Revolving Loan Fund (EERLF)	\$18,000,000.00	\$360,000.00	\$0.00	\$360,000.00
TOTAL Renewable Energy Programs	\$57,634,153.38	\$6,335,017.00	\$6,475,983.00	\$12,811,000.00

The Office of Clean Energy (OCE) strives to minimize administration costs thereby maximizing the percentage of funding spent on direct incentives for the installation of energy efficiency and renewable energy measures. Table 5 (below) compares the OCE's actual expenditures with its approved budget for program oversight.

Table 5: Office of Clean Energy Program Oversight Expenses

Summary of 2011 Statewide Results Office of Clean Energy Program Oversight Expenses		
	Budget	Actual
Administration and Overhead Expenses	\$3,545,482.04	\$3,265,285.80
Memberships-Dues	\$158,817.00	\$131,196.00
Evaluation and Related Research Expenses	\$3,673,979.46	\$935,193.06
Marketing and Communications Expenses	\$122,772.31	\$0.00
TOTAL OCE Program Oversight	\$7,501,050.81	\$4,331,674.86

Table 6: Expenditures by Expense Category



As shown in Table 6 (above), 82% of 2011 program expenditures were for rebates, grants and other incentives, and an additional 7% were for rebate processing and inspections. The former includes rebates and other direct incentives paid to participating customers, along with the cost of any measures installed in customer homes, and any payments made pursuant to any NJCEP grant. The latter are those costs incurred in processing and tracking rebate, grant and other program applications and payments, and in inspecting qualified projects to ensure compliance with program requirements and other quality control measures

The worksheets provided in Section IV include detailed energy savings data, Combined Heat and Power (CHP) generation data and renewable energy generation data by program. The annual and lifetime savings/generation data are for measures installed during 2011. Savings include reductions in electric energy and natural gas usage as well as reductions in electric capacity requirements. CHP and renewable energy generation include both electric generation and capacity.

Annual savings/generation is equal to the annual savings/generation of any measure installed during 2011. The lifetime savings/generation is the expected savings/generation over the expected life of a measure installed in 2011. Measure lives range from 6 years for certain lighting such as CFLs to 25 years for renewable energy systems and new home measures.

Table 7 (below) summarizes annual and lifetime energy savings, CHP generation and renewable energy generation from measures installed in 2011.

Table 7: Energy Savings/Energy Capacity and Generation

Summary of 2011 Statewide Results Energy Savings/Energy Capacity and Generation			
	<u>Actual</u>	<u>Committed</u>	<u>Total</u>
<u>Demand</u>			
kW Reduced (EE)	129,666	144,692	274,358
kW Installed (Capacity)			
Combined Heat and Power	0	300	300
Renewable Energy (RE)	318,388	595,085	913,473
<u>Annual</u>			
MWh Saved (EE)	453,681	229,969	683,650
Dekatherms Saved (EE)	782,557	674,807	1,457,363
MWh Generated			
Combined Heat and Power	0	2,455	2,455
Renewable Energy (RE)	382,066	730,228	1,112,294
<u>Lifetime</u>			
MWh Saved (EE)	4,880,985	3,659,812	8,540,797
Dekatherms Saved (EE)	14,493,173	12,272,325	26,765,499
MWh Generated			
Combined Heat and Power	0	29,465	29,465
Renewable Energy (RE)	7,641,312	14,654,581	22,295,893

Reducing electric and natural gas usage and generating electricity using renewable sources of electricity reduces the greenhouse gases that would have been emitted if the saved electricity or natural gas was otherwise used or if the electricity was generated on the electric grid. CHP projects also reduce greenhouse gas emissions, since they tend to use cleaner technologies that produce fewer emissions than if the electricity was generated by the grid. Table 8 (below) summarizes the emission reductions that result from the installation of program measures.

Table 8: Summary Annual Emission Reductions

Summary of 2011 Statewide Results			
Annual Emissions Reductions			
	Electric Programs	Gas Programs	All Programs
<u>CO2 (Metric Tons)</u>			
Energy Efficiency (EE)	374,080	41,618	415,698
Renewable Energy (RE)	315,031	N/A	315,031
Total	<u>689,111</u>	<u>41,618</u>	<u>730,729</u>
<u>NOX (Metric Tons)</u>			
Energy Efficiency (EE)	309	33	342
Renewable Energy (RE)	260	N/A	260
Total	<u>570</u>	<u>33</u>	<u>603</u>
<u>SO2 (Metric Tons)</u>			
Energy Efficiency (EE)	969	N/A	969
Renewable Energy (RE)	816	N/A	816
Total	<u>1,785</u>	<u>N/A</u>	<u>1,785</u>
<u>Hg (Pounds)</u>			
Energy Efficiency (EE)	16	N/A	16
Renewable Energy (RE)	14	N/A	14
Total	<u>30</u>	<u>N/A</u>	<u>30</u>

Additional information about New Jersey's Clean Energy Program can be found at www.njcleanenergy.com.

II. Introduction

This document reports the results of the New Jersey's Clean Energy Program. With its 2001 Comprehensive Resource Analysis ("CRA") Order, the Board required the implementation of new energy efficiency programs to replace existing Demand Side Management ("DSM") programs, and the development of programs to foster new clean energy resources, such as those provided by renewable energy sources. Since 2007 the majority of the programs have been managed by the OCE through contracts with Honeywell Utility Solutions (Honeywell) and TRC Energy Services (TRC). Included in this report are financial, tracking metric, energy savings and emissions reduction data for the energy efficiency and renewable energy programs managed by Honeywell and TRC as well as New Jersey's seven investor-owned electric and natural gas utilities which continue to manage the Comfort Partners low-income program and/or the Clean Power Choice program, i.e., Atlantic City Electric Company ("ACE"), Jersey Central Power & Light Co. ("JCP&L"), Rockland Electric Company (RECO), New Jersey Natural Gas Co. ("NJNG"), Elizabethtown Gas Co. ("E-Town"), Public Service Electric & Gas Co. ("PSE&G"), and South Jersey Gas Co. ("SJG"), by the NJ Economic Development Authority, and by the Board's Office of Clean Energy. The success of these programs has been well documented in previous quarterly reports and annual reports for 2001 through 2011.

This report presents program results for calendar year 2011. The data worksheets included in Section IV have been formatted to reflect the Board's actions in adding, deleting or modifying the lineup of programs offered through that time period. In addition, the budget figures reported on those worksheets are the same as those approved by the Board in its final 2011 budget order dated November 30, 2011. Program financial results for the period from January 1, 2011 through December 31, 2011, are measured against those budgets.

The Board approved the following 2011 Clean Energy Programs:

RESIDENTIAL ENERGY EFFICIENCY PROGRAMS

Residential HVAC – Electric & Gas
Residential New Construction
Residential Energy Efficient Products (Change-A-Light & Other,
Clothes Washers, Consumer Electronics and Large Appliance Turn-In)
Home Performance with ENERGY STAR®

RESIDENTIAL LOW INCOME PROGRAMS

Comfort Partners

NONRESIDENTIAL ENERGY EFFICIENCY PROGRAMS

Commercial & Industrial New Construction
Commercial & Industrial Retrofit
Pay-for-Performance New Construction
Pay-for-Performance
Combined Heat and Power
Local Government Energy Audit
Direct Install
Teaching Energy Awareness with Children's Help (TEACH)
Large Energy Users Pilot
Multi-Family Financing Pilot

OTHER ENERGY EFFICIENCY PROGRAMS

Green Jobs and Building Code Training
Competitive Grant/Loan Solicitation
Sustainable Jersey

RENEWABLE ENERGY PROGRAMS

Customer On-Site Renewable Energy (CORE)
Clean Power Choice
Offshore Wind
Renewable Energy Program: Grid Connected (REDI)
Renewable Energy Incentive Program (REIP)
SREC Registration Program (SRP)
Edison Innovation Clean Energy Fund (CST)

EDA PROGRAMS

Edison Innovation Clean Energy Manufacturing Fund (CEMF)
Edison Innovation Green Growth Fund (EIGGF)
EE Revolving Loan Fund (EERLF)

The Board also approved several line items for Residential EE, C&I EE and RE marketing expenses. In addition, the Board approved an OCE oversight budget which includes staff salaries, Program Coordinator expenses, memberships and evaluation activities.

Following are expense and metric tracking information for each program. In addition, Section IV consists of detailed Reporting Data Worksheets that support the expense and metric tracking results.

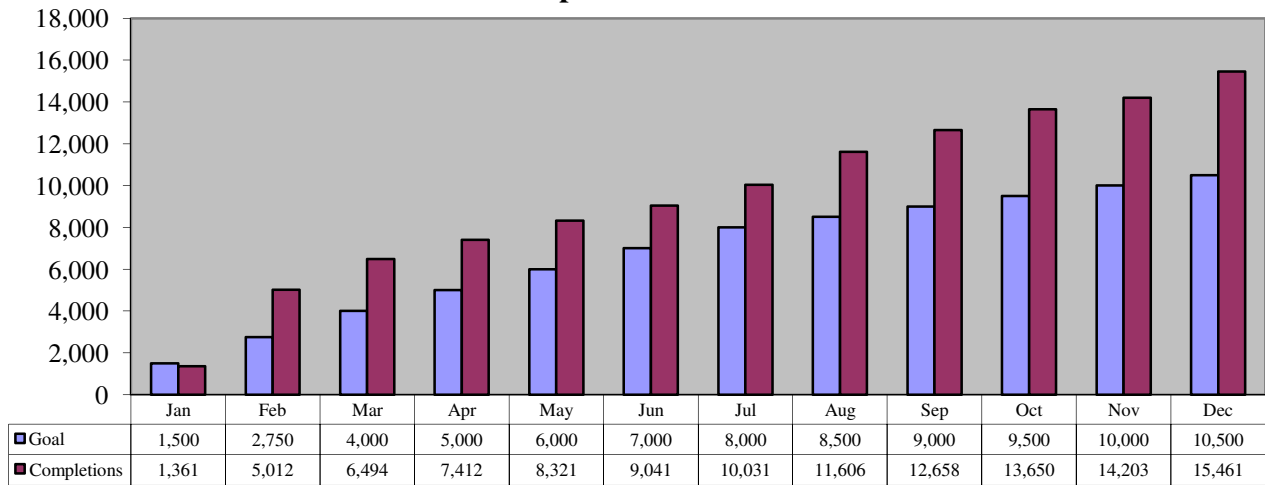
Section III

2011 Program Activity vs. Goals

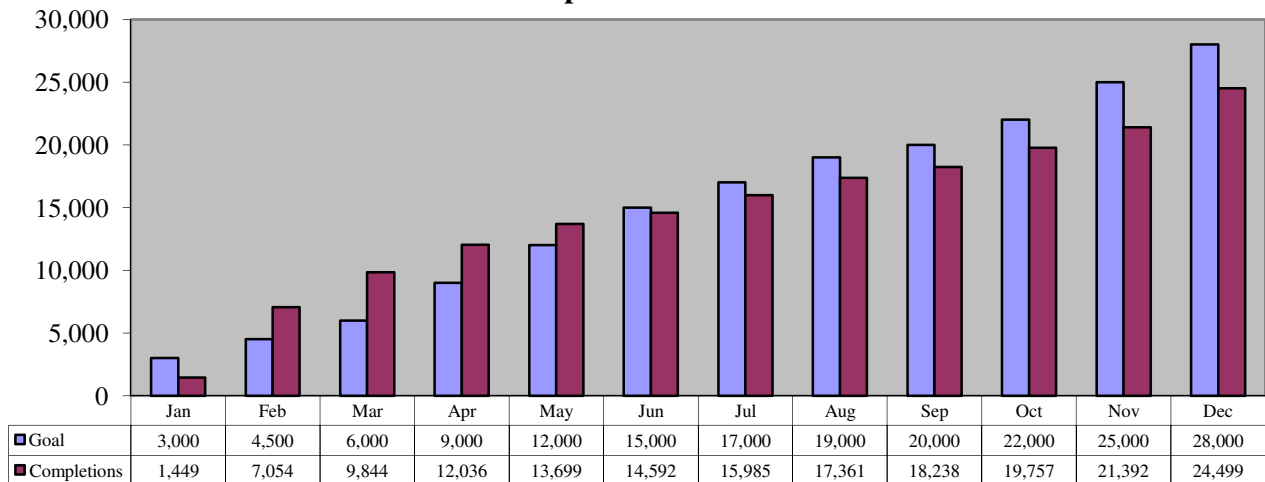
Residential HVAC - Electric and Gas

Annual Budget	Expenditures YTD	Expenditures as % of Annual Budget
\$22,724,584	\$19,923,078	87.67%

**HVAC COOLAdvantage: Statewide Results
Completions YTD**



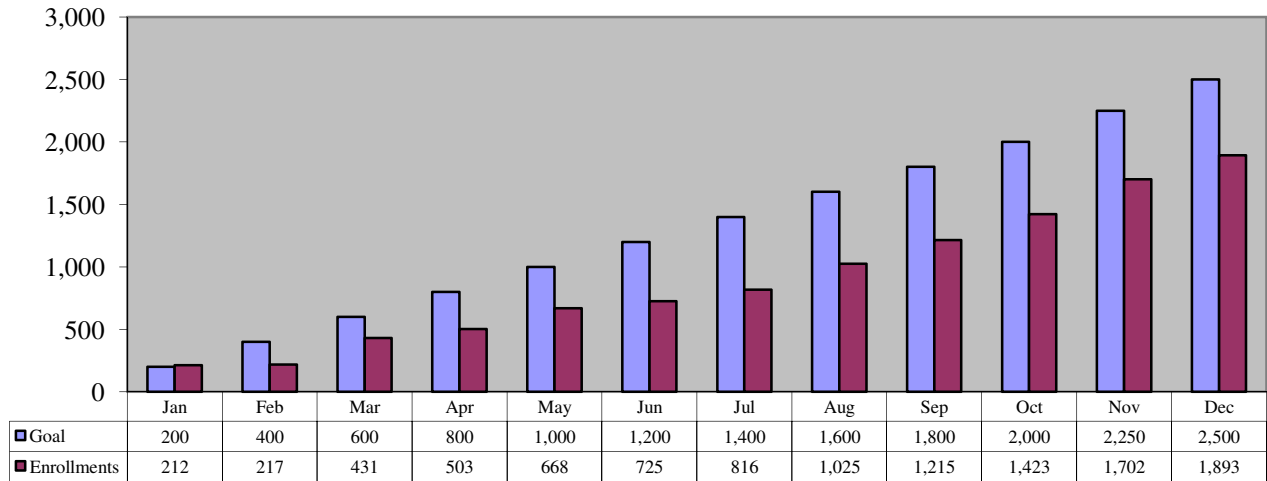
**HVAC WARMAdvantage: Statewide Results
Completions YTD**



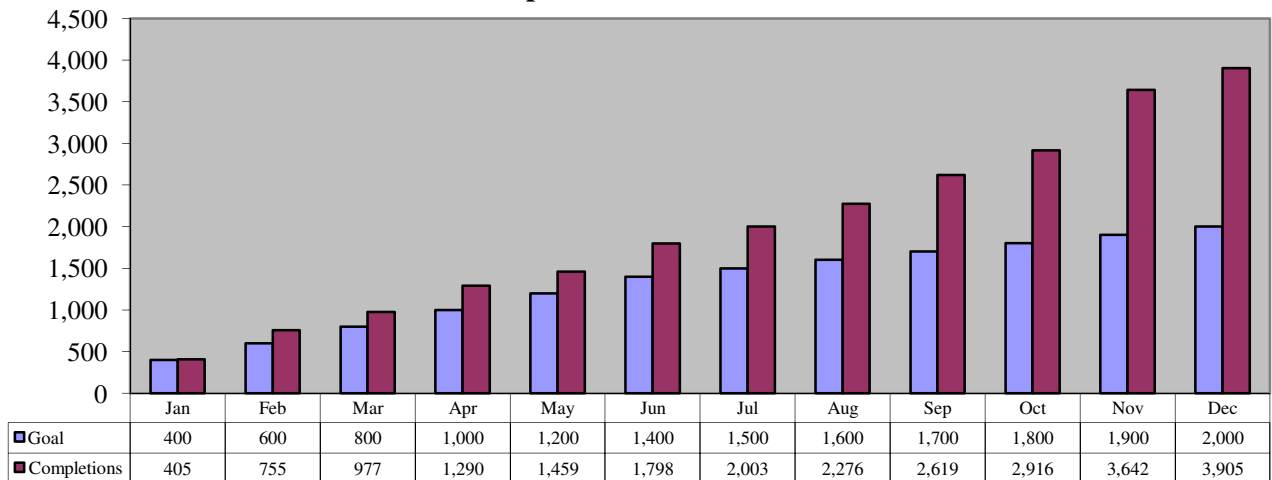
Residential New Construction

Annual Budget	Expenditures YTD	Outstanding Commitments	Expenditures as % of Annual Budget	Expenditures and Committed as % of Annual Budget
\$19,943,970	\$7,039,315	\$8,455,672	35.30%	77.69%

**Residential New Construction: Statewide Results
Program Enrollments YTD**



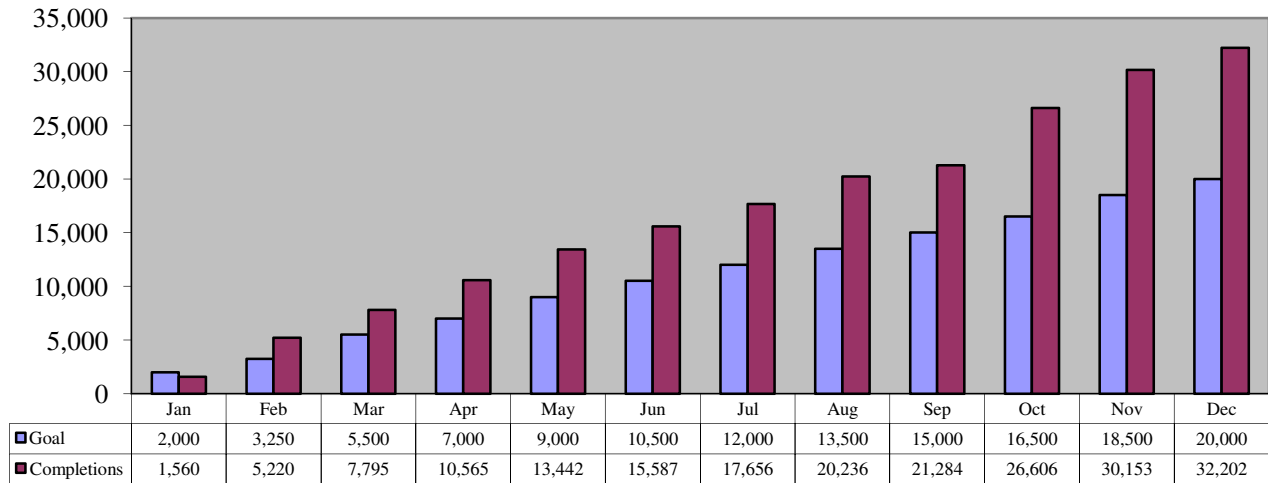
**Residential New Construction: Statewide Results
Completed Jobs YTD**



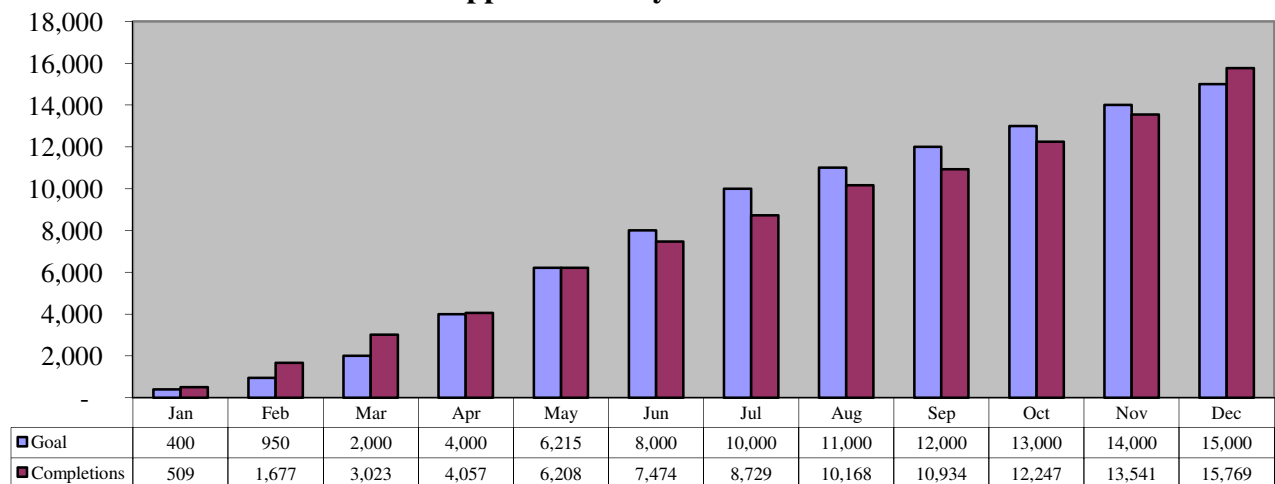
Energy Efficient Products

Annual Budget	Expenditures YTD	Expenditures as % of Annual Budget
\$18,193,381	\$16,643,931	91.48%

**Energy Efficient Products, Washer: Statewide Results
Washers Rebated YTD**

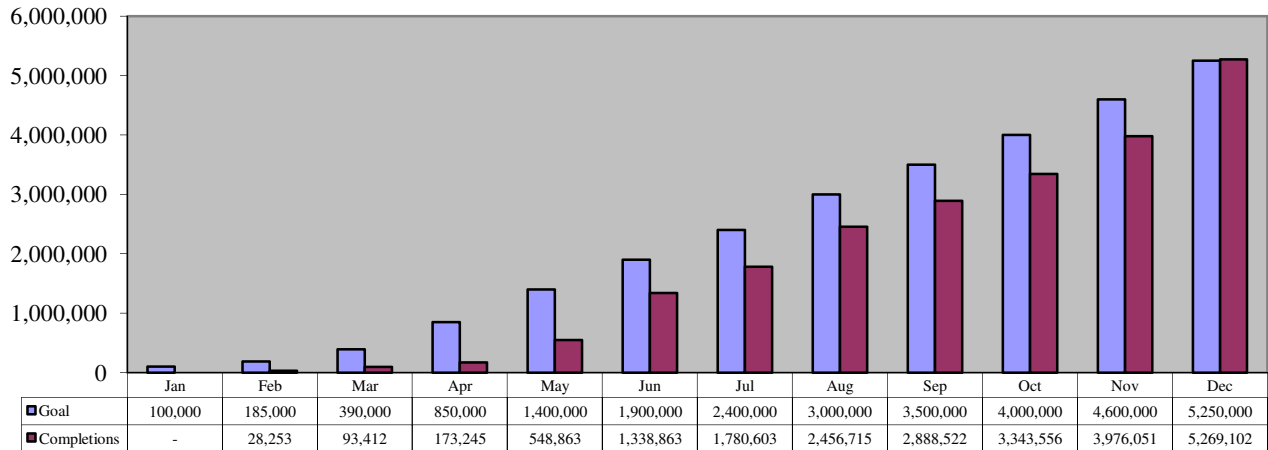


**Energy Efficient Products, Large Appliance Recycling: Statewide Results
Appliances Recycled YTD**

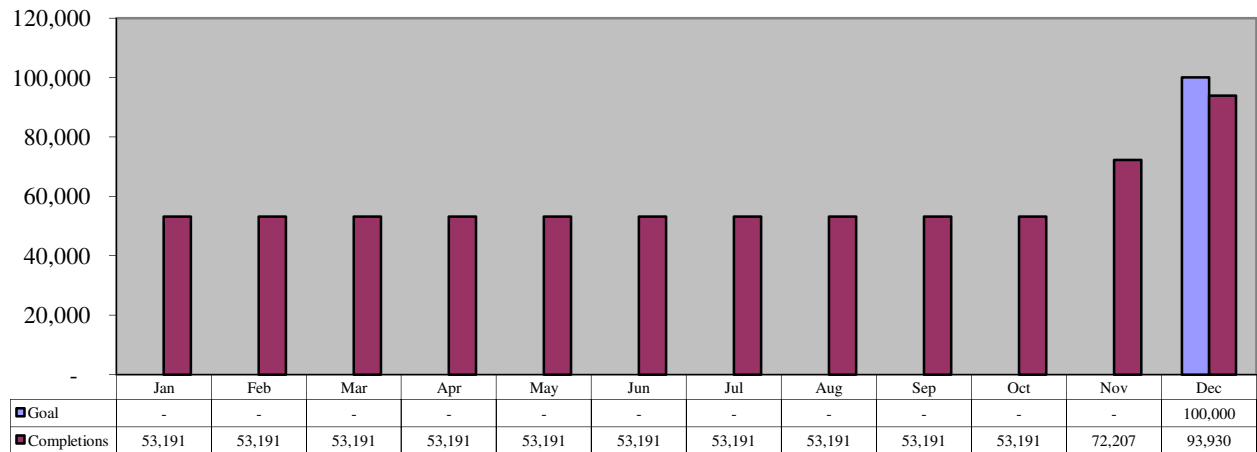


Energy Efficient Products

**Energy Efficient Products, CFL's: Statewide Results
CFL's Distributed YTD**



**Energy Efficient Products, Consumer Electronics: Statewide Results
Consumer Electronics Rebated YTD**



Energy Efficient Products

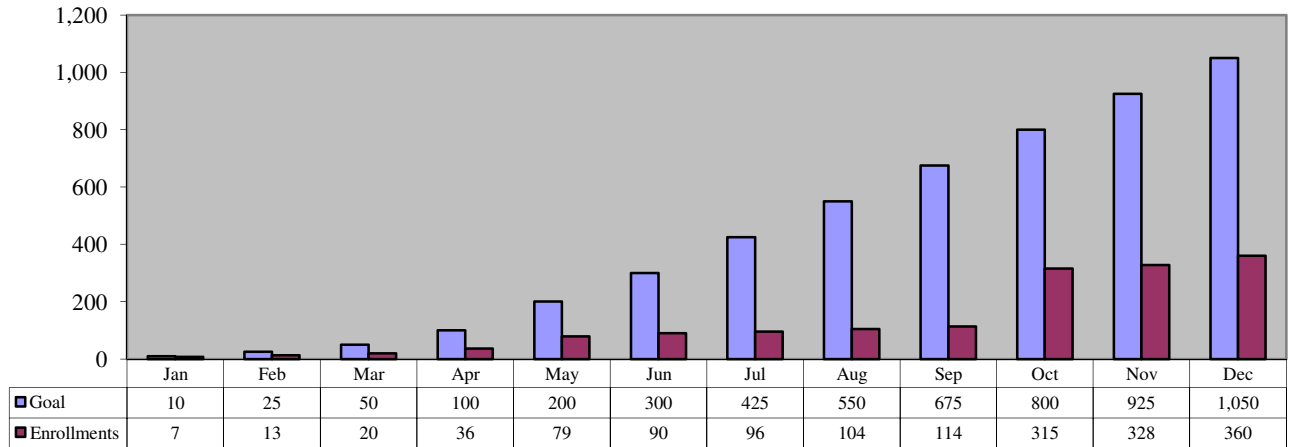
Green New Jersey Resource Team Progress Report			
Partner	Distribution Target	Amount Distributed	Progress
Project Porchlight	246,000	246,000	100%
TechniArt	171,454	171,454	100%

The numbers above represent GNJRT activity through December 31, 2011.

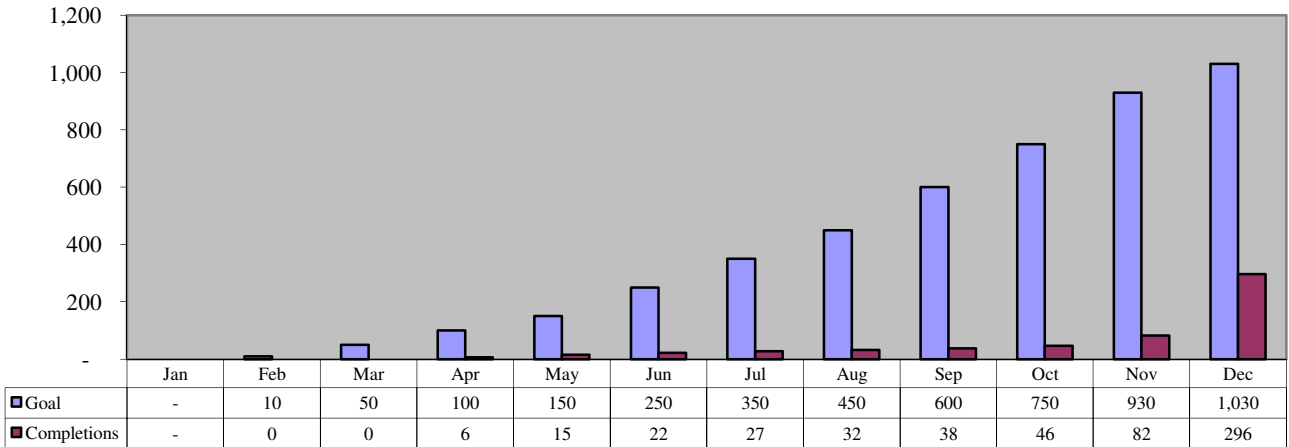
Home Performance with ENERGY STAR

Annual Budget	Expenditures YTD	Outstanding Commitments	Expenditures as % of Annual Budget	Expenditures and Committed as % of Annual Budget
\$29,760,156	\$15,266,819	\$5,512,456	51.30%	69.82%

**Home Performance with Energy Star: Statewide Results
Tier 2 Enrollments YTD**

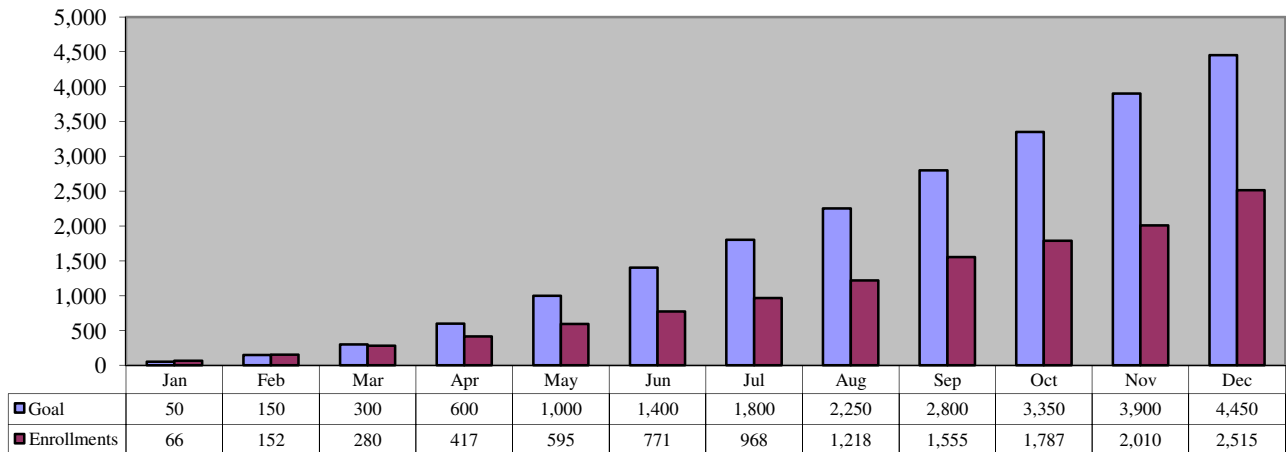


**Home Performance with Energy Star: Statewide Results
Tier 2 Completions YTD**

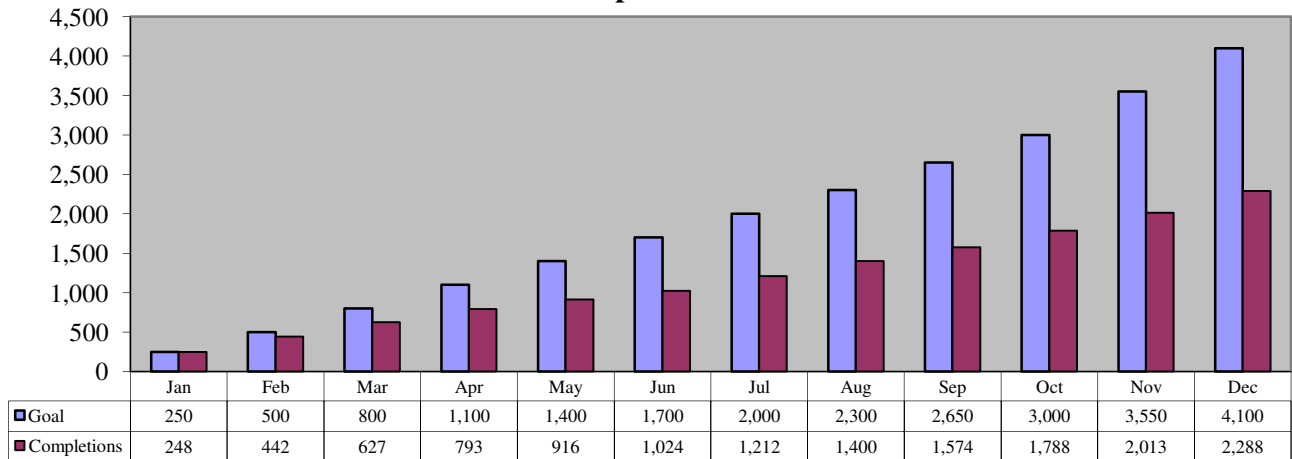


Home Performance with ENERGY STAR

**Home Performance with Energy Star: Statewide Results
Tier 3 Enrollments YTD**



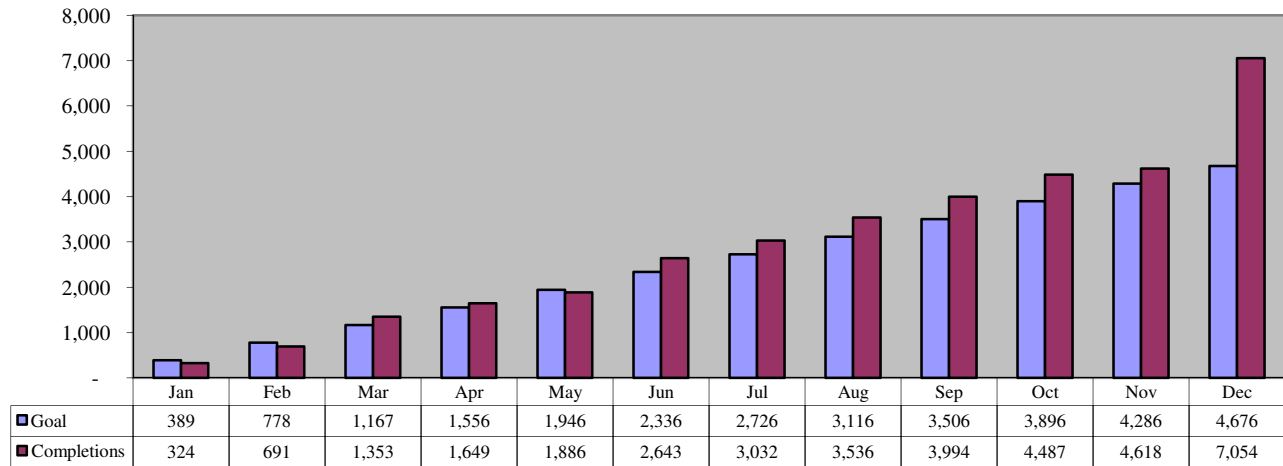
**Home Performance with Energy Star: Statewide Results
Tier 3 Completions YTD**



Comfort Partners

Annual Budget	Expenditures YTD	Expenditures as % of Annual Budget
\$30,829,308	\$28,405,762	92.14%

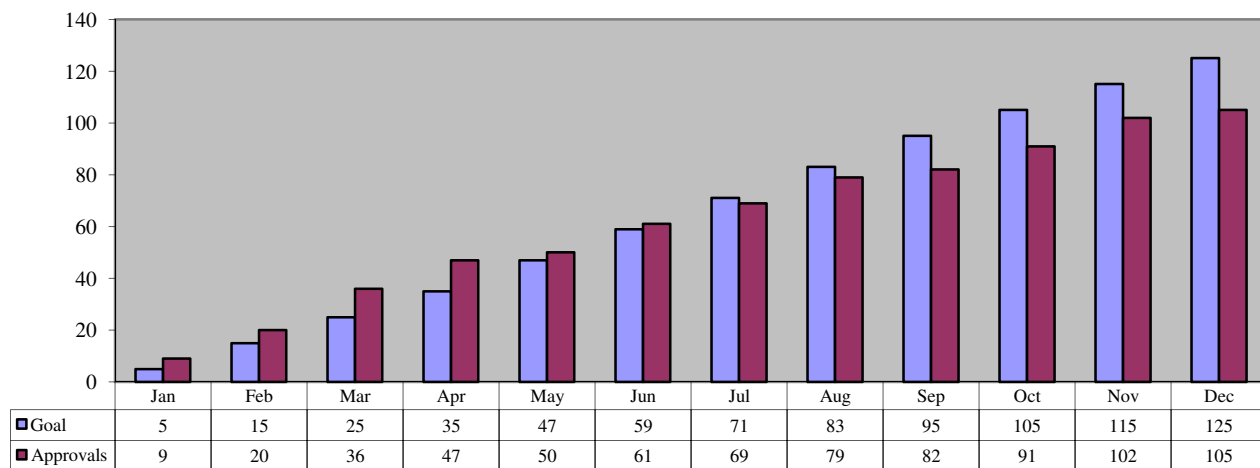
Comfort Partners: Statewide Results Completed Jobs YTD



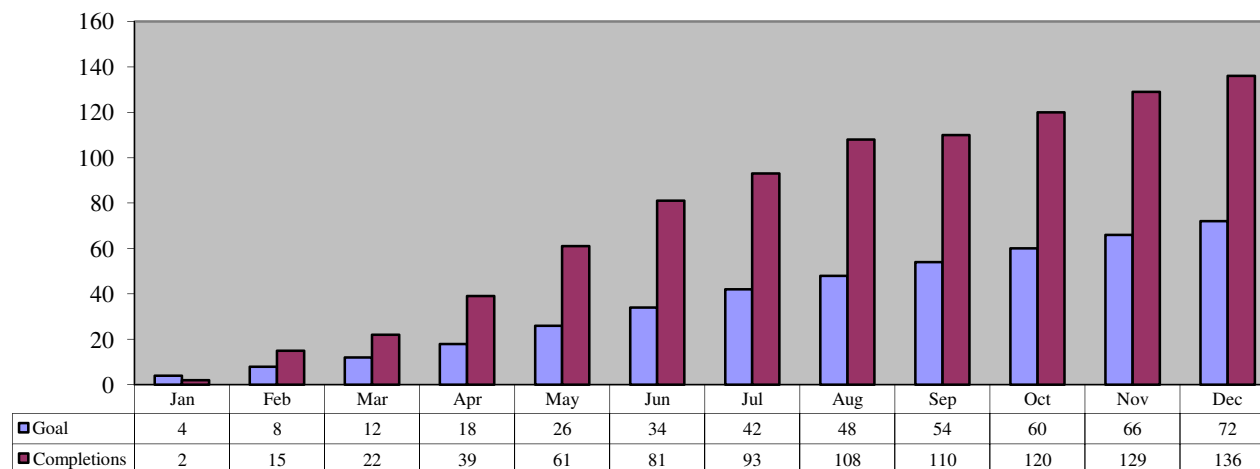
C & I New Construction

Annual Budget	Expenditures YTD	Outstanding Commitments	Expenditures as % of Annual Budget	Expenditures and Committed as % of Annual Budget
\$6,867,143	\$2,387,637	\$2,430,340	34.77%	70.16%

C&I New Construction : Statewide Results Approved Applications YTD



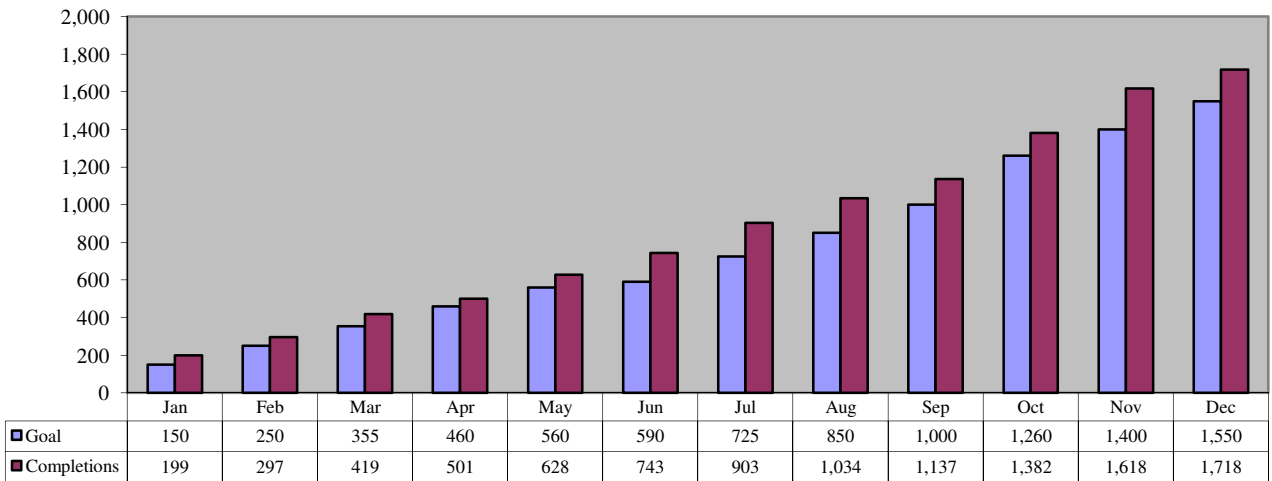
New Construction: Statewide Results Completed Jobs YTD



C & I Retrofit

Annual Budget	Expenditures YTD	Outstanding Commitments	Expenditures as % of Annual Budget	Expenditures and Committed as % of Annual Budget
\$45,899,451	\$15,697,502	\$21,743,160	34.20%	81.57%

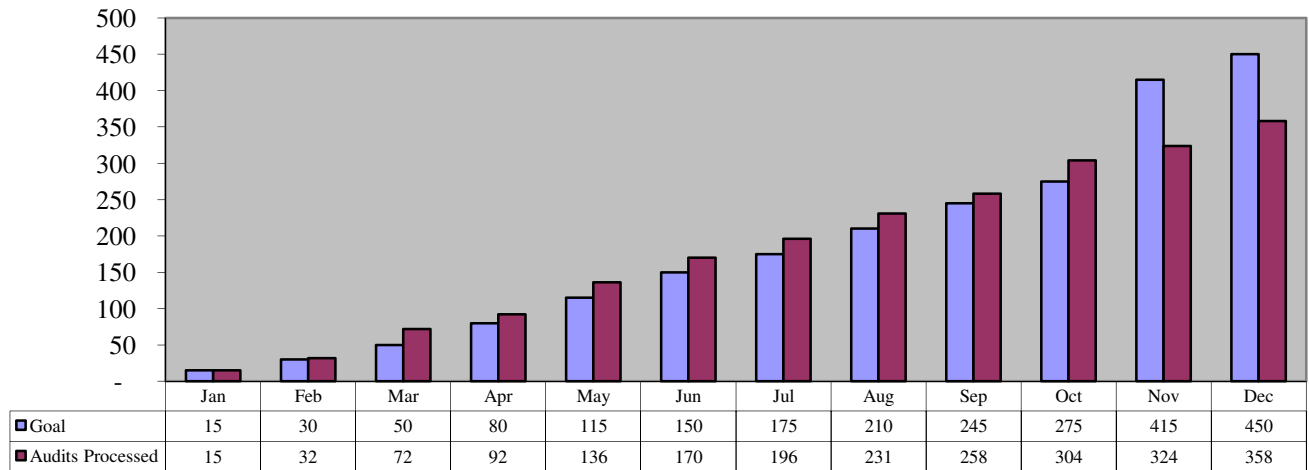
**C&I Retrofit: Statewide Results
Completed Jobs YTD**



Local Government Energy Audit

Annual Budget	Expenditures YTD	Outstanding Commitments	Expenditures as % of Annual Budget	Expenditures and Committed as % of Annual Budget
\$9,115,171	\$3,493,179	\$2,404,280	38.32%	64.70%

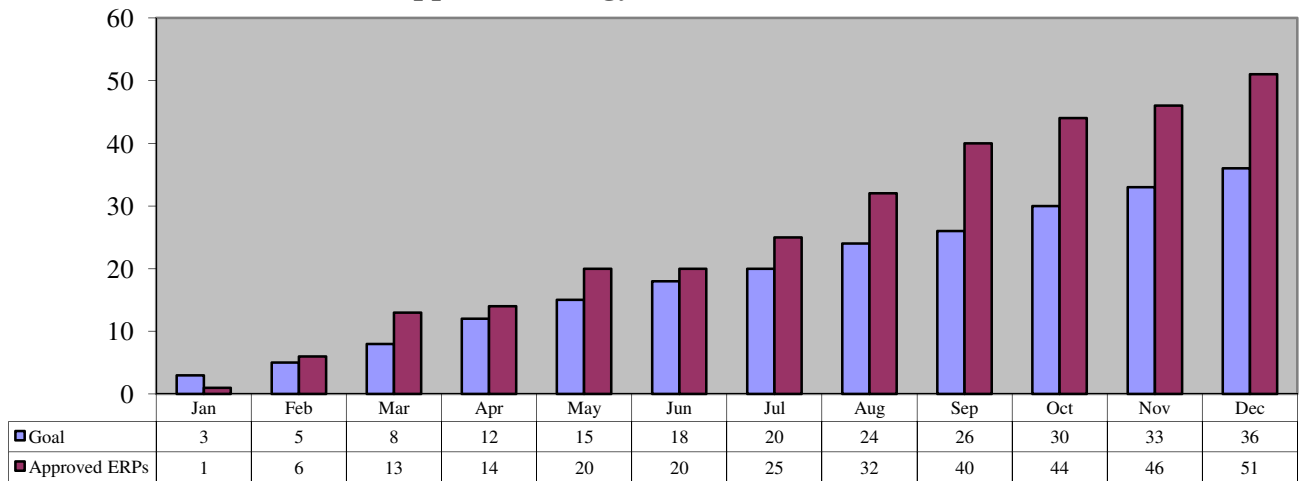
Local Government Energy Audit: Statewide Results Audits Reviewed and Processed YTD



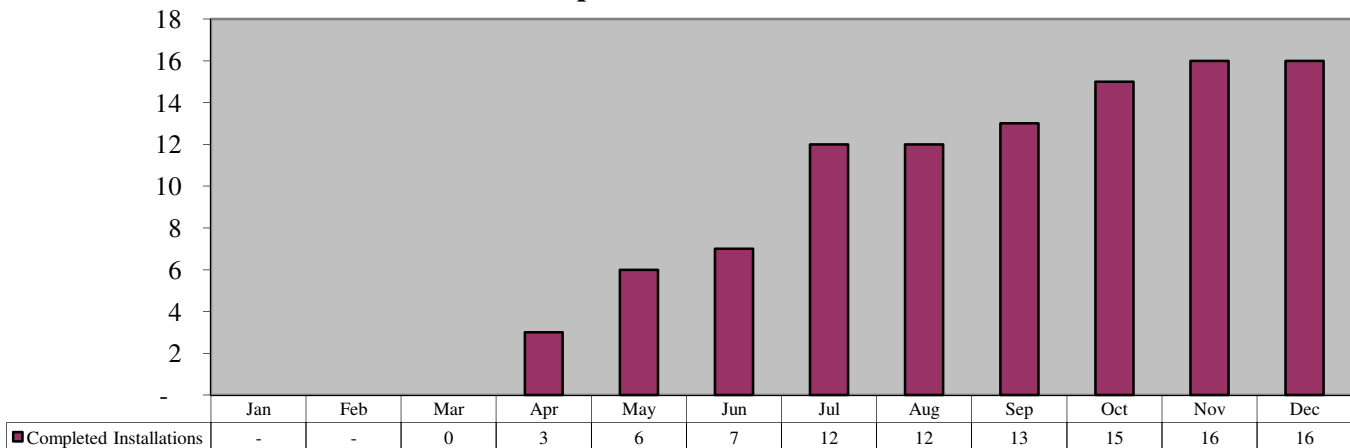
Pay-for-Performance

Annual Budget	Expenditures YTD	Outstanding Commitments	Expenditures as % of Annual Budget	Expenditures and Committed as % of Annual Budget
\$43,355,702	\$5,023,091	\$26,724,700	11.59%	73.23%

**Pay for Performance: Statewide Results
Approved Energy Reduction Plans YTD**



**Pay for Performance: Statewide Results
Completed Installations YTD**

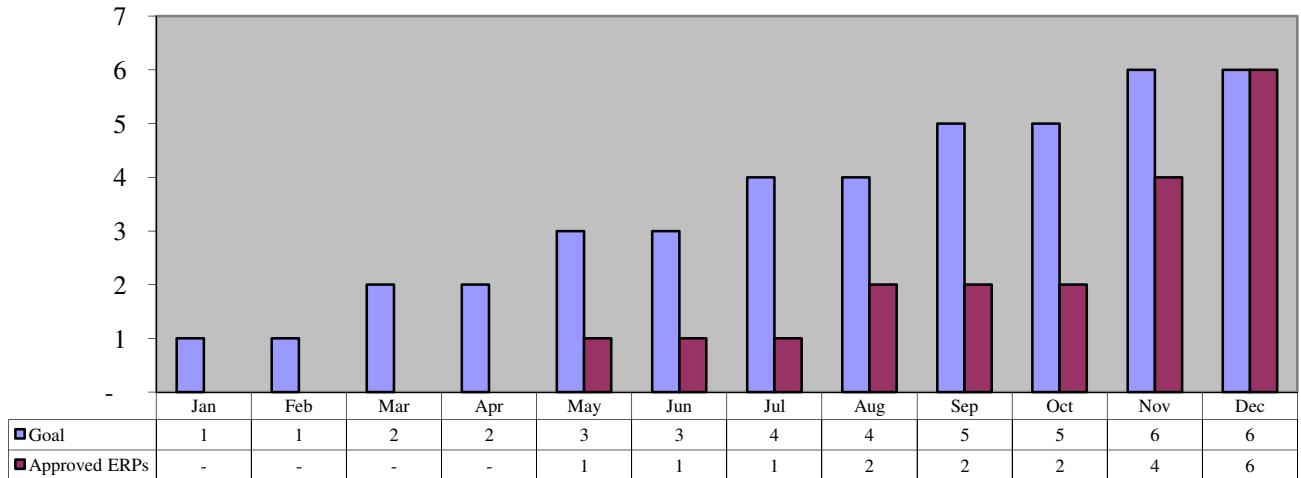


There was no goal established in 2011 for the number of completed installations for the Pay for Performance program. The graph above is for informational purposes only.

Pay-for-Performance New Construction

Annual Budget	Expenditures YTD	Outstanding Commitments	Expenditures as % of Annual Budget	Expenditures and Committed as % of Annual Budget
\$7,471,646	\$478,711	\$1,083,760	6.41%	20.91%

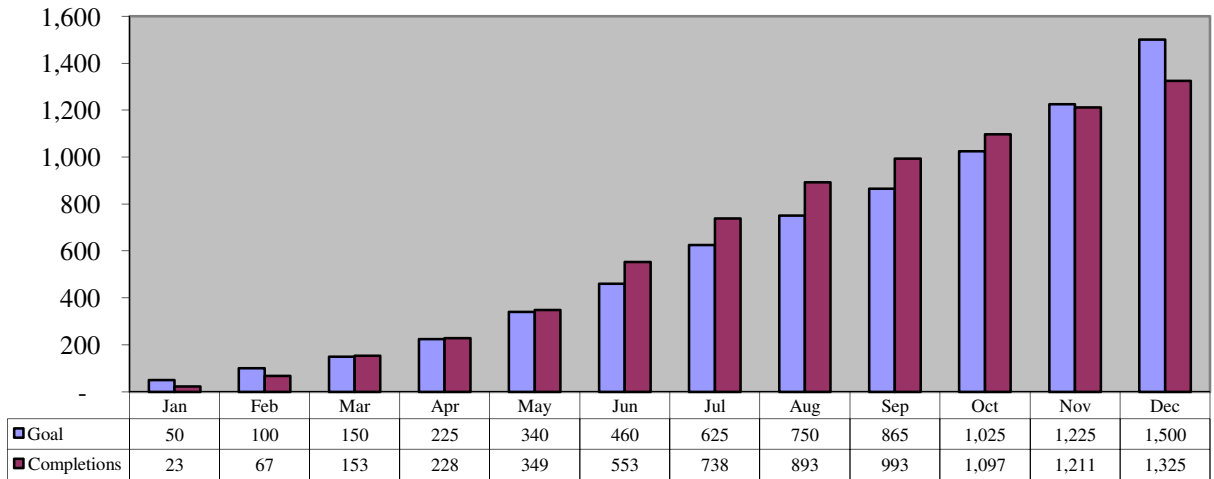
**Pay for Performance New Construction : Statewide Results
Approved Energy Reduction Plans YTD**



Direct Install

Annual Budget	Expenditures YTD	Outstanding Commitments	Expenditures as % of Annual Budget	Expenditures and Committed as % of Annual Budget
\$35,896,151	\$21,733,219	\$1,086,568	60.54%	63.57%

**Direct Install Program: Statewide Results
Completed Jobs YTD**



Large Energy Users Pilot

Annual Budget	Expenditures YTD	Outstanding Commitments	Expenditures as % of Annual Budget	Expenditures and Committed as % of Annual Budget
\$20,000,000	\$71,596	\$0	0.36%	0.36%

LEUP Program Update

MILESTONE	QTY
Entity submits initial application to TRC ⁽¹⁾	22
TRC sends prequalification letter notifying entity to submit their Draft Energy Efficiency Plan ⁽²⁾	20
Entity returns signed prequalification letter to TRC	12
Entity submits Draft Energy Efficiency Plan to TRC for review ⁽³⁾	4

(1) Two of the entities listed above have been found by TRC to be ineligible for the LEUP Program.

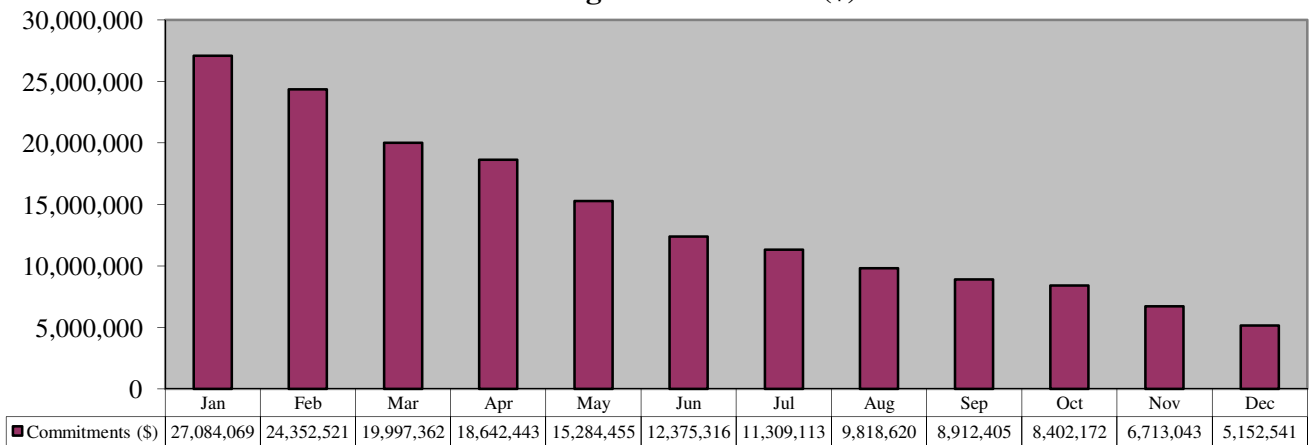
(2) Although no funding has been committed, the 20 eligible projects above represent \$11.8 million of potential incentives.

(3) After TRC's DEEP review they will submit an approval or rejection recommendation to AEG.

Renewable Energy Incentive Program

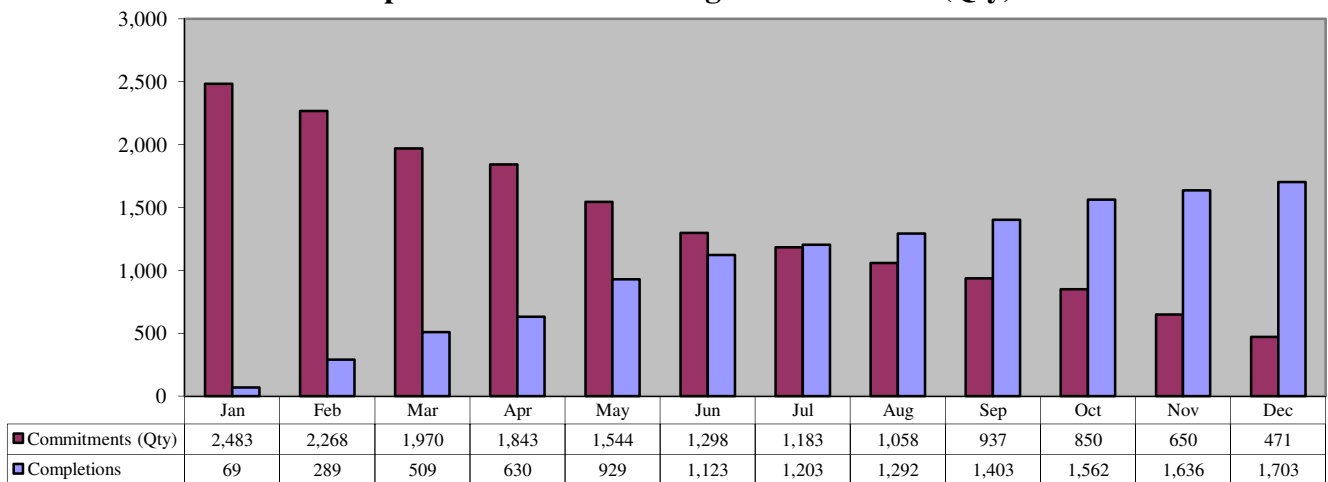
Annual Budget	Expenditures YTD	Outstanding Commitments	Expenditures as % of Annual Budget	Expenditures and Committed as % of Annual Budget
\$41,612,455	\$21,336,854	\$5,152,541	51.28%	63.66%

**Renewable Energy Incentive Program (2010 Program): Statewide Results
Outstanding Commitments (\$) YTD**



The committed dollars listed above represent REIP projects which adhere to the 2010 program guidelines. These commitments should gradually reduce over time.

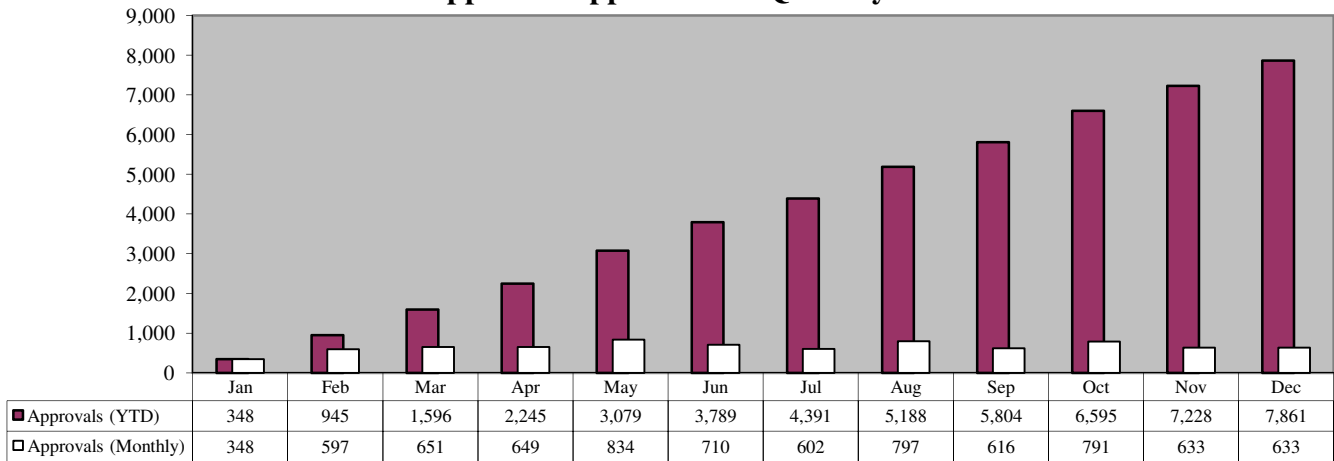
**Renewable Energy Incentive Program (2010 Program): Statewide Results
Completions Vs. Outstanding Commitments (Qty) YTD**



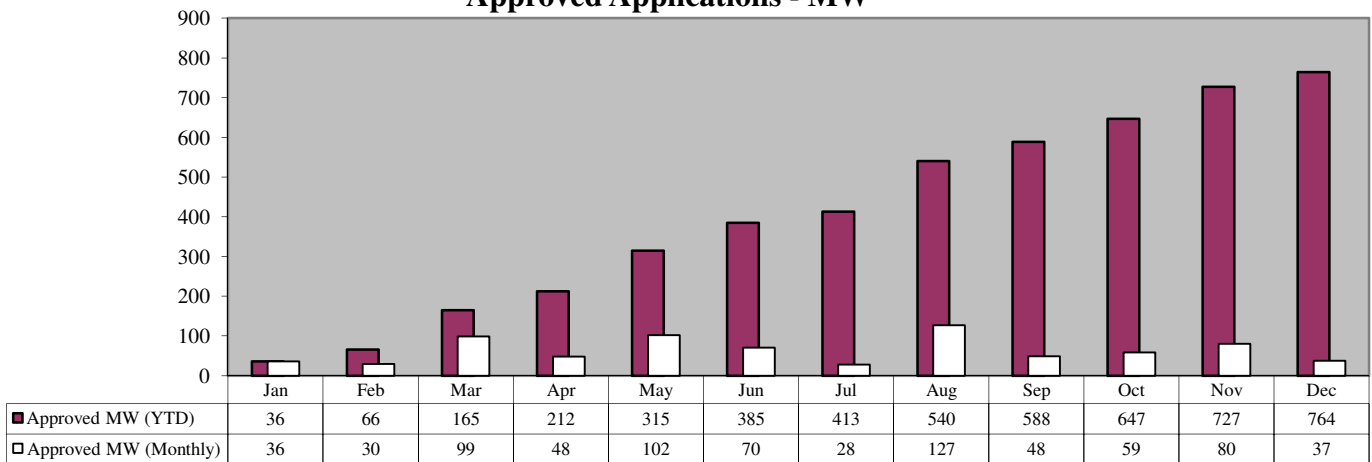
The commitments and completions listed above represent REIP projects which adhere to the 2010 program guidelines. The commitments should gradually reduce over time as projects are completed. It is not necessarily true that the commitments should reduce by exactly the number of completions due to scrubbed projects and project re-activations.

SREC Registration

**SREC Registration: Statewide Results
Approved Applications - Quantity**

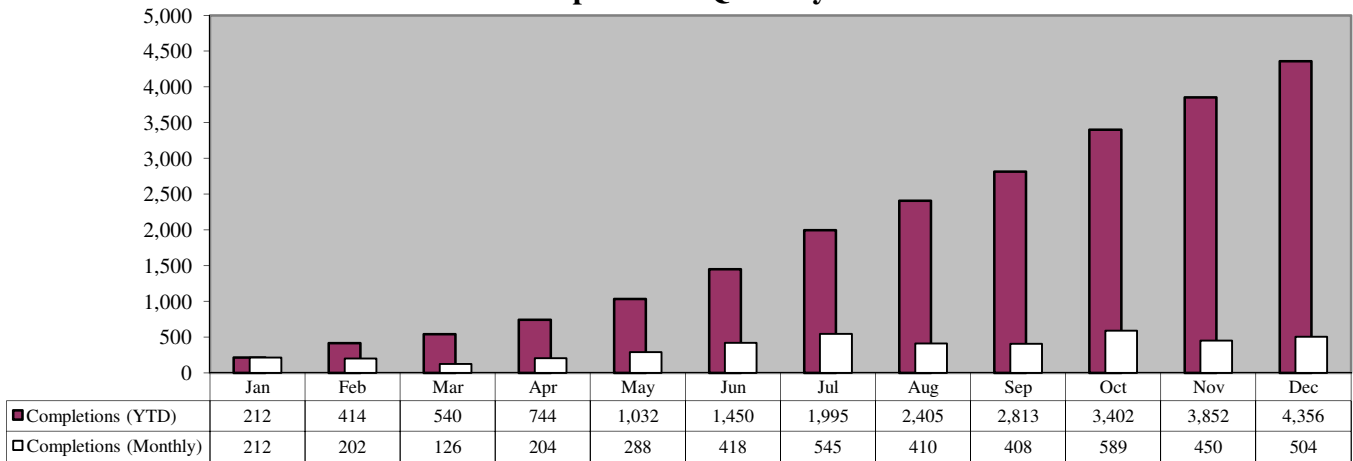


**SREC Registration: Statewide Results
Approved Applications - MW**

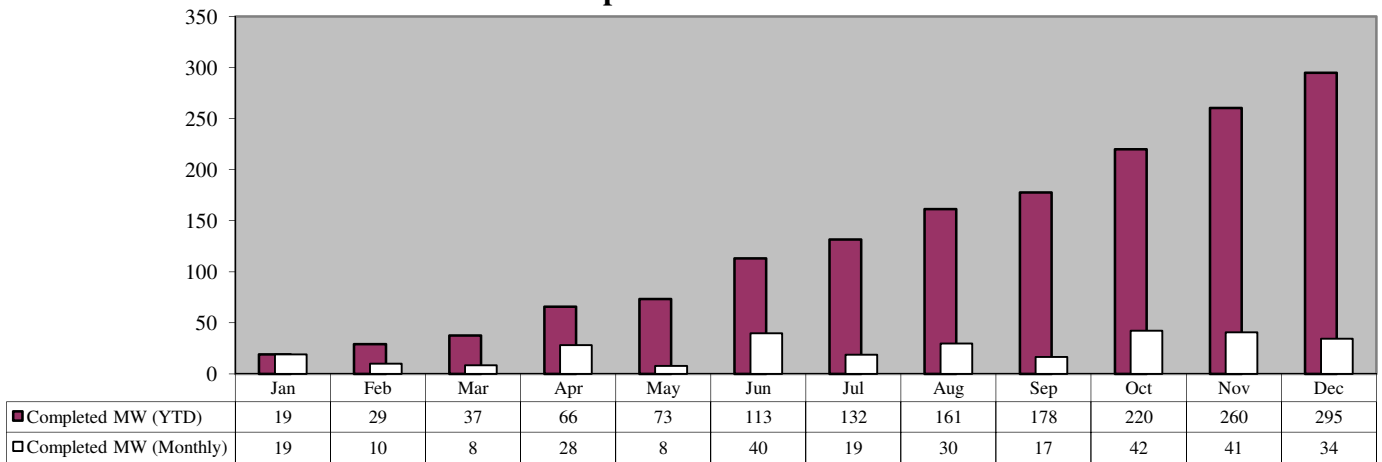


SREC Registration

**SREC Registration: Statewide Results
Completions - Quantity**



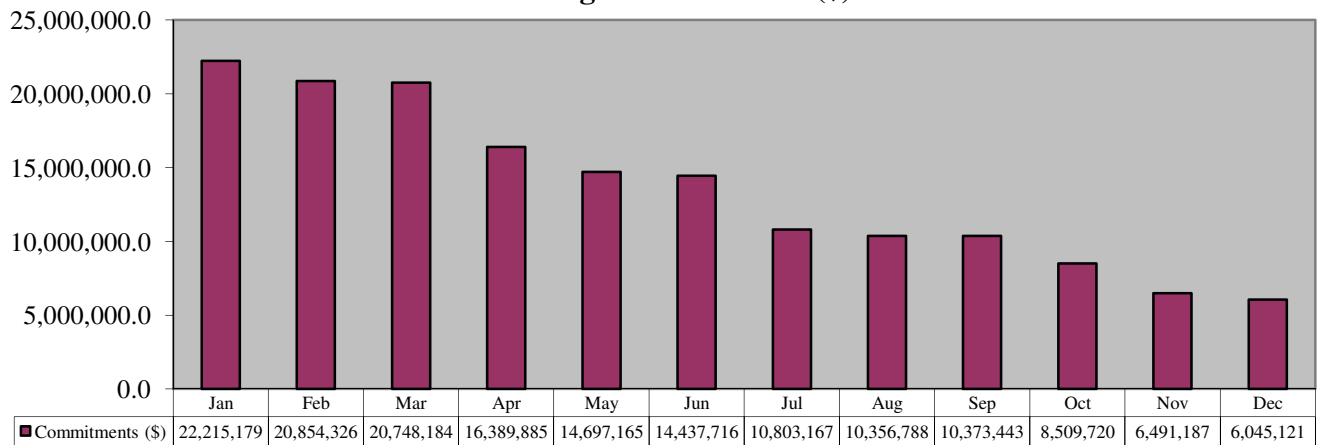
**SREC Registration: Statewide Results
Completions - MW**



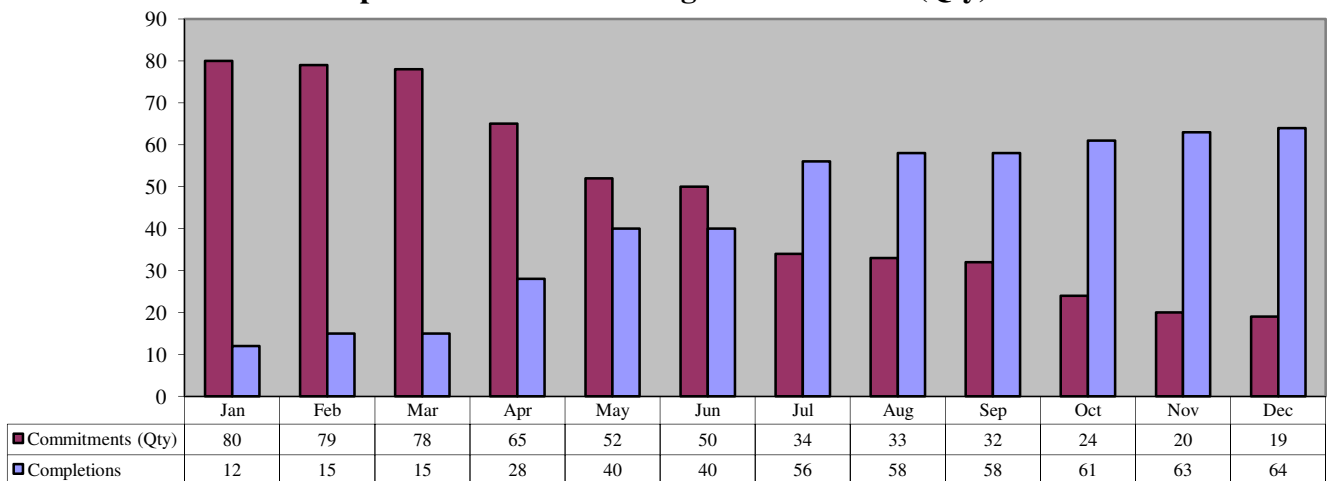
Customer On-Site Renewable Energy (CORE)

Annual Budget	Expenditures YTD	Outstanding Commitments	Expenditures as % of Annual Budget	Expenditures and Committed as % of Annual Budget
\$22,623,674	\$13,139,812	\$6,045,121	58.08%	84.80%

**CORE Program: Statewide Results
Outstanding Commitments (\$) YTD**



**CORE Program: Statewide Results
Completions Vs. Outstanding Commitments (Qty) YTD**



The CORE commitments listed above should gradually reduce over time as projects are completed. It is not necessarily true that the commitments should reduce by exactly the number of completions due to scrubbed projects and project re-activations.

Section IV

Reporting Data Worksheets

New Jersey's Clean Energy Program
Actual and Committed Expenses for Reporting Year 2011

Statewide Summary: New Jersey's Clean Energy Program
 Reporting Period: YTD thru 4th Quarter 2011

Program	Approved Budget	Actual Expenditures	Committed Expenditures	Actual and Committed Expenditures	Actual Expenditures as % of Authorized	Actual and Committed Expenditures as % of Authorized
Energy Efficiency Programs	\$325,875,452.17	\$139,035,801.19	\$71,002,166.00	\$210,037,967.19	42.67%	64.45%
Renewable Energy Programs	\$90,312,891.01	\$38,963,321.60	\$25,322,065.30	\$64,285,386.90	43.14%	71.18%
EDA Programs	\$57,634,153.38	\$6,335,017.00	\$6,475,983.00	\$12,811,000.00	10.99%	22.23%
Office of Clean Energy	\$7,501,050.81	\$4,331,674.86		\$4,331,674.86	57.75%	57.75%
TRUE Grant	\$25,000,000.00	\$3,210,125.71	\$21,789,874.29	\$25,000,000.00	12.84%	100.00%
TOTAL	\$506,323,547.37	\$191,875,940.36	\$124,590,088.59	\$316,466,028.95	37.90%	62.50%

While the percentages shown in Column (f) are derived by comparing the sum of the actual and committed expenditures reported in Columns (b) and (c), respectively, with the NJBPU budget approved for 2009 and shown in Column (a), it is expected that some of those committed expenses ultimately will be paid from future program budgets.

New Jersey's Clean Energy Program
Actual and Committed Expenses for Reporting Year 2011

Statewide Summary: Energy Efficiency Programs
Reporting Period: YTD thru 4th Quarter 2011

Program	Approved Budget	Actual Expenditures	Committed Expenditures	Actual and Committed Expenditures	Actual Expenditures as % of Authorized	Actual and Committed Expenditures as % of Authorized
RESIDENTIAL ENERGY EFFICIENCY PROGRAMS						
Residential HVAC - Electric & Gas	\$22,724,583.98	\$19,923,078.40		\$19,923,078.40	87.67%	87.67%
Residential New Construction	\$19,943,969.50	\$7,039,315.47	\$8,455,672.00	\$15,494,987.47	35.30%	77.69%
Energy Efficient Products	\$18,193,381.04	\$16,643,930.61		\$16,643,930.61	91.48%	91.48%
Home Performance with Energy Star	\$29,760,156.05	\$15,266,819.30	\$5,512,456.00	\$20,779,275.30	51.30%	69.82%
Marketing - Residential EE	\$1,309,984.00	\$1,111,985.10		\$1,111,985.10	84.89%	84.89%
Sub-Total: Residential Energy Efficiency Programs	\$91,932,074.57	\$59,985,128.88	\$13,968,128.00	\$73,953,256.88	65.25%	80.44%
RESIDENTIAL LOW INCOME						
Comfort Partners	\$30,829,308.11	\$28,405,761.97		\$28,405,761.97	92.14%	92.14%
Sub-Total: Residential Low Income	\$30,829,308.11	\$28,405,761.97	\$0.00	\$28,405,761.97	92.14%	92.14%
C & I ENERGY EFFICIENCY PROGRAMS						
C&I New Construction	\$6,867,143.41	\$2,387,636.95	\$2,430,340.00	\$4,817,976.95	34.77%	70.16%
C&I Retrofit	\$45,899,451.30	\$15,697,501.92	\$21,743,160.00	\$37,440,661.92	34.20%	81.57%
Pay-for-Performance New Construction	\$7,471,645.96	\$478,711.08	\$1,083,760.00	\$1,562,471.08	6.41%	20.91%
Pay-for-Performance	\$43,355,701.50	\$5,023,091.48	\$26,724,700.00	\$31,747,791.48	11.59%	73.23%
Combined Heat & Power (CHP)	\$1,002,122.83	\$0.00	\$1,000,000.00	\$1,000,000.00	0.00%	99.79%
Local Government Energy Audit	\$9,115,170.97	\$3,493,179.00	\$2,404,280.00	\$5,897,459.00	38.32%	64.70%
Direct Install	\$35,896,150.92	\$21,733,218.78	\$1,086,568.00	\$22,819,786.78	60.54%	63.57%
Teaching Energy Awareness with Children's Help (TEACH)	\$682,829.50	\$121,599.50	\$561,230.00	\$682,829.50	17.81%	100.00%
Marketing - Commercial & Industrial EE	\$1,075,000.00	\$1,062,330.79		\$1,062,330.79	98.82%	98.82%
Large Energy Users Pilot	\$20,000,000.00	\$71,596.10	\$0.00	\$71,596.10	0.36%	0.36%
Multi-Family Financing Pilot	\$10,000,000.00	\$0.00	\$0.00	\$0.00	0.00%	0.00%
Sub-Total: C & I Energy Efficiency Programs	\$181,365,216.39	\$50,068,865.60	\$57,034,038.00	\$107,102,903.60	27.61%	59.05%
OTHER ENERGY EFFICIENCY PROGRAMS						
Green Jobs and Building Code Training	\$678,853.10	\$195,895.63		\$195,895.63	28.86%	28.86%
Competitive Grant/Loan Solicitation	\$20,000,000.00	\$0.00		\$0.00	0.00%	0.00%
Sustainable Jersey	\$1,070,000.00	\$380,149.11		\$380,149.11	35.53%	35.53%
Sub-Total: Other Energy Efficiency Programs	\$21,748,853.10	\$576,044.74	\$0.00	\$576,044.74	2.65%	2.65%
TOTAL	\$325,875,452.17	\$139,035,801.19	\$71,002,166.00	\$210,037,967.19	42.67%	64.45%

While the percentages shown in Column (f) are derived by comparing the sum of the actual and committed expenditures reported in Columns (b) and (c), respectively, with the NJBPU budget approved for 2009 and shown in Column (a), it is expected that some of those committed expenses ultimately will be paid from future program budgets.

New Jersey's Clean Energy Program
Actual and Committed Expenses for Reporting Year 2011

Statewide Summary: Renewable Energy Programs
Reporting Period: YTD thru 4th Quarter 2011

Program	Approved Budget	Actual Expenditures	Committed Expenditures	Actual and Committed Expenditures	Actual Expenditures as % of Authorized	Actual and Committed Expenditures as % of Authorized
Customer On-Site Renewable Energy (CORE)	\$22,623,674.18	\$13,139,812.21	\$6,045,121.40	\$19,184,933.61	58.08%	84.80%
Clean Power Choice	\$68,400.00	\$29,209.40		\$29,209.40	42.70%	42.70%
Offshore Wind	\$11,070,253.00	\$2,633,211.00	\$8,437,042.00	\$11,070,253.00	23.79%	100.00%
Renewable Energy Program: Grid Connected (REDI)	\$11,282,831.73	\$0.00	\$3,856,320.00	\$3,856,320.00	0.00%	34.18%
Renewable Energy Incentive Program	\$41,612,455.10	\$21,336,854.39	\$5,152,540.50	\$26,489,394.89	51.28%	63.66%
Edison Innovation Clean Energy Fund (CST)	\$3,655,277.00	\$1,824,234.60	\$1,831,041.40	\$3,655,276.00	49.91%	100.00%
TOTAL	\$90,312,891.01	\$38,963,321.60	\$25,322,065.30	\$64,285,386.90	43.14%	71.18%

While the percentages shown in Column (f) are derived by comparing the sum of the actual and committed expenditures reported in Columns (b) and (c), respectively, with the NJBPU budget approved for 2009 and shown in Column (a), it is expected that some of those committed expenses ultimately will be paid from future program budgets.

New Jersey's Clean Energy Program
Actual and Committed Expenses for Reporting Year 2011

Statewide Summary: EDA Programs
 Reporting Period: YTD thru 4th Quarter 2011

Program	Approved Budget	Actual Expenditures	Committed Expenditures	Actual and Committed Expenditures	Actual Expenditures as % of Authorized	Actual and Committed Expenditures as % of Authorized
Edison Innovation Clean Energy Manufacturing Fund (CEMF)	\$35,634,153.38	\$5,915,017.00	\$6,475,983.00	\$12,391,000.00	16.60%	34.77%
Edison Innovation Green Growth Fund (EIGGF)	\$4,000,000.00	\$60,000.00	\$0.00	\$60,000.00	1.50%	1.50%
EE Revolving Loan Fund (EERLF)	\$18,000,000.00	\$360,000.00	\$0.00	\$360,000.00	2.00%	2.00%
TOTAL	\$57,634,153.38	\$6,335,017.00	\$6,475,983.00	\$12,811,000.00	10.99%	22.23%

While the percentages shown in Column (f) are derived by comparing the sum of the actual and committed expenditures reported in Columns (b) and (c), respectively, with the NJBPU budget approved for 2009 and shown in Column (a), it is expected that some of those committed expenses ultimately will be paid from future program budgets.

New Jersey's Clean Energy Program
Actual and Committed Expenses for Reporting Year 2011

Statewide Summary: Office of Clean Energy Reporting Period: YTD thru 4th Quarter 2011	Approved Budget	Actual Expenditures	Actual Expenditures as % of Authorized
Program			
OCE ADMINISTRATION AND OVERHEAD			
OCE Staff and Overhead	\$1,477,499.04	\$1,393,247.55	94.30%
Program Coordinator	\$2,067,983.00	\$1,872,038.25	90.52%
<i>Sub-Total: Oce Administration And Overhead</i>	<i>\$3,545,482.04</i>	<i>\$3,265,285.80</i>	<i>92.10%</i>
MEMBERSHIPS-DUES			
Clean Energy States Alliance	\$25,000.00	\$0.00	0.00%
Consortium for Energy Efficiency	\$133,817.00	\$131,196.00	98.04%
<i>Sub-Total: Memberships-Dues</i>	<i>\$158,817.00</i>	<i>\$131,196.00</i>	<i>82.61%</i>
OCE EVALUATION AND RELATED RESEARCH			
Rutgers-CEEEP	\$1,308,415.71	\$387,802.07	29.64%
Funding Reconciliation	\$21,055.00	\$0.00	0.00%
O&M Scoping Study/Online Academy	\$450,000.00	\$391,097.89	86.91%
Other Studies	\$44,566.75	\$0.00	0.00%
Program Evaluation	\$1,351,779.65	\$156,293.10	11.56%
Financial Audits	\$498,162.35	\$0.00	0.00%
<i>Sub-Total: Oce Evaluation And Related Research</i>	<i>\$3,673,979.46</i>	<i>\$935,193.06</i>	<i>25.45%</i>
OCE MARKET AND COMMUNICATIONS			
Outreach and Education/Community Partner Grants	\$122,772.31	\$0.00	0.00%
<i>Sub-Total: Oce Market And Communications</i>	<i>\$122,772.31</i>	<i>\$0.00</i>	<i>0.00%</i>
TOTAL	<i>\$7,501,050.81</i>	<i>\$4,331,674.86</i>	<i>57.75%</i>

New Jersey's Clean Energy Program
Actual and Committed Expenses for Reporting Year 2011

Statewide Summary: TRUE Grant
 Reporting Period: YTD thru 4th Quarter 2011

Program	Approved Budget	Actual Expenditures	Committed Expenditures	Actual and Committed Expenditures	Actual Expenditures as % of Authorized	Actual and Committed Expenditures as % of Authorized
TRUE Grant	\$25,000,000.00	\$3,210,125.71	\$21,789,874.29	\$25,000,000.00	12.84%	100.00%
TOTAL	\$25,000,000.00	\$3,210,125.71	\$21,789,874.29	\$25,000,000.00	12.84%	100.00%

While the percentages shown in Column (f) are derived by comparing the sum of the actual and committed expenditures reported in Columns (b) and (c), respectively, with the NJBPU budget approved for 2009 and shown in Column (a), it is expected that some of those committed expenses ultimately will be paid from future program budgets.

New Jersey's Clean Energy Program
Detailed Expenses Data for Reporting Year 2011

Statewide Summary: New Jersey's Clean Energy Program
 Reporting Period: YTD thru 4th Quarter 2011

Program	Total Actual NJCEP Expenditures	Administration & Program Development	Sales, Call Centers, Marketing and Website	Training	Rebates, Grants, and Other Direct Incentives	Rebate Processing, Inspections, and Other Quality Control	Evaluation and Related Research	Performance Incentives
Energy Efficiency Programs	\$139,035,801.19	\$8,588,099.75	\$2,585,603.84	\$1,649,450.39	\$115,175,122.81	\$10,808,309.16	\$229,215.24	\$0.00
Renewable Energy Programs	\$38,963,321.60	\$1,378,416.32	\$27,000.00	\$0.00	\$35,102,913.05	\$2,454,992.23	\$0.00	\$0.00
EDA Programs	\$6,335,017.00	\$660,000.00	\$0.00	\$0.00	\$5,675,017.00	\$0.00	\$0.00	\$0.00
Office of Clean Energy	\$4,331,674.86	\$2,082,530.80	\$534,936.00	\$0.00	\$0.00	\$765,240.00	\$948,968.06	\$0.00
TRUE Grant	\$3,210,125.71	\$627,339.94	\$1,044.42	\$0.00	\$2,531,931.35	\$49,810.00	\$0.00	\$0.00
TOTAL	\$191,875,940.36	\$13,336,386.81	\$3,148,584.26	\$1,649,450.39	\$158,484,984.21	\$14,078,351.39	\$1,178,183.30	\$0.00
Percent of Total	100.00%	6.95%	1.64%	0.86%	82.60%	7.34%	0.61%	0.00%

New Jersey's Clean Energy Program
Detailed Expenses Data for Reporting Year 2011

Statewide Summary: Energy Efficiency Programs
Reporting Period: YTD thru 4th Quarter 2011

Program	Total Actual NJCEP Expenditures	Administration & Program Development	Sales, Call Centers, Marketing and Website	Training	Rebates, Grants, and Other Direct Incentives	Rebate Processing, Inspections, and Other Quality Control	Evaluation and Related Research	Performance Incentives
RESIDENTIAL ENERGY EFFICIENCY PROGRAMS								
Residential HVAC - Electric & Gas	\$19,923,078.40	\$1,306,764.00	\$0.00	\$354,001.80	\$15,962,137.07	\$2,300,175.53	\$0.00	\$0.00
Residential New Construction	\$7,039,315.47	\$1,249,392.00	\$0.00	\$0.00	\$3,961,056.33	\$1,758,487.60	\$70,379.54	\$0.00
Energy Efficient Products	\$16,643,930.61	\$1,655,032.84	\$0.00	\$0.00	\$14,148,198.49	\$681,863.58	\$158,835.70	\$0.00
Home Performance with Energy Star	\$15,266,819.30	\$1,044,421.08	\$0.00	\$0.00	\$13,044,703.64	\$1,177,694.58	\$0.00	\$0.00
Marketing - Residential EE	\$1,111,985.10	\$0.00	\$1,111,985.10	\$0.00	\$0.00	\$0.00	\$0.00	\$0.00
Sub-Total: Residential Energy Efficiency Programs	\$59,985,128.88	\$5,255,609.92	\$1,111,985.10	\$354,001.80	\$47,116,095.53	\$5,918,221.29	\$229,215.24	\$0.00
RESIDENTIAL LOW INCOME								
Comfort Partners	\$28,405,761.97	\$1,310,075.23	\$408,406.68	\$203,850.09	\$24,855,447.47	\$1,627,982.50	\$0.00	\$0.00
Sub-Total: Residential Low Income	\$28,405,761.97	\$1,310,075.23	\$408,406.68	\$203,850.09	\$24,855,447.47	\$1,627,982.50	\$0.00	\$0.00
C & I ENERGY EFFICIENCY PROGRAMS								
C&I New Construction	\$2,387,636.95	\$197,454.00	\$0.00	\$243,591.00	\$1,769,814.08	\$176,777.87	\$0.00	\$0.00
C&I Retrofit	\$15,697,501.92	\$615,550.80	\$0.00	\$263,078.28	\$12,979,157.68	\$1,839,715.16	\$0.00	\$0.00
Pay-for-Performance New Construction	\$478,711.08	\$99,600.00	\$0.00	\$248,860.08	\$123,251.00	\$7,000.00	\$0.00	\$0.00
Pay-for-Performance	\$5,023,091.48	\$454,800.00	\$0.00	\$306,234.64	\$4,002,340.60	\$259,716.24	\$0.00	\$0.00
Combined Heat & Power (CHP)	\$0.00	\$0.00	\$0.00	\$0.00	\$0.00	\$0.00	\$0.00	\$0.00
Local Government Energy Audit	\$3,493,179.00	\$120,000.00	\$0.00	\$0.00	\$2,879,099.00	\$494,080.00	\$0.00	\$0.00
Direct Install	\$21,733,218.78	\$460,804.80	\$2,881.27	\$0.00	\$20,806,107.71	\$463,425.00	\$0.00	\$0.00
Teaching Energy Awareness with Children's Help (TEACH)	\$121,599.50	\$24,000.00	\$0.00	\$29,834.50	\$67,765.00	\$0.00	\$0.00	\$0.00
Marketing - Commercial & Industrial EE	\$1,062,330.79	\$0.00	\$1,062,330.79	\$0.00	\$0.00	\$0.00	\$0.00	\$0.00
Large Energy Users Pilot	\$71,596.10	\$50,205.00	\$0.00	\$0.00	\$0.00	\$21,391.10	\$0.00	\$0.00
Multi-Family Financing Pilot	\$0.00	\$0.00	\$0.00	\$0.00	\$0.00	\$0.00	\$0.00	\$0.00
Sub-Total: C & I Energy Efficiency Programs	\$50,068,865.60	\$2,022,414.60	\$1,065,212.06	\$1,091,598.50	\$42,627,535.07	\$3,262,105.37	\$0.00	\$0.00
OTHER ENERGY EFFICIENCY PROGRAMS								
Green Jobs and Building Code Training	\$195,895.63	\$0.00	\$0.00	\$0.00	\$195,895.63	\$0.00	\$0.00	\$0.00
Competitive Grant/Loan Solicitation	\$0.00	\$0.00	\$0.00	\$0.00	\$0.00	\$0.00	\$0.00	\$0.00
Sustainable Jersey	\$380,149.11	\$0.00	\$0.00	\$0.00	\$380,149.11	\$0.00	\$0.00	\$0.00
Sub-Total: Other Energy Efficiency Programs	\$576,044.74	\$0.00	\$0.00	\$0.00	\$576,044.74	\$0.00	\$0.00	\$0.00
TOTAL	\$139,035,801.19	\$8,588,099.75	\$2,585,603.84	\$1,649,450.39	\$115,175,122.81	\$10,808,309.16	\$229,215.24	\$0.00
Percent of Total	100.00%	6.18%	1.86%	1.19%	82.84%	7.77%	0.16%	0.00%

New Jersey's Clean Energy Program
Detailed Expenses Data for Reporting Year 2011

Statewide Summary: Renewable Energy Programs
 Reporting Period: YTD thru 4th Quarter 2011

Program	Total Actual NJCEP Expenditures	Administration & Program Development	Sales, Call Centers, Marketing and Website	Training	Rebates, Grants, and Other Direct Incentives	Rebate Processing, Inspections, and Other Quality Control	Evaluation and Related Research	Performance Incentives
Customer On-Site Renewable Energy (CORE)	\$13,139,812.21	\$0.00	\$0.00	\$0.00	\$13,139,812.21	\$0.00	\$0.00	\$0.00
Clean Power Choice	\$29,209.40	\$2,209.40	\$27,000.00	\$0.00	\$0.00	\$0.00	\$0.00	\$0.00
Offshore Wind	\$2,633,211.00	\$0.00	\$0.00	\$0.00	\$2,633,211.00	\$0.00	\$0.00	\$0.00
Renewable Energy Program: Grid Connected (REDI)	\$0.00	\$0.00	\$0.00	\$0.00	\$0.00	\$0.00	\$0.00	\$0.00
Renewable Energy Incentive Program	\$21,336,854.39	\$1,376,206.92	\$0.00	\$0.00	\$17,505,655.24	\$2,454,992.23	\$0.00	\$0.00
Edison Innovation Clean Energy Fund (CST)	\$1,824,234.60	\$0.00	\$0.00	\$0.00	\$1,824,234.60	\$0.00	\$0.00	\$0.00
TOTAL	\$38,963,321.60	\$1,378,416.32	\$27,000.00	\$0.00	\$35,102,913.05	\$2,454,992.23	\$0.00	\$0.00
Percent of Total	100.00%	3.54%	0.07%	0.00%	90.09%	6.30%	0.00%	0.00%

New Jersey's Clean Energy Program
Detailed Expenses Data for Reporting Year 2011

Statewide Summary: EDA Programs
 Reporting Period: YTD thru 4th Quarter 2011

Program	Total Actual NJCEP Expenditures	Administration & Program Development	Sales, Call Centers, Marketing and Website	Training	Rebates, Grants, and Other Direct Incentives	Rebate Processing, Inspections, and Other Quality Control	Evaluation and Related Research	Performance Incentives
Edison Innovation Clean Energy Manufacturing Fund (CEMF)	\$5,915,017.00	\$240,000.00	\$0.00	\$0.00	\$5,675,017.00	\$0.00	\$0.00	\$0.00
Edison Innovation Green Growth Fund (EIGGF)	\$60,000.00	\$60,000.00	\$0.00	\$0.00	\$0.00	\$0.00	\$0.00	\$0.00
EE Revolving Loan Fund (EERLF)	\$360,000.00	\$360,000.00	\$0.00	\$0.00	\$0.00	\$0.00	\$0.00	\$0.00
TOTAL	\$6,335,017.00	\$660,000.00	\$0.00	\$0.00	\$5,675,017.00	\$0.00	\$0.00	\$0.00
Percent of Total	100.00%	10.42%	0.00%	0.00%	89.58%	0.00%	0.00%	0.00%

New Jersey's Clean Energy Program
Detailed Expenses Data for Reporting Year 2011

Statewide Summary: Office of Clean Energy
Reporting Period: YTD thru 4th Quarter 2011

Program	Total Actual NJCEP Expenditures	Administration & Program Development	Sales, Call Centers, Marketing and Website	Training	Rebates, Grants, and Other Direct Incentives	Rebate Processing, Inspections, and Other Quality Control	Evaluation and Related Research	Performance Incentives
OCE ADMINISTRATION AND OVERHEAD								
OCE Staff and Overhead	\$1,393,247.55	\$1,393,247.55	\$0.00	\$0.00	\$0.00	\$0.00	\$0.00	\$0.00
Program Coordinator	\$1,872,038.25	\$558,087.25	\$534,936.00	\$0.00	\$0.00	\$765,240.00	\$13,775.00	\$0.00
Sub-Total: Oce Administration And Overhead	\$3,265,285.80	\$1,951,334.80	\$534,936.00	\$0.00	\$0.00	\$765,240.00	\$13,775.00	\$0.00
MEMBERSHIPS-DUES								
Clean Energy States Alliance	\$0.00	\$0.00	\$0.00	\$0.00	\$0.00	\$0.00	\$0.00	\$0.00
Consortium for Energy Efficiency	\$131,196.00	\$131,196.00	\$0.00	\$0.00	\$0.00	\$0.00	\$0.00	\$0.00
Sub-Total: Memberships-Dues	\$131,196.00	\$131,196.00	\$0.00	\$0.00	\$0.00	\$0.00	\$0.00	\$0.00
OCE EVALUATION AND RELATED RESEARCH								
Rutgers-CEEEP	\$387,802.07	\$0.00	\$0.00	\$0.00	\$0.00	\$0.00	\$387,802.07	\$0.00
Funding Reconciliation	\$0.00	\$0.00	\$0.00	\$0.00	\$0.00	\$0.00	\$0.00	\$0.00
O&M Scoping Study/Online Academy	\$391,097.89	\$0.00	\$0.00	\$0.00	\$0.00	\$0.00	\$391,097.89	\$0.00
Other Studies	\$0.00	\$0.00	\$0.00	\$0.00	\$0.00	\$0.00	\$0.00	\$0.00
Program Evaluation	\$156,293.10	\$0.00	\$0.00	\$0.00	\$0.00	\$0.00	\$156,293.10	\$0.00
Financial Audits	\$0.00	\$0.00	\$0.00	\$0.00	\$0.00	\$0.00	\$0.00	\$0.00
Sub-Total: Oce Evaluation And Related Research	\$935,193.06	\$0.00	\$0.00	\$0.00	\$0.00	\$0.00	\$935,193.06	\$0.00
OCE MARKET AND COMMUNICATIONS								
Outreach and Education/Community Partner Grants	\$0.00	\$0.00	\$0.00	\$0.00	\$0.00	\$0.00	\$0.00	\$0.00
Sub-Total: Oce Market And Communications	\$0.00	\$0.00	\$0.00	\$0.00	\$0.00	\$0.00	\$0.00	\$0.00
TOTAL	\$4,331,674.86	\$2,082,530.80	\$534,936.00	\$0.00	\$0.00	\$765,240.00	\$948,968.06	\$0.00
Percent of Total	100.00%	48.08%	12.35%	0.00%	0.00%	17.67%	21.91%	0.00%

New Jersey's Clean Energy Program
Detailed Expenses Data for Reporting Year 2011

Statewide Summary: TRUE Grant
 Reporting Period: YTD thru 4th Quarter 2011

Program	Total Actual NJCEP Expenditures	Administration & Program Development	Sales, Call Centers, Marketing and Website	Training	Rebates, Grants, and Other Direct Incentives	Rebate Processing, Inspections, and Other Quality Control	Evaluation and Related Research	Performance Incentives
TRUE Grant	\$3,210,125.71	\$627,339.94	\$1,044.42	\$0.00	\$2,531,931.35	\$49,810.00	\$0.00	\$0.00
TOTAL	\$3,210,125.71	\$627,339.94	\$1,044.42	\$0.00	\$2,531,931.35	\$49,810.00	\$0.00	\$0.00
Percent of Total	100.00%	19.54%	0.03%	0.00%	78.87%	1.55%	0.00%	0.00%

New Jersey's Clean Energy Program
Tracking Metrics for Reporting Year 2011

Statewide Summary: Energy Efficiency Programs Reporting Period: YTD thru 4th Quarter 2011	Actual YTD
Program - Tracking Metric	
RESIDENTIAL PROGRAMS	
Residential HVAC - <i>COOL Advantage Completed Applications</i>	15,461
Residential HVAC - <i>WARM Advantage Completed Applications</i>	24,499
Residential New Construction - <i>Enrollments</i>	1,893
Residential New Construction - <i>Completions</i>	3,905
Energy Efficient Products - <i>Change a Light - CFLs Distributed</i>	5,269,102
Energy Efficiency Products - <i>Clothes Washer Applications Completed</i>	32,202
Energy Efficiency Products - <i>Large Appliance Recycling Applications Completed</i>	15,769
Energy Efficiency Products - <i>Consumer Electronics Applications Completed</i>	93,930
Home Performance with ENERGY STAR - <i>Tier 2 Enrollments</i>	360
Home Performance with ENERGY STAR - <i>Tier 2 Completions</i>	296
Home Performance with ENERGY STAR - <i>Tier 3 Enrollments</i>	2,515
Home Performance with ENERGY STAR - <i>Tier 3 Completions</i>	2,288
RESIDENTIAL LOW INCOME PROGRAMS	
Comfort Partners - <i>Homes Completed</i>	7,054
COMMERCIAL & INDUSTRIAL PROGRAMS	
C&I New Construction - <i>Applications Approved</i>	105
C&I New Construction - <i>Applications Completed</i>	136
C&I Retrofit - <i>Applications Completed</i>	1,718
Pay-for Performance New Construction - <i>Approved Energy Reduction Plans</i>	6
Pay-for Performance New Construction - <i>Installations Completed</i>	0
Pay-for Performance New Construction - <i>M&V Reports Complete</i>	0
Pay-for Performance - <i>Approved Energy Reduction Plans</i>	51
Pay-for Performance - <i>Installations Completed</i>	16
Pay-for Performance - <i>M&V Reports Completed</i>	0
Combined Heat and Power (CHP) - <i>Applications Completed</i>	0
Local Government Energy Audit - <i>Audits Reviewed and Processed</i>	358
Local Government Energy Audit - <i>Audits Rebated</i>	501
Direct Install - <i>Applications Completed</i>	1,325
Teaching Energy Awareness with Children's Help (TEACH) - <i>Schools Benchmarked</i>	45
Large Energy Users Pilot - <i>Applications Approved</i>	0
Large Energy Users Pilot - <i>Applications Completed</i>	0

New Jersey's Clean Energy Program
Tracking Metrics for Reporting Year 2011

Statewide Summary: Renewable Energy Programs		Actual YTD
Reporting Period: YTD thru 4th Quarter 2011		
Program - Tracking Metric		
RENEWABLE PROGRAMS		
Customer On-Site Renewable Energy (CORE) - <i>Applications Completed</i>		64
Renewable Energy Incentive Program (REIP) - <i>Applications Completed</i>		1,703
SREC Registration - <i>Applications Approved</i>		7,861
SREC Registration - <i>Applications Completed</i>		4,356
Clean Power Choice - <i>Total Enrollments</i>		10,388
Renewable Energy Program: Grid Connected (REDI) - <i>Completed Grants</i>		0
Renewable Energy Program: Grid Connected (REDI) - <i>Number of Open Grants</i>		0
Edison Innovation Clean Energy Fund (CST) - <i>Completed Grants</i>		1
Edison Innovation Clean Energy Fund (CST) - <i>Number of Open Grants</i>		8
EDA/CST/HMFA PROGRAMS		
Edison Innovation Clean Energy Manufacturing Fund (CEMF) - <i>Completed Grants</i>		3
Edison Innovation Clean Energy Manufacturing Fund (CEMF) - <i>Number of Open Grants</i>		8
Edison Innovation Green Growth Fund (EIGGF) - <i>Completed Grants</i>		0
Edison Innovation Green Growth Fund (EIGGF) - <i>Number of Open Grants</i>		0
EE Revolving Loan Fund (EERLF) - <i>Number of Open Loans</i>		0

New Jersey's Clean Energy Program
Electric Energy Savings vs. Annual Goals for Reporting Year 2011

Statewide Summary: Energy Efficiency Programs Reporting Period: YTD thru 4th Quarter 2011 (Energy Savings)	Annual Savings			Lifetime Savings		
	Annual Goal	Actual YTD	Actual YTD as % of Goal	Annual Goal	Actual YTD	Actual YTD as % of Goal
	MWh	MWh	%	MWh	MWh	%
RESIDENTIAL PROGRAMS						
Residential HVAC - Electric & Gas	8,584	12,364	144%	303,174	210,355	69%
Residential New Construction	7,192	4,562	63%	100,039	91,240	91%
Energy Efficient Products	278,140	247,222	89%	1,792,796	1,706,777	95%
Home Performance with ENERGY STAR	2,307	2,131	92%	46,144	38,314	83%
Sub-Total: Residential EE Programs	296,223	266,279	90%	2,242,153	2,046,686	91%
COMMERCIAL & INDUSTRIAL PROGRAMS						
C&I New Construction	6,908	16,912	245%	103,627	264,120	255%
C&I Retrofit	80,438	103,360	128%	1,206,577	1,642,577	136%
Pay-for-Performance New Construction	450	0	0%	8,100	0	0%
Pay-for Performance	50,000	15,422	31%	900,000	216,562	24%
Direct Install	65,559	41,640	64%	983,379	621,575	63%
Large Energy Users Pilot	36,046	0	0%	540,696	0	0%
Sub-Total: C&I Programs	239,402	177,333	74%	3,742,379	2,744,834	73%
TOTAL Energy Efficiency Programs	535,625	443,612	83%	5,984,532	4,791,520	80%

New Jersey's Clean Energy Program
Gas Energy Savings vs. Annual Goals for Reporting Year 2011

Statewide Summary: Energy Efficiency Programs Reporting Period: YTD thru 4th Quarter 2011 (Energy Savings)	Annual Savings			Lifetime Savings		
	Annual Goal	Actual YTD	Actual YTD as % of Goal	Annual Goal	Actual YTD	Actual YTD as % of Goal
	DTh	DTh	%	DTh	DTh	%
RESIDENTIAL PROGRAMS						
Residential HVAC - Electric & Gas	294,603	343,759	117%	5,730,719	6,779,179	118%
Residential New Construction	267,602	60,733	23%	3,586,658	1,214,660	34%
Energy Efficient Products	3,024	27,056	895%	60,480	538,665	891%
Home Performance with ENERGY STAR	112,064	95,298	85%	2,241,280	2,058,387	92%
Sub-Total: Residential EE Programs	677,293	526,846	78%	11,619,137	10,590,890	91%
COMMERCIAL & INDUSTRIAL PROGRAMS						
C&I New Construction	119,494	4,361	4%	1,792,416	67,666	4%
C&I Retrofit	66,721	56,381	85%	1,000,817	1,026,019	103%
Pay-for-Performance New Construction	2,250	0	0%	40,500	0	0%
Pay-for Performance	175,000	45,344	26%	3,150,000	527,074	17%
Direct Install	57,177	61,347	107%	857,653	1,016,634	119%
Large Energy Users Pilot	172,538	0	0%	2,588,076	0	0%
Sub-Total: C&I Programs	593,181	167,433	28%	9,429,462	2,637,393	28%
TOTAL Energy Efficiency Programs	1,270,474	694,278	55%	21,048,599	13,228,284	63%

New Jersey's Clean Energy Program
Electric Savings for Reporting Year 2011

Statewide Summary: Energy Efficiency Programs
 Reporting Period: YTD thru 4th Quarter 2011
 (Energy Savings)

Program	Demand Savings			Annual Savings			Lifetime Savings		
	Installed	Committed	Installed and Committed	Installed	Committed	Installed and Committed	Installed	Committed	Installed and Committed
	kW	kW	kW	MWh	MWh	MWh	MWh	MWh	MWh
RESIDENTIAL PROGRAMS									
Residential HVAC - Electric & Gas	6,845		6,845	12,364		12,364	210,355		210,355
Residential New Construction	4,616	4,619	9,235	4,562	2,082	6,644	91,240	41,646	132,886
Energy Efficient Products	30,815		30,815	247,222		247,222	1,706,777		1,706,777
Home Performance with ENERGY STAR	894		894	2,131		2,131	38,314		38,314
Sub-Total: Residential EE Programs	43,170	4,619	47,789	266,279	2,082	268,361	2,046,686	41,646	2,088,332
RESIDENTIAL LOW INCOME PROGRAMS									
Comfort Partners	1,072		1,072	10,069		10,069	89,465		89,465
Sub-Total: Residential Low Income Programs	1,072		1,072	10,069		10,069	89,465		89,465
COMMERCIAL & INDUSTRIAL PROGRAMS									
C&I New Construction	4,650	19,234	23,884	16,912	19,178	36,090	264,120	288,849	552,969
C&I Retrofit	69,567	102,585	172,152	103,360	124,518	227,877	1,642,577	1,971,230	3,613,808
Pay-for-Performance New Construction	0	1,288	1,288	0	6,352	6,352	0	112,356	112,356
Pay-for Performance	2,514	10,469	12,983	15,422	50,830	66,252	216,562	847,665	1,064,227
Combined Heat and Power (CHP)	0	0	0	0	0	0	0	0	0
Direct Install	8,693	6,497	15,191	41,640	27,009	68,648	621,575	398,064	1,019,639
Large Energy Users Pilot	0	0	0	0	0	0	0	0	0
Sub-Total: C&I Programs	85,424	140,073	225,497	177,333	227,887	405,219	2,744,834	3,618,166	6,362,999
TOTAL Energy Efficiency Programs	129,666	144,692	274,358	453,681	229,969	683,650	4,880,985	3,659,812	8,540,797

New Jersey's Clean Energy Program
CHP Electric Generation for Reporting Year 2011

Statewide Summary: Combined Heat and Power
 Reporting Period: YTD thru 4th Quarter 2011
 (Electric Generation)

Program	Capacity			Annual Generation			Lifetime Generation		
	Installed	Committed	Installed and Committed	Installed	Committed	Installed and Committed	Installed	Committed	Installed and Committed
	kW	kW	kW	MWh	MWh	MWh	MWh	MWh	MWh
Combined Heat and Power	0	300	300	0	2,455	2,455	0	29,465	29,465
TOTAL CHP	0	300	300	0	2,455	2,455	0	29,465	29,465

New Jersey's Clean Energy Program
RE Electric Generation for Reporting Year 2011

Statewide Summary: Renewable Energy Programs Reporting Period: YTD thru 4th Quarter 2011 (Electric Generation)	Capacity			Annual Generation			Lifetime Generation		
	Installed	Committed	Installed and Committed	Installed	Committed	Installed and Committed	Installed	Committed	Installed and Committed
	kW	kW	kW	MWh	MWh	MWh	MWh	MWh	MWh
RENEWABLE PROGRAMS									
Customer On-Site Renewable Energy (CORE)	5,800	4,366	10,166	6,961	5,239	12,200	139,211	104,779	243,990
Renewable Energy Incentive Program	17,842	5,869	23,711	21,411	7,043	28,454	428,211	140,862	569,073
Renewable Energy Program: Grid Connected (REDI)	0	6,500	6,500	0	23,926	23,926	0	528,530	528,530
SREC Registration	294,745	578,350	873,096	353,694	694,020	1,047,714	7,073,890	13,880,410	20,954,300
Sub-Total: Renewable Programs	318,388	595,085	913,473	382,066	730,228	1,112,294	7,641,312	14,654,581	22,295,893
TOTAL Renewable Energy Programs	318,388	595,085	913,473	382,066	730,228	1,112,294	7,641,312	14,654,581	22,295,893

New Jersey's Clean Energy Program
Gas Savings for Reporting Year 2011

Statewide Summary: Energy Efficiency Programs Reporting Period: YTD thru 4th Quarter 2011 (Energy Savings)	Annual Savings			Lifetime Savings		
	Installed	Committed	Installed and Committed	Installed	Committed	Installed and Committed
	DTh	DTh	DTh	DTh	DTh	DTh
RESIDENTIAL PROGRAMS						
Residential HVAC - Electric & Gas	343,759		343,759	6,779,179		6,779,179
Residential New Construction	60,733	74,876	135,609	1,214,660	1,497,520	2,712,180
Energy Efficient Products	27,056		27,056	538,665		538,665
Home Performance with ENERGY STAR	95,298		95,298	2,058,387		2,058,387
Sub-Total: Residential EE Programs	526,846	74,876	601,722	10,590,890	1,497,520	12,088,410
RESIDENTIAL LOW INCOME PROGRAMS						
Comfort Partners	88,278		88,278	1,264,890		1,264,890
Sub-Total: Residential Low Income Programs	88,278		88,278	1,264,890		1,264,890
COMMERCIAL & INDUSTRIAL PROGRAMS						
C&I New Construction	4,361	31,528	35,889	67,666	504,953	572,619
C&I Retrofit	56,381	224,832	281,212	1,026,019	4,392,557	5,418,576
Pay-for-Performance New Construction	0	7,716	7,716	0	223,315	223,315
Pay-for Performance	45,344	270,852	316,196	527,074	4,620,736	5,147,810
Combined Heat and Power (CHP)	0	5,202	5,202	0	62,424	62,424
Direct Install	61,347	59,801	121,148	1,016,634	970,820	1,987,455
Large Energy Users Pilot	0	0	0	0	0	0
Sub-Total: C&I Programs	167,433	599,931	767,363	2,637,393	10,774,805	13,412,199
TOTAL Energy Efficiency Programs	782,557	674,807	1,457,363	14,493,173	12,272,325	26,765,499

New Jersey's Clean Energy Program
Emissions Reductions for Reporting Year 2011

Statewide Summary: New Jersey's Clean Energy Program
 Reporting Period: YTD thru 4th Quarter 2011

Program	Annual Emissions Reductions (metric tons)				Lifetime Emissions Reductions (metric tons)			
	CO2	NOx	SO2	Hg	CO2	NOx	SO2	Hg
Energy Efficiency Programs (Electric and Gas)	415,698	342	969	0.0073	4,795,368	3,934	10,428	0.0790
Renewable Energy Programs	315,031	260	816	0.0062	6,300,609	5,210	16,325	0.1237
TOTAL - All Programs	730,729	603	1,785	0.0135	11,095,977	9,144	26,752	0.2026

New Jersey's Clean Energy Program
Emissions Reductions for Reporting Year 2011

Statewide Summary: Electric Energy Efficiency Programs
 Reporting Period: YTD thru 4th Quarter 2011

Program	Annual Emissions Reductions (metric tons)				Lifetime Emissions Reductions (metric tons)			
	CO2	NOx	SO2	Hg	CO2	NOx	SO2	Hg
RESIDENTIAL PROGRAMS								
Residential HVAC - Electric & Gas	10,194	8	26	0.0002	173,448	143	449	0.0034
Residential New Construction	3,762	3	10	0.0001	75,232	62	195	0.0015
Energy Efficient Products	203,846	169	528	0.0040	1,407,315	1,164	3,646	0.0276
Home Performance with ENERGY STAR	1,757	1	5	0.0000	31,591	26	82	0.0006
Sub-Total: Residential EE Programs	219,559	182	569	0.0043	1,687,586	1,395	4,372	0.0331
RESIDENTIAL LOW INCOME PROGRAMS								
Comfort Partners	8,302	7	22	0.0002	73,768	61	191	0.0014
Sub-Total: Residential Low Income Programs	8,302	7	22	0.0002	73,768	61	191	0.0014
COMMERCIAL & INDUSTRIAL PROGRAMS								
C&I New Construction	13,945	12	36	0.0003	217,779	180	564	0.0043
C&I Retrofit	85,225	70	221	0.0017	1,354,380	1,120	3,509	0.0266
Pay-for-Performance New Construction	0	0	0	0.0000	0	0	0	0.0000
Pay-for Performance	12,716	11	33	0.0002	178,565	148	463	0.0035
Combined Heat and Power (CHP)	0	0	0	0.0000	0	0	0	0.0000
Direct Install	34,334	28	89	0.0007	512,517	424	1,328	0.0101
Large Energy Users Pilot	0	0	0	0.0000	0	0	0	0.0000
Sub-Total: C&I Programs	146,219	121	379	0.0029	2,263,240	1,871	5,864	0.0444
TOTAL Energy Efficiency Programs	374,080	309	969	0.0073	4,024,594	3,328	10,428	0.0790

New Jersey's Clean Energy Program
Emissions Reductions for Reporting Year 2011

Statewide Summary: Gas Energy Efficiency Programs Reporting Period: YTD thru 4th Quarter 2011	Annual Emissions Reductions (metric tons)		Lifetime Emissions Reductions (metric tons)	
	CO2	NOx	CO2	NOx
Program				
RESIDENTIAL PROGRAMS				
Residential HVAC - Electric & Gas	18,282	14	360,529	283
Residential New Construction	3,230	3	64,598	51
Energy Efficient Products	1,439	1	28,647	23
Home Performance with ENERGY STAR	5,068	4	109,469	86
Sub-Total: Residential EE Programs	28,019	22	563,243	443
RESIDENTIAL LOW INCOME PROGRAMS				
Comfort Partners	4,695	4	67,269	53
Sub-Total: Residential Low Income Programs	4,695	4	67,269	53
COMMERCIAL & INDUSTRIAL PROGRAMS				
C&I New Construction	232	0	3,599	3
C&I Retrofit	2,998	2	54,566	43
Pay-for-Performance New Construction	0	0	0	0
Pay-for Performance	2,411	2	28,031	22
Combined Heat and Power (CHP)	0	0	0	0
Direct Install	3,263	3	54,066	43
Large Energy Users Pilot	0	0	0	0
Sub-Total: C&I Programs	8,904	7	140,261	110
TOTAL Energy Efficiency Programs	41,618	33	770,773	606

New Jersey's Clean Energy Program
Emissions Reductions for Reporting Year 2011

Statewide Summary: Renewable Energy Programs
 Reporting Period: YTD thru 4th Quarter 2011

Program	Annual Emissions Reductions (metric tons)				Lifetime Emissions Reductions (metric tons)			
	CO2	NOx	SO2	Hg	CO2	NOx	SO2	Hg
RENEWABLE PROGRAMS								
Customer On-Site Renewable Energy (CORE)	5,740	5	15	0.0001	114,786	95	297	0.0023
Renewable Energy Incentive Program	17,654	15	46	0.0003	353,079	292	915	0.0069
Renewable Energy Program: Grid Connected (REDI)	0	0	0	0.0000	0	0	0	0.0000
SREC Registration	291,637	241	756	0.0057	5,832,744	4,823	15,112	0.1145
TOTAL Renewable Energy Programs	315,031	260	816	0.0062	6,300,609	5,210	16,325	0.1237

Section V

Note and Defintions

Notes

1	For Residential New Construction actual participation figures represent results reported by Honeywell and electric utilities only. For Utility Comfort Partners actual participation figures represent results reported by electric utilities only.
2	Expenses for the REC Certificates/SREC Program are reported under the Renewable Energy Incentive Program (REIP) in the following worksheets. The capacity, generation and emissions reductions for the REC Certificate/SREC Program are reported separately from the Renewable Energy Incentive Program (REIP).

Definitions

1	A commitment exists where the associated customer has received a letter of commitment or other signed agreement from the NJCEP and the project is slated for completion prior to an expiration date. Once completed and paid, a committed project is shifted from "Committed" to "Installed". Committed figures are adjusted to reflect any commitments that are cancelled.
2	Committed Expenditures are those expenditures related to commitments made in the reporting period, but not expected to arise until some future reporting period. A committed expenditure may also be represented by a contractor who has completed the work, but has yet to be paid.
3	Administration and Program Development Expenditures are direct labor and employee overhead costs incurred in developing and managing the New Jersey's Clean Energy Programs by the NJBPU's Office of Clean Energy, the utility program managers, the Economic Development Authority, or any other program manager, except those costs that are appropriately allocated to any of the other expense categories described below, plus the costs of facilities (including telephone, computers, supplies, etc.) and legal support services. For the NJCEP Market Managers, Administration and Program Development Expenditures are those costs identified in the market manager contracts as "Program Administration" costs.
4	Sales, Call Centers, Marketing and Website Expenditures - Sales and Call Center Expenditures are expenses related to the enrollment of program participants and in working with trade allies. This category includes activities that close leads and those that involve direct interaction with customers, either in person or over the telephone. It also includes inbound and outbound telemarketing and call center activities. - Marketing and Website Expenditures are costs incurred for advertising, promotions, third-party or internal marketing, advertising agency activities and services, postage, and exhibits and trade shows. Marketing activities are those that generate leads and general program awareness and include the development and production of collateral materials such as brochures, direct mail materials, etc.
5	Training Expenditures are costs related to training including the planning and execution of training events, seminar materials, etc.
6	Rebates, Grants and Other Direct Incentives are rebates and other direct incentives paid to participating customers, along with the cost of any measures installed in customer homes, and any payments made pursuant to any Clean Energy Program grant.
7	Rebate Processing, Inspections and Other Quality Control Expenditures are costs incurred in processing and tracking rebate, grant and other program applications and payments, and in inspecting qualified projects to ensure compliance with program requirements and other quality control measures.
8	Evaluation and Related Research Expenditures are costs related to market research and program evaluation, including the collection and input of information, technical support, collaborative input, process support, and any required outside studies.
9	Performance Incentives are costs related to any performance incentives awarded to Market Managers or other program managers pursuant to an NJBPU Order.
10	Installed Savings represents the savings accrued as a result of the initiation of a given program and the installation of recorded measures.
11	Committed Savings represents the savings that will accrue from commitments for program participation made in the reporting period, but scheduled for installation in future reporting periods.
12	Annual Savings means the yearly (12 months) savings that will result from a measure installed or committed to during the program year.
13	Lifetime Savings means the savings to be accrued over the expected life of a measure installed or committed to during the program year.
14	DEP Emissions Reduction Factors for electric programs are as follows: - CO ₂ (Carbon Dioxide) emissions are reduced by 1,814 lbs per MWh saved - NO _x (Nitric Oxide) emissions are reduced by 1.5 lbs. per MWh saved - SO ₂ (Sulfur Dioxide) emissions are reduced by 4.7 lbs per MWh saved - Hg (Mercury) emissions are reduced by .0000356 lbs per MWh saved
15	DEP Emissions Reduction Factors for gas programs are as follows: - CO ₂ (Carbon Dioxide) emissions are reduced by 11.7 lbs per Therm saved - NO _x (Nitric Oxide) emissions are reduced by .0092 lbs. per Therm saved

Definitions (Cont'd)

16	Units of Measure for Tracking Metrics:	
RESIDENTIAL ENERGY EFFICIENCY PROGRAMS		
Residential HVAC		
- COOL Advantage Completed Applications	=	Number of central air conditioners and heat pumps rebated
- WARM Advantage Completed Applications	=	Number of furnaces, boilers and hot water heaters rebated
Residential New Construction		
- Enrollments	=	Number of homes enrolled with commitments to build to RNC efficiency standards
- Completions	=	Number of homes completed per RNC efficiency standards
Energy Efficient Products		
- CFLs Distributed	=	Number of CFLs and Fixtures distributed
- Clothes Washer Applications Completed	=	Number of clothes washers rebated
- Large Appliance Recycling Applications Completed	=	Number of recycled large appliances rebated
- Consumer Electronics Applications Completed	=	Number of set-top boxes, televisions, etc. distributed
Home Performance with ENERGY STAR		
- Tier 2 Enrollments	=	Number of homes approved to complete Tier 2 HPwES measures
- Tier 2 Completions	=	Number of homes that completed Tier 2 HPwES measures
- Tier 3 Enrollments	=	Number of homes approved to complete Tier 3 HPwES measures
- Tier 3 Completions	=	Number of homes that completed Tier 3 HPwES measures
RESIDENTIAL LOW INCOME PROGRAMS		
Comfort Partners		
- Homes Completed	=	Number of homes with electric measures installed (gas homes completed is a subset of electric homes completed)
COMMERCIAL & INDUSTRIAL PROGRAMS		
C&I New Construction		
- Applications Approved	=	Number of applications approved
- Applications Completed	=	Number of applications rebated
C&I Retrofit		
- Applications Completed	=	Number of applications rebated
Pay-for-Performance (Retrofit and New Construction)		
- Energy Reduction Plans Approved	=	Number of projects that have approved ERPs
- Installations Completed	=	Number of projects that have completed installation of recommended measures
- M&V Reports Completed	=	Number of projects that have completed their measurement and verification report
Combined Heat and Power		
- Applications Completed	=	Number of applications rebated
Local Government Energy Audit		
- Audits Reviewed and Processed	=	Number of audit applications reviewed and processed
- Audits Rebated	=	Number of audit applications rebated
Direct Install		
- Applications Completed	=	Number of projects completed
TEACH		
- School Districts	=	Number of school districts participating
- Schools	=	Number of schools participating
Large Energy Users Pilot		
- Applications Approved	=	Number of applications approved
- Applications Completed	=	Number of applications rebated

Definitions (Cont'd)

16 (cont'd)	RENEWABLE ENERGY PROGRAMS	
	Customer On-Site Renewable Energy (CORE)	
	- Applications Completed	= Number of applications rebated
	Renewable Energy Incentive Program (REIP)	
	- Applications Completed	= Number of applications rebated
	SREC Registration Program	
	- Applications Approved	= Number of applications approved
	- Applications Completed	= Number of applications rebated
	CleanPower Choice	
	- Total Enrollments	= Number of customers signed in for all utilities
	Renewable Energy Program: Grid Connected (Formerly REDI)	
	- Completed Grants	= Number of grants that have been paid in full
	- Number of Open Grants	= Number of grants with outstanding commitments
	Edison Innovation Clean Energy Fund (CST)	
	- Completed Grants	= Number of grants that have been paid in full
	- Number of Open Grants	= Number of grants with outstanding commitments
	EDA PROGRAMS	
	Edison Innovation Clean Energy Manufacturing Fund (CEMF)	
	- Completed Grants	= Number of grants that have been paid in full
	- Number of Open Grants	= Number of grants with outstanding commitments
	Edison Innovation Green Growth Fund (EIGGF)	
	- Completed Grants	= Number of grants that have been paid in full
	- Number of Open Grants	= Number of grants with outstanding commitments
	EE Revolving Loan Fund (EERLF)	
	- Number of Open Loans	= Number of loans with outstanding commitments