

**Solar 4 All Monthly Activity Report - August 2021**

Site	Property Owner	Cost per Project (\$k)	NPV of 20 Year Lease Cost (\$k)	EPC Contractor	Site Location Address
<b>Segment 1a</b>					
Linden	PSE&G		N/A	ASP	South Wood Avenue, Linden, NJ 07036
Yardville	PSE&G		N/A	ACE	Broad Street, Hamilton, NJ 08611
Silver Lake	PSE&G		N/A	JFC	410 Silver Lake Avenue, Edison, NJ 08817
Trenton	PSE&G		N/A	SunEdison	500-520 Brunswick Avenue, Trenton, NJ 08638
Central HQ	PSE&G		N/A	Solis (Solyndra)	472 Weston Canal Road, Franklin, NJ 08873
Edison Training	PSE&G		N/A	Henkle & McCoy	234 Pierson Avenue, Edison, NJ 08837
Thorofare	PSE&G		N/A	SunEdison	Jessup Road, Thorofare, NJ 08086
Hackensack	PSE&G		N/A	JFC	194-210 South River Street, Hackensack NJ 07601
Metro/Clifton	PSE&G		N/A	Gloria Solar	150 Circle Ave, Clifton, NJ 07011
S. DivHQ Moorestown	PSE&G		N/A	Vanguard	360 New Albany Road, Moorestown, NJ
<b>Segment 1b</b>					
CPP Bayonne	CenterPoint Properties		\$1,402	ASP	30-100 Pulaski Street, Bayonne, NJ 07002
Matrix - Stults Rd	Matrix Development Group		\$2,228	Pro-Tech	45 Stults Rd, 'South Brunswick, NJ 08810
Rider	Rider University		\$642	Alteris	2083 Lawrenceville Road, Lawrenceville, NJ 08648
NJMC / Kearny Landfill	NJ Meadowland Commission		\$2,561	Sundurance	932 Bellville Turnpike, Kearny, Hudson County NJ 07032
Mill Creek	Judith Tucci		\$3,189	Juwi	600 Irick Road, Westampton, NJ 08060
Food Bank	Community Food Bank of NJ		\$772	Mercury	31 Evans Terminal, Hillside, NJ 07250
Raritan Center	Summit Associates Inc.		\$1,729	ASP	45 Fernwood Avenue and 110 Fieldcrest Avenue, Edison, NJ 08818
BlackRock-Matrix	Granite South Brunswick, LLC		\$1,800	Pro-Tech	140 Docks Corner Road, South Brunswick, NJ 08810
<b>Segment 1c</b>					
Matrix Bldg A & B	Matrix Development		\$2,191	enXco	1000 & 1050 Amboy Ave, Perth Amboy, NJ 08861
Barringer	Newark Public Schools		\$635	Mercury	90 Parker St, Newark, NJ 07104
Park	Newark Public Schools		\$482	Mercury	120 Manchester Place, Newark, NJ 07104-1704
Camden (NWK)	Newark Public Schools		\$971	ALM	281 & 321 Camden Street Newark, New Jersey 07103
New Central HS	Newark Public Schools		\$495	LB Electric	246 18th Ave, Newark, NJ 07108
<b>Segment 2</b>					
Pole-Attached	PSE&G		N/A	Riggs-Distler	Various

Notes:

"Cost per Project" corresponds to projects that have been placed in service.

"NPV of 20 Year Lease Cost" is derived using an annual discount rate of 5.07%

Regarding Segment 2 (Pole-attached): Riggs Distler is the installation contractor, not an EPC contractor

"Cost per Project" includes AFUDC

**Solar 4 All Monthly Activity Report - August 2021**

Site	Owner location	Type of customer	Status of the installation	Capacity of Project (MW-DC)
<b>Segment 1a</b>				
Linden	80 Park Plaza, Newark, NJ 07102	Utility	Commercial Operation	3.20
Yardville	80 Park Plaza, Newark, NJ 07102	Utility	Commercial Operation	4.30
Silver Lake	80 Park Plaza, Newark, NJ 07102	Utility	Commercial Operation	2.02
Trenton	80 Park Plaza, Newark, NJ 07102	Utility	Commercial Operation	1.26
Central HQ	80 Park Plaza, Newark, NJ 07102	Utility	Commercial Operation	0.92
Edison Training	80 Park Plaza, Newark, NJ 07102	Utility	Commercial Operation	0.71
Thorofare	80 Park Plaza, Newark, NJ 07102	Utility	Commercial Operation	0.72
Hackensack	80 Park Plaza, Newark, NJ 07102	Utility	Commercial Operation	1.05
Metro/Clifton	80 Park Plaza, Newark, NJ 07102	Utility	Commercial Operation	0.73
S. DivHQ Moorestown	80 Park Plaza, Newark, NJ 07102	Utility	Commercial Operation	1.07
<b>Segment 1b</b>				
CPP Bayonne	1808 Swift Drive, Oak Brook, IL 60523-1501	Warehouse	Commercial Operation	1.70
Matrix - Stults Rd	Forsgate Drive CN 4000, Cranbury, NJ 08512	Warehouse	Commercial Operation	2.98
Rider	2083 Lawrenceville Road, Lawrenceville, NJ 08548	University	Commercial Operation	0.74
NJMC / Kearny Landfill	One DeKorte Park Plaza, Lyndhurst, NJ 07071	Landfill	Commercial Operation	3.00
Mill Creek	4 St. Albans Place, Haworth, NJ 07641	Private Landowner	Commercial Operation	3.82
Food Bank	31 Evans Terminal Rd, Hillside, New Jersey 07250	Warehouse	Commercial Operation	1.07
Raritan Center	Raritan Plaza I, Edison, NJ 08818	Warehouse	Commercial Operation	2.22
BlackRock-Matrix	BlackRock, 40 E. 52nd Street, New York, NY 10022	Warehouse	Commercial Operation	2.97
<b>Segment 1c</b>				
Matrix Bldg A & B	Forsgate Drive CN 4000, Cranbury, NJ 08512	Warehouse	Commercial Operation	2.86
Barringer	Newark Public Schools, 2 Cedar Street, Newark NJ 07102-3051	Public Schools	Commercial Operation	0.65
Park	Newark Public Schools, 2 Cedar Street, Newark NJ 07102-3051	Public Schools	Commercial Operation	0.51
Camden (NWK)	Newark Public Schools, 2 Cedar Street, Newark NJ 07102-3051	Public Schools	Commercial Operation	0.91
New Central HS	Newark Public Schools, 2 Cedar Street, Newark NJ 07102-3051	Public Schools	Commercial Operation	0.50
<b>Segment 2</b>				
Pole-Attached	80 Park Plaza, Newark, NJ 07102	Utility	Commercial Operation	36.94

**Solar 4 All Monthly Activity Report - August 2021**

Site	Equipment installed (Inverters; Panels)
<b>Segment 1a</b>	
Linden	Six Sunny Central SC500-HE-US inverters; 7,766 Suntech STP280-24/Vd, 3,718 STP275-24/Vd panels
Yardville	Eight Advanced Energy Solaron 3159500-0001A2 inverters, one Solaron 250 inverters; 5,640 Suntech STP270-24/VD, 4,368 STP275-24/VD, 1,512 STP280-24/VD panels
Silver Lake	Three SMA Sunny Central SC 500U, one SC 250U inverters; 3,514 Sharp ND-224UC1, 5,236 ND-U235F1
Trenton	Three Satcon PowerGate Plus PVS-500 inverters; 5,496 Yingli Solar YL230b-29b panels
Central HQ	10 SMA Tripower 15kw inverters, 29 SMA Tripower 20kw Inverters; 4,180 Solyndra SL-001-182U, 648 Solar World SW240MONO panels
Edison Training	7 50kw SMA Tripower inverters, 1 30kw SMA Inverter, 4 24kw SMA Inverter, 10 15kw SMA Inverter; 3,164 Gloria Solar GSM6-225D-E1 panels
Thorofare	One Advanced Energy Solaron-500kW, one Solaron-250kW inverters; 2,618 SunTech STP275-24Vd panels
Hackensack	Two Advanced Energy Solaron-500kW, 4,472 MX Solar MX-60-235 panels
Metro/Clifton	Four Satcon Powergate Plus PVS-75, two PVS-135 inverters; 3,122 Gloria Solar GSM6-235D-E1 panels
S. DivHQ Moorestown	Three Advanced Energy PVP 260 Inverters; one PVP 100 and one PVP 50 Inverter. 4,563 MX60-235 panels
<b>Segment 1b</b>	
CPP Bayonne	15 SolarEdge SE100KUS inverters and three SolarEdge SE33.3KUS inverters; 7,730 Trina Solar TSM-220PA05 panels
Matrix - Stults Rd	Five Solaron 3159500-1001AD inverters; 12,684 Kyocera K0235GX-LPB panels
Rider	Two AEI inverters; 2,640 Suntech STP-280 panels
NJMC / Kearny Landfill	Seven Advanced Energy Solaron inverters 2x500kW, 3x333kW, 2x250kW; 12,506 Kyocera KD240GX-LFB panels
Mill Creek	Seven SMA America SC500U inverters; 29,400 Solar Frontier SF-130-L panels
Food Bank	121 ProHarvest HiQ Inverters; 4,667 Trina Solar TSM-230PA05 panels
Raritan Center	235 ProHarvest HiQ inverters; 7,098 Hyundai HIS-M230SG, 2,604 HIS-M227SG panels
BlackRock-Matrix	Five AE Solaron 3159000-1001AJ inverters; 12,376 Upsolar UP-M240P panels
<b>Segment 1c</b>	
Matrix Bldg A & B	300 ProHarvest HiQ inverters; 10,395 Suntech STP275-24VD panels
Barringer	73 ProHarvest HiQ inverters; 2,310 Suntech STP280-24VB-1 panels
Park	One Satcon PowerGate Plus PVS-375, 8 ProHarvest HiQ inverters; 1,440 Sunpower PL-SUN-SPR-305-U, 264 Suntech STP270-24/VB-1 panels
Camden (NWK)	101 ProHarvest HiQ Inverters; 3,264 ET Solar ET-P672280 panels
New Central HS	58 ProHarvest HiQ inverters; 1,857 Suntech STP270-24/VB-1 panels
<b>Segment 2</b>	
Pole-Attached	Suntech STP200-18/UB-1, STP205-18/UD, STP210-18/UB-1, STP215-20/WD, STP220-20/WD, STP225-20/WD, Trina Solar TSM-220PA05, TSM-225PA05, TSM-235PA05, TSM-240PA05

**Solar 4 All Monthly Activity Report - August 2021**

August 2021 Monthly Update												
Segment	Energy Produced (MWh AC)	Net Energy Sales (\$)	SREC's Sold	SREC Revenue (\$)	Capacity Sold (MW-days)	Net Capacity Sales (\$)	Business Interruption Insurance Recovery (\$)	Investment (\$)	Program Expenses (\$)	Projects Completed / Seg 2 Panels Installed	MW Installed	Pole-attached Units Communicating
Segment 1a	1,294	\$ 66,096	-	\$ -	-	\$ -	\$0	\$4,235	\$249,189	0	0.0	
Segment 1b	2,061	\$ 105,964	-	\$ -	-	\$ -	\$0	\$250,283	\$159,609	0	0.0	
Segment 1c	543	\$ 28,178	-	\$ -	-	\$ -	\$0	\$0	\$28,236	0	0.0	
Segment 2	3,184	\$ 164,253	-	\$ -	-	\$ -	\$0	\$43,907	\$432,968	0	0.000	157,054
<b>Program Total</b>	<b>7,081</b>	<b>\$ 364,492</b>	<b>-</b>	<b>\$ -</b>	<b>-</b>	<b>\$ -</b>	<b>\$0</b>	<b>\$298,425</b>	<b>\$870,001</b>	<b>0</b>	<b>0.000</b>	

**Solar 4 All Year-to-Date Activity Report**

Year-to-Date Update through August 2021												
Segment	Energy Produced (MWh AC)	Net Energy Sales (\$)	SREC's Sold	SREC Revenue (\$)	Capacity Sold (MW-days)	Net Capacity Sales (\$)	Business Interruption Insurance Recovery (\$)	Investment (\$)	Program Expenses (\$)	Projects Completed / Seg 2 Panels Installed	MW Installed	
Segment 1a	11,805	\$ 278,820	8,724	\$ 2,016,188	-	\$ -	\$0	\$3,332,826	\$765,292	0	0.0	
Segment 1b	15,211	\$ 432,430	10,794	\$ 2,496,663	-	\$ -	\$0	\$2,252,810	\$1,492,424	0	0.0	
Segment 1c	4,046	\$ 113,788	2,632	\$ 608,814	-	\$ -	\$0	\$0	\$503,493	0	0.0	
Segment 2	25,780	\$ 745,513	19,476	\$ 4,507,890	-	\$ -	\$0	\$334,660	\$3,575,673	0	0.000	
<b>YTD Program Total</b>	<b>56,843</b>	<b>\$ 1,570,551</b>	<b>41,626</b>	<b>\$ 9,629,555</b>	<b>-</b>	<b>\$ -</b>	<b>\$0</b>	<b>\$5,920,296</b>	<b>\$6,336,883</b>	<b>0</b>	<b>0</b>	

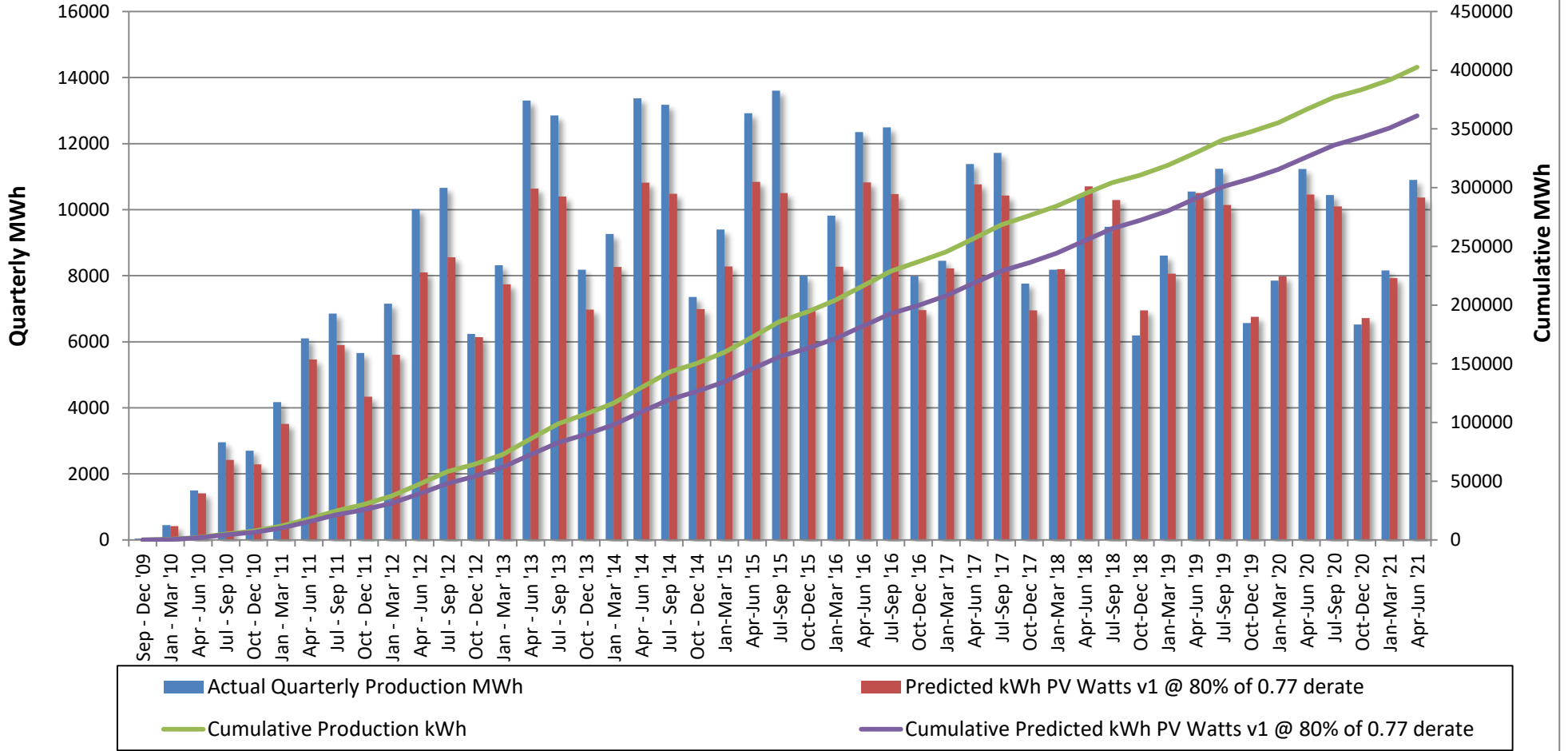
**Solar 4 All Program-to-Date Activity Report**

Program-to-Date through August 2021												
Segment	Energy Produced (MWh AC)	Net Energy Sales (\$)	SREC's Sold	SREC Revenue (\$)	Capacity Sold (MW-days)	Net Capacity Sales (\$)	Business Interruption Insurance Recovery (\$)	Investment (\$)	Program Expenses (\$)	Projects Completed / Seg 2 Panels Installed	MW Installed	
Segment 1a	193,691	\$6,345,058	189,310	\$41,323,017	15,316.7	\$2,286,339	\$320,277	\$96,136,039	\$8,452,395	10	16.0	
Segment 1b	221,085	\$7,883,998	214,295	\$44,688,451	16,886.7	\$2,807,758	\$457,127	\$83,506,205	\$21,990,315	8	18.5	
Segment 1c	63,180	\$2,070,258	60,423	\$13,106,486	5,958.6	\$812,967	\$0	\$35,916,068	\$8,116,600	6	5.4	
Segment 2	366,988	\$14,484,557	373,798	\$82,417,982	33,520.0	\$5,163,194	\$0	\$279,009,767	\$36,357,237	166,756	36.9	
<b>Program-to-date Total</b>	<b>844,944</b>	<b>\$30,783,871</b>	<b>837,826</b>	<b>\$181,535,936</b>	<b>71,682.0</b>	<b>\$11,070,259</b>	<b>\$777,404</b>	<b>\$494,568,080</b>	<b>\$74,916,546</b>	<b>166,780</b>	<b>76.9</b>	

**Notes:**

- 1) "SREC's Sold" and "SREC Revenue" includes vintage year 2011 through 2021 SRECs
- 2) Monthly "Pole-attached Units Installed" & "Pole-attached MW Installed" are preliminary estimates and subject to change. Adjustments to prior months will be reflected in YTD values. Capacity specified in certain previously filed capacity reports represented gross installed capacity. The values shown in the table above account for net installed capacity (total installs minus total removals).
- 3) "Pole Attached Units Communicating" represents the *average, daily* number of panels that communicated during the month.
- 4) The columns "Energy Produced" and "SRECs Sold" do not sync because of the timing of SREC auctions, through which SRECs are sold.
- 5) Business interruption insurance recovery received for lost energy sales and SREC sales due to Superstorm Sandy

### PSE&G Pole-Attached Solar: Quarterly Performance vs. PV Watts @ 80% of 0.77



**Total S4A Fleet Performance:**

August weather conditions were not favorable for solar production. Actual monthly production compared to plan is -7.15%

**Seg2 (Pole Attached Solar):**

- Ongoing maintenance of existing installations continues.

**REDACTED**

<b>PSE&amp;G Pole-Attached -- Summary by Municipality -- August 2021</b>		
	<b>Total</b>	<b>Total kWdc</b>
Allentown Boro	51	10.99
Audubon Boro	475	101.59
Audubon Park Boro	41	8.56
Barrington Boro	338	73.36
Bayonne City	1,575	359.15
Belleville Twp	740	172.49
Bellmawr Boro	934	201.45
Bergenfield Boro	415	93.6
Berkeley Heights Twp	5	1.2
Beverly City	260	54.78
Bloomfield Twp	990	233.98
Bogota Boro	179	42.13
Bordentown City	60	12.89
Bordentown Twp	802	172.63
Bound Brook Boro	372	85.16
Branchburg Twp	22	5.28
Bridgewater Twp	1,594	358.35
Brooklawn Boro	217	45.81
Burlington City	1,191	253.08
Burlington Twp	1,169	245.07
Caldwell Boro	189	44.66
Camden City	5,145	1,123.14
Carlstadt Boro	628	146.66
Carteret Boro	1,497	322.57
Cedar Grove Twp	500	117.45
Cherry Hill Twp	2,908	623.01
Chesterfield Twp	385	83
Cinnaminson Twp	1,190	249.53
Clark Twp	621	138.73
Cliffside Park Boro	274	64.82
Clifton City	2,995	697.96
Collingswood Boro	652	140.33
Cranbury Twp	257	56.31
Cranford Twp	677	151.73
Cresskill Boro	2	0.44
Delanco Twp	290	60.21
Delran Twp	600	125.99
Deptford Twp	1,609	349.74
Dumont Boro	423	94.73
Dunellen Boro	273	61.59
East Amwell Twp	2	0.41
East Brunswick Twp	2,023	443.94
East Newark Boro	27	6
East Orange City	1,169	275.77
East Rutherford Boro	407	95.31
Eastampton Twp	288	59.99
Edgewater Boro	106	24.72
Edgewater Park Twp	501	103.37
Edison Twp	4,432	969.8
Elizabeth City	2,936	644.17
Elizabeth City	249	55.49

\*Latest installation date 9/10/21

\*Installs pending municipal data updates not included in total

**REDACTED**

<b>PSE&amp;G Pole-Attached -- Summary by Municipality -- August 2021</b>		
	<b>Total</b>	<b>Total kWdc</b>
Elmwood Park Boro	701	161.03
Emerson Boro	259	57.86
Englewood City	770	177.7
Englewood Cliffs Boro	237	56.11
Essex Fells Twp	59	13.86
Evesham Twp	727	154.68
Ewing Twp	2,322	500.09
Fair Lawn Boro	1,027	229.06
Fairfield Twp Ess	1015	237.12
Fairview Boro	244	57
Fanwood Boro	246	56.71
Fieldsboro Boro	63	13.96
Florence Twp	848	179.44
Fort Lee Boro	619	145.99
Franklin Twp Som	2672	580.05
Franklin Twp Som	82	18.52
Garfield City	572	133.32
Garwood Boro	231	52.59
Glen Ridge Boro	13	3.1
Glen Rock Boro	130	29.25
Gloucester City	743	159.72
Gloucester Twp	1629	351.47
Green Brook Twp	276	62.47
Guttenberg Town	20	4.77
Hackensack City	1309	303.51
Haddon Heights Boro	340	75.09
Haddon Twp	863	185.39
Haddonfield Boro	151	33.97
Hainesport Twp	446	95.37
Haledon Boro	110	24.69
Hamilton Twp Mer	6267	1350.9
Harrison Town	233	52.93
Hasbrouck Heights	353	82.63
Haworth Boro	35	8.04
Hawthorne Boro	422	93.48
Highland Park Boro	460	102.42
Hillsborough Twp	1531	337
Hillsborough Twp	0	0
Hillsdale Boro	13	3.06
Hillside Twp	584	128.82
Hillside Twp	3	0.62
Hi-Nella Boro	49	10.52
Hoboken City	243	57.35
Hohokus Boro	34	7.56
Hopewell Boro	71	16.66
Hopewell Twp Mer	465	102.63
Irvington Town	1,002	223.47
Jersey City	3636	827.02
Kearny Town	0	0
Kearny Town	1147	257.58
Kenilworth Boro	309	68.97

\*Latest installation date 9/10/21

\*Installs pending municipal data updates  
not included in total



**REDACTED**

<b>PSE&amp;G Pole-Attached -- Summary by Municipality -- August 2021</b>		
	<b>Total</b>	<b>Total kWdc</b>
Lawnside Boro	243	52.43
Lawrence Twp Mer	1386	299.73
Leonia Boro	177	41.4
Lincoln Park Boro	5	1.17
Linden City	2264	485.35
Little Falls Twp	399	92.86
Little Ferry Boro	428	98.95
Livingston Twp	0	0
Livingston Twp	429	101.41
Lodi Boro	618	143.47
Lumberton Twp	423	88.47
Lyndhurst Twp	839	196.51
Magnolia Boro	372	83.19
Mansfield Twp Bur	514	106.83
Manville Boro	574	129.72
Maple Shade Twp	1153	243.44
Maplewood Twp	359	80.98
Maywood Boro	199	46.93
Medford Lakes Boro	28	5.9
Medford Twp	551	115.14
Merchantville Boro	187	40.18
Metuchen Boro	527	116.89
Middlesex Boro	884	198.28
Midland Park Boro	75	17.71
Millburn Twp	7	1.66
Millstone Boro	36	7.9
Milltown Boro	2	0.44
Monroe Twp Mid	3	0.63
Montclair Twp	678	161.62
Montgomery Twp	19	4.25
Montgomery Twp	708	155.98
Moonachie Boro	349	79.52
Moorestown Twp	1026	219.61
Mount Ephraim Boro	333	70.9
Mount Holly Twp	502	106.44
Mount Laurel Twp	984	208.13
Mountainside Boro	287	66.04
National Park Boro	344	75.22
New Brunswick City	1,548	333.85
New Milford Boro	285	64.7
Newark City	7,168	1606.92
North Arlington Boro	491	113.45
North Bergen Twp	1143	267.45
North Brunswick Twp	1700	372.47
North Caldwell Twp	184	42.51
North Haledon Boro	47	10.82
North Hanover Twp	0	0
North Plainfield Boro	532	119.89
Nutley Town	526	123.92
Oaklyn Boro	264	55.61
Old Tappan Boro	7	1.68

\*Latest installation date 9/10/21

\*Installs pending municipal data updates  
not included in total

**REDACTED**

<b>PSE&amp;G Pole-Attached -- Summary by Municipality -- August 2021</b>		
	<b>Total</b>	<b>Total kWdc</b>
Oradell Boro	92	20.42
Orange City	525	124.67
Palisades Park Boro	392	92.44
Palmyra Boro	402	83.99
Paramus Boro	671	152.03
Park Ridge Boro	0	0
Passaic City	992	231.57
Paterson City	3028	689.56
Paulsboro Boro	6	1.24
Pemberton Twp	86	17.98
Pennington Boro	79	18.38
Pennsauken Twp	3,163	665.87
Perth Amboy City	1,404	305.9
Piscataway Twp	2576	560.32
Plainfield City	1528	341.41
Plainsboro Twp	217	47.73
Princeton Boro	44	10.02
Princeton Twp	110	24.03
Prospect Park Boro	106	23.8
Rahway City	1335	301.03
Raritan Boro	268	58.94
Ridgefield Boro	331	77.32
Ridgefield Park Village	373	88.2
Ridgewood Village	129	29.18
River Edge Boro	266	61
River Vale Twp	10	2.2
Riverside Twp	544	113.34
Riverton Boro	107	23.17
Rochelle Park Twp	245	56.3
Rocky Hill Boro	17	3.73
Roseland Boro	145	34.34
Roselle Boro	602	133.96
Roselle Park Boro	289	66.45
Runnemede Boro	552	119.83
Rutherford Boro	190	42.29
Saddle Brook Twp	12	2.55
Saddle Brook Twp	289	65.7
Saddle River Boro	4	0.96
Scotch Plains Twp	631	143.97
Secaucus Town	941	219.45
Somerdale Boro	370	80.16
Somerville Boro	648	142.08
South Bound Brook Boro	195	43.07
South Brunswick Twp	1394	304.51
South Brunswick Twp	474	102.03
South Hackensack Twp	200	46.5
South Orange Village Twp	96	22.68
South Plainfield Boro	2106	466.29
Southampton Twp	755	158.55
Springfield Twp Bur	416	87.12
Springfield Twp Uni	27	6.18

\*Latest installation date 9/10/21

\*Installs pending municipal data updates  
not included in total

**REDACTED**

<b>PSE&amp;G Pole-Attached -- Summary by Municipality -- August 2021</b>		
	<b>Total</b>	<b>Total kWdc</b>
Tavistock Boro	1	0.22
Teaneck Twp	701	161.45
Tenafly Boro	293	67.07
Teterboro Boro	144	33.75
Totowa Boro	689	157.63
Trenton City	4,463	973.81
Union City	0	0
Union City	24	5.57
Union Twp Uni	1885	418.73
Upper Freehold Twp	74	15.86
Verona Boro	174	41.53
Voorhees Twp	298	65.34
Waldwick Boro	155	34.77
Wallington Boro	262	61.17
Wallington Boro	5	1.17
Warren Twp	50	10.69
Washington Twp Ber	92	20.73
Washington Twp Glo	36	7.76
Washington Twp Mer	341	72.87
Watchung Boro	303	67.46
Wayne Twp	1234	282.69
Weehawken Twp	3	0.72
West Caldwell Twp	500	118.03
West Deptford Twp	1	0.2
West Deptford Twp	1623	349.81
West New York Town	30	6.8
West Orange Twp	1015	237.07
West Paterson Boro	287	66.16
West Windsor Twp	631	138.06
Westampton Twp	411	86.33
Westfield Town	1103	257.89
Westville Boro	495	105.38
Westwood Boro	211	46.75
Willingboro Twp	705	146.11
Winfield Twp	15	3.07
Woodbridge Twp	5517	1204.03
Woodbury City	864	188.47
Woodbury Heights Boro	264	57.33
Woodcliff Lake Boro	66	15.56
Woodlynne Boro	141	30
Wood-Ridge Boro	342	80
Wyckoff Twp	45	10
<b>Grand Totals:</b>	<b>166,948</b>	<b>36,970</b>

\*Latest installation date 9/10/21

\*Installs pending municipal data updates  
not included in total

**PSE&G Pole-Attached -- Count of Aggregators by Municipality -- August 2021**

<b>Municipality</b>	<b>Count of Aggregators Installed through August 2021</b>
Allentown Boro	3
Audubon Boro	7
Barrington Boro	7
Bayonne City	21
Belleville Twp	15
Bellmawr Boro	18
Bergenfield Boro	6
Beverly City	3
Bloomfield Twp	17
Bogota Boro	3
Bordentown City	1
Bordentown Twp	13
Bound Brook Boro	5
Branchburg Twp	1
Bridgewater Twp	45
Brooklawn Boro	6
Burlington City	17
Burlington Twp	18
Caldwell Boro	3
Camden City	62
Carlstadt Boro	13
Carteret Boro	19
Cedar Grove Twp	8
Cherry Hill Twp	64
Chesterfield Twp	16
Cinnaminson Twp	18
Clark Twp	13
Cliffside Park Boro	3
Clifton City	41
Collingswood Boro	10
Cranbury Twp	8
Cranford Twp	11
Delanco Twp	3
Delran Twp	12
Deptford Twp	32
Dumont Boro	6
Dunellen Boro	4
East Brunswick Twp	38
East Newark Boro	1
East Orange City	14
East Rutherford Boro	6
Eastampton Twp	8
Edgewater Boro	5
Edgewater Park Twp	6
Edison Twp	81
Elizabeth City	45
Elmwood Park Boro	12
Emerson Boro	7
Englewood City	17

\*Data available as of 9/10/2021

**PSE&G Pole-Attached -- Count of Aggregators by Municipality -- August 2021**

<b>Municipality</b>	<b>Count of Aggregators Installed through August 2021</b>
Englewood Cliffs Boro	5
Essex Fells Twp	2
Evesham Twp	15
Ewing Twp	35
Fair Lawn Boro	17
Fairfield Twp Ess	16
Fairview Boro	5
Fanwood Boro	5
Fieldsboro Boro	1
Florence Twp	12
Fort Lee Boro	12
Franklin Twp Som	67
Garfield City	8
Garwood Boro	3
Glen Rock Boro	7
Gloucester City	11
Gloucester Twp	21
Green Brook Twp	7
Guttenberg Town	1
Hackensack City	23
Haddon Heights Boro	4
Haddon Twp	13
Haddonfield Boro	10
Hainesport Twp	3
Haledon Boro	1
Hamilton Twp Mer	87
Harrison Town	4
Hasbrouck Heights	4
Haworth Boro	2
Hawthorne Boro	10
Highland Park Boro	7
Hillsborough Twp	39
Hillsdale Boro	2
Hillside Twp	9
Hi-Nella Boro	1
Hoboken City	7
Hohokus Boro	3
Hopewell Boro	3
Hopewell Twp Mer	27
Irvington Town	16
Jersey City	61
Kearny Town	14
Kenilworth Boro	7
Lawnside Boro	3
Lawrence Twp Mer	35
Leonia Boro	2
Linden City	35
Little Falls Twp	10
Little Ferry Boro	7

**PSE&G Pole-Attached -- Count of Aggregators by Municipality -- August 2021**

<b>Municipality</b>	<b>Count of Aggregators Installed through August 2021</b>
Livingston Twp	26
Lodi Boro	11
Lumberton Twp	12
Lyndhurst Twp	12
Magnolia Boro	5
Mansfield Twp Bur	15
Manville Boro	9
Maple Shade Twp	12
Maplewood Twp	7
Maywood Boro	7
Medford Lakes Boro	3
Medford Twp	24
Merchantville Boro	1
Metuchen Boro	11
Middlesex Boro	9
Midland Park Boro	6
Millstone Boro	1
Montclair Twp	16
Montgomery Twp	38
Moonachie Boro	5
Moorestown Twp	18
Mount Ephraim Boro	4
Mount Holly Twp	9
Mount Laurel Twp	27
Mountainside Boro	8
National Park Boro	6
New Brunswick City	25
New Milford Boro	6
Newark City	106
North Arlington Boro	8
North Bergen Twp	24
North Brunswick Twp	25
North Caldwell Twp	11
North Haledon Boro	3
North Plainfield Boro	7
Nutley Town	8
Oaklyn Boro	3
Old Tappan Boro	1
Oradell Boro	2
Orange City	9
Palisades Park Boro	5
Palmyra Boro	7
Paramus Boro	24
Passaic City	17
Paterson City	46
Pemberton Twp	6
Pennington Boro	3
Pennsauken Twp	50
Perth Amboy City	24

\*Data available as of 9/10/2021

**PSE&G Pole-Attached -- Count of Aggregators by Municipality -- August 2021**

<b>Municipality</b>	<b>Count of Aggregators Installed through August 2021</b>
Piscataway Twp	55
Plainfield City	26
Plainsboro Twp	10
Princeton Boro	9
Princeton Twp	15
Prospect Park Boro	1
Rahway City	17
Raritan Boro	6
Ridgefield Boro	5
Ridgefield Park Village	5
Ridgewood Village	9
River Edge Boro	7
River Vale Twp	1
Riverside Twp	3
Riverton Boro	3
Rochelle Park Twp	5
Rocky Hill Boro	4
Roseland Boro	10
Roselle Boro	10
Roselle Park Boro	5
Runnemede Boro	8
Rutherford Boro	8
Saddle Brook Twp	7
Saddle River Boro	1
Scotch Plains Twp	12
Secaucus Town	17
Somerdale Boro	6
Somerville Boro	8
South Bound Brook Boro	2
South Brunswick Twp	47
South Hackensack Twp	3
South Orange Village Twp	5
South Plainfield Boro	41
Southampton Twp	23
Springfield Twp Bur	13
Teaneck Twp	17
Tenafly Boro	11
Teterboro Boro	2
Totowa Boro	11
Trenton City	53
Undefined Municipality	2
Union City	2
Union Twp Uni	28
Upper Freehold Twp	2
Verona Boro	3
Voorhees Twp	7
Waldwick Boro	10
Wallington Boro	2
Warren Twp	5

\*Data available as of 9/10/2021

**PSE&G Pole-Attached -- Count of Aggregators by Municipality -- August 2021**

<b>Municipality</b>	<b>Count of Aggregators Installed through August 2021</b>
Washington Twp Ber	6
Washington Twp Glo	1
Washington Twp Mer	8
Watchung Boro	13
Wayne Twp	52
West Caldwell Twp	9
West Deptford Twp	29
West New York Town	3
West Orange Twp	27
West Paterson Boro	9
West Windsor Twp	22
Westampton Twp	9
Westfield Town	25
Westville Boro	4
Westwood Boro	5
Willingboro Twp	16
Woodbridge Twp	87
Woodbury City	13
Woodbury Heights Boro	1
Woodcliff Lake Boro	5
Woodlynne Boro	2
Wood-Ridge Boro	4
Wyckoff Twp	5
<b>Grand Totals:</b>	<b>3,130</b>