

**Solar 4 All Monthly Activity Report - October 2021**

| Site                   | Property Owner               | Cost per Project (\$k) | NPV of 20 Year Lease Cost (\$k) | EPC Contractor   | Site Location Address  |
|------------------------|------------------------------|------------------------|---------------------------------|------------------|--|
| <b>Segment 1a</b>      |                              |                        |                                 |                  |  |
| Linden                 | PSE&G                        |                        | N/A                             | ASP              | South Wood Avenue, Linden, NJ 07036                            |
| Yardville              | PSE&G                        |                        | N/A                             | ACE              | Broad Street, Hamilton, NJ 08611                               |
| Silver Lake            | PSE&G                        |                        | N/A                             | JFC              | 410 Silver Lake Avenue, Edison, NJ 08817                       |
| Trenton                | PSE&G                        |                        | N/A                             | SunEdison        | 500-520 Brunswick Avenue, Trenton, NJ 08638                    |
| Central HQ             | PSE&G                        |                        | N/A                             | Solis (Solyndra) | 472 Weston Canal Road, Franklin, NJ 08873                      |
| Edison Training        | PSE&G                        |                        | N/A                             | Henkle & McCoy   | 234 Pierson Avenue, Edison, NJ 08837                           |
| Thorofare              | PSE&G                        |                        | N/A                             | SunEdison        | Jessup Road, Thorofare, NJ 08086                               |
| Hackensack             | PSE&G                        |                        | N/A                             | JFC              | 194-210 South River Street, Hackensack NJ 07601                |
| Metro/Clifton          | PSE&G                        |                        | N/A                             | Gloria Solar     | 150 Circle Ave, Clifton, NJ 07011                              |
| S. DivHQ Moorestown    | PSE&G                        |                        | N/A                             | Vanguard         | 360 New Albany Road, Moorestown, NJ                            |
| <b>Segment 1b</b>      |                              |                        |                                 |                  |  |
| CPP Bayonne            | CenterPoint Properties       |                        | \$1,402                         | ASP              | 30-100 Pulaski Street, Bayonne, NJ 07002                       |
| Matrix - Stults Rd     | Matrix Development Group     |                        | \$2,228                         | Pro-Tech         | 45 Stults Rd, South Brunswick, NJ 08810                        |
| Rider                  | Rider University             |                        | \$642                           | Alteris          | 2083 Lawrenceville Road, Lawrenceville, NJ 08648               |
| NJMC / Kearny Landfill | NJ Meadowland Commission     |                        | \$2,561                         | Sundurance       | 932 Bellville Turnpike, Kearny, Hudson County NJ 07032         |
| Mill Creek             | Judith Tucci                 |                        | \$3,189                         | Juwi             | 600 Irick Road, Westampton, NJ 08060                           |
| Food Bank              | Community Food Bank of NJ    |                        | \$772                           | Mercury          | 31 Evans Terminal, Hillside, NJ 07250                          |
| Raritan Center         | Summit Associates Inc.       |                        | \$1,729                         | ASP              | 45 Fernwood Avenue and 110 Fieldcrest Avenue, Edison, NJ 08818 |
| BlackRock-Matrix       | Granite South Brunswick, LLC |                        | \$1,800                         | Pro-Tech         | 140 Docks Corner Road, South Brunswick, NJ 08810               |
| <b>Segment 1c</b>      |                              |                        |                                 |                  |  |
| Matrix Bldg A & B      | Matrix Development           |                        | \$2,191                         | enXco            | 1000 & 1050 Amboy Ave, Perth Amboy, NJ 08861                   |
| Barringer              | Newark Public Schools        |                        | \$635                           | Mercury          | 90 Parker St, Newark, NJ 07104                                 |
| Park                   | Newark Public Schools        |                        | \$482                           | Mercury          | 120 Manchester Place, Newark, NJ 07104-1704                    |
| Camden (NWK)           | Newark Public Schools        |                        | \$971                           | ALM              | 281 & 321 Camden Street Newark, New Jersey 07103               |
| New Central HS         | Newark Public Schools        |                        | \$495                           | LB Electric      | 246 18th Ave, Newark, NJ 07108                                 |
| <b>Segment 2</b>       |                              |                        |                                 |                  |  |
| Pole-Attached          | PSE&G                        |                        | N/A                             | Riggs-Distler    | Various  |

**Notes:**

"Cost per Project" corresponds to projects that have been placed in service.

"NPV of 20 Year Lease Cost" is derived using an annual discount rate of 5.07%

Regarding Segment 2 (Pole-attached): Riggs Distler is the installation contractor, not an EPC contractor

"Cost per Project" includes AFUDC

**Solar 4 All Monthly Activity Report - October 2021**

| Site                   | Owner location  | Type of customer  | Status of the installation | Capacity of Project (MW-DC) |
|------------------------|---|-------------------|----------------------------|-----------------------------|
| <b>Segment 1a</b>      |   |                   |                            |                             |
| Linden                 | 80 Park Plaza, Newark, NJ 07102                             | Utility           | Commercial Operation       | 3.20                        |
| Yardville              | 80 Park Plaza, Newark, NJ 07102                             | Utility           | Commercial Operation       | 4.30                        |
| Silver Lake            | 80 Park Plaza, Newark, NJ 07102                             | Utility           | Commercial Operation       | 2.02                        |
| Trenton                | 80 Park Plaza, Newark, NJ 07102                             | Utility           | Commercial Operation       | 1.26                        |
| Central HQ             | 80 Park Plaza, Newark, NJ 07102                             | Utility           | Commercial Operation       | 0.92                        |
| Edison Training        | 80 Park Plaza, Newark, NJ 07102                             | Utility           | Commercial Operation       | 0.71                        |
| Thorofare              | 80 Park Plaza, Newark, NJ 07102                             | Utility           | Commercial Operation       | 0.72                        |
| Hackensack             | 80 Park Plaza, Newark, NJ 07102                             | Utility           | Commercial Operation       | 1.05                        |
| Metro/Clifton          | 80 Park Plaza, Newark, NJ 07102                             | Utility           | Commercial Operation       | 0.73                        |
| S. DivHQ Moorestown    | 80 Park Plaza, Newark, NJ 07102                             | Utility           | Commercial Operation       | 1.07                        |
| <b>Segment 1b</b>      |   |                   |                            |                             |
| CPP Bayonne            | 1808 Swift Drive, Oak Brook, IL 60523-1501                  | Warehouse         | Commercial Operation       | 1.70                        |
| Matrix - Stults Rd     | Forsgate Drive CN 4000, Cranbury, NJ 08512                  | Warehouse         | Commercial Operation       | 2.98                        |
| Rider                  | 2083 Lawrenceville Road, Lawrenceville, NJ 08548            | University        | Commercial Operation       | 0.74                        |
| NJMC / Kearny Landfill | One DeKorte Park Plaza, Lyndhurst, NJ 07071                 | Landfill          | Commercial Operation       | 3.00                        |
| Mill Creek             | 4 St. Albans Place, Haworth, NJ 07641                       | Private Landowner | Commercial Operation       | 3.82                        |
| Food Bank              | 31 Evans Terminal Rd, Hillside, New Jersey 07250            | Warehouse         | Commercial Operation       | 1.07                        |
| Raritan Center         | Raritan Plaza I, Edison, NJ 08818                           | Warehouse         | Commercial Operation       | 2.22                        |
| BlackRock-Matrix       | BlackRock, 40 E. 52nd Street, New York, NY 10022            | Warehouse         | Commercial Operation       | 2.97                        |
| <b>Segment 1c</b>      |   |                   |                            |                             |
| Matrix Bldg A & B      | Forsgate Drive CN 4000, Cranbury, NJ 08512                  | Warehouse         | Commercial Operation       | 2.86                        |
| Barringer              | Newark Public Schools, 2 Cedar Street, Newark NJ 07102-3051 | Public Schools    | Commercial Operation       | 0.65                        |
| Park                   | Newark Public Schools, 2 Cedar Street, Newark NJ 07102-3051 | Public Schools    | Commercial Operation       | 0.51                        |
| Camden (NWK)           | Newark Public Schools, 2 Cedar Street, Newark NJ 07102-3051 | Public Schools    | Commercial Operation       | 0.91                        |
| New Central HS         | Newark Public Schools, 2 Cedar Street, Newark NJ 07102-3051 | Public Schools    | Commercial Operation       | 0.50                        |
| <b>Segment 2</b>       |   |                   |                            |                             |
| Pole-Attached          | 80 Park Plaza, Newark, NJ 07102                             | Utility           | Commercial Operation       | 36.94                       |

**Solar 4 All Monthly Activity Report - October 2021**

| Site                   | Equipment installed (Inverters; Panels)  |
|------------------------|--|
| <b>Segment 1a</b>      |  |
| Linden                 | Six Sunny Central SC500-HE-US inverters; 7,766 Suntech STP280-24/Vd, 3,718 STP275-24/Vd panels   |
| Yardville              | Eight Advanced Energy Solaron 3159500-0001A2 inverters, one Solaron 250 inverters; 5,640 Suntech STP270-24/VD, 4,368 STP275-24/VD, 1,512 STP280-24/VD panels   |
| Silver Lake            | Three SMA Sunny Central SC 500U, one SC 250U inverters; 3,514 Sharp ND-224UC1, 5,236 ND-U235F1   |
| Trenton                | Thirty nine SMA Core 1 inverters; 5,496 Yingli Solar YL230b-29b panels   |
| Central HQ             | 10 SMA Tripower 15kw inverters, 29 SMA Tripower 20kw Inverters; 4,180 Solyndra SL-001-182U, 648 Solar World SW240MONO panels                                   |
| Edison Training        | 7 50kw SMA Tripower inverters, 1 30kw SMA Inverter, 4 24kw SMA Inverter, 10 15kw SMA Inverter; 3,164 Gloria Solar GSM6-225D-E1 panels                          |
| Thorofare              | Sixteen Chint power system inverters; 2,618 SunTech STP275-24Vd panels   |
| Hackensack             | Two Advanced Energy Solaron-500kW, 4,472 MX Solar MX-60-235 panels   |
| Metro/Clifton          | Four Satcon Powergate Plus PVS-75, two PVS-135 inverters; 3,122 Gloria Solar GSM6-235D-E1 panels   |
| S. DivHQ Moorestown    | Three Advanced Energy PVP 260 Inverters; one PVP 100 and one PVP 50 Inverter. 4,563 MX60-235 panels  |
| <b>Segment 1b</b>      |  |
| CPP Bayonne            | 15 SolarEdge SE100KUS inverters and three SolarEdge SE33.3KUS inverters; 7,730 Trina Solar TSM-220PA05 panels  |
| Matrix - Stults Rd     | Five Solaron 3159500-1001AD inverters; 12,684 Kyocera K0235GX-LPB panels   |
| Rider                  | Two AEI inverters; 2,640 Suntech STP-280 panels  |
| NJMC / Kearny Landfill | Seven Advanced Energy Solaron inverters 2x500kW, 3x333kW, 2x250kW; 12,506 Kyocera KD240GX-LFB panels   |
| Mill Creek             | Seven SMA America SC500U inverters; 29,400 Solar Frontier SF-130-L panels  |
| Food Bank              | 121 ProHarvest HiQ Inverters; 4,667 Trina Solar TSM-230PA05 panels   |
| Raritan Center         | 235 ProHarvest HiQ inverters; 7,098 Hyundai HIS-M230SG, 2,604 HIS-M227SG panels  |
| BlackRock-Matrix       | Five AE Solaron 3159000-1001AJ inverters; 12,376 Upsolar UP-M240P panels   |
| <b>Segment 1c</b>      |  |
| Matrix Bldg A & B      | 300 ProHarvest HiQ inverters; 10,395 Suntech STP275-24VD panels  |
| Barringer              | 73 ProHarvest HiQ inverters; 2,310 Suntech STP280-24VB-1 panels  |
| Park                   | One Satcon PowerGate Plus PVS-375, 8 ProHarvest HiQ inverters; 1,440 Sunpower PL-SUN-SPR-305-U, 264 Suntech STP270-24/VB-1 panels                              |
| Camden (NWK)           | 101 ProHarvest HiQ Inverters; 3,264 ET Solar ET-P672280 panels   |
| New Central HS         | 58 ProHarvest HiQ inverters; 1,857 Suntech STP270-24/VB-1 panels   |
| <b>Segment 2</b>       |  |
| Pole-Attached          | Suntech STP200-18/UB-1, STP205-18/UD, STP210-18/UB-1, STP215-20/WD, STP220-20/WD, STP225-20/WD, Trina Solar TSM-220PA05, TSM-225PA05, TSM-235PA05, TSM-240PA05 |

**Solar 4 All Monthly Activity Report - September 2021**

**October 2021 Monthly Update**

| Segment              | Energy Produced (MWh AC) | Net Energy Sales (\$) | SREC's Sold   | SREC Revenue (\$)   | Capacity Sold (MW-days) | Net Capacity Sales (\$) | Business Interruption Insurance Recovery (\$) | Investment (\$)    | Program Expenses (\$) | Projects Completed / Seg 2 Panels Installed | MW Installed | Pole-attached Units Communicating |
|----------------------|--------------------------|-----------------------|---------------|---------------------|-------------------------|-------------------------|---|--------------------|-----------------------|---|--------------|-----------------------------------|
| Segment 1a           | 576                      | \$ 24,371             | 4,768         | \$ 1,122,895        | -                       | \$ -                    | \$0   | \$1,381,771        | \$167,423             | 0   | 0.0          |                                   |
| Segment 1b           | 1,205                    | \$ 51,368             | 6,469         | \$ 1,523,491        | -                       | \$ -                    | \$0   | \$213,524          | \$210,794             | 0   | 0.0          |                                   |
| Segment 1c           | 360                      | \$ 15,141             | 1,855         | \$ 436,864          | -                       | \$ -                    | \$0   | \$0                | \$92,791              | 0   | 0.0          |                                   |
| Segment 2            | 2,482                    | \$ 104,905            | 9,974         | \$ 2,348,941        | -                       | \$ -                    | \$0   | \$72,763           | \$438,631             | 42  | 0.010        | 157,293                           |
| <b>Program Total</b> | <b>4,623</b>             | <b>\$ 195,784</b>     | <b>23,066</b> | <b>\$ 5,432,192</b> | <b>-</b>                | <b>\$ -</b>             | <b>\$0</b>                                    | <b>\$1,668,058</b> | <b>\$909,639</b>      | <b>42</b>                                   | <b>0.010</b> |                                   |

**Solar 4 All Year-to-Date Activity Report**

**Year-to-Date Update through October 2021**

| Segment                  | Energy Produced (MWh AC) | Net Energy Sales (\$) | SREC's Sold   | SREC Revenue (\$)    | Capacity Sold (MW-days) | Net Capacity Sales (\$) | Business Interruption Insurance Recovery (\$) | Investment (\$)    | Program Expenses (\$) | Projects Completed / Seg 2 Panels Installed | MW Installed |
|--------------------------|--------------------------|-----------------------|---------------|----------------------|-------------------------|-------------------------|---|--------------------|-----------------------|---|--------------|
| Segment 1a               | 13,368                   | \$ 361,739            | 13,492        | \$ 3,159,568         | -                       | \$ -                    | \$0   | \$5,660,826        | \$1,125,918           | 0   | 0.0          |
| Segment 1b               | 18,491                   | \$ 604,486            | 17,263        | \$ 4,043,599         | -                       | \$ -                    | \$0   | \$2,554,268        | \$1,934,449           | 0   | 0.0          |
| Segment 1c               | 4,932                    | \$ 159,790            | 4,487         | \$ 1,051,687         | -                       | \$ -                    | \$0   | \$0                | \$648,200             | 0   | 0.0          |
| Segment 2                | 31,607                   | \$ 1,046,433          | 29,450        | \$ 6,895,359         | -                       | \$ -                    | \$0   | \$461,249          | \$4,435,779           | 0   | 0.000        |
| <b>YTD Program Total</b> | <b>68,398</b>            | <b>\$ 2,172,449</b>   | <b>64,692</b> | <b>\$ 15,150,213</b> | <b>-</b>                | <b>\$ -</b>             | <b>\$0</b>                                    | <b>\$8,676,343</b> | <b>\$8,144,347</b>    | <b>0</b>                                    | <b>0</b>     |

**Solar 4 All Program-to-Date Activity Report**

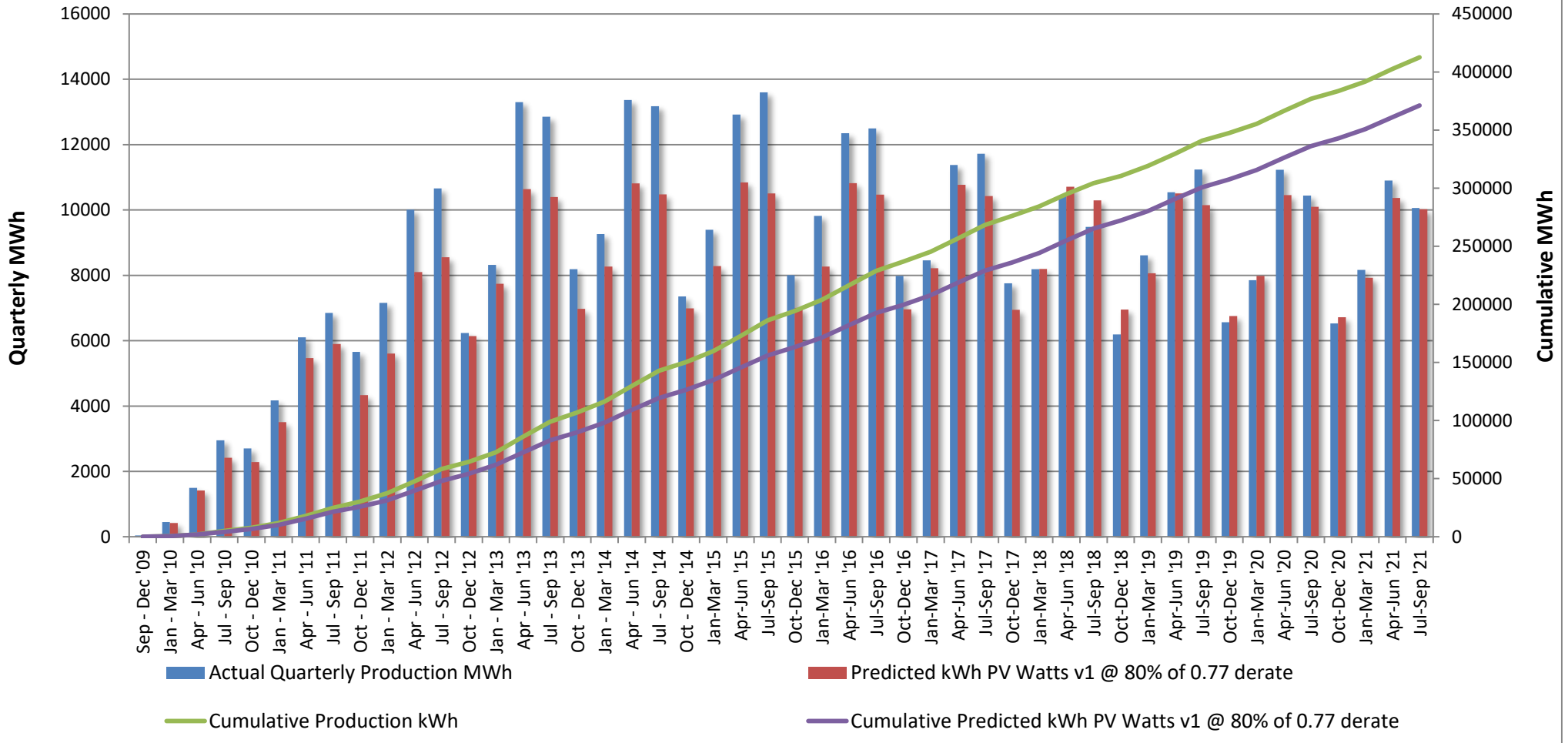
**Program-to-Date through October 2021**

| Segment                      | Energy Produced (MWh AC) | Net Energy Sales (\$) | SREC's Sold    | SREC Revenue (\$)    | Capacity Sold (MW-days) | Net Capacity Sales (\$) | Business Interruption Insurance Recovery (\$) | Investment (\$)      | Program Expenses (\$) | Projects Completed / Seg 2 Panels Installed | MW Installed |
|------------------------------|--------------------------|-----------------------|----------------|----------------------|-------------------------|-------------------------|---|----------------------|-----------------------|---|--------------|
| Segment 1a                   | 195,253                  | \$6,427,976           | 195,867        | \$42,868,134         | 15,316.7                | \$2,286,339             | \$320,277                                     | \$98,464,040         | \$8,813,021           | 10  | 16.0         |
| Segment 1b                   | 224,365                  | \$8,056,054           | 223,096        | \$46,762,317         | 16,886.7                | \$2,807,758             | \$457,127                                     | \$83,807,663         | \$22,432,340          | 8   | 18.5         |
| Segment 1c                   | 64,065                   | \$2,116,260           | 62,972         | \$13,707,141         | 5,958.6                 | \$812,967               | \$0   | \$35,916,068         | \$8,261,307           | 6   | 5.4          |
| Segment 2                    | 372,814                  | \$14,785,477          | 387,467        | \$85,638,980         | 33,520.0                | \$5,163,194             | \$0   | \$279,136,356        | \$37,217,342          | 166,768                                     | 36.9         |
| <b>Program-to-date Total</b> | <b>856,498</b>           | <b>\$31,385,768</b>   | <b>869,402</b> | <b>\$188,976,572</b> | <b>71,682.0</b>         | <b>\$11,070,259</b>     | <b>\$777,404</b>                              | <b>\$497,324,126</b> | <b>\$76,724,010</b>   | <b>166,792</b>                              | <b>76.9</b>  |

**Notes:**

- 1) "SREC's Sold" and "SREC Revenue" includes vintage year 2011 through 2021 SRECs
- 2) Monthly "Pole-attached Units Installed" & "Pole-attached MW Installed" are preliminary estimates and subject to change. Adjustments to prior months will be reflected in YTD values. Capacity specified in certain previously filed capacity reports represented gross installed capacity. The values shown in the table above account for net installed capacity (total installs minus total removals).
- 3) "Pole Attached Units Communicating" represents the *average, daily* number of panels that communicated during the month.
- 4) The columns "Energy Produced" and "SRECs Sold" do not sync because of the timing of SREC auctions, through which SRECs are sold.
- 5) Business interruption insurance recovery received for lost energy sales and SREC sales due to Superstorm Sandy

### PSE&G Pole-Attached Solar: Quarterly Performance vs. PV Watts @ 80% of 0.77



**Total S4A Fleet Performance:**

October weather conditions were not favorable for solar production. Actual monthly production compared to plan is -9.70%

**Seg2 (Pole Attached Solar):**

- Ongoing maintenance of existing installations continues.

**REDACTED**

| <b>PSE&amp;G Pole-Attached -- Summary by Municipality -- October 2021</b> |              |                   |
|---|--------------|-------------------|
|   | <b>Total</b> | <b>Total kWdc</b> |
| Allentown Boro  | 51           | 10.99             |
| Audubon Boro  | 475          | 101.59            |
| Audubon Park Boro   | 41           | 8.56              |
| Barrington Boro   | 337          | 73.12             |
| Bayonne City  | 1,578        | 359.86            |
| Belleville Twp  | 752          | 175.21            |
| Bellmawr Boro   | 934          | 201.45            |
| Bergenfield Boro  | 415          | 93.6              |
| Berkeley Heights Twp  | 5            | 1.2               |
| Beverly City  | 259          | 54.58             |
| Bloomfield Twp  | 983          | 232.33            |
| Bogota Boro   | 178          | 41.9              |
| Bordentown City   | 60           | 12.89             |
| Bordentown Twp  | 800          | 172.19            |
| Bound Brook Boro  | 372          | 85.16             |
| Branchburg Twp  | 22           | 5.28              |
| Bridgewater Twp   | 1,593        | 358.11            |
| Brooklawn Boro  | 217          | 45.81             |
| Burlington City   | 1,191        | 253.08            |
| Burlington Twp  | 1,168        | 244.89            |
| Caldwell Boro   | 189          | 44.66             |
| Camden City   | 5,141        | 1,122.21          |
| Carlstadt Boro  | 625          | 145.97            |
| Carteret Boro   | 1,498        | 322.8             |
| Cedar Grove Twp   | 499          | 117.22            |
| Cherry Hill Twp   | 2,910        | 623.44            |
| Chesterfield Twp  | 385          | 83                |
| Cinnaminson Twp   | 1,188        | 249.09            |
| Clark Twp   | 621          | 138.72            |
| Cliffside Park Boro   | 274          | 64.82             |
| Clifton City  | 2,994        | 697.72            |
| Collingswood Boro   | 654          | 140.82            |
| Cranbury Twp  | 258          | 56.55             |
| Cranford Twp  | 677          | 151.73            |
| Cresskill Boro  | 2            | 0.44              |
| Delanco Twp   | 290          | 60.21             |
| Delran Twp  | 595          | 125               |
| Deptford Twp  | 1,609        | 349.74            |
| Dumont Boro   | 423          | 94.73             |
| Dunellen Boro   | 273          | 61.59             |
| East Amwell Twp   | 2            | 0.41              |
| East Brunswick Twp  | 2,057        | 451.83            |
| East Newark Boro  | 23           | 5.12              |
| East Orange City  | 1,167        | 275.27            |
| East Rutherford Boro  | 407          | 95.31             |
| Eastampton Twp  | 287          | 59.79             |
| Edgewater Boro  | 106          | 24.72             |
| Edgewater Park Twp  | 501          | 103.37            |
| Edison Twp  | 4,434        | 970.58            |
| Elizabeth City  | 2,929        | 642.58            |
| Elizabeth City  | 249          | 55.49             |

\*Latest installation date 11/11/21

\*Installs pending municipal data updates  
not included in total

**REDACTED**

| <b>PSE&amp;G Pole-Attached -- Summary by Municipality -- October 2021</b> |              |                   |
|---|--------------|-------------------|
|   | <b>Total</b> | <b>Total kWdc</b> |
| Elmwood Park Boro   | 699          | 160.57            |
| Emerson Boro  | 259          | 57.86             |
| Englewood City  | 770          | 177.7             |
| Englewood Cliffs Boro   | 237          | 56.11             |
| Essex Fells Twp   | 59           | 13.86             |
| Evesham Twp   | 728          | 154.98            |
| Ewing Twp   | 2,321        | 499.85            |
| Fair Lawn Boro  | 1,026        | 228.85            |
| Fairfield Twp Ess   | 1015         | 237.12            |
| Fairview Boro   | 244          | 57                |
| Fanwood Boro  | 246          | 56.71             |
| Fieldsboro Boro   | 63           | 13.96             |
| Florence Twp  | 848          | 179.44            |
| Fort Lee Boro   | 619          | 145.99            |
| Franklin Twp Som  | 2672         | 579.99            |
| Franklin Twp Som  | 81           | 18.32             |
| Garfield City   | 572          | 133.32            |
| Garwood Boro  | 230          | 52.35             |
| Glen Ridge Boro   | 13           | 3.1               |
| Glen Rock Boro  | 129          | 29.03             |
| Gloucester City   | 742          | 159.52            |
| Gloucester Twp  | 1627         | 351.01            |
| Green Brook Twp   | 278          | 62.92             |
| Guttenberg Town   | 20           | 4.77              |
| Hackensack City   | 1307         | 303.06            |
| Haddon Heights Boro   | 339          | 74.89             |
| Haddon Twp  | 861          | 184.91            |
| Haddonfield Boro  | 151          | 33.97             |
| Hainesport Twp  | 455          | 97.48             |
| Haledon Boro  | 110          | 24.69             |
| Hamilton Twp Mer  | 6266         | 1350.66           |
| Harrison Town   | 241          | 54.63             |
| Hasbrouck Heights   | 353          | 82.63             |
| Haworth Boro  | 35           | 8.04              |
| Hawthorne Boro  | 421          | 93.26             |
| Highland Park Boro  | 460          | 102.42            |
| Hillsborough Twp  | 1531         | 336.99            |
| Hillsborough Twp  | 0            | 0                 |
| Hillsdale Boro  | 13           | 3.06              |
| Hillside Twp  | 584          | 128.82            |
| Hillside Twp  | 3            | 0.62              |
| Hi-Nella Boro   | 49           | 10.52             |
| Hoboken City  | 243          | 57.35             |
| Hohokus Boro  | 34           | 7.56              |
| Hopewell Boro   | 71           | 16.66             |
| Hopewell Twp Mer  | 465          | 102.62            |
| Irvington Town  | 1,009        | 225.11            |
| Jersey City   | 3623         | 824.15            |
| Kearny Town   | 0            | 0                 |
| Kearny Town   | 1145         | 257.18            |
| Kenilworth Boro   | 309          | 68.97             |

\*Latest installation date 11/11/21

\*Installs pending municipal data updates  
not included in total

Count of Panels by Municipality

\*Net of removals

Panel Report

Page 8 of 16



**REDACTED**

| <b>PSE&amp;G Pole-Attached -- Summary by Municipality -- October 2021</b> |              |                   |
|---|--------------|-------------------|
|   | <b>Total</b> | <b>Total kWdc</b> |
| Lawnside Boro   | 243          | 52.43             |
| Lawrence Twp Mer  | 1386         | 299.73            |
| Leonia Boro   | 177          | 41.4              |
| Lincoln Park Boro   | 5            | 1.17              |
| Linden City   | 2263         | 485.14            |
| Little Falls Twp  | 397          | 92.38             |
| Little Ferry Boro   | 428          | 98.95             |
| Livingston Twp  | 0            | 0                 |
| Livingston Twp  | 452          | 106.37            |
| Lodi Boro   | 618          | 143.47            |
| Lumberton Twp   | 423          | 88.47             |
| Lyndhurst Twp   | 833          | 195.13            |
| Magnolia Boro   | 372          | 83.19             |
| Mansfield Twp Bur   | 514          | 106.83            |
| Manville Boro   | 572          | 129.27            |
| Maple Shade Twp   | 1150         | 242.8             |
| Maplewood Twp   | 358          | 80.76             |
| Maywood Boro  | 199          | 46.93             |
| Medford Lakes Boro  | 28           | 5.9               |
| Medford Twp   | 550          | 114.9             |
| Merchantville Boro  | 187          | 40.18             |
| Metuchen Boro   | 528          | 117.12            |
| Middlesex Boro  | 884          | 198.28            |
| Midland Park Boro   | 75           | 17.71             |
| Millburn Twp  | 7            | 1.66              |
| Millstone Boro  | 36           | 7.9               |
| Milltown Boro   | 2            | 0.44              |
| Monroe Twp Mid  | 3            | 0.63              |
| Montclair Twp   | 676          | 161.14            |
| Montgomery Twp  | 19           | 4.25              |
| Montgomery Twp  | 706          | 155.54            |
| Moonachie Boro  | 349          | 79.52             |
| Moorestown Twp  | 1032         | 221.06            |
| Mount Ephraim Boro  | 333          | 70.9              |
| Mount Holly Twp   | 502          | 106.44            |
| Mount Laurel Twp  | 983          | 207.89            |
| Mountainside Boro   | 287          | 66.04             |
| National Park Boro  | 344          | 75.22             |
| New Brunswick City  | 1,551        | 334.60            |
| New Milford Boro  | 285          | 64.7              |
| Newark City   | 7,179        | 1609.28           |
| North Arlington Boro  | 491          | 113.45            |
| North Bergen Twp  | 1137         | 265.99            |
| North Brunswick Twp   | 1700         | 372.47            |
| North Caldwell Twp  | 184          | 42.51             |
| North Haledon Boro  | 47           | 10.82             |
| North Hanover Twp   | 0            | 0                 |
| North Plainfield Boro   | 533          | 120.07            |
| Nutley Town   | 527          | 124.14            |
| Oaklyn Boro   | 264          | 55.61             |
| Old Tappan Boro   | 7            | 1.68              |

\*Latest installation date 11/11/21

\*Installs pending municipal data updates  
not included in total

**REDACTED**

| <b>PSE&amp;G Pole-Attached -- Summary by Municipality -- October 2021</b> |              |                   |
|---|--------------|-------------------|
|   | <b>Total</b> | <b>Total kWdc</b> |
| Oradell Boro  | 92           | 20.42             |
| Orange City   | 520          | 123.48            |
| Palisades Park Boro   | 392          | 92.44             |
| Palmyra Boro  | 402          | 83.99             |
| Paramus Boro  | 671          | 152.03            |
| Park Ridge Boro   | 0            | 0                 |
| Passaic City  | 990          | 231.1             |
| Paterson City   | 3023         | 688.43            |
| Paulsboro Boro  | 6            | 1.24              |
| Pemberton Twp   | 86           | 17.98             |
| Pennington Boro   | 79           | 18.38             |
| Pennsauken Twp  | 3,160        | 665.22            |
| Perth Amboy City  | 1,399        | 304.86            |
| Piscataway Twp  | 2574         | 559.87            |
| Plainfield City   | 1529         | 341.64            |
| Plainsboro Twp  | 217          | 47.73             |
| Princeton Boro  | 44           | 10.02             |
| Princeton Twp   | 110          | 24.03             |
| Prospect Park Boro  | 105          | 23.58             |
| Rahway City   | 1336         | 301.27            |
| Raritan Boro  | 268          | 58.94             |
| Ridgefield Boro   | 330          | 77.1              |
| Ridgefield Park Village   | 373          | 88.2              |
| Ridgewood Village   | 129          | 29.18             |
| River Edge Boro   | 266          | 61                |
| River Vale Twp  | 10           | 2.2               |
| Riverside Twp   | 544          | 113.34            |
| Riverton Boro   | 107          | 23.17             |
| Rochelle Park Twp   | 245          | 56.3              |
| Rocky Hill Boro   | 17           | 3.73              |
| Roseland Boro   | 145          | 34.34             |
| Roselle Boro  | 602          | 133.96            |
| Roselle Park Boro   | 289          | 66.45             |
| Runnemede Boro  | 552          | 119.83            |
| Rutherford Boro   | 189          | 42.05             |
| Saddle Brook Twp  | 12           | 2.55              |
| Saddle Brook Twp  | 289          | 65.7              |
| Saddle River Boro   | 4            | 0.96              |
| Scotch Plains Twp   | 631          | 143.97            |
| Secaucus Town   | 939          | 218.98            |
| Somerdale Boro  | 370          | 80.16             |
| Somerville Boro   | 648          | 142.08            |
| South Bound Brook Boro  | 195          | 43.07             |
| South Brunswick Twp   | 1393         | 304.3             |
| South Brunswick Twp   | 474          | 102.03            |
| South Hackensack Twp  | 200          | 46.5              |
| South Orange Village Twp  | 96           | 22.68             |
| South Plainfield Boro   | 2106         | 466.34            |
| Southampton Twp   | 752          | 157.89            |
| Springfield Twp Bur   | 416          | 87.12             |
| Springfield Twp Uni   | 23           | 5.24              |

\*Latest installation date 11/11/21

\*Installs pending municipal data updates  
not included in total

**REDACTED**

| <b>PSE&amp;G Pole-Attached -- Summary by Municipality -- October 2021</b> |                |                   |
|---|----------------|-------------------|
|   | <b>Total</b>   | <b>Total kWdc</b> |
| Tavistock Boro  | 1              | 0.22              |
| Teaneck Twp   | 700            | 161.22            |
| Tenafly Boro  | 293            | 67.07             |
| Teterboro Boro  | 144            | 33.75             |
| Totowa Boro   | 689            | 157.63            |
| Trenton City  | 4,463          | 973.81            |
| Union City  | 0              | 0                 |
| Union City  | 24             | 5.57              |
| Union Twp Uni   | 1883           | 418.32            |
| Upper Freehold Twp  | 74             | 15.86             |
| Verona Boro   | 174            | 41.53             |
| Voorhees Twp  | 298            | 65.34             |
| Waldwick Boro   | 155            | 34.77             |
| Wallington Boro   | 262            | 61.17             |
| Wallington Boro   | 5              | 1.17              |
| Warren Twp  | 50             | 10.69             |
| Washington Twp Ber  | 92             | 20.73             |
| Washington Twp Glo  | 36             | 7.76              |
| Washington Twp Mer  | 341            | 72.87             |
| Watchung Boro   | 303            | 67.46             |
| Wayne Twp   | 1234           | 282.69            |
| Weehawken Twp   | 3              | 0.72              |
| West Caldwell Twp   | 498            | 117.56            |
| West Deptford Twp   | 1              | 0.2               |
| West Deptford Twp   | 1620           | 349.16            |
| West New York Town  | 30             | 6.8               |
| West Orange Twp   | 1027           | 239.58            |
| West Paterson Boro  | 287            | 66.16             |
| West Windsor Twp  | 631            | 138.06            |
| Westampton Twp  | 411            | 86.33             |
| Westfield Town  | 1102           | 257.65            |
| Westville Boro  | 495            | 105.38            |
| Westwood Boro   | 211            | 46.75             |
| Willingboro Twp   | 702            | 145.51            |
| Winfield Twp  | 15             | 3.07              |
| Woodbridge Twp  | 5519           | 1204.57           |
| Woodbury City   | 864            | 188.47            |
| Woodbury Heights Boro   | 264            | 57.33             |
| Woodcliff Lake Boro   | 66             | 15.56             |
| Woodlynne Boro  | 141            | 30                |
| Wood-Ridge Boro   | 342            | 80                |
| Wyckoff Twp   | 45             | 10                |
| <b>Grand Totals:</b>  | <b>166,944</b> | <b>36,970</b>     |

\*Latest installation date 11/11/21

\*Installs pending municipal data updates not included in total

**PSE&G Pole-Attached -- Count of Aggregators by Municipality -- October 2021**

| <b>Municipality</b>  | <b>Count of Aggregators Installed through August 2021</b> |
|----------------------|---|
| Allentown Boro       | 3   |
| Audubon Boro         | 7   |
| Barrington Boro      | 7   |
| Bayonne City         | 21  |
| Belleville Twp       | 15  |
| Bellmawr Boro        | 18  |
| Bergenfield Boro     | 6   |
| Beverly City         | 3   |
| Bloomfield Twp       | 17  |
| Bogota Boro          | 3   |
| Bordentown City      | 1   |
| Bordentown Twp       | 13  |
| Bound Brook Boro     | 5   |
| Branchburg Twp       | 1   |
| Bridgewater Twp      | 45  |
| Brooklawn Boro       | 6   |
| Burlington City      | 17  |
| Burlington Twp       | 18  |
| Caldwell Boro        | 3   |
| Camden City          | 62  |
| Carlstadt Boro       | 13  |
| Carteret Boro        | 19  |
| Cedar Grove Twp      | 8   |
| Cherry Hill Twp      | 65  |
| Chesterfield Twp     | 16  |
| Cinnaminson Twp      | 17  |
| Clark Twp            | 13  |
| Cliffside Park Boro  | 3   |
| Clifton City         | 41  |
| Collingswood Boro    | 10  |
| Cranbury Twp         | 7   |
| Cranford Twp         | 11  |
| Delanco Twp          | 3   |
| Delran Twp           | 12  |
| Deptford Twp         | 32  |
| Dumont Boro          | 6   |
| Dunellen Boro        | 4   |
| East Brunswick Twp   | 38  |
| East Newark Boro     | 1   |
| East Orange City     | 14  |
| East Rutherford Boro | 6   |
| Eastampton Twp       | 8   |
| Edgewater Boro       | 5   |
| Edgewater Park Twp   | 6   |
| Edison Twp           | 81  |
| Elizabeth City       | 45  |
| Elmwood Park Boro    | 12  |
| Emerson Boro         | 7   |
| Englewood City       | 17  |

**PSE&G Pole-Attached -- Count of Aggregators by Municipality -- October 2021**

| <b>Municipality</b>   | <b>Count of Aggregators Installed through August 2021</b> |
|-----------------------|---|
| Englewood Cliffs Boro | 5   |
| Essex Fells Twp       | 2   |
| Evesham Twp           | 15  |
| Ewing Twp             | 35  |
| Fair Lawn Boro        | 17  |
| Fairfield Twp Ess     | 16  |
| Fairview Boro         | 5   |
| Fanwood Boro          | 5   |
| Fieldsboro Boro       | 1   |
| Florence Twp          | 12  |
| Fort Lee Boro         | 12  |
| Franklin Twp Som      | 67  |
| Garfield City         | 8   |
| Garwood Boro          | 3   |
| Glen Rock Boro        | 7   |
| Gloucester City       | 11  |
| Gloucester Twp        | 21  |
| Green Brook Twp       | 7   |
| Guttenberg Town       | 1   |
| Hackensack City       | 23  |
| Haddon Heights Boro   | 4   |
| Haddon Twp            | 13  |
| Haddonfield Boro      | 10  |
| Hainesport Twp        | 3   |
| Haledon Boro          | 1   |
| Hamilton Twp Mer      | 87  |
| Harrison Town         | 4   |
| Hasbrouck Heights     | 4   |
| Haworth Boro          | 2   |
| Hawthorne Boro        | 10  |
| Highland Park Boro    | 7   |
| Hillsborough Twp      | 39  |
| Hillsdale Boro        | 2   |
| Hillside Twp          | 9   |
| Hi-Nella Boro         | 1   |
| Hoboken City          | 7   |
| Hohokus Boro          | 3   |
| Hopewell Boro         | 4   |
| Hopewell Twp Mer      | 27  |
| Irvington Town        | 16  |
| Jersey City           | 60  |
| Kearny Town           | 14  |
| Kenilworth Boro       | 7   |
| Lawnside Boro         | 3   |
| Lawrence Twp Mer      | 35  |
| Leonia Boro           | 2   |
| Linden City           | 35  |
| Little Falls Twp      | 10  |
| Little Ferry Boro     | 7   |

**PSE&G Pole-Attached -- Count of Aggregators by Municipality -- October 2021**

| <b>Municipality</b>   | <b>Count of Aggregators Installed through August 2021</b> |
|-----------------------|---|
| Livingston Twp        | 26  |
| Lodi Boro             | 11  |
| Lumberton Twp         | 12  |
| Lyndhurst Twp         | 12  |
| Magnolia Boro         | 5   |
| Mansfield Twp Bur     | 15  |
| Manville Boro         | 9   |
| Maple Shade Twp       | 12  |
| Maplewood Twp         | 7   |
| Maywood Boro          | 7   |
| Medford Lakes Boro    | 3   |
| Medford Twp           | 24  |
| Merchantville Boro    | 1   |
| Metuchen Boro         | 11  |
| Middlesex Boro        | 9   |
| Midland Park Boro     | 6   |
| Millstone Boro        | 1   |
| Montclair Twp         | 16  |
| Montgomery Twp        | 37  |
| Moonachie Boro        | 5   |
| Moorestown Twp        | 18  |
| Mount Ephraim Boro    | 4   |
| Mount Holly Twp       | 9   |
| Mount Laurel Twp      | 27  |
| Mountainside Boro     | 8   |
| National Park Boro    | 6   |
| New Brunswick City    | 25  |
| New Milford Boro      | 6   |
| Newark City           | 106   |
| North Arlington Boro  | 8   |
| North Bergen Twp      | 24  |
| North Brunswick Twp   | 25  |
| North Caldwell Twp    | 11  |
| North Haledon Boro    | 3   |
| North Plainfield Boro | 7   |
| Nutley Town           | 8   |
| Oaklyn Boro           | 3   |
| Old Tappan Boro       | 1   |
| Oradell Boro          | 2   |
| Orange City           | 9   |
| Palisades Park Boro   | 5   |
| Palmyra Boro          | 7   |
| Paramus Boro          | 24  |
| Passaic City          | 17  |
| Paterson City         | 46  |
| Pemberton Twp         | 6   |
| Pennington Boro       | 3   |
| Pennsauken Twp        | 50  |
| Perth Amboy City      | 24  |

\*Data available as of 11/11/2021

**PSE&G Pole-Attached -- Count of Aggregators by Municipality -- October 2021**

| <b>Municipality</b>      | <b>Count of Aggregators Installed through August 2021</b> |
|--------------------------|---|
| Piscataway Twp           | 55  |
| Plainfield City          | 26  |
| Plainsboro Twp           | 10  |
| Princeton Boro           | 9   |
| Princeton Twp            | 15  |
| Prospect Park Boro       | 1   |
| Rahway City              | 17  |
| Raritan Boro             | 6   |
| Ridgefield Boro          | 5   |
| Ridgefield Park Village  | 5   |
| Ridgewood Village        | 9   |
| River Edge Boro          | 7   |
| River Vale Twp           | 1   |
| Riverside Twp            | 3   |
| Riverton Boro            | 3   |
| Rochelle Park Twp        | 5   |
| Rocky Hill Boro          | 4   |
| Roseland Boro            | 10  |
| Roselle Boro             | 10  |
| Roselle Park Boro        | 5   |
| Runnemede Boro           | 8   |
| Rutherford Boro          | 8   |
| Saddle Brook Twp         | 7   |
| Saddle River Boro        | 1   |
| Scotch Plains Twp        | 12  |
| Secaucus Town            | 17  |
| Somerdale Boro           | 6   |
| Somerville Boro          | 8   |
| South Bound Brook Boro   | 2   |
| South Brunswick Twp      | 47  |
| South Hackensack Twp     | 3   |
| South Orange Village Twp | 5   |
| South Plainfield Boro    | 41  |
| Southampton Twp          | 23  |
| Springfield Twp Bur      | 13  |
| Teaneck Twp              | 17  |
| Tenafly Boro             | 11  |
| Teterboro Boro           | 2   |
| Totowa Boro              | 11  |
| Trenton City             | 53  |
| Undefined Municipality   | 2   |
| Union City               | 2   |
| Union Twp Uni            | 28  |
| Upper Freehold Twp       | 2   |
| Verona Boro              | 3   |
| Voorhees Twp             | 7   |
| Waldwick Boro            | 10  |
| Wallington Boro          | 2   |
| Warren Twp               | 5   |

**PSE&G Pole-Attached -- Count of Aggregators by Municipality -- October 2021**

| <b>Municipality</b>   | <b>Count of Aggregators Installed through August 2021</b> |
|-----------------------|---|
| Washington Twp Ber    | 6   |
| Washington Twp Glo    | 1   |
| Washington Twp Mer    | 8   |
| Watchung Boro         | 13  |
| Wayne Twp             | 52  |
| West Caldwell Twp     | 9   |
| West Deptford Twp     | 29  |
| West New York Town    | 3   |
| West Orange Twp       | 27  |
| West Paterson Boro    | 9   |
| West Windsor Twp      | 22  |
| Westampton Twp        | 9   |
| Westfield Town        | 25  |
| Westville Boro        | 4   |
| Westwood Boro         | 5   |
| Willingboro Twp       | 16  |
| Woodbridge Twp        | 87  |
| Woodbury City         | 13  |
| Woodbury Heights Boro | 1   |
| Woodcliff Lake Boro   | 5   |
| Woodlynne Boro        | 2   |
| Wood-Ridge Boro       | 4   |
| Wyckoff Twp           | 5   |
| <b>Grand Totals:</b>  | <b>3,128</b>  |