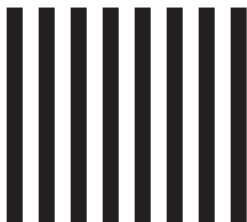


NO POSTAGE
NECESSARY
IF MAILED
IN THE
UNITED STATES



BUSINESS REPLY MAIL

FIRST-CLASS MAIL PERMIT NO. 233 MARLTON, NJ

POSTAGE WILL BE PAID BY ADDRESSEE

New Jersey Comfort Partners
c/o Honeywell
5 East Stow Road, Suite E
Marlton NJ 08053-9812



TEAR AT PERFORATION BEFORE MAILING



**WORKING TOGETHER
TO SAVE YOU ENERGY AND MONEY**

STATEWIDE ASSISTANCE PHONE NUMBERS:

First Call for Help in New Jersey
211

Statewide Low Income Home Energy
Assistance Program (LIHEAP)
800-510-3102

Lifeline Program and
Pharmaceutical Assistance to the
Aged and Disabled (PAAD)
800-792-9745

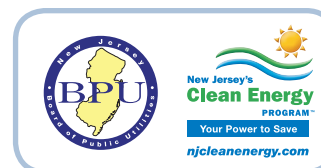
New Jersey Shares
866-657-4273

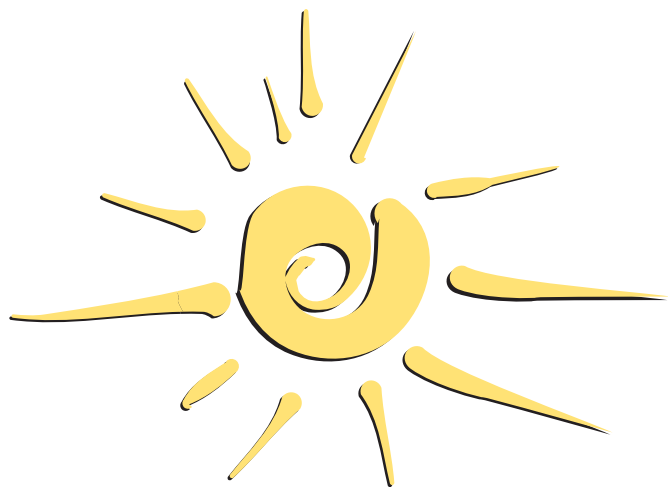
Universal Service Fund (USF)
866-240-1347



888-773-8326

**Working together
to save you energy
and money**





WHAT IS THE NEW JERSEY COMFORT PARTNERS PROGRAM?

The New Jersey Board of Public Utilities and your electric and gas utilities have joined together under *New Jersey's Clean Energy Program™* to partner with you and your family to save energy and money by making your home more energy efficient.

OUR COMMITMENT TO HELP YOU REDUCE ENERGY USE

Program representatives will work with you personally, in your house or apartment, to evaluate the current level of energy efficiency in your home. They'll review many factors that affect your energy use – including home heating and cooling, water heating, lighting and major appliances. They'll teach you and your family members new ways to conserve energy and help you create an action plan to support your efforts.

In most cases, program representatives will install energy-saving home improvements to lower your energy costs and improve your health, safety, and comfort. Such improvements may include measures such as added insulation, caulking, weatherstripping, energy-saving showerheads and light bulbs – all at no cost to you. All work is guaranteed for one year.

YOUR COMMITMENT TO REDUCE YOUR ENERGY USE

When you sign an agreement to participate in New Jersey Comfort Partners, you truly become a partner in managing your energy consumption. Together with your Comfort Partners program representative, you and your family will make and carry out an action plan to help save energy. Everyone in your household has a role to play in lowering your family's energy costs while increasing comfort, health and safety.

WHO IS ELIGIBLE TO PARTICIPATE?

To participate in New Jersey Comfort Partners, you must live in New Jersey and be at or below 225% of the Federal Poverty Guidelines, or participate in one of the Federal/Safety Net Partnership programs listed below:

- Home Energy Assistance Program (HEAP)
- Lifeline
- Pharmaceutical Assistance to the Aged and Disabled (PAAD)
- Section 8 Housing
- Federal Supplemental Security Income (SSI)
- Temporary Assistance to Needy Families (TANF)
- Universal Service Fund (USF)

New Jersey Comfort Partners has the right to verify income. Homes that are 0 – 5 years old or under builder's warranty are excluded.

YOU MUST ALSO:

- Be a customer of record with a separately metered electric or gas account and using this home as your primary residence.
- Live in a building with 1 – 14 units that are individually metered (apartment, townhouse etc). Buildings with more than 14 units are not eligible.

Participation will be prioritized by energy use with the highest energy users being served first.

Please send me more information and an application for participation in NEW JERSEY COMFORT PARTNERS:

Name: _____

Address: _____

City: _____

State: **NJ** Zip: _____

Phone/day: _____

Phone/evening: _____

Email: _____

My utility companies are [Check all that apply]

Electric Company:

- Atlantic City Electric
- Jersey Central Power & Light
- PSE&G

Gas Company:

- Elizabethtown Gas
- New Jersey Natural Gas
- PSE&G
- South Jersey Gas

TEAR AT PERFORATION BEFORE MAILING

For more information or to receive a Comfort Partners Program application, fill out and mail the attached form, or call the program toll-free number: **888-773-8326**.

You can also access program information on our website at NJCleanEnergy.com/CP.