

BENEFITS OF DIRECT INSTALL

Owners of small to mid-sized buildings in New Jersey have so much to gain:

The program is completely turnkey!

A Participating Contractor from our network will address the project from start to finish, beginning with an assessment of your facility, and ending with the installation of eligible energy-efficient equipment.

Costs to you are minimal!

Your share of the project's cost will be approximately 20%, New Jersey's Clean Energy Program pays the remaining 80%. With incentives so dramatic, your payback can be less than two years.

Turnaround time is quick!

Project installations are typically completed within 60 days from the time of scheduling your Energy Assessment.

Cost savings are long-term!

Your new energy-efficient equipment will provide savings for years to come through reduced energy costs.

For additional information, visit
NJCleanEnergy.com/ssb
or call 866-NJSMART.



New Jersey's Clean Energy Program is a statewide program administered by the New Jersey Board of Public Utilities that promotes energy efficiency and renewable energy for all New Jersey ratepayers, including residences, businesses, schools and municipalities.

SIX SIMPLE STEPS TO PARTICIPATE

CONTACT US

Visit the website or give us a call at 866-NJSMART and, if your building meets eligibility requirements, we'll refer you to the Participating Contractor serving your region. Your contractor will schedule an Energy Assessment and work with you to complete the Program Application and Participation Agreement form.

REVIEW RESULTS

After the Energy Assessment, the contractor will review results with you, including what measures qualify and your share of the project cost.

DECIDE TO MOVE FORWARD

You will sign a Scope of Work document to proceed with implementation of qualifying measures.

ARRANGE INSTALLATION

You and the Participating Contractor will set a convenient start date for the installation.

CONFIRM INSTALLATION

Once the Participating Contractor completes the installation, you accept the work by signing a Project Completion Form. A program representative will approve the project as complete.

COMPLETE TRANSACTION

You pay the Participating Contractor your share of the project cost and the program pays its share.



DIRECT INSTALL

FOR SMALL TO MID-SIZED COMMERCIAL BUILDINGS



DIRECT INSTALL

ENERGY EFFICIENCY REDUCES OPERATING COSTS

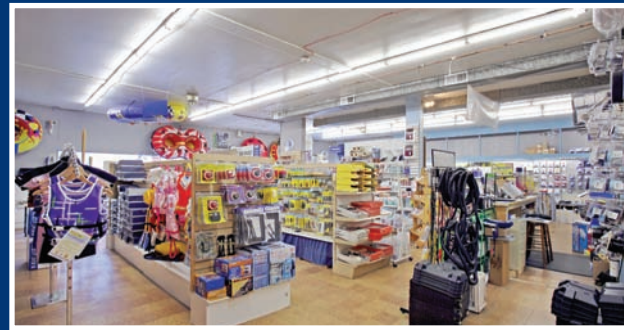
Replacing older, inefficient equipment with more efficient alternatives throughout your building is one of the most effective ways to control your operating costs for the long term. Upgrades to lighting, heating and cooling, and other systems can make a dramatic difference in your utility bills.

Direct Install gives you the means to make energy-efficient upgrades by paying for up to 80% of the total installed cost. That's right. **You pay approximately 20% of the project's cost, but you reap 100% of the benefit.** You pay the Participating Contractor your share of the project cost and the program pays its share.



PROGRAM OVERVIEW

Sometimes, the biggest challenge to improving energy efficiency is knowing where to start and how to get through the process. Direct Install is a turnkey program relying on a network of selected Participating Contractors who follow a seamless process. Your contractor will perform an Energy Assessment of your facility, identify cost-effective energy efficiency measures eligible for incentives under the program and complete the installation.



SYSTEMS & EQUIPMENT ADDRESSED BY THE PROGRAM

- Lighting
- Heating, Cooling & Ventilation (HVAC)
- Refrigeration
- Motors
- Natural Gas
- Variable Frequency Drives

ELIGIBILITY

Existing small to mid-sized commercial and industrial facilities with a peak electric demand that did not exceed 200 kW in any of the preceding 12 months are eligible to participate in Direct Install. Buildings must be located in New Jersey and served by one of the state's public, regulated electric or natural gas utility companies.

GETTING STARTED

To connect with the Participating Contractor in your region, contact us at 866-NJSMART or visit NJCleanEnergy.com/ssb for more details. The sooner you call, the sooner you'll start saving on your energy bills.

