



Monthly Report of Progress Toward Goals

November 2011

Table of Contents

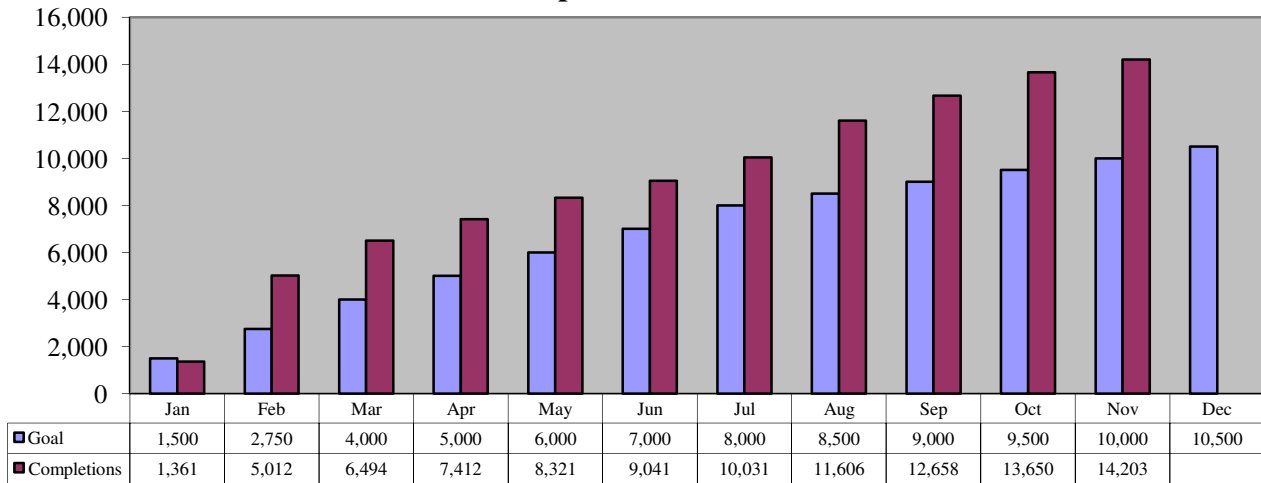
<i>Progress Toward Goals by Program</i>	2
Residential HVAC	2
Residential New Construction	3
Energy Efficient Products	4
Home Performance with Energy Star	7
Comfort Partners	9
C&I New Construction	10
C&I Retrofit	11
Local Government Energy Audit	12
Pay for Performance	13
Pay for Performance New Construction	14
Direct Install	15
Large Energy Users Pilot	16
REIP	17
SRP	18
CORE	20
<i>Summary Financials - Expenses vs. Budgets</i>	21
Statewide Total – All Programs and Administration	21
Energy Efficiency Programs	22
Renewable Energy Programs	23
EDA Programs	24
Office of Clean Energy	25
TRUE Grant	26
<i>Available Funding Report</i>	27
<i>Notes and Definitions</i>	28

Progress Toward Goals by Program

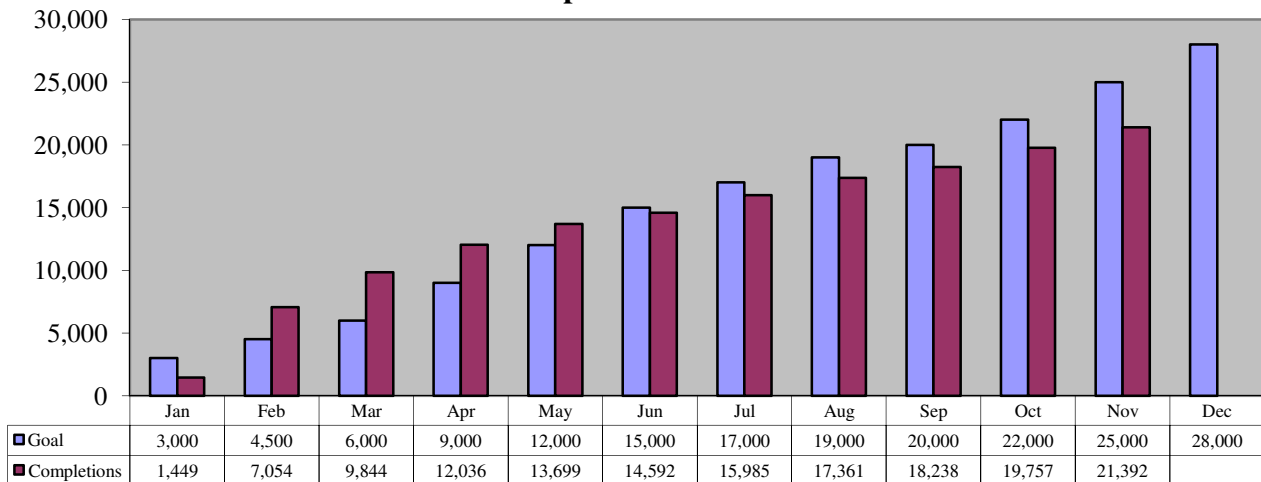
Residential HVAC - Electric and Gas

Annual Budget	Expenditures YTD	Expenditures as % of Annual Budget
\$22,724,584	\$16,777,518	73.83%

**HVAC COOLAdvantage: Statewide Results
Completions YTD**



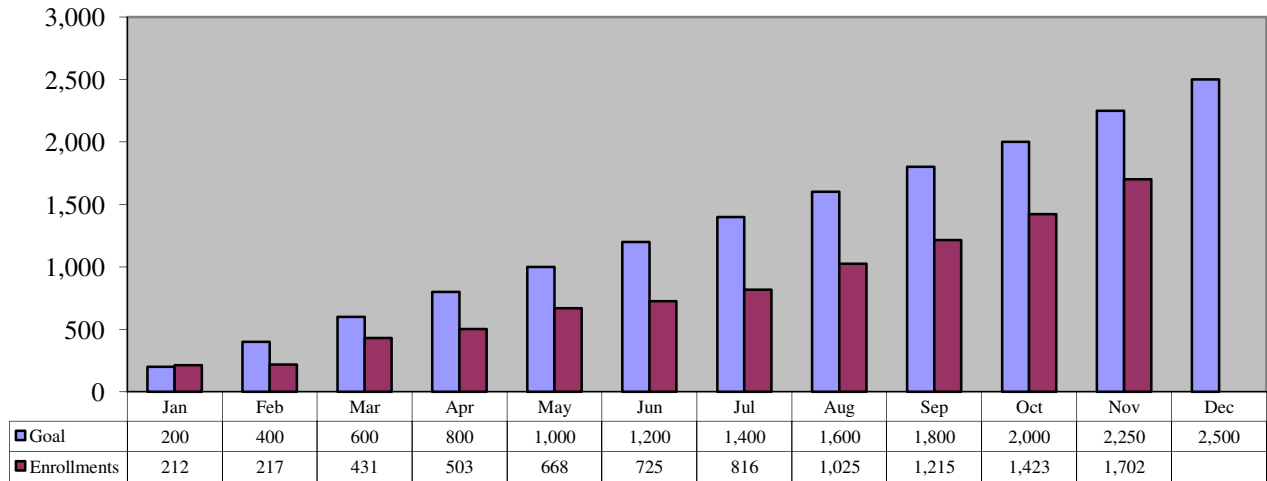
**HVAC WARMAdvantage: Statewide Results
Completions YTD**



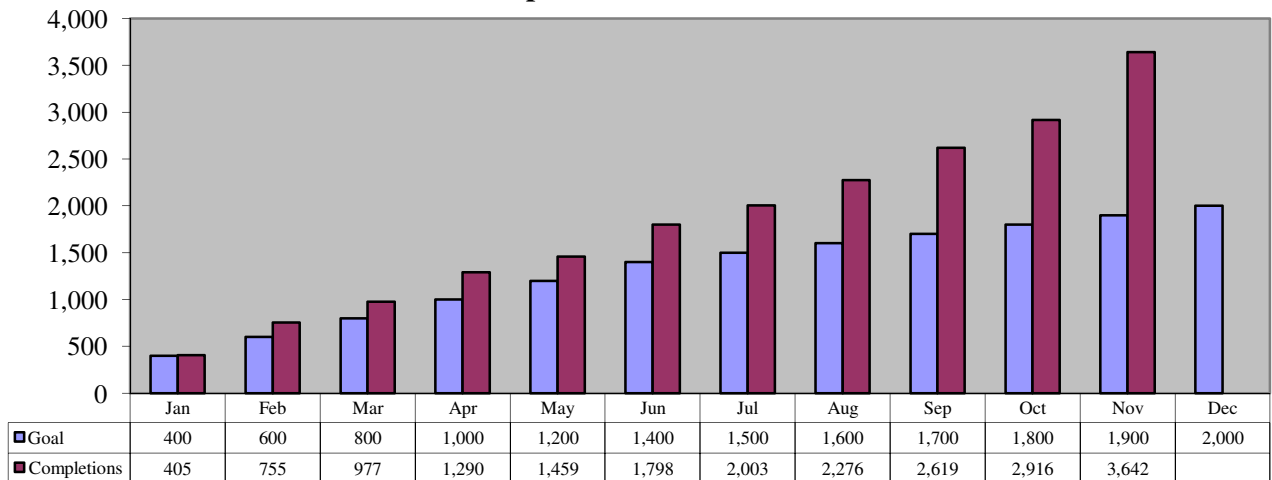
Residential New Construction

Annual Budget	Expenditures YTD	Outstanding Commitments	Expenditures as % of Annual Budget	Expenditures and Committed as % of Annual Budget
\$19,943,970	\$5,628,240	\$8,187,323	28.22%	69.27%

**Residential New Construction: Statewide Results
Program Enrollments YTD**



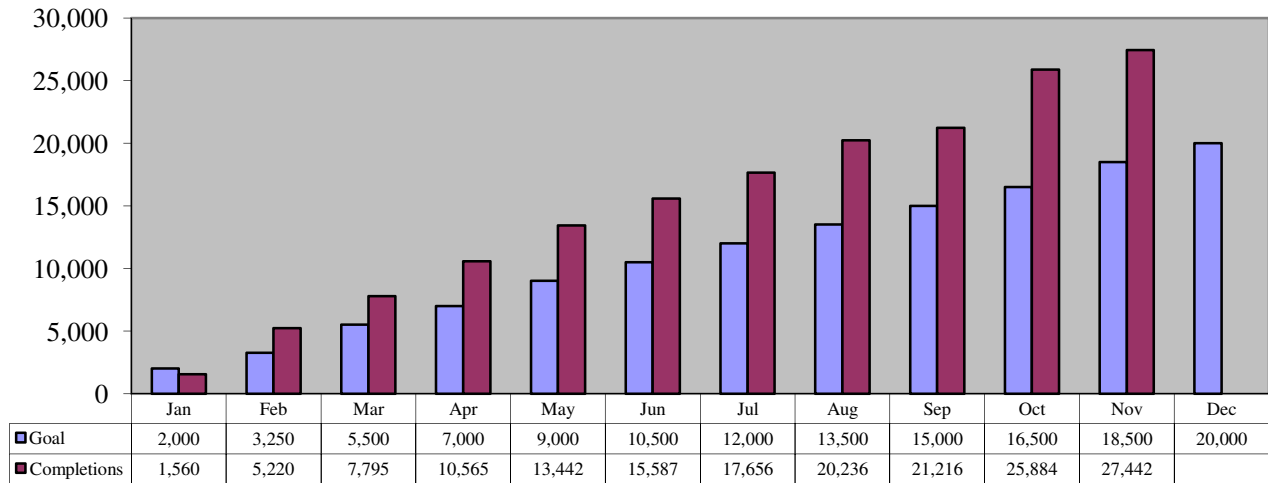
**Residential New Construction: Statewide Results
Completed Jobs YTD**



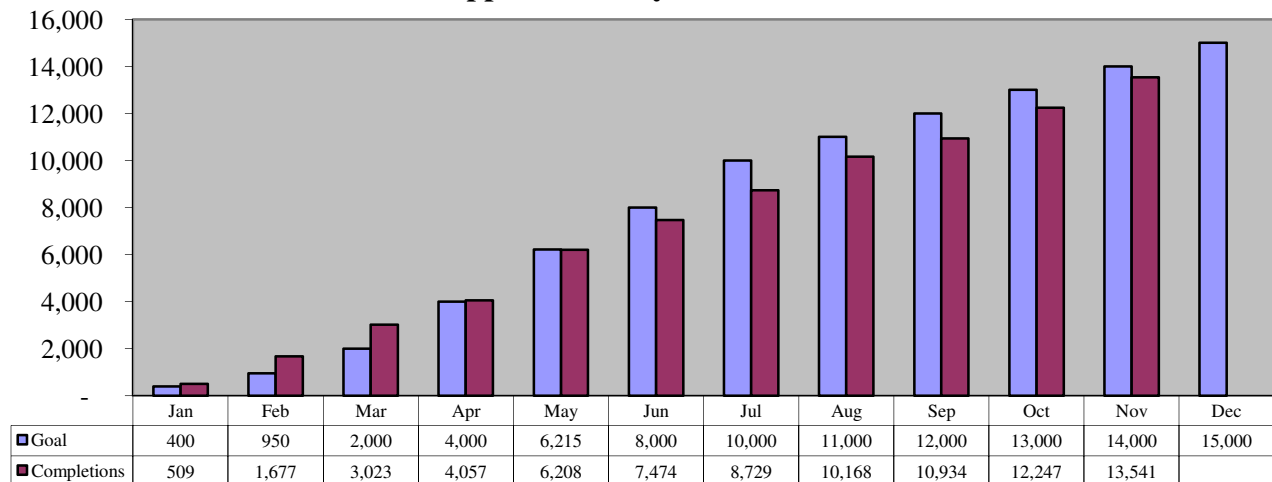
Energy Efficient Products

Annual Budget	Expenditures YTD	Expenditures as % of Annual Budget
\$18,193,381	\$11,806,576	64.89%

**Energy Efficient Products, Washer: Statewide Results
Washers Rebated YTD**

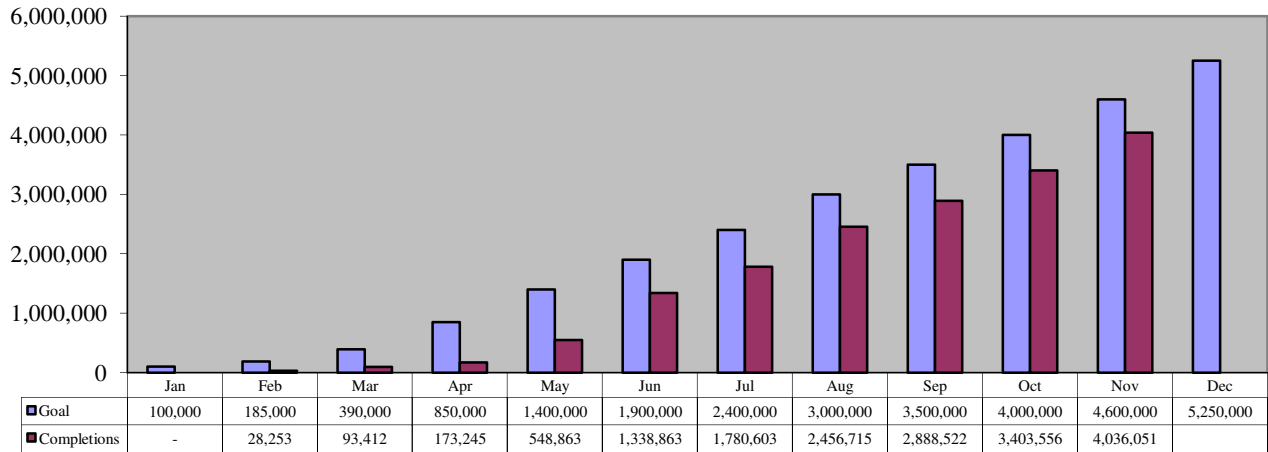


**Energy Efficient Products, Large Appliance Recycling: Statewide Results
Appliances Recycled YTD**

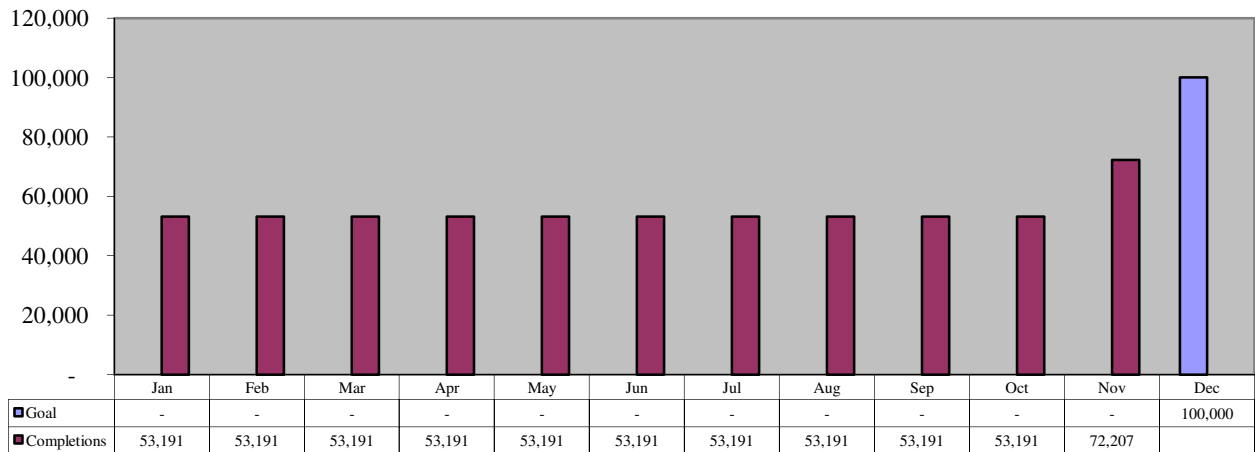


Energy Efficient Products

**Energy Efficient Products, CFL's: Statewide Results
CFL's Distributed YTD**



**Energy Efficient Products, Consumer Electronics: Statewide Results
Consumer Electronics Rebated YTD**



Energy Efficient Products

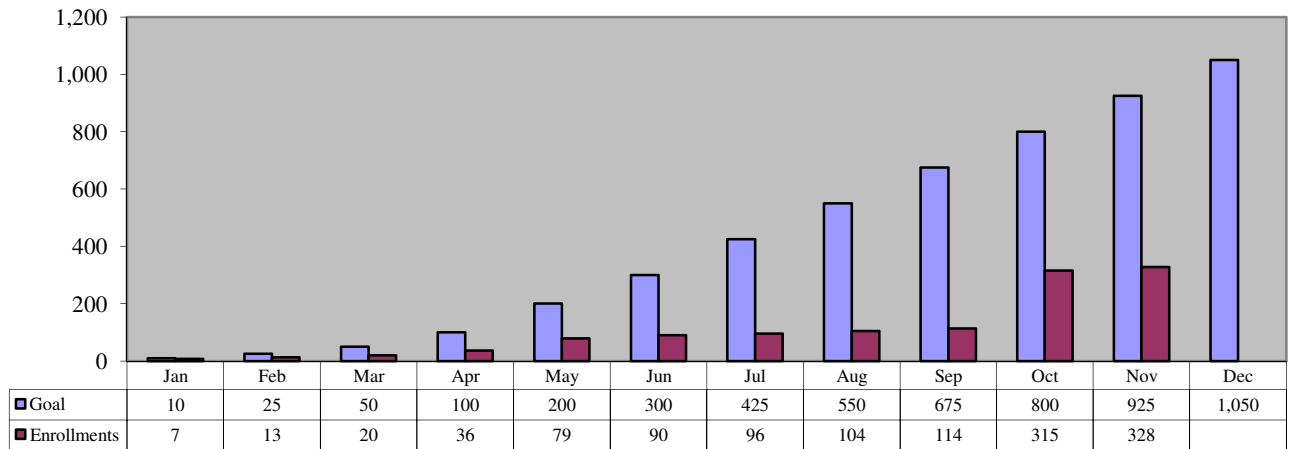
Green New Jersey Resource Team Progress Report			
Partner	Distribution Target	Amount Distributed	Progress
Project Porchlight	246,000	211,643	86%
TechniArt	166,178	153,186	92%

The numbers above represent GNJRT activity through December 7, 2011.

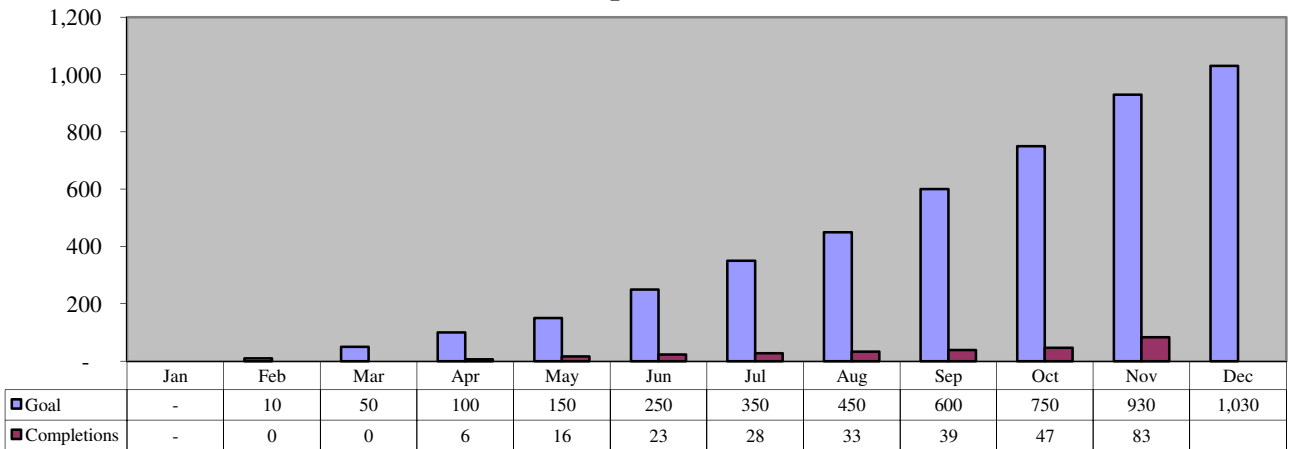
Home Performance with ENERGY STAR

Annual Budget	Expenditures YTD	Outstanding Commitments	Expenditures as % of Annual Budget	Expenditures and Committed as % of Annual Budget
\$29,760,156	\$11,470,757	\$4,693,206	38.54%	54.31%

**Home Performance with Energy Star: Statewide Results
Tier 2 Enrollments YTD**

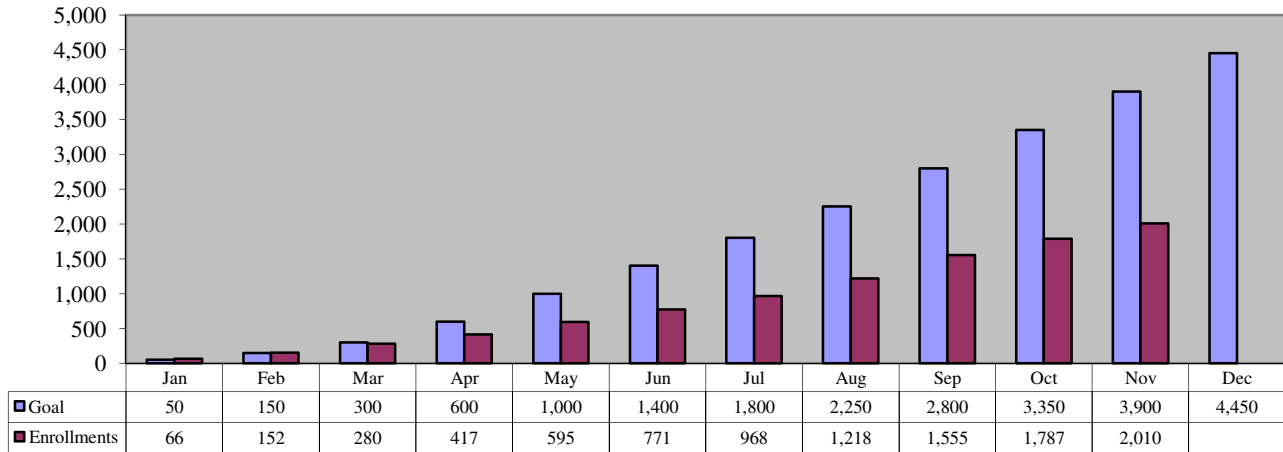


**Home Performance with Energy Star: Statewide Results
Tier 2 Completions YTD**

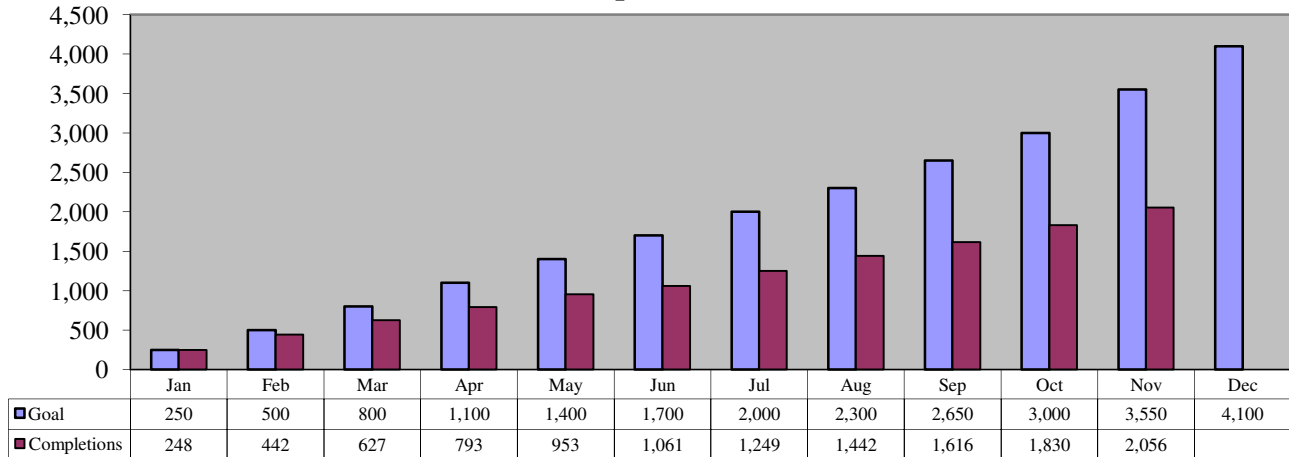


Home Performance with ENERGY STAR

**Home Performance with Energy Star: Statewide Results
Tier 3 Enrollments YTD**



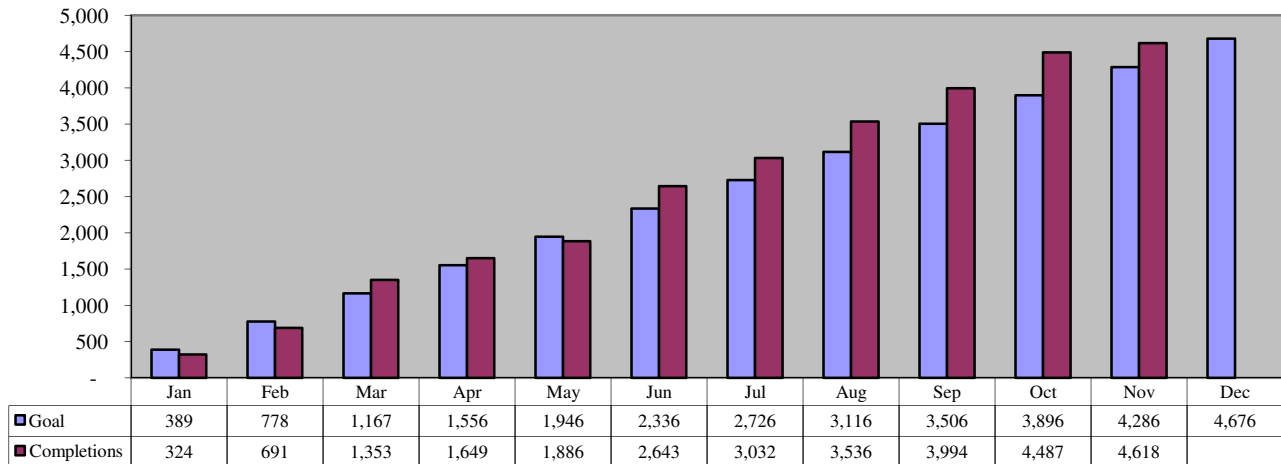
**Home Performance with Energy Star: Statewide Results
Tier 3 Completions YTD**



Comfort Partners

Annual Budget	Expenditures YTD	Expenditures as % of Annual Budget
\$30,829,308	\$21,119,405	68.50%

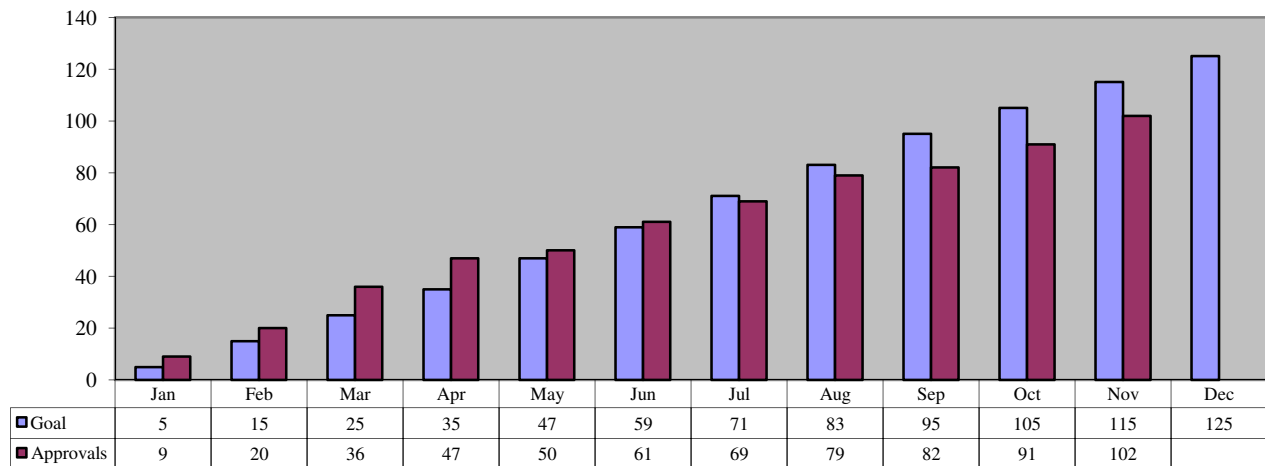
Comfort Partners: Statewide Results Completed Jobs YTD



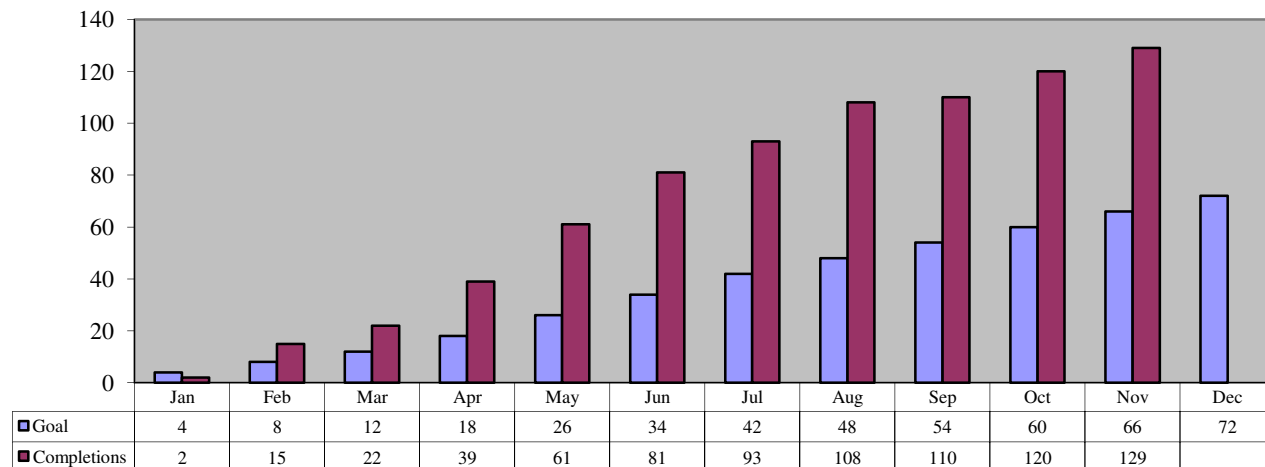
C & I New Construction

Annual Budget	Expenditures YTD	Outstanding Commitments	Expenditures as % of Annual Budget	Expenditures and Committed as % of Annual Budget
\$6,867,143	\$2,292,535	\$2,319,340	33.38%	67.16%

C&I New Construction : Statewide Results Approved Applications YTD



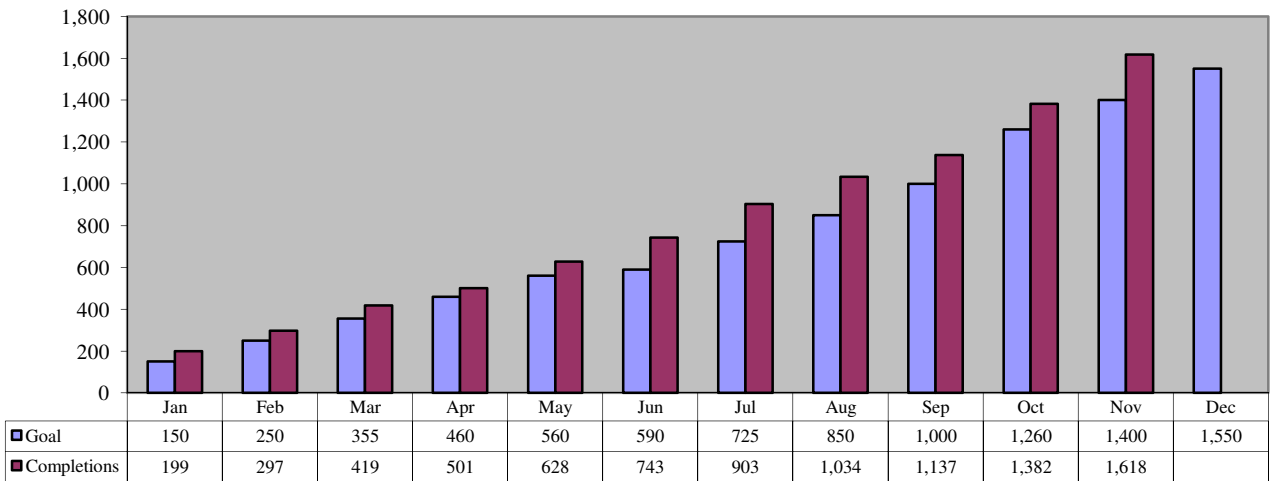
New Construction: Statewide Results Completed Jobs YTD



C & I Retrofit

Annual Budget	Expenditures YTD	Outstanding Commitments	Expenditures as % of Annual Budget	Expenditures and Committed as % of Annual Budget
\$45,899,451	\$14,550,194	\$19,911,320	31.70%	75.08%

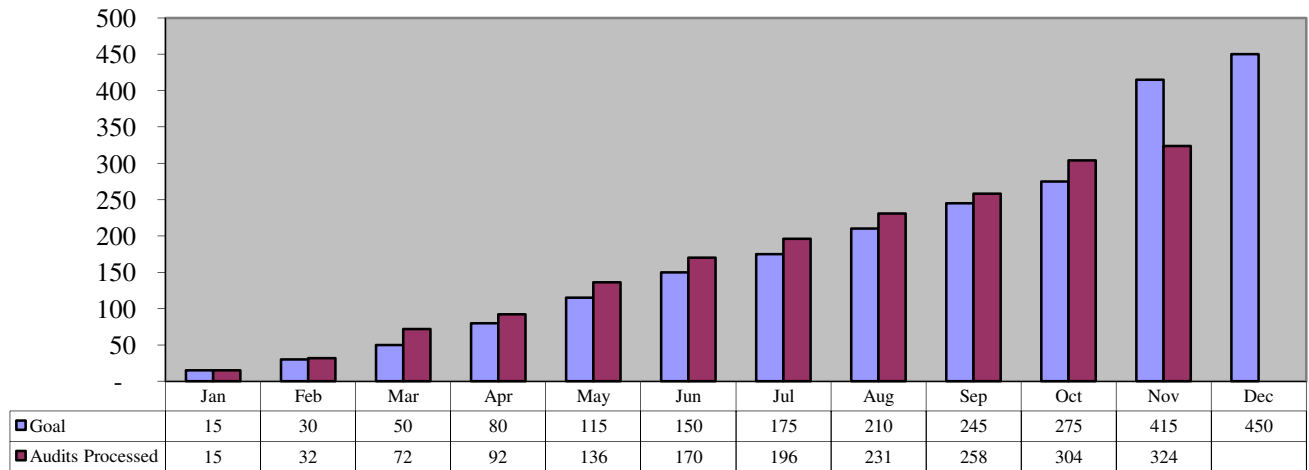
**C&I Retrofit: Statewide Results
Completed Jobs YTD**



Local Government Energy Audit

Annual Budget	Expenditures YTD	Outstanding Commitments	Expenditures as % of Annual Budget	Expenditures and Committed as % of Annual Budget
\$9,115,171	\$3,238,630	\$2,357,680	35.53%	61.40%

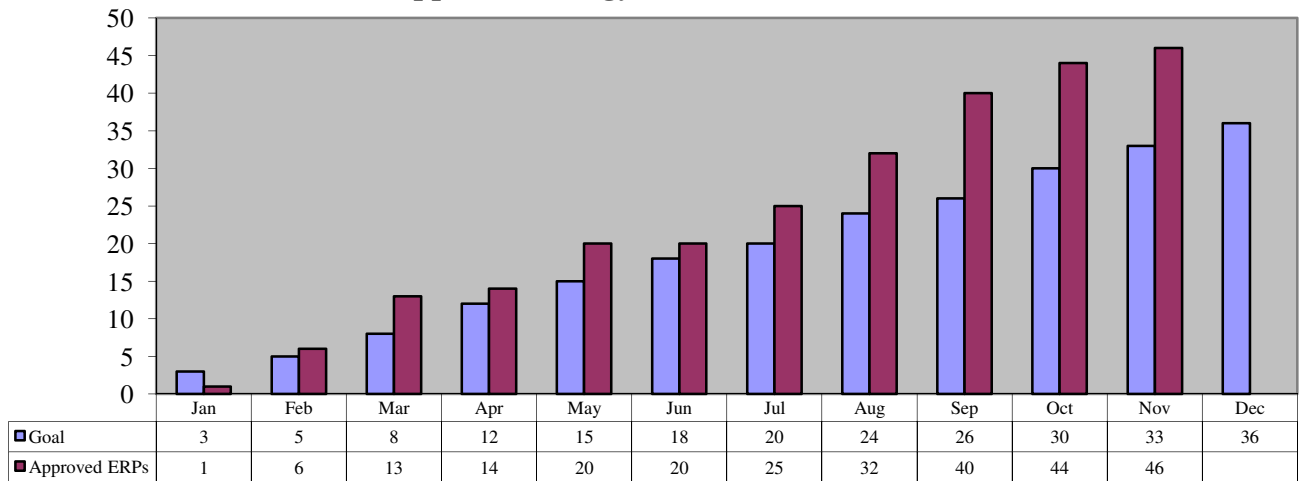
Local Government Energy Audit: Statewide Results Audits Reviewed and Processed YTD



Pay-for-Performance

Annual Budget	Expenditures YTD	Outstanding Commitments	Expenditures as % of Annual Budget	Expenditures and Committed as % of Annual Budget
\$43,355,702	\$4,879,468	\$24,232,780	11.25%	67.15%

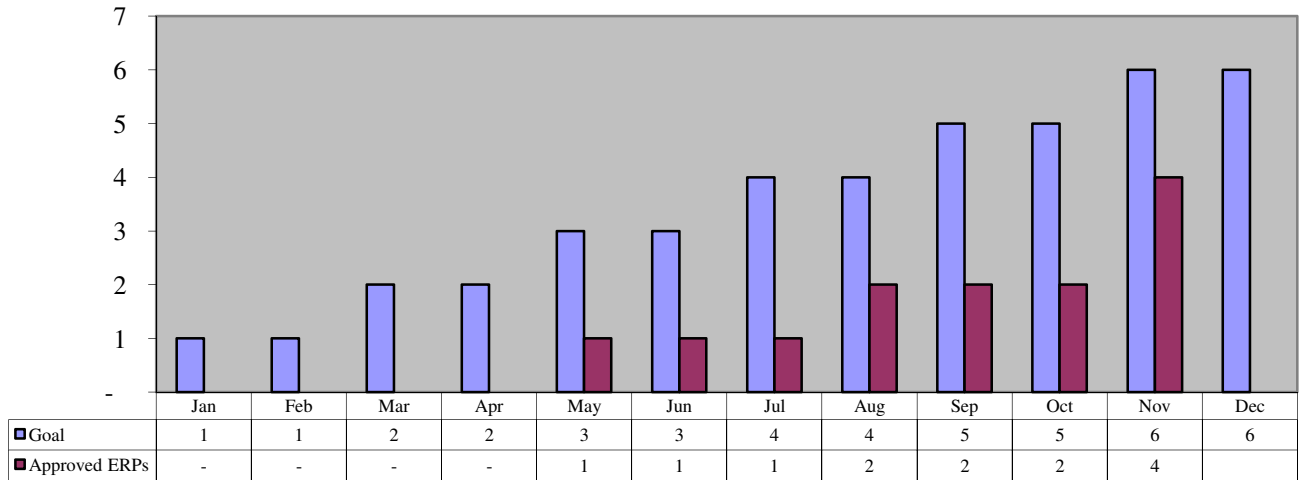
**Pay for Performance: Statewide Results
Approved Energy Reduction Plans YTD**



Pay-for-Performance New Construction

Annual Budget	Expenditures YTD	Outstanding Commitments	Expenditures as % of Annual Budget	Expenditures and Committed as % of Annual Budget
\$7,471,646	\$431,997	\$952,110	5.78%	18.52%

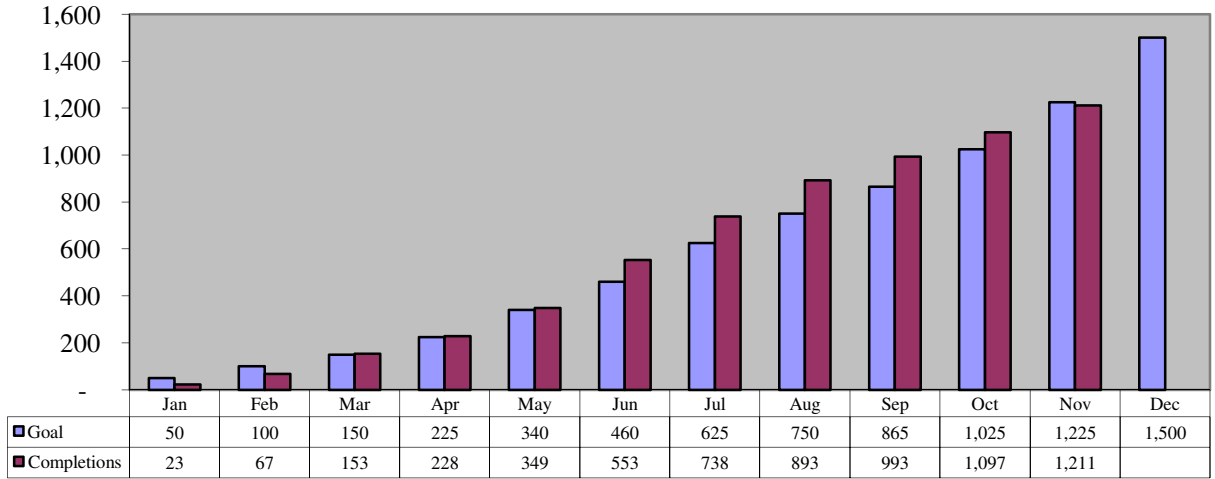
**Pay for Performance New Construction : Statewide Results
Approved Energy Reduction Plans YTD**



Direct Install

Annual Budget	Expenditures YTD	Outstanding Commitments	Expenditures as % of Annual Budget	Expenditures and Committed as % of Annual Budget
\$35,896,151	\$18,935,259	\$11,328,140	52.75%	84.31%

**Direct Install Program: Statewide Results
Completed Jobs YTD**



Large Energy Users Pilot

Annual Budget	Expenditures YTD	Outstanding Commitments	Expenditures as % of Annual Budget	Expenditures and Committed as % of Annual Budget
\$20,000,000	\$63,203	\$0	0.32%	0.32%

LEUP Program Update

MILESTONE	QTY
Entity submits initial application to TRC ⁽¹⁾	22
TRC sends prequalification letter notifying entity to submit their Draft Energy Efficiency Plan ⁽²⁾	20
Entity returns signed prequalification letter to TRC	12
Entity submits Draft Energy Efficiency Plan to TRC for review ⁽³⁾	2

(1) Two of the entities listed above have been found by TRC to be ineligible for the LEUP Program.

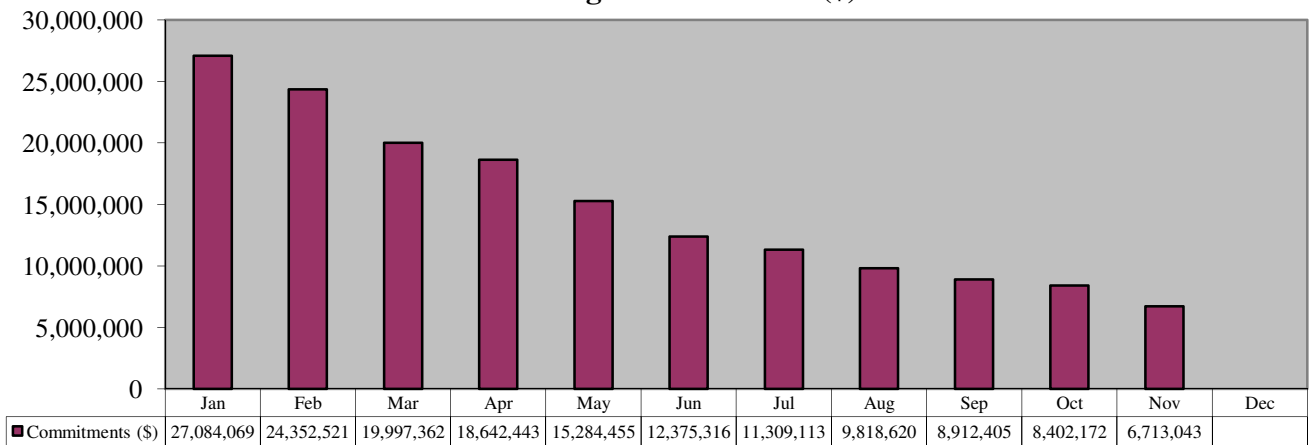
(2) Although no funding has been committed, the 20 eligible projects above represent \$11.8 million of potential incentives.

(3) After TRC's DEEP review they will submit an approval or rejection recommendation to AEG.

Renewable Energy Incentive Program

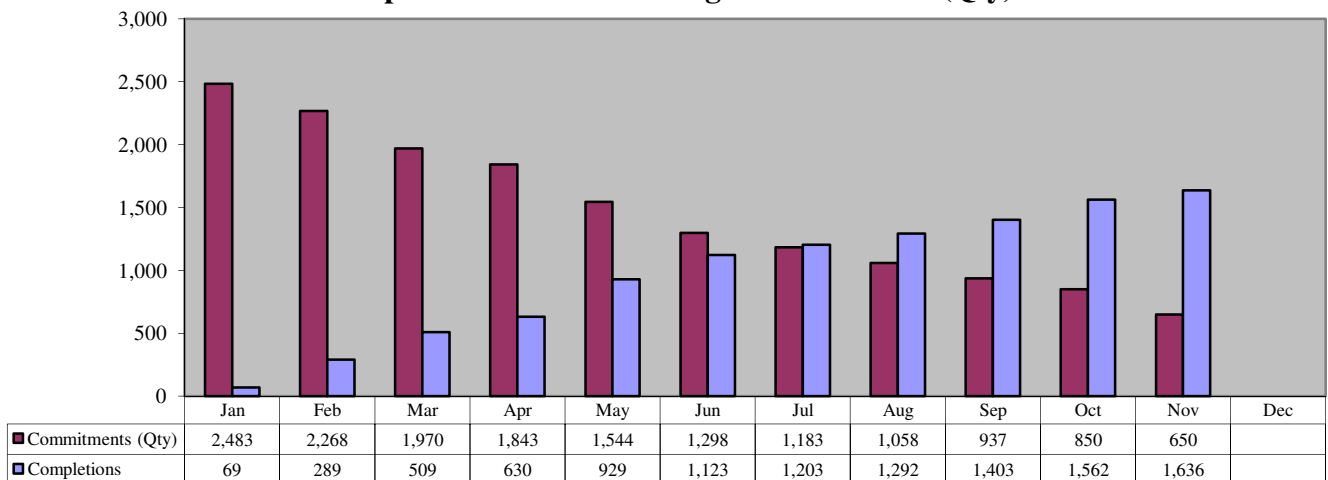
Annual Budget	Expenditures YTD	Outstanding Commitments	Expenditures as % of Annual Budget	Expenditures and Committed as % of Annual Budget
\$41,612,455	\$20,698,785	\$6,713,043	49.74%	65.87%

**Renewable Energy Incentive Program (2010 Program): Statewide Results
Outstanding Commitments (\$) YTD**



The committed dollars listed above represent REIP projects which adhere to the 2010 program guidelines. These commitments should gradually reduce over time.

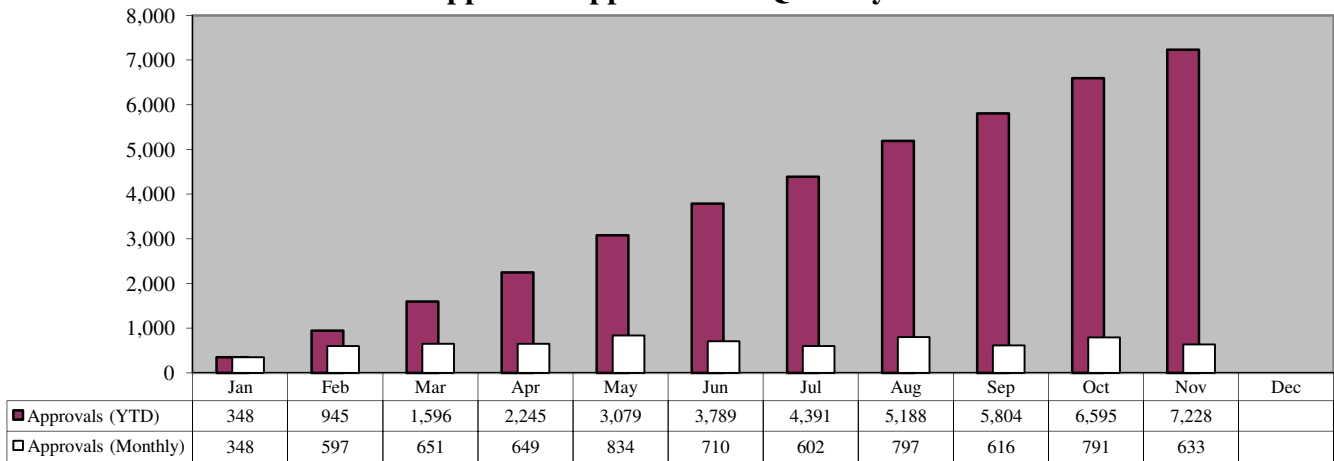
**Renewable Energy Incentive Program (2010 Program): Statewide Results
Completions Vs. Outstanding Commitments (Qty) YTD**



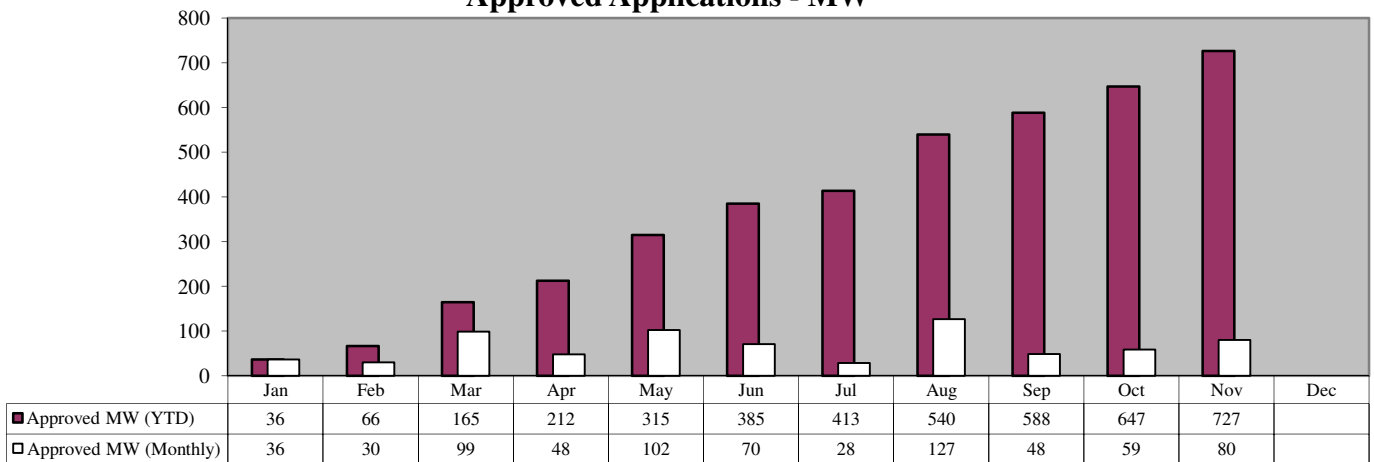
The commitments and completions listed above represent REIP projects which adhere to the 2010 program guidelines. The commitments should gradually reduce over time as projects are completed. It is not necessarily true that the commitments should reduce by exactly the number of completions due to scrubbed projects and project re-activations.

SREC Registration

**SREC Registration: Statewide Results
Approved Applications - Quantity**

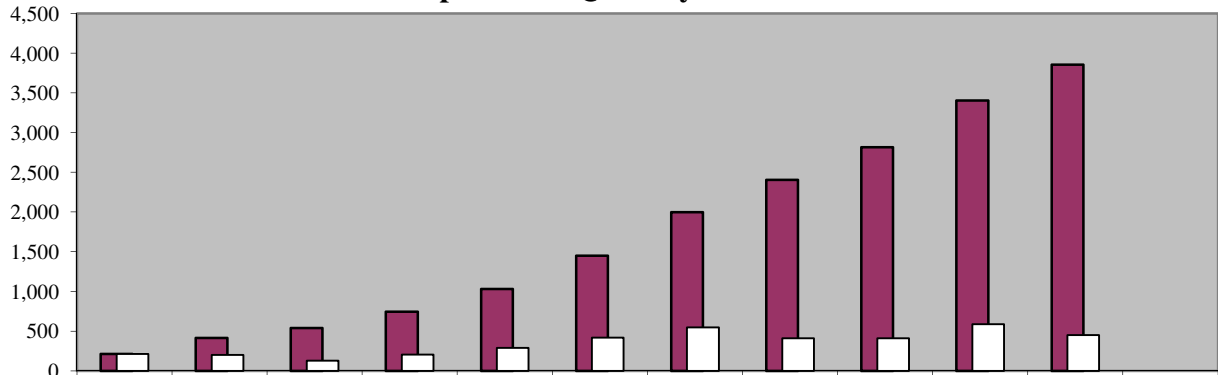


**SREC Registration: Statewide Results
Approved Applications - MW**



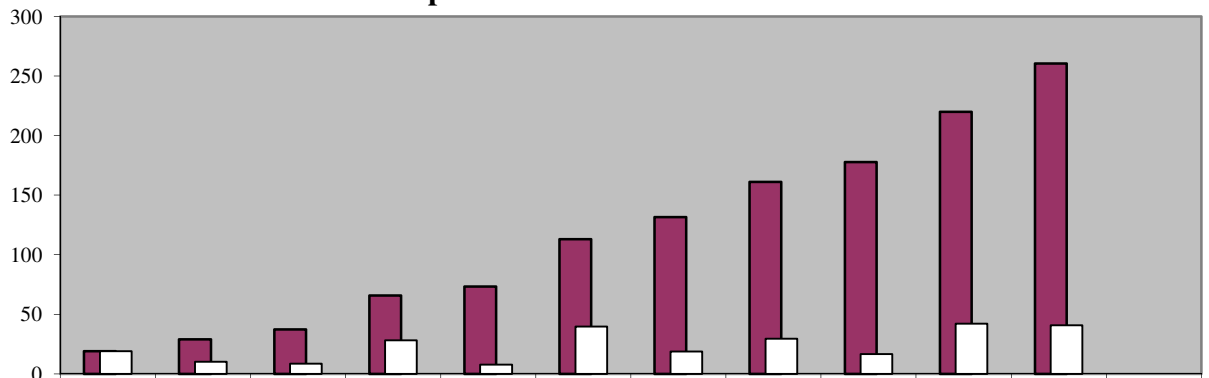
SREC Registration

**SREC Registration: Statewide Results
Completions - Quantity**



■ Completions (YTD)	212	414	540	744	1,032	1,450	1,995	2,405	2,813	3,402	3,852	
□ Completions (Monthly)	212	202	126	204	288	418	545	410	408	589	450	

**SREC Registration: Statewide Results
Completions - MW**

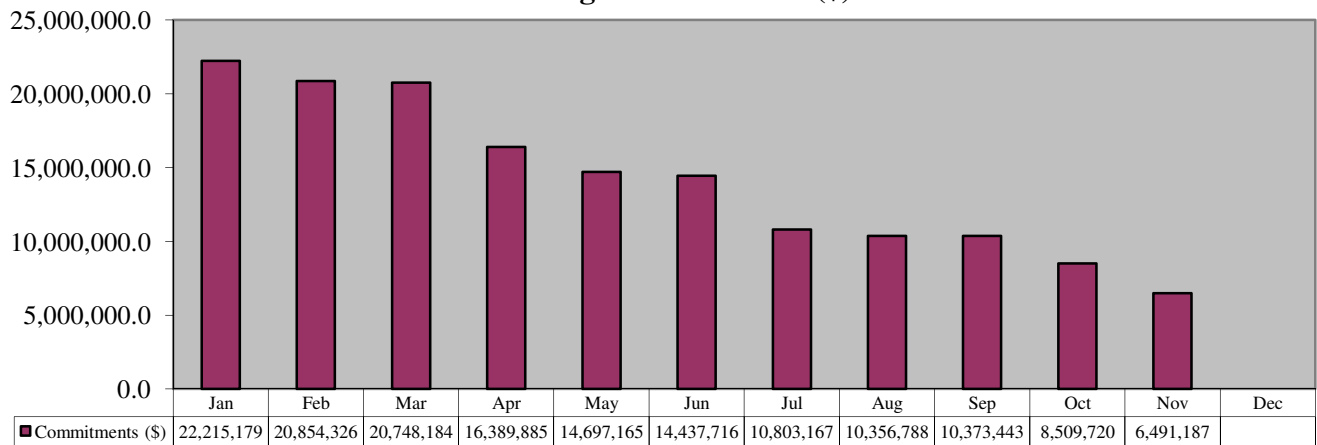


■ Completed MW (YTD)	19	29	37	66	73	113	132	161	178	220	260	
□ Completed MW (Monthly)	19	10	8	28	8	40	19	30	17	42	41	

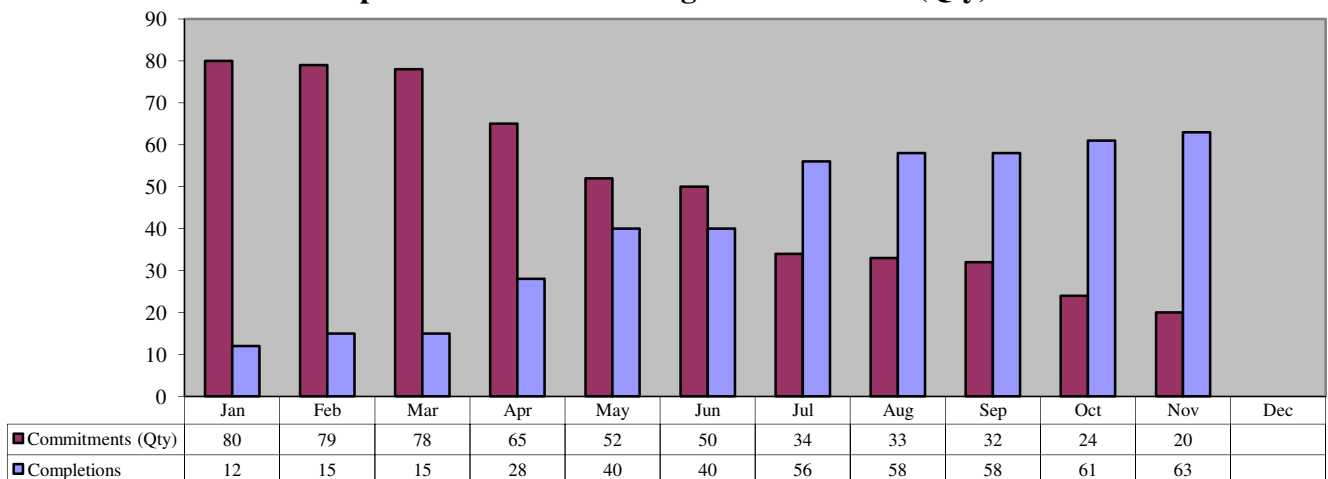
Customer On-Site Renewable Energy (CORE)

Annual Budget	Expenditures YTD	Outstanding Commitments	Expenditures as % of Annual Budget	Expenditures and Committed as % of Annual Budget
\$22,623,674	\$13,079,287	\$6,491,187	57.81%	86.50%

**CORE Program: Statewide Results
Outstanding Commitments (\$) YTD**



**CORE Program: Statewide Results
Completions Vs. Outstanding Commitments (Qty) YTD**



The CORE commitments listed above should gradually reduce over time as projects are completed. It is not necessarily true that the commitments should reduce by exactly the number of completions due to scrubbed projects and project re-activations.

New Jersey's Clean Energy Program
Actual and Committed Expenses for Reporting Year 2011

Statewide Summary - New Jersey's Clean Energy Program
 Reporting Period: YTD thru November 2011

Program	Approved Budget	Actual Expenditures	Committed Expenditures	Actual and Committed Expenditures	Actual Expenditures as % of Authorized	Actual and Committed Expenditures as % of Authorized
Energy Efficiency Programs	\$325,875,452.17	\$113,590,973.08	\$75,568,929.00	\$189,159,902.08	34.86%	58.05%
Renewable Energy Programs	\$90,112,891.01	\$36,392,200.79	\$28,998,764.04	\$65,390,964.83	40.39%	72.57%
EDA Programs	\$57,634,153.38	\$5,780,017.00	\$6,975,983.00	\$12,756,000.00	10.03%	22.13%
Office of Clean Energy	\$7,701,050.81	\$3,001,608.09		\$3,001,608.09	38.98%	38.98%
TRUE Grant	\$25,000,000.00	\$3,210,125.71	\$21,789,874.29	\$25,000,000.00	12.84%	100.00%
TOTAL	\$506,323,547.37	\$161,974,924.67	\$133,333,550.33	\$295,308,475.00	31.99%	58.32%

While the percentages shown in Column (f) are derived by comparing the sum of the actual and committed expenditures reported in Columns (b) and (c), respectively, with the NJBPU budget approved for 2009 and shown in Column (a), it is expected that some of those committed expenses ultimately will be paid from future program budgets.

New Jersey's Clean Energy Program
Actual and Committed Expenses for Reporting Year 2011

Statewide Summary - Energy Efficiency Programs
Reporting Period: YTD thru November 2011

Program	Approved Budget	Actual Expenditures	Committed Expenditures	Actual and Committed Expenditures	Actual Expenditures as % of Authorized	Actual and Committed Expenditures as % of Authorized
RESIDENTIAL ENERGY EFFICIENCY PROGRAMS						
Residential HVAC - Electric & Gas	\$22,724,583.98	\$16,777,518.20		\$16,777,518.20	73.83%	73.83%
Residential New Construction	\$19,943,969.50	\$5,628,239.69	\$8,187,323.00	\$13,815,562.69	28.22%	69.27%
Energy Efficient Products	\$18,193,381.04	\$11,806,575.97		\$11,806,575.97	64.89%	64.89%
Home Performance with Energy Star	\$29,760,156.05	\$11,470,756.56	\$4,693,206.00	\$16,163,962.56	38.54%	54.31%
Marketing - Residential EE	\$1,309,984.00	\$912,591.12		\$912,591.12	69.66%	69.66%
Sub-Total: Residential Energy Efficiency Programs	\$91,932,074.57	\$46,595,681.54	\$12,880,529.00	\$59,476,210.54	50.68%	64.70%
RESIDENTIAL LOW INCOME						
Comfort Partners	\$30,829,308.11	\$21,119,404.72		\$21,119,404.72	68.50%	68.50%
Sub-Total: Residential Low Income	\$30,829,308.11	\$21,119,404.72	\$0.00	\$21,119,404.72	68.50%	68.50%
C & I ENERGY EFFICIENCY PROGRAMS						
C&I New Construction	\$6,867,143.41	\$2,292,534.80	\$2,319,340.00	\$4,611,874.80	33.38%	67.16%
C&I Retrofit	\$45,899,451.30	\$14,550,194.44	\$19,911,320.00	\$34,461,514.44	31.70%	75.08%
Pay-for-Performance New Construction	\$7,471,645.96	\$431,996.74	\$952,110.00	\$1,384,106.74	5.78%	18.52%
Pay-for-Performance	\$43,355,701.50	\$4,879,468.26	\$24,232,780.00	\$29,112,248.26	11.25%	67.15%
Combined Heat & Power (CHP)	\$1,002,122.83	\$0.00	\$1,000,000.00	\$1,000,000.00	0.00%	99.79%
Local Government Energy Audit	\$9,115,170.97	\$3,238,630.00	\$2,357,680.00	\$5,596,310.00	35.53%	61.40%
Direct Install	\$35,896,150.92	\$18,935,259.15	\$11,328,140.00	\$30,263,399.15	52.75%	84.31%
Teaching Energy Awareness with Children's Help (TEACH)	\$682,829.50	\$95,787.50	\$587,030.00	\$682,817.50	14.03%	100.00%
Marketing - Commercial & Industrial EE	\$1,075,000.00	\$1,002,507.99		\$1,002,507.99	93.26%	93.26%
Large Energy Users Pilot	\$20,000,000.00	\$63,203.10	\$0.00	\$63,203.10	0.32%	0.32%
Sub-Total: C & I Energy Efficiency Programs	\$171,365,216.39	\$45,489,581.98	\$62,688,400.00	\$108,177,981.98	26.55%	63.13%
OTHER ENERGY EFFICIENCY PROGRAMS						
Green Jobs and Building Code Training	\$678,853.10	\$195,895.63		\$195,895.63	28.86%	28.86%
Competitive Grant/Loan Solicitation	\$30,000,000.00	\$0.00		\$0.00	0.00%	0.00%
Sustainable Jersey	\$1,070,000.00	\$190,409.21		\$190,409.21	17.80%	17.80%
Sub-Total: Other Energy Efficiency Programs	\$31,748,853.10	\$386,304.84	\$0.00	\$386,304.84	1.22%	1.22%
TOTAL	\$325,875,452.17	\$113,590,973.08	\$75,568,929.00	\$189,159,902.08	34.86%	58.05%

While the percentages shown in Column (f) are derived by comparing the sum of the actual and committed expenditures reported in Columns (b) and (c), respectively, with the NJBPU budget approved for 2009 and shown in Column (a), it is expected that some of those committed expenses ultimately will be paid from future program budgets.

New Jersey's Clean Energy Program
Actual and Committed Expenses for Reporting Year 2011

Statewide Summary - Renewable Energy Programs
Reporting Period: YTD thru November 2011

Program	Approved Budget	Actual Expenditures	Committed Expenditures	Actual and Committed Expenditures	Actual Expenditures as % of Authorized	Actual and Committed Expenditures as % of Authorized
Customer On-Site Renewable Energy (CORE)	\$22,623,674.18	\$13,079,287.21	\$6,491,186.90	\$19,570,474.11	57.81%	86.50%
Clean Power Choice	\$68,400.00	\$26,813.48		\$26,813.48	39.20%	39.20%
Offshore Wind	\$10,870,253.00	\$1,051,845.00	\$9,818,408.00	\$10,870,253.00	9.68%	100.00%
Renewable Energy Program: Grid Connected (REDI)	\$11,282,831.73	\$0.00	\$3,856,320.00	\$3,856,320.00	0.00%	34.18%
Renewable Energy Incentive Program	\$41,612,455.10	\$20,698,784.52	\$6,713,042.72	\$27,411,827.24	49.74%	65.87%
Edison Innovation Clean Energy Fund (CST)	\$3,655,277.00	\$1,535,470.58	\$2,119,806.42	\$3,655,277.00	42.01%	100.00%
TOTAL	\$90,112,891.01	\$36,392,200.79	\$28,998,764.04	\$65,390,964.83	40.39%	72.57%

While the percentages shown in Column (f) are derived by comparing the sum of the actual and committed expenditures reported in Columns (b) and (c), respectively, with the NJBPU budget approved for 2009 and shown in Column (a), it is expected that some of those committed expenses ultimately will be paid from future program budgets.

New Jersey's Clean Energy Program
Actual and Committed Expenses for Reporting Year 2011

Statewide Summary - EDA Programs
 Reporting Period: YTD thru November 2011

Program	Approved Budget	Actual Expenditures	Committed Expenditures	Actual and Committed Expenditures	Actual Expenditures as % of Authorized	Actual and Committed Expenditures as % of Authorized
Edison Innovation Clean Energy Manufacturing Fund (CEMF)	\$35,634,153.38	\$5,395,017.00	\$6,975,983.00	\$12,371,000.00	15.14%	34.72%
Edison Innovation Green Growth Fund (EIGGF)	\$4,000,000.00	\$55,000.00	\$0.00	\$55,000.00	1.38%	1.38%
EE Revolving Loan Fund (EERLF)	\$18,000,000.00	\$330,000.00	\$0.00	\$330,000.00	1.83%	1.83%
TOTAL	\$57,634,153.38	\$5,780,017.00	\$6,975,983.00	\$12,756,000.00	10.03%	22.13%

While the percentages shown in Column (f) are derived by comparing the sum of the actual and committed expenditures reported in Columns (b) and (c), respectively, with the NJBPU budget approved for 2009 and shown in Column (a), it is expected that some of those committed expenses ultimately will be paid from future program budgets.

New Jersey's Clean Energy Program
Actual and Committed Expenses for Reporting Year 2011

Statewide Summary - Office of Clean Energy Reporting Period: YTD thru November 2011	Approved Budget	Actual Expenditures	Actual Expenditures as % of Authorized
Program			
OCE ADMINISTRATION AND OVERHEAD			
OCE Staff and Overhead	\$1,477,499.04	\$201,473.53	13.64%
Program Coordinator	\$2,067,983.00	\$1,733,745.50	83.84%
<i>Sub-Total: Oce Administration And Overhead</i>	<i>\$3,545,482.04</i>	<i>\$1,935,219.03</i>	<i>54.58%</i>
MEMBERSHIPS-DUES			
Clean Energy States Alliance	\$25,000.00	\$0.00	0.00%
Consortium for Energy Efficiency	\$133,817.00	\$131,196.00	98.04%
<i>Sub-Total: Memberships-Dues</i>	<i>\$158,817.00</i>	<i>\$131,196.00</i>	<i>82.61%</i>
OCE EVALUATION AND RELATED RESEARCH			
Rutgers-CEEEP	\$908,415.71	\$387,802.07	42.69%
Funding Reconciliation	\$21,055.00	\$0.00	0.00%
O&M Scoping Study/Online Academy	\$450,000.00	\$391,097.89	86.91%
Other Studies	\$44,566.75	\$0.00	0.00%
Program Evaluation	\$1,951,779.65	\$156,293.10	8.01%
Financial Audits	\$498,162.35	\$0.00	0.00%
<i>Sub-Total: Oce Evaluation And Related Research</i>	<i>\$3,873,979.46</i>	<i>\$935,193.06</i>	<i>24.14%</i>
OCE MARKET AND COMMUNICATIONS			
Outreach and Education/Community Partner Grants	\$122,772.31	\$0.00	0.00%
<i>Sub-Total: Oce Market And Communications</i>	<i>\$122,772.31</i>	<i>\$0.00</i>	<i>0.00%</i>
TOTAL	<i>\$7,701,050.81</i>	<i>\$3,001,608.09</i>	<i>38.98%</i>

New Jerseys Clean Energy Program
Actual and Committed Expenses for Reporting Year 2011

Statewide Summary - TRUE Grant
 Reporting Period: YTD thru November 2011

Program	Approved Budget	Actual Expenditures	Committed Expenditures	Actual and Committed Expenditures	Actual Expenditures as % of Authorized	Actual and Committed Expenditures as % of Authorized
TRUE Grant	\$25,000,000.00	\$3,210,125.71	\$21,789,874.29	\$25,000,000.00	12.84%	100.00%
TOTAL	\$25,000,000.00	\$3,210,125.71	\$21,789,874.29	\$25,000,000.00	12.84%	100.00%

While the percentages shown in Column (f) are derived by comparing the sum of the actual and committed expenditures reported in Columns (b) and (c), respectively, with the NJBPU budget approved for 2009 and shown in Column (a), it is expected that some of those committed expenses ultimately will be paid from future program budgets.

New Jersey's Clean Energy Program
Actual and Committed Expenses for Reporting Year 2011

Statewide Summary: Available Funding
 Reporting Period: YTD thru November 2011

Available NJCEP Funds (Excluding EDA Available Funds)

Program	Available Funds as of 12/31/2010 (a)	Actual Expenses as of 11/30/2011 (b)	Available Funds as of 11/30/2011 (c)=(a)-(b)	Commitments as of 11/30/2011 (d)	Funds in Excess of Commitments (e)=(c)-(d)
NJCEP New Jersey's Clean Energy Program	\$510,534,264.15	\$156,194,907.67	\$354,339,356.48	\$126,357,567.33	\$227,981,789.15
<i>New Jersey's Clean Energy Program</i>	<i>\$510,534,264.15</i>	<i>\$156,194,907.67</i>	<i>\$354,339,356.48</i>	<i>\$126,357,567.33</i>	<i>\$227,981,789.15</i>

(a) Available Funds = Funds available in CEP Trust Fund through December 31, 2010.

Available EDA Funds

Program	Available Funds as of 12/31/2010 (a)	Program Reallocations as of 11/30/2011 (b)	Program Income as of 11/30/2011 (c)	Actual Expenses as of 11/30/2011 (d)	Available Funds as of 11/30/2011 (e)=(a)+(b)+(c)-(d)	Commitments as of 11/30/2011 (f)	Funds in Excess of Commitments as of 11/30/2011 (g)=(e)-(f)
EDA PROGRAMS							
Edison Innovation Clean Energy Manufacturing Fund (CEMF)	\$26,040,592.00	\$0.00	\$55,780.19	\$5,395,017.00	\$20,701,355.19	\$6,975,983.00	\$13,725,372.19
Edison Innovation Green Growth Fund (EIGGF)	\$2,000,000.00	\$0.00	\$906.66	\$55,000.00	\$1,945,906.66	\$0.00	\$1,945,906.66
EE Revolving Loan Fund (EERLF)	\$9,000,000.00	\$0.00	\$4,155.51	\$330,000.00	\$8,674,155.51	\$0.00	\$8,674,155.51
<i>EDA Programs</i>	<i>\$37,040,592.00</i>	<i>\$0.00</i>	<i>\$60,842.36</i>	<i>\$5,780,017.00</i>	<i>\$31,321,417.36</i>	<i>\$6,975,983.00</i>	<i>\$24,345,434.36</i>

(a) Available Funds = Funds available in the EDA account as of 12/31/2010.

Notes and Definitions

Notes and Definitions	
1	A commitment exists where the associated customer has received a letter of commitment or other signed agreement from the utility and the project is slated for completion within two years. Once completed and paid, a committed project should be shifted from "Committed" to "Installed". Committed figures should also be adjusted to reflect any commitments that are cancelled.
2	Committed Expenditures are those expenditures related to contractual commitments made in the reporting period, but not expected to arise until some future reporting period. A committed expenditure may also be represented by a contractor who has completed the work, but has yet to be paid.
3	Installed Savings represents the savings accrued as a result of the initiation of a given program and the installation of recorded measures.
4	Committed Savings represents the savings that will accrue from contractual commitments for program participation made in the reporting period, but scheduled for installation in future reporting periods.
5	Annual Savings means the yearly (12 months) savings that will result from a measure installed or committed to during the program year.
6	Lifetime Savings means the savings to be accrued over the expected life of a measure installed or committed to during the program year.