



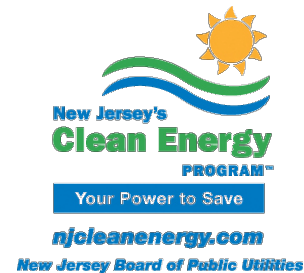
New Jersey's Clean Energy Program

KWH Metering

- Requirements
- Location in Circuit

June 8, 2011

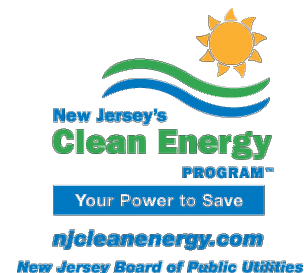
Robert A. Menist



Requirements



- Renewable Energy KWH Meter Required:
 - All SREC Registration Program projects (REIPNR, SRP)
 - Any solar residential system > 10kW
 - All non-residential systems
 - All wind and biopower systems
- Completed System Metering/ Monitoring Worksheet
- Verify Meter Operation



Specifications



- Certified/Traceable to ANSI C12.1-2008
- Minimum Accuracy;
 - 5% (systems 10KW or less)
 - 1% (systems larger than 10KW)
- Bi-directional



Circuit Location



- Voltage and Current Taps are Common to the Same Supply. Not Through Isolation Transformers.
- Meter is Overload Protected
- Current is Measuring all Power



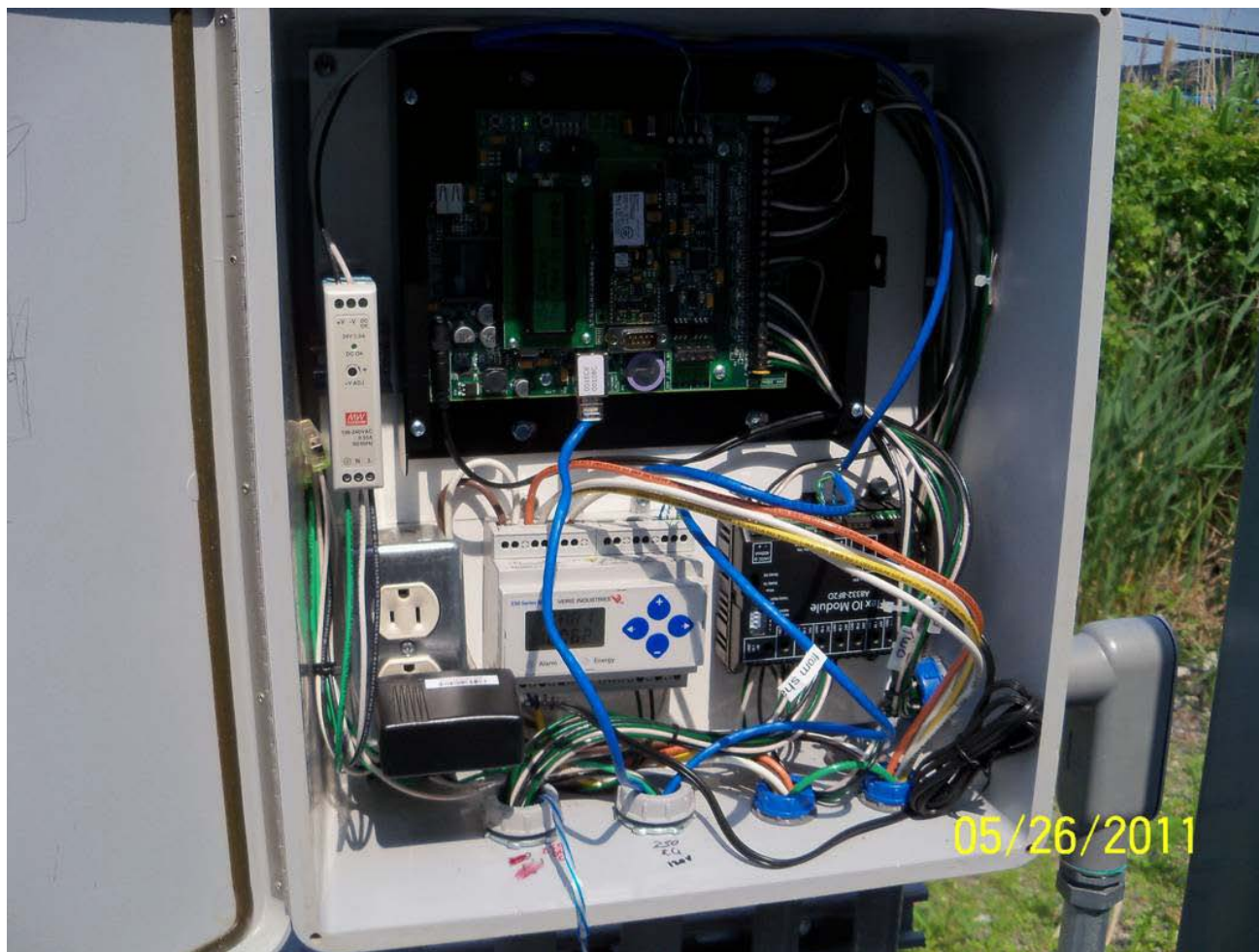
Styles of Meters



- Transducers
- Plug in Styles
- With or W/O Display







Your Power to Save

njcleanenergy.com

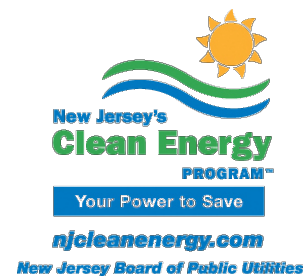
New Jersey Board of Public Utilities

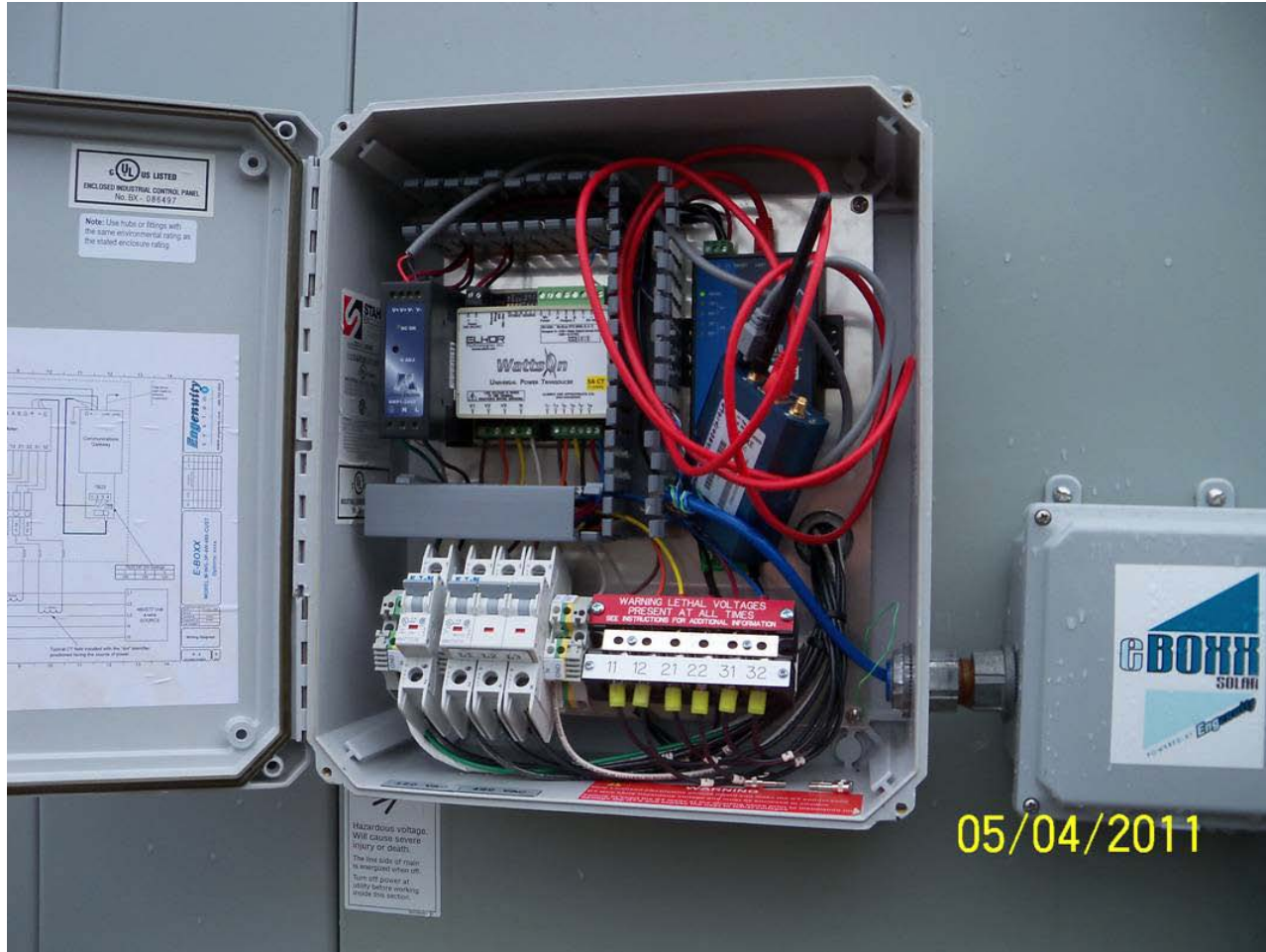


No Fault
Code Display

05/25/2011







Transducer Without Display, Verification of Operation must be Demonstrated



Audit/Inspection



- Verification/Operation
- Visual Tests;
 - View output/display
 - If KW option, check against inverter display
 - Scroll through menus to view positive output
- No Visual Output Available?
 - Bring a laptop to view output
 - Or prepared to give inspector a resource to view (via net)
 - And a print out showing past data is helpful and appreciated

