



# Energy Benchmarking Report for Forked River Elementary School Forked River, *NJ*

(for the period: January 2006 through December 2008)

Prepared by:



## **Background & Findings**

The New Jersey Clean Energy Program (NJCEP) developed the *TEACH Program* to support New Jersey K-12 public schools in the pursuit of energy efficiency. The analysis provided by the *TEACH Program* is designed to help you in three ways:

- Understand the energy consumption and cost trends at each of your buildings,
- See how your buildings are doing compared to other schools locally and nationally, and
- Identify opportunities for improving operations and reducing costs.

We based our analysis on the description of your school that you provided us — size, number of students, types of heating & cooling, cooking facilities, number of PCs, etc. We also used your utility bills to assess your electricity and heating fuel consumption for the year(s) provided. A summary table of your school's building, use, and cost information is provided on the following page.

We then compared your school's information against two different sets of school energy data: U.S. EPA's national data and NJCEP's New Jersey data. The results are illustrated in a graph on the following page for each year provided. The seven major *TEACH Program Benchmarks* represented include: U.S. EPA Score, total energy use, electricity use, heating fuel use, and total cost, all of which have been normalized for comparison by either square footage or number of students. These benchmarks are further explained in the rest of the report.

An additional page of graphs tracks your monthly electricity use, electricity demand, and heating fuel use figures. Although the monthly usage graphs do not include comparisons with other schools in New Jersey or nationwide, they give you a clear picture of how your school consumes energy over the course of a year. Monthly figures also tend to be useful for anyone who is interested in performing an onsite energy audit.

As part of the Program's focus on sustainability, your school's carbon footprint is also presented.

On the last page we have included some recommended next steps and a discussion of the applicable NJCEP programs available to support you, including programs for onsite energy audits.

## Forked River Elementary School Building Summary

Building Data			
District	Lacey Township SD	School Name	Forked River Elementary School
City	Forked River	Zip Code	08731
Year Built	1959	Floor Area (sq.ft.)	46,000
Number of Students	540	Number of PCs	90
Weekly Operating Hours	40	Months School Used	10
Cooking?	YES	% AC	20
Pool Size?	N/A	Months Pool Used	N/A

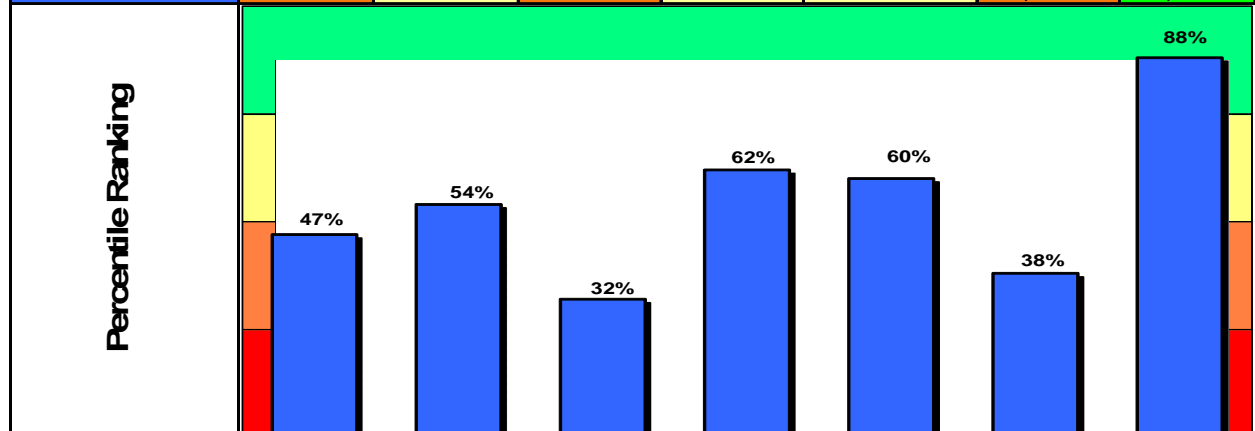
Utility Data			
Data End Point	12/31/2008	Total Cost (\$)	90,499
Electricity Usage (kWh)	338,960	Electricity Cost (\$)	56,492
Natural Gas Usage (therms)	22,776	Natural Gas Cost (\$)	34,007
Fuel Oil Usage (gal)	0	Fuel Oil Cost (\$)	0
Other Fuel Usage (gal)	0	Other Fuel Cost (\$)	0

Energy Indicators			
EPA Score	47	Electric Usage (kWh/sq.ft.)	7.4
Heating Fuel Usage (kBtu/sq.ft.)	50	Weather Adjusted Heating Usage (Btu/sq.ft./HDD)	10.9
Site Energy (kBtu/sq.ft.)	75	Source Energy (kBtu/sq.ft.)	127

Environmental Impact Indicators			
<b>Carbon Emissions</b>			
Last Year Heating Fuel CO <sub>2</sub> (tons)	132.6	Last Year Total CO <sub>2</sub> (tons)	271.4
Last Year Electricity CO <sub>2</sub> (tons)	138.8	CO <sub>2</sub> Efficiency Savings Over Previous Year (tons)	12.8
<b>EPA Target Score</b>			
Target Score	75	Site Energy Reduction Needed (kBtu/sq.ft.)	17.5

## Forked River Elementary School Energy Smart Schools Benchmarks

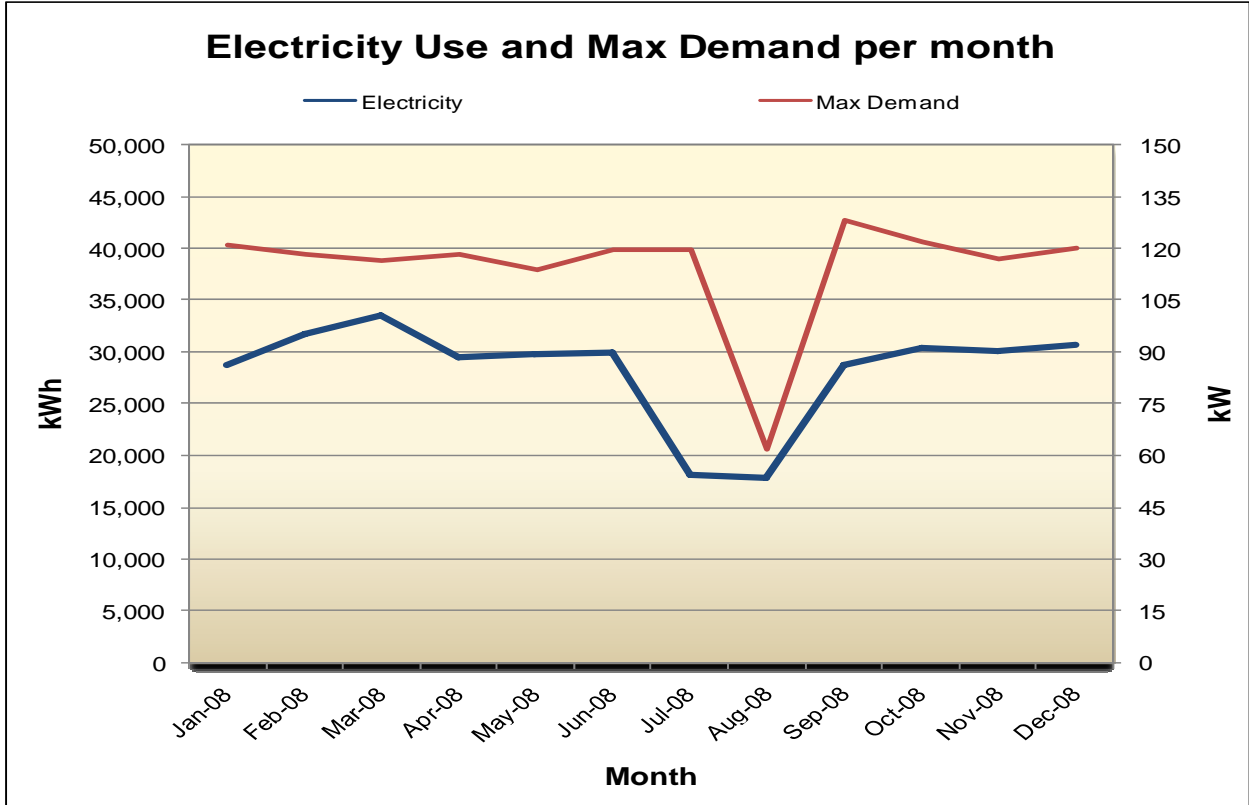
Schools	U.S. EPA Portfolio Manager Score	New Jersey State Schools (annual data)					
		Total Energy Use (kBtu/sq.ft.)	Electric Use (kWh/sq.ft.)	Heating Fuel Use (kBtu/sq.ft.)	Weather Adjusted Heating Fuel Use (Btu/sq.ft./HDD)	Total Energy Cost (\$/sq.ft.)	Total Energy Cost (\$/student)
2006 NJ Average	50	82	8.4	51	12.0	\$2.11	\$254
2007 NJ Average	50	72	6.3	48	10.7	\$1.66	\$195
2008 NJ Average	50	76	5.6	53	11.3	\$1.84	\$223
2006	45	77	7.3	52	12.4	\$2.04	\$174
2007	43	79	7.5	53	11.5	\$2.08	\$177
2008	47	75	7.4	50	10.9	\$1.97	\$168



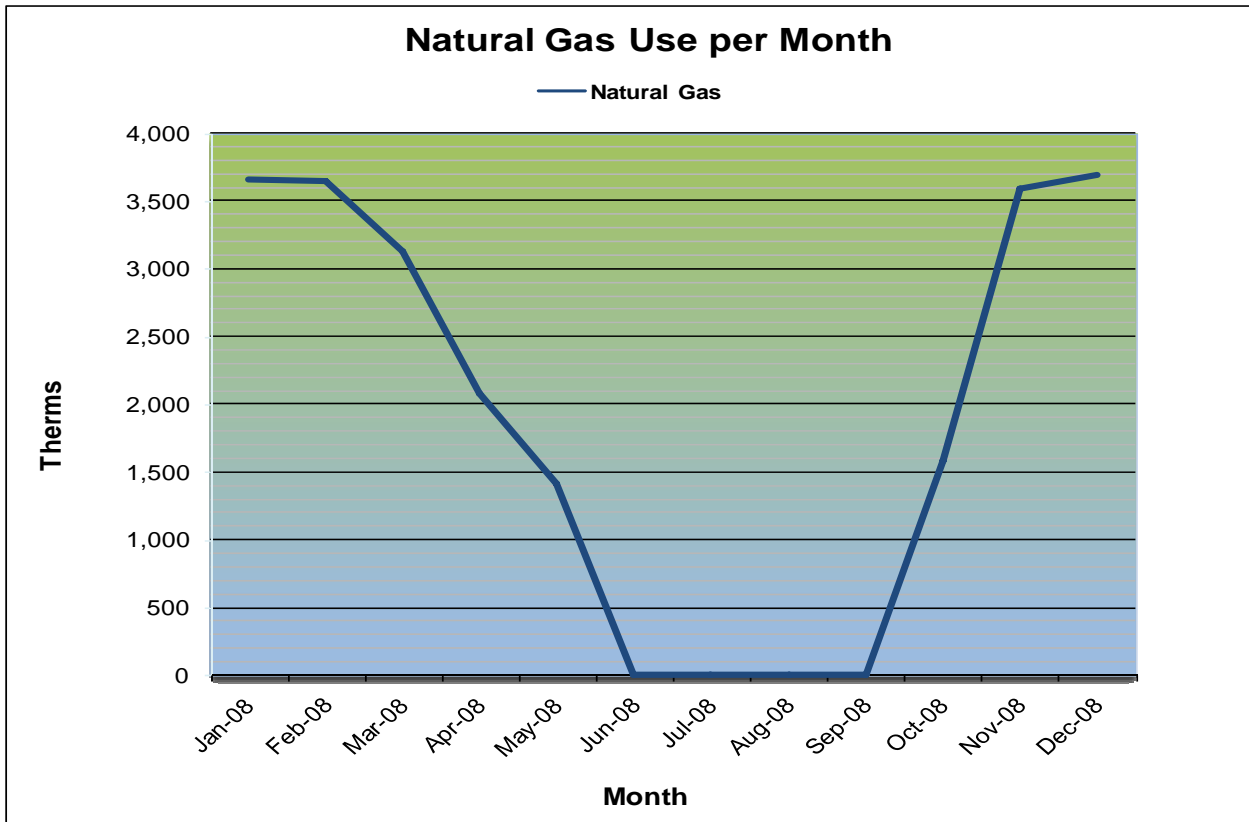
TRC Energy Services is under contract to NJCEP as the Market Manager for the TEACH Program.



## Forked River Elementary School Monthly Electric Use & Max Demand



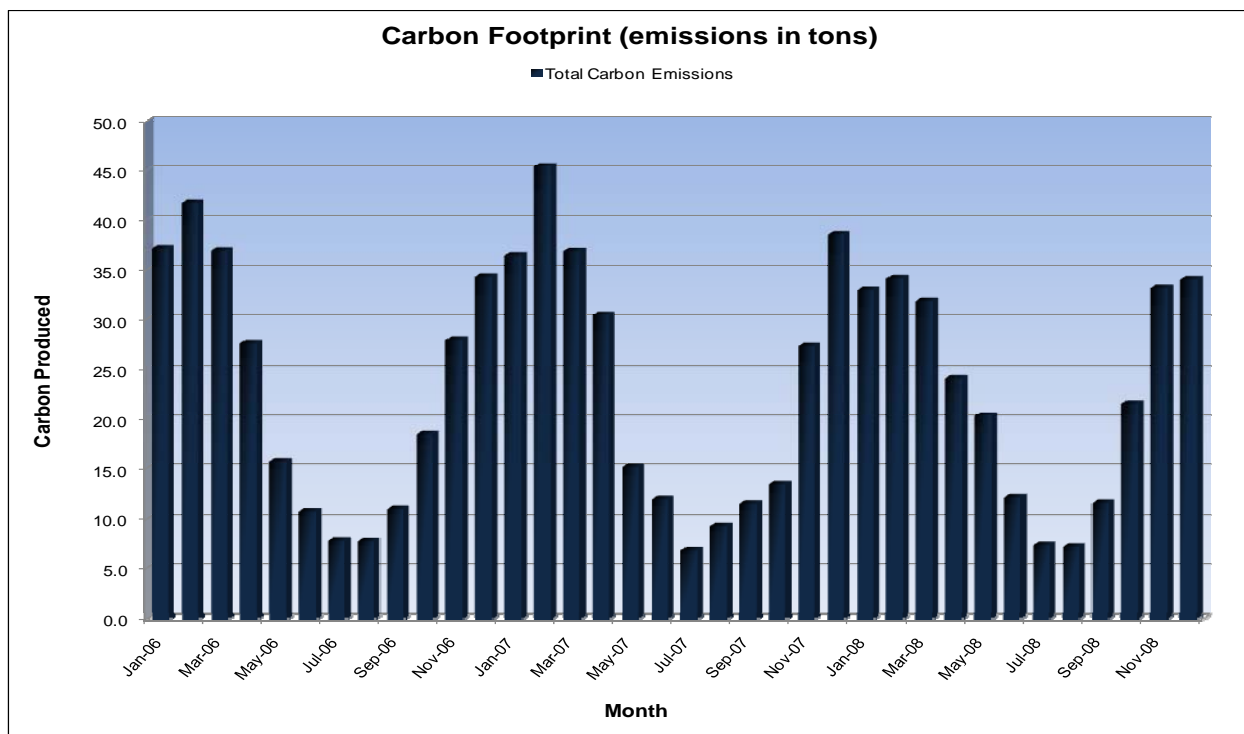
## Forked River Elementary School Monthly Heating Fuel Use



TRC Energy Services is under contract to NJCEP as the Market Manager for the TEACH Program.



## Forked River Elementary School Monthly Carbon Emissions



### U.S. EPA Portfolio Manager Score

*Portfolio Manager* is a benchmarking model based on a national set of data from K-12 schools. It is provided by the U.S. Environmental Protection Agency’s ENERGY STAR® Program. The impact of factors outside of your control (such as location, occupancy, and operating hours) are removed, providing a 1-100 ranking of a school’s energy performance relative to the national school building market. A score of 50 represents the national average, and a score of 100 is best. Schools that achieve a score of 75 or higher are eligible for EPA’s ENERGY STAR® Building Label, the national symbol for protecting the environment through energy efficiency. Districts can achieve recognition as an ENERGY STAR® Leader if their buildings on average improve by 10 percent or more from one year to the next.

Your school’s *Portfolio Manager* score of 47 places it higher than 47% of K-12 schools nationwide.

### New Jersey Schools (Annual Data)

The second data set is made up solely of New Jersey K-12 schools for which NJCEP has obtained building characteristics and at least one-year of energy consumption data. Within this data set, we compared your school’s annual energy use with others based on the four main categories listed below. These comparisons allow you to see how you’re doing relative to other buildings designed and constructed to the same New Jersey codes standards, operating under the same New Jersey Education Department regulations and schedules, and operating under similar weather conditions — in other words, comparing ‘apples-to-apples.’ The indicators are calculated on a *per square foot* or *per student* basis, so you can compare yourself to different sized schools.

TRC Energy Services is under contract to NJCEP as the Market Manager for the TEACH Program.



**Total energy use — New Jersey Average: 76 kBtu/sq.ft.**

This indicator shows how much total energy — heating, cooling (if any), lights, cooking, computers, etc. — your school consumes each year.

Your school's total energy use of 75 kBtu per square foot per year is near average when compared to other New Jersey K-12 schools.

This is a good indicator of how well, overall, your school is performing. However, it doesn't help you find **where** in your building to look for improvement opportunities. The two factors below can help with that.

**Electric use — New Jersey Average: 5.6 kWh/sq.ft.**

When looking solely at electric consumption, you eliminate the effects of your heating plant. You're now seeing how well the building does with its lights, cooling and cafeteria systems (if any), and what's referred to as "plug load". Plug load is just that — anything that plugs into a socket. In schools, the major plug loads are generally computers (including monitors, printers and copiers), refrigerators, coffee machines, fans, shop equipment, and projectors. If electric consumption is much higher than average, but heating fuel use (see below) is average or better, then you can focus your efforts on the electric-powered elements listed above.

Your school's electric consumption of 7.4 kWh per square foot per year is higher than 68% of New Jersey schools.

**Electric Demand — New Jersey Average: 2.5 W/sq.ft.**

When it comes to electricity, most electric rate structures use 2 factors to determine what your bill will be. The first factor we discussed above and that is the building's usage. The second factor is known as demand. Demand is the maximum amount of draw that your plug load places on the grid. To give an analogy; if electricity usage is the amount of water going through a hose in gallons, demand would be the pressure of that water in pounds per square inch. There are a number of different ways an electric utility may measure demand. The most common one is that they add up the kW draw that your building places on the electric grid for a 15 minute period. Whichever 15 minute period during your billing cycle places the highest kW demand on the grid that will be the demand factor applied to your bill. The best way to improve this demand factor is to stagger the times when your electrical systems draw at their maximum or reduce unnecessary plug load altogether. In this way you can reduce the maximum draw of your building and reduce the demand factor applied to your bill.

Your school's electric demand of 2.79 Watts per square foot is higher than 60% of New Jersey schools.

**Heating fuel use — New Jersey Average: 53 kBtu/sq.ft. or 11.3 Btu/sq.ft./HDD**

Reviewing these indicators is relatively straightforward. If your school's heating fuel use is much higher than average, an audit of your heating system along with your building envelope — doors, windows, roof — is recommended. This factor is 'fuel-neutral.' That is, it works for either fuel oil or natural gas heating systems.

Your heating fuel use of 50 kBtu per square foot per year is lower than 62% of other New Jersey schools in the database. Your weather adjusted heating fuel use of 10.9 Btu per square foot per total annual heating degree days is lower than 60% of other New Jersey schools.

### **Energy cost — New Jersey Averages: \$1.84/sq.ft. and \$223/student**

Cost is the bottom line. These numbers help you understand how much — in terms of budget — that you have to gain through energy efficiency improvements.

Your annual energy cost of \$1.97 per square foot is higher than 62% of other New Jersey schools. Your cost expressed on a per student basis of \$168 is lower than 88% of other New Jersey schools.

### **Recommendations**

As you know, energy efficiency is becoming an increasingly large concern in schools as utility prices continue to rise. Since 2003, the price of natural gas has increased by 137%, the price of fuel oil has increased by 93%, and the price of electricity has increased by 12%. NJCEP's programs are designed to help New Jersey tackle these issues with financial and personal support. Accordingly, schools that have participated in similar benchmarking programs in other states have shown a decrease in overall energy use of nearly 20% by using the benchmarking reports to take pro-active steps to reduce energy consumption. We hope the following recommendations will help you reduce your energy consumption as well.

Forked River Elementary School's annual heating fuel consumption is favorable compared to other New Jersey K-12 schools benchmarked; however, its EPA *Portfolio Manager* Building Rating and annual electricity consumption present significant opportunities for improvement and savings. We recommend following through with a NJCEP-supported onsite energy audit of the building, covering all systems, plus plug load and the building envelope may help building staff in identifying potential low-cost/no-cost opportunities for improvement. Such improvements may include building heating system schedules, night set-backs, and set points; as well as window seals plus door closers and sweeps. As far as improving electric use, savings could be realized through low-cost measures such as occupancy sensors and no-cost measures such as ensuring that computers and other office equipment is shut down at the end of the day. A 10%-15% improvement on this school's annual electric usage could save the district \$5,600-\$8,400 per year. We also recommend providing a copy of this report to your auditing firm which will enable them to provide the most cost-effective service to you.

We hope you will find these indicators helpful in making informed decisions on how to proceed with improvements to your building. Nevertheless, remote benchmarking analysis is not a substitute for onsite, building energy auditing. Several NJCEP programs available to support your efforts, including energy audits, are described on the following page.

Please call us at 1-866-NJSMART and choose option 4 to find out how these programs can help you save money and improve school conditions.

## **NJCEP Smart Start Buildings Programs:**

The **New Jersey SmartStart Buildings Program** offers different ways to obtain financial incentives for energy-efficiency projects:

**Prescriptive Incentives-** provides preset incentives to install energy-efficient equipment. Eligible gas and electric equipment incentives include: lighting and controls, Unitary HVAC, differential enthalpy economizer controls, motors, variable speed drives, furnaces and hot water heaters, and more.

**Custom Incentives-** Custom Measures allows program participants the opportunity to receive technical assistance to qualify, and receive an incentive for unique energy-efficiency measures that are not on the Prescriptive Equipment Incentive list, but are project/facility specific.

The **Local Government Energy Audit Program** provides incentives for investment grade energy audits to schools and local governments. The program pays 75% of the cost of the audit upon completion, and the remaining 25% of the cost of the audit if efficiency measures are implemented, up to \$100,000 per calendar year.

The **Direct Install Program** is a comprehensive approach that enables a customer to identify and replace inefficient equipment. Systems and equipment eligible for incentives include lighting, controls, refrigeration, HVAC, motors, variable speed drives, natural gas and food service. Delivered through pre-qualified contractors, Direct Install will pay up to 80% of the installed cost of energy efficient upgrades.

The **Pay for Performance Program** is directed at large existing facilities. Customers contract directly with a prequalified program partner. Customers can then earn incentives based on development of an energy reduction plan, installation of efficient measures, and proven energy reduction subject to measurement and verification.