

Solar 4 All Monthly Activity Report - April 2014

Site	Property Owner	Cost per Project (\$k)	NPV of 20 Year Lease Cost (\$k)	EPC Contractor	Site Location Address
Segment 1a					
Linden	PSE&G		N/A	ASP	South Wood Avenue, Linden, NJ 07036
Yardville	PSE&G		N/A	ACE	Broad Street, Hamilton, NJ 08611
Silver Lake	PSE&G		N/A	JFC	410 Silver Lake Avenue, Edison, NJ 08817
Trenton	PSE&G		N/A	SunEdison	500-520 Brunswick Avenue, Trenton, NJ 08638
Central HQ	PSE&G		N/A	Solis (Solyndra)	472 Weston Canal Road, Franklin, NJ 08873
Edison Training	PSE&G		N/A	Henkle & McCoy	234 Pierson Avenue, Edison, NJ 08837
Thorofare	PSE&G		N/A	SunEdison	Jessup Road, Thorofare, NJ 08086
Hackensack	PSE&G		N/A	JFC	194-210 South River Street, Hackensack NJ 07601
Metro/Clifton	PSE&G		N/A	Gloria Solar	150 Circle Ave, Clifton, NJ 07011
S. DivHQ Moorestown	PSE&G		N/A	Vanguard	360 New Albany Road, Moorestown, NJ
Segment 1b					
CPP Bayonne	CenterPoint Properties		\$1,425	ASP	30-100 Pulaski Street, Bayonne, NJ 07002
Matrix - Stults Rd	Matrix Development Group		\$2,267	Pro-Tech	45 Stults Rd, South Brunswick, NJ 08810
Rider	Rider University		\$650	Alteris	2083 Lawrenceville Road, Lawrenceville, NJ 08648
NJMC / Kearny Landfill	NJ Meadowland Commission		\$2,408	Sundurance	932 Bellville Turnpike, Kearny, Hudson County NJ 07032
Mill Creek	Judith Tucci		\$3,231	Juwi	600 Irick Road, Westampton, NJ 08060
Food Bank	Community Food Bank of NJ		\$778	Mercury	31 Evans Terminal, Hillside, NJ 07250
Raritan Center	Summit Associates Inc.		\$1,757	ASP	45 Fernwood Avenue and 110 Fieldcrest Avenue, Edison, NJ 08818
BlackRock-Matrix	Granite South Brunswick, LLC		\$1,827	Pro-Tech	140 Docks Corner Road, South Brunswick, NJ 08810
Segment 1c					
Matrix Bldg A & B	Matrix Development		\$2,222	enXco	1000 & 1050 Amboy Ave, Perth Amboy, NJ 08861
Barringer	Newark Public Schools		\$643	Mercury	90 Parker St, Newark, NJ 07104
Park	Newark Public Schools		\$488	Mercury	120 Manchester Place, Newark, NJ 07104-1704
Camden (NWK)	Newark Public Schools		\$972	ALM	281 & 321 Camden Street Newark, New Jersey 07103
New Central HS	Newark Public Schools		\$500	LB Electric	246 18th Ave, Newark, NJ 07108
Segment 2					
Pole-Attached	PSE&G		N/A	Riggs-Distler	Various

Notes:

"Cost per Project" corresponds to projects that have been placed in service.

"NPV of 20 Year Lease Cost" is derived using an annual discount rate of 5.07%

Regarding Segment 2 (Pole-attached): Riggs Distler is the installation contractor, not an EPC contractor

Solar 4 All Monthly Activity Report - April 2014

Site	Owner location	Type of customer	Status of the installation	Capacity of Project (MW-DC)
Segment 1a				
Linden	80 Park Plaza, Newark, NJ 07102	Utility	Commercial Operation	3.20
Yardville	80 Park Plaza, Newark, NJ 07102	Utility	Commercial Operation	4.30
Silver Lake	80 Park Plaza, Newark, NJ 07102	Utility	Commercial Operation	2.02
Trenton	80 Park Plaza, Newark, NJ 07102	Utility	Commercial Operation	1.26
Central HQ	80 Park Plaza, Newark, NJ 07102	Utility	Commercial Operation	0.92
Edison Training	80 Park Plaza, Newark, NJ 07102	Utility	Commercial Operation	0.71
Thorofare	80 Park Plaza, Newark, NJ 07102	Utility	Commercial Operation	0.72
Hackensack	80 Park Plaza, Newark, NJ 07102	Utility	Commercial Operation	1.05
Metro/Clifton	80 Park Plaza, Newark, NJ 07102	Utility	Commercial Operation	0.73
S. DivHQ Moorestown	80 Park Plaza, Newark, NJ 07102	Utility	Commercial Operation	1.07
Segment 1b				
CPP Bayonne	1808 Swift Drive, Oak Brook, IL 60523-1501	Warehouse	Commercial Operation	1.75
Matrix - Stults Rd	Forsgate Drive CN 4000, Cranbury, NJ 08512	Warehouse	Commercial Operation	2.98
Rider	2083 Lawrenceville Road, Lawrenceville, NJ 08548	University	Commercial Operation	0.74
NJMC / Kearny Landfill	One DeKorte Park Plaza, Lyndhurst, NJ 07071	Landfill	Commercial Operation	3.00
Mill Creek	4 St. Albans Place, Haworth, NJ 07641	Private Landowner	Commercial Operation	3.82
Food Bank	31 Evans Terminal Rd, Hillside, New Jersey 07250	Warehouse	Commercial Operation	1.07
Raritan Center	Raritan Plaza I, Edison, NJ 08818	Warehouse	Commercial Operation	2.22
BlackRock-Matrix	BlackRock, 40 E. 52nd Street, New York, NY 10022	Warehouse	Commercial Operation	2.97
Segment 1c				
Matrix Bldg A & B	Forsgate Drive CN 4000, Cranbury, NJ 08512	Warehouse	Commercial Operation	2.86
Barringer	Newark Public Schools, 2 Cedar Street, Newark NJ 07102-3051	Public Schools	Commercial Operation	0.65
Park	Newark Public Schools, 2 Cedar Street, Newark NJ 07102-3051	Public Schools	Commercial Operation	0.51
Camden (NWK)	Newark Public Schools, 2 Cedar Street, Newark NJ 07102-3051	Public Schools	Commercial Operation	0.91
New Central HS	Newark Public Schools, 2 Cedar Street, Newark NJ 07102-3051	Public Schools	Commercial Operation	0.50
Segment 2				
Pole-Attached	80 Park Plaza, Newark, NJ 07102	Utility	Comm Op / Ongoing Construc	38.37

Solar 4 All Monthly Activity Report - April 2014

Site	Equipment installed (Inverters; Panels)
Segment 1a	
Linden	Six Sunny Central SC500-HE-US inverters; 7,766 Suntech STP280-24/Vd, 3,718 STP275-24/Vd panels
Yardville	Eight Advanced Energy Solaron 3159500-0001A2 inverters, one Solaron 250 inverters; 5,640 Suntech STP270-24/VD, 4,368 STP275-24/VD, 1,512 STP280-24/VD panels
Silver Lake	Three SMA Sunny Central SC 500U, one SC 250U inverters; 3,514 Sharp ND-224UC1, 5,236 ND-U235F1
Trenton	Three Satcon PowerGate Plus PVS-500 inverters; 5,496 Yingli Solar YL230b-29b panels
Central HQ	One Satcon PowerGate Plus PVS-135, one PVS-250, one PVS-375 inverters; 4,180 Solyndra SL-001-182U, 648 Solar World SW240MONO panels
Edison Training	One Satcon PowerGate Plus PVS-500, one PVS-135 inverters; 3,164 Gloria Solar GSM6-225D-E1 panels
Thorofare	One Advanced Energy Solaron-500kW, one Solaron-250kW inverters; 2,618 SunTech STP275-24Vd panels
Hackensack	Two Advanced Energy Solaron-500kW, 4,472 MX Solar MX-60-235 panels
Metro/Clifton	Four Satcon Powergate Plus PVS-75, two PVS-135 inverters; 3,122 Gloria Solar GSM6-235D-E1 panels
S. DivHQ Moorestown	Three Advanced Energy PVP 260 Inverters; one PVP 100 and one PVP 50 Inverter. 4,563 MX60-235 panels
Segment 1b	
CPP Bayonne	Three SMA SC500U inverters; 7,938 Trina Solar TSM-220PA05 panels
Matrix - Stults Rd	Five Solaron 3159500-1001AD inverters; 12,684 Kyocera K0235GX-LPB panels
Rider	Two AEI inverters; 2,640 Suntech STP-280 panels
NJMC / Kearny Landfill	Seven Advanced Energy Solaron inverters 2x500kW, 3x333kW, 2x250kW; 12,506 Kyocera KD240GX-LFB panels
Mill Creek	Seven SMA America SC500U inverters; 29,400 Solar Frontier SF-130-L panels
Food Bank	Two Advanced Energy Solaron 500kW inverters; 4,667 Trina Solar TSM-230PA05 panels
Raritan Center	Four SMA Sunny Central 600US, One SMA SB8000US inverters; 7,098 Hyundai HIS-M230SG, 2,604 HIS-M227SG panels
BlackRock-Matrix	Five AE Solaron 3159000-1001AJ inverters; 12,376 Upsolar UP-M240P panels
Segment 1c	
Matrix Bldg A & B	Five SMA SC500U inverters; 10,395 Suntech STP275-24VD panels
Barringer	Two Satcon PowerGate Plus PVS-250, one PVS-135 inverters; 2,310 Suntech STP280-24VB-1 panels
Park	One Satcon PowerGate Plus PVS-375, one PVS-100, one PVS-75 inverters; 1,440 Sunpower PL-SUN-SPR-305-U, 264 Suntech STP270-24/VB-1 panels
Camden (NWK)	One Solaron 3159000-1000 A1, one Solaron 3159000-1000 A1; 3,264 ET Solar ET-P672280 panels
New Central HS	Two Satcon PowerGate Plus PVS-100, three Satcon Solstice SDMSO100480-LNIU inverters; 1,857 Suntech STP270-24/VB-1 panels
Segment 2	
Pole-Attached	Suntech STP200-18/UB-1, STP205-18/UD, STP210-18/UB-1, STP215-20/WD, STP220-20/WD, STP225-20/WD, Trina Solar TSM-220PA05, TSM-225PA05, TSM-235PA05, TSM-240PA05

Solar 4 All Monthly Activity Report - April 2014

April 2014 Monthly Update

Segment	Energy Produced (MWh AC)	Net Energy Sales (\$)	SREC's Sold	SREC Revenue (\$)	Capacity Sold (MW-days)	Net Capacity Sales (\$)	Business Interruption Insurance Recovery (\$)	Investment (\$)	Program Expenses (\$)	Projects Completed / Seg 2 Panels Installed	MW Installed	Pole-attached Units Communicating
Segment 1a	2,209	\$100,262	-	\$0	147.0	\$26,332	\$0	\$8,536	\$126,525	0	0.0	
Segment 1b	2,594	\$117,710	-	\$0	168.0	\$12,552	\$0	\$362	\$129,737	0	0.0	
Segment 1c	711	\$32,257	-	\$0	54.0	\$10,849	\$0	\$0	\$66,170	0	0.0	
Segment 2	4,222	\$191,584	-	\$0	327.0	\$52,695	\$0	\$141,606	\$222,459	0	0.0	159,114
Program Total	9,736	\$441,813	-	\$0	696.0	\$102,428	\$0	\$150,504	\$544,891		-	

Solar 4 All Year-to-Date Activity Report

Year-to-Date Update through April 2014

Segment	Energy Produced (MWh AC)	Net Energy Sales (\$)	SREC's Sold	SREC Revenue (\$)	Capacity Sold (MW-days)	Net Capacity Sales (\$)	Business Interruption Insurance Recovery (\$)	Investment (\$)	Program Expenses (\$)	Projects Completed / Seg 2 Panels Installed	MW Installed
Segment 1a	5,049	\$396,026	2,639	\$477,760	588.0	\$105,329	\$0	\$245,090	\$839,960	0	0.0
Segment 1b	6,515	\$552,684	3,077	\$555,860	672.0	\$50,207	\$0	(\$16,786)	\$621,219	0	0.0
Segment 1c	1,568	\$126,580	670	\$121,036	216.0	\$43,394	\$0	\$0	\$250,203	0	0.0
Segment 2	12,767	\$1,148,034	6,461	\$1,167,180	1,308.0	\$210,782	\$0	\$172,129	\$1,194,014	0	0.0
YTD Program Total	25,898	\$2,223,324	12,847	\$2,321,835	2,784.0	\$409,712	\$0	\$400,433	\$2,905,396		-

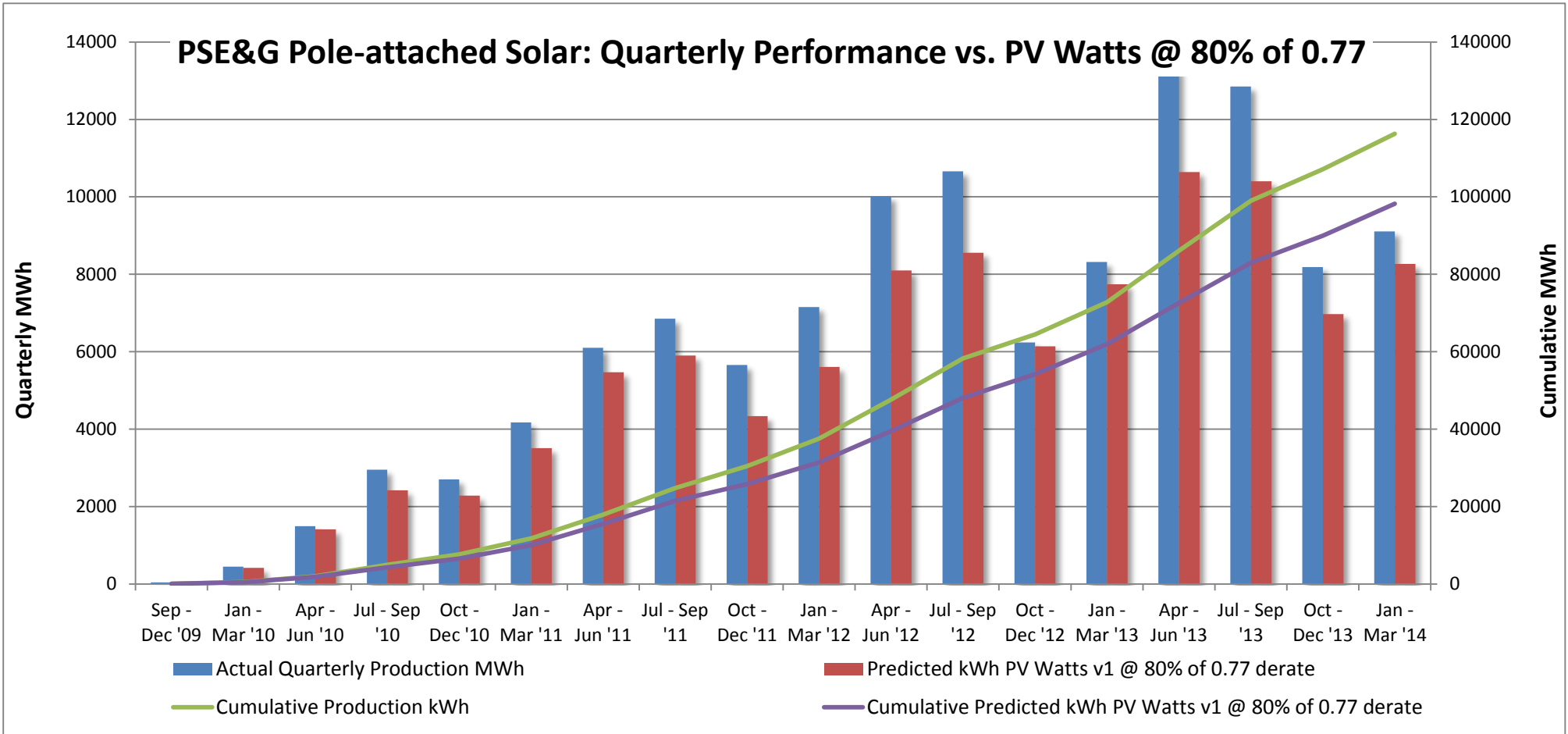
Solar 4 All Program-to-Date Activity Report

Program-to-Date through April 2014

Segment	Energy Produced (MWh AC)	Net Energy Sales (\$)	SREC's Sold	SREC Revenue (\$)	Capacity Sold (MW-days)	Net Capacity Sales (\$)	Business Interruption Insurance Recovery (\$)	Investment (\$)	Program Expenses (\$)	Projects Completed / Seg 2 Panels Installed	MW Installed
Segment 1a	53,175	\$2,721,544	49,514	\$9,175,136	4,560.5	\$457,618	\$320,277	\$89,676,694	\$4,311,627	10	16.0
Segment 1b	56,429	\$2,805,276	51,139	\$7,177,212	3,987.9	\$169,223	\$193,749	\$75,875,159	\$5,916,754	8	18.6
Segment 1c	19,959	\$1,028,032	19,058	\$3,615,451	1,917.0	\$190,623	\$0	\$30,242,822	\$2,558,639	6	5.4
Segment 2	94,214	\$4,905,762	102,492	\$19,982,703	9,194.4	\$881,611	\$0	\$270,343,563	\$7,700,676	174,127	38.4
Program-to-date Total	223,777	\$11,460,613	222,203	\$39,950,503	19,659.8	\$1,699,075	\$514,026	\$466,138,238	\$20,487,697		78.3

Notes:

- "SREC's Sold" and "SREC Revenue" includes vintage year 2011 through 2014 SRECs
- "Net Energy Sales" and "Net Capacity Sales" are tied to calendar month sales reported. These values may not tie to the amounts recorded for financial reporting due to timing of PJM invoices. Net Energy Sales for monthly, YTD, and PTD figures include South Jersey Energy Sales.
- Monthly "Pole-attached Units Installed" & "Pole-attached MW Installed" are preliminary estimates and subject to change. Adjustments to prior months will be reflected in YTD values. Capacity specified in certain previously filed capacity reports represented gross installed capacity. The values shown in the table above account for net installed capacity (total installs minus total removals).
- "Pole Attached Units Communicating" represents the *average, daily* number of panels that communicated during the month.
- The columns "Energy Produced" and "SRECs Sold" do not sync because of the timing of SREC auctions, through which SRECs are sold.
- Business interruption insurance recovery received for lost energy sales and SREC sales due to Superstorm Sandy



Seg1 (Plants):

- Overall performance was favorable for April
- Bayonne Roof Solar - Approximately 21% of facility offline while building owner completes repairs for partial roof failure.

Seg2 (Pole Attached Solar):

- Development of communications network continues.
- Ongoing maintenance of existing installations continues.

PSE&G Pole-Attached -- Summary by Municipality --April 2014		
Municipality	Total Installed	Total kWdc
Allentown Boro	50	10.72
Audubon Boro	479	101.92
Audubon Park Boro	41	8.45
Barrington Boro	340	71.26
Bayonne City	1,680	382.33
Belleville Twp	810	188.61
Bellmawr Boro	993	212.85
Bergenfield Boro	440	99.32
Berkley Heights Twp	5	1.2
Beverly City	264	55.58
Bloomfield Twp	1,060	250.29
Bogota Boro	209	49.22
Bordentown City	69	14.73
Bordentown Twp	800	170.8
Bound Brook Boro	410	93.82
Branchburg Twp	24	2.4
Bridgewater Twp	1,679	375.23
Brooklawn Boro	226	47.55
Burlington City	1,200	254.27
Burlington Twp	1,212	252.05
Caldwell Boro	202	47.75
Camden City	5,569	1,193.54
Carlstadt Boro	661	154.62
Carteret Boro	1,550	330.73
Cedar Grove Twp	570	133.76
Cherry Hill Twp	3,067	651.17
Chesterfield Twp	364	77.78
Cinnaminson Twp	1,210	253.2
Clark Twp	610	135.99
Cliffside Park Boro	286	67.61
Clifton City	3,058	713.87
Collingswood Boro	693	146.4
Cranbury Twp	296	64.61
Cranford Twp	690	154.48
Cresskill Boro	2	0.44
Delanco Twp	294	60.92
Delran Twp	577	118.86
Deptford Twp	1,691	366.45
Dumont Twp	426	95.31
Dunellen Boro	290	65.04
East Amwell Twp	2	0.41
East Brunswick Twp	1,609	347.63
East Newark Boro	37	8.22
East Orange City	1,367	322.37
East Rutherford Twp	436	101.79
Eastampton Twp	313	65.22
Edgewater Boro	110	25.67
Edgewater Park Twp	509	104.68
Edison Twp	4,488	972.59
Elizabeth City	3,248	708.1
Elizabeth City	242	53.2

*Latest installation date 4/10/14

*Installs pending municipal data updates
not included in total

Count of Panels by Municipality

*Net of removals

Panel Report

Page 7 of 16

PSE&G Pole-Attached -- Summary by Municipality --April 2014		
Municipality	Total Installed	Total kWdc
Allentown Boro	50	10.72
Elmwood Park Boro	739	169.67
Emerson Boro	267	59.5
Englewood City	790	182.47
Englewood Cliffs Boro	256	60.65
Essex Fells Twp	59	13.94
Evesham Twp	761	161.58
Ewing Twp	2,385	512.65
Fair Lawn Boro	1,015	225.86
Fairfield Twp Ess	1,018	238.05
Fairview Boro	250	58.6
Fanwood Boro	251	57.5
Fieldsboro Boro	64	14.17
Florence Twp	731	149.69
Fort Lee Boro	655	153.75
Franklin Twp Som	2,679	578.32
Franklin Twp Som	89	20.21
Garfield City	591	137.69
Garwood Boro	240	54.48
Glen Ridge Boro	16	3.84
Glen Rock Boro	142	31.99
Gloucester City	788	168.25
Gloucester Twp	1,698	365.76
Green Brook Twp	300	67.73
Guttenberg Town	25	5.52
Hackensack City	1,423	329.86
Haddon Heights Boro	350	77.26
Haddon Twp	925	198.02
Haddonfield Boro	143	32.19
Hainesport Twp	439	91.73
Haledon Boro	118	26.55
Hamilton Twp Mer	6,375	1,368.68
Harrison Town	274	62.05
Hasbrouck Heights	366	85.74
Haworth Boro	36	8.27
Hawthorne Boro	419	92.34
Highland Park Boro	433	95.2
Hillsborough Twp	1,634	359.29
Hillsborough Twp	1	0.21
Hillsdale Boro	18	4.23
Hillside Twp	666	146.31
Hillside Twp	3	0.62
Hi-Nella Boro	53	11.35
Hoboken City	288	67.98
Hohokus Boro	33	7.35
Hopewell Boro	71	16.63
Hopewell Twp Mer	459	101.71
Irvington Town	1,094	243.39
Jersey City	4,049	920.59
Kearny Town	1	0.24
Kearny Town	1,270	284.91

*Latest installation date 4/10/14

*Installs pending municipal data updates
not included in total

Count of Panels by Municipality

*Net of removals

Panel Report

Page 8 of 16

PSE&G Pole-Attached -- Summary by Municipality --April 2014		
Municipality	Total Installed	Total kWdc
Allentown Boro	50	10.72
Kenilworth Boro	318	70.77
Lawnside Boro	243	52.37
Lawrence Twp Mer	1,430	308.43
Leonia Twp	182	42.62
Lincoln Park Boro	5	1.15
Linden City	2,625	556.61
Little Falls Twp	424	98.92
Little Ferry Boro	457	105.66
Livingston Twp	442	104.59
Lodi Boro	641	148.5
Lumberton Twp	413	85.62
Lyndhurst Twp	880	204.69
Magnolia Boro	397	88.63
Mansfield Twp Bur	545	112.12
Manville Boro	582	131.38
Maple Shade Twp	1,215	255.19
Maplewood Twp	354	79.53
Maywood Boro	211	49.78
Medford Lakes Boro	31	6.54
Medford Twp	560	115.7
Merchantville Boro	197	42.23
Metuchen Boro	528	116.59
Middlesex Twp	764	169.65
Midland Park Boro	79	18.63
Millburn Twp	2	0.48
Millstone Boro	29	6.3
Milltown Boro	5	1.15
Monroe Twp Mid	3	0.63
Montclair Twp	723	172.49
Montgomery Twp	19	4.25
Montgomery Twp	731	160.73
Moonachie Boro	361	82.31
Moorestown Twp	1,014	214.11
Mount Ephraim Boro	344	73.04
Mount Holly Twp	545	115.2
Mount Laurel Twp	1,008	210.64
Mountainside Boro	300	68.97
National Park Boro	349	76.3
New Brunswick City	1,669	356.33
New Milford Boro	290	65.65
Newark City	7,632	1,710.42
North Arlington Boro	509	117.53
North Bergen Twp	1,262	294.93
North Brunswick Twp	1,753	380.42
North Caldwell Twp	177	40.9
North Haledon Boro	46	10.6
North Hanover Twp	2	0.48
North Plainfield Boro	575	129.38
Nutley Town	564	132.82
Oaklyn Boro	274	57.82

*Latest installation date 4/10/14

*Installs pending municipal data updates
not included in total

Count of Panels by Municipality

*Net of removals

Panel Report

Page 9 of 16

PSE&G Pole-Attached -- Summary by Municipality --April 2014		
Municipality	Total Installed	Total kWdc
Allentown Boro	50	10.72
Old Tappan Boro	11	2.64
Oradell Boro	98	21.7
Orange City	583	138.29
Palisades Park Boro	415	97.89
Palmyra Boro	418	87.25
Paramus Boro	742	167.82
Park Ridge Boro	0	0
Passaic City	1,034	241.11
Paterson City	3,222	732.83
Paulsboro Boro	6	1.24
Pemberton Twp	107	21.92
Pennington Boro	79	18.38
Pennsauken Twp	3,359	703.85
Perth Amboy City	1,508	326.83
Piscataway Twp	2,412	516.33
Plainfield City	1,551	343.9
Plainsboro Twp	226	49.52
Princeton Boro	44	10.01
Princeton Twp	128	27.83
Prospect Park Boro	109	24.44
Rahway City	1,419	319.01
Raritan Boro	286	62.47
Ridgefield Boro	347	81.38
Ridgefield Park Village	383	90.71
Ridgewood Village	132	29.74
River Edge Boro	264	60.59
River Vale Twp	11	2.42
Riverside Boro	561	116.55
Riverton Boro	108	23.2
Rochelle Park Twp	257	58.85
Rocky Hill Boro	15	3.29
Roseland Boro	141	33.58
Roselle Boro	640	140.99
Roselle Park Boro	309	71.06
Runnemede Boro	533	115.27
Rutherford Boro	215	47.73
Saddle Brook Twp	7	1.63
Saddle Brook Twp	304	69.27
Saddle River Boro	9	1.92
Scotch Plains Twp	652	147.94
Secaucus Town	995	231.75
Somerdale Boro	377	81.35
Somerville Boro	724	158.23
South Bound Brook Boro	197	43.32
South Brunswick Twp	1,298	281.16
South Brunswick Twp	436	93.46
South Hackensack Twp	222	51.72
South Orange Village Twp	102	23.97
South Plainfield Boro	2,171	477.89
Southampton Twp	692	141.55

*Latest installation date 4/10/14

*Installs pending municipal data updates
not included in total

Count of Panels by Municipality

*Net of removals

Panel Report

Page 10 of 16

PSE&G Pole-Attached -- Summary by Municipality --April 2014		
Municipality	Total Installed	Total kWdc
Allentown Boro	50	10.72
Springfield Twp Bur	470	97.76
Springfield Twp Uni	29	6.61
Tavistock Boro	1	0.22
Teaneck Twp	724	165.94
Tenafly Boro	307	70.1
Teterboro Boro	168	39.39
Totowa Boro	728	166.69
Trenton City	4,593	997.97
Union City	27	6.28
Union Twp Uni	2,046	453.3
Upper Freehold Twp	76	16.26
Verona Twp	184	43.96
Voorhees Twp	307	66.8
Waldwick Boro	158	35.32
Wallington Boro	275	64.16
Wallington Boro	5	1.17
Warren Twp	49	10.31
Washington Twp Ber	75	16.75
Washington Twp Glo	37	8
Washington Twp Mer	352	75.04
Watchung Boro	328	72.99
Wayne Twp	1,295	296.13
Weehawken Twp	3	0.72
West Caldwell Twp	514	121.45
West Deptford Twp	1	0.2
West Deptford Twp	1,711	367.73
West New York Town	31	7.02
West Orange Twp	1,030	240.91
West Paterson Boro	303	69.83
West Windsor Twp	653	142.34
Westampton Twp	436	91.42
Westfield Town	1,142	259.53
Westville Boro	514	108.78
Westwood Boro	218	48.08
Willingboro Twp	658	133.79
Winfield Twp	15	3.07
Woodbridge Twp	5,659	1,216.54
Woodbury City	929	202.12
Woodbury Heights Boro	271	58.81
Woodcliff Lakes Boro	67	15.78
Woodlynne Boro	148	31.15
Wood-Ridge Boro	337	79.44
Wyckoff Twp	49	11.2
Total	173,699	38276.2

*Latest installation date 4/10/14

*Installs pending municipal data updates
not included in total

Count of Panels by Municipality

*Net of removals

Panel Report

Page 11 of 16

PSE&G Pole-Attached -- Count of Aggregators by Municipality -- April 2014

Municipality	Count of Aggregators Installed through April 2014
Allentown Boro	3
Audubon Boro	7
Barrington Boro	7
Bayonne City	23
Belleville Twp	12
Bellmawr Boro	19
Bergenfield Boro	6
Beverly City	3
Bloomfield Twp	16
Bogota Boro	3
Bordentown City	2
Bordentown Twp	13
Bound Brook Boro	6
Branchburg Twp	1
Bridgewater Twp	44
Brooklawn Boro	4
Burlington City	17
Burlington Twp	17
Caldwell Boro	3
Camden City	65
Carlstadt Boro	12
Carteret Boro	20
Cedar Grove Twp	8
Cherry Hill Twp	57
Chesterfield Twp	14
Cinnaminson Twp	19
Clark Twp	11
Cliffside Park Boro	3
Clifton City	40
Collingswood Boro	10
Cranbury Twp	7
Cranford Twp	11
Delanco Twp	3
Delran Twp	10
Deptford Twp	32
Dumont Twp	6
Dunellen Boro	4
East Brunswick Twp	32
East Newark Boro	1
East Orange City	17
East Rutherford Twp	7
Eastampton Twp	6
Edgewater Boro	6
Edgewater Park Twp	7
Edison Twp	79
Elizabeth City	43
Elmwood Park Boro	11
Emerson Boro	7
Englewood City	17
Englewood Cliffs Boro	6

PSE&G Pole-Attached -- Count of Aggregators by Municipality -- April 2014

Municipality	Count of Aggregators Installed through April 2014
Essex Fells Twp	2
Evesham Twp	14
Ewing Twp	36
Fair Lawn Boro	17
Fairfield Twp Ess	18
Fairview Boro	5
Fanwood Boro	5
Fieldsboro Boro	1
Florence Twp	12
Fort Lee Boro	12
Franklin Twp Som	61
Garfield City	10
Garwood Boro	3
Glen Rock Boro	7
Gloucester City	10
Gloucester Twp	22
Green Brook Twp	6
Guttenberg Town	1
Hackensack City	23
Haddon Heights Boro	4
Haddon Twp	13
Haddonfield Boro	6
Hainesport Twp	3
Haledon Boro	1
Hamilton Twp Mer	84
Harrison Town	5
Hasbrouck Heights	4
Haworth Boro	1
Hawthorne Boro	10
Highland Park Boro	9
Hillsborough Twp	37
Hillsdale Boro	2
Hillside Twp	11
Hi-Nella Boro	1
Hoboken City	6
Hohokus Boro	3
Hopewell Boro	1
Hopewell Twp Mer	20
Irvington Town	17
Jersey City	62
Kearny Town	18
Kenilworth Boro	5
Lawnside Boro	4
Lawrence Twp Mer	32
Leonia Twp	2
Linden City	36
Little Falls Twp	9
Little Ferry Boro	8
Livingston Twp	24
Lodi Boro	11

PSE&G Pole-Attached -- Count of Aggregators by Municipality -- April 2014

Municipality	Count of Aggregators Installed through April 2014
Lumberton Twp	12
Lyndhurst Twp	12
Magnolia Boro	5
Mansfield Twp Bur	16
Manville Boro	9
Maple Shade Twp	13
Maplewood Twp	6
Maywood Boro	7
Medford Lakes Boro	3
Medford Twp	21
Merchantville Boro	1
Metuchen Boro	9
Middlesex Twp	9
Midland Park Boro	7
Millstone Boro	1
Montclair Twp	18
Montgomery Twp	31
Moonachie Boro	5
Moorestown Twp	20
Mount Ephraim Boro	4
Mount Holly Twp	9
Mount Laurel Twp	25
Mountainside Boro	7
National Park Boro	6
New Brunswick City	24
New Milford Boro	5
Newark City	111
North Arlington Boro	9
North Bergen Twp	23
North Brunswick Twp	24
North Caldwell Twp	9
North Haledon Boro	3
North Plainfield Boro	7
Nutley Town	8
Oaklyn Boro	4
Old Tappan Boro	1
Oradell Boro	3
Orange City	9
Palisades Park Boro	6
Palmyra Boro	7
Paramus Boro	22
Passaic City	16
Paterson City	49
Pemberton Twp	5
Pennington Boro	4
Pennsauken Twp	50
Perth Amboy City	26
Piscataway Twp	51
Plainfield City	26
Plainsboro Twp	9

PSE&G Pole-Attached -- Count of Aggregators by Municipality -- April 2014

Municipality	Count of Aggregators Installed through April 2014
Princeton Boro	5
Princeton Twp	6
Prospect Park Boro	1
Rahway City	17
Raritan Boro	5
Ridgefield Boro	4
Ridgefield Park Village	5
Ridgewood Village	9
River Edge Boro	5
River Vale Twp	1
Riverside Boro	5
Riverton Boro	2
Rochelle Park Twp	5
Rocky Hill Boro	2
Roseland Boro	10
Roselle Boro	11
Roselle Park Boro	5
Runnemede Boro	8
Rutherford Boro	8
Saddle Brook Twp	7
Scotch Plains Twp	14
Secaucus Town	17
Somerdale Boro	5
Somerville Boro	8
South Bound Brook Boro	2
South Brunswick Twp	43
South Hackensack Twp	3
South Orange Village Twp	5
South Plainfield Boro	42
Southampton Twp	19
Springfield Twp Bur	12
Teaneck Twp	16
Tenafly Boro	13
Teterboro Boro	3
Totowa Boro	12
Trenton City	51
Undefined Municipality	0
Union City	2
Union Twp Uni	29
Upper Freehold Twp	2
Verona Twp	3
Voorhees Twp	6
Waldwick Boro	10
Wallington Boro	2
Warren Twp	4
Washington Twp Ber	6
Washington Twp Glo	1
Washington Twp Mer	6
Watchung Boro	13
Wayne Twp	55

PSE&G Pole-Attached -- Count of Aggregators by Municipality -- April 2014

Municipality	Count of Aggregators Installed through April 2014
West Caldwell Twp	8
West Deptford Twp	29
West New York Town	2
West Orange Twp	26
West Paterson Boro	9
West Windsor Twp	21
Westampton Twp	10
Westfield Town	26
Westville Boro	5
Westwood Boro	5
Willingboro Twp	16
Woodbridge Twp	93
Woodbury City	13
Woodbury Heights Boro	3
Woodcliff Lakes Boro	4
Woodlynne Boro	2
Wood-Ridge Boro	4
Wyckoff Twp	5
<i>TOTAL</i>	3,064