



Local Government Energy Audit Report

R. Barbara Gitenstein Library

May 6, 2021

Prepared for:

The College of New Jersey
2000 Pennington Road
Ewing, NJ 08628

Prepared by:

TRC
900 Route 9 North
Woodbridge, NJ 07095

Disclaimer

The goal of this audit report is to identify potential energy efficiency opportunities, help prioritize specific measures for implementation, and provide information about financial incentives that may be available. Most energy conservation measures have received preliminary analysis of feasibility that identifies expected ranges of savings and costs. This level of analysis is usually considered sufficient to establish a basis for further discussion and to help prioritize energy measures.

TRC reviewed the energy conservation measures and estimates of energy savings for technical accuracy. Actual, achieved energy savings depend on behavioral factors and other uncontrollable variables and, therefore, estimates of final energy savings are not guaranteed. TRC and the New Jersey Board of Public Utilities (NJBPU) shall in no event be liable should the actual energy savings vary.

TRC bases estimated material and labor costs primarily on RS Means cost manuals as well as on our experience at similar facilities. This approach is based on standard cost estimating manuals and is vendor neutral. Cost estimates include material and labor pricing associated with one for one equipment replacements. Cost estimates do not include demolition or removal of hazardous waste. The actual implementation costs for energy savings projects are anticipated to be significantly higher based on the specific conditions at your site(s). We strongly recommend that you work with your design engineer or contractor to develop actual project costs for your specific scope of work for the installation of high efficiency equipment. We encourage you to obtain multiple estimates when considering measure installations. Actual installation costs can vary widely based on selected products and installers. TRC and NJBPU do not guarantee cost estimates and shall in no event be held liable should actual installed costs vary from these material and labor estimates.

New Jersey's Clean Energy Program (NJCEP) incentive values provided in this report are estimates based on program information available at the time of the report. Incentive levels are not guaranteed. The NJBPU reserves the right to extend, modify, or terminate programs without prior notice. Please review all available program incentives and eligibility requirements prior to selecting and installing any energy conservation measures.

The customer and their respective contractor(s) are responsible to implement energy conservation measures in complete conformance with all applicable local, state, and federal requirements.

Copyright ©2021 TRC. All rights reserved.

Reproduction or distribution of the whole, or any part of the contents of this document without written permission of TRC is prohibited. Neither TRC nor any of its employees makes any warranty, express or implied, or assumes any legal liability or responsibility for the accuracy, completeness, or usefulness of any data, information, method, product or process disclosed in this document, or represents that its use will not infringe upon any privately-owned rights, including but not limited to, patents, trademarks or copyrights.

Table of Contents

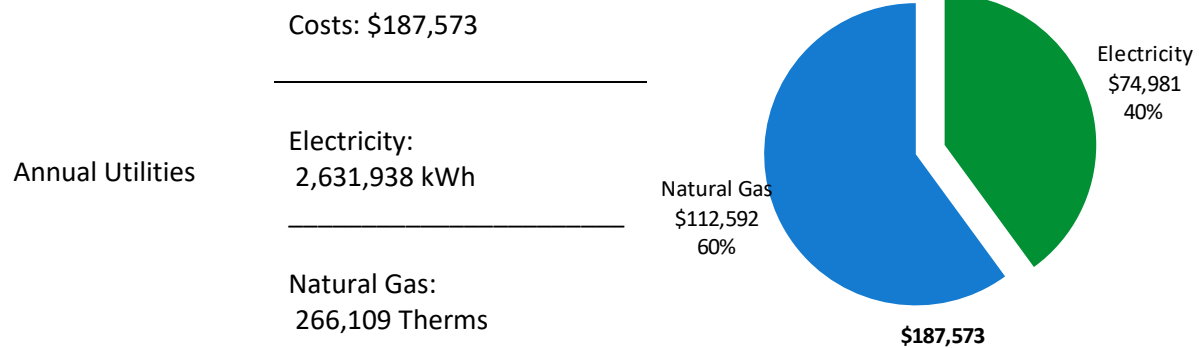
1	Executive Summary.....	1
1.1	Planning Your Project	4
	Pick Your Installation Approach	4
	More Options from Around the State	6
2	Existing Conditions.....	7
2.1	Site Overview.....	7
2.2	Building Occupancy	8
2.3	Building Envelope	8
2.4	Lighting Systems.....	10
2.5	Air Handling Systems.....	13
	Unitary Electric HVAC Equipment	13
	Air Distribution System – Air Handling Units (AHUs)	13
2.6	Steam System	15
2.7	Chilled Water Systems.....	17
2.8	Building Energy Management Systems (EMS)	18
2.9	Domestic Hot Water	18
2.10	Refrigeration.....	20
2.11	Plug Load & Vending Machines.....	20
2.12	Water-Using Systems	22
3	Energy Use and Costs	23
3.1	Electricity.....	25
3.2	Natural Gas.....	26
3.3	Benchmarking.....	27
	Tracking Your Energy Performance.....	28
4	Energy Conservation Measures	29
4.1	Lighting	32
	ECM 1: Install LED Fixtures	32
	ECM 2: Retrofit Fixtures with LED Lamps	32
4.2	Lighting Controls.....	33
	ECM 3: Install Occupancy Sensor Lighting Controls	33
	ECM 4: Install High/Low Lighting Controls	34
4.3	Motors.....	35
	ECM 5: Premium Efficiency Motors	35
4.4	Variable Frequency Drives (VFD).....	36
	ECM 6: Install VFDs on Constant Volume (CV) Fans.....	36
4.5	Unitary HVAC.....	36
	ECM 7: Install High Efficiency Heat Pumps.....	36

4.6	Food Service & Refrigeration Measures.....	37
	ECM 8: Vending Machine Control	37
4.7	Custom Measures.....	37
	ECM 9: Retro-Commissioning Study.....	37
	ECM 10: Sub Metering	38
5	Energy Efficient Best Practices	39
	Energy Tracking with ENERGY STAR® Portfolio Manager®	39
	Doors and Windows	39
	Lighting Maintenance.....	39
	Lighting Controls	40
	Motor Maintenance	40
	AC System Evaporator/Condenser Coil Cleaning	40
	HVAC Filter Cleaning and Replacement	40
	Compressed Air System Maintenance	40
	Plug Load Controls.....	41
	Water Conservation	41
	Procurement Strategies	41
6	On-site Generation	42
6.1	Solar Photovoltaic	43
6.2	Combined Heat and Power	45
7	Project Funding and Incentives.....	46
7.1	SmartStart	47
7.2	Direct Install	48
7.3	Pay for Performance - Existing Buildings.....	49
7.4	Combined Heat and Power	50
7.5	Energy Savings Improvement Program	51
7.6	Transition Incentive (TI) Program.....	52
8	Project Development	53
9	Energy Purchasing and Procurement Strategies	54
9.1	Retail Electric Supply Options.....	54
9.2	Retail Natural Gas Supply Options	54
	Appendix A: Equipment Inventory & Recommendations	A-1
	Appendix B: ENERGY STAR® Statement of Energy Performance.....	B-1
	Appendix C: Glossary	C-1

1 EXECUTIVE SUMMARY

The New Jersey Board of Public Utilities (NJBPB) has sponsored this Local Government Energy Audit (LGEA) report for R. Barbara Gitenstein Library. This report provides you with information about your facility's energy use, identifies energy conservation measures (ECMs) that can reduce your energy use, and provides information and assistance to help make changes in your facility. TRC conducted this study as part of a comprehensive effort to assist New Jersey school districts and local governments in controlling their energy costs and to help protect our environment by reducing statewide energy consumption.

BUILDING PERFORMANCE REPORT



ENERGY STAR® Benchmarking Score	N/A (1-100 scale)	A standard energy use benchmark is not available for this facility type. This report contains suggestions about how to improve building performance and reduce energy costs.
------------------------------------	----------------------	--

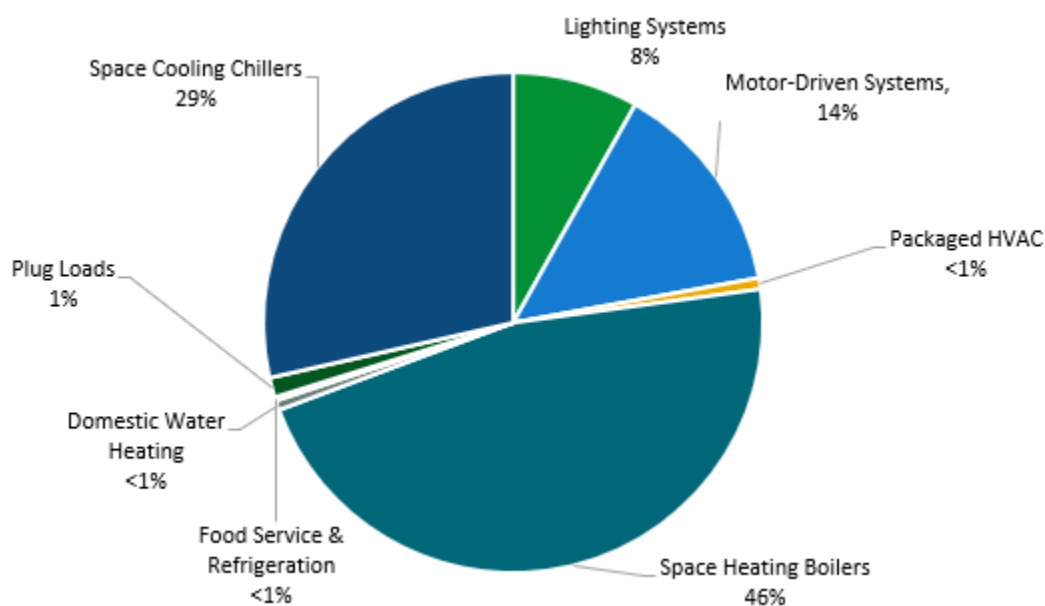


Figure 1 - Energy Use by System

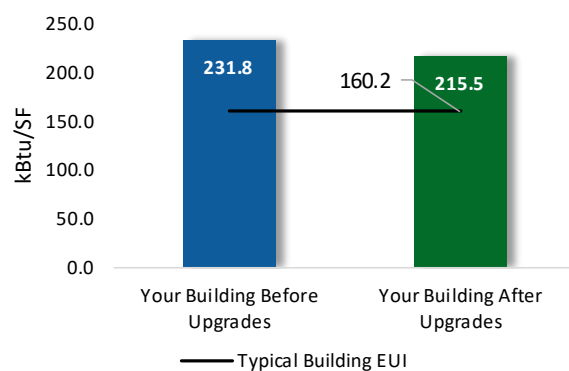
POTENTIAL IMPROVEMENTS



This energy audit considered a range of potential energy improvements in your building. Costs and savings will vary between improvements. Presented below are two potential scopes of work for your consideration.

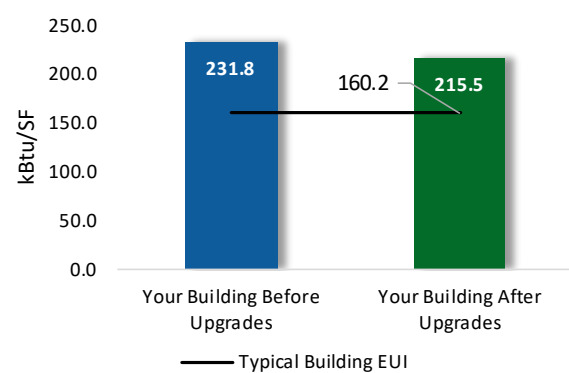
Scenario 1: Full Package (all evaluated measures)

Installation Cost	\$277,592	250.0
Potential Rebates & Incentives ¹	\$37,839	200.0
Annual Cost Savings	\$96,396	150.0
Annual Energy Savings	Electricity: 646,547 kWh Natural Gas: 3,019 Therms	100.0
Greenhouse Gas Emission Savings	343 Tons	50.0
Simple Payback	2.5 Years	0.0
Site Energy Savings (all utilities)	7%	



Scenario 2: Cost Effective Package²

Installation Cost	\$277,592	250.0
Potential Rebates & Incentives	\$37,839	200.0
Annual Cost Savings	\$96,396	150.0
Annual Energy Savings	Electricity: 646,547 kWh Natural Gas: 3,019 Therms	100.0
Greenhouse Gas Emission Savings	343 Tons	50.0
Simple Payback	2.5 Years	0.0
Site Energy Savings (all utilities)	7%	



On-site Generation Potential

Photovoltaic	High
Combined Heat and Power	None

¹ Incentives are based on current SmartStart Prescriptive incentives. Other program incentives may apply.

² A cost-effective measure is defined as one where the simple payback does not exceed two-thirds of the expected proposed equipment useful life. Simple payback is based on the net measure cost after potential incentives.

#	Energy Conservation Measure	Cost Effective?	Annual Electric Savings (kWh)	Peak Demand Savings (kW)	Annual Fuel Savings (MMBtu)	Annual Energy Cost Savings (\$)	Estimated M&L Cost (\$)	Estimated Incentive (\$)*	Estimated Net M&L Cost (\$)	Simple Payback Period (yrs)**	CO ₂ e Emissions Reduction (lbs)
Lighting Upgrades			441,199	43.8	-101	\$64,482	\$102,817	\$25,994	\$76,823	1.2	432,490
ECM 1	Install LED Fixtures	Yes	8,620	0.7	-2	\$1,261	\$3,320	\$340	\$2,980	2.4	8,488
ECM 2	Retrofit Fixtures with LED Lamps	Yes	432,579	43.1	-99	\$63,221	\$99,497	\$25,654	\$73,843	1.2	424,002
Lighting Control Measures			107,470	10.5	-25	\$15,706	\$59,383	\$10,670	\$48,713	3.1	105,327
ECM 3	Install Occupancy Sensor Lighting Controls	Yes	103,062	10.1	-24	\$15,062	\$54,658	\$7,070	\$47,588	3.2	101,007
ECM 4	Install High/Low Lighting Controls	Yes	4,408	0.4	-1	\$644	\$4,725	\$3,600	\$1,125	1.7	4,320
Motor Upgrades			19,425	2.5	0	\$2,858	\$29,793	\$0	\$29,793	10.4	19,561
ECM 5	Premium Efficiency Motors	Yes	19,425	2.5	0	\$2,858	\$29,793	\$0	\$29,793	10.4	19,561
Variable Frequency Drive (VFD) Measures			11,881	1.9	0	\$1,748	\$13,687	\$325	\$13,362	7.6	11,964
ECM 6	Install VFDs on Constant Volume (CV) Fans	Yes	11,881	1.9	0	\$1,748	\$13,687	\$325	\$13,362	7.6	11,964
Unitary HVAC Measures			8,694	6.2	0	\$1,279	\$13,527	\$800	\$12,727	10.0	8,755
ECM 7	Install High Efficiency Heat Pumps	Yes	8,694	6.2	0	\$1,279	\$13,527	\$800	\$12,727	10.0	8,755
Food Service & Refrigeration Measures			1,209	0.1	0	\$178	\$230	\$50	\$180	1.0	1,217
ECM 8	Vending Machine Control	Yes	1,209	0.1	0	\$178	\$230	\$50	\$180	1.0	1,217
Custom Measures			56,669	0.0	427	\$10,145	\$58,155	\$0	\$58,155	5.7	107,103
ECM 9	Retro-Commissioning Study	Yes	30,349	0.0	327	\$5,848	\$46,055	\$0	\$46,055	7.9	68,847
ECM 10	Sub Metering	Yes	26,319	0.0	100	\$4,297	\$12,100	\$0	\$12,100	2.8	38,257
TOTALS (COST EFFECTIVE MEASURES)			646,547	65.1	302	\$96,396	\$277,592	\$37,839	\$239,753	2.5	686,418
TOTALS (ALL MEASURES)			646,547	65.1	302	\$96,396	\$277,592	\$37,839	\$239,753	2.5	686,418

* - All incentives presented in this table are based on NJ SmartStart equipment incentives and assume proposed equipment meets minimum performance criteria for that program.

** - Simple Payback Period is based on net measure costs (i.e. after incentives).

Figure 2 – Evaluated Energy Improvements

For more detail on each evaluated energy improvement and a break out of cost-effective improvements, see **Section 4: Energy Conservation Measures**.

1.1 Planning Your Project

Careful planning makes for a successful energy project. When considering this scope of work, you will have some decisions to make, such as:

- ◆ How will the project be funded and/or financed?
- ◆ Is it best to pursue individual ECMs, groups of ECMs, or use a comprehensive approach where all ECMs are installed together?
- ◆ Are there other facility improvements that should happen at the same time?

Pick Your Installation Approach

New Jersey's Clean Energy Programs give you the flexibility to do a little or a lot. Rebates, incentives, and financing are available to help reduce both your installation costs and your energy bills. If you are planning to take advantage of these programs, make sure to review incentive program guidelines before proceeding. This is important because in most cases you will need to submit applications for the incentives before purchasing materials or starting installation.

The potential ECMs identified for this building likely qualify for multiple incentive and funding programs. Based on current program rules and requirements, your measures are likely to qualify for the following programs:

Energy Conservation Measure		SmartStart	Direct Install	Pay For Performance
ECM 1	Install LED Fixtures	X		X
ECM 2	Retrofit Fixtures with LED Lamps	X		X
ECM 3	Install Occupancy Sensor Lighting Controls	X		X
ECM 4	Install High/Low Lighting Controls	X		X
ECM 5	Premium Efficiency Motors	X		X
ECM 6	Install VFDs on Constant Volume (CV) Fans	X		X
ECM 7	Install High Efficiency Heat Pumps	X		X
ECM 8	Vending Machine Control	X		X
ECM 9	Retro-Commissioning Study			
ECM 10	Sub Metering			

Figure 3 – Funding Options



New Jersey's Clean Energy Programs At-A-Glance

	SmartStart Flexibility to install at your own pace	Direct Install Turnkey installation	Pay for Performance Whole building upgrades
Who should use it?	Buildings installing individual measures or small group of measures.	Small to mid-size facilities that can bundle multiple measures together. Average peak demand should be below 200 kW. Not suitable for significant building shell issues.	Mid to large size facilities looking to implement as many measures as possible at one time. Peak demand should be over 200 kW.
How does it work?	Use in-house staff or your preferred contractor.	Pre-approved contractors pass savings along to you via reduced material and labor costs.	Whole-building approach to energy upgrades designed to reduce energy use by at least 15%. The more you save, the higher the incentives.
What are the Incentives?	Fixed incentives for specific energy efficiency measures.	Incentives pay up to 70% of eligible costs, up to \$125,000 per project. You pay the remaining 30% directly to the contractor.	Incentives are paid out in three installments. The first installment is meant to help offset the costs of the initial engineering study. The subsequent incentives are paid based on the level of energy savings up to 50% of the total project cost. See Section 7.3 for all incentive details.
How do I participate?	Submit an application for the specific equipment to be installed.	Contact a participating contractor in your region.	Contact a pre-qualified Partner to develop your Energy Reduction Plan and set your energy savings targets.

Take the next step by visiting www.njcleanenergy.com for program details, applications, and to contact a qualified contractor.

Individual Measures with SmartStart

For facilities wishing to pursue only selected individual measures (or planning to phase implementation of selected measures over multiple years), incentives are available through the SmartStart program. To participate, you can use internal resources or an outside firm or contractor to perform the final design of the ECM(s) and install the equipment. Program pre-approval is required for some SmartStart incentives, so only after receiving pre-approval should you proceed with ECM installation.

Turnkey Installation with Direct Install

The Direct Install program provides turnkey installation of multiple measures through an authorized network of participating contractors. This program can provide substantially higher incentives than SmartStart, up to 70 percent of the cost of selected measures. Direct Install contractors will assess and verify individual measure eligibility and, in most cases, they perform the installation work. The Direct Install program is available to sites with an average peak demand of less than 200 kW.

Whole Building Approach with Pay for Performance

Pay for Performance can be a good option for medium to large sized facilities to achieve deep energy savings. Pay for Performance allows you to install as many measures as possible under a single project as well as address measures that may not qualify for other programs. Many facilities pursuing an Energy Savings Improvement Program (ESIP) loan also use this program. Pay for Performance works for larger customers with a peak demand over 200 kW. The minimum installed scope of work must include at least two unique measures resulting in at least 15 percent energy savings, where lighting cannot make up the majority of the savings.

More Options from Around the State

Financing and Planning Support with the Energy Savings Improvement Program (ESIP)

For larger facilities with limited capital availability to implement ECMs, project financing may be available through the ESIP. Supported directly by the NJBPU, ESIP provides government agencies with project development, design, and implementation support services, as well as, attractive financing for implementing ECMs. You have already taken the first step as an LGEA customer, because this report is required to participate in ESIP.

Resiliency with Return on Investment through Combined Heat & Power (CHP)

The CHP program provides incentives for combined heat and power (aka cogeneration) and waste heat to power projects. Combined heat and power systems generate power on-site and recover heat from the generation system to meet on-site thermal loads. Waste heat to power systems use waste heat to generate power. You will work with a qualified developer who will design a system that meets your building's heating and cooling needs.

Ongoing Electric Savings with Demand Response

The Demand Response Energy Aggregator program reduces electric loads at commercial facilities when wholesale electricity prices are high or when the reliability of the electric grid is threatened due to peak power demand. By enabling commercial facilities to reduce electric demand during times of peak demand, the grid is made more reliable and overall transmission costs are reduced for all ratepayers. Curtailment service providers provide regular payments to medium and large consumers of electric power for their participation in demand response (DR) programs. Program participation is voluntary, and facilities receive payments regardless of whether they are called upon to curtail their load during times of peak demand.

2 EXISTING CONDITIONS

The New Jersey Board of Public Utilities (NJBPU) has sponsored this Local Government Energy Audit (LGEA) Report for R. Barbara Gitenstein Library. This report provides information on how your facility uses energy, identifies energy conservation measures (ECMs) that can reduce your energy use, and provides information and assistance to help you implement the ECMs. This report also contains valuable information on financial incentives from New Jersey's Clean Energy Program (NJCEP) for implementing ECMs.

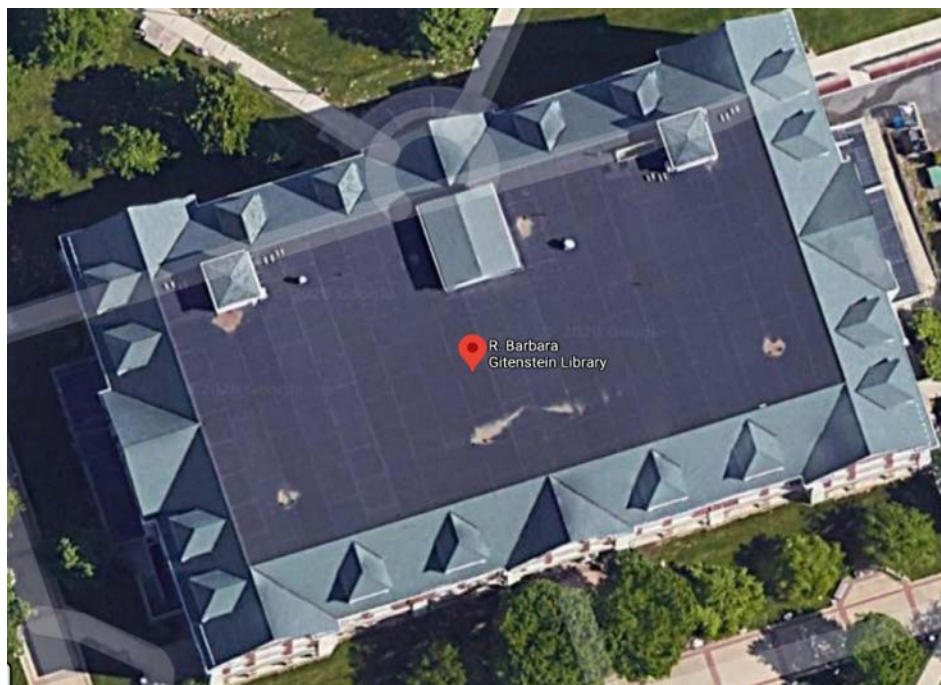
TRC conducted this study as part of a comprehensive effort to assist New Jersey educational and local government facilities in controlling energy costs and protecting our environment by offering a wide range of energy management options and advice.

2.1 Site Overview

On October 6, 2020, TRC performed an energy audit at R. Barbara Gitenstein Library located in Ewing, New Jersey. TRC met with Benedictus Paraan to review the facility operations and help focus our investigation on specific energy-using systems.

The R. Barbara Gitenstein Library is a 5-story, 153,515 square foot building built in 2005. The building is situated on the quad just east of Green Hall, directly between West Hall and Eickhoff Hall. It houses traditional library collections and services, and provides 26 group study rooms, a café, a late-night study area, and a 105-seat multi-purpose auditorium.

Lighting is mainly provided by linear fluorescent T8 fixtures. The facility uses steam and chilled water supplied from the Power House/Cogen building or Central Utilities Plant (CUP). There are 10 air handling units (AHUs) equipped with hot water and chilled water coils that provide heating and cooling to spaces. The building has a diesel generator to provide emergency backup electricity. There are three passenger elevators in the building.



Aerial View - R. Barbara Gitenstein Library

2.2 Building Occupancy

The Gitenstein Library is available to students residing on campus or in the local area, and functions primarily as study space. The building operates on a 12-month schedule. It is open Monday to Sunday from 7:00 AM until approximately 10:00 PM. Weekend and summer occupancies vary. During a typical day, the facility is occupied by approximately 1,487 students and 139 staff. It should be noted that the energy and economic analysis for this building is based on the use of the building during the utility billing period, and that results will vary based on changes to building use patterns.

Building Name	Weekday/Weekend	Operating Schedule
R. Barbara Gitenstein Library	Weekday	7:00 AM - 10:00 PM
	Weekend	Varies
	Summer	Varies

Figure 4 - Building Occupancy Schedule

2.3 Building Envelope

The Gitenstein Library is a five-floor building including a basement. Building walls are made of concrete block over structural steel with brick veneer façade. The main center flat roof is supported with steel trusses and a metal deck. It is finished with a thermoplastic black membrane. The main roof is surrounded with pitched clay tile roof sections located along the building perimeter. The roofing systems are in good condition.

The windows are double glazed and have aluminum frames with a fiberglass thermal break. The glass-to-frame seals are in good condition. The fixed windows weather seals are in good condition, showing no signs of outside air infiltration. The entrance doors are fully glazed with aluminum frames. The exit doors are made of metal frames in good condition. Overall, the building envelop appears in good condition.



Building Walls



Center Flat Roof & Perimeter Pitched Roof



Windows & Entrance Doors

2.4 Lighting Systems

The primary interior lighting system uses 32-Watt linear fluorescent T8 lamps that use electronic ballasts. There are also many compact fluorescent lamps (CFLs). Fixture types include 1- 2-lamp, 4-foot long troffer, recessed, surface mounted, and pendant fixtures. The CFLs are used in combination with linear fluorescent T8 lamps in many spaces. CFL fixture types include recessed cans, wall mounted, or pendant style units. The typical wattages are 13, 24, and 26 Watts. The multi-purpose room (auditorium) fixtures have halogen incandescent lamps. Exit signs throughout the building are LED fixtures. All light fixtures are in good condition.

Interior lighting levels were generally sufficient. Sample light level readings for some specific areas are provided below:

- Room 218, lit by 2x4 troffers with two T8 tubes, had an average of 34 foot-candles (FC).
- Room 301 (Group Study Room), lit by 4-foot troffers with one and two T8 tubes, was measured at an average of 49 FC.
- Newspapers reading area, lit by 4-foot troffers with two and three T8 tubes, had readings that averaged 49 FC.
- 2nd floor Periodicals, lit by 4-foot pendant with T8 tubes, registered an average of 62 FC.
- For the 2nd floor hallway, lit by 4-foot troffers with two T8 tubes, an average of 27FC was measured.

Lighting fixtures in some spaces are controlled by manual wall switches while the offices and group study areas have fixtures that are controlled by occupancy sensors. The fixtures in the main areas including periodicals, collaborative learning areas, general collection areas, access service areas, reference areas, and microform areas have a Honeywell centralize controller.

Exterior fixtures include two wall pack LED fixtures, eighteen 30-Watt pole-mounted fixtures with LED “corn” bulbs, and one 400-Watt pole-mounted metal halide lamp. The exterior front and back hall are both illuminated by single chandelier fixtures, each containing sixteen 42-Watt compact fluorescent lamps. Exterior fixtures are controlled by a timeclock.



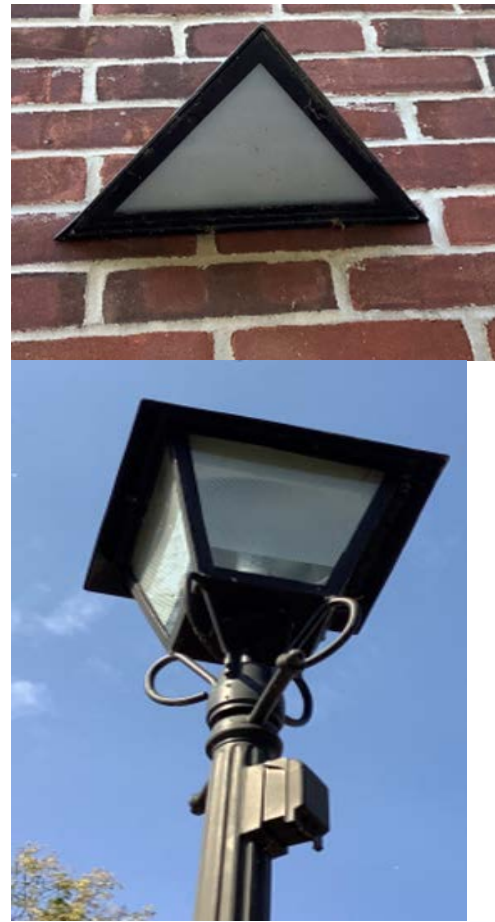
T8 Recessed Fixtures, LED Exit Sign & Wall Mounted CFL Lamp



Pendant T8 & CFL Fixtures



Honeywell Controller, CFL Recessed Can & Ceiling Mounted Occupancy Sensor



CFL Pendant Fixtures, LED Wall Pack & Walkway Pole Mounted with LED Corn Bulb

2.5 Air Handling Systems

Unitary Electric HVAC Equipment

The server and elevator rooms use two Daikin split system air source heat pumps (HP). They use a direct expansion (DX) system with each having a 4 ton cooling capacity and a heating capacity of 54 MBh. They are 17 years old, have reached the end of their useful life, and have been recommended for replacement. The heat pumps are controlled with programmable thermostats.



Air Distribution System – Air Handling Units (AHUs)

The building is conditioned by 10 air handling units (AHUs). These units are each equipped with supply and return fan motors, a hot water heating coil, and a chilled water cooling coil. They are physically located in the basement mechanical spaces. The supply fan motors vary in capacity between 7.5 to 40 horsepower (hp) while the return fan motors are mostly 15 hp. AHU-1 has no return fan motor and AHU-5 has a 10 hp return fan motor.

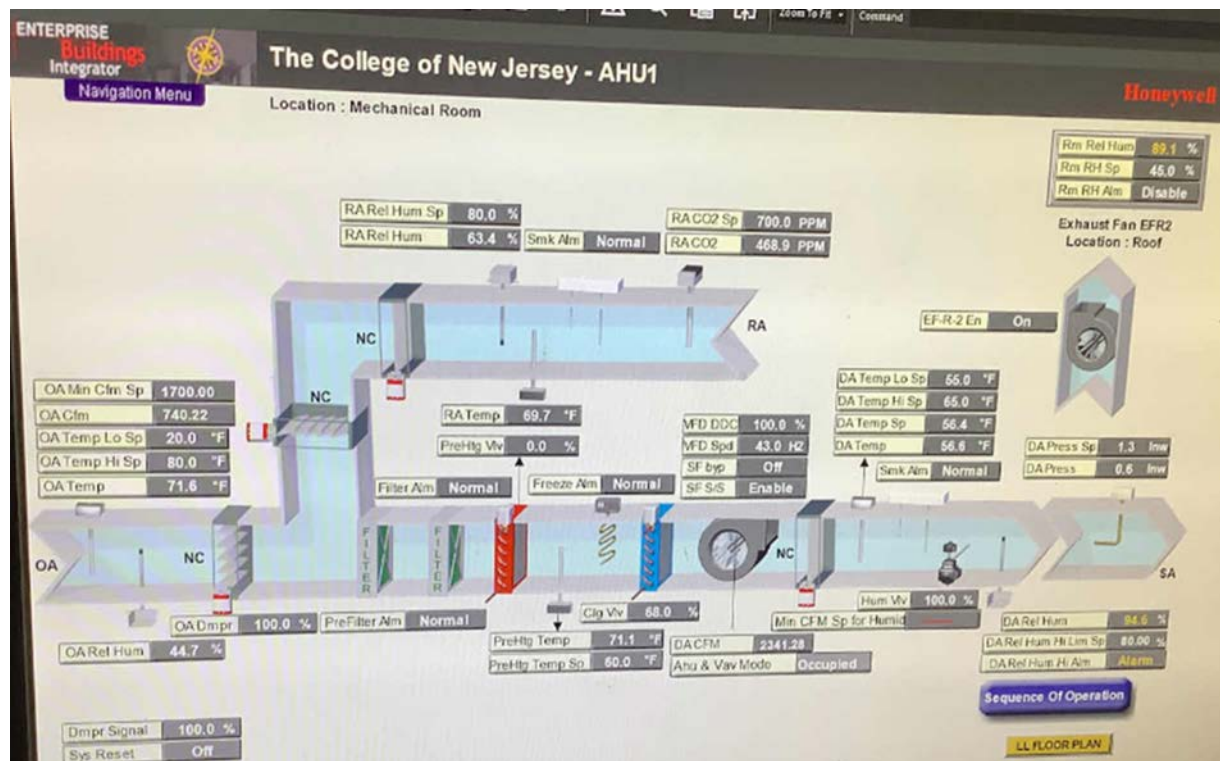
The supply and return fan motors are all equipped with variable frequency drives. Most of the units have a heat recovery wheel that reclaim a portion of the energy wasted through exhaust during the heating and cooling processes. In the heating mode, as the wheel rotates into the incoming airstream, energy is released by the wheel to bring heat and humidity the incoming airstream closer to indoor conditions, reducing unit workload and energy consumed by the system.

Air distribution is provided to supply air registers by ducts concealed above the ceilings. Heated and cooled air is distributed through ducts to variable air volume (VAV) terminals, also concealed above the ceilings. The AHUs are controlled by the facility energy management system (EMS).

- AHU-1 & 2 serve the lower level
- AHU-3 & 4 serve the 1st floor
- AHU-5 & 6 serve the 2nd floor
- AHU-7 & 8 serve the 3rd floor
- AHU-9 & 10 serve the 4th floor



AHU-5, Hot Water & Chilled Water Pipes

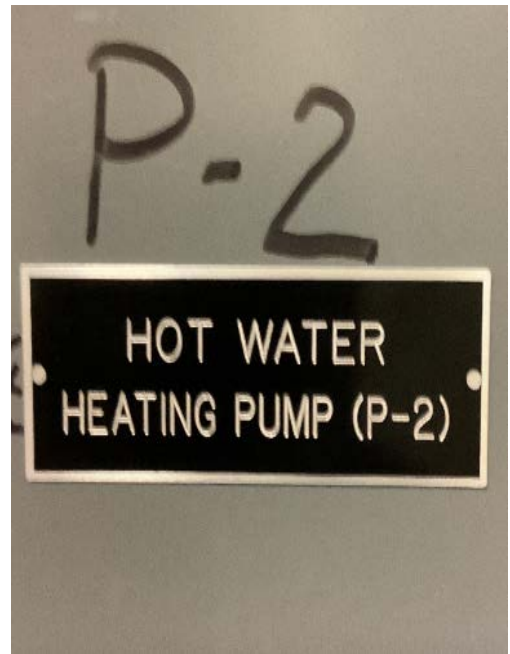


AHU-1 EMS View

2.6 Steam System

Steam is supplied by boilers and the cogeneration heat recovery system located in the Power House/Cogen Building. Steam is used in this building to produce space heating water and domestic hot water through two steam heat exchangers. There are two 3 hp condensate pumps. Space heating water is circulated to air handling units, hydronic unit heaters, and baseboards using two 30 hp variable flow pumps (HWP1 and HWP2). The hot water distribution system is 2-pipe heating only.

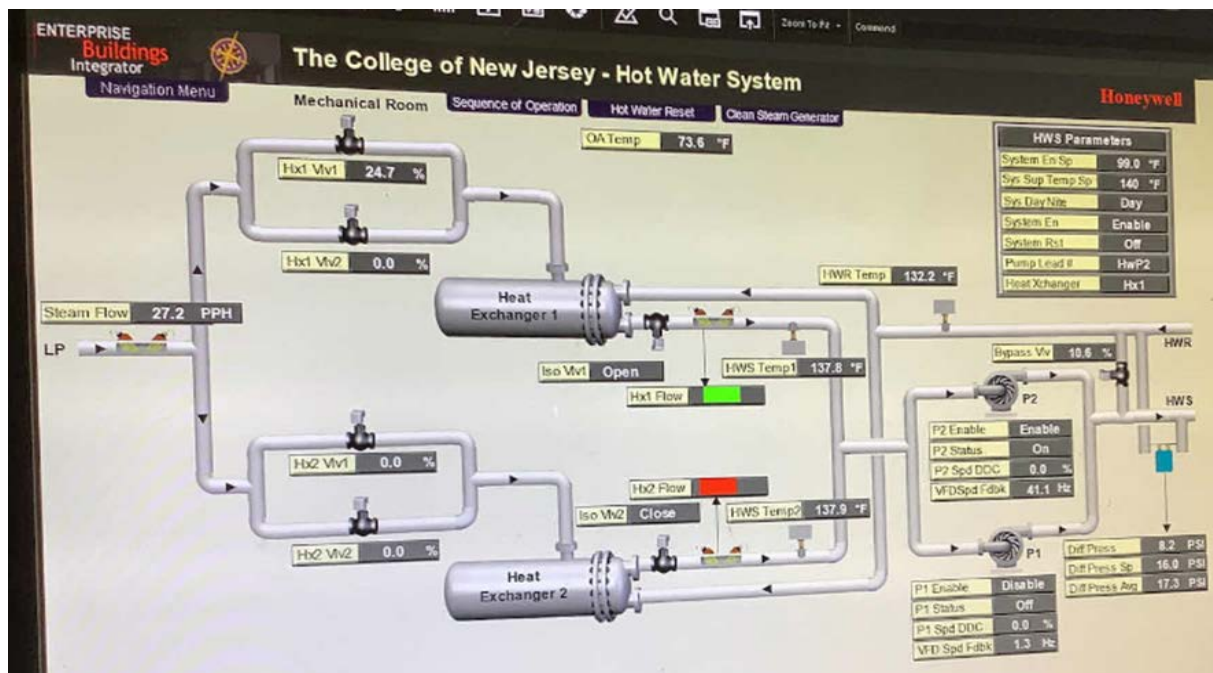
Energy use associated with producing steam was allocated to individual buildings served by the cogeneration system and boilers. Please see the Power House/Cogen building report for details regarding the steam system.



Hot Water Pump #2



Heat Exchangers & Condensate Pumps



Hot Water EMS Screen View

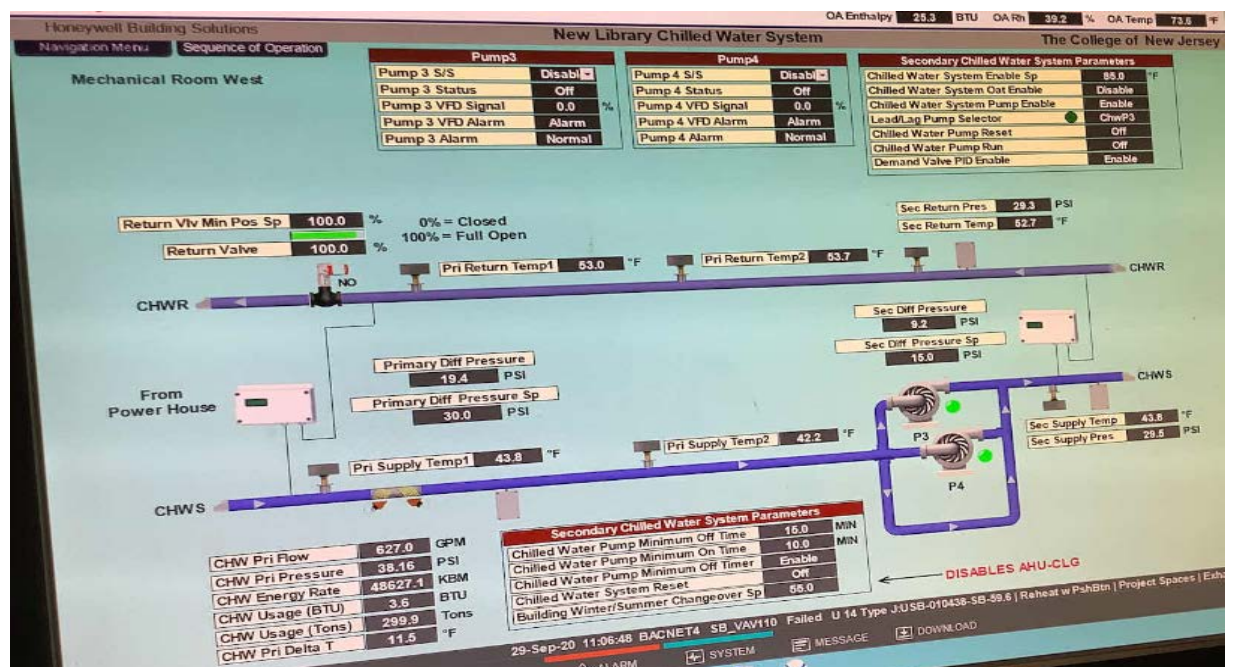
2.7 Chilled Water Systems

Chilled water is supplied by chillers located in the Power House/Cogen Building. Energy use associated with the steam engine and electric chillers used to produce chilled water was allocated to the individual buildings served by the chiller plant. Chilled water is circulated to AHUs using two 40 hp variable flow pumps (CHP3 & CHP4). The chilled water distribution system is 2-pipe cooling only.

Please see the Power House/Cogen Building report for details regarding the chiller plant.



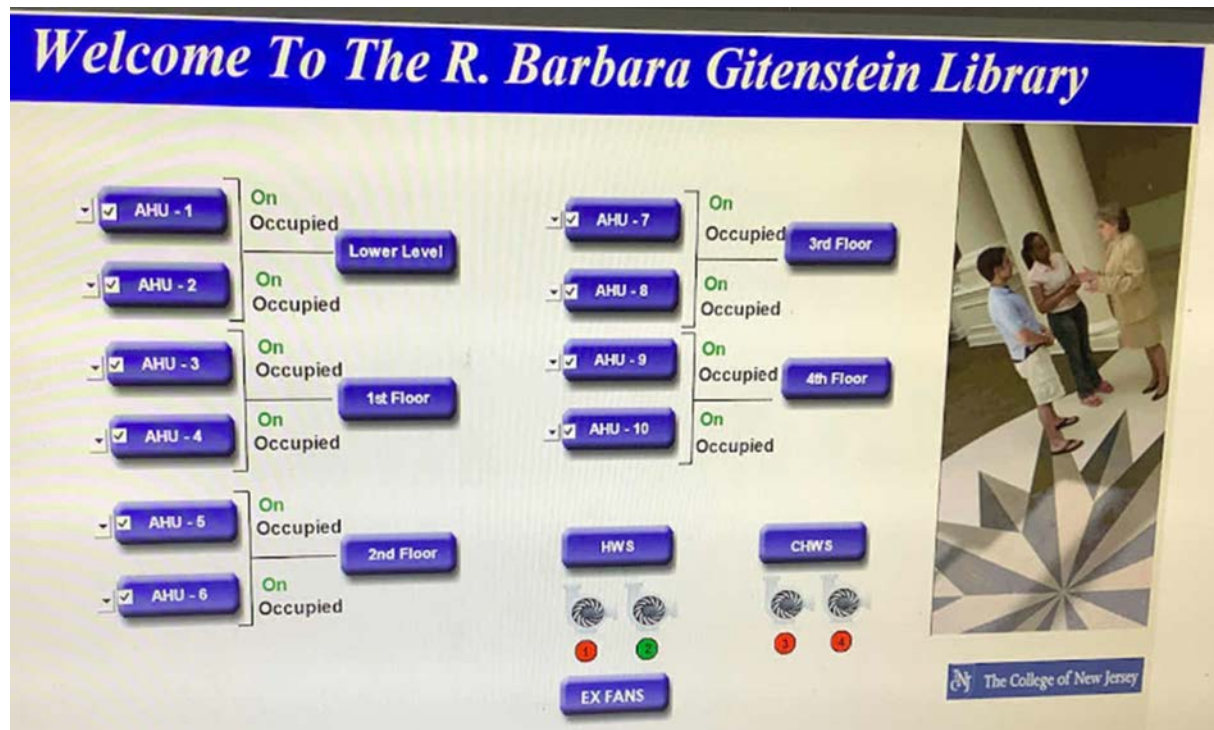
Chilled Water Pumps (CHP3,4) & Variable Speed Drives (VFDs)



Chilled Water EMS Screen View

2.8 Building Energy Management Systems (EMS)

A Honeywell EMS controls the HVAC equipment, boilers, chillers, and air handlers. The EMS provides equipment scheduling control and monitors and controls space temperatures, supply air temperatures, humidity, heating water loop temperatures and chilled water loop temperatures.



EMS Main Page

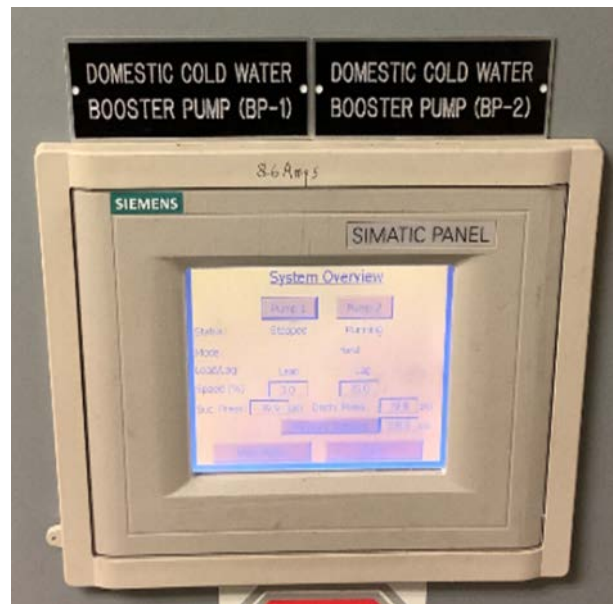
2.9 Domestic Hot Water

Hot water is produced by two domestic hot water generators (H-1 and H-2) via a heat exchanger using low pressure steam from the Power House/Cogeneration. The domestic hot water pipes are insulated and the insulation is in good condition.

Two 7.5 hp constant flow booster pumps (P1 and P2) are used to supply domestic cold water to the building.



Domestic Hot Water Generator Through Heat Exchanger



Domestic Cold Water Booster Pumps (P1P2)

2.10 Refrigeration

The Gitenstein Library houses a café with a small kitchen with a stand-up refrigerator and freezer, a refrigerator chest and one commercial style ice maker. All equipment is high efficiency and in good condition.

Visit https://www.energystar.gov/products/commercial_food_service_equipment for the latest information on high efficiency food service equipment.



Stand-Up Freezer & Ice Maker

2.11 Plug Load & Vending Machines

There are approximately 197 computer workstations throughout the facility. Plug loads throughout the building include general café and office equipment. There are also typical office loads such as copiers, small printers, microwaves, and mini fridges.

There is one refrigerated beverage vending machine and one non-refrigerated vending machine located in the cafe. Vending machines are not equipped with occupancy-based controls.



Copier & Residential Style Refrigerator



Beverage Vending Machine & Soda Dispensers

2.12 Water-Using Systems

There are restrooms with toilets, urinals, and sinks. The restroom sinks have low flow devices.

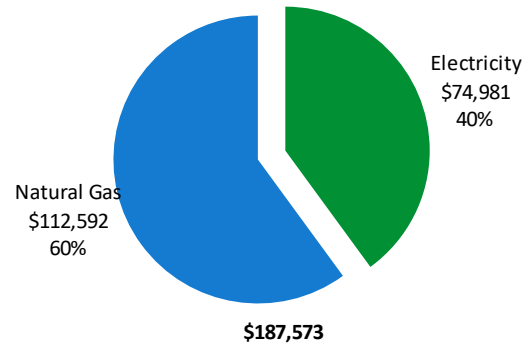


Typical Restroom Sinks

3 ENERGY USE AND COSTS

Twelve months of utility billing data are used to develop annual energy consumption and cost data. This information creates a profile of the annual energy consumption and energy costs.

Utility Summary		
Fuel	Usage	Cost
Electricity	2,631,938 kWh	\$74,981
Natural Gas	266,109 Therms	\$112,592
Total		\$187,573



An energy balance identifies and quantifies energy use in your various building systems. This can highlight areas with the most potential for improvement. This energy balance was developed using calculated energy use for each of the end uses noted in the figure.

The energy auditor collects information regarding equipment operating hours, capacity, efficiency, and other operational parameters from facility staff, drawings, and on-site observations. This information is used as the inputs to calculate the existing conditions energy use for the site. The calculated energy use is then compared to the historical energy use and the initial inputs are revised, as necessary, to balance the calculated energy use to the historical energy use.

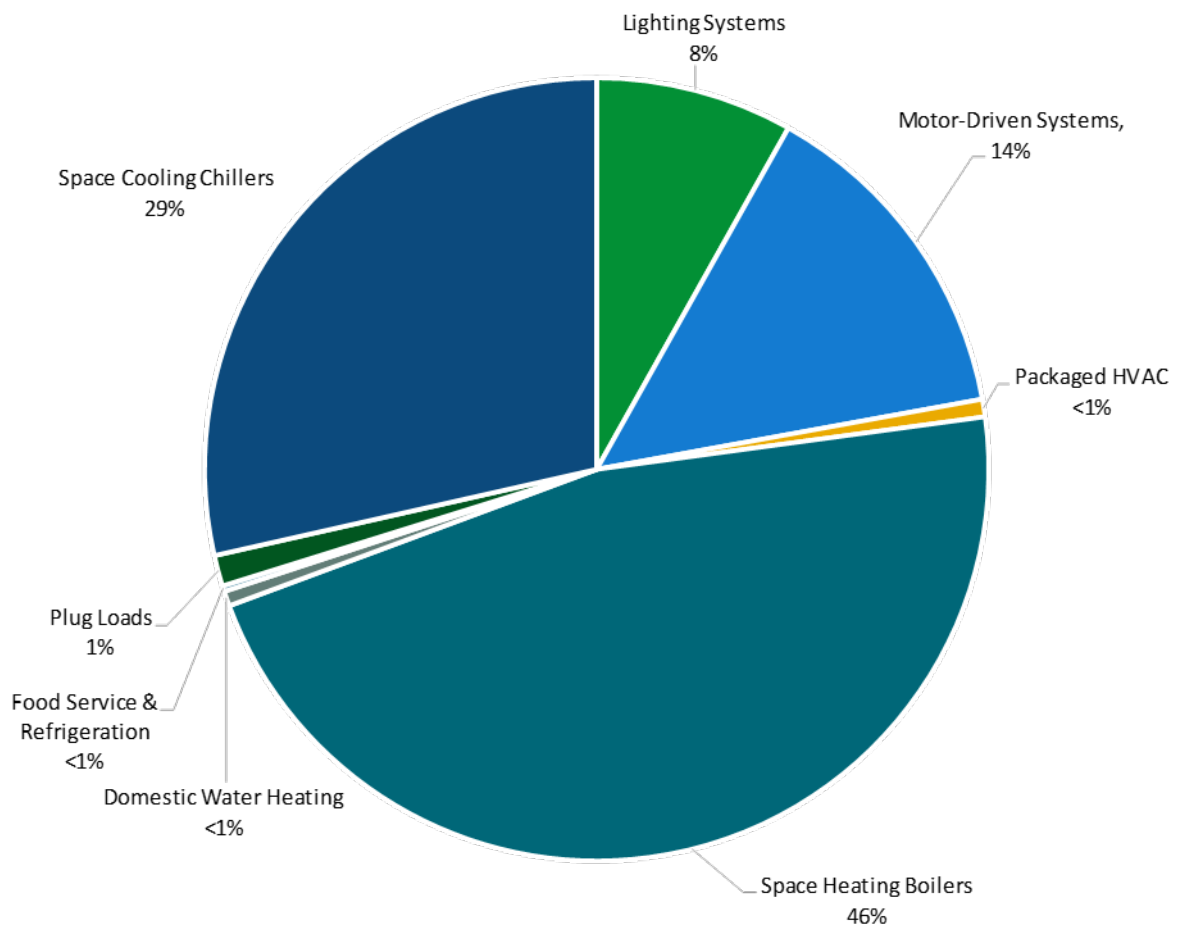
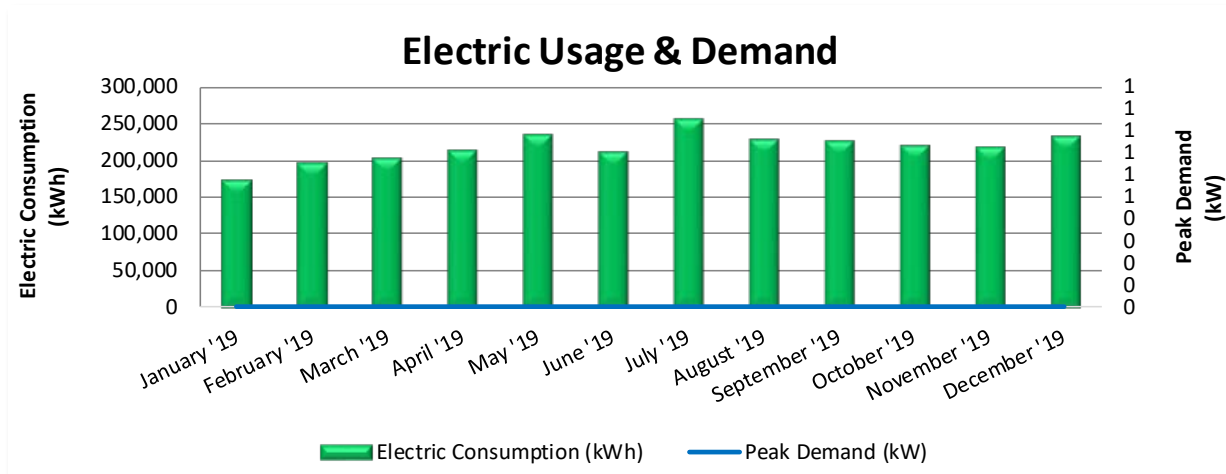


Figure 5 - Energy Balance

3.1 Electricity

PSE&G delivers electricity under rate class HTS. Electricity for the building is supplemented by the cogeneration plant.



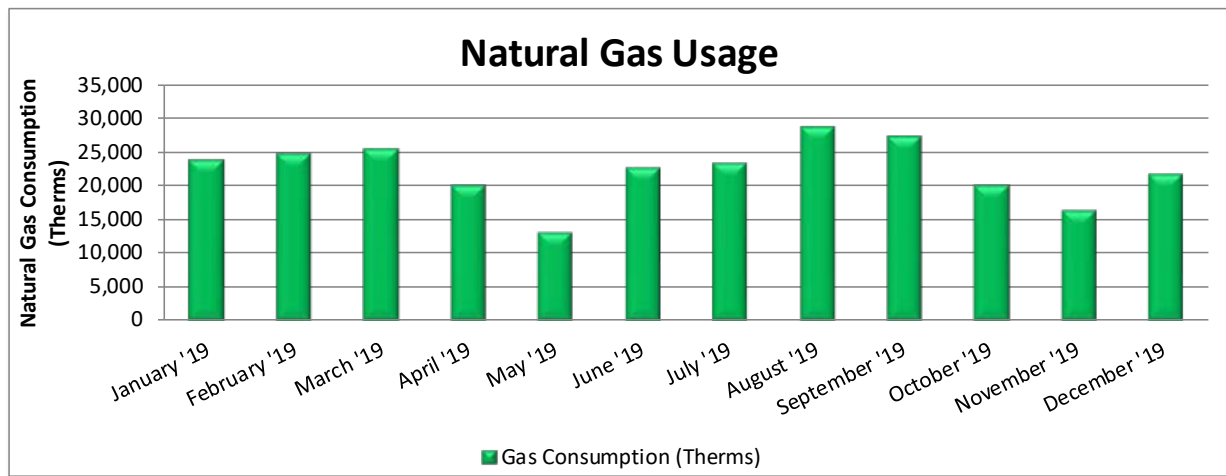
Electric Billing Data						
Period Ending	Days in Period	Electric Usage (kWh)	Demand (kW)	Demand Cost	Total Electric Cost	TRC Estimated Usage?
1/28/19	31	175,293	0	\$0	\$3,825	Yes
2/28/19	31	197,847	0	\$0	\$4,868	Yes
3/28/19	28	204,669	0	\$0	\$4,449	Yes
4/28/19	31	215,036	0	\$0	\$4,840	Yes
5/29/19	31	236,164	0	\$0	\$8,708	Yes
6/27/19	29	213,393	0	\$0	\$6,781	Yes
7/29/19	32	257,647	0	\$0	\$9,287	Yes
8/27/19	29	228,848	0	\$0	\$6,497	Yes
9/26/19	30	228,724	0	\$0	\$7,115	Yes
10/25/19	29	221,028	0	\$0	\$6,134	Yes
11/25/19	31	218,930	0	\$0	\$5,290	Yes
12/11/19	33	234,359	0	\$0	\$7,186	Yes
Totals	365	2,631,938	0	\$0	\$74,981	
Annual	365	2,631,938	0	\$0	\$74,981	

Notes:

- Electric data has been estimated based on a campus wide approach and utilization of sub metered data. Please refer to the Power House/Cogen Building report for details regarding utility baseline and campus building utility desegregation.
- The peak demand for this facility was unavailable because the building is served with electricity from the master meter.
- The average purchased electric cost over the past 12 months was \$0.147/kWh, which is the blended rate that includes energy supply, distribution, demand, and other charges. This report uses this blended rate to estimate energy cost savings.
- Effectively all of the electricity generated on-site is used on-site.

3.2 Natural Gas

PSE&G delivers natural gas for the main boiler meter under rate class TSGNF.



Gas Billing Data				
Period Ending	Days in Period	Natural Gas Usage (Therms)	Natural Gas Cost	TRC Estimated Usage?
1/31/19	31	23,790	\$8,925	Yes
2/28/19	28	24,735	\$11,770	Yes
3/31/19	31	25,343	\$11,375	Yes
4/30/19	30	20,013	\$8,378	Yes
5/31/19	31	12,876	\$5,569	Yes
6/30/19	30	22,611	\$9,753	Yes
7/31/19	31	23,288	\$9,414	Yes
8/31/19	31	28,649	\$11,220	Yes
9/30/19	30	27,174	\$10,879	Yes
10/31/19	31	19,857	\$8,479	Yes
11/30/19	30	16,257	\$7,155	Yes
12/31/19	31	21,516	\$9,675	Yes
Totals	365	266,109	\$112,592	
Annual	365	266,109	\$112,592	

Notes:

- Natural gas data has been estimated based on a campus wide approach. Please refer to the Power House/Cogen Building report for details regarding the utility baseline and campus building utility desegregation analysis.
- The average gas cost for the past 12 months is \$0.423/therm, which is the blended rate used throughout the analysis.

3.3 Benchmarking

Your building was benchmarked using the United States Environmental Protection Agency's (EPA) *Portfolio Manager*® software. Benchmarking compares your building's energy use to that of similar buildings across the country, while neutralizing variations due to location, occupancy, and operating hours. Some building types can be scored with a 1-100 ranking of a building's energy performance relative to the national building market. A score of 50 represents the national average and a score of 100 is best.

This ENERGY STAR® benchmarking score provides a comprehensive snapshot of your building's energy performance. It assesses the building's physical assets, operations, and occupant behavior, which is compiled into a quick and easy-to-understand score.

Benchmarking Score

N/A

Due to its unique characteristics, this building type is not able to receive a benchmarking score. This report contains suggestions about how to improve building performance and reduce energy costs.

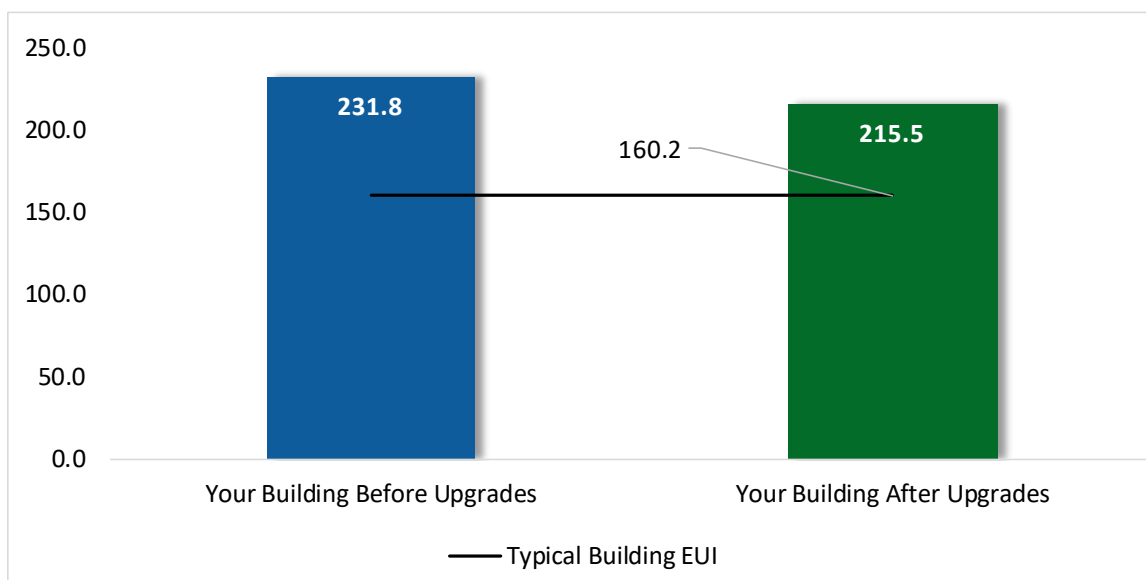


Figure 6 - Energy Use Intensity Comparison³

Energy use intensity (EUI) measures energy consumption per square foot and is the standard metric for comparing buildings' energy performance. A lower EUI means better performance and less energy consumed. A number of factors can cause a building to vary from the "typical" energy usage. Local weather conditions, building age and insulation levels, equipment efficiency, daily occupancy hours, changes in occupancy throughout the year, equipment operating hours, and occupant behavior all contribute to a building's energy use and the benchmarking score.

Benchmarking is provided for The College of New Jersey's campus. Please refer to the Power House/Cogen report for additional details regarding the benchmarking approach within Portfolio Manager®.

³ Based on all evaluated ECMs

Tracking Your Energy Performance

Keeping track of your energy use on a monthly basis is one of the best ways to keep energy costs in check. Update your utility information in Portfolio Manager® regularly, so that you can keep track of your building's performance.

We have created a Portfolio Manager® account for your facility and we have already entered the monthly utility data shown above for you. Account login information for your account will be sent via email.

Free online training is available to help you use ENERGY STAR® Portfolio Manager® to track your building's performance at: <https://www.energystar.gov/buildings/training>.

For more information on ENERGY STAR® and Portfolio Manager®, visit their website⁴.

⁴ <https://www.energystar.gov/buildings/facility-owners-and-managers/existing-buildings/earn-recognition/energy-star-certification/how-app-1>.

4 ENERGY CONSERVATION MEASURES

The goal of this audit report is to identify and evaluate potential energy efficiency improvements, provide information about the cost effectiveness of those improvements, and recognize potential financial incentives from NJBPU. Most energy conservation measures have received preliminary analysis of feasibility which identifies expected ranges of savings and costs. This level of analysis is typically sufficient to demonstrate project cost-effectiveness and help prioritize energy measures.

Calculations of energy use and savings are based on the current version of the *New Jersey's Clean Energy Program Protocols to Measure Resource Savings*, which is approved by the NJBPU. Further analysis or investigation may be required to calculate more precise savings based on specific circumstances.

Operation and maintenance costs for the proposed new equipment will generally be lower than the current costs for the existing equipment—especially if the existing equipment is at or past its normal useful life. We have conservatively assumed there to be no impact on overall maintenance costs over the life of the equipment.

Financial incentives are based on the current NJCEP prescriptive SmartStart program. A higher level of investigation may be necessary to support any SmartStart Custom, Pay for Performance, or Direct Install incentive applications. Some measures and proposed upgrades may be eligible for higher incentives than those shown below through other NJCEP programs described in a following section of this report.

For a detailed list of the locations and recommended energy conservation measures for all inventoried equipment, see **Appendix A: Equipment Inventory & Recommendations**.

#	Energy Conservation Measure	Cost Effective?	Annual Electric Savings (kWh)	Peak Demand Savings (kW)	Annual Fuel Savings (MMBtu)	Annual Energy Cost Savings (\$)	Estimated M&L Cost (\$)	Estimated Incentive (\$)*	Estimated Net M&L Cost (\$)	Simple Payback Period (yrs)**	CO ₂ e Emissions Reduction (lbs)
Lighting Upgrades			441,199	43.8	-101	\$64,482	\$102,817	\$25,994	\$76,823	1.2	432,490
ECM 1	Install LED Fixtures	Yes	8,620	0.7	-2	\$1,261	\$3,320	\$340	\$2,980	2.4	8,488
ECM 2	Retrofit Fixtures with LED Lamps	Yes	432,579	43.1	-99	\$63,221	\$99,497	\$25,654	\$73,843	1.2	424,002
Lighting Control Measures			107,470	10.5	-25	\$15,706	\$59,383	\$10,670	\$48,713	3.1	105,327
ECM 3	Install Occupancy Sensor Lighting Controls	Yes	103,062	10.1	-24	\$15,062	\$54,658	\$7,070	\$47,588	3.2	101,007
ECM 4	Install High/Low Lighting Controls	Yes	4,408	0.4	-1	\$644	\$4,725	\$3,600	\$1,125	1.7	4,320
Motor Upgrades			19,425	2.5	0	\$2,858	\$29,793	\$0	\$29,793	10.4	19,561
ECM 5	Premium Efficiency Motors	Yes	19,425	2.5	0	\$2,858	\$29,793	\$0	\$29,793	10.4	19,561
Variable Frequency Drive (VFD) Measures			11,881	1.9	0	\$1,748	\$13,687	\$325	\$13,362	7.6	11,964
ECM 6	Install VFDs on Constant Volume (CV) Fans	Yes	11,881	1.9	0	\$1,748	\$13,687	\$325	\$13,362	7.6	11,964
Unitary HVAC Measures			8,694	6.2	0	\$1,279	\$13,527	\$800	\$12,727	10.0	8,755
ECM 7	Install High Efficiency Heat Pumps	Yes	8,694	6.2	0	\$1,279	\$13,527	\$800	\$12,727	10.0	8,755
Food Service & Refrigeration Measures			1,209	0.1	0	\$178	\$230	\$50	\$180	1.0	1,217
ECM 8	Vending Machine Control	Yes	1,209	0.1	0	\$178	\$230	\$50	\$180	1.0	1,217
Custom Measures			56,669	0.0	427	\$10,145	\$58,155	\$0	\$58,155	5.7	107,103
ECM 9	Retro-Commissioning Study	Yes	30,349	0.0	327	\$5,848	\$46,055	\$0	\$46,055	7.9	68,847
ECM 10	Sub Metering	Yes	26,319	0.0	100	\$4,297	\$12,100	\$0	\$12,100	2.8	38,257
TOTALS			646,547	65.1	302	\$96,396	\$277,592	\$37,839	\$239,753	2.5	686,418

* - All incentives presented in this table are based on NJ SmartStart equipment incentives and assume proposed equipment meets minimum performance criteria for that program.

** - Simple Payback Period is based on net measure costs (i.e. after incentives).

Figure 7 – All Evaluated ECMs

#	Energy Conservation Measure	Annual Electric Savings (kWh)	Peak Demand Savings (kW)	Annual Fuel Savings (MMBtu)	Annual Energy Cost Savings (\$)	Estimated M&L Cost (\$)	Estimated Incentive (\$)*	Estimated Net M&L Cost (\$)	Simple Payback Period (yrs)**	CO ₂ e Emissions Reduction (lbs)
Lighting Upgrades		441,199	43.8	-101	\$64,482	\$102,817	\$25,994	\$76,823	1.2	432,490
ECM 1	Install LED Fixtures	8,620	0.7	-2	\$1,261	\$3,320	\$340	\$2,980	2.4	8,488
ECM 2	Retrofit Fixtures with LED Lamps	432,579	43.1	-99	\$63,221	\$99,497	\$25,654	\$73,843	1.2	424,002
Lighting Control Measures		107,470	10.5	-25	\$15,706	\$59,383	\$10,670	\$48,713	3.1	105,327
ECM 3	Install Occupancy Sensor Lighting Controls	103,062	10.1	-24	\$15,062	\$54,658	\$7,070	\$47,588	3.2	101,007
ECM 4	Install High/Low Lighting Controls	4,408	0.4	-1	\$644	\$4,725	\$3,600	\$1,125	1.7	4,320
Motor Upgrades		19,425	2.5	0	\$2,858	\$29,793	\$0	\$29,793	10.4	19,561
ECM 5	Premium Efficiency Motors	19,425	2.5	0	\$2,858	\$29,793	\$0	\$29,793	10.4	19,561
Variable Frequency Drive (VFD) Measures		11,881	1.9	0	\$1,748	\$13,687	\$325	\$13,362	7.6	11,964
ECM 6	Install VFDs on Constant Volume (CV) Fans	11,881	1.9	0	\$1,748	\$13,687	\$325	\$13,362	7.6	11,964
Unitary HVAC Measures		8,694	6.2	0	\$1,279	\$13,527	\$800	\$12,727	10.0	8,755
ECM 7	Install High Efficiency Heat Pumps	8,694	6.2	0	\$1,279	\$13,527	\$800	\$12,727	10.0	8,755
Food Service & Refrigeration Measures		1,209	0.1	0	\$178	\$230	\$50	\$180	1.0	1,217
ECM 8	Vending Machine Control	1,209	0.1	0	\$178	\$230	\$50	\$180	1.0	1,217
Custom Measures		56,669	0.0	427	\$10,145	\$58,155	\$0	\$58,155	5.7	107,103
ECM 9	Retro-Commissioning Study	30,349	0.0	327	\$5,848	\$46,055	\$0	\$46,055	7.9	68,847
ECM 10	Sub Metering	26,319	0.0	100	\$4,297	\$12,100	\$0	\$12,100	2.8	38,257
TOTALS		646,547	65.1	302	\$96,396	\$277,592	\$37,839	\$239,753	2.5	686,418

* - All incentives presented in this table are based on NJ SmartStart equipment incentives and assume proposed equipment meets minimum performance criteria for that program.

** - Simple Payback Period is based on net measure costs (i.e. after incentives).

Figure 8 – Cost Effective ECMs

4.1 Lighting

#	Energy Conservation Measure	Annual Electric Savings (kWh)	Peak Demand Savings (kW)	Annual Fuel Savings (MMBtu)	Annual Energy Cost Savings (\$)	Estimated M&L Cost (\$)	Estimated Incentive (\$) *	Estimated Net M&L Cost (\$)	Simple Payback Period (yrs) **	CO ₂ e Emissions Reduction (lbs)
Lighting Upgrades		441,199	43.8	-101	\$64,482	\$102,817	\$25,994	\$76,823	1.2	432,490
ECM 1	Install LED Fixtures	8,620	0.7	-2	\$1,261	\$3,320	\$340	\$2,980	2.4	8,488
ECM 2	Retrofit Fixtures with LED Lamps	432,579	43.1	-99	\$63,221	\$99,497	\$25,654	\$73,843	1.2	424,002

When considering lighting upgrades, we suggest using a comprehensive design approach that simultaneously upgrades lighting fixtures and controls to maximize energy savings and improve occupant lighting. Comprehensive design will also consider appropriate lighting levels for different space types to make sure that the right amount of light is delivered where needed. If conversion to LED light sources are proposed, we suggest converting all of a specific lighting type (e.g. linear fluorescent) to LED lamps to minimize the number of lamp types in use at the facility, which should help reduce future maintenance costs.

ECM 1: Install LED Fixtures

Replace existing walkway fixture containing the 400-Watt metal halide lamps with new LED light fixture. This measure saves energy by installing LEDs which use less power than other technologies with a comparable light output.

In some cases, HID fixtures can be retrofit with screw-based LED lamps. Replacing an existing HID fixture with a new LED fixture will generally provide better overall lighting optics; however, replacing the HID lamp with a LED screw-in lamp is typically a less expensive retrofit. We recommend you work with your lighting contractor to determine which retrofit solution is best suited to your needs and will be compatible with the existing fixture.

Maintenance savings may also be achieved since LED lamps last longer than other light sources and therefore do not need to be replaced as often.

Affected building areas: 400W exterior walkway fixture and auditorium track fixtures.

ECM 2: Retrofit Fixtures with LED Lamps

Replace fluorescent T8, compact fluorescent and incandescent lamps with LED lamps. Many LED tubes are direct replacements for existing fluorescent tubes and can be installed while leaving the fluorescent fixture ballast in place. LED lamps can be used in existing fixtures as a direct replacement for most other lighting technologies.

This measure saves energy by installing LEDs which use less power than other lighting technologies yet provide equivalent lighting output for the space. Maintenance savings may also be available, as longer-lasting LEDs lamps will not need to be replaced as often as the existing lamps.

Affected building areas: all areas with fluorescent fixtures with T8 tubes, compact fluorescent, and incandescent lamps.

4.2 Lighting Controls

#	Energy Conservation Measure	Annual Electric Savings (kWh)	Peak Demand Savings (kW)	Annual Fuel Savings (MMBtu)	Annual Energy Cost Savings (\$)	Estimated M&L Cost (\$)	Estimated Incentive (\$)*	Estimated Net M&L Cost (\$)	Simple Payback Period (yrs)**	CO ₂ e Emissions Reduction (lbs)
Lighting Control Measures		107,470	10.5	-25	\$15,706	\$59,383	\$10,670	\$48,713	3.1	105,327
ECM 3	Install Occupancy Sensor Lighting Controls	103,062	10.1	-24	\$15,062	\$54,658	\$7,070	\$47,588	3.2	101,007
ECM 4	Install High/Low Lighting Controls	4,408	0.4	-1	\$644	\$4,725	\$3,600	\$1,125	1.7	4,320

Lighting controls reduce energy use by turning off or lowering lighting fixture power levels when not in use. A comprehensive approach to lighting design should upgrade the lighting fixtures and the controls together for maximum energy savings and improved lighting for occupants.

ECM 3: Install Occupancy Sensor Lighting Controls

Install occupancy sensors to control lighting fixtures in areas that are frequently unoccupied, even for short periods. For most spaces, we recommend that lighting controls use dual technology sensors, which reduce the possibility of lights turning off unexpectedly.

Occupancy sensors detect occupancy using ultrasonic and/or infrared sensors. When an occupant enters the space, the lighting fixtures switch to full lighting levels. Most occupancy sensor lighting controls allow users to manually turn fixtures on/off, as needed. Some controls can also provide dimming options.

A vacancy sensor turns the lights off when the space is not occupied but differs slightly from an occupancy sensor in that it does not automatically turn the lights on when the space is reoccupied. It requires a manual button press by the occupant to engage the lighting systems. Vacancy sensing maximizes the energy savings from the sensor because it's not always necessary to turn lights on when you walk into a room. Vacancy sensors should be used in cases where occupants are less likely to turn the lights on when temporarily entering a space, when adequate day light is available, or when lighting from adjacent spaces or emergency systems is adequate for the task at hand. Application examples for vacancy sensors may include dorm residential spaces and common areas such as conference rooms.

Occupancy sensors can be mounted on the wall at existing switch locations, mounted on the ceiling, or in remote locations. In general, wall switch replacement sensors are best suited to single occupant offices and other small rooms. Ceiling-mounted or remote mounted sensors are used in large spaces, locations without local switching, and where wall switches are not in the line-of-sight of the main work area.

This measure provides energy savings by reducing the lighting operating hours.

Affected building areas: offices, restrooms, storage rooms, and light fixtures in areas that are controlled by a Honeywell controller.

ECM 4: Install High/Low Lighting Controls

Install occupancy sensors to provide dual level lighting control for lighting fixtures in spaces that are infrequently occupied but may require some level of continuous lighting for safety or security reasons.

Lighting fixtures with these controls operate at default low levels when the area is unoccupied to provide minimal lighting to meet security or safety code requirements for egress. Sensors detect occupancy using ultrasonic and/or infrared sensors. When an occupant enters the space, the lighting fixtures switch to full lighting levels. Fixtures automatically switch back to low level after a predefined period of vacancy. In parking lots and parking garages with significant ambient lighting, this control can sometimes be combined with photocell controls to turn the lights off when there is sufficient daylight.

The controller lowers the light level by dimming the fixture output. Therefore, the controlled fixtures need to have a dimmable ballast or driver. This will need to be considered when selecting retrofit lamps and bulbs for the areas proposed for high/low control.

This measure provides energy savings by reducing the light fixture power draw when reduced light output is appropriate.

Affected building areas: hallways and stairwells.

For this type of measure the occupancy sensors will generally be ceiling or fixture mounted. Sufficient sensor coverage must be provided to ensure that lights turn on in each area as an occupant approaches.

4.3 Motors

#	Energy Conservation Measure	Annual Electric Savings (kWh)	Peak Demand Savings (kW)	Annual Fuel Savings (MMBtu)	Annual Energy Cost Savings (\$)	Estimated M&L Cost (\$)	Estimated Incentive (\$)*	Estimated Net M&L Cost (\$)	Simple Payback Period (yrs)**	CO ₂ e Emissions Reduction (lbs)
Motor Upgrades		19,425	2.5	0	\$2,858	\$29,793	\$0	\$29,793	10.4	19,561
ECM 5	Premium Efficiency Motors	19,425	2.5	0	\$2,858	\$29,793	\$0	\$29,793	10.4	19,561

ECM 5: Premium Efficiency Motors

Replace standard efficiency supply and return fan motors with IHP 2014 efficiency motors. This evaluation assumes that existing motors will be replaced with motors of equivalent size and type. In some cases, additional savings may be possible by downsizing motors to better meet the motor's current load requirements.

Affected motors:

Location	Area(s)/System(s) Served	Motor Quantity	Motor Application	HP Per Motor	Additional Motor Description
Basement East - Mech Room	Supply Fan AHU-1 - Lower Level	1	Supply Fan	7.5	Supply Fan
Basement West - Mech Room	Supply Fan AHU-2 - Lower Level	1	Supply Fan	20.0	Supply Fan
Basement West - Mech Room	Return Fan AHU-2 - Lower Level	1	Return Fan	15.0	Return Fan
Basement West - Mech Room	Supply Fan AHU-3 - 1st Floor	1	Supply Fan	20.0	Supply Fan
Basement West - Mech Room	Return Fan AHU-3 - 1st Floor	1	Return Fan	15.0	Return Fan
Basement East - Mech Room	Supply Fan AHU-4 - 1st Floor	1	Supply Fan	20.0	Supply Fan
Basement East - Mech Room	Return Fan AHU-4 - 1st Floor	1	Return Fan	15.0	Return Fan
Basement West - Mech Room	Supply Fan AHU-5 - 2nd Floor	1	Supply Fan	20.0	Supply Fan
Basement East - Mech Room	Supply Fan AHU-6 - 2nd Floor	1	Supply Fan	20.0	Supply Fan
Basement East - Mech Room	Return Fan AHU-6 - 2nd Floor	1	Return Fan	15.0	Return Fan
Basement West - Mech Room	Supply Fan AHU-7 - 3rd Floor	1	Supply Fan	20.0	Supply Fan
Basement West - Mech Room	Return Fan AHU-7 - 3rd Floor	1	Return Fan	15.0	Return Fan
Basement East - Mech Room	Return Fan AHU-8 - 3rd Floor	1	Return Fan	20.0	Return Fan
Basement West - Mech Room	Return Fan AHU-9 - 4th Floor	1	Return Fan	15.0	Return Fan
Basement East - Mech Room	Return Fan AHU-10 - 4th Floor	1	Return Fan	15.0	Return Fan

Savings are based on the difference between baseline and proposed efficiencies and the assumed annual operating hours. The base case motor energy consumption is estimated using the efficiencies found on nameplates or estimated based on the age of the motor and our best estimates of motor run hours. Efficiencies of proposed motor upgrades are obtained from the current *New Jersey's Clean Energy Program Protocols to Measure Resource Savings*.

4.4 Variable Frequency Drives (VFD)

#	Energy Conservation Measure	Annual Electric Savings (kWh)	Peak Demand Savings (kW)	Annual Fuel Savings (MMBtu)	Annual Energy Cost Savings (\$)	Estimated M&L Cost (\$)	Estimated Incentive (\$)*	Estimated Net M&L Cost (\$)	Simple Payback Period (yrs)**	CO ₂ e Emissions Reduction (lbs)
Variable Frequency Drive (VFD) Measures		11,881	1.9	0	\$1,748	\$13,687	\$325	\$13,362	7.6	11,964
ECM 6	Install VFDs on Constant Volume (CV) Fans	11,881	1.9	0	\$1,748	\$13,687	\$325	\$13,362	7.6	11,964

Variable frequency drives control motors for fans, pumps, and process equipment based on the actual output required of the driven equipment. Energy savings result from more efficient control of motor energy usage when equipment operates at partial load. The magnitude of energy savings depends on the estimated amount of time that the motor would operate at partial load. For equipment with proposed VFDs, we have included replacing the controlled motor with a new inverter duty rated motor to conservatively account for the cost of an inverter duty rated motor.

ECM 6: Install VFDs on Constant Volume (CV) Fans

Install VFDs to control constant volume exhaust fan motor speeds. This converts a constant-volume, single-zone air handling system into a variable-air-volume (VAV) system.

Zone thermostats signal the VFD to adjust fan speed to maintain the appropriate temperature in the zone, while maintaining a constant supply air temperature.

Energy savings result from reducing the fan speed (and power) when conditions allow for reduced air flow.

Affected motors: EF-1 exhaust fan.

4.5 Unitary HVAC

#	Energy Conservation Measure	Annual Electric Savings (kWh)	Peak Demand Savings (kW)	Annual Fuel Savings (MMBtu)	Annual Energy Cost Savings (\$)	Estimated M&L Cost (\$)	Estimated Incentive (\$)*	Estimated Net M&L Cost (\$)	Simple Payback Period (yrs)**	CO ₂ e Emissions Reduction (lbs)
Unitary HVAC Measures		8,694	6.2	0	\$1,279	\$13,527	\$800	\$12,727	10.0	8,755
ECM 7	Install High Efficiency Heat Pumps	8,694	6.2	0	\$1,279	\$13,527	\$800	\$12,727	10.0	8,755

ECM 7: Install High Efficiency Heat Pumps

Replace standard efficiency heat pumps with high efficiency heat pumps. A higher EER or SEER rating indicates a more efficient cooling system and a higher HSPF rating indicates more efficient heating mode. The magnitude of energy savings for this measure depends on the relative efficiency of the older unit versus the new high efficiency unit, the average heating and cooling loads, and the estimated annual operating hours.

Affected units: two Daikin heat pumps serving Telecommunication and server rooms.

4.6 Food Service & Refrigeration Measures

#	Energy Conservation Measure	Annual Electric Savings (kWh)	Peak Demand Savings (kW)	Annual Fuel Savings (MMBtu)	Annual Energy Cost Savings (\$)	Estimated M&L Cost (\$)	Estimated Incentive (\$)*	Estimated Net M&L Cost (\$)	Simple Payback Period (yrs)**	CO ₂ e Emissions Reduction (lbs)
Food Service & Refrigeration Measures		1,209	0.1	0	\$178	\$230	\$50	\$180	1.0	1,217
ECM 8	Vending Machine Control	1,209	0.1	0	\$178	\$230	\$50	\$180	1.0	1,217

ECM 8: Vending Machine Control

Vending machines operate continuously, even during unoccupied hours. Install occupancy sensor controls to reduce energy use. These controls power down vending machines when the vending machine area has been vacant for some time, and they power up the machines at necessary regular intervals or when the surrounding area is occupied. Energy savings are dependent on the vending machine and activity level in the area surrounding the machines.

4.7 Custom Measures

#	Energy Conservation Measure	Annual Electric Savings (kWh)	Peak Demand Savings (kW)	Annual Fuel Savings (MMBtu)	Annual Energy Cost Savings (\$)	Estimated M&L Cost (\$)	Estimated Incentive (\$)*	Estimated Net M&L Cost (\$)	Simple Payback Period (yrs)**	CO ₂ e Emissions Reduction (lbs)
Custom Measures		56,669	0.0	427	\$10,145	\$58,155	\$0	\$58,155	5.7	107,103
ECM 9	Retro-Commissioning Study	30,349	0.0	327	\$5,848	\$46,055	\$0	\$46,055	7.9	68,847
ECM 10	Sub Metering	26,319	0.0	100	\$4,297	\$12,100	\$0	\$12,100	2.8	38,257

ECM 9: Retro-Commissioning Study

Due to the complexity of today's HVAC systems and controls a thorough analysis and rebalance of heating, ventilation, and cooling systems should periodically be conducted. There are indications at this site that systems may be not be operating correctly or as efficiently as they could be. One important tool available to building operators to ensure proper system operation is retro-commissioning.

Retro-commissioning is a common practice recommended by the American Society of Heating, Refrigerating and Air-Conditioning Engineers (ASHRAE) to be implemented every few years. We recommend that you contact a reputable engineering firm that specializes in energy control systems and retro-commissioning. Ask them to propose a scope of work and an outline of the procedures and processes to be implemented, including a schedule and the roles of all responsible parties.

Once goals and responsibilities are established, the objective of the investigation process is to understand how the building is currently operating, identify the issues, and determine the most cost-effective way to improve performance. The retro-commissioning agent will review building documentation, interview building occupants, and inspect and test the equipment. Information is then compiled into a report and shared with facility staff, who will select which recommendations to implement after reviewing the findings.

The implementation phase puts the selected processes into place. Typical measures may include sensor calibration, equipment schedule changes, damper linkage repair and similar relatively low-cost adjustments -- although more expensive sophisticated programming and building control system

upgrades may be warranted. Approved measures may be implemented by the agent, the building staff, or by subcontractors. Typically, a combination of these individuals makes up the retro-commissioning team.

After the approved measures are implemented, the team will verify that the changes are working as expected. Baseline and post-case measurements will allow building staff to monitor equipment and ensure that the benefits are maintained.

A high-level evaluation of potential savings and costs is provided for demonstration purposes only. It is a screening evaluation for the potential in HVAC Control Improvements. Based on industry standards and previous project experience, the potential energy savings may be up to 15% of existing HVAC energy use. The average cost of retro-commissioning studies and control improvements is \$0.30 per square foot. Actual savings and costs will need to be outlined by the specific contractor engaged to perform the study. For the purposes of this report, we have conservatively estimated savings to be 2% of the total HVAC energy consumption baseline.

ECM 10: Sub Metering

Facility staff expressed interest in utility sub metering key buildings which are currently served by a master meter and the central plant. Utility submeters alone do not save energy, but they are a useful tool under the right circumstances. Utility sub-meters can provide facility staff with real-time energy use data for specific buildings, information that enhances the potential for greater energy management activities. Revenue grade submeters are a tool that allow owners to bill tenants or departments for the energy consumed in the spaces they occupy. Better resolution on building system performance can lead to occupant behavioral changes which often result in reduced energy use.

A high-level evaluation of potential savings and costs is provided for demonstration purposes only. Based on industry standards and case studies, the potential energy savings may be up to 5% of existing energy usage. For the purposes of this report, a conservative assumed savings of 1% was applied to building allocated electrical and natural gas consumption of the sub metered buildings based on the premise of occupant behavioral changes. For this building the following submeters are proposed: smart electric meter and chilled water flow meter. Meter costs for the evaluation are based on average building use across the campus: smart electric meter \$2,400 and chilled water flow meter \$9,700. The actual scope of work and implementation costs must be provided by a contractor in the future. This measure is recommended for implementation based on the initial energy and economic results but primarily for enhancing the potential for greater energy management activities.

5 ENERGY EFFICIENT BEST PRACTICES

A whole building maintenance plan will extend equipment life; improve occupant comfort, health, and safety; and reduce energy and maintenance costs.

Operation and maintenance (O&M) plans enhance the operational efficiency of HVAC and other energy intensive systems and could save between 5 to 20 percent of the energy usage in your building without substantial capital investment. A successful plan includes your records of energy usage trends and costs, building equipment lists, current maintenance practices, planned capital upgrades, and incorporates your ideas for improved building operation. Your plan will address goals for energy-efficient operation, provide detail on how to reach the goals, and will outline procedures for measuring and reporting whether goals have been achieved.

You may already be doing some of these things— see our list below for potential additions to your maintenance plan. Be sure to consult with qualified equipment specialists for details on proper maintenance and system operation.

Energy Tracking with ENERGY STAR® Portfolio Manager®



You've heard it before - you can't manage what you don't measure. ENERGY STAR® Portfolio Manager® is an online tool that you can use to measure and track energy and water consumption, as well as greenhouse gas emissions⁵. Your account has already been established. Now you can continue to keep tabs on your energy performance every month.

Doors and Windows

Close exterior doors and windows in heated and cooled areas. Leaving doors and windows open leads to a loss of heat during the winter and chilled air during the summer. Reducing air changes per hour (ACH) can lead to increased occupant comfort as well as heating and cooling savings, especially when combined with proper HVAC controls and adequate ventilation.

Lighting Maintenance



- Clean lamps, reflectors and lenses of dirt, dust, oil, and smoke buildup every six to twelve months. Light levels decrease over time due to lamp aging, lamp and ballast failure, and buildup of dirt and dust. Together, this can reduce total light output by up to 60% while still drawing full power.
- In addition to routine cleaning, developing a maintenance schedule can ensure that maintenance is performed regularly, and it can reduce the overall cost of fixture re-lamping and re-ballasting. Group re-lamping and re-ballasting maintains lighting levels and minimizes the number of site visits by a lighting technician or contractor, decreasing the overall cost of maintenance.

⁵ <https://www.energystar.gov/buildings/facility-owners-and-managers/existing-buildings/use-portfolio-manager>.

Lighting Controls

As part of a lighting maintenance schedule, test lighting controls to ensure proper functioning. For occupancy sensors, this requires triggering the sensor and verifying that the sensor's timer settings are correct. For daylight and photocell sensors, maintenance involves cleaning sensor lenses and confirming that setpoints and sensitivity are configured properly. Adjust exterior lighting time clock controls seasonally as needed to match your lighting requirements.

Motor Maintenance

Motors have many moving parts. As these parts degrade over time, the efficiency of the motor is reduced. Routine maintenance prevents damage to motor components. Routine maintenance should include cleaning surfaces and ventilation openings on motors to prevent overheating, lubricating moving parts to reduce friction, inspecting belts and pulleys for wear and to ensure they are at proper alignment and tension, and cleaning and lubricating bearings. Consult a licensed technician to assess these and other motor maintenance strategies.

AC System Evaporator/Condenser Coil Cleaning

Dirty evaporator and condenser coils restrict air flow and restrict heat transfer. This increases the loads on the evaporator and condenser fan and decreases overall cooling system performance. Keeping the coils clean allows the fans and cooling system to operate more efficiently.

HVAC Filter Cleaning and Replacement

Air filters should be checked regularly (often monthly) and cleaned or replaced when appropriate. Air filters reduce indoor air pollution, increase occupant comfort, and help keep equipment operating efficiently. If the building has a building management system, consider installing a differential pressure switch across filters to send an alarm about premature fouling or overdue filter replacement. Over time, filters become less and less effective as particulate buildup increases. Dirty filters also restrict air flow through the air conditioning or heat pump system, which increases the load on the distribution fans.

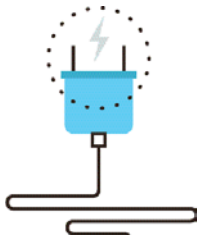
Compressed Air System Maintenance

Compressed air systems require periodic maintenance to operate at peak efficiency. A maintenance plan for compressed air systems should include:

- Inspection, cleaning, and replacement of inlet filter cartridges
- Cleaning of drain traps
- Daily inspection of lubricant levels to reduce unwanted friction
- Inspection of belt condition and tension
- Check for leaks and adjust loose connections
- Overall system cleaning

Contact a qualified technician for help with setting up periodic maintenance schedule.

Plug Load Controls



Reducing plug loads is a common way to decrease your electrical use. Limiting the energy use of plug loads can include increasing occupant awareness, removing under-used equipment, installing hardware controls, and using software controls. Consider enabling the most aggressive power settings on existing devices or install load sensing or occupancy sensing (advanced) power strips⁶. Your local utility may offer incentives or rebates for this equipment.

Water Conservation



Installing dual flush or low-flow toilets and low-flow/waterless urinals are ways to reduce water use. The EPA WaterSense® ratings for urinals is 0.5 gallons per flush (gpf) and for flush valve toilets is 1.28 gpf (this is lower than the current 1.6 gpf federal standard).

For more information regarding water conservation go to the EPA's WaterSense® website⁷ or download a copy of EPA's "WaterSense® at Work: Best Management Practices for Commercial and Institutional Facilities"⁸ to get ideas for creating a water management plan and best practices for a wide range of water using systems.

Water conservation devices that do not reduce hot water consumption will not provide energy savings at the site level, but they may significantly affect your water and sewer usage costs. Any reduction in water use does however ultimately reduce grid-level electricity use since a significant amount of electricity is used to deliver water from reservoirs to end users.

If the facility has detached buildings with a master water meter for the entire campus, check for unnatural wet areas in the lawn or water seeping in the foundation at water pipe penetrations through the foundation. Periodically check overnight meter readings when the facility is unoccupied, and there is no other scheduled water usage.

Manage irrigation systems to use water more effectively outside the building. Adjust spray patterns so that water lands on intended lawns and plantings and not on pavement and walls. Consider installing an evapotranspiration irrigation controller that will prevent over-watering.

Procurement Strategies

Purchasing efficient products reduces energy costs without compromising quality. Consider modifying your procurement policies and language to require ENERGY STAR® or WaterSense® products where available.

⁶ For additional information refer to "Assessing and Reducing Plug and Process Loads in Office Buildings" <http://www.nrel.gov/docs/fy13osti/54175.pdf>, or "Plug Load Best Practices Guide" <http://www.advancedbuildings.net/plug-load-best-practices-guide-offices>.

⁷ <https://www.epa.gov/watersense>.

⁸ <https://www.epa.gov/watersense/watersense-work-0>.

6 ON-SITE GENERATION

You don't have to look far in New Jersey to see one of the thousands of solar electric systems providing clean power to homes, businesses, schools, and government buildings. On-site generation includes both renewable (e.g., solar, wind) and non-renewable (e.g., fuel cells) technologies that generate power to meet all or a portion of the facility's electric energy needs. Also referred to as distributed generation, these systems contribute to greenhouse gas (GHG) emission reductions, demand reductions and reduced customer electricity purchases, which results in improved electric grid reliability through better use of transmission and distribution systems.

Preliminary screenings were performed to determine if an on-site generation measure could be a cost-effective solution for your facility. Before deciding to install an on-site generation system, we recommend conducting a feasibility study to analyze existing energy profiles, siting, interconnection, and the costs associated with the generation project including interconnection costs, departing load charges, and any additional special facilities charges.

6.1 Solar Photovoltaic

Photovoltaic (PV) panels convert sunlight into electricity. Individual panels are combined into an array that produces direct current (DC) electricity. The DC current is converted to alternating current (AC) through an inverter. The inverter is then connected to the building's electrical distribution system.

A preliminary screening based on the facility's electric demand, size and location of free area, and shading elements shows that the facility has high potential for installing a PV array.

The amount of free area, ease of installation (location), and the lack of shading elements contribute to the high potential. A PV array located on the roof may be feasible. If you are interested in pursuing the installation of PV, we recommend conducting a full feasibility study.

The graphic below displays the results of the PV potential screening conducted as a part of this audit. The position of each slider indicates the potential (potential increases to the right) that each factor contributes to the overall site potential.

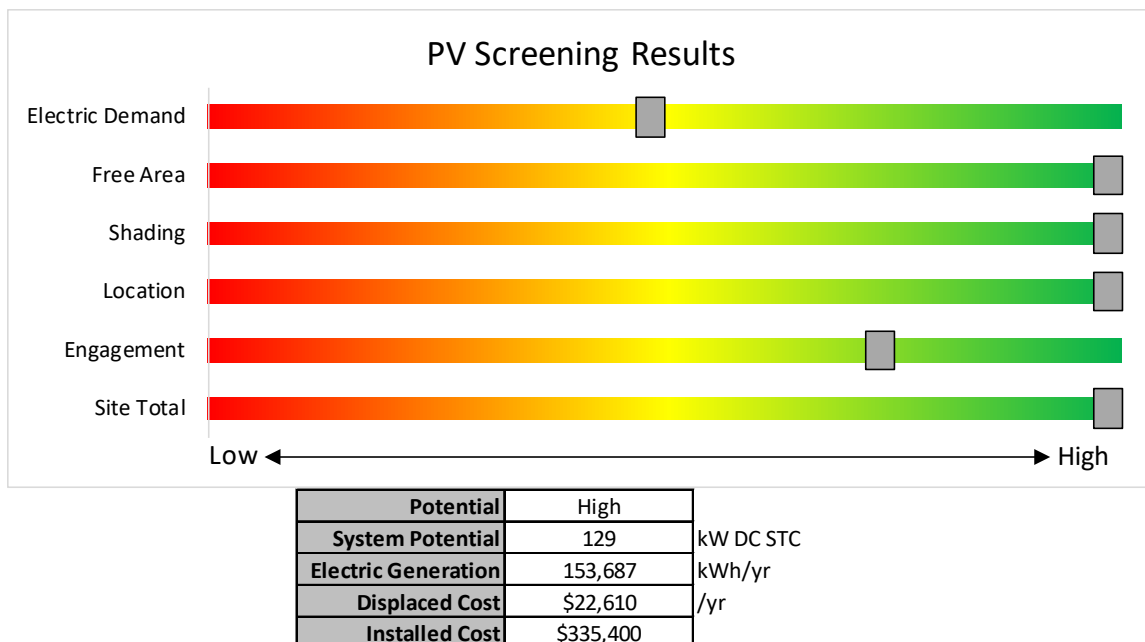


Figure 9 - Photovoltaic Screening

Transition Incentive (TI) Program

The TI program is a bridge between the Legacy SREC Program and a to-be determined Successor Incentive Program. The program is used to register the intent to install solar projects in New Jersey. Rebates are not available for solar projects, but owners of solar projects *must* register their projects prior to the start of construction to establish the project's eligibility to earn TRECs (Transition Incentive Renewable Energy Certificates). The Transition Incentive is structured as a factorized renewable energy certificate. The factors allow the TI Program to provide differentiated financial incentives for different types of solar installation.

Get more information about solar power in New Jersey or find a qualified solar installer who can help you decide if solar is right for your building:

Transition Incentive (TI) Program: <https://www.njcleanenergy.com/renewable-energy/programs/transition-incentive-program>

- **Basic Info on Solar PV in NJ:** www.njcleanenergy.com/whysolar.
- **NJ Solar Market FAQs:** www.njcleanenergy.com/renewable-energy/program-updates-and-background-information/solar-transition/solar-market-faqs.
- **Approved Solar Installers in the NJ Market:** www.njcleanenergy.com/commercial-industrial/programs/nj-smartstart-buildings/tools-and-resources/tradeally/approved_vendorsearch/?id=60&start=1.

6.2 Combined Heat and Power

Combined heat and power (CHP) generates electricity at the facility and puts waste heat energy to good use. Common types of CHP systems are reciprocating engines, microturbines, fuel cells, backpressure steam turbines, and (at large facilities) gas turbines.

CHP systems typically produce a portion of the electric power used on-site, with the balance of electric power needs supplied by the local utility company. The heat is used to supplement (or replace) existing boilers and provide space heating and/or domestic hot water heating. Waste heat can also be routed through absorption chillers for space cooling.

The key criteria used for screening is the amount of time that the CHP system would operate at full load and the facility's ability to use the recovered heat. Facilities with a continuous need for large quantities of waste heat are the best candidates for CHP.

A preliminary screening based on heating and electrical demand, siting, and interconnection shows that the facility has no potential for installing a cost-effective CHP system.

Based on a preliminary analysis, the facility does not appear to meet the minimum requirements for a cost-effective CHP installation. The low or infrequent thermal load, and lack of space for siting the equipment are the most significant factors contributing to the lack of CHP potential.

The graphic below displays the results of the CHP potential screening conducted as a part of this audit. The position of each slider indicates the potential (potential increases to the right) that each factor contributes to the overall site potential.

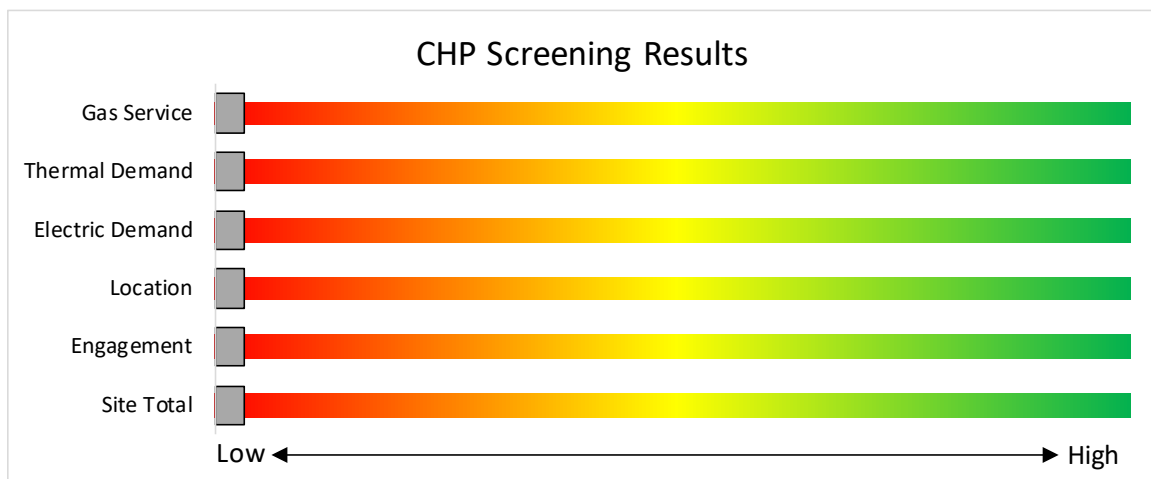


Figure 10 - Combined Heat and Power Screening

Find a qualified firm that specializes in commercial CHP cost assessment and installation:
http://www.njcleanenergy.com/commercial-industrial/programs/nj-smartstart-buildings/tools-and-resources/tradeally/approved_vendorsearch/

7 PROJECT FUNDING AND INCENTIVES

Ready to improve your building's performance? New Jersey's Clean Energy Programs can help. Pick the program that works best for you. Incentive programs that may apply to this facility are identified in the Executive Summary. This section provides an overview of currently available New Jersey's Clean Energy Programs.

	SmartStart <i>Flexibility to install at your own pace</i>	Direct Install <i>Turnkey installation</i>	Pay for Performance <i>Whole building upgrades</i>
Who should use it?	Buildings installing individual measures or small group of measures.	Small to mid-size facilities that can bundle multiple measures together. Average peak demand should be below 200 kW. Not suitable for significant building shell issues.	Mid to large size facilities looking to implement as many measures as possible at one time. Peak demand should be over 200 kW.
How does it work?	Use in-house staff or your preferred contractor.	Pre-approved contractors pass savings along to you via reduced material and labor costs.	Whole-building approach to energy upgrades designed to reduce energy use by at least 15%. The more you save, the higher the incentives.
What are the Incentives?	Fixed incentives for specific energy efficiency measures.	Incentives pay up to 70% of eligible costs, up to \$125,000 per project. You pay the remaining 30% directly to the contractor.	Incentives are paid out in three installments. The first installment is meant to help offset the costs of the initial engineering study. The subsequent incentives are paid based on the level of energy savings up to 50% of the total project cost. See Section 7.3 for all incentive details.
How do I participate?	Submit an application for the specific equipment to be installed.	Contact a participating contractor in your region.	Contact a pre-qualified Partner to develop your Energy Reduction Plan and set your energy savings targets.

Take the next step by visiting www.njcleanenergy.com for program details, applications, and to contact a qualified contractor.

7.1 SmartStart



SmartStart offers incentives for installing prescriptive and custom energy efficiency measures at your facility. This program provides an effective mechanism for securing incentives for energy efficiency measures installed individually or as part of a package of energy upgrades. This program serves most common equipment types and sizes.

SmartStart routinely adds, removes, or modifies incentives from year-to-year for various energy efficient equipment based on market trends and new technologies.

Equipment with Prescriptive Incentives Currently Available:

Electric Chillers
Electric Unitary HVAC
Gas Cooling
Gas Heating
Gas Water Heating
Ground Source Heat Pumps
Lighting

Lighting Controls
Refrigeration Doors
Refrigeration Controls
Refrigerator/Freezer Motors
Food Service Equipment
Variable Frequency Drives

Incentives

The SmartStart Prescriptive program provides fixed incentives for specific energy efficiency measures. Prescriptive incentives vary by equipment type.

SmartStart Custom provides incentives for more unique or specialized technologies or systems that are not addressed through prescriptive incentives. Custom incentives are calculated at \$0.16/kWh and \$1.60/therm based on estimated annual savings. Incentives are capped at 50% of the total installed incremental project cost, or a project cost buy down to a one-year payback (whichever is less). Program incentives are capped at \$500,000 per electric account and \$500,000 per natural gas account, per fiscal year.

How to Participate

Submit an application for the specific equipment to be installed. Many applications are designed as rebates, although others require application approval prior to installation. You can work with your preferred contractor or use internal staff to install measures.

Visit www.njcleanenergy.com/SSB for a detailed program description, instructions for applying, and applications.

7.2 Direct Install



Direct Install is a turnkey program available to existing small to medium-sized facilities with an average peak electric demand that does not exceed 200 kW over the recent 12-month period. You work directly with a pre-approved contractor who will perform a free energy assessment at your facility, identify specific eligible measures, and provide a clear scope of work for

installation of selected measures. Energy efficiency measures may include lighting and lighting controls, refrigeration, HVAC, motors, variable speed drives, and controls.

Based on the site building and utility data provided, the facility does not meet the requirements of the current DI program.

Incentives

The program pays up to 70 percent of the total installed cost of eligible measures, up to \$125,000 per project. Each entity is limited to incentives up to \$250,000 per fiscal year.

How to Participate

To participate in Direct Install, you will need to contact the participating contractor assigned to the region of the state where your facility is located. A complete list of Direct Install program partners is provided on the Direct Install website linked below. The contractor will be paid the measure incentives directly by the program, which will pass on to you in the form of reduced material and implementation costs. This means up to 70 percent of eligible costs are covered by the program, subject to program caps and eligibility, while the remaining 30 percent of the cost is paid to the contractor by the customer.

Detailed program descriptions and applications can be found at: www.njcleanenergy.com/DI.

7.3 Pay for Performance - Existing Buildings



Pay for Performance works for larger customers with a peak demand over 200 kW. The minimum installed scope of work must include at least two unique measures that results in at least 15 percent source energy savings, and lighting cannot make up the majority of the savings.

P4P is a generally a good option for medium-to-large sized facilities looking to implement as many measures as possible under a single project to achieve deep energy savings. This program has an added benefit of addressing measures that may not qualify for other programs. Many facilities pursuing an Energy Savings Improvement Program loan also use this program.

For master metered campuses, such as The College of New Jersey, P4P eligibility is evaluated at the campus level. For the purposes of reporting P4P eligibility is being presented at all of the buildings. Final eligibility will be assessed once all of the reports are completed and will be addressed at the Exit Meeting. If the campus does not meet the 15% savings threshold based on measures identified during the LGEA Program process it is possible that additional measures could be identified at a later point in time, for example through further evaluation or the Energy Savings Improvement Program process.

Incentives

Incentives are based on estimated and achieved energy savings ranging from \$0.18-\$0.22/kWh and \$1.80-\$2.50/therm, capped at the lesser of 50% total project cost, or \$1 million per electric account and \$1 million per natural gas account, per fiscal year, not to exceed \$2 million per project. An incentive of \$0.15/square foot is also available to offset the cost of developing the Energy Reduction Plan (see below) contingent on the project moving forward with measure installation.

How to Participate

Contact one of the pre-approved consultants and contractors ("Partners"). Under direct contract to you, they will help further evaluate the measures identified in this report through development of the energy reduction plan), assist you in implementing selected measures, and verify actual savings one year after the installation. Your Partner will also help you apply for incentives.

Approval of the final scope of work is required by the program prior to installation. Installation can be done by the contractor of your choice (some P4P Partners are also contractors) or by internal staff, but the Partner remains involved throughout construction to ensure compliance with the program requirements.

Detailed program descriptions, instructions for applying, applications and list of Partners can be found at www.njcleanenergy.com/P4P.

7.4 Combined Heat and Power

The Combined Heat & Power (CHP) program provides incentives for eligible CHP or waste heat to power (WHP) projects. Eligible CHP or WHP projects must achieve an annual system efficiency of at least 65% (lower heating value, or LHV), based on total energy input and total utilized energy output. Mechanical energy may be included in the efficiency evaluation.

Incentives

Eligible Technologies	Size (Installed Rated Capacity) ¹	Incentive (\$/kW)	% of Total Cost Cap per Project ³	\$ Cap per Project ³		
Powered by non-renewable or renewable fuel source ⁴	≤500 kW	\$2,000	30-40% ²	\$2 million		
Gas Internal Combustion Engine	>500 kW - 1 MW	\$1,000				
Gas Combustion Turbine	> 1 MW - 3 MW	\$550	30%	\$3 million		
Microturbine	>3 MW					
Fuel Cells with Heat Recovery						
Waste Heat to Power*	<1 MW	\$1,000	30%	\$2 million		
	> 1MW	\$500		\$3 million		

*Waste Heat to Power: Powered by non-renewable fuel source, heat recovery or other mechanical recovery from existing equipment utilizing new electric generation equipment (e.g. steam turbine).

Check the NJCEP website for details on program availability, current incentive levels, and requirements.

How to Participate

You work with a qualified developer or consulting firm to complete the CHP application. Once the application is approved the project can be installed. Information about the CHP program can be found at www.njcleanenergy.com/CHP.

7.5 Energy Savings Improvement Program

The Energy Savings Improvement Program (ESIP) serves New Jersey's government agencies by financing energy projects. An ESIP is a type of performance contract, whereby school districts, counties, municipalities, housing authorities and other public and state entities enter in to contracts to help finance building energy upgrades. Annual payments are lower than the savings projected from the ECMs, ensuring that ESIP projects are cash flow positive for the life of the contract.

ESIP provides government agencies in New Jersey with a flexible tool to improve and reduce energy usage with minimal expenditure of new financial resources. NJCEP incentive programs described above can also be used to help further reduce the total project cost of eligible measures.

How to Participate

This LGEA report is the first step to participating in ESIP. Next, you will need to select an approach for implementing the desired ECMs:

- (1) Use an energy services company or "ESCO."
- (2) Use independent engineers and other specialists, or your own qualified staff, to provide and manage the requirements of the program through bonds or lease obligations.
- (3) Use a hybrid approach of the two options described above where the ESCO is used for some services and independent engineers, or other specialists or qualified staff, are used to deliver other requirements of the program.

After adopting a resolution with a chosen implementation approach, the development of the energy savings plan (ESP) can begin. The ESP demonstrates that the total project costs of the ECMs are offset by the energy savings over the financing term, not to exceed 15 years. The verified savings will then be used to pay for the financing.

The ESIP approach may not be appropriate for all energy conservation and energy efficiency improvements. Carefully consider all alternatives to develop an approach that best meets your needs. A detailed program descriptions and application can be found at www.njcleanenergy.com/ESIP.

ESIP is a program delivered directly by the NJBPU and is not an NJCEP incentive program. As mentioned above, you can use NJCEP incentive programs to help further reduce costs when developing the energy savings plan. Refer to the ESIP guidelines at the link above for further information and guidance on next steps.

7.6 Transition Incentive (TI) Program

The TI program is a bridge between the Legacy SREC Program and a to-be determined Successor Incentive Program. The program is used to register the intent to install solar projects in New Jersey. Rebates are not available for solar projects, but owners of solar projects *must* register their projects prior to the start of construction to establish the project's eligibility to earn TRECs (Transition Incentive Renewable Energy Certificates). The Transition Incentive is structured as a factorized renewable energy certificate. The factors allow the TI Program to provide differentiated financial incentives for different types of solar installations. NJBPU calculates the value of a Transition Renewable Energy Certificate (TREC) by multiplying the base compensation rate (\$152/MWh) by the project's assigned factor (i.e. $\$152 \times 0.85 = \$129.20/\text{MWh}$). The TREC factors are defined based on the chart below:

Project Type	Factor
Subsection (t): landfill, brownfield, areas of historic fill	1.00
Grid supply (Subsection (r)) rooftop	1.00
Net metered non-residential rooftop and carport	1.00
Community solar	0.85
Grid supply (Subsection (r)) ground mount	0.60
Net metered residential ground mount	0.60
Net metered residential rooftop and carport	0.60
Net metered non-residential ground mount	0.60

After the registration is accepted, construction is complete, and final paperwork has been submitted and is deemed complete, the project is issued a New Jersey certification number, which enables it to generate New Jersey TRECs.

Eligible projects may generate TRECs for 15 years following the commencement of commercial operations (also referred to as the "Transition Incentive Qualification Life"). After 15 years, projects may be eligible for a NJ Class I REC.

TRECs will be used by the identified compliance entities to satisfy a compliance obligation tied to a new Transition Incentive Renewable Portfolio Standard ("TI-RPS"), which will exist in parallel with, and completely separate from, the existing Solar RPS for Legacy SRECs. The TI-RPS is a carve-out of the current Class I RPS requirement. The creation of TRECs is based upon metered generation supplied to PJM-EIS General Attribute Tracking System ("GATS") by the owners of eligible facilities or their agents. GATS would create one TREC for each MWh of energy produced from a qualified facility.

TRECs will be purchased monthly by a TREC Administrator who will allocate the TRECs to the Load Serving Entities (BGS Providers and Third-Party Suppliers) annually based on their market share of retail electricity sold during the relevant Energy Year.

Solar projects help the State of New Jersey reach renewable energy goals outlined in the state's Energy Master Plan. The Transition Incentive Program online portal is now open to new applications effective May 1, 2020. There are instructions on "How and When to Transfer my SRP Registration to the Transition Incentive Program". If you are considering installing solar photovoltaics on your building, visit the following link for more information:

<https://www.njcleanenergy.com/renewable-energy/programs/transition-incentive-program>

8 PROJECT DEVELOPMENT

Energy conservation measures (ECMs) have been identified for your site and their energy and economic analyses are provided within this LGEA report. The next steps with project development are to set goals and create a comprehensive project plan. The graphic below provides an overview of the process flow for a typical energy efficiency or renewable energy project. We recommend implementing as many ECMs as possible prior to undertaking a feasibility study for a renewable project. The cyclical nature of this process flow demonstrates the ongoing work required to continually improve building energy efficiency over time. If your building(s) scope of work is relatively simple to implement or small in scope, the measurement and verification (M&V) step may not be required. It should be noted through a typical project cycle, there will be changes in costs based on specific scopes of work, contractor selections, design considerations, construction, etc. The estimated costs provided throughout this LGEA report demonstrate the unburdened turn-key material and labor cost only. There will be contingencies and additional costs at the time of implementation. We recommend comprehensive project planning includes the review of multiple bids for project work, incorporate potential operational & maintenance (O&M) cost savings and maximize your incentive potential.

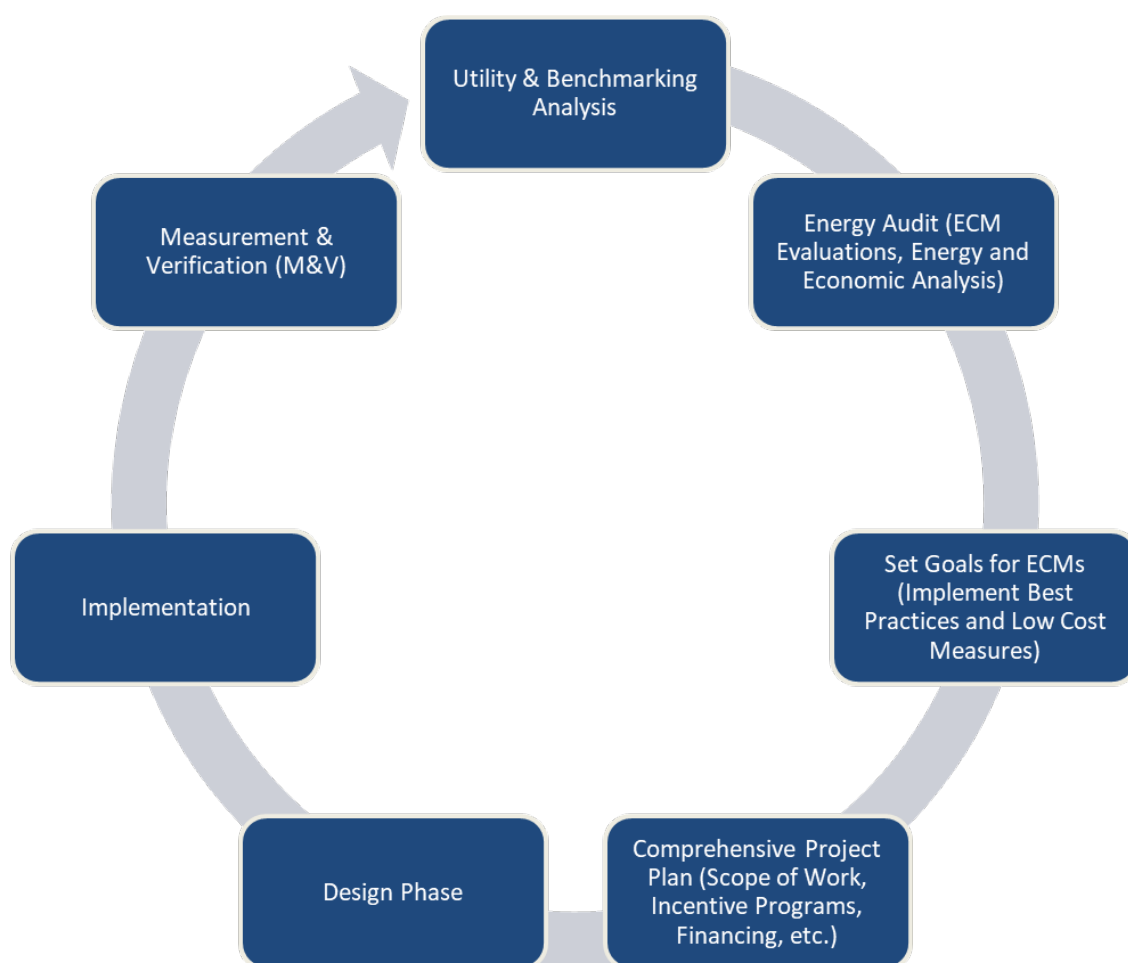


Figure 11 – Project Development Cycle

9 ENERGY PURCHASING AND PROCUREMENT STRATEGIES

9.1 Retail Electric Supply Options

Energy deregulation in New Jersey has increased energy buyers' options by separating the function of electricity distribution from that of electricity supply. So, though you may choose a different company from which to buy your electric power, responsibility for your facility's interconnection to the grid and repair to local power distribution will still reside with the traditional utility company serving your region.

If your facility is not purchasing electricity from a third-party supplier, consider shopping for a reduced rate from third-party electric suppliers. If your facility already buys electricity from a third-party supplier, review and compare prices at the end of each contract year.

A list of licensed third-party electric suppliers is available at the NJBPU website⁹.

9.2 Retail Natural Gas Supply Options

The natural gas market in New Jersey is also deregulated. Most customers that remain with the utility for natural gas service pay rates that are market-based and that fluctuate monthly. The utility provides basic gas supply service (BGSS) to customers who choose not to buy from a third-party supplier for natural gas commodity.

A customer's decision about whether to buy natural gas from a retail supplier typically depends on whether a customer prefers budget certainty and/or longer-term rate stability. Customers can secure longer-term fixed prices by signing up for service through a third-party retail natural gas supplier. Many larger natural gas customers may seek the assistance of a professional consultant to assist in their procurement process.

If your facility does not already purchase natural gas from a third-party supplier, consider shopping for a reduced rate from third-party natural gas suppliers. If your facility already purchases natural gas from a third-party supplier, review and compare prices at the end of each contract year.

A list of licensed third-party natural gas suppliers is available at the NJBPU website¹⁰.

⁹ www.state.nj.us/bpu/commercial/shopping.html.

¹⁰ www.state.nj.us/bpu/commercial/shopping.html.

APPENDIX A: EQUIPMENT INVENTORY & RECOMMENDATIONS

Lighting Inventory & Recommendations

	Existing Conditions						Proposed Conditions								Energy Impact & Financial Analysis							
Location	Fixture Quantity	Fixture Description	Control System	Light Level	Watts per Fixture	Annual Operating Hours	ECM #	Fixture Recommendation	Add Controls?	Fixture Quantity	Fixture Description	Control System	Watts per Fixture	Annual Operating Hours	Total Peak kW Savings	Total Annual kWh Savings	Total Annual MMBtu Savings	Total Annual Energy Cost Savings	Estimated M&L Cost (\$)	Total Incentives	Simple Payback w/ Incentives in Years	
Electrical Room 121C	1	Linear Fluorescent - T8: 4' T8 (32W) - 2L	Wall Switch	S	62	5,250	2	Relamp	No	1	LED - Linear Tubes: (2) 4' Lamps	Wall Switch	29	5,250	0.0	173	0	\$25	\$37	\$10	1.0	
2nd Floor Hallway	2	Exit Signs: LED - 2 W Lamp	None		6	8,760		None	No	2	Exit Signs: LED - 2 W Lamp	None	6	8,760	0.0	0	0	\$0	\$0	\$0	0.0	
2nd Floor Hallway	10	Linear Fluorescent - T8: 4' T8 (32W) - 2L	Other	S	62	5,082	2, 4	Relamp	Yes	10	LED - Linear Tubes: (2) 4' Lamps	High/Low Control	29	3,507	0.2	2,134	0	\$312	\$815	\$450	1.2	
2nd Floor Periodicals	13	Compact Fluorescent: (1) 24W 4-PIN Lamp	Other	S	24	5,082	2, 3	Relamp	Yes	13	LED Lamps: Plug-In Lamp	Occupancy Sensor	17	3,507	0.1	820	0	\$120	\$595	\$100	4.1	
2nd Floor Periodicals	27	Compact Fluorescent: (2) 13W 2-PIN Lamps	Wall Switch	S	26	2,625	2	Relamp	No	27	LED Lamps: Plug-In Lamp	Wall Switch	18	2,625	0.1	553	0	\$81	\$675	\$54	7.7	
2nd Floor Periodicals	6	Exit Signs: LED - 2 W Lamp	None		6	8,760		None	No	6	Exit Signs: LED - 2 W Lamp	None	6	8,760	0.0	0	0	\$0	\$0	\$0	0.0	
2nd Floor Periodicals	244	Linear Fluorescent - T8: 4' T8 (32W) - 2L	Other	S	62	5,082	2, 3	Relamp	Yes	244	LED - Linear Tubes: (2) 4' Lamps	Occupancy Sensor	29	3,507	5.1	52,068	-12	\$7,609	\$13,500	\$3,035	1.4	
3rd Floor Reading Area	12	Compact Fluorescent: (1) 24W 4-PIN Lamp	Other	S	24	5,082	2, 3	Relamp	Yes	12	LED Lamps: Plug-In Lamp	Occupancy Sensor	17	3,507	0.1	757	0	\$111	\$570	\$95	4.3	
3rd Floor Reading Area	4	Compact Fluorescent: (4) 13W 2-PIN Lamps	Other	S	52	5,082	2, 3	Relamp	Yes	4	LED Lamps: Plug-In Lamp	Occupancy Sensor	36	3,507	0.1	546	0	\$80	\$470	\$51	5.2	
3rd Floor Reading Area	12	Compact Fluorescent: (2) 13W 2-PIN Lamps	Wall Switch	S	26	2,625	2	Relamp	No	12	LED Lamps: Plug-In Lamp	Wall Switch	18	2,625	0.0	246	0	\$36	\$300	\$24	7.7	
3rd Floor Reading Area	1	Exit Signs: LED - 2 W Lamp	None		6	8,760		None	No	1	Exit Signs: LED - 2 W Lamp	None	6	8,760	0.0	0	0	\$0	\$0	\$0	0.0	
3rd Floor Reading Area	19	Compact Fluorescent: (1) 13W 2-PIN Lamp	Other	S	13	5,082	2, 3	Relamp	Yes	19	LED Lamps: Plug-In Lamp	Occupancy Sensor	9	3,507	0.1	649	0	\$95	\$778	\$89	7.3	
3rd Floor Reading Area	30	Linear Fluorescent - T8: 4' T8 (32W) - 3L	Other	S	93	5,082	2, 3	Relamp	Yes	30	LED - Linear Tubes: (3) 4' Lamps	Occupancy Sensor	44	3,507	0.9	9,603	-2	\$1,403	\$2,183	\$520	1.2	
3rd Floor Restrooms Hallway	2	Exit Signs: LED - 2 W Lamp	None		6	8,760		None	No	2	Exit Signs: LED - 2 W Lamp	None	6	8,760	0.0	0	0	\$0	\$0	\$0	0.0	
3rd Floor Restrooms Hallway	13	Linear Fluorescent - T8: 4' T8 (32W) - 2L	Other	S	62	5,082	2, 4	Relamp	Yes	13	LED - Linear Tubes: (2) 4' Lamps	High/Low Control	29	3,507	0.3	2,774	-1	\$405	\$925	\$580	0.9	
4th Floor Restrooms Hallway	21	Linear Fluorescent - T8: 4' T8 (32W) - 2L	Other	S	62	5,082	2, 4	Relamp	Yes	21	LED - Linear Tubes: (2) 4' Lamps	High/Low Control	29	3,507	0.4	4,481	-1	\$655	\$1,667	\$945	1.1	
Auditorium	4	Exit Signs: LED - 2 W Lamp	None		6	8,760		None	No	4	Exit Signs: LED - 2 W Lamp	None	6	8,760	0.0	0	0	\$0	\$0	\$0	0.0	
Auditorium	4	Halogen Incandescent: R7 Base Halogen Lamp	Wall Switch	S	150	5,250	1, 3	Fixture Replacement	Yes	4	LED - Fixtures: Track or Mono-Point Directional Lighting Fixtures	Occupancy Sensor	23	3,623	0.3	2,824	-1	\$413	\$1,650	\$155	3.6	
Auditorium	4	Halogen Incandescent: R7 Base Halogen Lamp	Wall Switch	S	250	5,250	1, 3	Fixture Replacement	Yes	4	LED - Fixtures: Track or Mono-Point Directional Lighting Fixtures	Occupancy Sensor	38	3,623	0.4	4,707	-1	\$688	\$1,650	\$155	2.2	
Auditorium	59	Halogen Incandescent: A21 Screw In Lamp	Wall Switch	S	80	5,250	2, 3	Relamp	Yes	59	LED Lamps: A19 Lamps	Occupancy Sensor	12	3,623	2.1	22,215	-5	\$3,247	\$2,096	\$199	0.6	
Back Entrance	9	Compact Fluorescent: (1) 26W 4-PIN Lamp	Other	S	26	5,082	2, 3	Relamp	Yes	9	LED Lamps: Plug-In Lamp	Occupancy Sensor	18	3,507	0.1	615	0	\$90	\$495	\$80	4.6	
Back Entrance	2	Compact Fluorescent: (2) 26W 4-PIN Lamps	Wall Switch	S	52	5,250	2	Relamp	No	2	LED Lamps: Plug-In Lamp	Wall Switch	36	5,250	0.0	164	0	\$24	\$100	\$20	3.3	
Back Entrance	1	Exit Signs: LED - 2 W Lamp	None		6	8,760		None	No	1	Exit Signs: LED - 2 W Lamp	None	6	8,760	0.0	0	0	\$0	\$0	\$0	0.0	
Basement - Bound Periodicals A/N	4	Exit Signs: LED - 2 W Lamp	None		6	8,760		None	No	4	Exit Signs: LED - 2 W Lamp	None	6	8,760	0.0	0	0	\$0	\$0	\$0	0.0	
Basement - Bound Periodicals A-N	20	Linear Fluorescent - T8: 4' T8 (32W) - 1L	Other	S	32	5,082	2, 3	Relamp	Yes	20	LED - Linear Tubes: (1) 4' Lamp	Occupancy Sensor	15	3,507	0.2	2,236	-1	\$327	\$905	\$170	2.3	

Existing Conditions							Proposed Conditions							Energy Impact & Financial Analysis							
Location	Fixture Quantity	Fixture Description	Control System	Light Level	Watts per Fixture	Annual Operating Hours	ECM #	Fixture Recommendation	Add Controls?	Fixture Quantity	Fixture Description	Control System	Watts per Fixture	Annual Operating Hours	Total Peak kW Savings	Total Annual kWh Savings	Total Annual MMBtu Savings	Total Annual Energy Cost Savings	Estimated M&L Cost (\$)	Total Incentives	Simple Payback w/ Incentives in Years
Basement - Bound Periodicals A-N	70	Linear Fluorescent - T8: 4' T8 (32W) - 2L	Other	S	62	5,082	2, 3	Relamp	Yes	70	LED - Linear Tubes: (2) 4' Lamps	Occupancy Sensor	29	3,507	1.5	14,938	-3	\$2,183	\$3,906	\$875	1.4
Basement - Bound Periodicals P-Z	4	Exit Signs: LED - 2 W Lamp	None		6	8,760		None	No	4	Exit Signs: LED - 2 W Lamp	None	6	8,760	0.0	0	0	\$0	\$0	\$0	0.0
Basement - Bound Periodicals P-Z	14	Linear Fluorescent - T8: 4' T8 (32W) - 1L	Other	S	32	5,082	2, 3	Relamp	Yes	14	LED - Linear Tubes: (1) 4' Lamp	Occupancy Sensor	15	3,507	0.2	1,565	0	\$229	\$526	\$105	1.8
Basement - Bound Periodicals P-Z	60	Linear Fluorescent - T8: 4' T8 (32W) - 2L	Other	S	62	5,082	2, 3	Relamp	Yes	60	LED - Linear Tubes: (2) 4' Lamps	Occupancy Sensor	29	3,507	1.3	12,804	-3	\$1,871	\$3,271	\$740	1.4
Basement - East Mech Room	3	Exit Signs: LED - 2 W Lamp	None		6	8,760		None	No	3	Exit Signs: LED - 2 W Lamp	None	6	8,760	0.0	0	0	\$0	\$0	\$0	0.0
Basement - East Mech Room	25	Linear Fluorescent - T8: 4' T8 (32W) - 2L	Wall Switch	S	62	5,250	2	Relamp	No	25	LED - Linear Tubes: (2) 4' Lamps	Wall Switch	29	5,250	0.4	4,331	-1	\$633	\$913	\$250	1.0
Basement- West Mech arm	3	Exit Signs: LED - 2 W Lamp	None		6	8,760		None	No	3	Exit Signs: LED - 2 W Lamp	None	6	8,760	0.0	0	0	\$0	\$0	\$0	0.0
Basement- West Mech arm	35	Linear Fluorescent - T8: 4' T8 (32W) - 2L	Wall Switch	S	62	5,250	2, 3	Relamp	Yes	35	LED - Linear Tubes: (2) 4' Lamps	Occupancy Sensor	29	3,623	0.7	7,716	-2	\$1,128	\$2,088	\$455	1.4
Basement Foyer	2	Exit Signs: LED - 2 W Lamp	None		6	8,760		None	No	2	Exit Signs: LED - 2 W Lamp	None	6	8,760	0.0	0	0	\$0	\$0	\$0	0.0
Basement Foyer	4	Linear Fluorescent - T8: 4' T8 (32W) - 2L	Wall Switch	S	62	5,250	2, 3	Relamp	Yes	4	LED - Linear Tubes: (2) 4' Lamps	Occupancy Sensor	29	3,623	0.1	882	0	\$129	\$416	\$75	2.6
Basement Room 2	5	Compact Fluorescent: (1) 26W 4-PIN Lamp	Wall Switch	S	26	5,250	2, 3	Relamp	Yes	5	LED Lamps: Plug-In Lamp	Occupancy Sensor	18	3,623	0.0	353	0	\$52	\$395	\$60	6.5
Basement Room 2	28	Linear Fluorescent - T8: 4' T8 (32W) - 2L	Wall Switch	S	62	5,250	2, 3	Relamp	Yes	28	LED - Linear Tubes: (2) 4' Lamps	Occupancy Sensor	29	3,623	0.6	6,173	-1	\$902	\$1,562	\$350	1.3
Basement Room 4	6	Compact Fluorescent: (1) 26W 4-PIN Lamp	Wall Switch	S	26	5,250	2, 3	Relamp	Yes	6	LED Lamps: Plug-In Lamp	Occupancy Sensor	18	3,623	0.0	423	0	\$62	\$420	\$65	5.7
Basement Room 4	30	Linear Fluorescent - T8: 4' T8 (32W) - 2L	Wall Switch	S	62	5,250	2, 3	Relamp	Yes	30	LED - Linear Tubes: (2) 4' Lamps	Occupancy Sensor	29	3,623	0.6	6,613	-2	\$967	\$1,635	\$370	1.3
Basement Room 5	5	Compact Fluorescent: (1) 26W 4-PIN Lamp	Wall Switch	S	26	5,250	2, 3	Relamp	Yes	5	LED Lamps: Plug-In Lamp	Occupancy Sensor	18	3,623	0.0	353	0	\$52	\$395	\$60	6.5
Basement Room 5	35	Linear Fluorescent - T8: 4' T8 (32W) - 2L	Wall Switch	S	62	5,250	2, 3	Relamp	Yes	35	LED - Linear Tubes: (2) 4' Lamps	Occupancy Sensor	29	3,623	0.7	7,716	-2	\$1,128	\$2,088	\$455	1.4
Basement Storage Hallway	2	Exit Signs: LED - 2 W Lamp	None		6	8,760		None	No	2	Exit Signs: LED - 2 W Lamp	None	6	8,760	0.0	0	0	\$0	\$0	\$0	0.0
Basement Storage Hallway	5	Linear Fluorescent - T8: 4' T8 (32W) - 2L	Wall Switch	S	62	5,250	2, 4	Relamp	Yes	5	LED - Linear Tubes: (2) 4' Lamps	High/Low Control	29	3,623	0.1	1,102	0	\$161	\$408	\$225	1.1
Caffe	6	Compact Fluorescent: (1) 24W 4-PIN Lamp	Other	S	24	5,082	2, 3	Relamp	Yes	6	LED Lamps: Plug-In Lamp	Occupancy Sensor	17	3,507	0.0	378	0	\$55	\$420	\$65	6.4
Caffe	5	Compact Fluorescent: (4) 13W 2-PIN Lamps	Other	S	52	5,082	2, 3	Relamp	Yes	5	LED Lamps: Plug-In Lamp	Occupancy Sensor	36	3,507	0.1	683	0	\$100	\$520	\$55	4.7
Caffe	32	Compact Fluorescent: (1) 26W 4-PIN Lamp	Other	S	26	5,082	2, 3	Relamp	Yes	32	LED Lamps: Plug-In Lamp	Occupancy Sensor	18	3,507	0.2	2,186	-1	\$319	\$1,610	\$265	4.2
Caffe	5	Exit Signs: LED - 2 W Lamp	None		6	8,760		None	No	5	Exit Signs: LED - 2 W Lamp	None	6	8,760	0.0	0	0	\$0	\$0	\$0	0.0
Caffe	14	Linear Fluorescent - T8: 4' T8 (32W) - 1L	Other	S	32	5,082	2, 3	Relamp	Yes	14	LED - Linear Tubes: (1) 4' Lamp	Occupancy Sensor	15	3,507	0.2	1,565	0	\$229	\$526	\$105	1.8
Caffe	3	Linear Fluorescent - T8: 4' T8 (32W) - 2L	Other	S	62	5,082	2, 3	Relamp	Yes	3	LED - Linear Tubes: (2) 4' Lamps	Occupancy Sensor	29	3,507	0.1	640	0	\$94	\$380	\$65	3.4
Closet	1	Linear Fluorescent - T8: 4' T8 (32W) - 2L	Wall Switch	S	62	5,250	2	Relamp	No	1	LED - Linear Tubes: (2) 4' Lamps	Wall Switch	29	5,250	0.0	173	0	\$25	\$37	\$10	1.0

Existing Conditions							Proposed Conditions							Energy Impact & Financial Analysis							
Location	Fixture Quantity	Fixture Description	Control System	Light Level	Watts per Fixture	Annual Operating Hours	ECM #	Fixture Recommendation	Add Controls?	Fixture Quantity	Fixture Description	Control System	Watts per Fixture	Annual Operating Hours	Total Peak kW Savings	Total Annual kWh Savings	Total Annual MMBtu Savings	Total Annual Energy Cost Savings	Estimated M&L Cost (\$)	Total Incentives	Simple Payback w/ Incentives in Years
Collaborative Learning Area	12	Compact Fluorescent: (2) 13W 2-PIN Lamps	Wall Switch	S	26	5,250	2	Relamp	No	12	LED Lamps: Plug-In Lamp	Wall Switch	18	5,250	0.0	491	0	\$72	\$300	\$24	3.8
Collaborative Learning Area	12	Linear Fluorescent - T8: 4' T8 (32W) - 3L	Other	S	93	5,082	2, 3	Relamp	Yes	12	LED - Linear Tubes: (3) 4' Lamps	Occupancy Sensor	44	3,507	0.4	3,841	-1	\$561	\$927	\$215	1.3
Common Area - Group Study	13	Linear Fluorescent - T8: 4' T8 (32W) - 2L	Other	S	62	5,082	2, 3	Relamp	Yes	13	LED - Linear Tubes: (2) 4' Lamps	Occupancy Sensor	29	3,507	0.3	2,774	-1	\$405	\$745	\$165	1.4
Common Area 4th Floor	2	Compact Fluorescent: (2) 13W 2-PIN Lamps	Wall Switch	S	26	5,250	2	Relamp	No	2	LED Lamps: Plug-In Lamp	Wall Switch	18	5,250	0.0	82	0	\$12	\$50	\$4	3.8
Common Area 4th Floor	2	Exit Signs: LED - 2 W Lamp	None		6	8,760		None	No	2	Exit Signs: LED - 2 W Lamp	None	6	8,760	0.0	0	0	\$0	\$0	\$0	0.0
Common Area 4th Floor	20	Linear Fluorescent - T8: 4' T8 (32W) - 2L	Other	S	62	5,082	2, 3	Relamp	Yes	20	LED - Linear Tubes: (2) 4' Lamps	Occupancy Sensor	29	3,507	0.4	4,268	-1	\$624	\$1,270	\$270	1.6
Common Area Restrooms	2	Linear Fluorescent - T8: 4' T8 (32W) - 1L	Wall Switch	S	32	5,250	2	Relamp	No	2	LED - Linear Tubes: (1) 4' Lamp	Wall Switch	15	5,250	0.0	184	0	\$27	\$37	\$10	1.0
Conference 303A	8	Compact Fluorescent: (1) 26W 4-PIN Lamp	Wall Switch	S	26	5,250	2, 3	Relamp	Yes	8	LED Lamps: Plug-In Lamp	Occupancy Sensor	18	3,623	0.1	565	0	\$83	\$470	\$75	4.8
Conference 303A	6	Linear Fluorescent - T8: 4' T8 (32W) - 2L	Wall Switch	S	62	5,250	2, 3	Relamp	Yes	6	LED - Linear Tubes: (2) 4' Lamps	Occupancy Sensor	29	3,623	0.1	1,323	0	\$193	\$489	\$95	2.0
Conference Room 123	12	Compact Fluorescent: (1) 26W 4-PIN Lamp	Wall Switch	S	26	5,250	2, 3	Relamp	Yes	12	LED Lamps: Plug-In Lamp	Occupancy Sensor	18	3,623	0.1	847	0	\$124	\$570	\$95	3.8
Conference Room 123	1	Compact Fluorescent: (2) 26W 4-PIN Lamps	Wall Switch	S	52	5,250	2	Relamp	No	1	LED Lamps: Plug-In Lamp	Wall Switch	36	5,250	0.0	82	0	\$12	\$50	\$10	3.3
Copy Area	2	Linear Fluorescent - T8: 4' T8 (32W) - 2L	Wall Switch	S	62	5,250	2, 3	Relamp	Yes	2	LED - Linear Tubes: (2) 4' Lamps	Occupancy Sensor	29	3,623	0.0	441	0	\$64	\$189	\$40	2.3
Copy Room	2	Linear Fluorescent - T8: 4' T8 (32W) - 2L	Wall Switch	S	62	5,250	2, 3	Relamp	Yes	2	LED - Linear Tubes: (2) 4' Lamps	Occupancy Sensor	29	3,623	0.0	441	0	\$64	\$189	\$40	2.3
Copy Room 120	3	Compact Fluorescent: (1) 26W 4-PIN Lamp	Wall Switch	S	26	5,250	2	Relamp	No	3	LED Lamps: Plug-In Lamp	Wall Switch	18	5,250	0.0	123	0	\$18	\$75	\$15	3.3
DVD Storage Area	21	Linear Fluorescent - T8: 4' T8 (32W) - 2L	Wall Switch	S	62	5,250	2, 3	Relamp	Yes	21	LED - Linear Tubes: (2) 4' Lamps	Occupancy Sensor	29	3,623	0.4	4,629	-1	\$677	\$1,307	\$280	1.5
Electrical Room 020	1	Linear Fluorescent - T8: 4' T8 (32W) - 2L	Wall Switch	S	62	5,250	2	Relamp	No	1	LED - Linear Tubes: (2) 4' Lamps	Wall Switch	29	5,250	0.0	173	0	\$25	\$37	\$10	1.0
Electrical Room 107	1	Linear Fluorescent - T8: 4' T8 (32W) - 2L	Wall Switch	S	62	5,250	2	Relamp	No	1	LED - Linear Tubes: (2) 4' Lamps	Wall Switch	29	5,250	0.0	173	0	\$25	\$37	\$10	1.0
Electrical Room 13	1	Linear Fluorescent - T8: 4' T8 (32W) - 2L	Wall Switch	S	62	5,250	2	Relamp	No	1	LED - Linear Tubes: (2) 4' Lamps	Wall Switch	29	5,250	0.0	173	0	\$25	\$37	\$10	1.0
Electrical Room 302	1	Linear Fluorescent - T8: 4' T8 (32W) - 2L	Wall Switch	S	62	5,250	2	Relamp	No	1	LED - Linear Tubes: (2) 4' Lamps	Wall Switch	29	5,250	0.0	173	0	\$25	\$37	\$10	1.0
Electrical Room 318	1	Linear Fluorescent - T8: 4' T8 (32W) - 2L	Wall Switch	S	62	5,250	2	Relamp	No	1	LED - Linear Tubes: (2) 4' Lamps	Wall Switch	29	5,250	0.0	173	0	\$25	\$37	\$10	1.0
Electrical Room 420	1	Linear Fluorescent - T8: 4' T8 (32W) - 2L	Wall Switch	S	62	5,250	2	Relamp	No	1	LED - Linear Tubes: (2) 4' Lamps	Wall Switch	29	5,250	0.0	173	0	\$25	\$37	\$10	1.0
Back Elevator Recessed light	9	Compact Fluorescent: (1) 26W 4-PIN Lamp	Wall Switch		26	5,250	2	Relamp	No	9	LED Lamps: Plug-In Lamp	Wall Switch	18	5,250	0.0	369	0	\$54	\$225	\$45	3.3
Elevator Room 12	4	Linear Fluorescent - T8: 4' T8 (32W) - 2L	Wall Switch	S	62	2,100	2	Relamp	No	4	LED - Linear Tubes: (2) 4' Lamps	Wall Switch	29	2,100	0.1	277	0	\$41	\$146	\$40	2.6
Elevator Walkway Light	18	LED - Fixtures: Outdoor Pole/Arm-Mounted Area/Roadway Fixture	Timeclock		30	4,380		None	No	18	LED - Fixtures: Outdoor Pole/Arm-Mounted Area/Roadway Fixture	Timeclock	30	4,380	0.0	0	0	\$0	\$0	\$0	0.0
Exterior Back Hall	16	Compact Fluorescent: (1) 42W 4-PIN Lamp	Timeclock		42	4,380	2	Relamp	No	16	LED Lamps: G25 Lamps	Timeclock	29	4,380	0.0	883	0	\$130	\$400	\$80	2.5

Existing Conditions							Proposed Conditions							Energy Impact & Financial Analysis							
Location	Fixture Quantity	Fixture Description	Control System	Light Level	Watts per Fixture	Annual Operating Hours	ECM #	Fixture Recommendation	Add Controls?	Fixture Quantity	Fixture Description	Control System	Watts per Fixture	Annual Operating Hours	Total Peak kW Savings	Total Annual kWh Savings	Total Annual MMBtu Savings	Total Annual Energy Cost Savings	Estimated M&L Cost (\$)	Total Incentives	Simple Payback w/ Incentives in Years
Exterior Front Hall	16	Compact Fluorescent: (1) 42W 4-PIN Lamp	Timeclock		42	4,380	2	Relamp	No	16	LED Lamps: G25 Lamps	Timeclock	29	4,380	0.0	883	0	\$130	\$400	\$80	2.5
Exterior Walkway Light	1	Metal Halide: (1) 400W Lamp	Timeclock		458	4,380	1	Fixture Replacement	No	1	LED - Fixtures: Outdoor Pole/Arm-Mounted Area/Roadway Fixture	Timeclock	120	4,380	0.0	1,480	0	\$218	\$560	\$100	2.1
Exterior Wall Pack	2	LED - Fixtures: 9W LED Fixtures	Photocell		9	4,380		None	No	2	LED - Fixtures: 9W LED Fixtures	Photocell	9	4,380	0.0	0	0	\$0	\$0	\$0	0.0
General Collection A-F	3	Compact Fluorescent: (1) 24W 4-PIN Lamp	Other	S	24	5,082	2	Relamp	No	3	LED Lamps: Plug-In Lamp	Other	17	5,082	0.0	110	0	\$16	\$75	\$15	3.7
General Collection A-F	7	Exit Signs: LED - 2 W Lamp	None		6	8,760		None	No	7	Exit Signs: LED - 2 W Lamp	None	6	8,760	0.0	0	0	\$0	\$0	\$0	0.0
General Collection A-F	128	Linear Fluorescent - T8: 4' T8 (32W) - 2L	Other	S	62	5,082	2, 3	Relamp	Yes	128	LED - Linear Tubes: (2) 4' Lamps	Occupancy Sensor	29	3,507	2.7	27,314	-6	\$3,992	\$7,104	\$1,595	1.4
General Collection G-L	2	Compact Fluorescent: (1) 24W 4-PIN Lamp	Other	S	24	5,082	2	Relamp	No	2	LED Lamps: Plug-In Lamp	Other	17	5,082	0.0	73	0	\$11	\$50	\$10	3.7
General Collection G-L	2	Exit Signs: LED - 2 W Lamp	None		6	8,760		None	No	2	Exit Signs: LED - 2 W Lamp	None	6	8,760	0.0	0	0	\$0	\$0	\$0	0.0
General Collection G-L	49	Linear Fluorescent - T8: 4' T8 (32W) - 2L	Other	S	62	5,082	2, 3	Relamp	Yes	49	LED - Linear Tubes: (2) 4' Lamps	Occupancy Sensor	29	3,507	1.0	10,456	-2	\$1,528	\$2,869	\$630	1.5
General Collection L, N - Q	6	Compact Fluorescent: (1) 24W 4-PIN Lamp	Other	S	24	5,082	2, 3	Relamp	Yes	6	LED Lamps: Plug-In Lamp	Occupancy Sensor	17	3,507	0.0	378	0	\$55	\$420	\$65	6.4
General Collection L, N - Q	5	Compact Fluorescent: (2) 13W 2-PIN Lamps	Wall Switch	S	26	2,625	2	Relamp	No	5	LED Lamps: Plug-In Lamp	Wall Switch	18	2,625	0.0	102	0	\$15	\$125	\$10	7.7
General Collection L, N - Q	7	Exit Signs: LED - 2 W Lamp	None		6	8,760		None	No	7	Exit Signs: LED - 2 W Lamp	None	6	8,760	0.0	0	0	\$0	\$0	\$0	0.0
General Collection L, N - Q	7	Linear Fluorescent - T8: 4' T8 (32W) - 1L	Other	S	32	5,082	2, 3	Relamp	Yes	7	LED - Linear Tubes: (1) 4' Lamp	Occupancy Sensor	15	3,507	0.1	782	0	\$114	\$398	\$70	2.9
General Collection L, N - Q	242	Linear Fluorescent - T8: 4' T8 (32W) - 2L	Other	S	62	5,082	2, 3	Relamp	Yes	242	LED - Linear Tubes: (2) 4' Lamps	Occupancy Sensor	29	3,507	5.1	51,641	-12	\$7,547	\$13,427	\$3,015	1.4
General Collection M, Z	2	Compact Fluorescent: (2) 13W 2-PIN Lamps	Wall Switch	S	26	2,625	2	Relamp	No	2	LED Lamps: Plug-In Lamp	Wall Switch	18	2,625	0.0	41	0	\$6	\$50	\$4	7.7
General Collection M, Z	1	Exit Signs: LED - 2 W Lamp	None		6	8,760		None	No	1	Exit Signs: LED - 2 W Lamp	None	6	8,760	0.0	0	0	\$0	\$0	\$0	0.0
General Collection M, Z	58	Linear Fluorescent - T8: 4' T8 (32W) - 2L	Other	S	62	5,082	2, 3	Relamp	Yes	58	LED - Linear Tubes: (2) 4' Lamps	Occupancy Sensor	29	3,507	1.2	12,377	-3	\$1,809	\$3,198	\$720	1.4
General collection Q - V	6	Compact Fluorescent: (2) 13W 2-PIN Lamps	Wall Switch	S	26	2,625	2	Relamp	No	6	LED Lamps: Plug-In Lamp	Wall Switch	18	2,625	0.0	123	0	\$18	\$150	\$12	7.7
General collection Q - V	4	Exit Signs: LED - 2 W Lamp	None		6	8,760		None	No	4	Exit Signs: LED - 2 W Lamp	None	6	8,760	0.0	0	0	\$0	\$0	\$0	0.0
General collection Q - V	127	Linear Fluorescent - T8: 4' T8 (32W) - 2L	Other	S	62	5,082	2, 3	Relamp	Yes	127	LED - Linear Tubes: (2) 4' Lamps	Occupancy Sensor	29	3,507	2.7	27,101	-6	\$3,961	\$7,067	\$1,585	1.4
Green Room 17C	2	Linear Fluorescent - T8: 4' T8 (32W) - 2L	Wall Switch	S	62	5,250	2, 3	Relamp	Yes	2	LED - Linear Tubes: (2) 4' Lamps	Occupancy Sensor	29	3,623	0.0	441	0	\$64	\$189	\$40	2.3
Hallway	1	Exit Signs: LED - 2 W Lamp	None		6	8,760		None	No	1	Exit Signs: LED - 2 W Lamp	None	6	8,760	0.0	0	0	\$0	\$0	\$0	0.0
Hallway	8	Linear Fluorescent - T8: 4' T8 (32W) - 2L	Wall Switch	S	62	5,250	2, 4	Relamp	Yes	8	LED - Linear Tubes: (2) 4' Lamps	High/Low Control	29	3,623	0.2	1,764	0	\$258	\$742	\$360	1.5
Hallway - Basement	12	Compact Fluorescent: (1) 26W 4-PIN Lamp	Wall Switch	S	26	5,250	2, 4	Relamp	Yes	12	LED Lamps: Plug-In Lamp	High/Low Control	18	3,623	0.1	847	0	\$124	\$750	\$480	2.2
Hallway - Basement	1	Exit Signs: LED - 2 W Lamp	None		6	8,760		None	No	1	Exit Signs: LED - 2 W Lamp	None	6	8,760	0.0	0	0	\$0	\$0	\$0	0.0

	Existing Conditions						Proposed Conditions								Energy Impact & Financial Analysis							
Location	Fixture Quantity	Fixture Description	Control System	Light Level	Watts per Fixture	Annual Operating Hours	ECM #	Fixture Recommendation	Add Controls?	Fixture Quantity	Fixture Description	Control System	Watts per Fixture	Annual Operating Hours	Total Peak kW Savings	Total Annual kWh Savings	Total Annual MMBtu Savings	Total Annual Energy Cost Savings	Estimated M&L Cost (\$)	Total Incentives	Simple Payback w/ Incentives in Years	
Hallway - Basement	3	Linear Fluorescent - T8: 4' T8 (32W) - 2L	Wall Switch	S	62	5,250	2, 4	Relamp	Yes	3	LED - Linear Tubes: (2) 4' Lamps	High/Low Control	29	3,623	0.1	661	0	\$97	\$335	\$135	2.1	
Hallway - Elevator Room	1	Exit Signs: LED - 2 W Lamp	None		6	8,760		None	No	1	Exit Signs: LED - 2 W Lamp	None	6	8,760	0.0	0	0	\$0	\$0	\$0	0.0	
Hallway - Elevator Room	4	Linear Fluorescent - T8: 4' T8 (32W) - 2L	Wall Switch	S	62	5,250	2, 4	Relamp	Yes	4	LED - Linear Tubes: (2) 4' Lamps	High/Low Control	29	3,623	0.1	882	0	\$129	\$371	\$180	1.5	
Inter-Library	6	Compact Fluorescent: (1) 26W 4-PIN Lamp	Other	S	26	5,082	2, 3	Relamp	Yes	6	LED Lamps: Plug-In Lamp	Occupancy Sensor	18	3,507	0.0	410	0	\$60	\$420	\$65	5.9	
Inter-Library	2	Exit Signs: LED - 2 W Lamp	None		6	8,760		None	No	2	Exit Signs: LED - 2 W Lamp	None	6	8,760	0.0	0	0	\$0	\$0	\$0	0.0	
Inter-Library	21	Linear Fluorescent - T8: 4' T8 (32W) - 3L	Other	S	93	5,082	2, 3	Relamp	Yes	21	LED - Linear Tubes: (3) 4' Lamps	Occupancy Sensor	44	3,507	0.7	6,722	-2	\$982	\$1,690	\$385	1.3	
Janitorial	1	Linear Fluorescent - T8: 4' T8 (32W) - 1L	Wall Switch	S	32	2,100	2	Relamp	No	1	LED - Linear Tubes: (1) 4' Lamp	Wall Switch	15	2,100	0.0	37	0	\$5	\$18	\$5	2.5	
Janitorial	1	Linear Fluorescent - T8: 4' T8 (32W) - 1L	Wall Switch	S	32	2,100	2	Relamp	No	1	LED - Linear Tubes: (1) 4' Lamp	Wall Switch	15	2,100	0.0	37	0	\$5	\$18	\$5	2.5	
Janitorial	1	Linear Fluorescent - T8: 4' T8 (32W) - 1L	Wall Switch	S	32	2,100	2	Relamp	No	1	LED - Linear Tubes: (1) 4' Lamp	Wall Switch	15	2,100	0.0	37	0	\$5	\$18	\$5	2.5	
Main Access Service Area	12	Compact Fluorescent: (1) 26W 4-PIN Lamp	Other	S	26	5,082	2, 3	Relamp	Yes	12	LED Lamps: Plug-In Lamp	Occupancy Sensor	18	3,507	0.1	820	0	\$120	\$570	\$95	4.0	
Main Access Service Area	2	Compact Fluorescent: (2) 26W 4-PIN Lamps	Other	S	52	5,082	2, 3	Relamp	Yes	2	LED Lamps: Plug-In Lamp	Occupancy Sensor	36	3,507	0.0	273	0	\$40	\$216	\$40	4.4	
Main Access Service Area	1	Exit Signs: LED - 2 W Lamp	None		6	8,760		None	No	1	Exit Signs: LED - 2 W Lamp	None	6	8,760	0.0	0	0	\$0	\$0	\$0	0.0	
Main Access Service Area	13	Halogen Incandescent: A21 Screw In Lamp	Other	S	70	5,082	2, 3	Relamp	Yes	13	LED Lamps: A19 Lamps	Occupancy Sensor	11	3,507	0.4	4,146	-1	\$606	\$494	\$48	0.7	
Main Access Service Area	8	Linear Fluorescent - T8: 4' T8 (32W) - 2L	Other	S	62	5,082	2, 3	Relamp	Yes	8	LED - Linear Tubes: (2) 4' Lamps	Occupancy Sensor	29	3,507	0.2	1,707	0	\$249	\$562	\$115	1.8	
Main Access Service Area	13	Linear Fluorescent - T8: 4' T8 (32W) - 2L	Other	S	62	5,082	2, 3	Relamp	Yes	13	LED - Linear Tubes: (2) 4' Lamps	Occupancy Sensor	29	3,507	0.3	2,774	-1	\$405	\$745	\$165	1.4	
Main Area - Basement	36	Compact Fluorescent: (1) 26W 4-PIN Lamp	Other	S	26	5,082	2, 3	Relamp	Yes	36	LED Lamps: Plug-In Lamp	Occupancy Sensor	18	3,507	0.2	2,459	-1	\$359	\$1,710	\$285	4.0	
Main Area - Basement	2	Compact Fluorescent: (4) 13W 4-PIN Lamps	Other	S	78	5,082	2, 3	Relamp	Yes	2	LED Lamps: Plug-In Lamp	Occupancy Sensor	36	3,507	0.1	538	0	\$79	\$316	\$60	3.3	
Main Area - Basement	3	Exit Signs: LED - 2 W Lamp	None		6	8,760		None	No	3	Exit Signs: LED - 2 W Lamp	None	6	8,760	0.0	0	0	\$0	\$0	\$0	0.0	
Main Area - Basement	2	Linear Fluorescent - T8: 4' T8 (32W) - 1L	Other	S	32	5,082	2	Relamp	No	2	LED - Linear Tubes: (1) 4' Lamp	Other	15	5,082	0.0	178	0	\$26	\$37	\$10	1.0	
Main Entrance	3	Compact Fluorescent: (1) 26W 4-PIN Lamp	Wall Switch	S	26	5,250	2	Relamp	No	3	LED Lamps: Plug-In Lamp	Wall Switch	18	5,250	0.0	123	0	\$18	\$75	\$15	3.3	
Main Entrance	2	Compact Fluorescent: (2) 26W 4-PIN Lamps	Wall Switch	S	52	5,250	2, 3	Relamp	Yes	2	LED Lamps: Plug-In Lamp	Occupancy Sensor	36	3,623	0.0	282	0	\$41	\$216	\$40	4.3	
Main Entrance	1	Exit Signs: LED - 2 W Lamp	None		6	8,760		None	No	1	Exit Signs: LED - 2 W Lamp	None	6	8,760	0.0	0	0	\$0	\$0	\$0	0.0	
Main Entrance	6	Linear Fluorescent - T8: 4' T8 (32W) - 1L	Other	S	32	5,082	2, 3	Relamp	Yes	6	LED - Linear Tubes: (1) 4' Lamp	Occupancy Sensor	15	3,507	0.1	671	0	\$98	\$380	\$65	3.2	
Microforms Area	6	Compact Fluorescent: (2) 13W 2-PIN Lamps	Wall Switch	S	26	2,625	2	Relamp	No	6	LED Lamps: Plug-In Lamp	Wall Switch	18	2,625	0.0	123	0	\$18	\$150	\$12	7.7	
Microforms Area	78	Linear Fluorescent - T8: 4' T8 (32W) - 2L	Other	S	62	5,082	2, 3	Relamp	Yes	78	LED - Linear Tubes: (2) 4' Lamps	Occupancy Sensor	29	3,507	1.6	16,645	-4	\$2,433	\$4,468	\$990	1.4	

Existing Conditions							Proposed Conditions							Energy Impact & Financial Analysis							
Location	Fixture Quantity	Fixture Description	Control System	Light Level	Watts per Fixture	Annual Operating Hours	ECM #	Fixture Recommendation	Add Controls?	Fixture Quantity	Fixture Description	Control System	Watts per Fixture	Annual Operating Hours	Total Peak kW Savings	Total Annual kWh Savings	Total Annual MMBtu Savings	Total Annual Energy Cost Savings	Estimated M&L Cost (\$)	Total Incentives	Simple Payback w/ Incentives in Years
Music - Collection 4th Floor	6	Compact Fluorescent: (2) 13W 2-PIN Lamps	Wall Switch	S	26	2,625	2	Relamp	No	6	LED Lamps: Plug-In Lamp	Wall Switch	18	2,625	0.0	123	0	\$18	\$150	\$12	7.7
Music - Collection 4th Floor	1	Exit Signs: LED - 2 W Lamp	None		6	8,760		None	No	1	Exit Signs: LED - 2 W Lamp	None	6	8,760	0.0	0	0	\$0	\$0	\$0	0.0
Music - Collection 4th Floor	38	Linear Fluorescent - T8: 4' T8 (32W) - 2L	Other	S	62	5,082	2, 3	Relamp	Yes	38	LED - Linear Tubes: (2) 4' Lamps	Occupancy Sensor	29	3,507	0.8	8,109	-2	\$1,185	\$2,198	\$485	1.4
Newspapers Area	1	Exit Signs: LED - 2 W Lamp	None		6	8,760		None	No	1	Exit Signs: LED - 2 W Lamp	None	6	8,760	0.0	0	0	\$0	\$0	\$0	0.0
Newspapers Area	12	Linear Fluorescent - T8: 4' T8 (32W) - 2L	Other	S	62	5,082	2, 3	Relamp	Yes	12	LED - Linear Tubes: (2) 4' Lamps	Occupancy Sensor	29	3,507	0.3	2,561	-1	\$374	\$708	\$155	1.5
Newspapers Area	12	Linear Fluorescent - T8: 4' T8 (32W) - 3L	Other	S	93	5,082	2, 3	Relamp	Yes	12	LED - Linear Tubes: (3) 4' Lamps	Occupancy Sensor	44	3,507	0.4	3,841	-1	\$561	\$927	\$215	1.3
Office - Room 210	4	Linear Fluorescent - T8: 4' T8 (32W) - 2L	Occupancy Sensor	S	62	3,985	2	Relamp	No	4	LED - Linear Tubes: (2) 4' Lamps	Occupancy Sensor	29	3,985	0.1	526	0	\$77	\$146	\$40	1.4
Office - Room 211	3	Linear Fluorescent - T8: 4' T8 (32W) - 2L	Occupancy Sensor	S	62	3,985	2	Relamp	No	3	LED - Linear Tubes: (2) 4' Lamps	Occupancy Sensor	29	3,985	0.0	394	0	\$58	\$110	\$30	1.4
Office - Room 212	3	Linear Fluorescent - T8: 4' T8 (32W) - 2L	Occupancy Sensor	S	62	3,985	2	Relamp	No	3	LED - Linear Tubes: (2) 4' Lamps	Occupancy Sensor	29	3,985	0.0	394	0	\$58	\$110	\$30	1.4
Office - Room 213	4	Linear Fluorescent - T8: 4' T8 (32W) - 2L	Occupancy Sensor	S	62	3,985	2	Relamp	No	4	LED - Linear Tubes: (2) 4' Lamps	Occupancy Sensor	29	3,985	0.1	526	0	\$77	\$146	\$40	1.4
Office - Room 214	3	Linear Fluorescent - T8: 4' T8 (32W) - 2L	Occupancy Sensor	S	62	3,985	2	Relamp	No	3	LED - Linear Tubes: (2) 4' Lamps	Occupancy Sensor	29	3,985	0.0	394	0	\$58	\$110	\$30	1.4
Office - Room 215	3	Linear Fluorescent - T8: 4' T8 (32W) - 2L	Occupancy Sensor	S	62	3,985	2	Relamp	No	3	LED - Linear Tubes: (2) 4' Lamps	Occupancy Sensor	29	3,985	0.0	394	0	\$58	\$110	\$30	1.4
Office - Room 216	3	Linear Fluorescent - T8: 4' T8 (32W) - 2L	Occupancy Sensor	S	62	3,985	2	Relamp	No	3	LED - Linear Tubes: (2) 4' Lamps	Occupancy Sensor	29	3,985	0.0	394	0	\$58	\$110	\$30	1.4
Office - Room 217	4	Linear Fluorescent - T8: 4' T8 (32W) - 2L	Occupancy Sensor	S	62	3,985	2	Relamp	No	4	LED - Linear Tubes: (2) 4' Lamps	Occupancy Sensor	29	3,985	0.1	526	0	\$77	\$146	\$40	1.4
Office - Room 306A	3	Linear Fluorescent - T8: 4' T8 (32W) - 2L	Occupancy Sensor	S	62	3,985	2	Relamp	No	3	LED - Linear Tubes: (2) 4' Lamps	Occupancy Sensor	29	3,985	0.0	394	0	\$58	\$110	\$30	1.4
Office - Room 306C	3	Linear Fluorescent - T8: 4' T8 (32W) - 2L	Occupancy Sensor	S	62	3,985	2	Relamp	No	3	LED - Linear Tubes: (2) 4' Lamps	Occupancy Sensor	29	3,985	0.0	394	0	\$58	\$110	\$30	1.4
Office - Room 306D	3	Linear Fluorescent - T8: 4' T8 (32W) - 2L	Occupancy Sensor	S	62	3,985	2	Relamp	No	3	LED - Linear Tubes: (2) 4' Lamps	Occupancy Sensor	29	3,985	0.0	394	0	\$58	\$110	\$30	1.4
Office - Room 306E	3	Linear Fluorescent - T8: 4' T8 (32W) - 1L	Wall Switch	S	32	5,250	2	Relamp	No	3	LED - Linear Tubes: (1) 4' Lamp	Wall Switch	15	5,250	0.0	276	0	\$40	\$55	\$15	1.0
Office - Room 306E	4	Linear Fluorescent - T8: 4' T8 (32W) - 2L	Occupancy Sensor	S	62	3,985	2	Relamp	No	4	LED - Linear Tubes: (2) 4' Lamps	Occupancy Sensor	29	3,985	0.1	526	0	\$77	\$146	\$40	1.4
Office 104	3	Linear Fluorescent - T8: 4' T8 (32W) - 2L	Occupancy Sensor	S	62	3,985	2	Relamp	No	3	LED - Linear Tubes: (2) 4' Lamps	Occupancy Sensor	29	3,985	0.0	394	0	\$58	\$110	\$30	1.4
Office 105	4	Linear Fluorescent - T8: 4' T8 (32W) - 2L	Occupancy Sensor	S	62	3,985	2	Relamp	No	4	LED - Linear Tubes: (2) 4' Lamps	Occupancy Sensor	29	3,985	0.1	526	0	\$77	\$146	\$40	1.4
Office 106	4	Linear Fluorescent - T8: 4' T8 (32W) - 2L	Occupancy Sensor	S	62	3,985	2	Relamp	No	4	LED - Linear Tubes: (2) 4' Lamps	Occupancy Sensor	29	3,985	0.1	526	0	\$77	\$146	\$40	1.4
Office 121E	2	Linear Fluorescent - T8: 4' T8 (32W) - 2L	Occupancy Sensor	S	62	3,985	2	Relamp	No	2	LED - Linear Tubes: (2) 4' Lamps	Occupancy Sensor	29	3,985	0.0	263	0	\$38	\$73	\$20	1.4
Reading Area 4th Floor	6	Compact Fluorescent: (2) 13W 2-PIN Lamps	Wall Switch	S	26	2,625	2	Relamp	No	6	LED Lamps: Plug-In Lamp	Wall Switch	18	2,625	0.0	123	0	\$18	\$150	\$12	7.7
Reading Area 4th Floor	28	Linear Fluorescent - T8: 4' T8 (32W) - 3L	Other	S	93	5,082	2, 3	Relamp	Yes	28	LED - Linear Tubes: (3) 4' Lamps	Occupancy Sensor	44	3,507	0.9	8,963	-2	\$1,310	\$2,074	\$490	1.2

Existing Conditions							Proposed Conditions							Energy Impact & Financial Analysis							
Location	Fixture Quantity	Fixture Description	Control System	Light Level	Watts per Fixture	Annual Operating Hours	ECM #	Fixture Recommendation	Add Controls?	Fixture Quantity	Fixture Description	Control System	Watts per Fixture	Annual Operating Hours	Total Peak kW Savings	Total Annual kWh Savings	Total Annual MMBtu Savings	Total Annual Energy Cost Savings	Estimated M&L Cost (\$)	Total Incentives	Simple Payback w/ Incentives in Years
Reference Area	7	Compact Fluorescent: (2) 13W 2-PIN Lamps	Wall Switch	S	26	2,625	2	Relamp	No	7	LED Lamps: Plug-In Lamp	Wall Switch	18	2,625	0.0	143	0	\$21	\$175	\$14	7.7
Reference Area	7	Compact Fluorescent: (4) 13W 2-PIN Lamps	Other	S	52	5,082	2, 3	Relamp	Yes	7	LED Lamps: Plug-In Lamp	Occupancy Sensor	36	3,507	0.1	956	0	\$140	\$620	\$63	4.0
Reference Area	29	Compact Fluorescent: (1) 26W 4-PIN Lamp	Other	S	26	5,082	2, 3	Relamp	Yes	29	LED Lamps: Plug-In Lamp	Occupancy Sensor	18	3,507	0.2	1,981	0	\$290	\$1,265	\$215	3.6
Reference Area	9	Exit Signs: LED - 2 W Lamp	None		6	8,760		None	No	9	Exit Signs: LED - 2 W Lamp	None	6	8,760	0.0	0	0	\$0	\$0	\$0	0.0
Reference Area	32	Linear Fluorescent - T8: 4' T8 (32W) - 1L	Other	S	32	5,082	2, 3	Relamp	Yes	32	LED - Linear Tubes: (1) 4' Lamp	Occupancy Sensor	15	3,507	0.4	3,577	-1	\$523	\$1,394	\$265	2.2
Reference Area	143	Linear Fluorescent - T8: 4' T8 (32W) - 2L	Other	S	62	5,082	2, 3	Relamp	Yes	143	LED - Linear Tubes: (2) 4' Lamps	Occupancy Sensor	29	3,507	3.0	30,515	-7	\$4,460	\$7,922	\$1,780	1.4
Reference Area	60	Linear Fluorescent - T8: 4' T8 (32W) - 2L	Other	S	62	5,082	2, 3	Relamp	Yes	60	LED - Linear Tubes: (2) 4' Lamps	Occupancy Sensor	29	3,507	1.3	12,804	-3	\$1,871	\$3,271	\$740	1.4
Reference Area	60	Linear Fluorescent - T8: 4' T8 (32W) - 3L	Other	S	93	5,082	2, 3	Relamp	Yes	60	LED - Linear Tubes: (3) 4' Lamps	Occupancy Sensor	44	3,507	1.9	19,205	-4	\$2,807	\$4,366	\$1,040	1.2
Restroom - Female	4	Compact Fluorescent: (1) 26W 4-PIN Lamp	Wall Switch	S	26	5,250	2, 3	Relamp	Yes	4	LED Lamps: Plug-In Lamp	Occupancy Sensor	18	3,623	0.0	282	0	\$41	\$370	\$55	7.6
Restroom - Female	3	Linear Fluorescent - T8: 4' T8 (32W) - 1L	Wall Switch	S	32	5,250	2	Relamp	No	3	LED - Linear Tubes: (1) 4' Lamp	Wall Switch	15	5,250	0.0	276	0	\$40	\$55	\$15	1.0
Restroom - Female	4	Compact Fluorescent: (1) 26W 4-PIN Lamp	Wall Switch	S	26	5,250	2, 3	Relamp	Yes	4	LED Lamps: Plug-In Lamp	Occupancy Sensor	18	3,623	0.0	282	0	\$41	\$370	\$55	7.6
Restroom - Female	8	Linear Fluorescent - T8: 4' T8 (32W) - 1L	Wall Switch	S	32	5,250	2, 3	Relamp	Yes	8	LED - Linear Tubes: (1) 4' Lamp	Occupancy Sensor	15	3,623	0.1	924	0	\$135	\$416	\$75	2.5
Restroom - Female	4	Compact Fluorescent: (1) 26W 4-PIN Lamp	Wall Switch	S	26	5,250	2, 3	Relamp	Yes	4	LED Lamps: Plug-In Lamp	Occupancy Sensor	18	3,623	0.0	282	0	\$41	\$370	\$55	7.6
Restroom - Female	3	Linear Fluorescent - T8: 4' T8 (32W) - 1L	Wall Switch	S	32	5,250	2	Relamp	No	3	LED - Linear Tubes: (1) 4' Lamp	Wall Switch	15	5,250	0.0	276	0	\$40	\$55	\$15	1.0
Restroom - Female	4	Compact Fluorescent: (1) 26W 4-PIN Lamp	Wall Switch	S	26	5,250	2, 3	Relamp	Yes	4	LED Lamps: Plug-In Lamp	Occupancy Sensor	18	3,623	0.0	282	0	\$41	\$370	\$55	7.6
Restroom - Female	3	Linear Fluorescent - T8: 4' T8 (32W) - 1L	Wall Switch	S	32	5,250	2	Relamp	No	3	LED - Linear Tubes: (1) 4' Lamp	Wall Switch	15	5,250	0.0	276	0	\$40	\$55	\$15	1.0
Restroom - Male	4	Compact Fluorescent: (1) 26W 4-PIN Lamp	Wall Switch	S	26	5,250	2, 3	Relamp	Yes	4	LED Lamps: Plug-In Lamp	Occupancy Sensor	18	3,623	0.0	282	0	\$41	\$370	\$55	7.6
Restroom - Male	8	Linear Fluorescent - T8: 4' T8 (32W) - 1L	Wall Switch	S	32	5,250	2, 3	Relamp	Yes	8	LED - Linear Tubes: (1) 4' Lamp	Occupancy Sensor	15	3,623	0.1	924	0	\$135	\$416	\$75	2.5
Restroom - Male	4	Compact Fluorescent: (1) 26W 4-PIN Lamp	Wall Switch	S	26	5,250	2, 3	Relamp	Yes	4	LED Lamps: Plug-In Lamp	Occupancy Sensor	18	3,623	0.0	282	0	\$41	\$370	\$55	7.6
Restroom - Male	3	Linear Fluorescent - T8: 4' T8 (32W) - 1L	Wall Switch	S	32	5,250	2	Relamp	No	3	LED - Linear Tubes: (1) 4' Lamp	Wall Switch	15	5,250	0.0	276	0	\$40	\$55	\$15	1.0
Restroom - Male	4	Compact Fluorescent: (1) 26W 4-PIN Lamp	Wall Switch	S	26	5,250	2, 3	Relamp	Yes	4	LED Lamps: Plug-In Lamp	Occupancy Sensor	18	3,623	0.0	282	0	\$41	\$370	\$55	7.6
Restroom - Male	3	Linear Fluorescent - T8: 4' T8 (32W) - 1L	Wall Switch	S	32	5,250	2	Relamp	No	3	LED - Linear Tubes: (1) 4' Lamp	Wall Switch	15	5,250	0.0	276	0	\$40	\$55	\$15	1.0
Restroom - Male	4	Compact Fluorescent: (1) 26W 4-PIN Lamp	Wall Switch	S	26	5,250	2, 3	Relamp	Yes	4	LED Lamps: Plug-In Lamp	Occupancy Sensor	18	3,623	0.0	282	0	\$41	\$370	\$55	7.6
Restroom - Male	3	Linear Fluorescent - T8: 4' T8 (32W) - 1L	Wall Switch	S	32	5,250	2	Relamp	No	3	LED - Linear Tubes: (1) 4' Lamp	Wall Switch	15	5,250	0.0	276	0	\$40	\$55	\$15	1.0
Restroom - Male Basement	4	Compact Fluorescent: (1) 26W 4-PIN Lamp	Wall Switch	S	26	5,250	2, 3	Relamp	Yes	4	LED Lamps: Plug-In Lamp	Occupancy Sensor	18	3,623	0.0	282	0	\$41	\$370	\$55	7.6

Existing Conditions							Proposed Conditions							Energy Impact & Financial Analysis							
Location	Fixture Quantity	Fixture Description	Control System	Light Level	Watts per Fixture	Annual Operating Hours	ECM #	Fixture Recommendation	Add Controls?	Fixture Quantity	Fixture Description	Control System	Watts per Fixture	Annual Operating Hours	Total Peak kW Savings	Total Annual kWh Savings	Total Annual MMBtu Savings	Total Annual Energy Cost Savings	Estimated M&L Cost (\$)	Total Incentives	Simple Payback w/ Incentives in Years
Restroom - Male Basement	6	Linear Fluorescent - T8: 4' T8 (32W) - 1L	Wall Switch	S	32	5,250	2, 3	Relamp	Yes	6	LED - Linear Tubes: (1) 4' Lamp	Occupancy Sensor	15	3,623	0.1	693	0	\$101	\$380	\$65	3.1
Restroom - Women Basement	4	Compact Fluorescent: (1) 26W 4-PIN Lamp	Wall Switch	S	26	5,250	2, 3	Relamp	Yes	4	LED Lamps: Plug-In Lamp	Occupancy Sensor	18	3,623	0.0	282	0	\$41	\$370	\$55	7.6
Restroom - Women Basement	6	Linear Fluorescent - T8: 4' T8 (32W) - 1L	Wall Switch	S	32	5,250	2, 3	Relamp	Yes	6	LED - Linear Tubes: (1) 4' Lamp	Occupancy Sensor	15	3,623	0.1	693	0	\$101	\$380	\$65	3.1
Room 108 Telecoms	1	Linear Fluorescent - T8: 4' T8 (32W) - 2L	Wall Switch	S	62	5,250	2	Relamp	No	1	LED - Linear Tubes: (2) 4' Lamps	Wall Switch	29	5,250	0.0	173	0	\$25	\$37	\$10	1.0
Room 109 Group Study	4	Linear Fluorescent - T8: 4' T8 (32W) - 2L	Occupancy Sensor	S	62	3,985	2	Relamp	No	4	LED - Linear Tubes: (2) 4' Lamps	Occupancy Sensor	29	3,985	0.1	526	0	\$77	\$146	\$40	1.4
Room 110 Group Study	4	Linear Fluorescent - T8: 4' T8 (32W) - 2L	Occupancy Sensor	S	62	3,985	2	Relamp	No	4	LED - Linear Tubes: (2) 4' Lamps	Occupancy Sensor	29	3,985	0.1	526	0	\$77	\$146	\$40	1.4
Room 111 Group Study	4	Linear Fluorescent - T8: 4' T8 (32W) - 2L	Occupancy Sensor	S	62	3,985	2	Relamp	No	4	LED - Linear Tubes: (2) 4' Lamps	Occupancy Sensor	29	3,985	0.1	526	0	\$77	\$146	\$40	1.4
Room 121D Storage	1	Compact Fluorescent: (1) 26W 4-PIN Lamp	Wall Switch	S	26	2,100	2	Relamp	No	1	LED Lamps: Plug-In Lamp	Wall Switch	18	2,100	0.0	16	0	\$2	\$25	\$5	8.4
Room 121D Storage	1	Linear Fluorescent - T8: 4' T8 (32W) - 1L	Wall Switch	S	32	2,100	2	Relamp	No	1	LED - Linear Tubes: (1) 4' Lamp	Wall Switch	15	2,100	0.0	37	0	\$5	\$18	\$5	2.5
Room 121D Storage	4	Linear Fluorescent - T8: 4' T8 (32W) - 2L	Wall Switch	S	62	2,100	2, 3	Relamp	Yes	4	LED - Linear Tubes: (2) 4' Lamps	Occupancy Sensor	29	1,449	0.1	353	0	\$52	\$416	\$40	7.3
Room 122 Receiving	1	Exit Signs: LED - 2 W Lamp	None		6	8,760		None	No	1	Exit Signs: LED - 2 W Lamp	None	6	8,760	0.0	0	0	\$0	\$0	\$0	0.0
Room 122 Receiving	7	Linear Fluorescent - T8: 4' T8 (32W) - 2L	Wall Switch	S	62	5,250	2, 3	Relamp	Yes	7	LED - Linear Tubes: (2) 4' Lamps	Occupancy Sensor	29	3,623	0.1	1,543	0	\$226	\$526	\$105	1.9
Room 122C Telecom	1	Linear Fluorescent - T8: 4' T8 (32W) - 2L	Wall Switch	S	62	2,625	2	Relamp	No	1	LED - Linear Tubes: (2) 4' Lamps	Wall Switch	29	2,625	0.0	87	0	\$13	\$37	\$10	2.1
Room 14 - Telecom	1	Exit Signs: LED - 2 W Lamp	None		6	8,760		None	No	1	Exit Signs: LED - 2 W Lamp	None	6	8,760	0.0	0	0	\$0	\$0	\$0	0.0
Room 14 - Telecom	7	Linear Fluorescent - T8: 4' T8 (32W) - 2L	Wall Switch	S	62	2,625	2, 3	Relamp	Yes	7	LED - Linear Tubes: (2) 4' Lamps	Occupancy Sensor	29	1,811	0.1	772	0	\$113	\$526	\$105	3.7
Room 15 - Janitorial	1	Linear Fluorescent - T8: 4' T8 (32W) - 1L	Wall Switch	S	32	2,100	2	Relamp	No	1	LED - Linear Tubes: (1) 4' Lamp	Wall Switch	15	2,100	0.0	37	0	\$5	\$18	\$5	2.5
Room 218	12	Linear Fluorescent - T8: 4' T8 (32W) - 2L	Wall Switch	S	62	5,250	2, 3	Relamp	Yes	12	LED - Linear Tubes: (2) 4' Lamps	Occupancy Sensor	29	3,623	0.3	2,645	-1	\$387	\$708	\$155	1.4
Room 219	5	Compact Fluorescent: (1) 26W 4-PIN Lamp	Wall Switch	S	26	5,250	2, 3	Relamp	Yes	5	LED Lamps: Plug-In Lamp	Occupancy Sensor	18	3,623	0.0	353	0	\$52	\$395	\$60	6.5
Room 219	3	Linear Fluorescent - T8: 4' T8 (32W) - 1L	Wall Switch	S	32	5,250	2	Relamp	No	3	LED - Linear Tubes: (1) 4' Lamp	Wall Switch	15	5,250	0.0	276	0	\$40	\$55	\$15	1.0
Room 219	4	Linear Fluorescent - T8: 4' T8 (32W) - 2L	Wall Switch	S	62	5,250	2, 3	Relamp	Yes	4	LED - Linear Tubes: (2) 4' Lamps	Occupancy Sensor	29	3,623	0.1	882	0	\$129	\$416	\$75	2.6
Room 219B Telecommunications	1	Linear Fluorescent - T8: 4' T8 (32W) - 2L	Wall Switch	S	62	2,625	2	Relamp	No	1	LED - Linear Tubes: (2) 4' Lamps	Wall Switch	29	2,625	0.0	87	0	\$13	\$37	\$10	2.1
Room 21A Telecommunication	1	Linear Fluorescent - T8: 4' T8 (32W) - 2L	Wall Switch	S	62	2,625	2	Relamp	No	1	LED - Linear Tubes: (2) 4' Lamps	Wall Switch	29	2,625	0.0	87	0	\$13	\$37	\$10	2.1
Room 224 Study Group	4	Linear Fluorescent - T8: 4' T8 (32W) - 2L	Occupancy Sensor	S	62	3,985	2	Relamp	No	4	LED - Linear Tubes: (2) 4' Lamps	Occupancy Sensor	29	3,985	0.1	526	0	\$77	\$146	\$40	1.4
Room 225 Study Group	4	Linear Fluorescent - T8: 4' T8 (32W) - 2L	Occupancy Sensor	S	62	3,985	2	Relamp	No	4	LED - Linear Tubes: (2) 4' Lamps	Occupancy Sensor	29	3,985	0.1	526	0	\$77	\$146	\$40	1.4
Room 226 Study Group	2	Linear Fluorescent - T8: 4' T8 (32W) - 2L	Occupancy Sensor	S	62	3,985	2	Relamp	No	2	LED - Linear Tubes: (2) 4' Lamps	Occupancy Sensor	29	3,985	0.0	263	0	\$38	\$73	\$20	1.4

Existing Conditions							Proposed Conditions							Energy Impact & Financial Analysis							
Location	Fixture Quantity	Fixture Description	Control System	Light Level	Watts per Fixture	Annual Operating Hours	ECM #	Fixture Recommendation	Add Controls?	Fixture Quantity	Fixture Description	Control System	Watts per Fixture	Annual Operating Hours	Total Peak kW Savings	Total Annual kWh Savings	Total Annual MMBtu Savings	Total Annual Energy Cost Savings	Estimated M&L Cost (\$)	Total Incentives	Simple Payback w/ Incentives in Years
Room 227 Electric Room	1	Linear Fluorescent - T8: 4' T8 (32W) - 2L	Wall Switch	S	62	5,250	2	Relamp	No	1	LED - Linear Tubes: (2) 4' Lamps	Wall Switch	29	5,250	0.0	173	0	\$25	\$37	\$10	1.0
Room 228 Study Group	4	Linear Fluorescent - T8: 4' T8 (32W) - 2L	Occupancy Sensor	S	62	3,985	2	Relamp	No	4	LED - Linear Tubes: (2) 4' Lamps	Occupancy Sensor	29	3,985	0.1	526	0	\$77	\$146	\$40	1.4
Room 301 - Group Study	3	Linear Fluorescent - T8: 4' T8 (32W) - 1L	Occupancy Sensor	S	32	3,985	2	Relamp	No	3	LED - Linear Tubes: (1) 4' Lamp	Occupancy Sensor	15	3,985	0.0	209	0	\$31	\$55	\$15	1.3
Room 301 - Group Study	4	Linear Fluorescent - T8: 4' T8 (32W) - 2L	Occupancy Sensor	S	62	3,985	2	Relamp	No	4	LED - Linear Tubes: (2) 4' Lamps	Occupancy Sensor	29	3,985	0.1	526	0	\$77	\$146	\$40	1.4
Room 303 Dean Office	2	Compact Fluorescent: (1) 26W 4-PIN Lamp	Wall Switch	S	26	5,250	2	Relamp	No	2	LED Lamps: Plug-In Lamp	Wall Switch	18	5,250	0.0	82	0	\$12	\$50	\$10	3.3
Room 303 Dean Office	1	Exit Signs: LED - 2 W Lamp	None		6	8,760		None	No	1	Exit Signs: LED - 2 W Lamp	None	6	8,760	0.0	0	0	\$0	\$0	\$0	0.0
Room 303 Dean Office	14	Linear Fluorescent - T8: 4' T8 (32W) - 2L	Wall Switch	S	62	5,250	2, 3	Relamp	Yes	14	LED - Linear Tubes: (2) 4' Lamps	Occupancy Sensor	29	3,623	0.3	3,086	-1	\$451	\$781	\$175	1.3
Room 303B	4	Linear Fluorescent - T8: 4' T8 (32W) - 2L	Occupancy Sensor	S	62	3,985	2	Relamp	No	4	LED - Linear Tubes: (2) 4' Lamps	Occupancy Sensor	29	3,985	0.1	526	0	\$77	\$146	\$40	1.4
Room 303C	1	Compact Fluorescent: (4) 13W 2-PIN Lamps	Occupancy Sensor	S	52	3,985	2	Relamp	No	1	LED Lamps: Plug-In Lamp	Occupancy Sensor	36	3,985	0.0	62	0	\$9	\$50	\$4	5.1
Room 303C	12	Compact Fluorescent: (1) 26W 4-PIN Lamp	Occupancy Sensor	S	26	3,985	2	Relamp	No	12	LED Lamps: Plug-In Lamp	Occupancy Sensor	18	3,985	0.0	373	0	\$55	\$300	\$60	4.4
Room 303D Copy Room	2	Linear Fluorescent - T8: 4' T8 (32W) - 2L	Occupancy Sensor	S	62	3,985	2	Relamp	No	2	LED - Linear Tubes: (2) 4' Lamps	Occupancy Sensor	29	3,985	0.0	263	0	\$38	\$73	\$20	1.4
Room 303E Telecom	1	Linear Fluorescent - T8: 4' T8 (32W) - 2L	Wall Switch	S	62	2,625	2	Relamp	No	1	LED - Linear Tubes: (2) 4' Lamps	Wall Switch	29	2,625	0.0	87	0	\$13	\$37	\$10	2.1
Room 306 Technical Sces	2	Compact Fluorescent: (4) 13W 2-PIN Lamps	Wall Switch	S	52	5,250	2, 3	Relamp	Yes	2	LED Lamps: Plug-In Lamp	Occupancy Sensor	36	3,623	0.0	282	0	\$41	\$216	\$28	4.6
Room 306 Technical Sces	3	Exit Signs: LED - 2 W Lamp	None		6	8,760		None	No	3	Exit Signs: LED - 2 W Lamp	None	6	8,760	0.0	0	0	\$0	\$0	\$0	0.0
Room 306 Technical Sces	7	Linear Fluorescent - T8: 4' T8 (32W) - 1L	Wall Switch	S	32	5,250	2, 3	Relamp	Yes	7	LED - Linear Tubes: (1) 4' Lamp	Occupancy Sensor	15	3,623	0.1	808	0	\$118	\$398	\$70	2.8
Room 306 Technical Sces	83	Linear Fluorescent - T8: 4' T8 (32W) - 2L	Wall Switch	S	62	5,250	2, 3	Relamp	Yes	83	LED - Linear Tubes: (2) 4' Lamps	Occupancy Sensor	29	3,623	1.7	18,297	-4	\$2,674	\$4,651	\$1,040	1.4
Room 308- Group Study	8	Linear Fluorescent - T8: 4' T8 (32W) - 1L	Occupancy Sensor	S	32	3,985	2	Relamp	No	8	LED - Linear Tubes: (1) 4' Lamp	Occupancy Sensor	15	3,985	0.1	558	0	\$82	\$146	\$40	1.3
Room 308- Group Study	2	Linear Fluorescent - T8: 4' T8 (32W) - 2L	Occupancy Sensor	S	62	3,985	2	Relamp	No	2	LED - Linear Tubes: (2) 4' Lamps	Occupancy Sensor	29	3,985	0.0	263	0	\$38	\$73	\$20	1.4
Room 309- Group Study	8	Linear Fluorescent - T8: 4' T8 (32W) - 1L	Occupancy Sensor	S	32	3,985	2	Relamp	No	8	LED - Linear Tubes: (1) 4' Lamp	Occupancy Sensor	15	3,985	0.1	558	0	\$82	\$146	\$40	1.3
Room 309- Group Study	2	Linear Fluorescent - T8: 4' T8 (32W) - 2L	Occupancy Sensor	S	62	3,985	2	Relamp	No	2	LED - Linear Tubes: (2) 4' Lamps	Occupancy Sensor	29	3,985	0.0	263	0	\$38	\$73	\$20	1.4
Room 310 - Group Study	8	Linear Fluorescent - T8: 4' T8 (32W) - 1L	Occupancy Sensor	S	32	3,985	2	Relamp	No	8	LED - Linear Tubes: (1) 4' Lamp	Occupancy Sensor	15	3,985	0.1	558	0	\$82	\$146	\$40	1.3
Room 310 - Group Study	2	Linear Fluorescent - T8: 4' T8 (32W) - 2L	Occupancy Sensor	S	62	3,985	2	Relamp	No	2	LED - Linear Tubes: (2) 4' Lamps	Occupancy Sensor	29	3,985	0.0	263	0	\$38	\$73	\$20	1.4
Room 311 - Group Study	8	Linear Fluorescent - T8: 4' T8 (32W) - 1L	Occupancy Sensor	S	32	3,985	2	Relamp	No	8	LED - Linear Tubes: (1) 4' Lamp	Occupancy Sensor	15	3,985	0.1	558	0	\$82	\$146	\$40	1.3
Room 311 - Group Study	2	Linear Fluorescent - T8: 4' T8 (32W) - 2L	Occupancy Sensor	S	62	3,985	2	Relamp	No	2	LED - Linear Tubes: (2) 4' Lamps	Occupancy Sensor	29	3,985	0.0	263	0	\$38	\$73	\$20	1.4
Room 315 - Group Study	4	Linear Fluorescent - T8: 4' T8 (32W) - 2L	Occupancy Sensor	S	62	3,985	2	Relamp	No	4	LED - Linear Tubes: (2) 4' Lamps	Occupancy Sensor	29	3,985	0.1	526	0	\$77	\$146	\$40	1.4

Existing Conditions							Proposed Conditions							Energy Impact & Financial Analysis							
Location	Fixture Quantity	Fixture Description	Control System	Light Level	Watts per Fixture	Annual Operating Hours	ECM #	Fixture Recommendation	Add Controls?	Fixture Quantity	Fixture Description	Control System	Watts per Fixture	Annual Operating Hours	Total Peak kW Savings	Total Annual kWh Savings	Total Annual MMBtu Savings	Total Annual Energy Cost Savings	Estimated M&L Cost (\$)	Total Incentives	Simple Payback w/ Incentives in Years
Room 316 - Group Study	4	Linear Fluorescent - T8: 4' T8 (32W) - 2L	Occupancy Sensor	S	62	3,985	2	Relamp	No	4	LED - Linear Tubes: (2) 4' Lamps	Occupancy Sensor	29	3,985	0.1	526	0	\$77	\$146	\$40	1.4
Room 317 - Group Study	4	Linear Fluorescent - T8: 4' T8 (32W) - 2L	Occupancy Sensor	S	62	3,985	2	Relamp	No	4	LED - Linear Tubes: (2) 4' Lamps	Occupancy Sensor	29	3,985	0.1	526	0	\$77	\$146	\$40	1.4
Room 319 - Group Study	4	Linear Fluorescent - T8: 4' T8 (32W) - 2L	Occupancy Sensor	S	62	3,985	2	Relamp	No	4	LED - Linear Tubes: (2) 4' Lamps	Occupancy Sensor	29	3,985	0.1	526	0	\$77	\$146	\$40	1.4
Room 3rd Floor Telecommunications	1	Linear Fluorescent - T8: 4' T8 (32W) - 2L	Wall Switch	S	62	2,625	2	Relamp	No	1	LED - Linear Tubes: (2) 4' Lamps	Wall Switch	29	2,625	0.0	87	0	\$13	\$37	\$10	2.1
Room 403 - Media Sces Office	1	Exit Signs: LED - 2 W Lamp	None		6	8,760		None	No	1	Exit Signs: LED - 2 W Lamp	None	6	8,760	0.0	0	0	\$0	\$0	\$0	0.0
Room 403 - Media Sces Office	10	Linear Fluorescent - T8: 4' T8 (32W) - 2L	Wall Switch	S	62	5,250	2, 3	Relamp	Yes	10	LED - Linear Tubes: (2) 4' Lamps	Occupancy Sensor	29	3,623	0.2	2,204	-1	\$322	\$635	\$135	1.6
Room 403A Office	4	Linear Fluorescent - T8: 4' T8 (32W) - 2L	Occupancy Sensor	S	62	3,985	2	Relamp	No	4	LED - Linear Tubes: (2) 4' Lamps	Occupancy Sensor	29	3,985	0.1	526	0	\$77	\$146	\$40	1.4
Room 403B Office	4	Linear Fluorescent - T8: 4' T8 (32W) - 2L	Occupancy Sensor	S	62	3,985	2	Relamp	No	4	LED - Linear Tubes: (2) 4' Lamps	Occupancy Sensor	29	3,985	0.1	526	0	\$77	\$146	\$40	1.4
Room 403C Office	7	Linear Fluorescent - T8: 4' T8 (32W) - 2L	Occupancy Sensor	S	62	3,985	2	Relamp	No	7	LED - Linear Tubes: (2) 4' Lamps	Occupancy Sensor	29	3,985	0.1	920	0	\$135	\$256	\$70	1.4
Room 403D Telecoms	1	Linear Fluorescent - T8: 4' T8 (32W) - 2L	Wall Switch	S	62	2,625	2	Relamp	No	1	LED - Linear Tubes: (2) 4' Lamps	Wall Switch	29	2,625	0.0	87	0	\$13	\$37	\$10	2.1
Room 403E Office	4	Linear Fluorescent - T8: 4' T8 (32W) - 2L	Occupancy Sensor	S	62	3,985	2	Relamp	No	4	LED - Linear Tubes: (2) 4' Lamps	Occupancy Sensor	29	3,985	0.1	526	0	\$77	\$146	\$40	1.4
Room 404 - Group Study	4	Linear Fluorescent - T8: 4' T8 (32W) - 2L	Occupancy Sensor	S	62	3,985	2	Relamp	No	4	LED - Linear Tubes: (2) 4' Lamps	Occupancy Sensor	29	3,985	0.1	526	0	\$77	\$146	\$40	1.4
Room 405 - Office	4	Linear Fluorescent - T8: 4' T8 (32W) - 2L	Occupancy Sensor	S	62	3,985	2	Relamp	No	4	LED - Linear Tubes: (2) 4' Lamps	Occupancy Sensor	29	3,985	0.1	526	0	\$77	\$146	\$40	1.4
Room 410 Archives	1	Exit Signs: LED - 2 W Lamp	None		6	8,760		None	No	1	Exit Signs: LED - 2 W Lamp	None	6	8,760	0.0	0	0	\$0	\$0	\$0	0.0
Room 410 Archives	24	Linear Fluorescent - T8: 4' T8 (32W) - 2L	Wall Switch	S	62	5,250	2, 3	Relamp	Yes	24	LED - Linear Tubes: (2) 4' Lamps	Occupancy Sensor	29	3,623	0.5	5,291	-1	\$773	\$1,416	\$310	1.4
Room 410A Storage	1	Linear Fluorescent - T8: 4' T8 (32W) - 2L	Wall Switch	S	62	2,100	2	Relamp	No	1	LED - Linear Tubes: (2) 4' Lamps	Wall Switch	29	2,100	0.0	69	0	\$10	\$37	\$10	2.6
Room 410C Telecom	1	Linear Fluorescent - T8: 4' T8 (32W) - 2L	Wall Switch	S	62	2,100	2	Relamp	No	1	LED - Linear Tubes: (2) 4' Lamps	Wall Switch	29	2,100	0.0	69	0	\$10	\$37	\$10	2.6
Room 411 Group Study	4	Linear Fluorescent - T8: 4' T8 (32W) - 2L	Occupancy Sensor	S	62	3,985	2	Relamp	No	4	LED - Linear Tubes: (2) 4' Lamps	Occupancy Sensor	29	3,985	0.1	526	0	\$77	\$146	\$40	1.4
Room 412 Group Study	3	Linear Fluorescent - T8: 4' T8 (32W) - 1L	Occupancy Sensor	S	32	3,985	2	Relamp	No	3	LED - Linear Tubes: (1) 4' Lamp	Occupancy Sensor	15	3,985	0.0	209	0	\$31	\$55	\$15	1.3
Room 412 Group Study	4	Linear Fluorescent - T8: 4' T8 (32W) - 2L	Occupancy Sensor	S	62	3,985	2	Relamp	No	4	LED - Linear Tubes: (2) 4' Lamps	Occupancy Sensor	29	3,985	0.1	526	0	\$77	\$146	\$40	1.4
Room 413 Group Study	4	Linear Fluorescent - T8: 4' T8 (32W) - 1L	Occupancy Sensor	S	32	3,985	2	Relamp	No	4	LED - Linear Tubes: (1) 4' Lamp	Occupancy Sensor	15	3,985	0.0	279	0	\$41	\$73	\$20	1.3
Room 413 Group Study	5	Linear Fluorescent - T8: 4' T8 (32W) - 2L	Occupancy Sensor	S	62	3,985	2	Relamp	No	5	LED - Linear Tubes: (2) 4' Lamps	Occupancy Sensor	29	3,985	0.1	657	0	\$96	\$183	\$50	1.4
Room 414 Group Study	4	Linear Fluorescent - T8: 4' T8 (32W) - 2L	Occupancy Sensor	S	62	3,985	2	Relamp	No	4	LED - Linear Tubes: (2) 4' Lamps	Occupancy Sensor	29	3,985	0.1	526	0	\$77	\$146	\$40	1.4
Room 415 Group Study	4	Linear Fluorescent - T8: 4' T8 (32W) - 2L	Occupancy Sensor	S	62	3,985	2	Relamp	No	4	LED - Linear Tubes: (2) 4' Lamps	Occupancy Sensor	29	3,985	0.1	526	0	\$77	\$146	\$40	1.4
Sprinkler Room	2	Linear Fluorescent - T8: 4' T8 (32W) - 2L	Wall Switch	S	62	5,250	2	Relamp	No	2	LED - Linear Tubes: (2) 4' Lamps	Wall Switch	29	5,250	0.0	347	0	\$51	\$73	\$20	1.0



Existing Conditions							Proposed Conditions								Energy Impact & Financial Analysis						
Location	Fixture Quantity	Fixture Description	Control System	Light Level	Watts per Fixture	Annual Operating Hours	ECM #	Fixture Recommendation	Add Controls?	Fixture Quantity	Fixture Description	Control System	Watts per Fixture	Annual Operating Hours	Total Peak kW Savings	Total Annual kWh Savings	Total Annual MMBtu Savings	Total Annual Energy Cost Savings	Estimated M&L Cost (\$)	Total Incentives	Simple Payback w/ Incentives in Years
Stairs Basement	6	Compact Fluorescent: (1) 26W 4-PIN Lamp	Wall Switch	S	26	5,250	2, 4	Relamp	Yes	6	LED Lamps: Plug-In Lamp	High/Low Control	18	3,623	0.0	423	0	\$62	\$375	\$240	2.2
Stairs 3rd Floor	4	Compact Fluorescent: (1) 26W 4-PIN Lamp	Wall Switch	S	26	5,250	2, 4	Relamp	Yes	4	LED Lamps: Plug-In Lamp	High/Low Control	18	3,623	0.0	282	0	\$41	\$325	\$160	4.0
Stairs 3rd Floor	1	Compact Fluorescent: (2) 26W 4-PIN Lamps	Wall Switch	S	52	5,250	2	Relamp	No	1	LED Lamps: Plug-In Lamp	Wall Switch	36	5,250	0.0	82	0	\$12	\$50	\$10	3.3
Stairs 3rd Floor	3	LED-Fixture: 11W Recessed Lamp	Wall Switch	S	11	5,250		None	No	3	LED-Fixture: 11W Recessed Lamp	Wall Switch	11	5,250	0.0	0	0	\$0	\$0	\$0	0.0
Stairs Roof Access	17	Linear Fluorescent - T8: 4' T8 (32W) - 2L	Wall Switch	S	62	5,250	2, 4	Relamp	Yes	17	LED - Linear Tubes: (2) 4' Lamps	High/Low Control	29	3,623	0.4	3,748	-1	\$548	\$1,521	\$765	1.4
Storage Room 16	2	Linear Fluorescent - T8: 4' T8 (32W) - 2L	Wall Switch	S	62	2,100	2, 3	Relamp	Yes	2	LED - Linear Tubes: (2) 4' Lamps	Occupancy Sensor	29	1,449	0.0	176	0	\$26	\$189	\$20	6.6
Study Area 3rd Floor	1	Exit Signs: LED - 2 W Lamp	None		6	8,760		None	No	1	Exit Signs: LED - 2 W Lamp	None	6	8,760	0.0	0	0	\$0	\$0	\$0	0.0
Study Area 3rd Floor	18	Linear Fluorescent - T8: 4' T8 (32W) - 2L	Wall Switch	S	62	5,250	2, 3	Relamp	Yes	18	LED - Linear Tubes: (2) 4' Lamps	Occupancy Sensor	29	3,623	0.4	3,968	-1	\$580	\$1,197	\$250	1.6

Motor Inventory & Recommendations

		Existing Conditions									Proposed Conditions					Energy Impact & Financial Analysis						
Location	Area(s)/System(s) Served	Motor Quantity	Motor Application	HP Per Motor	Full Load Efficiency	VFD Control?	Manufacturer	Model	Remaining Useful Life	Annual Operating Hours	ECM #	Install High Efficiency Motors?	Full Load Efficiency	Install VFDs?	Number of VFDs	Total Peak kW Savings	Total Annual kWh Savings	Total Annual MMBtu Savings	Total Annual Energy Cost Savings	Estimated M&L Cost (\$)	Total Incentives	Simple Payback w/ Incentives in Years
Basement East - Mech Room	Control System	1	Air Compressor	5.0	89.5%	No	Baldor		W	1,820		No	89.5%	No		0.0	0	0	\$0	\$0	\$0	0.0
Basement West - Mech Room	Chilled Water - P3P4	2	Chilled Water Pump	40.0	93.0%	Yes	Emerson		W	3,128		No	93.0%	No		0.0	0	0	\$0	\$0	\$0	0.0
Basement West - Mech Room	Condensate System	2	Condensate Pump	3.0	82.3%	Yes	A O Smith		W	3,020		No	82.3%	No		0.0	0	0	\$0	\$0	\$0	0.0
Electrical Room 121C	Exhaust System	1	Exhaust Fan	0.5	70.0%	No			W	5,765		No	70.0%	No		0.0	0	0	\$0	\$0	\$0	0.0
Basement East - Mech Room	Exhaust System	2	Exhaust Fan	1.5	82.0%	No			W	5,765	6	No	86.5%	Yes	2	1.0	5,916	0	\$870	\$6,781	\$150	7.6
Electrical Room 020	Exhaust System	1	Exhaust Fan	0.5	70.0%	No			W	5,765		No	70.0%	No		0.0	0	0	\$0	\$0	\$0	0.0
Electrical Room 107	Exhaust System	1	Exhaust Fan	1.0	82.0%	No			W	5,765		No	82.0%	No		0.0	0	0	\$0	\$0	\$0	0.0
Electrical Room 13	Exhaust System	1	Exhaust Fan	0.5	70.0%	No			W	5,765		No	70.0%	No		0.0	0	0	\$0	\$0	\$0	0.0
Electrical Room 302	Exhaust System	1	Exhaust Fan	0.5	70.0%	No			W	5,765		No	70.0%	No		0.0	0	0	\$0	\$0	\$0	0.0
Electrical Room 318	Exhaust System	1	Exhaust Fan	0.5	70.0%	No			W	5,765		No	70.0%	No		0.0	0	0	\$0	\$0	\$0	0.0
Electrical Room 420	Exhaust System	1	Exhaust Fan	1.0	82.0%	No			W	5,765	6	No	85.5%	Yes	1	0.3	1,933	0	\$284	\$3,283	\$75	11.3
Electric Room 227	Exhaust System	1	Exhaust Fan	0.5	70.0%	No			W	5,765		No	70.0%	No		0.0	0	0	\$0	\$0	\$0	0.0
Basement West - Mech Room	Heating Hot Water - HWP-1,2	2	Heating Hot Water Pump	30.0	92.4%	Yes			W	3,128		No	92.4%	No		0.0	0	0	\$0	\$0	\$0	0.0
Basement West - Mech Room	Sewage Pump	1	Other	1.0	82.0%	No			W	1,525		No	82.0%	No		0.0	0	0	\$0	\$0	\$0	0.0
Basement East - Mech Room	Sewage Pump	2	Other	1.0	82.0%	No			W	1,525		No	82.0%	No		0.0	0	0	\$0	\$0	\$0	0.0
Elevator Room 12	Elevators 1,2,3	3	Other	50.0	91.7%	No			W	1,344		No	91.7%	No		0.0	0	0	\$0	\$0	\$0	0.0
Basement East - Mech Room	Supply Fan AHU-1 - Lower Level	1	Supply Fan	7.5	88.5%	Yes			W	5,765	5	Yes	91.0%	No		0.1	751	0	\$110	\$1,131	\$0	10.2
Basement West - Mech Room	Supply Fan AHU-2 - Lower Level	1	Supply Fan	20.0	91.0%	Yes			W	5,765	5	Yes	93.0%	No		0.2	1,524	0	\$224	\$2,248	\$0	10.0
Basement West - Mech Room	Return Fan AHU-2 - Lower Level	1	Return Fan	15.0	91.0%	Yes			W	5,765	5	Yes	93.0%	No		0.1	1,143	0	\$168	\$1,847	\$0	11.0
Basement West - Mech Room	Supply Fan AHU-3 - 1st Floor	1	Supply Fan	20.0	91.0%	Yes			W	5,765	5	Yes	93.0%	No		0.2	1,524	0	\$224	\$2,248	\$0	10.0

		Existing Conditions									Proposed Conditions					Energy Impact & Financial Analysis						
Location	Area(s)/System(s) Served	Motor Quantity	Motor Application	HP Per Motor	Full Load Efficiency	VFD Control?	Manufacturer	Model	Remaining Useful Life	Annual Operating Hours	ECM #	Install High Efficiency Motors?	Full Load Efficiency	Install VFDs?	Number of VFDs	Total Peak kW Savings	Total Annual kWh Savings	Total Annual MMBtu Savings	Total Annual Energy Cost Savings	Estimated M&L Cost (\$)	Total Incentives	Simple Payback w/ Incentives in Years
Basement West - Mech Room	Return Fan AHU-3 - 1st Floor	1	Return Fan	15.0	91.0%	Yes			W	5,765	5	Yes	93.0%	No		0.1	1,143	0	\$168	\$1,847	\$0	11.0
Basement East - Mech Room	Supply Fan AHU-4 - 1st Floor	1	Supply Fan	20.0	91.0%	Yes			W	5,765	5	Yes	93.0%	No		0.2	1,524	0	\$224	\$2,248	\$0	10.0
Basement East - Mech Room	Return Fan AHU-4 - 1st Floor	1	Return Fan	15.0	91.0%	Yes			W	5,765	5	Yes	93.0%	No		0.1	1,143	0	\$168	\$1,847	\$0	11.0
Basement West - Mech Room	Supply Fan AHU-5 - 2nd Floor	1	Supply Fan	20.0	91.0%	Yes			W	5,765	5	Yes	93.0%	No		0.2	1,524	0	\$224	\$2,248	\$0	10.0
Basement West - Mech Room	Return Fan AHU-5 - 2nd Floor	1	Return Fan	10.0	91.0%	Yes			W	5,765		No	91.0%	No		0.0	0	0	\$0	\$0	\$0	0.0
Basement East - Mech Room	Supply Fan AHU-6 - 2nd Floor	1	Supply Fan	20.0	91.0%	Yes			W	5,765	5	Yes	93.0%	No		0.2	1,524	0	\$224	\$2,248	\$0	10.0
Basement East - Mech Room	Return Fan AHU-6 - 2nd Floor	1	Return Fan	15.0	91.0%	Yes			W	5,765	5	Yes	93.0%	No		0.1	1,143	0	\$168	\$1,847	\$0	11.0
Basement West - Mech Room	Supply Fan AHU-7 - 3rd Floor	1	Supply Fan	20.0	91.0%	Yes			W	5,765	5	Yes	93.0%	No		0.2	1,524	0	\$224	\$2,248	\$0	10.0
Basement West - Mech Room	Return Fan AHU-7 - 3rd Floor	1	Return Fan	15.0	91.0%	Yes			W	5,765	5	Yes	93.0%	No		0.1	1,143	0	\$168	\$1,847	\$0	11.0
Basement East - Mech Room	Supply Fan AHU-8 - 3rd Floor	1	Supply Fan	40.0	94.1%	Yes			W	5,765		No	94.1%	No		0.0	0	0	\$0	\$0	\$0	0.0
Basement East - Mech Room	Return Fan AHU-8 - 3rd Floor	1	Return Fan	20.0	91.0%	Yes			W	5,765	5	Yes	93.0%	No		0.2	1,524	0	\$224	\$2,248	\$0	10.0
Basement West - Mech Room	Supply Fan AHU-9 - 4th Floor	1	Supply Fan	25.0	93.6%	Yes			W	5,765		No	93.6%	No		0.0	0	0	\$0	\$0	\$0	0.0
Basement West - Mech Room	Return Fan AHU-9 - 4th Floor	1	Return Fan	15.0	91.0%	Yes			W	5,765	5	Yes	93.0%	No		0.1	1,143	0	\$168	\$1,847	\$0	11.0
Basement East - Mech Room	Supply Fan AHU-10 - 4th Floor	1	Supply Fan	25.0	93.0%	Yes			W	5,765		No	93.0%	No		0.0	0	0	\$0	\$0	\$0	0.0
Basement East - Mech Room	Return Fan AHU-10 - 4th Floor	1	Return Fan	15.0	91.0%	Yes			W	5,765	5	Yes	93.0%	No		0.1	1,143	0	\$168	\$1,847	\$0	11.0
Basement West - Mech Room	Domestic Water Supply	2	Water Supply Pump	7.5	88.5%	No			W	4,380		No	88.5%	No		0.0	0	0	\$0	\$0	\$0	0.0
Stairs & Back Entrance	Stairs & Back Entrance	2	Fan Coil Unit	0.1	65.0%	No			W	4,118		No	65.0%	No		0.0	0	0	\$0	\$0	\$0	0.0
Roof	EF-1	1	Exhaust Fan	2.0	81.0%	No			W	5,765	6	No	86.5%	Yes	1	0.7	4,032	0	\$593	\$3,623	\$100	5.9
Roof	EF-2	1	Exhaust Fan	0.5	70.0%	No			W	5,765		No	70.0%	No		0.0	0	0	\$0	\$0	\$0	0.0
Telecommunication & Elevator Rooms	Telecommunication & Elevator Rooms	2	Supply Fan	0.3	65.0%	No	Daikin	RXYMQ48MVJU	B	8,760		No	65.0%	No		0.0	0	0	\$0	\$0	\$0	0.0

Packaged HVAC Inventory & Recommendations

		Existing Conditions									Proposed Conditions								Energy Impact & Financial Analysis						
Location	Area(s)/System(s) Served	System Quantity	System Type	Cooling Capacity per Unit (Tons)	Heating Capacity per Unit (MBh)	Cooling Mode Efficiency (SEER/IEER/EER)	Heating Mode Efficiency	Manufacturer	Model	Remaining Useful Life	ECM #	Install High Efficiency System?	System Quantity	System Type	Cooling Capacity per Unit (Tons)	Heating Capacity per Unit (MBh)	Cooling Mode Efficiency (SEER/IEER/EER)	Heating Mode Efficiency	Total Peak kW Savings	Total Annual kWh Savings	Total Annual MMBtu Savings	Total Annual Energy Cost Savings	Estimated M&L Cost (\$)	Total Incentives	Simple Payback w/ Incentives in Years
Roof	Telecommunication & Elevator Rooms	2	Split-System Air-Source HP	4.00	54.00	12.70	5.8 HSPF	Daikin	RXYMQ48MVJU	B	7	Yes	2	Split-System Air-Source HP	4.00	54.00	15.50	8.5 HSPF	6.2	8,694	0	\$1,279	\$13,527	\$800	10.0

Electric Chiller Inventory & Recommendations

		Existing Conditions						Proposed Conditions								Energy Impact & Financial Analysis						
Location	Area(s)/System(s) Served	Chiller Quantity	System Type	Cooling Capacity per Unit (Tons)	Manufacturer	Model	Remaining Useful Life	ECM #	Install High Efficiency Chillers?	Chiller Quantity	System Type	Constant/Variable Speed	Cooling Capacity (Tons)	Full Load Efficiency (kW/Ton)	IPLV Efficiency (kW/Ton)	Total Peak kW Savings	Total Annual kWh Savings	Total Annual MMBtu Savings	Total Annual Energy Cost Savings	Estimated M&L Cost (\$)	Total Incentives	Simple Payback w/ Incentives in Years
Central Plant	Building Chilled Water	1	Water-Cooled Centrifugal Chiller	417.00	Central Plant	Proxy Chiller	W		No							0.0	0	0	\$0	\$0	\$0	0.0

Space Heating Boiler Inventory & Recommendations

		Existing Conditions						Proposed Conditions							Energy Impact & Financial Analysis						
Location	Area(s)/System(s) Served	System Quantity	System Type	Output Capacity per Unit (MBh)	Manufacturer	Model	Remaining Useful Life	ECM #	Install High Efficiency System?	System Quantity	System Type	Output Capacity per Unit (MBh)	Heating Efficiency	Heating Efficiency Units	Total Peak kW Savings	Total Annual kWh Savings	Total Annual MMBtu Savings	Total Annual Energy Cost Savings	Estimated M&L Cost (\$)	Total Incentives	Simple Payback w/ Incentives in Years
Central Plant	Building Space Heating	1	Forced Draft Steam Boiler	8,101	Central Plant	Proxy Boiler	W		No						0.0	0	0	\$0	\$0	\$0	0.0
Central Plant	Building Chilled Water	1	Other	5,004	Central Plant	Proxy Steam Chiller	W		No						0.0	0	0	\$0	\$0	\$0	0.0

DHW Inventory & Recommendations

		Existing Conditions					Proposed Conditions							Energy Impact & Financial Analysis						
Location	Area(s)/System(s) Served	System Quantity	System Type	Manufacturer	Model	Remaining Useful Life	ECM #	Replace?	System Quantity	System Type	Fuel Type	System Efficiency	Efficiency Units	Total Peak kW Savings	Total Annual kWh Savings	Total Annual MMBtu Savings	Total Annual Energy Cost Savings	Estimated M&L Cost (\$)	Total Incentives	Simple Payback w/ Incentives in Years
Central Plant	Building	1	Indirect System	Central Plant	Proxy Boiler	W		No						0.0	0	0	\$0	\$0	\$0	0.0

Commercial Refrigerator/Freezer Inventory & Recommendations

		Existing Conditions				Proposed Conditions		Energy Impact & Financial Analysis						
Location	Quantity	Refrigerator/ Freezer Type	Manufacturer	Model	ENERGY STAR Qualified?	ECM #	Install ENERGY STAR Equipment?	Total Peak kW Savings	Total Annual kWh Savings	Total Annual MMBtu Savings	Total Annual Energy Cost Savings	Estimated M&L Cost (\$)	Total Incentives	Simple Payback w/ Incentives in Years
Caffe	1	Refrigerator Chest	Encore Series	HOU7452R	No		No	0.0	0	0	\$0	\$0	\$0	0.0
Caffe	1	Stand-Up Freezer, Solid Door (>50 cu. ft.)	TRUE	TR2DT-25	Yes		No	0.0	0	0	\$0	\$0	\$0	0.0
Caffe	1	Stand-Up Refrigerator, Solid Door (31 - 50 cu. ft.)	TRUE	T-49	Yes		No	0.0	0	0	\$0	\$0	\$0	0.0

Commercial Ice Maker Inventory & Recommendations

		Existing Conditions				Proposed Conditions		Energy Impact & Financial Analysis						
Location	Quantity	Ice Maker Type	Manufacturer	Model	ENERGY STAR Qualified?	ECM #	Install ENERGY STAR Equipment?	Total Peak kW Savings	Total Annual kWh Savings	Total Annual MMBtu Savings	Total Annual Energy Cost Savings	Estimated M&L Cost (\$)	Total Incentives	Simple Payback w/ Incentives in Years
Caffe	1	Self-Contained Unit (≥175 lbs/day), Batch	Manitowoc	B570	No		No	0.0	0	0	\$0	\$0	\$0	0.0



Plug Load Inventory


Existing Conditions						
Location	Quantity	Equipment Description	Energy Rate (W)	ENERGY STAR Qualified?	Manufacturer	Model
R. Barbara G. Library	197	Desktop	120	Yes		
R. Barbara G. Library	5	Coffee Machine	600	No		
R. Barbara G. Library	2	Commercial Coffee Machine	6,600	No		
R. Barbara G. Library	4	Microwave	1,000	No		
R. Barbara G. Library	1	Commercial Microwave	5,990	No		
R. Barbara G. Library	3	Paper Shredder	200	No		
R. Barbara G. Library	10	Printer (Medium/Small)	150	Yes		
R. Barbara G. Library	21	Printer/Copier (Large)	600	Yes		
R. Barbara G. Library	4	Projector	240	Yes		
R. Barbara G. Library	1	Residential Style Refrigeratr	800	Yes		
R. Barbara G. Library	2	Refrigerator (Mini)	250	Yes		
R. Barbara G. Library	10	Television	220	Yes		
R. Barbara G. Library	2	Water Cooler	192	Yes		
R. Barbara G. Library	2	Toaster	400	No		
R. Barbara G. Library	1	Commercial Toaster	3,420	No		
R. Barbara G. Library	3	Server Closets	1,000	No		
R. Barbara G. Library	1	Hot Dog Roller Grill	1,350	No		
R. Barbara G. Library	2	Commercial Soda Dispenser	450	No		

Vending Machine Inventory & Recommendations


Existing Conditions		Proposed Conditions		Energy Impact & Financial Analysis							
Location	Quantity	Vending Machine Type	ECM #	Install Controls?	Total Peak kW Savings	Total Annual kWh Savings	Total Annual MMBtu Savings	Total Annual Energy Cost Savings	Estimated M&L Cost (\$)	Total Incentives	Simple Payback w/ Incentives in Years
Caffe	1	Glass Fronted Refrigerated	8	Yes	0.1	1,209	0	\$178	\$230	\$50	1.0
Caffe	1	Non-Refrigerated	N/A	No	0.0	0	0	\$0	\$0	\$0	0.0

APPENDIX B: ENERGY STAR® STATEMENT OF ENERGY PERFORMANCE

EUI is presented in terms of *site energy* and *source energy*. Site energy is the amount of fuel and electricity consumed by a building as reflected in utility bills. Source energy includes fuel consumed to generate electricity consumed at the site, factoring in electric production and distribution losses for the region.



ENERGY STAR® Statement of Energy Performance



**ENERGY STAR®
Score¹**

The College of New Jersey

Primary Property Type: College/University
Gross Floor Area (ft²): 2,830,421
Built: 1855

For Year Ending: January 31, 2020
Date Generated: December 13, 2020

1. The ENERGY STAR score is a 1-100 assessment of a building's energy efficiency as compared with similar buildings nationwide, adjusting for climate and business activity.

Property & Contact Information			
Property Address The College of New Jersey 2000 Pennington Road Ewing, New Jersey 08628		Property Owner The College of New Jersey 2000 Pennington Rd Ewing, NJ 08628 609-771-2874	Primary Contact David Matlack 2000 Pennington Road Ewing, NJ 08628 609-771-2874 sstewart@trccompanies.com
Property ID: 5984875			
Energy Consumption and Energy Use Intensity (EUI)			
Site EUI 229 kBtu/ft²	Annual Energy by Fuel		National Median Comparison
	Natural Gas (kBtu)	619,522,872 (96%)	National Median Site EUI (kBtu/ft²) 160.2
	Electric - Grid (kBtu)	28,774,949 (4%)	National Median Source EUI (kBtu/ft²) 180.6
			% Diff from National Median Source EUI 43%
Source EUI 258.3 kBtu/ft²			Annual Emissions
			Greenhouse Gas Emissions (Metric Tons CO2e/year) 35,660

Signature & Stamp of Verifying Professional

I _____ (Name) verify that the above information is true and correct to the best of my knowledge.

LP Signature: _____ Date: _____

Licensed Professional



Professional Engineer or Registered
Architect Stamp
(if applicable)

APPENDIX C: GLOSSARY

TERM	DEFINITION
Blended Rate	Used to calculate fiscal savings associated with measures. The blended rate is calculated by dividing the amount of your bill by the total energy use. For example, if your bill is \$22,217.22, and you used 266,400 kilowatt-hours, your blended rate is 8.3 cents per kilowatt-hour.
Btu	<i>British thermal unit</i> : a unit of energy equal to the amount of heat required to increase the temperature of one pound of water by one-degree Fahrenheit.
CHP	<i>Combined heat and power</i> . Also referred to as cogeneration.
COP	<i>Coefficient of performance</i> : a measure of efficiency in terms of useful energy delivered divided by total energy input.
Demand Response	Demand response reduces or shifts electricity usage at or among participating buildings/sites during peak energy use periods in response to time-based rates or other forms of financial incentives.
DCV	<i>Demand control ventilation</i> : a control strategy to limit the amount of outside air introduced to the conditioned space based on actual occupancy need.
US DOE	<i>United States Department of Energy</i>
EC Motor	<i>Electronically commutated motor</i>
ECM	<i>Energy conservation measure</i>
EER	<i>Energy efficiency ratio</i> : a measure of efficiency in terms of cooling energy provided divided by electric input.
EUI	<i>Energy Use Intensity</i> : measures energy consumption per square foot and is a standard metric for comparing buildings' energy performance.
Energy Efficiency	Reducing the amount of energy necessary to provide comfort and service to a building/area. Achieved through the installation of new equipment and/or optimizing the operation of energy use systems. Unlike conservation, which involves some reduction of service, energy efficiency provides energy reductions without sacrifice of service.
ENERGY STAR®	ENERGY STAR® is the government-backed symbol for energy efficiency. The ENERGY STAR® program is managed by the EPA.
EPA	<i>United States Environmental Protection Agency</i>
Generation	The process of generating electric power from sources of primary energy (e.g., natural gas, the sun, oil).
GHG	<i>Greenhouse gas</i> gases that are transparent to solar (short-wave) radiation but opaque to long-wave (infrared) radiation, thus preventing long-wave radiant energy from leaving Earth's atmosphere. The net effect is a trapping of absorbed radiation and a tendency to warm the planet's surface.
gpf	<i>Gallons per flush</i>

gpm	<i>Gallon per minute</i>
HID	<i>High intensity discharge:</i> high-output lighting lamps such as high-pressure sodium, metal halide, and mercury vapor.
hp	<i>Horsepower</i>
HPS	<i>High-pressure sodium:</i> a type of HID lamp
HSPF	<i>Heating seasonal performance factor:</i> a measure of efficiency typically applied to heat pumps. Heating energy provided divided by seasonal energy input.
HVAC	<i>Heating, ventilating, and air conditioning</i>
IHP 2014	US DOE Integral Horsepower rule. The current ruling regarding required electric motor efficiency.
IPLV	<i>Integrated part load value:</i> a measure of the part load efficiency usually applied to chillers.
kBtu	One thousand British thermal units
kW	<i>Kilowatt:</i> equal to 1,000 Watts.
kWh	<i>Kilowatt-hour:</i> 1,000 Watts of power expended over one hour.
LED	<i>Light emitting diode:</i> a high-efficiency source of light with a long lamp life.
LGEA	<i>Local Government Energy Audit</i>
Load	The total power a building or system is using at any given time.
Measure	A single activity, or installation of a single type of equipment, that is implemented in a building system to reduce total energy consumption.
MH	<i>Metal halide:</i> a type of HID lamp
MBh	<i>Thousand Btu per hour</i>
MBtu	<i>One thousand British thermal units</i>
MMBtu	<i>One million British thermal units</i>
MV	<i>Mercury Vapor:</i> a type of HID lamp
NJBPU	<i>New Jersey Board of Public Utilities</i>
NJCEP	<i>New Jersey's Clean Energy Program:</i> NJCEP is a statewide program that offers financial incentives, programs and services for New Jersey residents, business owners and local governments to help them save energy, money and the environment.
psig	<i>Pounds per square inch gauge</i>
Plug Load	Refers to the amount of power used in a space by products that are powered by means of an ordinary AC plug.
PV	<i>Photovoltaic:</i> refers to an electronic device capable of converting incident light directly into electricity (direct current).

SEER	<i>Seasonal energy efficiency ratio:</i> a measure of efficiency in terms of annual cooling energy provided divided by total electric input.
SEP	<i>Statement of energy performance:</i> a summary document from the ENERGY STAR® Portfolio Manager®.
Simple Payback	The amount of time needed to recoup the funds expended in an investment or to reach the break-even point between investment and savings.
SREC	<i>Solar renewable energy credit:</i> a credit you can earn from the state for energy produced from a photovoltaic array.
TREC	<i>Transition Incentive Renewable Energy Certificate:</i> a factorized renewable energy certificate you can earn from the state for energy produced from a photovoltaic array.
T5, T8, T12	A reference to a linear lamp diameter. The number represents increments of 1/8 th of an inch.
Temperature Setpoint	The temperature at which a temperature regulating device (thermostat, for example) has been set.
therm	100,000 Btu. Typically used as a measure of natural gas consumption.
tons	A unit of cooling capacity equal to 12,000 Btu/hr.
Turnkey	Provision of a complete product or service that is ready for immediate use
VAV	<i>Variable air volume</i>
VFD	<i>Variable frequency drive:</i> a controller used to vary the speed of an electric motor.
WaterSense®	The symbol for water efficiency. The WaterSense® program is managed by the EPA.
Watt (W)	Unit of power commonly used to measure electricity use.