



Local Government Energy Audit Report

J. Mark Mutter Records Center

November 19, 2020

Prepared for:

Toms River Township

1717 Church Road

Toms River, NJ 08753

Prepared by:

TRC

900 Route 9 North

Woodbridge, NJ 07095

Disclaimer

The goal of this audit report is to identify potential energy efficiency opportunities, help prioritize specific measures for implementation, and provide information about financial incentives that may be available. Most energy conservation measures have received preliminary analysis of feasibility that identifies expected ranges of savings and costs. This level of analysis is usually considered sufficient to establish a basis for further discussion and to help prioritize energy measures.

TRC reviewed the energy conservation measures and estimates of energy savings for technical accuracy. Actual, achieved energy savings depend on behavioral factors and other uncontrollable variables and, therefore, estimates of final energy savings are not guaranteed. TRC and the New Jersey Board of Public Utilities (NJBPU) shall in no event be liable should the actual energy savings vary.

TRC bases estimated installation costs on our experience at similar facilities, pricing from local contractors and vendors, and/or cost estimates from RS Means. Cost estimates include material and labor pricing associated with installation of primary recommended equipment only. Cost estimates do not include demolition or removal of hazardous waste. We encourage the owner of the facility to independently confirm these cost estimates and to obtain multiple estimates when considering measure installations. Actual installation costs can vary widely based on individual measures and conditions. TRC and NJBPU do not guarantee installed cost estimates and shall in no event be held liable should actual installed costs vary from estimates.

New Jersey's Clean Energy Program (NJCEP) incentive values provided in this report are estimates based on program information available at the time of the report. Incentive levels are not guaranteed. The NJBPU reserves the right to extend, modify, or terminate programs without prior notice. Please review all available program incentives and eligibility requirements prior to selecting and installing any energy conservation measures.

The customer and their respective contractor(s) are responsible to implement energy conservation measures in complete conformance with all applicable local, state and federal requirements.

Copyright ©2020 TRC. All rights reserved.

Reproduction or distribution of the whole, or any part of the contents of this document without written permission of TRC is prohibited. Neither TRC nor any of its employees makes any warranty, express or implied, or assumes any legal liability or responsibility for the accuracy, completeness, or usefulness of any data, information, method, product or process disclosed in this document, or represents that its use will not infringe upon any privately-owned rights, including but not limited to, patents, trademarks or copyrights.

Table of Contents

1	Executive Summary.....	1
1.1	Planning Your Project	4
	Pick Your Installation Approach	4
	More Options from Around the State	6
2	Existing Conditions.....	7
2.1	Site Overview.....	7
2.2	Building Occupancy	7
2.3	Building Envelope	7
2.4	Lighting Systems.....	8
2.5	Air Handling Systems.....	8
	Heating 8	
	Air Conditioners	8
2.6	Domestic Hot Water.....	9
2.7	Plug Load & Vending Machines.....	9
2.8	Water-Using Systems	9
3	Energy Use and Costs	10
3.1	Electricity.....	12
3.2	Natural Gas.....	13
3.3	Benchmarking.....	14
	Tracking Your Energy Performance.....	15
4	Energy Conservation Measures	16
4.1	Lighting	18
	ECM 1: Retrofit Fixtures with LED Lamps.....	18
4.2	Lighting Controls.....	19
	ECM 2: Install Occupancy Sensor Lighting Controls	19
5	Energy Efficient Best Practices.....	20
	Energy Tracking with ENERGY STAR® Portfolio Manager®	20
	Thermostat Schedules and Temperature Resets	20
	AC System Evaporator/Condenser Coil Cleaning	20
	Furnace Maintenance	21
	Optimize HVAC Equipment Schedules	21
	Water Heater Maintenance	21
	Water Conservation	22
	Procurement Strategies	22
6	On-site Generation	23
6.1	Solar Photovoltaic	24
6.2	Combined Heat and Power	25
7	Project Funding and Incentives.....	26

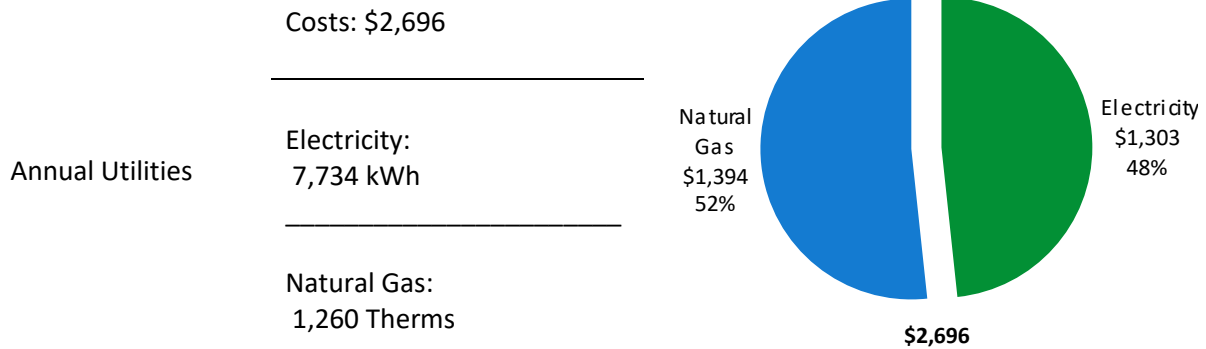


7.1	SmartStart	27
7.2	Direct Install	28
7.3	Pay for Performance - Existing Buildings.....	29
7.4	Combined Heat and Power	30
7.5	Energy Savings Improvement Program.....	31
7.6	Transition Incentive (TI) Program.....	32
8	Energy Purchasing and Procurement Strategies	33
8.1	Retail Electric Supply Options.....	33
8.2	Retail Natural Gas Supply Options	33
Appendix A: Equipment Inventory & Recommendations		A-1
Appendix B: ENERGY STAR® Statement of Energy Performance.....		B-1
Appendix C: Glossary		C-1

1 EXECUTIVE SUMMARY

The New Jersey Board of Public Utilities (NJBPB) has sponsored this Local Government Energy Audit (LGEA) report for J. Mark Mutter Records Center. This report provides you with information about your facility's energy use, identifies energy conservation measures (ECMs) that can reduce your energy use, and provides information and assistance to help make changes in your facility. TRC conducted this study as part of a comprehensive effort to assist New Jersey school districts and local governments in controlling their energy costs and to help protect our environment by reducing statewide energy consumption.

BUILDING PERFORMANCE REPORT



ENERGY STAR®
Benchmarking Score

N/A
(1-100 scale)

A standard energy use benchmark is not available for this facility type. This report contains suggestions about how to improve building performance and reduce energy costs.

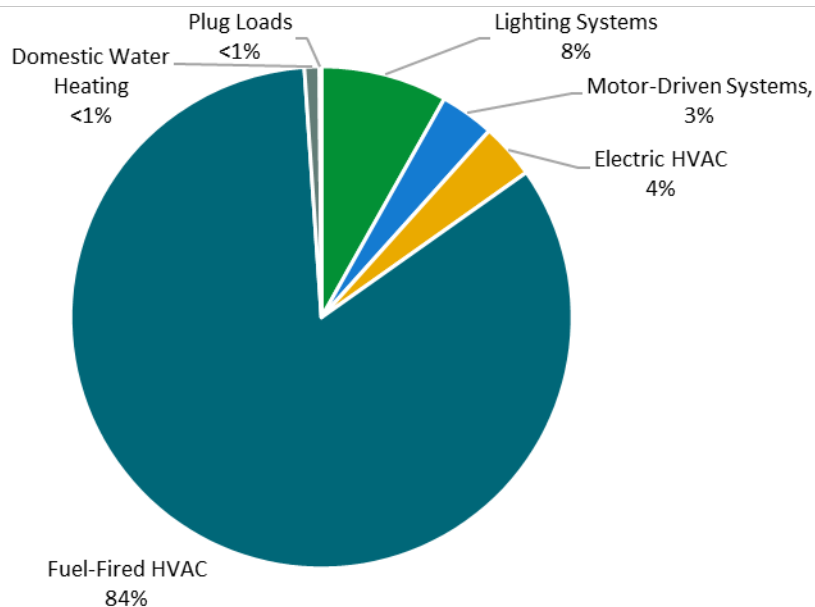


Figure 1 - Energy Use by System

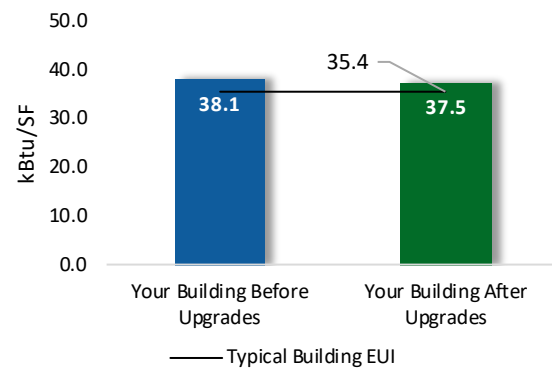
POTENTIAL IMPROVEMENTS



This energy audit considered a range of potential energy improvements in your building. Costs and savings will vary between improvements. Presented below are two potential scopes of work for your consideration.

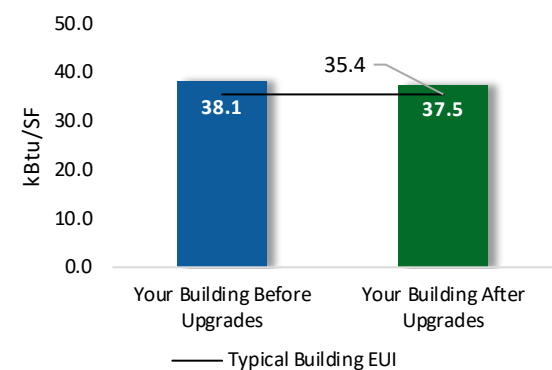
Scenario 1: Full Package (all evaluated measures)

Installation Cost	\$1,227
Potential Rebates & Incentives ¹	\$54
Annual Cost Savings	\$112
Annual Energy Savings	Electricity: 673 kWh
Greenhouse Gas Emission Savings	0 Tons
Simple Payback	10.4 Years
Site Energy Savings (all utilities)	1%



Scenario 2: Cost Effective Package²

Installation Cost	\$1,227
Potential Rebates & Incentives	\$54
Annual Cost Savings	\$112
Annual Energy Savings	Electricity: 673 kWh
Greenhouse Gas Emission Savings	0 Tons
Simple Payback	10.4 Years
Site Energy Savings (all utilities)	1%



On-site Generation Potential

Photovoltaic	None
Combined Heat and Power	None

¹ Incentives are based on current SmartStart Prescriptive incentives. Other Program incentives may apply.

² A cost-effective measure is defined as one where the simple payback does not exceed two-thirds of the expected proposed equipment useful life. Simple payback is based on the net measure cost after potential incentives.



#	Energy Conservation Measure	Cost Effective?	Annual Electric Savings (kWh)	Peak Demand Savings (kW)	Annual Fuel Savings (MMBtu)	Annual Energy Cost Savings (\$)	Estimated Install Cost (\$)	Estimated Incentive (\$)*	Estimated Net Cost (\$)	Simple Payback Period (yrs)**	CO ₂ e Emissions Reduction (lbs)
Lighting Upgrades			343	0.1	0	\$58	\$301	\$54	\$247	4.3	345
ECM 1	Retrofit Fixtures with LED Lamps	Yes	343	0.1	0	\$58	\$301	\$54	\$247	4.3	345
Lighting Control Measures			329	0.1	0	\$55	\$926	\$0	\$926	16.9	323
ECM 2	Install Occupancy Sensor Lighting Controls	Yes	329	0.1	0	\$55	\$926	\$0	\$926	16.9	323
TOTALS (COST EFFECTIVE MEASURES)			673	0.2	0	\$112	\$1,227	\$54	\$1,173	10.4	668
TOTALS (ALL MEASURES)			673	0.2	0	\$112	\$1,227	\$54	\$1,173	10.4	668

* - All incentives presented in this table are based on NJ SmartStart equipment incentives and assume proposed equipment meets minimum performance criteria for that program.
** - Simple Payback Period is based on net measure costs (i.e. after incentives).

Figure 2 – Evaluated Energy Improvements

For more detail on each evaluated energy improvement and a break out of cost-effective improvements, see **Section 4: Energy Conservation Measures**.

1.1 Planning Your Project

Careful planning makes for a successful energy project. When considering this scope of work, you will have some decisions to make, such as:

- ◆ How will the project be funded and/or financed?
- ◆ Is it best to pursue individual ECMs, groups of ECMs, or use a comprehensive approach where all ECMs are installed together?
- ◆ Are there other facility improvements that should happen at the same time?

Pick Your Installation Approach

New Jersey's Clean Energy Programs give you the flexibility to do a little or a lot. Rebates, incentives, and financing are available to help reduce both your installation costs and your energy bills. If you are planning to take advantage of these programs, make sure to review incentive program guidelines before proceeding. This is important because in most cases you will need to submit applications for the incentives before purchasing materials or starting installation.

The potential ECMs identified for this building likely qualify for multiple incentive and funding programs. Based on current program rules and requirements, your measures are likely to qualify for the following programs:

Energy Conservation Measure		SmartStart	Direct Install	Pay For Performance
ECM 1	Retrofit Fixtures with LED Lamps	x	x	
ECM 2	Install Occupancy Sensor Lighting Controls			

Figure 3 – Funding Options



New Jersey's Clean Energy Programs At-A-Glance

	SmartStart Flexibility to install at your own pace	Direct Install Turnkey installation	Pay for Performance Whole building upgrades
Who should use it?	Buildings installing individual measures or small group of measures.	Small to mid-size facilities that can bundle multiple measures together. Average peak demand should be below 200 kW. Not suitable for significant building shell issues.	Mid to large size facilities looking to implement as many measures as possible at one time. Peak demand should be over 200 kW.
How does it work?	Use in-house staff or your preferred contractor.	Pre-approved contractors pass savings along to you via reduced material and labor costs.	Whole-building approach to energy upgrades designed to reduce energy use by at least 15%. The more you save, the higher the incentives.
What are the Incentives?	Fixed incentives for specific energy efficiency measures.	Incentives pay up to 70% of eligible costs, up to \$125,000 per project. You pay the remaining 30% directly to the contractor.	Up to 25% of installation cost, calculated based on level of energy savings per square foot.
How do I participate?	Submit an application for the specific equipment to be installed.	Contact a participating contractor in your region.	Contact a pre-qualified Partner to develop your Energy Reduction Plan and set your energy savings targets.

Take the next step by visiting www.njcleanenergy.com for program details, applications, and to contact a qualified contractor.

Individual Measures with SmartStart

For facilities wishing to pursue only selected individual measures (or planning to phase implementation of selected measures over multiple years), incentives are available through the SmartStart program. To participate, you can use internal resources or an outside firm or contractor to perform the final design of the ECM(s) and install the equipment. Program pre-approval is required for some SmartStart incentives, so only after receiving pre-approval should you proceed with ECM installation.

Turnkey Installation with Direct Install

The Direct Install program provides turnkey installation of multiple measures through an authorized network of participating contractors. This program can provide substantially higher incentives than SmartStart, up to 70% of the cost of selected measures. Direct Install contractors will assess and verify individual measure eligibility, and, in most cases, they perform the installation work. The Direct Install program is available to sites with an average peak demand of less than 200 kW.

Whole Building Approach with Pay for Performance

Pay for Performance can be a good option for medium to large sized facilities to achieve deep energy savings. Pay for Performance allows you to install as many measures as possible under a single project as well as address measures that may not qualify for other programs. Many facilities pursuing an Energy Savings Improvement Program (ESIP) loan also use this program. Pay for Performance works for larger customers with a peak demand over 200 kW. The minimum installed scope of work must include at least two unique measures resulting in at least 15% energy savings, where lighting cannot make up the majority of the savings.

More Options from Around the State

Financing and Planning Support with the Energy Savings Improvement Program (ESIP)

For larger facilities with limited capital availability to implement ECMs, project financing may be available through the ESIP. Supported directly by the NJBPU, ESIP provides government agencies with project development, design, and implementation support services, as well as, attractive financing for implementing ECMs. You have already taken the first step as an LGEA customer, because this report is required to participate in ESIP.

Resiliency with Return on Investment through Combined Heat & Power (CHP)

The CHP program provides incentives for combined heat and power (aka cogeneration) and waste heat to power projects. Combined heat and power systems generate power on-site and recover heat from the generation system to meet on-site thermal loads. Waste heat to power systems use waste heat to generate power. You will work with a qualified developer who will design a system that meets your building's heating and cooling needs.

Ongoing Electric Savings with Demand Response

The Demand Response Energy Aggregator program reduces electric loads at commercial facilities when wholesale electricity prices are high or when the reliability of the electric grid is threatened due to peak power demand. By enabling commercial facilities to reduce electric demand during times of peak demand, the grid is made more reliable and overall transmission costs are reduced for all ratepayers. Curtailment service providers provide regular payments to medium and large consumers of electric power for their participation in demand response (DR) programs. Program participation is voluntary, and facilities receive payments regardless of whether they are called upon to curtail their load during times of peak demand.

2 EXISTING CONDITIONS

The New Jersey Board of Public Utilities (NJBP) has sponsored this Local Government Energy Audit (LGEA) Report for J. Mark Mutter Records Center. This report provides information on how your facility uses energy, identifies energy conservation measures (ECMs) that can reduce your energy use, and provides information and assistance to help you implement the ECMs. This report also contains valuable information on financial incentives from New Jersey's Clean Energy Program (NJCEP) for implementing ECMs.

TRC conducted this study as part of a comprehensive effort to assist New Jersey educational and local government facilities in controlling energy costs and protecting our environment by offering a wide range of energy management options and advice.

2.1 Site Overview

On June 30, 2020, TRC performed an energy audit at J. Mark Mutter Records Center located in Toms River, New Jersey. TRC met with Craig Ambrosio to review the facility operations and help focus our investigation on specific energy-using systems.

J. Mark Mutter Records Center is a one-story, 4,000 square foot building built in 2015. Spaces include main lobby, receiving room, storage, restroom and a shredding room.

2.2 Building Occupancy

The facility is occupied year-round for few hours a day with 2 full time employees.

Building Name	Weekday/Weekend	Operating Schedule
J. Mark Mutter Records Center	Weekday	3-4 hours a day
	Weekend	No operation

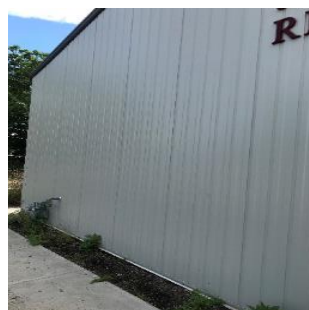
Figure 4 - Building Occupancy Schedule

2.3 Building Envelope

Building walls are made of vinyl siding. The building has a pitched, insulated roof with steel trusses.

The building does not have windows. The exterior doors are metal.

The site staff did not express any facility concerns.



Exterior walls



Roof view

2.4 Lighting Systems

The primary interior lighting system uses 7-Watt and 15-Watt, 2-foot and 4-foot long LED linear tube surface mounted fixtures. The attic spaces have a couple of linear fluorescent 4-foot T8 lamps. The restrooms are lit using a 65-Watt incandescent lamp and 9-Watt LED general purpose lamps. Typically, T8 fluorescent lamps use electronic ballasts.

The interior lighting is controlled using manual switches.

All exit signs are LED 2-Watt fixtures.

Most fixtures are in good condition and the interior lighting levels are sufficient.

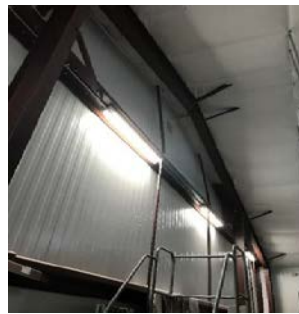
Exterior lighting for the facility consists of 45-Watt LED wall packs, 175-Watt LED pole fixtures and 10-Watt recessed LED fixtures. Most of the exterior lighting are controlled using photocells.



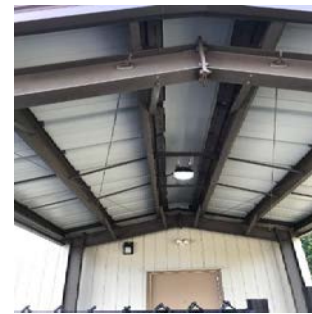
4-foot T8



LED fixture



LED Linear tubes



Exterior LED fixture

2.5 Air Handling Systems

Heating

Heating in the building is supplied by an 80% efficient Goodman Furnace with an output capacity of 80 MBh. The unit is within its useful life and well maintained. Space temperatures are controlled using programmable thermostats. The temperature setpoint is set to maintain 72°F.

Air Conditioners

Cooling in the building is provided by two 4-ton Goodman split AC units. The units have an EER rating of 13, which is reasonably efficient. The units were installed in 2014, are in good condition and well maintained. Space temperatures are controlled by the same programmable thermostats used to control the heating system.



Split AC units



Furnace



Programmable thermostat

2.6 Domestic Hot Water

Hot water is produced with a 9.5 kW electric tankless Eemax water heater. The unit was installed in 2014, is in good condition and well maintained.



Tankless water heater

2.7 Plug Load & Vending Machines

The location is doing a great job managing their electrical plug loads. This report makes additional suggestions for ECMs in this area as well as Energy Efficient Best Practices.

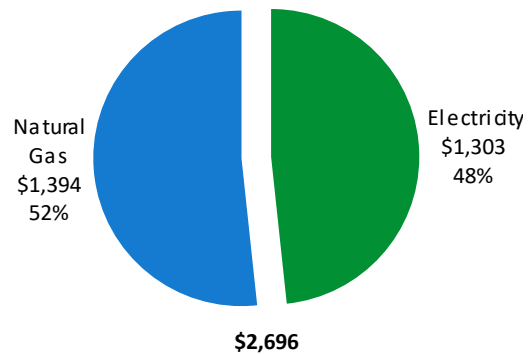
2.8 Water-Using Systems

The faucets have flow rates of 1.5 gallons per minute (gpm), toilets are rated at 1.6 gallons per flush (gpf) and urinals are rated at 1.0 gpf.

3 ENERGY USE AND COSTS

Twelve months of utility billing data are used to develop annual energy consumption and cost data. This information creates a profile of the annual energy consumption and energy costs.

Utility Summary		
Fuel	Usage	Cost
Electricity	7,734 kWh	\$1,303
Natural Gas	1,260 Therms	\$1,394
Total		\$2,696



An energy balance identifies and quantifies energy use in your various building systems. This can highlight areas with the most potential for improvement. This energy balance was developed using calculated energy use for each of the end uses noted in the figure.

The energy auditor collects information regarding equipment operating hours, capacity, efficiency, and other operational parameters from facility staff, drawings, and on-site observations. This information is used as the inputs to calculate the existing conditions energy use for the site. The calculated energy use is then compared to the historical energy use and the initial inputs are revised, as necessary, to balance the calculated energy use to the historical energy use.

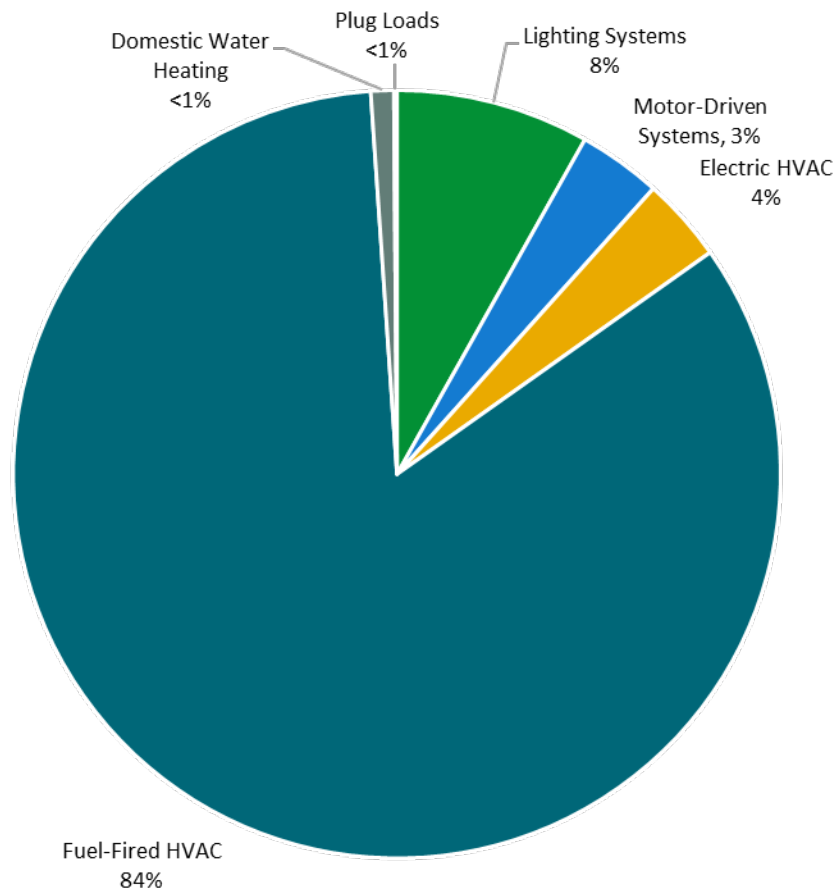
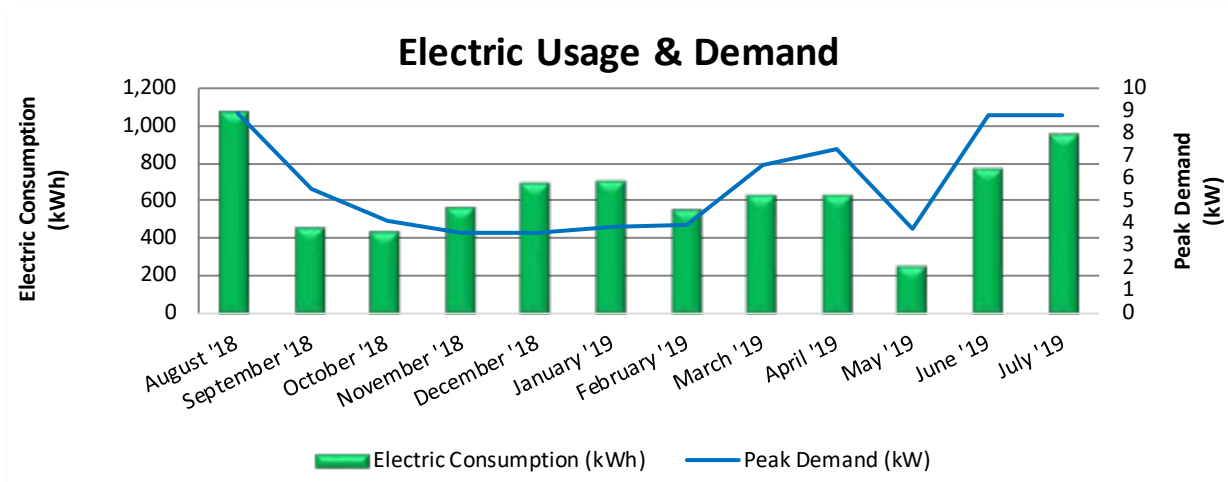


Figure 5 - Energy Balance

3.1 Electricity

JCP&L delivers electricity under rate class General Service Secondary JC_GS1_01F.



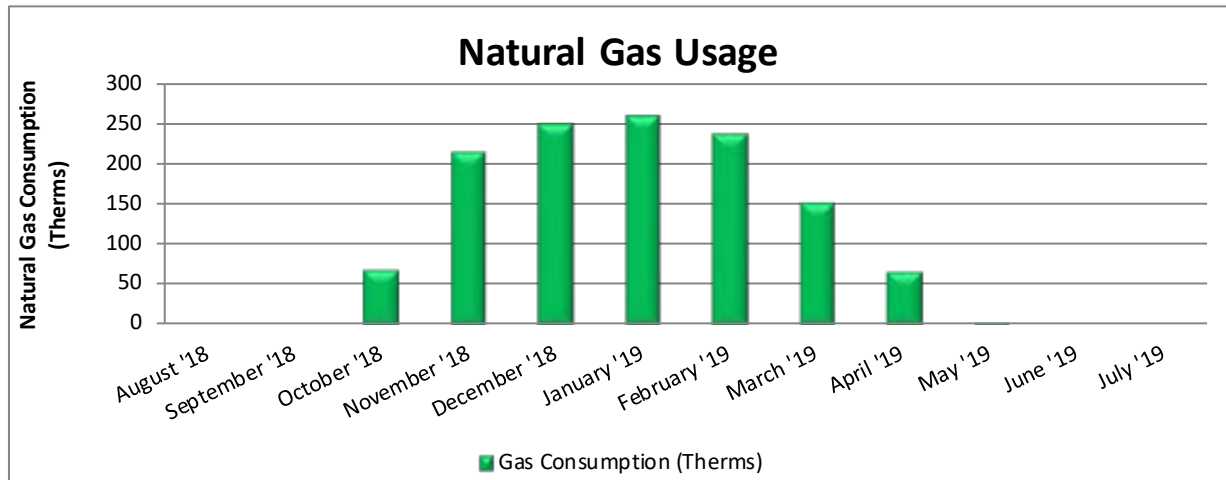
Electric Billing Data					
Period Ending	Days in Period	Electric Usage (kWh)	Demand (kW)	Demand Cost	Total Electric Cost
9/5/18	30	1,064	9		\$169
10/5/18	30	460	6		\$80
11/5/18	31	441	4		\$76
12/5/18	30	569	4		\$97
1/5/19	31	694	4		\$116
2/5/19	31	700	4		\$116
3/5/19	28	560	4		\$95
4/5/19	31	632	7		\$110
5/7/19	32	633	7		\$111
6/6/19	30	253	4		\$46
7/8/19	32	774	9		\$130
8/6/19	29	954	9		\$157
Totals	365	7,734	9	\$0	\$1,303
Annual	365	7,734	9	\$0	\$1,303

Notes:

- Peak demand of 9 kW occurred in August 2018.
- Average demand over the past 12 months was 6 kW.
- The average electric cost over the past 12 months was \$0.168/kWh, which is the blended rate that includes energy supply, distribution, demand, and other charges. This report uses this blended rate to estimate energy cost savings.

3.2 Natural Gas

NJ Natural Gas delivers natural gas under rate class 007SNN4G, with natural gas supply provided by UGI Energy, a third-party supplier.



Gas Billing Data			
Period Ending	Days in Period	Natural Gas Usage (Therms)	Natural Gas Cost
9/17/18	30	0	\$26
10/12/18	25	0	\$21
11/12/18	31	68	\$84
12/12/18	30	214	\$206
1/15/19	34	250	\$235
2/12/19	28	259	\$246
3/14/19	30	238	\$234
4/13/19	30	152	\$160
5/17/19	34	67	\$89
6/17/19	31	2	\$28
7/15/19	28	0	\$26
8/15/19	31	0	\$26
Totals	362	1,250	\$1,382
Annual	365	1,260	\$1,394

Notes:

- The average gas cost for the past 12 months is \$1.106/therm, which is the blended rate used throughout the analysis.

3.3 Benchmarking

Your building was benchmarked using the United States Environmental Protection Agency's (EPA) *Portfolio Manager*® software. Benchmarking compares your building's energy use to that of similar buildings across the country, while neutralizing variations due to location, occupancy and operating hours. Some building types can be scored with a 1-100 ranking of a building's energy performance relative to the national building market. A score of 50 represents the national average and a score of 100 is best.

This ENERGY STAR® benchmarking score provides a comprehensive snapshot of your building's energy performance. It assesses the building's physical assets, operations, and occupant behavior, which is compiled into a quick and easy-to-understand score.

Benchmarking Score

N/A

Due to its unique characteristics, this building type is not able to receive a benchmarking score. This report contains suggestions about how to improve building performance and reduce energy costs.

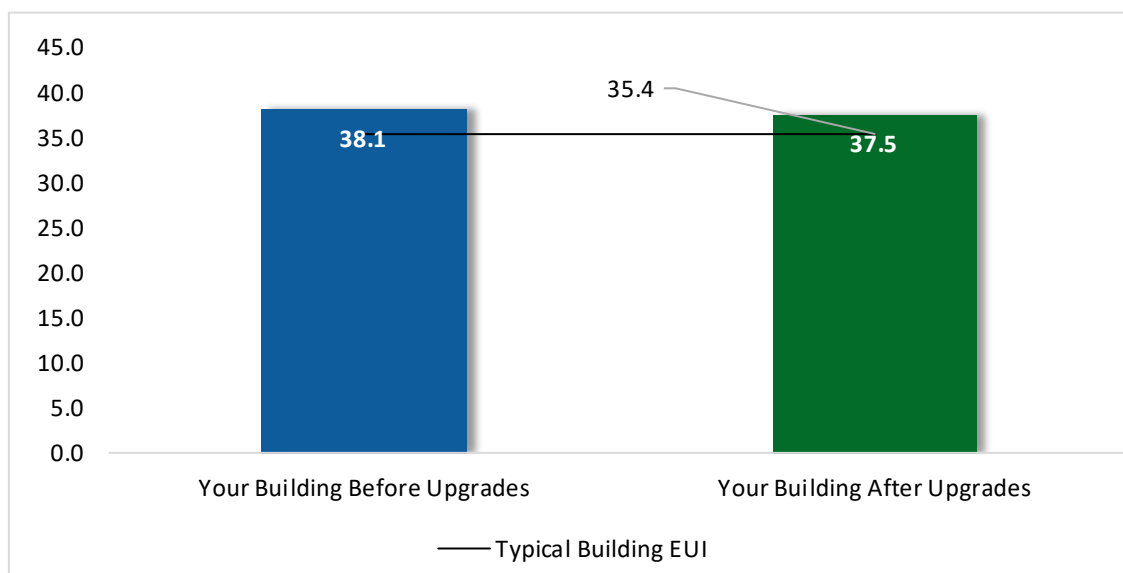


Figure 6 - Energy Use Intensity Comparison³

Energy use intensity (EUI) measures energy consumption per square foot and is the standard metric for comparing buildings' energy performance. A lower EUI means better performance and less energy consumed. A number of factors can cause a building to vary from the "typical" energy usage. Local weather conditions, building age and insulation levels, equipment efficiency, daily occupancy hours, changes in occupancy throughout the year, equipment operating hours, and occupant behavior all contribute to a building's energy use and the benchmarking score.

For wastewater treatment plants the energy use intensity is the total source energy use of the property divided by the average influent flow (in gallons per day).

³ Based on all evaluated ECMs

Tracking Your Energy Performance

Keeping track of your energy use on a monthly basis is one of the best ways to keep energy costs in check. Update your utility information in Portfolio Manager® regularly, so that you can keep track of your building's performance.

We have created a Portfolio Manager® account for your facility and we have already entered the monthly utility data shown above for you. Account login information for your account will be sent via email.

Free online training is available to help you use ENERGY STAR® Portfolio Manager® to track your building's performance at: <https://www.energystar.gov/buildings/training>.

For more information on ENERGY STAR® and Portfolio Manager®, visit their website⁴.

⁴ <https://www.energystar.gov/buildings/facility-owners-and-managers/existing-buildings/earn-recognition/energy-star-certification/how-app-1>.

4 ENERGY CONSERVATION MEASURES

The goal of this audit report is to identify and evaluate potential energy efficiency improvements, provide information about the cost effectiveness of those improvements, and recognize potential financial incentives from NJBPU. Most energy conservation measures have received preliminary analysis of feasibility which identifies expected ranges of savings and costs. This level of analysis is typically sufficient to demonstrate project cost-effectiveness and help prioritize energy measures.

Calculations of energy use and savings are based on the current version of the *New Jersey's Clean Energy Program Protocols to Measure Resource Savings*, which is approved by the NJBPU. Further analysis or investigation may be required to calculate more precise savings based on specific circumstances.

Operation and maintenance costs for the proposed new equipment will generally be lower than the current costs for the existing equipment—especially if the existing equipment is at or past its normal useful life. We have conservatively assumed there to be no impact on overall maintenance costs over the life of the equipment.

Financial incentives are based on the current NJCEP prescriptive SmartStart program. A higher level of investigation may be necessary to support any SmartStart Custom, Pay for Performance, or Direct Install incentive applications. Some measures and proposed upgrades may be eligible for higher incentives than those shown below through other NJCEP programs described in a following section of this report.

For a detailed list of the locations and recommended energy conservation measures for all inventoried equipment, see **Appendix A: Equipment Inventory & Recommendations**.



#	Energy Conservation Measure	Cost Effective?	Annual Electric Savings (kWh)	Peak Demand Savings (kW)	Annual Fuel Savings (MMBtu)	Annual Energy Cost Savings (\$)	Estimated Install Cost (\$)	Estimated Incentive (\$)*	Estimated Net Cost (\$)	Simple Payback Period (yrs)**	CO ₂ e Emissions Reduction (lbs)
Lighting Upgrades			343	0.1	0	\$58	\$301	\$54	\$247	4.3	345
ECM 1	Retrofit Fixtures with LED Lamps	Yes	343	0.1	0	\$58	\$301	\$54	\$247	4.3	345
Lighting Control Measures			329	0.1	0	\$55	\$926	\$0	\$926	16.9	323
ECM 2	Install Occupancy Sensor Lighting Controls	Yes	329	0.1	0	\$55	\$926	\$0	\$926	16.9	323
TOTALS			673	0.2	0	\$112	\$1,227	\$54	\$1,173	10.4	668

* - All incentives presented in this table are based on NJ SmartStart equipment incentives and assume proposed equipment meets minimum performance criteria for that program.

** - Simple Payback Period is based on net measure costs (i.e. after incentives).

Figure 7 – All Evaluated ECMs

#	Energy Conservation Measure	Annual Electric Savings (kWh)	Peak Demand Savings (kW)	Annual Fuel Savings (MMBtu)	Annual Energy Cost Savings (\$)	Estimated Install Cost (\$)	Estimated Incentive (\$)*	Estimated Net Cost (\$)	Simple Payback Period (yrs)**	CO ₂ e Emissions Reduction (lbs)
Lighting Upgrades		343	0.1	0	\$58	\$301	\$54	\$247	4.3	345
ECM 1	Retrofit Fixtures with LED Lamps	343	0.1	0	\$58	\$301	\$54	\$247	4.3	345
Lighting Control Measures		329	0.1	0	\$55	\$926	\$0	\$926	16.9	323
ECM 2	Install Occupancy Sensor Lighting Controls	329	0.1	0	\$55	\$926	\$0	\$926	16.9	323
TOTALS		673	0.2	0	\$112	\$1,227	\$54	\$1,173	10.4	668

* - All incentives presented in this table are based on NJ SmartStart equipment incentives and assume proposed equipment meets minimum performance criteria for that program.

** - Simple Payback Period is based on net measure costs (i.e. after incentives).

Figure 8 – Cost Effective ECMs

4.1 Lighting

#	Energy Conservation Measure	Annual Electric Savings (kWh)	Peak Demand Savings (kW)	Annual Fuel Savings (MMBtu)	Annual Energy Cost Savings (\$)	Estimated Install Cost (\$)	Estimated Incentive (\$)*	Estimated Net Cost (\$)	Simple Payback Period (yrs)**	CO ₂ e Emissions Reduction (lbs)
Lighting Upgrades		343	0.1	0	\$58	\$301	\$54	\$247	4.3	345
ECM 1	Retrofit Fixtures with LED Lamps	343	0.1	0	\$58	\$301	\$54	\$247	4.3	345

When considering lighting upgrades, we suggest using a comprehensive design approach that simultaneously upgrades lighting fixtures and controls to maximize energy savings and improve occupant lighting. Comprehensive design will also consider appropriate lighting levels for different space types to make sure that the right amount of light is delivered where needed. If conversion to LED light sources are proposed, we suggest converting all of a specific lighting type (e.g., linear fluorescent) to LED lamps to minimize the number of lamp types in use at the facility, which should help reduce future maintenance costs.

ECM 1: Retrofit Fixtures with LED Lamps

Replace fluorescent or incandescent lamps with LED lamps. Many LED tubes are direct replacements for existing fluorescent tubes and can be installed while leaving the fluorescent fixture ballast in place. LED lamps can be used in existing fixtures as a direct replacement for most other lighting technologies.

This measure saves energy by installing LEDs which use less power than other lighting technologies yet provide equivalent lighting output for the space. Maintenance savings may also be available, as longer-lasting LEDs lamps will not need to be replaced as often as the existing lamps.

Affected building areas: all areas with fluorescent fixtures with T8 tubes (attic) and incandescent lamps (restroom).

4.2 Lighting Controls

#	Energy Conservation Measure	Annual Electric Savings (kWh)	Peak Demand Savings (kW)	Annual Fuel Savings (MMBtu)	Annual Energy Cost Savings (\$)	Estimated Install Cost (\$)	Estimated Incentive (\$)*	Estimated Net Cost (\$)	Simple Payback Period (yrs)**	CO ₂ e Emissions Reduction (lbs)
Lighting Control Measures		329	0.1	0	\$55	\$926	\$0	\$926	16.9	323
ECM 2	Install Occupancy Sensor Lighting Controls	329	0.1	0	\$55	\$926	\$0	\$926	16.9	323

Lighting controls reduce energy use by turning off or lowering lighting fixture power levels when not in use. A comprehensive approach to lighting design should upgrade the lighting fixtures and the controls together for maximum energy savings and improved lighting for occupants.

ECM 2: Install Occupancy Sensor Lighting Controls

Install occupancy sensors to control lighting fixtures in areas that are frequently unoccupied, even for short periods. For most spaces, we recommend that lighting controls use dual technology sensors, which reduce the possibility of lights turning off unexpectedly.

Occupancy sensors detect occupancy using ultrasonic and/or infrared sensors. When an occupant enters the space, the lighting fixtures switch to full lighting levels. Most occupancy sensor lighting controls allow users to manually turn fixtures on/off, as needed. Some controls can also provide dimming options.

Occupancy sensors can be mounted on the wall at existing switch locations, mounted on the ceiling, or in remote locations. In general, wall switch replacement sensors are best suited to single occupant offices and other small rooms. Ceiling-mounted or remote mounted sensors are used in large spaces, locations without local switching, and where wall switches are not in the line-of-sight of the main work area.

This measure provides energy savings by reducing the lighting operating hours.

Affected building areas: record storage and receiving room.

5 ENERGY EFFICIENT BEST PRACTICES

A whole building maintenance plan will extend equipment life; improve occupant comfort, health, and safety; and reduce energy and maintenance costs.

Operation and maintenance (O&M) plans enhance the operational efficiency of HVAC and other energy intensive systems and could save between 5 to 20 percent of the energy usage in your building without substantial capital investment. A successful plan includes your records of energy usage trends and costs, building equipment lists, current maintenance practices, planned capital upgrades, and incorporates your ideas for improved building operation. Your plan will address goals for energy-efficient operation, provide detail on how to reach the goals, and will outline procedures for measuring and reporting whether goals have been achieved.

You may already be doing some of these things— see our list below for potential additions to your maintenance plan. Be sure to consult with qualified equipment specialists for details on proper maintenance and system operation.

Energy Tracking with ENERGY STAR® Portfolio Manager®



You've heard it before - you can't manage what you don't measure. ENERGY STAR® Portfolio Manager® is an online tool that you can use to measure and track energy and water consumption, as well as greenhouse gas emissions⁵. Your account has already been established. Now you can continue to keep tabs on your energy performance every month.

Thermostat Schedules and Temperature Resets



Use thermostat setback temperatures and schedules to reduce heating and cooling energy use during periods of low or no occupancy. Thermostats should be programmed for a setback of 5°F-10°F during low occupancy hours (reduce heating setpoints and increase cooling setpoints). Cooling load can be reduced by increasing the facility's occupied setpoint temperature. In general, during the cooling season, thermostats should be set as high as possible without sacrificing occupant comfort.

AC System Evaporator/Condenser Coil Cleaning

Dirty evaporator and condenser coils restrict air flow and restrict heat transfer. This increases the loads on the evaporator and condenser fan and decreases overall cooling system performance. Keeping the coils clean allows the fans and cooling system to operate more efficiently.

⁵ <https://www.energystar.gov/buildings/facility-owners-and-managers/existing-buildings/use-portfolio-manager>.

Furnace Maintenance

Preventative maintenance can extend the life of the system, maintain energy efficiency, and ensure safe operation. Following the manufacturer's instructions, a yearly tune-up should: check for gas / carbon monoxide leaks; change the air and fuel filters; check components for cracks, corrosion, dirt, or debris build-up; ensure the ignition system is working properly; test and adjust operation and safety controls; inspect electrical connections; and lubricate motors and bearings.

Optimize HVAC Equipment Schedules

Energy Management Systems (EMS) typically provide advanced controls for building HVAC systems, including chillers, boilers, air handling units, rooftop units and exhaust fans. The EMS monitors and reports operational status, schedules equipment 'start' and 'stop' times, locks out equipment operation based on outside air or space temperature, and often optimizes damper and valve operation based on complex algorithms. These EMS features, when in proper adjustment, can improve comfort for building occupants and save substantial energy.

Know your EMS scheduling capabilities. Regularly monitor HVAC equipment operating schedules and match them to building operating hours in order to eliminate unnecessary equipment operation and save energy. Monitoring should be performed often at sites with frequently changing usage patterns – daily in some cases. We recommend using the 'Optimal Start' feature of the EMS, if available, to optimize the building warmup sequence. Most EMS scheduling programs provide for "Holiday" schedules which can be used during reduced use or shutdown periods. Finally, many systems are equipped with a one-time override function which can be used to provide additional space conditioning due to a one-time, special event. When available this override feature should be used rather than changing the base operating schedule.

Water Heater Maintenance

The lower the supply water temperature that is used for hand washing sinks, the less energy is needed to heat the water. Reducing the temperature results in energy savings and the change is often unnoticeable to users. Be sure to review the domestic water temperature requirements for sterilizers and dishwashers as you investigate reducing the supply water temperature.

Also, preventative maintenance can extend the life of the system, maintain energy efficiency, and ensure safe operation. At least once a year, follow manufacturer instructions to drain a few gallons out of the water heater using the drain valve. If there is a lot of sediment or debris, then a full flush is recommended. Turn the temperature down and then completely drain the tank. Annual checks should include checks for:

- Leaks or heavy corrosion on the pipes and valves.
- Corrosion or wear on the gas line and on the piping. If you noticed any black residue, soot, or charred metal, this is a sign you may be having combustion issues and you should have the unit serviced by a professional.
- For electric water heaters, look for signs of leaking such as rust streaks or residue around the upper and lower panels covering the electrical components on the tank.
- For water heaters more than three years old, have a technician inspect the sacrificial anode annually.

Water Conservation



Installing dual flush or low-flow toilets and low-flow/waterless urinals are ways to reduce water use. The EPA WaterSense® ratings for urinals is 0.5 gallons per flush (gpf) and for flush valve toilets is 1.28 gpf (this is lower than the current 1.6 gpf federal standard).

For more information regarding water conservation go to the EPA's WaterSense® website⁶ or download a copy of EPA's "WaterSense® at Work: Best Management Practices for Commercial and Institutional Facilities"⁷ to get ideas for creating a water management plan and best practices for a wide range of water using systems.

Water conservation devices that do not reduce hot water consumption will not provide energy savings at the site level, but they may significantly affect your water and sewer usage costs. Any reduction in water use does however ultimately reduce grid-level electricity use since a significant amount of electricity is used to deliver water from reservoirs to end users.

If the facility has detached buildings with a master water meter for the entire campus, check for unnatural wet areas in the lawn or water seeping in the foundation at water pipe penetrations through the foundation. Periodically check overnight meter readings when the facility is unoccupied, and there is no other scheduled water usage.

Manage irrigation systems to use water more effectively outside the building. Adjust spray patterns so that water lands on intended lawns and plantings and not on pavement and walls. Consider installing an evapotranspiration irrigation controller that will prevent over-watering.

Procurement Strategies

Purchasing efficient products reduces energy costs without compromising quality. Consider modifying your procurement policies and language to require ENERGY STAR® or WaterSense® products where available.

⁶ <https://www.epa.gov/watersense>.

⁷ <https://www.epa.gov/watersense/watersense-work-0>.

6 ON-SITE GENERATION

You don't have to look far in New Jersey to see one of the thousands of solar electric systems providing clean power to homes, businesses, schools, and government buildings. On-site generation includes both renewable (e.g., solar, wind) and non-renewable (e.g., fuel cells) technologies that generate power to meet all or a portion of the facility's electric energy needs. Also referred to as distributed generation, these systems contribute to greenhouse gas (GHG) emission reductions, demand reductions and reduced customer electricity purchases, which results in improved electric grid reliability through better use of transmission and distribution systems.

Preliminary screenings were performed to determine if an on-site generation measure could be a cost-effective solution for your facility. Before deciding to install an on-site generation system, we recommend conducting a feasibility study to analyze existing energy profiles, siting, interconnection, and the costs associated with the generation project including interconnection costs, departing load charges, and any additional special facilities charges.

6.1 Solar Photovoltaic

Photovoltaic (PV) panels convert sunlight into electricity. Individual panels are combined into an array that produces direct current (DC) electricity. The DC current is converted to alternating current (AC) through an inverter. The inverter is then connected to the building's electrical distribution system.

A preliminary screening based on the facility's electric demand, size and location of free area, and shading elements shows that the facility has no potential for installing a PV array.

This facility does not appear to meet the minimum criteria for a cost-effective solar PV installation. To be cost-effective, a solar PV array needs certain minimum criteria, such as sufficient and sustained electric demand and sufficient flat or south-facing rooftop or other unshaded space on which to place the PV panels.

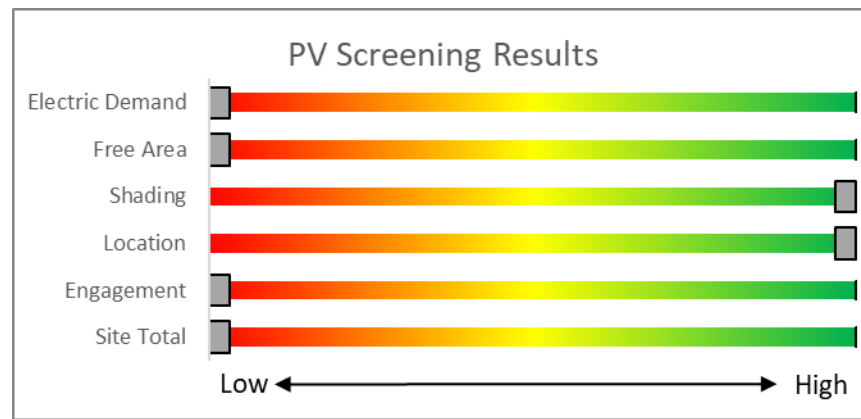


Figure 9 - Photovoltaic Screening

Transition Incentive (TI) Program

The TI program is a bridge between the Legacy SREC Program and a to-be determined Successor Incentive Program. The program is used to register the intent to install solar projects in New Jersey. Rebates are not available for solar projects, but owners of solar projects *must* register their projects prior to the start of construction to establish the project's eligibility to earn TRECs (Transition Incentive Renewable Energy Certificates). The Transition Incentive is structured as a factorized renewable energy certificate. The factors allow the TI Program to provide differentiated financial incentives for different types of solar installation.

Get more information about solar power in New Jersey or find a qualified solar installer who can help you decide if solar is right for your building:

Transition Incentive (TI) Program: <https://www.njcleanenergy.com/renewable-energy/programs/transition-incentive-program>

- **Basic Info on Solar PV in NJ:** www.njcleanenergy.com/whysolar.
- **NJ Solar Market FAQs:** www.njcleanenergy.com/renewable-energy/program-updates-and-background-information/solar-transition/solar-market-faqs.
- **Approved Solar Installers in the NJ Market:** www.njcleanenergy.com/commercial-industrial/programs/nj-smartstart-buildings/tools-and-resources/tradeally/approved_vendorsearch/?id=60&start=1.

6.2 Combined Heat and Power

Combined heat and power (CHP) generates electricity at the facility and puts waste heat energy to good use. Common types of CHP systems are reciprocating engines, microturbines, fuel cells, backpressure steam turbines, and (at large facilities) gas turbines.

CHP systems typically produce a portion of the electric power used on-site, with the balance of electric power needs supplied by the local utility company. The heat is used to supplement (or replace) existing boilers and provide space heating and/or domestic hot water heating. Waste heat can also be routed through absorption chillers for space cooling.

The key criteria used for screening is the amount of time that the CHP system would operate at full load and the facility's ability to use the recovered heat. Facilities with a continuous need for large quantities of waste heat are the best candidates for CHP.

A preliminary screening based on heating and electrical demand, siting, and interconnection shows that the facility has no potential for installing a cost-effective CHP system.

Based on a preliminary analysis, the facility does not appear to meet the minimum requirements for a cost-effective CHP installation. Low or infrequent thermal load, and lack of space for siting the equipment are the most significant factors contributing to the lack of CHP potential.

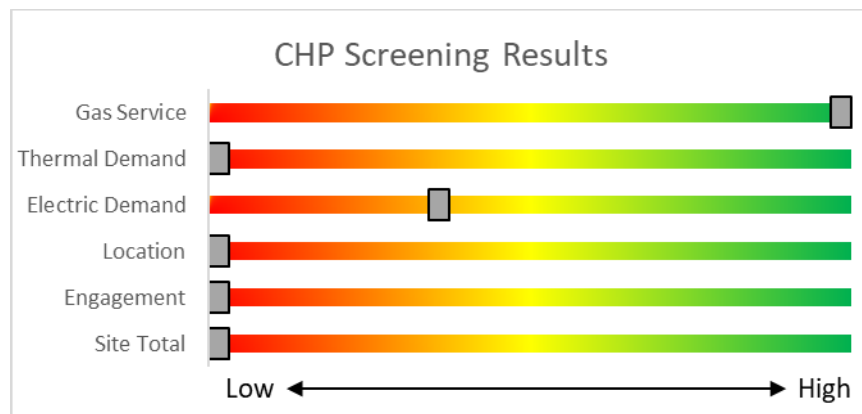


Figure 10 - Combined Heat and Power Screening

Find a qualified firm that specializes in commercial CHP cost assessment and installation:
http://www.njcleanenergy.com/commercial-industrial/programs/nj-smartstart-buildings/tools-and-resources/tradeally/approved_vendorsearch/.

7 PROJECT FUNDING AND INCENTIVES

Ready to improve your building's performance? New Jersey's Clean Energy Programs can help. Pick the program that works best for you. Incentive programs that may apply to this facility are identified in the Executive Summary. This section provides an overview of currently available New Jersey Clean Energy Programs.

	SmartStart <i>Flexibility to install at your own pace</i>	Direct Install <i>Turnkey installation</i>	Pay for Performance <i>Whole building upgrades</i>
Who should use it?	Buildings installing individual measures or small group of measures.	Small to mid-size facilities that can bundle multiple measures together. Average peak demand should be below 200 kW. Not suitable for significant building shell issues.	Mid to large size facilities looking to implement as many measures as possible at one time. Peak demand should be over 200 kW.
How does it work?	Use in-house staff or your preferred contractor.	Pre-approved contractors pass savings along to you via reduced material and labor costs.	Whole-building approach to energy upgrades designed to reduce energy use by at least 15%. The more you save, the higher the incentives.
What are the Incentives?	Fixed incentives for specific energy efficiency measures.	Incentives pay up to 70% of eligible costs, up to \$125,000 per project. You pay the remaining 30% directly to the contractor.	Up to 25% of installation cost, calculated based on level of energy savings per square foot.
How do I participate?	Submit an application for the specific equipment to be installed.	Contact a participating contractor in your region.	Contact a pre-qualified Partner to develop your Energy Reduction Plan and set your energy savings targets.
Take the next step by visiting www.njcleanenergy.com for program details, applications, and to contact a qualified contractor.			

7.1 SmartStart



SmartStart offers incentives for installing prescriptive and custom energy efficiency measures at your facility. This program provides an effective mechanism for securing incentives for energy efficiency measures installed individually or as part of a package of energy upgrades. This program serves most common equipment types and sizes.

SmartStart routinely adds, removes, or modifies incentives from year-to-year for various energy-efficient equipment based on market trends and new technologies.

Equipment with Prescriptive Incentives Currently Available:

Electric Chillers
Electric Unitary HVAC
Gas Cooling
Gas Heating
Gas Water Heating
Ground Source Heat Pumps
Lighting

Lighting Controls
Refrigeration Doors
Refrigeration Controls
Refrigerator/Freezer Motors
Food Service Equipment
Variable Frequency Drives

Incentives

The SmartStart Prescriptive program provides fixed incentives for specific energy efficiency measures. Prescriptive incentives vary by equipment type.

SmartStart Custom provides incentives for more unique or specialized technologies or systems that are not addressed through prescriptive incentives. Custom incentives are calculated at \$0.16/kWh and \$1.60/therm based on estimated annual savings. Incentives are capped at 50% of the total installed incremental project cost, or a project cost buy down to a one-year payback (whichever is less). Program incentives are capped at \$500,000 per electric account and \$500,000 per natural gas account, per fiscal year.

How to Participate

Submit an application for the specific equipment to be installed. Many applications are designed as rebates, although others require application approval prior to installation. You can work with your preferred contractor or use internal staff to install measures.

Visit www.njcleanenergy.com/SSB for a detailed program description, instructions for applying, and applications.

7.2 Direct Install



Direct Install is a turnkey program available to existing small to medium-sized facilities with an average peak electric demand that does not exceed 200 kW over the recent 12-month period. You work directly with a pre-approved contractor who will perform a free energy assessment at your facility, identify specific eligible measures, and provide a clear scope of work for

installation of selected measures. Energy efficiency measures may include lighting and lighting controls, refrigeration, HVAC, motors, variable speed drives, and controls.

Incentives

The program pays up to 70% of the total installed cost of eligible measures, up to \$125,000 per project. Each entity is limited to incentives up to \$250,000 per fiscal year.

How to Participate

To participate in Direct Install, you will need to contact the participating contractor assigned to the region of the state where your facility is located. A complete list of Direct Install program partners is provided on the Direct Install website linked below. The contractor will be paid the measure incentives directly by the program, which will pass on to you in the form of reduced material and implementation costs. This means up to 70% of eligible costs are covered by the program, subject to program caps and eligibility, while the remaining 30% of the cost is paid to the contractor by the customer.

Detailed program descriptions and applications can be found at: www.njcleanenergy.com/DI.

7.3 Pay for Performance - Existing Buildings



Pay for Performance works for larger customers with a peak demand over 200 kW. The minimum installed scope of work must include at least two unique measures that results in at least 15% source energy savings, and lighting cannot make up the majority of the savings.

P4P is a generally a good option for medium-to-large sized facilities looking to implement as many measures as possible under a single project to achieve deep energy savings. This program has an added benefit of addressing measures that may not qualify for other programs. Many facilities pursuing an Energy Savings Improvement Program loan also use this program.

Based on the site building and utility data provided, the facility does not meet the requirements of the current P4P program.

Incentives

Incentives are based on estimated and achieved energy savings ranging from \$0.18-\$0.22/kWh and \$1.80-\$2.50/therm, capped at the lesser of 50% total project cost, or \$1 million per electric account and \$1 million per natural gas account, per fiscal year, not to exceed \$2 million per project. An incentive of \$0.15/square foot is also available to offset the cost of developing the Energy Reduction Plan (see below) contingent on the project moving forward with measure installation.

How to Participate

Contact one of the pre-approved consultants and contractors ("Partners"). Under direct contract to you, they will help further evaluate the measures identified in this report through development of the energy reduction plan), assist you in implementing selected measures, and verify actual savings one year after the installation. Your Partner will also help you apply for incentives.

Approval of the final scope of work is required by the program prior to installation. Installation can be done by the contractor of your choice (some P4P Partners are also contractors) or by internal staff, but the Partner remains involved throughout construction to ensure compliance with the program requirements.

Detailed program descriptions, instructions for applying, applications and list of Partners can be found at: www.njcleanenergy.com/P4P.

7.4 Combined Heat and Power

The Combined Heat & Power (CHP) program provides incentives for eligible CHP or waste heat to power (WHP) projects. Eligible CHP or WHP projects must achieve an annual system efficiency of at least 65% (lower heating value, or LHV), based on total energy input and total utilized energy output. Mechanical energy may be included in the efficiency evaluation.

Incentives

Eligible Technologies	Size (Installed Rated Capacity) ¹	Incentive (\$/kW)	% of Total Cost Cap per Project ³	\$ Cap per Project ³		
Powered by non-renewable or renewable fuel source ⁴	≤500 kW	\$2,000	30-40% ²	\$2 million		
Gas Internal Combustion Engine	>500 kW - 1 MW	\$1,000				
Gas Combustion Turbine	> 1 MW - 3 MW	\$550	30%	\$3 million		
Microturbine	>3 MW					
Fuel Cells with Heat Recovery						
Waste Heat to Power*	<1 MW	\$1,000	30%	\$2 million		
	> 1MW	\$500		\$3 million		

*Waste Heat to Power: Powered by non-renewable fuel source, heat recovery or other mechanical recovery from existing equipment utilizing new electric generation equipment (e.g. steam turbine).

Check the NJCEP website for details on program availability, current incentive levels, and requirements.

How to Participate

You work with a qualified developer or consulting firm to complete the CHP application. Once the application is approved the project can be installed. Information about the CHP program can be found at: www.njcleanenergy.com/CHP.

7.5 Energy Savings Improvement Program

The Energy Savings Improvement Program (ESIP) serves New Jersey's government agencies by financing energy projects. An ESIP is a type of performance contract, whereby school districts, counties, municipalities, housing authorities and other public and state entities enter into contracts to help finance building energy upgrades. Annual payments are lower than the savings projected from the ECMs, ensuring that ESIP projects are cash flow positive for the life of the contract.

ESIP provides government agencies in New Jersey with a flexible tool to improve and reduce energy usage with minimal expenditure of new financial resources. NJCEP incentive programs described above can also be used to help further reduce the total project cost of eligible measures.

How to Participate

This LGEA report is the first step to participating in ESIP. Next, you will need to select an approach for implementing the desired ECMs:

- (1) Use an energy services company or "ESCO."
- (2) Use independent engineers and other specialists, or your own qualified staff, to provide and manage the requirements of the program through bonds or lease obligations.
- (3) Use a hybrid approach of the two options described above where the ESCO is used for some services and independent engineers, or other specialists or qualified staff, are used to deliver other requirements of the program.

After adopting a resolution with a chosen implementation approach, the development of the energy savings plan (ESP) can begin. The ESP demonstrates that the total project costs of the ECMs are offset by the energy savings over the financing term, not to exceed 15 years. The verified savings will then be used to pay for the financing.

The ESIP approach may not be appropriate for all energy conservation and energy efficiency improvements. Carefully consider all alternatives to develop an approach that best meets your needs. A detailed program description and application can be found at: www.njcleanenergy.com/ESIP.

ESIP is a program delivered directly by the NJBPU and is not an NJCEP incentive program. As mentioned above, you can use NJCEP incentive programs to help further reduce costs when developing the energy savings plan. Refer to the ESIP guidelines at the link above for further information and guidance on next steps.

7.6 Transition Incentive (TI) Program

The TI program is a bridge between the Legacy SREC Program and a to-be determined Successor Incentive Program. The program is used to register the intent to install solar projects in New Jersey. Rebates are not available for solar projects, but owners of solar projects *must* register their projects prior to the start of construction to establish the project's eligibility to earn TRECs (Transition Incentive Renewable Energy Certificates). The Transition Incentive is structured as a factorized renewable energy certificate. The factors allow the TI Program to provide differentiated financial incentives for different types of solar installations. NJBPU calculates the value of a Transition Renewable Energy Certificate (TREC) by multiplying the base compensation rate (\$152/MWh) by the project's assigned factor (i.e. $\$152 \times 0.85 = \$129.20/\text{MWh}$). The TREC factors are defined based on the chart below:

Project Type	Factor
Subsection (t): landfill, brownfield, areas of historic fill	1.00
Grid supply (Subsection (r)) rooftop	1.00
Net metered non-residential rooftop and carport	1.00
Community solar	0.85
Grid supply (Subsection (r)) ground mount	0.60
Net metered residential ground mount	0.60
Net metered residential rooftop and carport	0.60
Net metered non-residential ground mount	0.60

After the registration is accepted, construction is complete, and final paperwork has been submitted and is deemed complete, the project is issued a New Jersey certification number, which enables it to generate New Jersey TRECs.

Eligible projects may generate TRECs for 15 years following the commencement of commercial operations (also referred to as the "Transition Incentive Qualification Life"). After 15 years, projects may be eligible for a NJ Class I REC.

TRECs will be used by the identified compliance entities to satisfy a compliance obligation tied to a new Transition Incentive Renewable Portfolio Standard ("TI-RPS"), which will exist in parallel with, and completely separate from, the existing Solar RPS for Legacy SRECs. The TI-RPS is a carve-out of the current Class I RPS requirement. The creation of TRECs is based upon metered generation supplied to PJM-EIS General Attribute Tracking System ("GATS") by the owners of eligible facilities or their agents. GATS would create one TREC for each MWh of energy produced from a qualified facility.

TRECs will be purchased monthly by a TREC Administrator who will allocate the TRECs to the Load Serving Entities (BGS Providers and Third-Party Suppliers) annually based on their market share of retail electricity sold during the relevant Energy Year.

Solar projects help the State of New Jersey reach renewable energy goals outlined in the state's Energy Master Plan. The Transition Incentive Program online portal is now open to new applications effective May 1, 2020. There are instructions on "How and When to Transfer my SRP Registration to the Transition Incentive Program". If you are considering installing solar photovoltaics on your building, visit the following link for more information:

<https://www.njcleanenergy.com/renewable-energy/programs/transition-incentive-program>

8 ENERGY PURCHASING AND PROCUREMENT STRATEGIES

8.1 Retail Electric Supply Options

Energy deregulation in New Jersey has increased energy buyers' options by separating the function of electricity distribution from that of electricity supply. So, though you may choose a different company from which to buy your electric power, responsibility for your facility's interconnection to the grid and repair to local power distribution will still reside with the traditional utility company serving your region.

If your facility is not purchasing electricity from a third-party supplier, consider shopping for a reduced rate from third-party electric suppliers. If your facility already buys electricity from a third-party supplier, review and compare prices at the end of each contract year.

A list of licensed third-party electric suppliers is available at the NJBPU website⁸.

8.2 Retail Natural Gas Supply Options

The natural gas market in New Jersey is also deregulated. Most customers that remain with the utility for natural gas service pay rates that are market-based and that fluctuate monthly. The utility provides basic gas supply service (BGSS) to customers who choose not to buy from a third-party supplier for natural gas commodity.

A customer's decision about whether to buy natural gas from a retail supplier typically depends on whether a customer prefers budget certainty and/or longer-term rate stability. Customers can secure longer-term fixed prices by signing up for service through a third-party retail natural gas supplier. Many larger natural gas customers may seek the assistance of a professional consultant to assist in their procurement process.

If your facility does not already purchase natural gas from a third-party supplier, consider shopping for a reduced rate from third-party natural gas suppliers. If your facility already purchases natural gas from a third-party supplier, review and compare prices at the end of each contract year.

A list of licensed third-party natural gas suppliers is available at the NJBPU website⁹.

⁸ www.state.nj.us/bpu/commercial/shopping.html.

⁹ www.state.nj.us/bpu/commercial/shopping.html.

APPENDIX A: EQUIPMENT INVENTORY & RECOMMENDATIONS

Lighting Inventory & Recommendations

Existing Conditions							Proposed Conditions							Energy Impact & Financial Analysis							
Location	Fixture Quantity	Fixture Description	Control System	Light Level	Watts per Fixture	Annual Operating Hours	ECM #	Fixture Recommendation	Add Controls?	Fixture Quantity	Fixture Description	Control System	Watts per Fixture	Annual Operating Hours	Total Peak kW Savings	Total Annual kWh Savings	Total Annual MMBtu Savings	Total Annual Energy Cost Savings	Total Installation Cost	Total Incentives	Simple Payback w/ Incentives in Years
Attic	2	Linear Fluorescent - T8: 4' T8 (32W) - 2L	Wall Switch	S	62	250	1	Relamp	No	2	LED - Linear Tubes: (2) 4' Lamps	Wall Switch	29	250	0.1	17	0	\$3	\$73	\$40	11.8
Exterior	3	Incandescent: Par 38 - 2L	None		150	780	1	Relamp	No	3	LED Lamps: Par 38 - 2L	None	23	780	0.0	298	0	\$50	\$211	\$12	4.0
Exterior	1	LED - Fixtures: Canopy recessed	PhotoCell		10	4,380		None	No	1	LED - Fixtures: Canopy recessed	PhotoCell	10	4,380	0.0	0	0	\$0	\$0	\$0	0.0
Exterior	3	LED - Fixtures: Outdoor Wall-Mounted Area Fixture	PhotoCell		45	4,380		None	No	3	LED - Fixtures: Outdoor Wall-Mounted Area Fixture	PhotoCell	45	4,380	0.0	0	0	\$0	\$0	\$0	0.0
Main Lobby	1	Exit Signs: LED - 2 W Lamp	None		6	8,760		None	No	1	Exit Signs: LED - 2 W Lamp	None	6	8,760	0.0	0	0	\$0	\$0	\$0	0.0
Main Lobby	1	LED - Linear Tubes: (2) 4' Lamps	Wall Switch	S	29	2,000		None	No	1	LED - Linear Tubes: (2) 4' Lamps	Wall Switch	29	2,000	0.0	0	0	\$0	\$0	\$0	0.0
Parking lot	9	LED - Fixtures: Outdoor Pole/Arm-Mounted Area/Roadway Fixture	None		175	780		None	No	9	LED - Fixtures: Outdoor Pole/Arm-Mounted Area/Roadway Fixture	None	175	780	0.0	0	0	\$0	\$0	\$0	0.0
Receiving Room	1	Exit Signs: LED - 2 W Lamp	None		6	8,760		None	No	1	Exit Signs: LED - 2 W Lamp	None	6	8,760	0.0	0	0	\$0	\$0	\$0	0.0
Receiving Room	2	LED - Linear Tubes: (2) 2' Lamps	Wall Switch	S	17	2,000	2	None	Yes	2	LED - Linear Tubes: (2) 2' Lamps	Occupancy Sensor	17	1,380	0.0	22	0	\$4	\$116	\$0	32.5
Records Storage	1	Exit Signs: LED - 2 W Lamp	None		6	8,760		None	No	1	Exit Signs: LED - 2 W Lamp	None	6	8,760	0.0	0	0	\$0	\$0	\$0	0.0
Records Storage	3	LED - Linear Tubes: (2) 2' Lamps	Wall Switch	S	17	2,000	2	None	Yes	3	LED - Linear Tubes: (2) 2' Lamps	Occupancy Sensor	17	1,380	0.0	32	0	\$5	\$0	\$0	0.0
Records Storage	16	LED - Linear Tubes: (1) 4' Lamp	Wall Switch	S	20	2,000	2	None	Yes	16	LED - Linear Tubes: (1) 4' Lamp	Occupancy Sensor	20	1,380	0.1	202	0	\$34	\$810	\$0	24.1
Records Storage	4	LED - Linear Tubes: (2) 4' Lamps	Wall Switch	S	29	2,000	2	None	Yes	4	LED - Linear Tubes: (2) 4' Lamps	Occupancy Sensor	29	1,380	0.0	73	0	\$12	\$0	\$0	0.0
Restroom	1	Incandescent: Screw-in 1 lamp	Wall Switch	S	65	500	1	Relamp	No	1	LED Lamps: Screw-in 1 lamp	Wall Switch	10	500	0.0	28	0	\$5	\$17	\$2	3.3
Restroom	1	LED Lamps: Screw-in 1 lamp	Wall Switch	S	9	500		None	No	1	LED Lamps: Screw-in 1 lamp	Wall Switch	9	500	0.0	0	0	\$0	\$0	\$0	0.0
Shredding room	2	LED - Linear Tubes: (2) 2' Lamps	Wall Switch	S	17	780		None	No	2	LED - Linear Tubes: (2) 2' Lamps	Wall Switch	17	780	0.0	0	0	\$0	\$0	\$0	0.0

Motor Inventory & Recommendations

Existing Conditions									Proposed Conditions					Energy Impact & Financial Analysis						
Location	Area(s)/System(s) Served	Motor Quantity	Motor Application	HP Per Motor	Full Load Efficiency	VFD Control?	Remaining Useful Life	Annual Operating Hours	ECM #	Install High Efficiency Motors?	Full Load Efficiency	Install VFDs?	Number of VFDs	Total Peak kW Savings	Total Annual kWh Savings	Total Annual MMBtu Savings	Total Annual Energy Cost Savings	Total Installation Cost	Total Incentives	Simple Payback w/ Incentives in Years
Unknown	AHU 1 and AHU 2	2	Supply Fan	0.5	85.5%	No	W	2,340		No	85.5%	No		0.0	0	0	\$0	\$0	\$0	0.0

Electric HVAC Inventory & Recommendations

		Existing Conditions					Proposed Conditions								Energy Impact & Financial Analysis						
Location	Area(s)/System(s) Served	System Quantity	System Type	Cooling Capacity per Unit (Tons)	Heating Capacity per Unit (MBh)	Remaining Useful Life	ECM #	Install High Efficiency System?	System Quantity	System Type	Cooling Capacity per Unit (Tons)	Heating Capacity per Unit (MBh)	Cooling Mode Efficiency (SEER/EER)	Heating Mode Efficiency (COP)	Total Peak kW Savings	Total Annual kWh Savings	Total Annual MMBtu Savings	Total Annual Energy Cost Savings	Total Installation Cost	Total Incentives	Simple Payback w/ Incentives in Years
Exterior	CU-1, CU-2	2	Split-System AC	4.00		W		No							0.0	0	0	\$0	\$0	\$0	0.0

Fuel Heating Inventory & Recommendations

		Existing Conditions				Proposed Conditions							Energy Impact & Financial Analysis						
Location	Area(s)/System(s) Served	System Quantity	System Type	Output Capacity per Unit (MBh)	Remaining Useful Life	ECM #	Install High Efficiency System?	System Quantity	System Type	Output Capacity per Unit (MBh)	Heating Efficiency	Heating Efficiency Units	Total Peak kW Savings	Total Annual kWh Savings	Total Annual MMBtu Savings	Total Annual Energy Cost Savings	Total Installation Cost	Total Incentives	Simple Payback w/ Incentives in Years
Unknown	Records center	1	Furnace	80	W		No						0.0	0	0	\$0	\$0	\$0	0.0

DHW Inventory & Recommendations


		Existing Conditions			Proposed Conditions							Energy Impact & Financial Analysis						
Location	Area(s)/System(s) Served	System Quantity	System Type	Remaining Useful Life	ECM #	Replace?	System Quantity	System Type	Fuel Type	System Efficiency	Efficiency Units	Total Peak kW Savings	Total Annual kWh Savings	Total Annual MMBtu Savings	Total Annual Energy Cost Savings	Total Installation Cost	Total Incentives	Simple Payback w/ Incentives in Years
Unknoen	Restrooms	1	Tankless Water Heater	W		No						0.0	0	0	\$0	\$0	\$0	0.0

Plug Load Inventory


		Existing Conditions		
Location	Quantity	Equipment Description	Energy Rate (W)	ENERGY STAR Qualified ?
Records center	1	Microwave	900	Yes

APPENDIX B: ENERGY STAR® STATEMENT OF ENERGY PERFORMANCE

EUI is presented in terms of *site energy* and *source energy*. Site energy is the amount of fuel and electricity consumed by a building as reflected in utility bills. Source energy includes fuel consumed to generate electricity consumed at the site, factoring in electric production and distribution losses for the region.



ENERGY STAR® Statement of Energy Performance



**ENERGY STAR®
Score¹**

**J. Mark Mutter Records Center
(Toms River Township)**

Primary Property Type: Self-Storage Facility
Gross Floor Area (ft²): 4,000
Built: 2015

For Year Ending: June 30, 2019
Date Generated: July 14, 2020

1. The ENERGY STAR score is a 1-100 assessment of a building's energy efficiency as compared with similar buildings nationwide, adjusting for climate and business activity.

Property & Contact Information			
Property Address J. Mark Mutter Records Center (Toms River Township) 1717 Church Road Toms River, New Jersey 08753	Property Owner Township of Toms River 33 Washington Street Toms River, NJ 08753 (742) 341-1000	Primary Contact Donald Guardian 33 Washington Street Toms River, NJ 08753 (742) 341-1000 dguardian@tomsrivertownship.com	
Property ID: 10864939			

Energy Consumption and Energy Use Intensity (EUI)			
Site EUI	Annual Energy by Fuel	National Median Comparison	
37.8 kBtu/ft²	Electric - Grid (kBtu) 26,182 (17%)	National Median Site EUI (kBtu/ft²)	35.4
	Natural Gas (kBtu) 124,981 (83%)	National Median Source EUI (kBtu/ft²)	47.8
		% Diff from National Median Source EUI	7%
Source EUI		Annual Emissions	
51.1 kBtu/ft²		Greenhouse Gas Emissions (Metric Tons CO2e/year)	9

Signature & Stamp of Verifying Professional

I _____ (Name) verify that the above information is true and correct to the best of my knowledge.

LP Signature: _____ Date: _____

Licensed Professional

() _____



Professional Engineer or Registered
Architect Stamp
(if applicable)

APPENDIX C: GLOSSARY

TERM	DEFINITION
Blended Rate	Used to calculate fiscal savings associated with measures. The blended rate is calculated by dividing the amount of your bill by the total energy use. For example, if your bill is \$22,217.22, and you used 266,400 kilowatt-hours, your blended rate is 8.3 cents per kilowatt-hour.
Btu	<i>British thermal unit</i> : a unit of energy equal to the amount of heat required to increase the temperature of one pound of water by one-degree Fahrenheit.
CHP	<i>Combined heat and power</i> . Also referred to as cogeneration.
COP	<i>Coefficient of performance</i> : a measure of efficiency in terms of useful energy delivered divided by total energy input.
Demand Response	Demand response reduces or shifts electricity usage at or among participating buildings/sites during peak energy use periods in response to time-based rates or other forms of financial incentives.
DCV	<i>Demand control ventilation</i> : a control strategy to limit the amount of outside air introduced to the conditioned space based on actual occupancy need.
US DOE	<i>United States Department of Energy</i>
EC Motor	<i>Electronically commutated motor</i>
ECM	<i>Energy conservation measure</i>
EER	<i>Energy efficiency ratio</i> : a measure of efficiency in terms of cooling energy provided divided by electric input.
EUI	<i>Energy Use Intensity</i> : measures energy consumption per square foot and is a standard metric for comparing buildings' energy performance.
Energy Efficiency	Reducing the amount of energy necessary to provide comfort and service to a building/area. Achieved through the installation of new equipment and/or optimizing the operation of energy use systems. Unlike conservation, which involves some reduction of service, energy efficiency provides energy reductions without sacrifice of service.
ENERGY STAR®	ENERGY STAR® is the government-backed symbol for energy efficiency. The ENERGY STAR® program is managed by the EPA.
EPA	<i>United States Environmental Protection Agency</i>
Generation	The process of generating electric power from sources of primary energy (e.g., natural gas, the sun, oil).
GHG	<i>Greenhouse gas</i> gases that are transparent to solar (short-wave) radiation but opaque to long-wave (infrared) radiation, thus preventing long-wave radiant energy from leaving Earth's atmosphere. The net effect is a trapping of absorbed radiation and a tendency to warm the planet's surface.
gpf	<i>Gallons per flush</i>

gpm	<i>Gallon per minute</i>
HID	<i>High intensity discharge:</i> high-output lighting lamps such as high-pressure sodium, metal halide, and mercury vapor.
hp	<i>Horsepower</i>
HPS	<i>High-pressure sodium:</i> a type of HID lamp
HSPF	<i>Heating seasonal performance factor:</i> a measure of efficiency typically applied to heat pumps. Heating energy provided divided by seasonal energy input.
HVAC	<i>Heating, ventilating, and air conditioning</i>
IHP 2014	US DOE Integral Horsepower rule. The current ruling regarding required electric motor efficiency.
IPLV	<i>Integrated part load value:</i> a measure of the part load efficiency usually applied to chillers.
kBtu	One thousand British thermal units
kW	<i>Kilowatt:</i> equal to 1,000 Watts.
kWh	<i>Kilowatt-hour:</i> 1,000 Watts of power expended over one hour.
LED	<i>Light emitting diode:</i> a high-efficiency source of light with a long lamp life.
LGEA	<i>Local Government Energy Audit</i>
Load	The total power a building or system is using at any given time.
Measure	A single activity, or installation of a single type of equipment, that is implemented in a building system to reduce total energy consumption.
MH	<i>Metal halide:</i> a type of HID lamp
MBh	<i>Thousand Btu per hour</i>
MBtu	<i>One thousand British thermal units</i>
MMBtu	<i>One million British thermal units</i>
MV	<i>Mercury Vapor:</i> a type of HID lamp
NJBPU	<i>New Jersey Board of Public Utilities</i>
NJCEP	<i>New Jersey's Clean Energy Program:</i> NJCEP is a statewide program that offers financial incentives, programs and services for New Jersey residents, business owners and local governments to help them save energy, money and the environment.
psig	<i>Pounds per square inch gauge</i>
Plug Load	Refers to the amount of power used in a space by products that are powered by means of an ordinary AC plug.
PV	<i>Photovoltaic:</i> refers to an electronic device capable of converting incident light directly into electricity (direct current).

SEER	<i>Seasonal energy efficiency ratio:</i> a measure of efficiency in terms of annual cooling energy provided divided by total electric input.
SEP	<i>Statement of energy performance:</i> a summary document from the ENERGY STAR® Portfolio Manager®.
Simple Payback	The amount of time needed to recoup the funds expended in an investment or to reach the break-even point between investment and savings.
SREC	<i>Solar renewable energy credit:</i> a credit you can earn from the state for energy produced from a photovoltaic array.
TREC	<i>Transition Incentive Renewable Energy Certificate:</i> a factorized renewable energy certificate you can earn from the state for energy produced from a photovoltaic array.
T5, T8, T12	A reference to a linear lamp diameter. The number represents increments of 1/8 th of an inch.
Temperature Setpoint	The temperature at which a temperature regulating device (thermostat, for example) has been set.
therm	100,000 Btu. Typically used as a measure of natural gas consumption.
tons	A unit of cooling capacity equal to 12,000 Btu/hr.
Turnkey	Provision of a complete product or service that is ready for immediate use
VAV	<i>Variable air volume</i>
VFD	<i>Variable frequency drive:</i> a controller used to vary the speed of an electric motor.
WaterSense®	The symbol for water efficiency. The WaterSense® program is managed by the EPA.
Watt (W)	Unit of power commonly used to measure electricity use.