



Initiation of a Proceeding to Investigate Approaches to Mitigate Solar Development Volatility pursuant to N.J.S.A. 48:3-87(d)(3)(a)

**Prepared by Charlie Garrison
October 9, 2013
Renewable Energy Meeting
Trenton, NJ**



New Jersey Solar Installations by Year As of 08/31/13

	Original Capacity Report Values			Restated Capacity Report Values		
Year	# Projects	Total kW	Total Rebate \$	# Projects	Total kW	KW Change
2001	3	7.5	\$ 37,145	3	7.5	
2002	37	623.5	\$ 2,424,694	37	623.5	
2003	95	1,176.6	\$ 5,323,411	95	1,176.6	
2004	289	2,037.1	\$ 10,581,975	289	2,037.1	
2005	729	9,908.1	\$ 46,235,897	729	9,908.1	
2006	867	18,320.4	\$ 78,086,786	867	18,320.4	
2007	693	15,258.3	\$ 58,122,386	693	15,258.3	
2008	833	22,711.3	\$ 44,923,416	833	22,711.3	
2009	1,349	57,254.3	\$ 56,026,262	1,349	57,254.3	
2010	3,131	132,383.4	\$ 45,961,190	3,131	132,383.4	
2011	5,396	305,204.0	\$ 13,383,747	5,396	305,204.0	
2012	5,901	390,773.2	\$ 2,389,758	5,903	417,415.0	26,641.8
2013	4,148	158,624.6	\$ 4,691	4,147	151,965.6	(6,659.1)
Total	23,471	1,114,282.3	\$ 363,501,358	23,472	1,134,265.0	19,982.7

Note: Restated values reflect a change to the "installed date" for Tinton Falls and KEPS Landholdings to match the EDC Authorization to operate dates.



NJ Solar Installations by Month 9/2012 through 9/2013

Year	Month	# Projects	Monthly kW	Cumulative Total kW
Cumulative Installed capacity as of 8/31/13 =				875,989.7
2012	9	486	24,947.3	900,937.1
2012	10	401	23,933.4	924,870.4
2012	11	328	45,013.7	969,884.1
2012	12	507	12,415.3	982,299.4
2013	1	592	17,543.1	999,842.5
2013	2	424	34,693.0	1,034,535.5
2013	3	546	18,307.1	1,052,842.6
2013	4	599	23,047.8	1,075,890.4
2013	5	528	22,624.8	1,098,515.2
2013	6	556	15,748.1	1,114,263.3
2013	7	507	11,555.9	1,125,819.2
2013	8	395	8,445.8	1,134,265.0
2013	9	439	8,063.4	1,142,328.4



Solar Installed Capacity Data

- The installed solar capacity as of 9/30/13 is approximately 1,142.3 MW.
 - Approximately 8.0 MW installed in current month.
- The preliminary solar capacity project pipeline as of 9/30/13 is approximately 354.4 MW.
 - The project pipeline decreased approximately 3 MW in the current month.



NJCEP Solar Installed Projects Plus Pipeline Projects

Preliminary Values As of 9/30/13

Installed Solar Projects

Interconnection Type	Project Qty	Total Capacity (KW DC)	Percent of Capacity	Avg System Size (kW DC)
Behind the meter	23,804	915,644.0	80.2%	38.5
Direct Grid Supply	107	226,684.4	19.8%	2,118.5
Installed Totals	23,911	1,142,328.4	100.0%	47.8

Solar Project Pipeline

Interconnection Type	Project Qty	Total Capacity (KW DC)	Percent of Capacity	Avg System Size (kW DC)
Behind the meter	4,693	158,029.8	44.6%	33.7
Direct Grid Supply	32	196,356.1	55.4%	6,136.1
Pipeline Totals	4,725	354,385.9	100.0%	75.0

Totals For All Projects	28,636	1,496,714.3		52.3
--------------------------------	---------------	--------------------	--	-------------



NJCEP Solar Pipeline Plus Installed Projects History

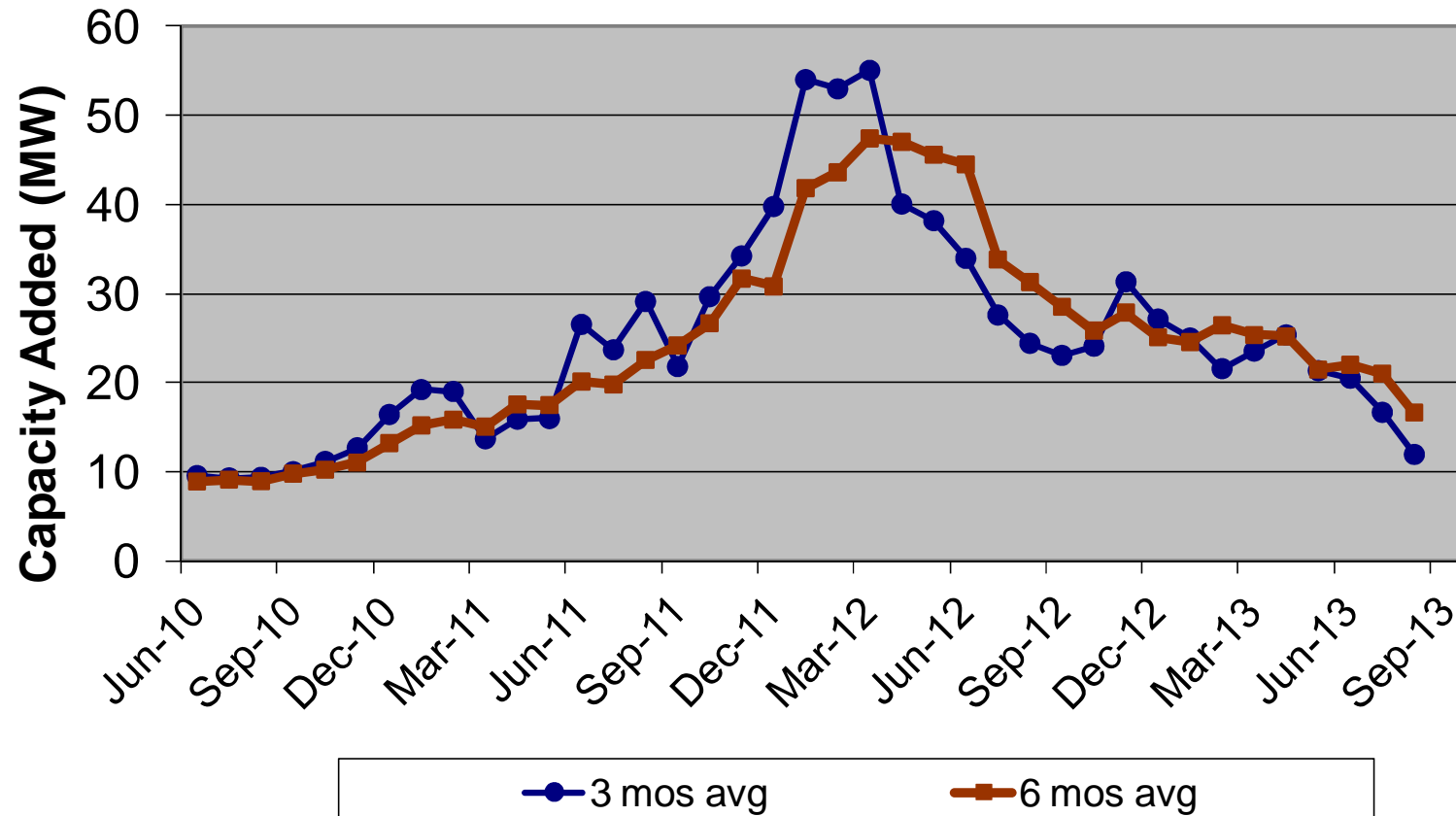
NJCEP Solar Pipeline Plus Installed Projects History as of 9/30/13			
As Of	MW Installed	MW Pipeline	Combined MW
5/31/2012	802.8	560.7	1,363.5
6/30/2012	831.8	590.3	1,422.1
7/31/2012	852.7	756.2	1,608.9
8/31/2012	876.0	806.9	1,682.9
9/30/2012	900.9	739.9	1,640.8
10/31/2012	924.9	732.0	1,656.9
11/30/2012	969.9	723.5	1,693.4
12/31/2012	982.3	717.6	1,699.9
1/31/2013	999.8	704.9	1,704.7
2/28/2013	1,034.5	675.4	1,709.9
3/31/2013	1,052.8	675.5	1,728.3
4/30/2013	1,075.9	660.2	1,736.1
5/31/2013	1,098.5	656.9	1,755.4
6/30/2013	1,114.3	562.5	1,676.8
7/31/2013	1,125.8	516.9	1,642.7
8/31/2013	1,134.3	357.1	1,491.4
9/30/2013	1,142.3	354.4	1,496.7

Preliminary values for 9/30/13



Solar Installed Capacity All Projects

3 & 6 Month Moving Average of Capacity Added



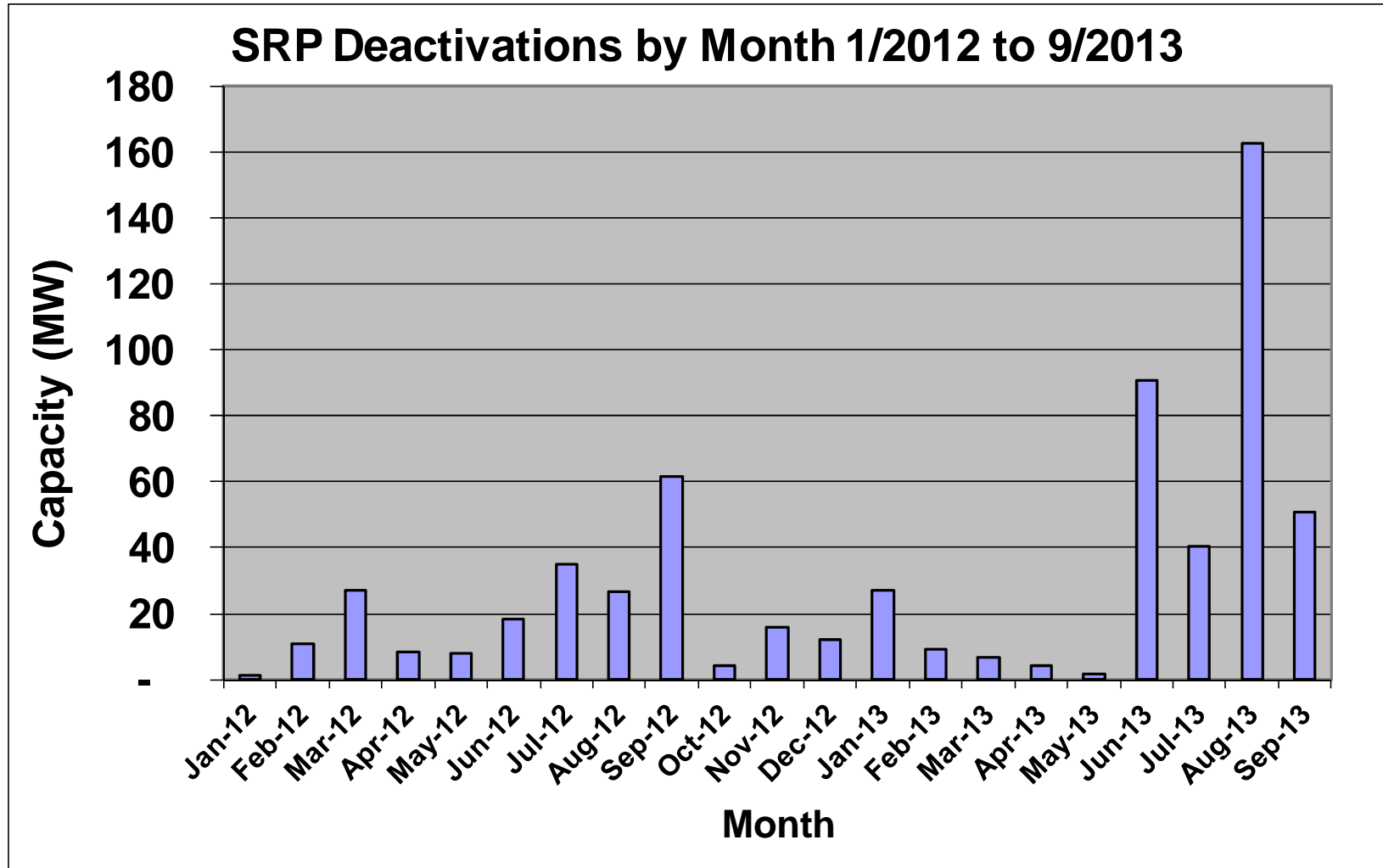


SRP Deactivations by Month

SRP Deactivations by Month as of 9/30/13		
Month End	Project Qty	Capacity (kW)
Jun-12	107	18,306
Jul-12	215	34,800
Aug-12	140	26,579
Sep-12	337	61,572
Oct-12	30	4,083
Nov-12	342	15,879
Dec-12	132	12,012
Jan-13	132	27,273
Feb-13	142	9,392
Mar-13	173	6,559
Apr-13	76	4,226
May-13	120	1,839
Jun-13	105	90,875
Jul-13	104	40,546
Aug-13	137	162,547
Sep-13	90	50,731



SRP Deactivations by Month





NJCEP Solar Generation Forecast

Retail sales estimate by Energy Year

- *Incorporate recently released final retail sales value for EY2013, 76.96 Million MWHs*

Seek additional input from stakeholder group on assumptions used in forecast:

- *Behind the meter run rate changes by year for new capacity added*
- *Direct grid supply project installations by EY*



NJCEP Solar Generation Forecast

RPS Requirement By Energy Year

Energy Yr	RPS Req	Status
2012	442,000	Actual
2013	596,000	Actual
2014	1,660,500	Estimated
2015	1,984,500	Estimated
2016	2,227,500	Estimated

Energy Yr	Retail Sales Est (MWh)	RPS %	Est RPS Req (MWh)
2014	81,000,000	2.05%	1,660,500
2015	81,000,000	2.45%	1,984,500
2016	81,000,000	2.75%	2,227,500

Note: The Retail Sales estimates shown above were used to estimate RPS MWh requirement for EY 2014-2016



NJCEP Solar Generation Forecast

NJCEP Solar Generation Forecast

Assumptions used in forecast of annual capacity added for each EY

EY	Est Capacity Added (kW/Yr)			BTM Monthly Run Rate (kW/Month)			Estimated Annual Grid Supply Capacity Added (kW/Yr)		
	Low	Med	High	Low	Med	High	Low	Med	High
EY2014	263,720	303,096	335,824	16,810	19,508	21,069	62,000	69,000	83,000
EY2015	273,720	318,096	370,048	16,810	19,508	22,754	72,000	84,000	97,000
EY2016	283,720	330,096	406,888	16,810	19,508	24,574	82,000	96,000	112,000

Capacity added each year = (12 months x BTM monthly run rate) + annual grid supply added

Low, Med, High Assumptions used in forecast of annual capacity added for each EY:

Low Based upon 4 year historical run rate for BTM installs plus annual additions from grid supply table above

Med Based upon 1 year historical run rate for BTM installs plus annual additions from grid supply table above

High Based upon 1 year historical run rate for BTM installs with 8% growth per year plus annual additions from grid supply table above

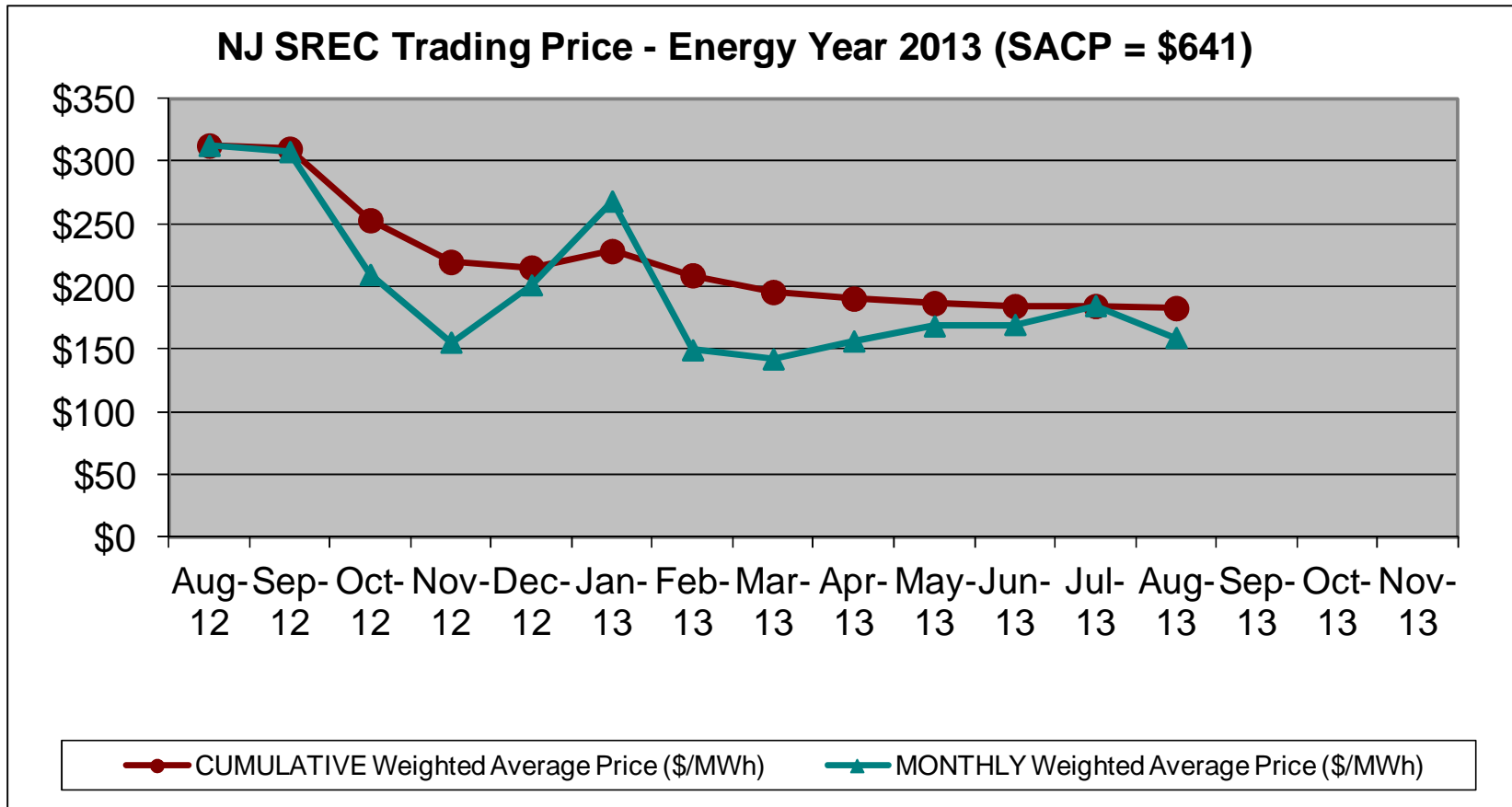


Current SREC Trading Statistics Energy Year 2013

EY 2013 SACP= \$641			SREC Quantity		Monthly		Cumulative	
Month	Year	Active kW DC	Issued in Month	Traded in Month	High (\$/MWh)	Low (\$/MWh)	# of SRECs Traded	Weighted Avg Price (\$/MWh)
Nov	2013							
Oct	2013							
Sept	2013							
Aug	2013	1,097,996	9,454	114,737	\$ 585	\$ 70	1,709,814	\$182.72
Jul	2013	1,084,054	19,714	553,447	\$ 610	\$ 50	1,595,077	\$184.41
Jun	2013	1,060,245	157,361	145,381	\$ 641	\$ 50	1,041,630	\$184.28
May	2013	1,028,510	137,672	150,287	\$ 613	\$ 50	896,249	\$186.66
Apr	2013	996,630	96,105	100,390	\$ 640	\$ 40	745,962	\$190.31
Mar	2013	977,117	61,194	128,898	\$ 641	\$ 68	645,572	\$195.57
Feb	2013	941,633	55,566	126,629	\$ 620	\$ 40	516,674	\$208.88
Jan	2013	930,580	47,642	96,603	\$ 641	\$ 40	390,045	\$228.20
Dec	2012	907,486	65,933	72,070	\$ 620	\$ 40	293,442	\$215.06
Nov	2012	895,930	60,244	75,602	\$ 658	\$ 60	221,372	\$219.56
Oct	2012	876,278	90,783	82,813	\$ 658	\$ 40	145,770	\$252.81
Sept	2012	860,170	106,498	34,124	\$ 650	\$ 50	62,957	\$309.77
Aug	2012	845,364	101,993	21,510	\$ 620	\$ 50	28,833	\$312.37
Jul	2012	823,954	95,855	7,323	Due to low trade volume, the July trades are reported with the pricing data for August.			
	Total		1,106,014	1,709,814				



Current SREC Trading Statistics Energy Year 2013





For More Information

Subscribe to the Renewable Energy Committee Notification list

<http://mail.njcleanenergy.com/mailman/listinfo/Renewables>

New Jersey Clean Energy Program Renewable Energy Reports

<http://www.njcleanenergy.com/renewable-energy/project-activity-reports/project-activity-reports>

<http://www.njcleanenergy.com/renewable-energy/project-activity-reports/program-status-reports/program-status-reports>

NJ SREC Trading Statistics for each Energy Year

<http://www.njcleanenergy.com/renewable-energy/project-activity-reports/srec-pricing/srec-pricing>