



Initiation of a Proceeding to Investigate Approaches to Mitigate Solar Development Volatility pursuant to N.J.S.A. 48:3-87(d)(3)(a)

**Prepared by Charlie Garrison
September 10, 2013
Renewable Energy Meeting
Trenton, NJ**



Solar Installed Capacity Data

- The installed solar capacity as of 8/31/13 is approximately 1,114 MW.
 - Approximately 8.4 MW installed in current month.
- The preliminary solar capacity project pipeline as of 8/31/13 is approximately 377 MW.
 - The project pipeline decreased approximately 159 MW in the current month.



NJCEP Solar Installed Projects Plus Pipeline Projects

Preliminary Values As of 8/31/13

Installed Solar Projects

Interconnection Type	Project Qty	Total Capacity (KW DC)	Percent of Capacity	Avg System Size (kW DC)
Behind the meter	23,367	908,809.8	81.6%	38.9
Direct Grid Supply	104	205,472.5	18.4%	1,975.7
Installed Totals	23,471	1,114,282.3	100.0%	47.5

Solar Project Pipeline

Interconnection Type	Project Qty	Total Capacity (KW DC)	Percent of Capacity	Avg System Size (kW DC)
Behind the meter	4,653	152,696.1	40.5%	32.8
Direct Grid Supply	29	224,398.2	59.5%	7,737.9
Pipeline Totals	4,682	377,094.2	100.0%	80.5

Totals For All Projects	28,153	1,491,376.5		53.0
--------------------------------	---------------	--------------------	--	-------------



NJCEP Solar Pipeline Plus Installed Projects History

NJCEP Solar Pipeline Plus Installed Projects History as of 8/31/13			
As Of	MW Installed	MW Pipeline	Combined MW
5/31/2012	802.8	560.7	1,363.5
6/30/2012	831.8	590.3	1,422.1
7/31/2012	852.7	756.2	1,608.9
8/31/2012	876.0	806.9	1,682.9
9/30/2012	900.8	740.0	1,640.8
10/31/2012	918.0	738.9	1,656.9
11/30/2012	943.1	750.3	1,693.4
12/31/2012	955.5	744.4	1,699.9
1/31/2013	973.1	731.6	1,704.7
2/28/2013	1,007.8	702.1	1,709.9
3/31/2013	1,026.1	702.2	1,728.3
4/30/2013	1,049.1	687.0	1,736.1
5/31/2013	1,078.4	677.0	1,755.4
6/30/2013	1,094.4	582.4	1,676.8
7/31/2013	1,105.9	536.8	1,642.7
8/31/2013	1,114.3	377.1	1,491.4

Preliminary values for 8/31/13



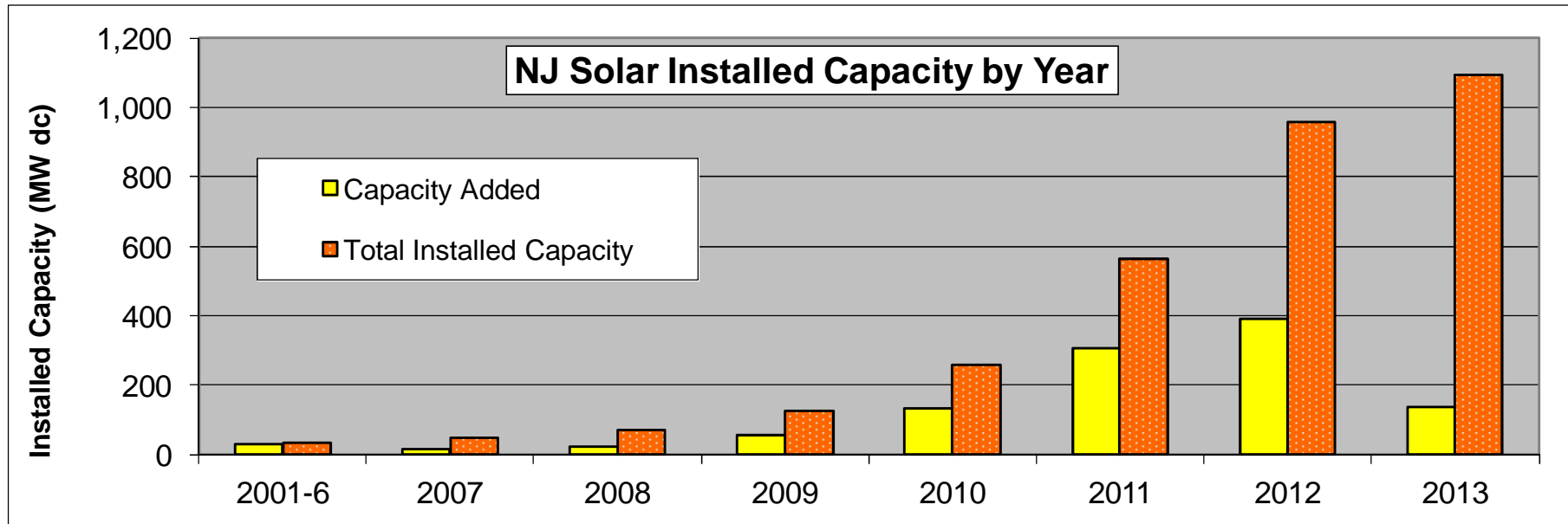
New Jersey Solar Installations by Year As of 08/31/13

Year	# Projects	Total kW	Total Rebate \$
2001	3	7.5	\$ 37,145
2002	37	623.5	\$ 2,424,694
2003	95	1,176.6	\$ 5,323,411
2004	289	2,037.1	\$ 10,581,975
2005	729	9,908.1	\$ 46,235,897
2006	867	18,320.4	\$ 78,086,786
2007	693	15,258.3	\$ 58,122,386
2008	833	22,711.3	\$ 44,923,416
2009	1,349	57,254.3	\$ 56,026,262
2010	3,131	132,383.4	\$ 45,961,190
2011	5,396	305,204.0	\$ 13,383,747
2012	5,901	390,773.2	\$ 2,389,758
2013	4,148	158,624.6	\$ 4,691
Total	23,471	1,114,282.3	\$ 363,501,358

Total* = Program to date totals for Paid projects plus projects pending payment; preliminary results subject to true-up based upon inspection results.



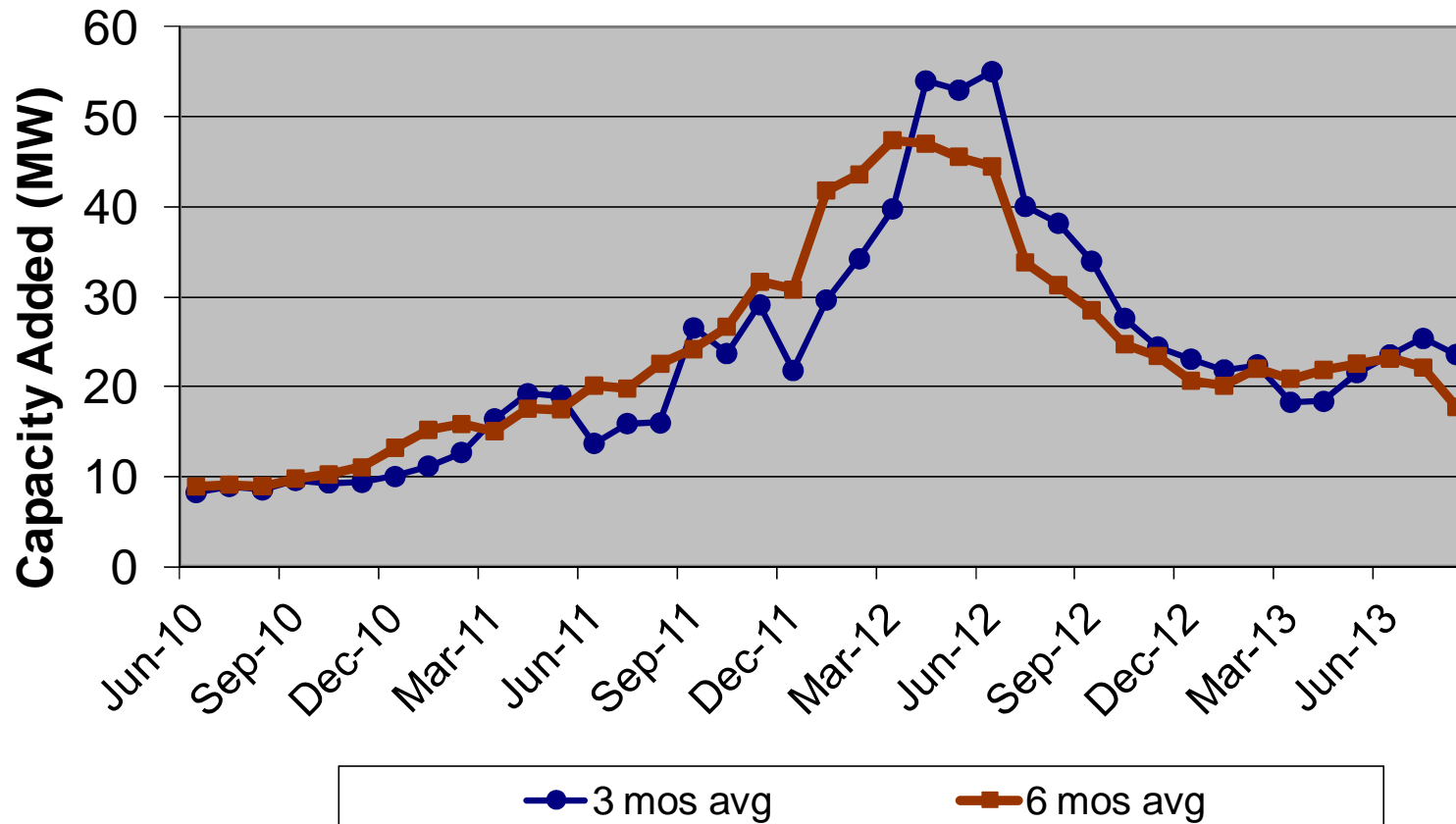
Solar Installed Capacity





Solar Installed Capacity

3 & 6 Month Moving Average of Capacity Added



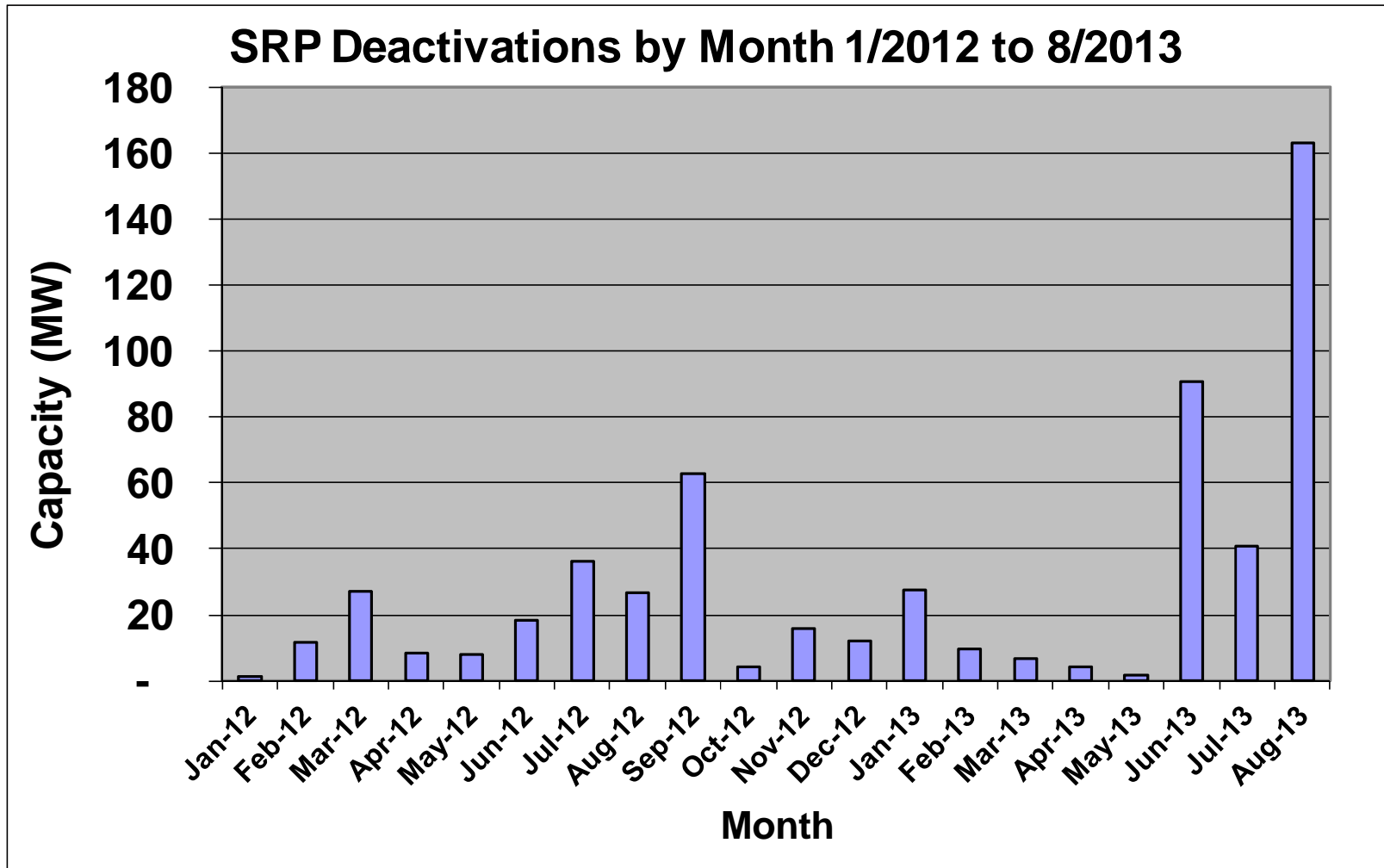


SRP Deactivations by Month

SRP Deactivations by Month as of 8/31/13		
Month End	Project Qty	Capacity (kW)
May-12	133	7,928
Jun-12	121	18,525
Jul-12	224	36,344
Aug-12	143	26,601
Sep-12	344	62,967
Oct-12	35	4,126
Nov-12	349	15,989
Dec-12	140	12,067
Jan-13	140	27,348
Feb-13	147	9,477
Mar-13	175	6,576
Apr-13	81	4,263
May-13	125	1,900
Jun-13	111	90,898
Jul-13	123	40,699
Aug-13	152	163,176
Totals	2543	528,884



SRP Deactivations by Month





NJCEP Solar Generation Forecast

This data is provided for informational purposes only. Past levels of installed capacity rates are not predictive of future values, and any persons considering investment in the solar market should perform their independent due diligence.



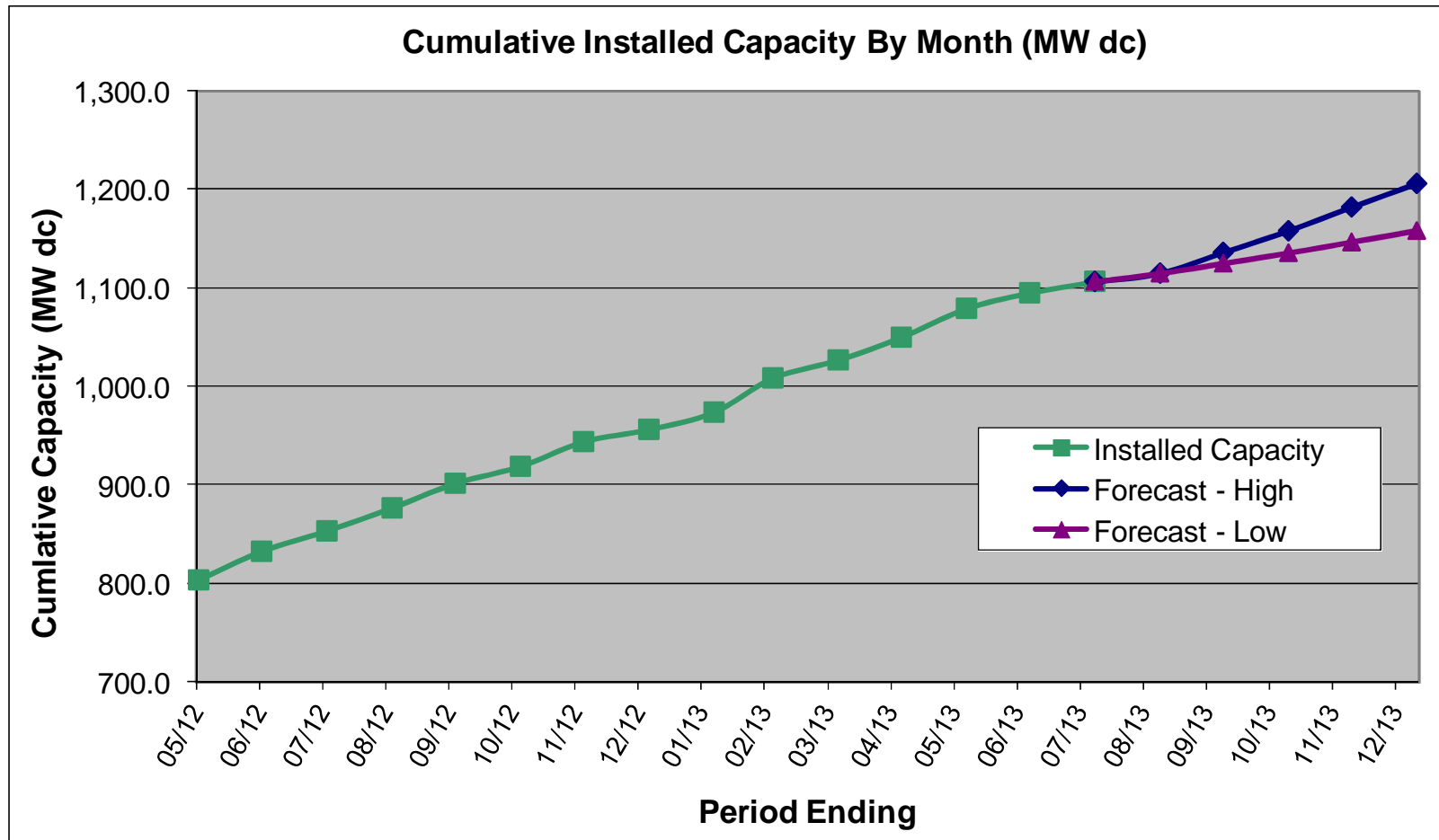
NJCEP Solar Installed Capacity Forecast - As of 7/31/13

Cumulative Installed Capacity (MW dc)											
End Date	02/28/13	03/31/13	04/30/13	05/31/13	06/30/13	07/31/13	08/31/13	09/30/13	10/31/13	11/30/13	12/31/13
Forecast - Low	1,007.9	1,026.2	1,049.3	1,078.6	1,094.3	1,105.9	1,114.4	1,124.4	1,134.9	1,145.9	1,157.4
Forecast - High	1,007.9	1,026.2	1,049.3	1,078.6	1,094.3	1,105.9	1,114.4	1,135.4	1,157.4	1,181.4	1,205.4

The 1,105.9 MW of solar capacity installed as of 07/31/13 and the additionally forecast installed solar capacity for the remainder of Energy Year 2014 is estimated to be capable of producing approximately 1,382,100 to 1,418,900 SRECs during Energy Year 2014.



NJCEP Solar Installed Capacity Forecast - As of 7/31/13





NJCEP Solar Generation Forecast

RPS Requirement By Energy Year

Energy Yr	RPS Req	Status
2012	442,000	Actual
2013	596,000	Actual
2014	1,660,500	Estimated
2015	1,984,500	Estimated
2016	2,227,500	Estimated

Energy Yr	Retail Sales Est (MWh)	RPS %	Est RPS Req (MWh)
2014	81,000,000	2.05%	1,660,500
2015	81,000,000	2.45%	1,984,500
2016	81,000,000	2.75%	2,227,500

Note: The Retail Sales estimates shown above were used to estimate RPS MWh requirement for EY 2014-2016



NJCEP Solar Generation Forecast

NJCEP Solar Generation Forecast

Assumptions used in forecast of annual capacity added for each EY

EY	Est Capacity Added (kW/Yr)			BTM Monthly Run Rate (kW/Month)			Estimated Annual Grid Supply Capacity Added (kW/Yr)		
	Low	Med	High	Low	Med	High	Low	Med	High
EY2014	263,720	303,096	335,824	16,810	19,508	21,069	62,000	69,000	83,000
EY2015	273,720	318,096	370,048	16,810	19,508	22,754	72,000	84,000	97,000
EY2016	283,720	330,096	406,888	16,810	19,508	24,574	82,000	96,000	112,000

Capacity added each year = (12 months x BTM monthly run rate) + annual grid supply added

Low, Med, High Assumptions used in forecast of annual capacity added for each EY:

Low Based upon 4 year historical run rate for BTM installs plus annual additions from grid supply table above

Med Based upon 1 year historical run rate for BTM installs plus annual additions from grid supply table above

High Based upon 1 year historical run rate for BTM installs with 8% growth per year plus annual additions from grid supply table above



NJCEP Solar Generation Forecast Summary By Energy Year - As of 7/31/13

Energy Yr	Item	Low	Med	High
EY2012 (Actual)	GATS Cert by Resource Eligibility	713,879	713,879	713,879
	SRECs Retried (MWh)	438,904	438,904	438,904
	% of RPS Requirement	161.5%	161.5%	161.5%
	SREC Carryover (MWh)	274,975	274,975	274,975
	Equivalent Capacity (MW)	229.1	229.1	229.1
EY2013	Est Capacity Added (MW/EY)	279.3	279.3	279.3
	Est Generation (MWh/EY)	1,112,800	1,112,800	1,112,800
	Carryover From Prior Years (MWh)	274,975	274,975	274,975
	Est Avail (MWh)	1,387,775	1,387,775	1,387,775
	RPS Req (MWh)	596,000	596,000	596,000
	% of RPS Requirement	232.8%	232.8%	232.8%
	SREC Carryover (MWh)	791,775	791,775	791,775
	Equivalent Capacity (MW)	659.8	659.8	659.8
EY2014	Est Capacity Added (MW/EY)	263.7	303.1	335.8
	Est Generation (MWh/EY)	1,382,100	1,399,500	1,418,900
	Carryover From Prior Years (MWh)	791,775	791,775	791,775
	Est Avail (MWh)	2,173,875	2,191,275	2,210,675
	RPS Req (MWh)	1,660,500	1,660,500	1,660,500
	% of RPS Requirement	130.9%	132.0%	133.1%
	SREC Carryover (MWh)	513,375	530,775	550,175
	Equivalent Capacity (MW)	427.8	442.3	458.5

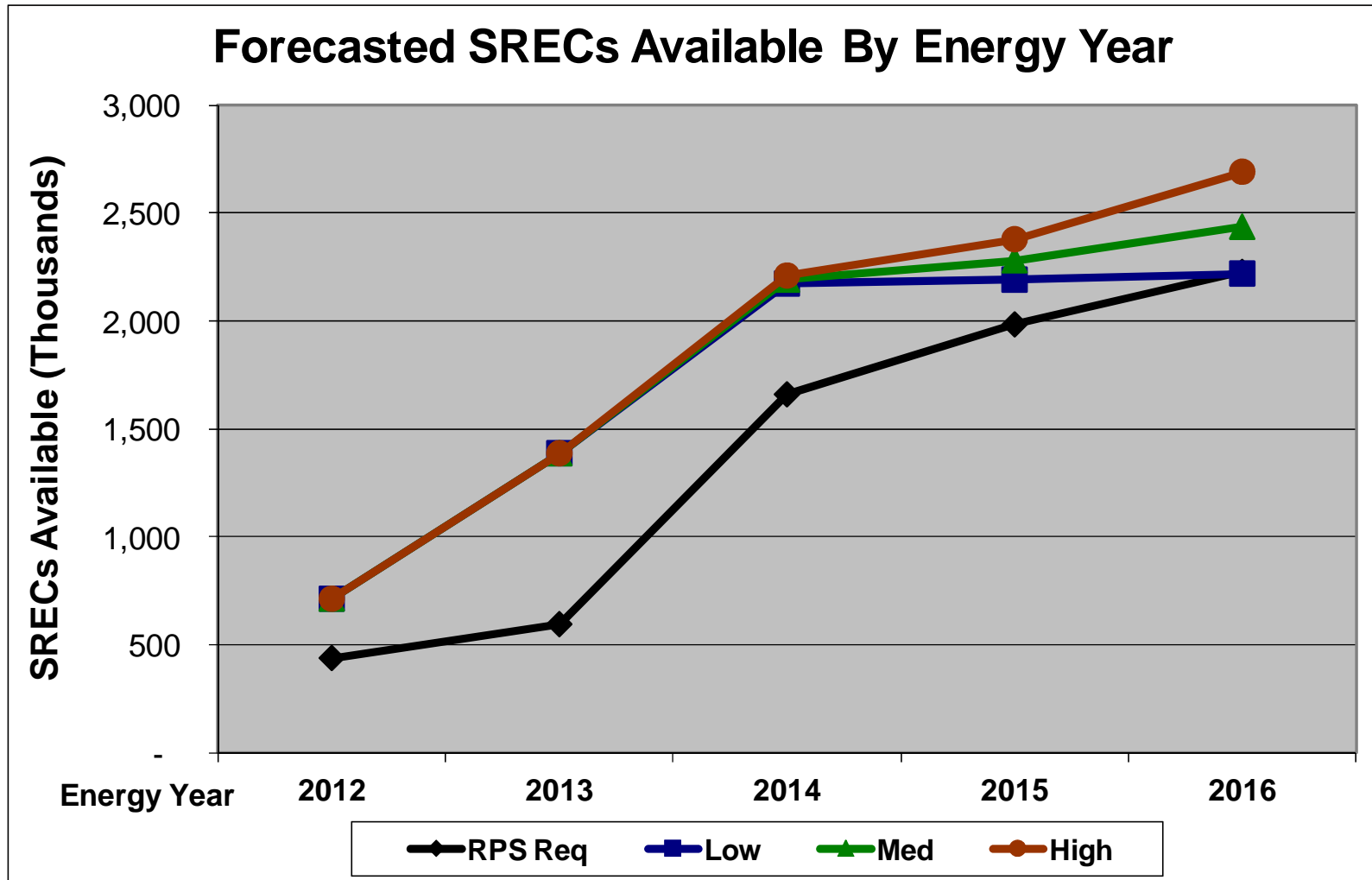


NJCEP Solar Generation Forecast Summary By Energy Year - As of 7/31/13

EY2015	Est Capacity Added (MW/EY)	273.7	318.1	370.0
	Est Generation (MWh/EY)	1,678,300	1,750,200	1,829,000
	Carryover From Prior Years (MWh)	513,375	530,775	550,175
	Est Avail (MWh)	2,191,675	2,280,975	2,379,175
	RPS Req (MWh)	1,984,500	1,984,500	1,984,500
	% of RPS Requirement	110.4%	114.9%	119.9%
	SREC Carryover (MWh)	207,175	296,475	394,675
	Equivalent Capacity (MW)	172.6	247.1	328.9
EY2016	Est Capacity Added (MW/EY)	283.7	330.1	406.9
	Est Generation (MWh/EY)	2,013,200	2,139,700	2,297,000
	Carryover From Prior Years (MWh)	207,175	296,475	394,675
	Est Avail (MWh)	2,220,375	2,436,175	2,691,675
	RPS Req (MWh)	2,227,500	2,227,500	2,227,500
	% of RPS Requirement	99.7%	109.4%	120.8%
	SREC Carryover (MWh)	(7,125)	208,675	464,175
	Equivalent Capacity (MW)	(5.9)	173.9	386.8



NJCEP Solar Generation Forecast



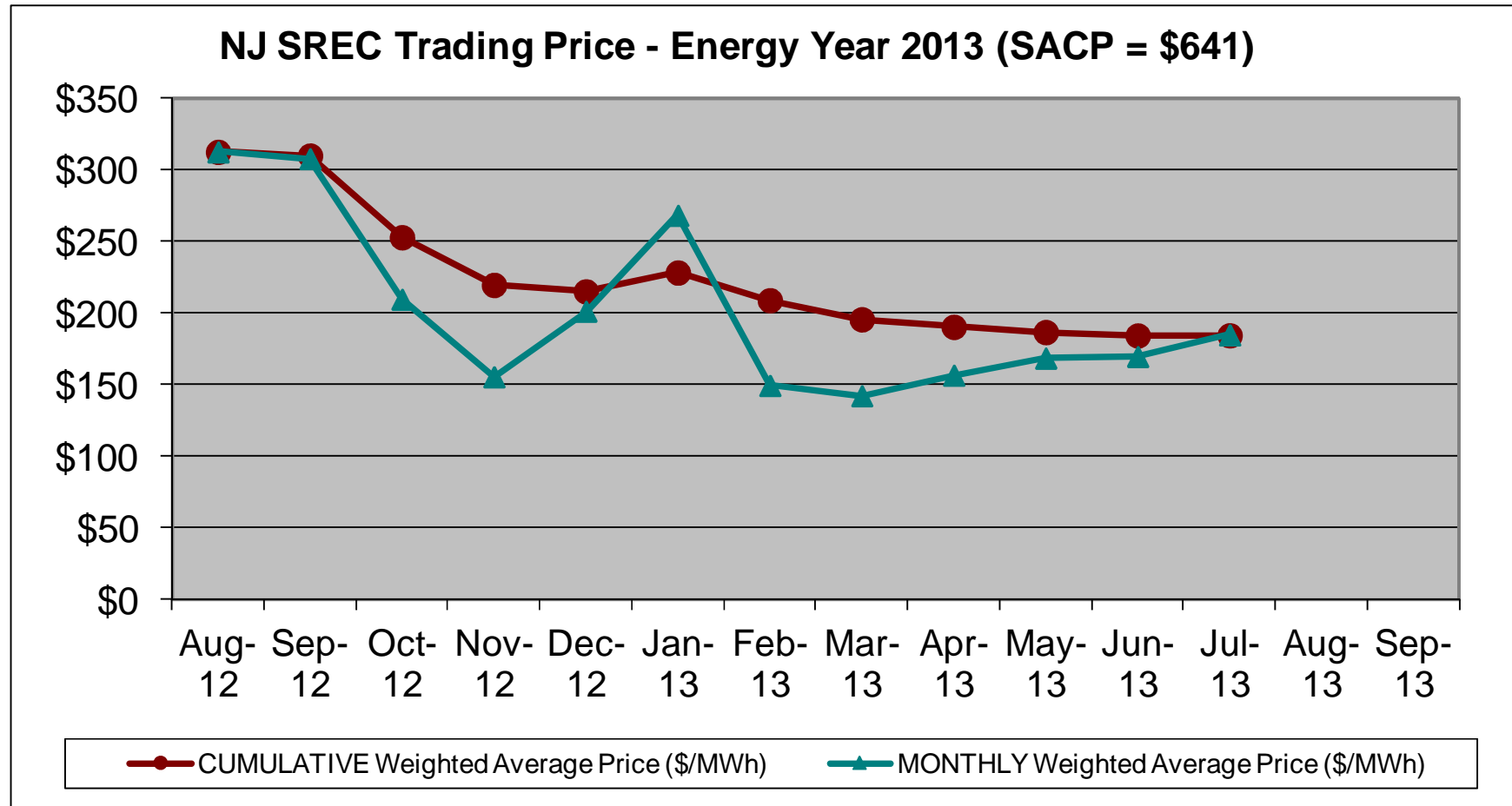


Current SREC Trading Statistics Energy Year 2013

EY 2013 SACP= \$641			SREC Quantity		Monthly		Cumulative	
Month	Year	Active kW DC	Issued in Month	Traded in Month	High (\$/MWh)	Low (\$/MWh)	# of SRECs Traded	Weighted Avg Price (\$/MWh)
Jul	2013	1,084,034	19,714	553,447	\$ 610	\$ 50	1,595,077	\$184.41
Jun	2013	1,060,225	157,361	145,381	\$ 641	\$ 50	1,041,630	\$184.28
May	2013	1,028,490	137,672	150,287	\$ 613	\$ 50	896,249	\$186.66
Apr	2013	996,610	96,105	100,390	\$ 640	\$ 40	745,962	\$190.31
Mar	2013	977,097	61,194	128,898	\$ 641	\$ 68	645,572	\$195.57
Feb	2013	941,614	55,566	126,629	\$ 620	\$ 40	516,674	\$208.88
Jan	2013	930,560	47,642	96,603	\$ 641	\$ 40	390,045	\$228.20
Dec	2012	907,466	65,933	72,070	\$ 620	\$ 40	293,442	\$215.06
Nov	2012	895,911	60,244	75,602	\$ 658	\$ 60	221,372	\$219.56
Oct	2012	876,258	90,783	82,813	\$ 658	\$ 40	145,770	\$252.81
Sept	2012	860,151	106,498	34,124	\$ 650	\$ 50	62,957	\$309.77
Aug	2012	845,345	101,993	21,510	\$ 620	\$ 50	28,833	\$312.37
Jul	2012	823,935	95,855	7,323	Due to low trade volume, the July trades are reported with the pricing data for August.			
	Total		1,096,560	1,595,077				



Current SREC Trading Statistics Energy Year 2013





For More Information

Subscribe to the Renewable Energy Committee Notification list

<http://mail.njcleanenergy.com/mailman/listinfo/Renewables>

New Jersey Clean Energy Program Renewable Energy Reports

<http://www.njcleanenergy.com/renewable-energy/project-activity-reports/project-activity-reports>

<http://www.njcleanenergy.com/renewable-energy/project-activity-reports/program-status-reports/program-status-reports>

NJ SREC Trading Statistics for each Energy Year

<http://www.njcleanenergy.com/renewable-energy/project-activity-reports/srec-pricing/srec-pricing>