



Initiation of a Proceeding to Investigate Approaches to Mitigate Solar Development Volatility pursuant to N.J.S.A. 48:3-87(d)(3)(a)

**Prepared by Charlie Garrison
February 11, 2014
Renewable Energy Meeting
Trenton, NJ**



Solar Installed Capacity Data

- The preliminary installed solar capacity as of 1/31/14 is approximately 1,201.4 MW.
 - Approximately 17 MW installed in current month.
- The preliminary solar capacity project pipeline as of 1/31/14 is approximately 323.5 MW.
 - The project pipeline decreased approximately 14.5 MW in the current month.



NJCEP Solar Installed Projects Plus Pipeline Projects

Preliminary Values As of 1/31/14

Installed Solar Projects

Interconnection Type	Project Qty	Total Capacity (KW DC)	Percent of Capacity	Avg System Size (kW DC)
Behind the meter	26,325	967,573.5	80.5%	36.8
Direct Grid Supply	113	233,837.6	19.5%	2,069.4
Installed Totals	26,438	1,201,411.1	100.0%	45.4

Solar Project Pipeline

Interconnection Type	Project Qty	Total Capacity (KW DC)	Percent of Capacity	Avg System Size (kW DC)
Behind the meter	4,057	134,505.6	41.6%	33.2
Direct Grid Supply	26	188,946.2	58.4%	7,267.2
Pipeline Totals	4,083	323,451.8	100.0%	79.2

Totals For All Projects	30,521	1,524,862.9		50.0
--------------------------------	---------------	--------------------	--	-------------



NJCEP Solar Pipeline Plus Installed Projects History

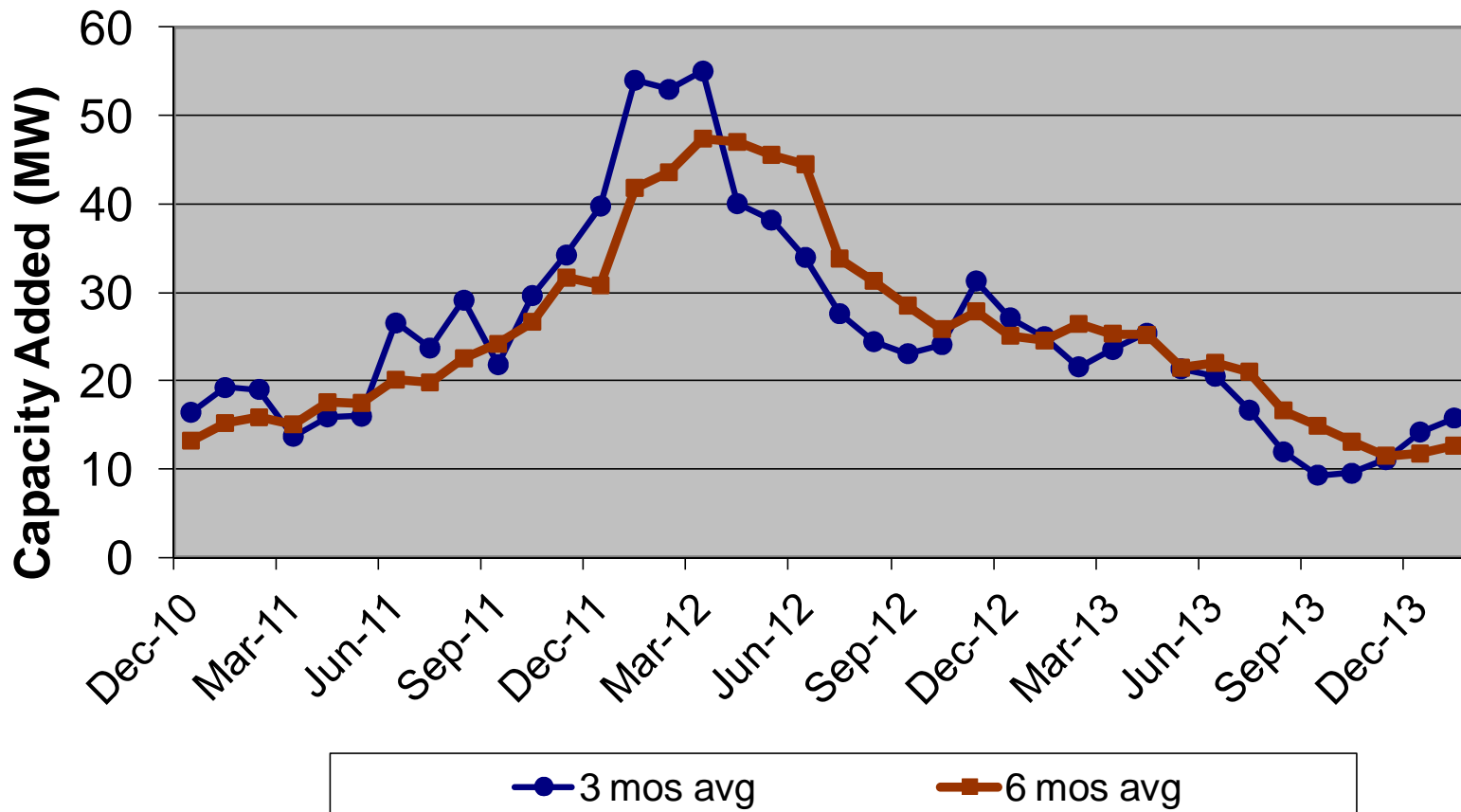
NJCEP Solar Pipeline Plus Installed Projects History as of 1/31/14			
As Of	MW Installed	MW Pipeline	Combined MW
9/30/2012	900.9	739.9	1,640.8
10/31/2012	924.9	732.0	1,656.9
11/30/2012	969.9	723.5	1,693.4
12/31/2012	982.3	717.6	1,699.9
1/31/2013	999.8	704.9	1,704.7
2/28/2013	1,034.5	675.4	1,709.9
3/31/2013	1,052.8	675.5	1,728.3
4/30/2013	1,075.9	660.2	1,736.1
5/31/2013	1,098.5	656.9	1,755.4
6/30/2013	1,114.3	562.5	1,676.8
7/31/2013	1,125.8	516.9	1,642.7
8/31/2013	1,134.3	357.1	1,491.4
9/30/2013	1,142.3	354.4	1,496.7
10/31/2013	1,155.4	357.4	1,512.8
11/30/2013	1,168.1	346.3	1,514.4
12/31/2013	1,184.5	338.0	1,522.5
1/31/2014	1,201.4	323.5	1,524.9

Preliminary values for 1/31/14



Solar Installed Capacity All Projects

3 & 6 Month Moving Average of Capacity Added



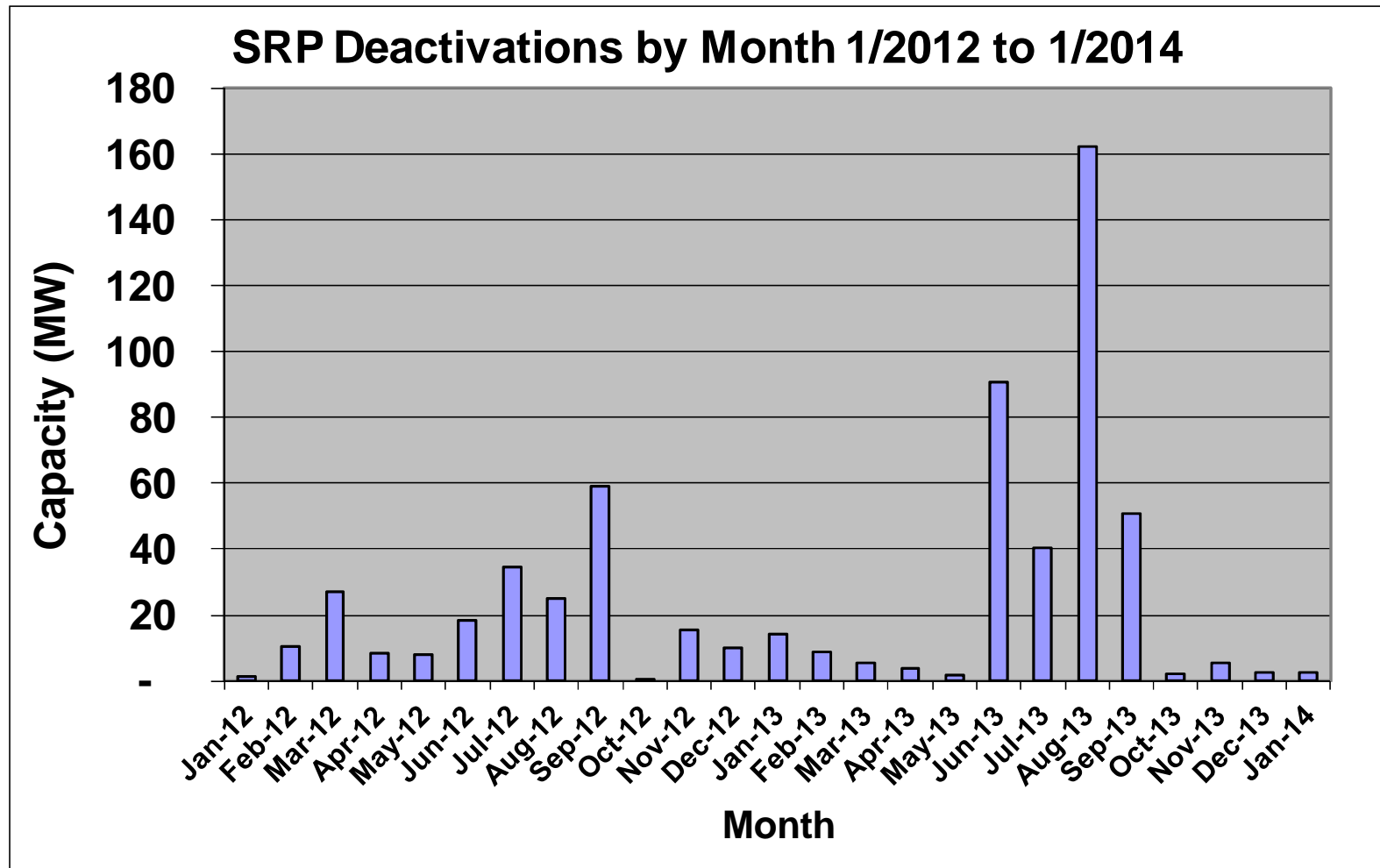


SRP Deactivations by Month

SRP Deactivations by Month as of 1/31/14		
Month End	Project Qty	Capacity (kW)
Oct-12	2	21
Nov-12	324	15,322
Dec-12	121	9,849
Jan-13	115	14,110
Feb-13	120	8,675
Mar-13	137	5,550
Apr-13	69	3,930
May-13	105	1,532
Jun-13	92	90,673
Jul-13	94	40,494
Aug-13	128	162,138
Sep-13	79	50,658
Oct-13	102	2,236
Nov-13	125	5,537
Dec-13	128	2,728
Jan-14	128	2,742
Totals	1,869	416,194



SRP Deactivations by Month



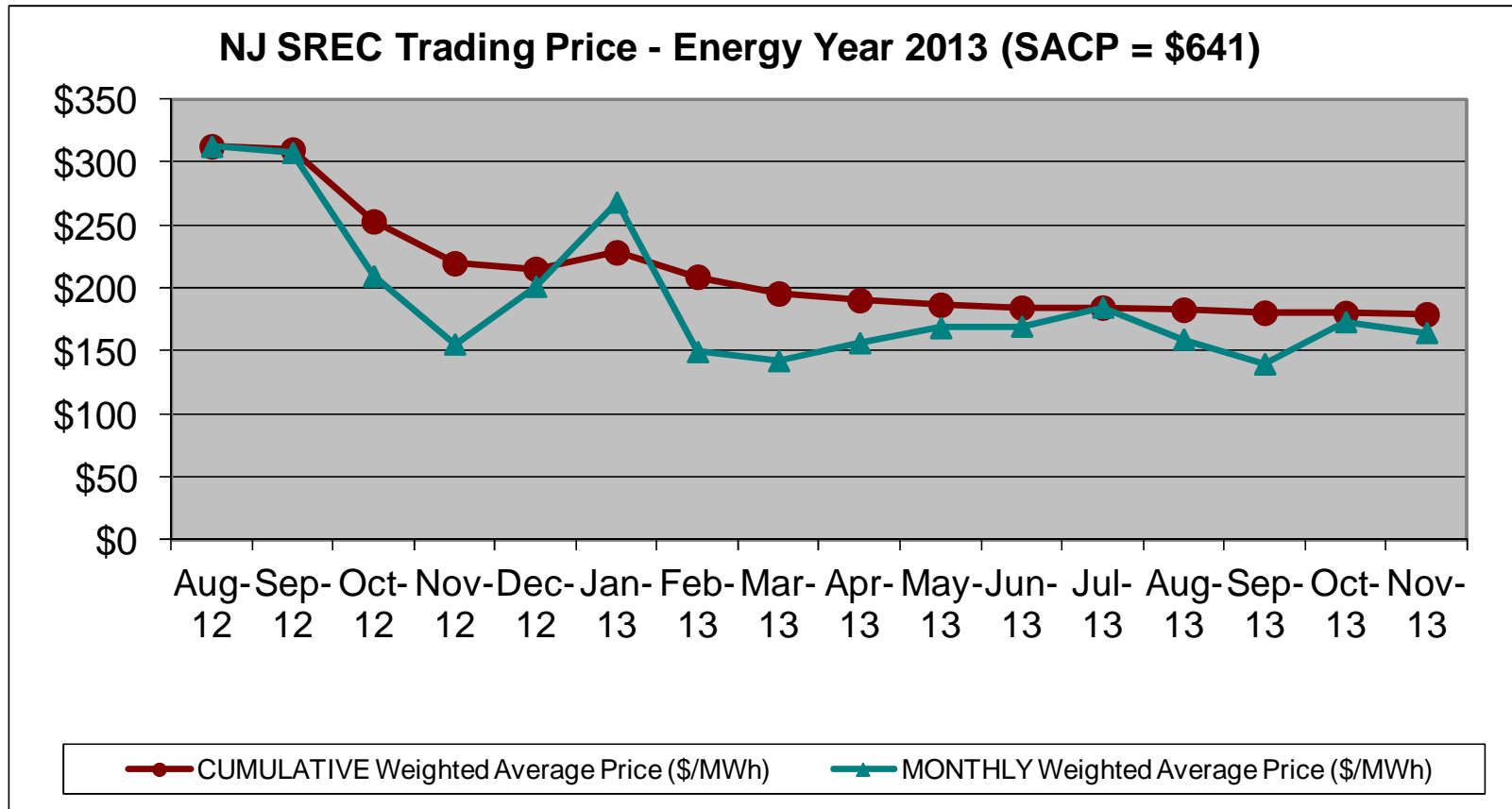


Final SREC Trading Statistics Energy Year 2013

EY 2013 SACP= \$641			SREC Quantity		Monthly		Cumulative	
Month	Year	Active kW DC	Issued in Month	Traded in Month	High (\$/MWh)	Low (\$/MWh)	# of SRECs Traded	Weighted Avg Price (\$/MWh)
Nov	2013	1,120,252	3,082	135,241	\$ 600	\$ 75	2,005,366	\$179.04
Oct	2013	1,114,753	8,930	58,315	\$ 599	\$ 106	1,870,125	\$180.08
Sept	2013	1,104,548	5,550	101,996	\$ 641	\$ 70	1,811,810	\$180.30
Aug	2013	1,098,075	9,454	114,737	\$ 585	\$ 70	1,709,814	\$182.72
Jul	2013	1,084,133	19,714	553,447	\$ 610	\$ 50	1,595,077	\$184.41
Jun	2013	1,060,324	157,361	145,381	\$ 641	\$ 50	1,041,630	\$184.28
May	2013	1,028,590	137,672	150,287	\$ 613	\$ 50	896,249	\$186.66
Apr	2013	996,709	96,105	100,390	\$ 640	\$ 40	745,962	\$190.31
Mar	2013	977,196	61,194	128,898	\$ 641	\$ 68	645,572	\$195.57
Feb	2013	941,713	55,566	126,629	\$ 620	\$ 40	516,674	\$208.88
Jan	2013	930,659	47,642	96,603	\$ 641	\$ 40	390,045	\$228.20
Dec	2012	907,565	65,933	72,070	\$ 620	\$ 40	293,442	\$215.06
Nov	2012	896,006	60,244	75,602	\$ 658	\$ 60	221,372	\$219.56
Oct	2012	876,353	90,783	82,813	\$ 658	\$ 40	145,770	\$252.81
Sept	2012	860,246	106,498	34,124	\$ 650	\$ 50	62,957	\$309.77
Aug	2012	845,440	101,993	21,510	\$ 620	\$ 50	28,833	\$312.37
Jul	2012	824,030	95,855	7,323	Due to low trade volume, the July trades are reported with the pricing data for August.			
	Total		1,123,576	2,005,366				



Final SREC Trading Statistics Energy Year 2013



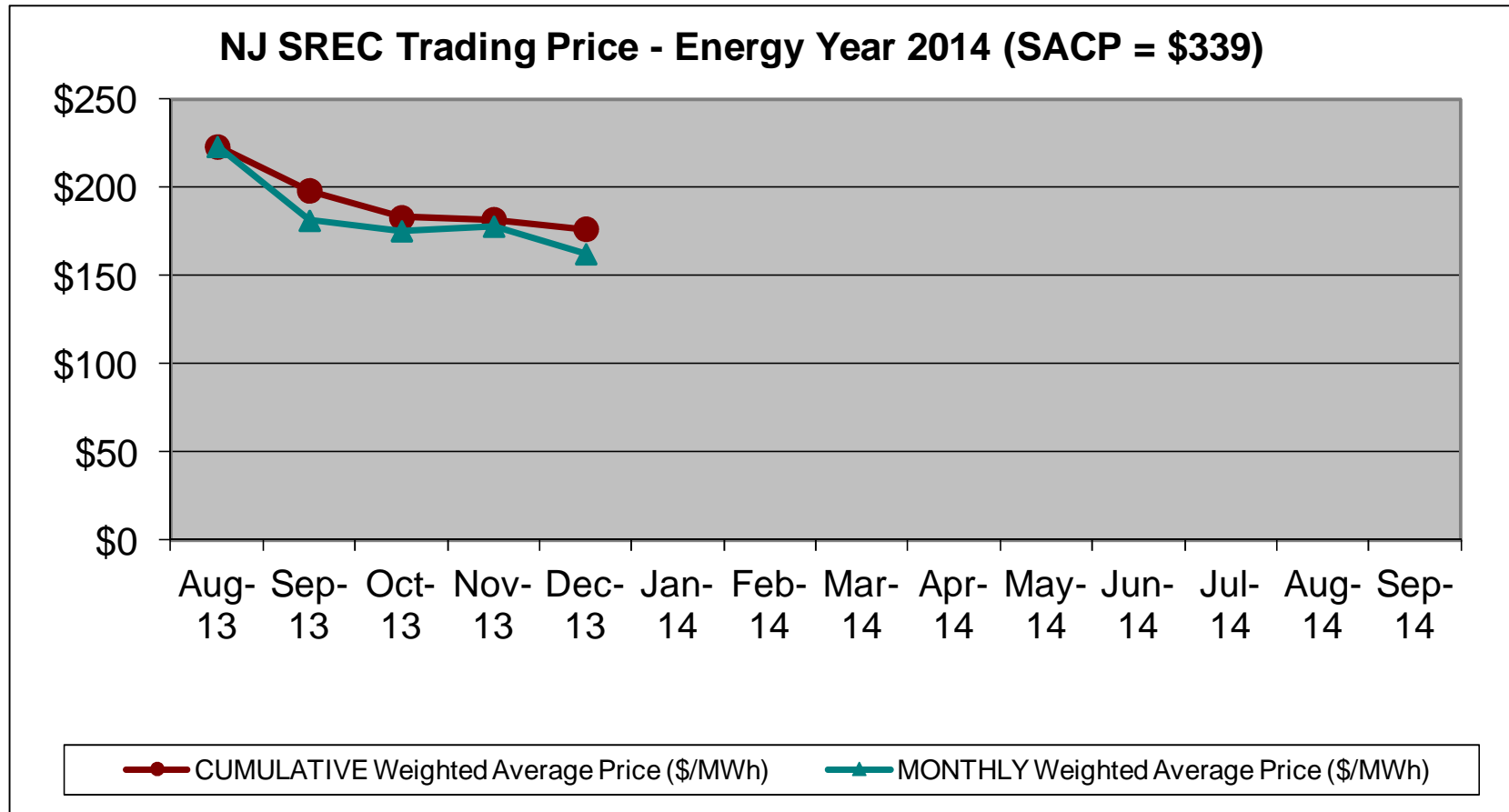


Current SREC Trading Statistics Energy Year 2014

EY 2014 SACP= \$339			SREC Quantity		Monthly		Cumulative	
Month	Year	Active kW DC	Issued in Month	Traded in Month	High (\$/MWh)	Low (\$/MWh)	# of SRECs Traded	Weighted Avg Price (\$/MWh)
May	2014							
Apr	2014							
Mar	2014							
Feb	2014							
Jan	2014							
Dec	2013	1,133,807	103,455	143,767	\$ 590	\$ 40	522,730	\$176.45
Nov	2013	1,120,256	91,969	77,064	\$ 510	\$ 70	378,963	\$181.86
Oct	2013	1,114,756	132,960	201,965	\$ 641	\$ 50	301,899	\$182.89
Sept	2013	1,104,551	126,470	59,396	\$ 545	\$ 50	99,934	\$198.19
Aug	2013	1,098,075	121,102	36,469	\$ 545	\$ 50	40,538	\$223.03
Jul	2013	1,084,133	120,692	4,069	Due to low trade volume, the July trades are reported with the pricing data for August.			
	Total		696,648	522,730				



Current SREC Trading Statistics Energy Year 2014





For More Information

Subscribe to the Renewable Energy Committee Notification list

<http://www.njcleanenergy.com/RElist>

New Jersey Clean Energy Program Renewable Energy Reports
Installation Summary by Technology

<http://www.njcleanenergy.com/projectreports>

Program Status Reports

<http://www.njcleanenergy.com/statusreports>

NJ SREC Trading Statistics for each Energy Year

<http://www.njcleanenergy.com/srecpricing>