



June 27, 2017

In the Matter of the Petition of  
Public Service Electric and Gas Company  
for Approval of a Solar Generation Investment  
Program and an Associated Cost Recovery Mechanism  
BPU Docket No. EO09020125

**VIA E-MAIL AND REGULAR MAIL**

Irene Kim Asbury, Secretary  
New Jersey Board of Public Utilities  
44 South Clinton Ave., 3<sup>rd</sup> Fl., Suite 314  
P.O. Box 350  
Trenton, New Jersey 08625-0350

**RE: SOLAR 4 ALL MONTHLY ACTIVITY REPORT – MAY 2017**

Dear Secretary Asbury:

Pursuant to the Board's August 3, 2009 Order in the above referenced matter and subsequent discussions between PSE&G and Board Staff, enclosed are copies of the confidential and redacted public versions of Public Service Electric and Gas Company's Solar 4 All Monthly Program Activity Report for May 2017 ("Report").

As indicated, the Report contains proprietary, commercially sensitive financial information and portions of the Report are entitled to confidential treatment pursuant to Board regulations set forth at N.J.A.C. 14:1-12. Accordingly, PSE&G requests that the Board accord the redacted portions of the Report confidential treatment in accordance with those regulations, and that the redacted portions of the Report not be subject to public disclosure. In support of this request PSE&G submits the Affidavit of Todd Hranicka. Public Service is also serving Rate Counsel with the public and confidential versions of the Report and with Mr. Hranicka's Affidavit. By copy of this letter, it is respectfully requested that Rate Counsel maintain the confidentiality of this material as well.

Note that the electronic submission of this material includes only the public version of the Report and Mr. Hranicka's Affidavit; the confidential Report is being provided via regular mail.

Please advise if you have any questions or comments.

Respectfully submitted,

A handwritten signature in blue ink that reads "Matthew M. Weissman".

Matthew M. Weissman

C Scott Hunter  
Rachel Boylan  
Linda Wetzell  
Stefanie Brand  
Felicia Thomas-Friel

STATE OF NEW JERSEY :

ss:

COUNTY OF ESSEX :

Todd Hranicka, being of full age and duly sworn deposes and says:

1. I am the Director of Solar Energy for Public Service Electric and Gas Company (“PSE&G”) and, as such, I am responsible for reporting to the Board of Public Utilities (“Board”) status updates for the PSE&G’s Solar 4 All Programs as approved by the Board in an Order Approving Stipulation, *In The Matter of Petition of Public Service Electric and Gas Company For Approval of a Solar Generation Investment Program and Associated Cost Recovery Mechanism*, dated August 3, 2009, under Docket Number EO09020125.

2. I make this affidavit in support PSE&G’s request for confidential treatment of portions of its Solar 4 All Monthly Activity Report (“report”) that has been filed with the Board.

3. Project specific cost information, (“Confidential Information”), which the Board has requested be included in the report, is proprietary, commercially sensitive financial information. If this data were publicly available, PSE&G’s competitors would have access to this commercially sensitive information. Access to this Competitive Information would provide these competitors with an informed understanding of how PSE&G bids for specific projects and potentially permit the competitors to develop strategies to gain an unfair advantage in the solar marketplace in which PSE&G participates.

4. PSE&G has taken purposeful measures to prevent dissemination of the Competitive Information. Access to the information is restricted to a small number of people within PSE&G. The Competitive Information is not contained in materials that are available to the general public.

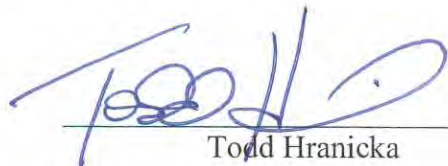
5. PSE&G requests that the Board maintain the confidentiality of the Competitive Information for an indefinite period of time. The release of PSE&G's Competitive Information from the past years may enable PSE&G's competitors to make an educated guess at PSE&G's current bidding process. For this reason, the confidentiality of the Competitive Information should be maintained for an indefinite period of time.

6. Therefore, the Board should grant PSE&G's request for confidential treatment of a portion of the report, redacting the specific project cost information. A proposed form of a redacted report is being filed with this affidavit.

7. I swear that the foregoing statements are true to the best of my knowledge.

8. PSE&G submits the following as the addressee for communications from the custodian for this information under *N.J.A.C. 14:2-12.1. et. Seq.* The Company hereby requests that all custodian communications (oral and written), including, without limitation, the notices listed in *N.J.A.C. 14:1-12.7* and *12.9* be directed to the following designee:

Matthew M. Weissman, Esq.  
General Regulatory Counsel – Rates  
Public Service Electric and Gas Company  
80 Park Plaza - T5G  
Newark, New Jersey 07102  
Tel. No. (973) 430-7052  
Fax. No. (973) 430-5983  
E-mail: [Matthew.Weissman@pseg.com](mailto:Matthew.Weissman@pseg.com)

  
\_\_\_\_\_  
Todd Hranicka

Sworn to and Subscribed to

Before me this 27<sup>th</sup> day of June, 2017



**JUNE BARNETT**  
**NOTARY PUBLIC OF NEW JERSEY**  
**My Commission Expires 7/31/2018**

**Solar 4 All Monthly Activity Report - May 2017**

Site	Property Owner	Cost per Project (\$k)	NPV of 20 Year Lease Cost (\$k)	EPC Contractor	Site Location Address
<b>Segment 1a</b>					
Linden	PSE&G		N/A	ASP	South Wood Avenue, Linden, NJ 07036
Yardville	PSE&G		N/A	ACE	Broad Street, Hamilton, NJ 08611
Silver Lake	PSE&G		N/A	JFC	410 Silver Lake Avenue, Edison, NJ 08817
Trenton	PSE&G		N/A	SunEdison	500-520 Brunswick Avenue, Trenton, NJ 08638
Central HQ	PSE&G		N/A	Solis (Solyndra)	472 Weston Canal Road, Franklin, NJ 08873
Edison Training	PSE&G		N/A	Henkle & McCoy	234 Pierson Avenue, Edison, NJ 08837
Thorofare	PSE&G		N/A	SunEdison	Jessup Road, Thorofare, NJ 08086
Hackensack	PSE&G		N/A	JFC	194-210 South River Street, Hackensack NJ 07601
Metro/Clifton	PSE&G		N/A	Gloria Solar	150 Circle Ave, Clifton, NJ 07011
S. DivHQ Moorestown	PSE&G		N/A	Vanguard	360 New Albany Road, Moorestown, NJ
<b>Segment 1b</b>					
CPP Bayonne	CenterPoint Properties		\$1,402	ASP	30-100 Pulaski Street, Bayonne, NJ 07002
Matrix - Stults Rd	Matrix Development Group		\$2,228	Pro-Tech	45 Stults Rd, South Brunswick, NJ 08810
Rider	Rider University		\$642	Alteris	2083 Lawrenceville Road, Lawrenceville, NJ 08648
NJMC / Kearny Landfill	NJ Meadowland Commission		\$2,561	Sundurance	932 Bellville Turnpike, Kearny, Hudson County NJ 07032
Mill Creek	Judith Tucci		\$3,189	Juwi	600 Irick Road, Westampton, NJ 08060
Food Bank	Community Food Bank of NJ		\$772	Mercury	31 Evans Terminal, Hillside, NJ 07250
Raritan Center	Summit Associates Inc.		\$1,729	ASP	45 Fernwood Avenue and 110 Fieldcrest Avenue, Edison, NJ 08818
BlackRock-Matrix	Granite South Brunswick, LLC		\$1,800	Pro-Tech	140 Docks Corner Road, South Brunswick, NJ 08810
<b>Segment 1c</b>					
Matrix Bldg A & B	Matrix Development		\$2,191	enXco	1000 & 1050 Amboy Ave, Perth Amboy, NJ 08861
Barringer	Newark Public Schools		\$635	Mercury	90 Parker St, Newark, NJ 07104
Park	Newark Public Schools		\$482	Mercury	120 Manchester Place, Newark, NJ 07104-1704
Camden (NWK)	Newark Public Schools		\$971	ALM	281 & 321 Camden Street Newark, New Jersey 07103
New Central HS	Newark Public Schools		\$495	LB Electric	246 18th Ave, Newark, NJ 07108
<b>Segment 2</b>					
Pole-Attached	PSE&G		N/A	Riggs-Distler	Various

**Notes:**

"Cost per Project" corresponds to projects that have been placed in service.

"NPV of 20 Year Lease Cost" is derived using an annual discount rate of 5.07%

Regarding Segment 2 (Pole-attached): Riggs Distler is the installation contractor, not an EPC contractor

"Cost per Project" includes AFUDC

**Solar 4 All Monthly Activity Report - May 2017**

Site	Owner location	Type of customer	Status of the installation	Capacity of Project (MW-DC)
<b>Segment 1a</b>				
Linden	80 Park Plaza, Newark, NJ 07102	Utility	Commercial Operation	3.20
Yardville	80 Park Plaza, Newark, NJ 07102	Utility	Commercial Operation	4.30
Silver Lake	80 Park Plaza, Newark, NJ 07102	Utility	Commercial Operation	2.02
Trenton	80 Park Plaza, Newark, NJ 07102	Utility	Commercial Operation	1.26
Central HQ	80 Park Plaza, Newark, NJ 07102	Utility	Commercial Operation	0.92
Edison Training	80 Park Plaza, Newark, NJ 07102	Utility	Commercial Operation	0.71
Thorofare	80 Park Plaza, Newark, NJ 07102	Utility	Commercial Operation	0.72
Hackensack	80 Park Plaza, Newark, NJ 07102	Utility	Commercial Operation	1.05
Metro/Clifton	80 Park Plaza, Newark, NJ 07102	Utility	Commercial Operation	0.73
S. DivHQ Moorestown	80 Park Plaza, Newark, NJ 07102	Utility	Commercial Operation	1.07
<b>Segment 1b</b>				
CPP Bayonne	1808 Swift Drive, Oak Brook, IL 60523-1501	Warehouse	Commercial Operation	1.75
Matrix - Stults Rd	Forsgate Drive CN 4000, Cranbury, NJ 08512	Warehouse	Commercial Operation	2.98
Rider	2083 Lawrenceville Road, Lawrenceville, NJ 08548	University	Commercial Operation	0.74
NJMC / Kearny Landfill	One DeKorte Park Plaza, Lyndhurst, NJ 07071	Landfill	Commercial Operation	3.00
Mill Creek	4 St. Albans Place, Haworth, NJ 07641	Private Landowner	Commercial Operation	3.82
Food Bank	31 Evans Terminal Rd, Hillside, New Jersey 07250	Warehouse	Commercial Operation	1.07
Raritan Center	Raritan Plaza I, Edison, NJ 08818	Warehouse	Commercial Operation	2.22
BlackRock-Matrix	BlackRock, 40 E. 52nd Street, New York, NY 10022	Warehouse	Commercial Operation	2.97
<b>Segment 1c</b>				
Matrix Bldg A & B	Forsgate Drive CN 4000, Cranbury, NJ 08512	Warehouse	Commercial Operation	2.86
Barringer	Newark Public Schools, 2 Cedar Street, Newark NJ 07102-3051	Public Schools	Commercial Operation	0.65
Park	Newark Public Schools, 2 Cedar Street, Newark NJ 07102-3051	Public Schools	Commercial Operation	0.51
Camden (NWK)	Newark Public Schools, 2 Cedar Street, Newark NJ 07102-3051	Public Schools	Commercial Operation	0.91
New Central HS	Newark Public Schools, 2 Cedar Street, Newark NJ 07102-3051	Public Schools	Commercial Operation	0.50
<b>Segment 2</b>				
Pole-Attached	80 Park Plaza, Newark, NJ 07102	Utility	Comm Op / Ongoing Construc	38.32

**Solar 4 All Monthly Activity Report - May 2017**

Site	Equipment installed (Inverters; Panels)
<b>Segment 1a</b>	
Linden	Six Sunny Central SC500-HE-US inverters; 7,766 Suntech STP280-24/Vd, 3,718 STP275-24/Vd panels
Yardville	Eight Advanced Energy Solaron 3159500-0001A2 inverters, one Solaron 250 inverters; 5,640 Suntech STP270-24/VD, 4,368 STP275-24/VD, 1,512 STP280-24/VD panels
Silver Lake	Three SMA Sunny Central SC 500U, one SC 250U inverters; 3,514 Sharp ND-224UC1, 5,236 ND-U235F1
Trenton	Three Satcon PowerGate Plus PVS-500 inverters; 5,496 Yingli Solar YL230b-29b panels
Central HQ	One Satcon PowerGate Plus PVS-135, one PVS-250, one PVS-375 inverters; 4,180 Solyndra SL-001-182U, 648 Solar World SW240MONO panels
Edison Training	One Satcon PowerGate Plus PVS-500, one PVS-135 inverters; 3,164 Gloria Solar GSM6-225D-E1 panels
Thorofare	One Advanced Energy Solaron-500kW, one Solaron-250kW inverters; 2,618 SunTech STP275-24Vd panels
Hackensack	Two Advanced Energy Solaron-500kW, 4,472 MX Solar MX-60-235 panels
Metro/Clifton	Four Satcon Powergate Plus PVS-75, two PVS-135 inverters; 3,122 Gloria Solar GSM6-235D-E1 panels
S. DivHQ Moorestown	Three Advanced Energy PVP 260 Inverters; one PVP 100 and one PVP 50 Inverter. 4,563 MX60-235 panels
<b>Segment 1b</b>	
CPP Bayonne	Three SMA SC500U inverters; 7,938 Trina Solar TSM-220PA05 panels
Matrix - Stults Rd	Five Solaron 3159500-1001AD inverters; 12,684 Kyocera K0235GX-LPB panels
Rider	Two AEI inverters; 2,640 Suntech STP-280 panels
NJMC / Kearny Landfill	Seven Advanced Energy Solaron inverters 2x500kW, 3x333kW, 2x250kW; 12,506 Kyocera KD240GX-LFB panels
Mill Creek	Seven SMA America SC500U inverters; 29,400 Solar Frontier SF-130-L panels
Food Bank	Two Advanced Energy Solaron 500kW inverters; 4,667 Trina Solar TSM-230PA05 panels
Raritan Center	Four SMA Sunny Central 600US, One SMA SB8000US inverters; 7,098 Hyundai HIS-M230SG, 2,604 HIS-M227SG panels
BlackRock-Matrix	Five AE Solaron 3159000-1001AJ inverters; 12,376 Upsolar UP-M240P panels
<b>Segment 1c</b>	
Matrix Bldg A & B	Five SMA SC500U inverters; 10,395 Suntech STP275-24VD panels
Barringer	Two Satcon PowerGate Plus PVS-250, one PVS-135 inverters; 2,310 Suntech STP280-24VB-1 panels
Park	One Satcon PowerGate Plus PVS-375, one PVS-100, one PVS-75 inverters; 1,440 Sunpower PL-SUN-SPR-305-U, 264 Suntech STP270-24/VB-1 panels
Camden (NWK)	One Solaron 3159000-1000 A1, one Solaron 3159000-1000 A1; 3,264 ET Solar ET-P672280 panels
New Central HS	Two Satcon PowerGate Plus PVS-100, three Satcon Solstice SDMSO100480-LNIU inverters; 1,857 Suntech STP270-24/VB-1 panels
<b>Segment 2</b>	
Pole-Attached	Suntech STP200-18/UB-1, STP205-18/UD, STP210-18/UB-1, STP215-20/WD, STP220-20/WD, STP225-20/WD, Trina Solar TSM-220PA05, TSM-225PA05, TSM-235PA05, TSM-240PA05

**Solar 4 All Monthly Activity Report - May 2017**

**May 2017 Monthly Update**

Segment	Energy Produced (MWh AC)	Net Energy Sales (\$)	SREC's Sold	SREC Revenue (\$)	Capacity Sold (MW-days)	Net Capacity Sales (\$)	Business Interruption Insurance Recovery (\$)	Investment (\$)	Program Expenses (\$)	Projects Completed / Seg 2 Panels Installed	MW Installed	Pole-attached Units Communicating
Segment 1a	1,964	\$ 62,040	-	\$ -	148.8	\$ 33,395	\$0	\$0	\$33,629	0	0.0	
Segment 1b	2,159	\$ 69,246	-	\$ -	182.9	\$ 40,446	\$0	\$0	\$127,916	0	0.0	
Segment 1c	650	\$ 20,680	-	\$ -	58.9	\$ 12,268	\$0	\$14,883	\$103,185	0	0.0	
Segment 2	3,377	\$ 108,570	-	\$ -	347.2	\$ 76,469	\$0	\$47,276	\$144,055	74	0.004	159,012
<b>Program Total</b>	<b>8,150</b>	<b>\$ 260,536</b>	<b>-</b>	<b>\$ -</b>	<b>737.8</b>	<b>\$ 162,579</b>	<b>\$0</b>	<b>\$62,159</b>	<b>\$408,785</b>	<b>74</b>	<b>0.004</b>	

**Solar 4 All Year-to-Date Activity Report**

**Year-to-Date Update through May 2017**

Segment	Energy Produced (MWh AC)	Net Energy Sales (\$)	SREC's Sold	SREC Revenue (\$)	Capacity Sold (MW-days)	Net Capacity Sales (\$)	Business Interruption Insurance Recovery (\$)	Investment (\$)	Program Expenses (\$)	Projects Completed / Seg 2 Panels Installed	MW Installed
Segment 1a	7,157	\$ 208,361	2,664	\$ 629,477	729.6	\$ 163,625	\$0	\$930	\$243,057	0	0.0
Segment 1b	8,142	\$ 245,036	2,884	\$ 681,460	896.8	\$ 198,171	\$0	\$0	\$753,258	0	0.0
Segment 1c	2,197	\$ 63,385	731	\$ 172,728	288.8	\$ 60,107	\$0	\$193,865	\$284,129	0	0.0
Segment 2	14,772	\$ 431,259	5,980	\$ 1,413,003	1,702.4	\$ 374,670	\$0	\$349,780	\$1,284,423	0	0.000
<b>YTD Program Total</b>	<b>32,268</b>	<b>\$ 948,041</b>	<b>12,259</b>	<b>\$ 2,896,668</b>	<b>3,617.6</b>	<b>\$ 796,573</b>	<b>\$0</b>	<b>\$544,575</b>	<b>\$2,564,867</b>	<b>0</b>	<b>-</b>

**Solar 4 All Program-to-Date Activity Report**

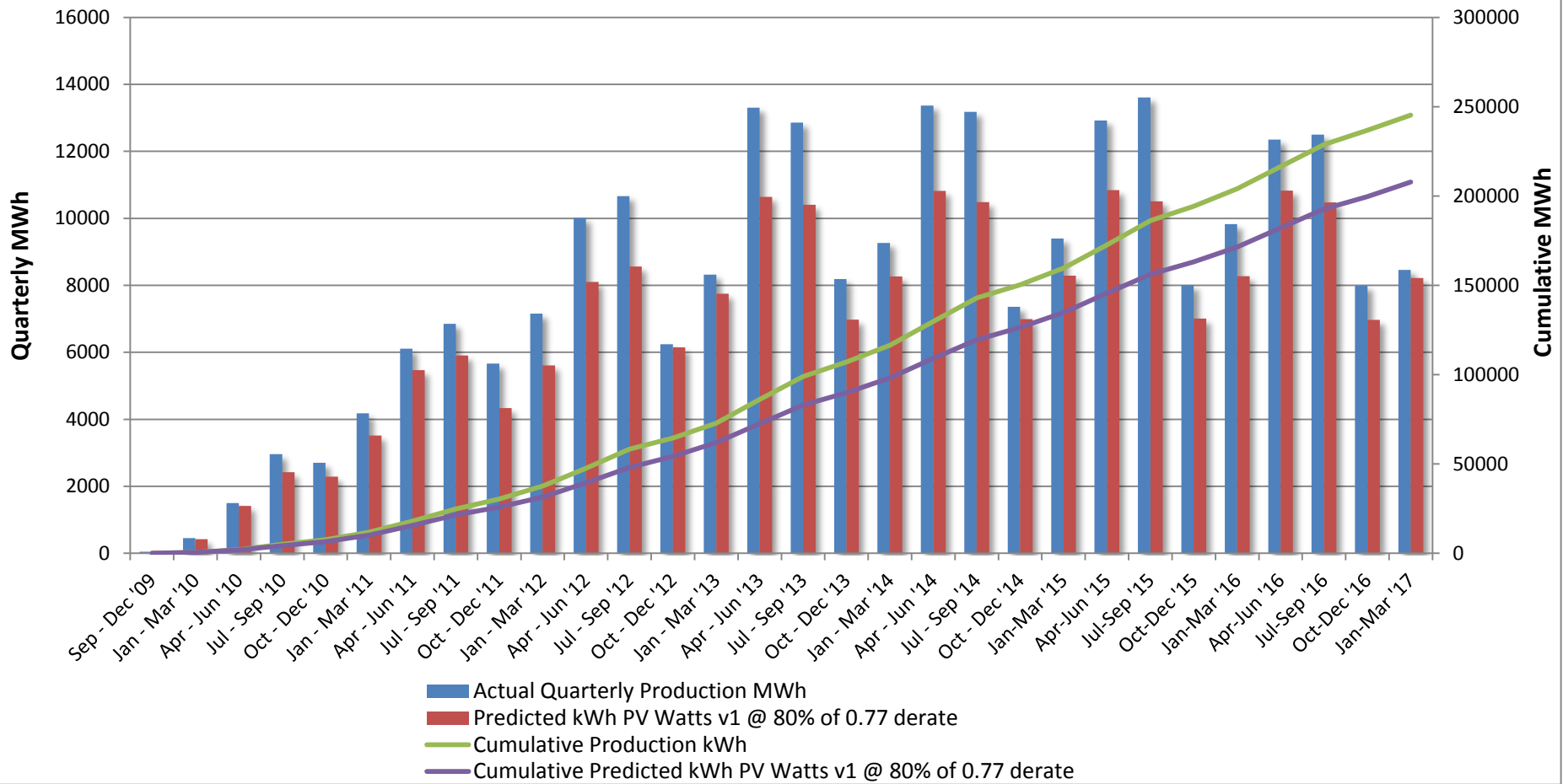
**Program-to-Date through May 2017**

Segment	Energy Produced (MWh AC)	Net Energy Sales (\$)	SREC's Sold	SREC Revenue (\$)	Capacity Sold (MW-days)	Net Capacity Sales (\$)	Business Interruption Insurance Recovery (\$)	Investment (\$)	Program Expenses (\$)	Projects Completed / Seg 2 Panels Installed	MW Installed
Segment 1a	114,091	\$4,165,412	109,495	\$23,246,597	10,051.1	\$1,386,441	\$320,277	\$90,263,462	\$5,189,281	10	16.0
Segment 1b	127,537	\$5,187,716	121,804	\$23,732,924	10,633.8	\$1,720,000	\$193,749	\$76,317,172	\$11,481,879	8	18.6
Segment 1c	39,809	\$1,402,833	37,611	\$7,941,307	3,984.0	\$478,497	\$0	\$30,533,970	\$5,004,029	6	5.4
Segment 2	214,528	\$10,113,726	221,408	\$47,827,298	21,709.1	\$3,117,444	\$0	\$277,622,507	\$17,245,999	173,462	38.3
<b>Program-to-date Total</b>	<b>495,965</b>	<b>\$20,869,688</b>	<b>490,318</b>	<b>\$102,748,126</b>	<b>46,378.0</b>	<b>\$6,702,382</b>	<b>\$514,026</b>	<b>\$474,737,112</b>	<b>\$38,921,188</b>	<b>173,486</b>	<b>78.3</b>

**Notes:**

- 1) "SREC's Sold" and "SREC Revenue" includes vintage year 2011 through 2017 SRECs
- 2) Monthly "Pole-attached Units Installed" & "Pole-attached MW Installed" are preliminary estimates and subject to change. Adjustments to prior months will be reflected in YTD values.  
Capacity specified in certain previously filed capacity reports represented gross installed capacity. The values shown in the table above account for net installed capacity (total installs minus total removals).
- 3) "Pole Attached Units Communicating" represents the *average, daily* number of panels that communicated during the month.
- 4) The columns "Energy Produced" and "SRECs Sold" do not sync because of the timing of SREC auctions, through which SRECs are sold.
- 5) Business interruption insurance recovery received for lost energy sales and SREC sales due to Superstorm Sandy

### PSE&G Pole-Attached Solar: Quarterly Performance vs. PV Watts @ 80% of 0.77





## **Total S4A Fleet Performance:**

- May weather conditions were not favorable for solar production. Actual monthly production compared to plan is -11%.

## **Seg2 (Pole Attached Solar):**

- Development of communications network continues.
- Ongoing maintenance of existing installations continues.

**REDACTED**

<b>PSE&amp;G Pole-Attached -- Summary by Municipality -- May 2017</b>		
<b>Municipality</b>	<b>Total Installed</b>	<b>Total kWdc</b>
Allentown Boro	51	10.99
Audubon Boro	477	101.77
Audubon Park Boro	41	8.26
Barrington Boro	346	74.94
Bayonne City	1,641	374.19
Belleville Twp	778	181.24
Bellmawr Boro	989	211.28
Bergenfield Boro	434	97.92
Berkeley Heights Twp	5	1.2
Beverly City	261	54.98
Bloomfield Twp	1,040	245.8
Bogota Boro	202	47.58
Bordentown City	62	13.28
Bordentown Twp	807	172.84
Bound Brook Boro	398	91.13
Branchburg Twp	23	5.52
Bridgewater Twp	1,676	376.43
Brooklawn Boro	221	46.59
Burlington City	1,225	260.22
Burlington Twp	1,207	252.3
Caldwell Boro	199	47.03
Camden City	5,397	1,173.87
Carlstadt Boro	660	154.42
Carteret Boro	1,561	335.25
Cedar Grove Twp	540	126.78
Cherry Hill Twp	3,020	645.65
Chesterfield Twp	395	85.2
Cinnaminson Twp	1,228	256.65
Clark Twp	609	135.62
Cliffside Park Boro	281	66.48
Clifton City	3,066	715.54
Collingswood Boro	681	146.53
Cranbury Twp	283	61.74
Cranford Twp	689	154.52
Cresskill Boro	2	0.44
Delanco Twp	299	62
Delran Twp	625	125.17
Deptford Twp	1,660	360.39
Dumont Boro	430	96.15
Dunellen Boro	291	65.3
East Amwell Twp	2	0.41
East Brunswick Twp	1,952	422.72
East Newark Boro	36	8.01
East Orange City	1,270	299.56
East Rutherford Boro	422	98.81
Eastampton Twp	310	64.67
Edgewater Boro	108	25.19
Edgewater Park Twp	511	105.21
Edison Twp	4,563	991.67
Elizabeth City	3,097	678.47
Elizabeth City	239	53.14

\*Latest installation date 5/30/17

\*Installs pending municipal data updates not included in total

**REDACTED**

<b>PSE&amp;G Pole-Attached -- Summary by Municipality -- May 2017</b>		
<b>Municipality</b>	<b>Total Installed</b>	<b>Total kWdc</b>
Elmwood Park Boro	734	169.02
Emerson Boro	264	58.94
Englewood City	782	180.75
Englewood Cliffs Boro	258	60.9
Essex Fells Twp	59	13.9
Evesham Twp	745	158.18
Ewing Twp	2,364	508.02
Fair Lawn Boro	1,025	228.91
Fairfield Twp Ess	1,009	236.17
Fairview Boro	253	59.04
Fanwood Boro	254	58.51
Fieldsboro Boro	64	14.17
Florence Twp	755	155.94
Fort Lee Boro	643	151.79
Franklin Twp Som	2,730	591.25
Franklin Twp Som	80	18.15
Garfield City	588	137.04
Garwood Boro	236	53.64
Glen Ridge Boro	16	3.84
Glen Rock Boro	137	30.89
Gloucester City	776	166.03
Gloucester Twp	1,682	362.4
Green Brook Twp	285	64.53
Guttenberg Town	23	5.49
Hackensack City	1,394	323.18
Haddon Heights Boro	350	77.33
Haddon Twp	897	192.36
Haddonfield Boro	156	35.14
Hainesport Twp	458	97.8
Haledon Boro	117	26.33
Hamilton Twp Mer	6,386	1,372.15
Harrison Town	261	59.45
Hasbrouck Heights	360	84.29
Haworth Boro	35	8.04
Hawthorne Boro	426	94.39
Highland Park Boro	474	105.39
Hillsborough Twp	1,609	353.79
Hillsborough Twp	0	0
Hillsdale Boro	17	4
Hillside Twp	649	142.81
Hillside Twp	3	0.62
Hi-Nella Boro	53	11.35
Hoboken City	269	63.48
Hohokus Boro	33	7.35
Hopewell Boro	72	16.91
Hopewell Twp Mer	466	103.02
Irvington Town	1,034	230.29
Jersey City	3,912	884.72
Kearny Town	0	0
Kearny Town	1,228	275.93
Kenilworth Boro	315	70.34

\*Latest installation date 5/30/17

\*Installs pending municipal data updates  
not included in total

Count of Panels by Municipality

\*Net of removals

Panel Report

Page 8 of 16

**REDACTED**

<b>PSE&amp;G Pole-Attached -- Summary by Municipality -- May 2017</b>		
<b>Municipality</b>	<b>Total Installed</b>	<b>Total kWdc</b>
Lawnside Boro	256	55.28
Lawrence Twp Mer	1,403	303.11
Leonia Boro	180	42.16
Lincoln Park Boro	5	1.15
Linden City	2,525	538.52
Little Falls Twp	413	96.34
Little Ferry Boro	433	100.05
Livingston Twp	440	104.1
Lodi Boro	619	143.62
Lumberton Twp	422	88.26
Lyndhurst Twp	865	202.64
Magnolia Boro	384	85.78
Mansfield Twp Bur	517	106.91
Manville Boro	590	133.41
Maple Shade Twp	1,189	250.33
Maplewood Twp	369	83.14
Maywood Boro	209	49.29
Medford Lakes Boro	29	6.11
Medford Twp	566	118.23
Merchantville Boro	196	42.06
Metuchen Boro	517	114.32
Middlesex Boro	910	203.95
Midland Park Boro	77	18.17
Millburn Twp	7	1.66
Millstone Boro	36	7.9
Milltown Boro	2	0.44
Monroe Twp Mid	3	0.63
Montclair Twp	722	172.13
Montgomery Twp	19	4.25
Montgomery Twp	726	159.83
Moonachie Boro	357	81.43
Moorestown Twp	1,035	220.36
Mount Ephraim Boro	339	72.04
Mount Holly Twp	535	113.24
Mount Laurel Twp	1,014	214.4
Mountainside Boro	293	67.45
National Park Boro	346	75.66
New Brunswick City	1,652	355.84
New Milford Boro	287	65.01
Newark City	7,424	1,664.90
North Arlington Boro	512	118.32
North Bergen Twp	1,208	282.33
North Brunswick Twp	1,738	380.37
North Caldwell Twp	175	40.43
North Haledon Boro	48	11.08
North Hanover Twp	0	0
North Plainfield Boro	558	125.65
Nutley Town	542	127.67
Oaklyn Boro	271	57.01
Old Tappan Boro	11	2.64
Oradell Boro	97	21.53

\*Latest installation date 5/30/17

\*Installs pending municipal data updates  
not included in total

Count of Panels by Municipality

\*Net of removals

Panel Report

Page 9 of 16

**REDACTED**

<b>PSE&amp;G Pole-Attached -- Summary by Municipality -- May 2017</b>		
<b>Municipality</b>	<b>Total Installed</b>	<b>Total kWdc</b>
Orange City	574	136.32
Palisades Park Boro	404	95.28
Palmyra Boro	410	85.63
Paramus Boro	702	158.61
Park Ridge Boro	0	0
Passaic City	1,024	238.95
Paterson City	3,150	717.57
Paulsboro Boro	6	1.24
Pemberton Twp	104	21.3
Pennington Boro	81	18.86
Pennsauken Twp	3,286	689.91
Perth Amboy City	1,473	320.26
Piscataway Twp	2,688	582.64
Plainfield City	1,564	348.84
Plainsboro Twp	225	49.37
Princeton Boro	47	10.71
Princeton Twp	119	25.94
Prospect Park Boro	108	24.22
Rahway City	1,387	312.38
Raritan Boro	278	60.92
Ridgefield Boro	345	80.55
Ridgefield Park Village	377	89.27
Ridgewood Village	135	29.55
River Edge Boro	269	60.42
River Vale Twp	11	2.44
Riverside Twp	550	114.35
Riverton Boro	110	23.76
Rochelle Park Twp	252	57.92
Rocky Hill Boro	17	3.73
Roseland Boro	138	32.84
Roselle Boro	645	142.65
Roselle Park Boro	298	68.58
Runnemede Boro	556	120.53
Rutherford Boro	204	45.44
Saddle Brook Twp	7	1.63
Saddle Brook Twp	300	68.33
Saddle River Boro	9	2.16
Scotch Plains Twp	650	148.14
Secaucus Town	980	228.5
Somerdale Boro	373	80.61
Somerville Boro	694	151.84
South Bound Brook Boro	197	43.4
South Brunswick Twp	1,348	293.05
South Brunswick Twp	460	99.23
South Hackensack Twp	211	49.09
South Orange Village Twp	94	22.29
South Plainfield Boro	2,150	472.45
Southampton Twp	780	163.26
Springfield Twp Bur	457	95.29
Springfield Twp Uni	27	6.18
Tavistock Boro	1	0.22

\*Latest installation date 5/30/17

\*Installs pending municipal data updates  
not included in total

**REDACTED**

<b>PSE&amp;G Pole-Attached -- Summary by Municipality -- May 2017</b>		
<b>Municipality</b>	<b>Total Installed</b>	<b>Total kWdc</b>
Teaneck Twp	709	163.57
Tenafly Boro	301	68.93
Teterboro Boro	161	37.5
Totowa Boro	716	163.92
Trenton City	4,615	1001.96
Union City	24	5.57
Union Twp Uni	2,027	449.36
Upper Freehold Twp	76	16.27
Verona Boro	183	43.68
Voorhees Twp	316	67.51
Waldwick Boro	158	35.38
Wallington Boro	269	62.79
Wallington Boro	5	1.17
Warren Twp	51	10.89
Washington Twp Ber	86	19.41
Washington Twp Glo	36	7.78
Washington Twp Mer	350	74.63
Watchung Boro	325	72.36
Wayne Twp	1,285	294.16
Weehawken Twp	3	0.72
West Caldwell Twp	506	119.58
West Deptford Twp	1	0.2
West Deptford Twp	1,657	356.99
West New York Town	30	6.8
West Orange Twp	1,030	241.15
West Paterson Boro	301	69.43
West Windsor Twp	657	143.66
Westampton Twp	425	89.12
Westfield Town	1,140	266.41
Westville Boro	515	109.48
Westwood Boro	216	47.86
Willingboro Twp	721	144.81
Winfield Twp	15	3.07
Woodbridge Twp	5,636	1,224.35
Woodbury City	897	195.26
Woodbury Heights Boro	270	58.64
Woodcliff Lake Boro	66	15.56
Woodlynne Boro	145	30.53
Wood-Ridge Boro	346	81.49
Wyckoff Twp	47	10.53
	<b>172,709</b>	<b>38,159</b>

\*Latest installation date 5/30/17

\*Installs pending municipal data updates not included in total

**PSE&G Pole-Attached -- Count of Aggregators by Municipality -- May 2017**

<b>Municipality</b>	<b>Count of Aggregators Installed through May 2017</b>
Allentown Boro	3
Audubon Boro	7
Barrington Boro	7
Bayonne City	23
Belleville Twp	13
Bellmawr Boro	19
Bergenfield Boro	6
Beverly City	3
Bloomfield Twp	17
Bogota Boro	3
Bordentown City	1
Bordentown Twp	15
Bound Brook Boro	6
Branchburg Twp	1
Bridgewater Twp	47
Brooklawn Boro	6
Burlington City	17
Burlington Twp	17
Caldwell Boro	3
Camden City	66
Carlstadt Boro	12
Carteret Boro	20
Cedar Grove Twp	8
Cherry Hill Twp	69
Chesterfield Twp	16
Cinnaminson Twp	19
Clark Twp	11
Cliffside Park Boro	3
Clifton City	42
Collingswood Boro	10
Cranbury Twp	7
Cranford Twp	11
Delanco Twp	3
Delran Twp	10
Deptford Twp	33
Dumont Boro	6
Dunellen Boro	4
East Brunswick Twp	36
East Newark Boro	1
East Orange City	16
East Rutherford Boro	6
Eastampton Twp	6
Edgewater Boro	5
Edgewater Park Twp	7
Edison Twp	80
Elizabeth City	45
Elmwood Park Boro	12
Emerson Boro	7
Englewood City	17

**PSE&G Pole-Attached -- Count of Aggregators by Municipality -- May 2017**

<b>Municipality</b>	<b>Count of Aggregators Installed through May 2017</b>
Englewood Cliffs Boro	5
Essex Fells Twp	2
Evesham Twp	14
Ewing Twp	35
Fair Lawn Boro	17
Fairfield Twp Ess	18
Fairview Boro	5
Fanwood Boro	5
Fieldsboro Boro	1
Florence Twp	12
Fort Lee Boro	11
Franklin Twp Som	67
Garfield City	10
Garwood Boro	3
Glen Rock Boro	7
Gloucester City	10
Gloucester Twp	22
Green Brook Twp	7
Guttenberg Town	1
Hackensack City	24
Haddon Heights Boro	4
Haddon Twp	13
Haddonfield Boro	9
Hainesport Twp	3
Haledon Boro	1
Hamilton Twp Mer	89
Harrison Town	6
Hasbrouck Heights	4
Haworth Boro	1
Hawthorne Boro	10
Highland Park Boro	9
Hillsborough Twp	40
Hillsdale Boro	2
Hillside Twp	11
Hi-Nella Boro	1
Hoboken City	6
Hohokus Boro	3
Hopewell Boro	1
Hopewell Twp Mer	28
Irvington Town	17
Jersey City	61
Kearny Town	17
Kenilworth Boro	5
Lawnside Boro	4
Lawrence Twp Mer	34
Leonia Boro	2
Linden City	36
Little Falls Twp	11
Little Ferry Boro	7



**PSE&G Pole-Attached -- Count of Aggregators by Municipality -- May 2017**

<b>Municipality</b>	<b>Count of Aggregators Installed through May 2017</b>
Livingston Twp	25
Lodi Boro	11
Lumberton Twp	11
Lyndhurst Twp	12
Magnolia Boro	5
Mansfield Twp Bur	15
Manville Boro	9
Maple Shade Twp	12
Maplewood Twp	5
Maywood Boro	7
Medford Lakes Boro	3
Medford Twp	25
Merchantville Boro	1
Metuchen Boro	10
Middlesex Boro	9
Midland Park Boro	7
Millstone Boro	1
Montclair Twp	18
Montgomery Twp	36
Moonachie Boro	5
Moorestown Twp	20
Mount Ephraim Boro	4
Mount Holly Twp	9
Mount Laurel Twp	27
Mountainside Boro	8
National Park Boro	6
New Brunswick City	24
New Milford Boro	5
Newark City	112
North Arlington Boro	9
North Bergen Twp	23
North Brunswick Twp	26
North Caldwell Twp	9
North Haledon Boro	3
North Plainfield Boro	7
Nutley Town	9
Oaklyn Boro	4
Old Tappan Boro	1
Oradell Boro	3
Orange City	9
Palisades Park Boro	6
Palmyra Boro	7
Paramus Boro	24
Passaic City	17
Paterson City	48
Pemberton Twp	6
Pennington Boro	4
Pennsauken Twp	51
Perth Amboy City	25

**PSE&G Pole-Attached -- Count of Aggregators by Municipality -- May 2017**

<b>Municipality</b>	<b>Count of Aggregators Installed through May 2017</b>
Piscataway Twp	55
Plainfield City	26
Plainsboro Twp	10
Princeton Boro	7
Princeton Twp	16
Prospect Park Boro	1
Rahway City	17
Raritan Boro	5
Ridgefield Boro	4
Ridgefield Park Village	5
Ridgewood Village	9
River Edge Boro	5
River Vale Twp	1
Riverside Twp	5
Riverton Boro	3
Rochelle Park Twp	5
Rocky Hill Boro	4
Roseland Boro	10
Roselle Boro	11
Roselle Park Boro	5
Runnemede Boro	8
Rutherford Boro	8
Saddle Brook Twp	7
Scotch Plains Twp	14
Secaucus Town	18
Somerdale Boro	6
Somerville Boro	8
South Bound Brook Boro	2
South Brunswick Twp	46
South Hackensack Twp	2
South Orange Village Twp	5
South Plainfield Boro	42
Southampton Twp	23
Springfield Twp Bur	12
Teaneck Twp	17
Tenafly Boro	12
Teterboro Boro	3
Totowa Boro	12
Trenton City	56
Undefined Municipality	1
Union City	2
Union Twp Uni	27
Upper Freehold Twp	2
Verona Boro	3
Voorhees Twp	8
Waldwick Boro	10
Wallington Boro	2
Warren Twp	5
Washington Twp Ber	6

**PSE&G Pole-Attached -- Count of Aggregators by Municipality -- May 2017**

<b>Municipality</b>	<b>Count of Aggregators Installed through May 2017</b>
Washington Twp Glo	1
Washington Twp Mer	6
Watchung Boro	13
Wayne Twp	54
West Caldwell Twp	8
West Deptford Twp	29
West New York Town	3
West Orange Twp	27
West Paterson Boro	9
West Windsor Twp	23
Westampton Twp	10
Westfield Town	26
Westville Boro	5
Westwood Boro	5
Willingboro Twp	16
Woodbridge Twp	90
Woodbury City	13
Woodbury Heights Boro	3
Woodcliff Lake Boro	4
Woodlynne Boro	2
Wood-Ridge Boro	4
Wyckoff Twp	5
<b>Grand Totals:</b>	<b>3,173</b>