

**Solar 4 All Monthly Activity Report - December 2018**

Site	Property Owner	Cost per Project (\$k)	NPV of 20 Year Lease Cost (\$k)	EPC Contractor	Site Location Address
<b>Segment 1a</b>					
Linden	PSE&G		N/A	ASP	South Wood Avenue, Linden, NJ 07036
Yardville	PSE&G		N/A	ACE	Broad Street, Hamilton, NJ 08611
Silver Lake	PSE&G		N/A	JFC	410 Silver Lake Avenue, Edison, NJ 08817
Trenton	PSE&G		N/A	SunEdison	500-520 Brunswick Avenue, Trenton, NJ 08638
Central HQ	PSE&G		N/A	Solis (Solyndra)	472 Weston Canal Road, Franklin, NJ 08873
Edison Training	PSE&G		N/A	Henkle & McCoy	234 Pierson Avenue, Edison, NJ 08837
Thorofare	PSE&G		N/A	SunEdison	Jessup Road, Thorofare, NJ 08086
Hackensack	PSE&G		N/A	JFC	194-210 South River Street, Hackensack NJ 07601
Metro/Clifton	PSE&G		N/A	Gloria Solar	150 Circle Ave, Clifton, NJ 07011
S. DivHQ Moorestown	PSE&G		N/A	Vanguard	360 New Albany Road, Moorestown, NJ
<b>Segment 1b</b>					
CPP Bayonne	CenterPoint Properties		\$1,402	ASP	30-100 Pulaski Street, Bayonne, NJ 07002
Matrix - Stults Rd	Matrix Development Group		\$2,228	Pro-Tech	45 Stults Rd, South Brunswick, NJ 08810
Rider	Rider University		\$642	Alteris	2083 Lawrenceville Road, Lawrenceville, NJ 08648
NJMC / Kearny Landfill	NJ Meadowland Commission		\$2,561	Sundurance	932 Bellville Turnpike, Kearny, Hudson County NJ 07032
Mill Creek	Judith Tucci		\$3,189	Juwi	600 Irick Road, Westampton, NJ 08060
Food Bank	Community Food Bank of NJ		\$772	Mercury	31 Evans Terminal, Hillside, NJ 07250
Raritan Center	Summit Associates Inc.		\$1,729	ASP	45 Fernwood Avenue and 110 Fieldcrest Avenue, Edison, NJ 08818
BlackRock-Matrix	Granite South Brunswick, LLC		\$1,800	Pro-Tech	140 Docks Corner Road, South Brunswick, NJ 08810
<b>Segment 1c</b>					
Matrix Bldg A & B	Matrix Development		\$2,191	enXco	1000 & 1050 Amboy Ave, Perth Amboy, NJ 08861
Barringer	Newark Public Schools		\$635	Mercury	90 Parker St, Newark, NJ 07104
Park	Newark Public Schools		\$482	Mercury	120 Manchester Place, Newark, NJ 07104-1704
Camden (NWK)	Newark Public Schools		\$971	ALM	281 & 321 Camden Street Newark, New Jersey 07103
New Central HS	Newark Public Schools		\$495	LB Electric	246 18th Ave, Newark, NJ 07108
<b>Segment 2</b>					
Pole-Attached	PSE&G		N/A	Riggs-Distler	Various

Notes:

"Cost per Project" corresponds to projects that have been placed in service.

"NPV of 20 Year Lease Cost" is derived using an annual discount rate of 5.07%

Regarding Segment 2 (Pole-attached): Riggs Distler is the installation contractor, not an EPC contractor

"Cost per Project" includes AFUDC

**Solar 4 All Monthly Activity Report - December 2018**

Site	Owner location	Type of customer	Status of the installation	Capacity of Project (MW-DC)
<b>Segment 1a</b>				
Linden	80 Park Plaza, Newark, NJ 07102	Utility	Commercial Operation	3.20
Yardville	80 Park Plaza, Newark, NJ 07102	Utility	Commercial Operation	4.30
Silver Lake	80 Park Plaza, Newark, NJ 07102	Utility	Commercial Operation	2.02
Trenton	80 Park Plaza, Newark, NJ 07102	Utility	Commercial Operation	1.26
Central HQ	80 Park Plaza, Newark, NJ 07102	Utility	Commercial Operation	0.92
Edison Training	80 Park Plaza, Newark, NJ 07102	Utility	Commercial Operation	0.71
Thorofare	80 Park Plaza, Newark, NJ 07102	Utility	Commercial Operation	0.72
Hackensack	80 Park Plaza, Newark, NJ 07102	Utility	Commercial Operation	1.05
Metro/Clifton	80 Park Plaza, Newark, NJ 07102	Utility	Commercial Operation	0.73
S. DivHQ Moorestown	80 Park Plaza, Newark, NJ 07102	Utility	Commercial Operation	1.07
<b>Segment 1b</b>				
CPP Bayonne	1808 Swift Drive, Oak Brook, IL 60523-1501	Warehouse	Commercial Operation	1.75
Matrix - Stults Rd	Forsgate Drive CN 4000, Cranbury, NJ 08512	Warehouse	Commercial Operation	2.98
Rider	2083 Lawrenceville Road, Lawrenceville, NJ 08548	University	Commercial Operation	0.74
NJMC / Kearny Landfill	One DeKorte Park Plaza, Lyndhurst, NJ 07071	Landfill	Commercial Operation	3.00
Mill Creek	4 St. Albans Place, Haworth, NJ 07641	Private Landowner	Commercial Operation	3.82
Food Bank	31 Evans Terminal Rd, Hillside, New Jersey 07250	Warehouse	Commercial Operation	1.07
Raritan Center	Raritan Plaza I, Edison, NJ 08818	Warehouse	Commercial Operation	2.22
BlackRock-Matrix	BlackRock, 40 E. 52nd Street, New York, NY 10022	Warehouse	Commercial Operation	2.97
<b>Segment 1c</b>				
Matrix Bldg A & B	Forsgate Drive CN 4000, Cranbury, NJ 08512	Warehouse	Commercial Operation	2.86
Barringer	Newark Public Schools, 2 Cedar Street, Newark NJ 07102-3051	Public Schools	Commercial Operation	0.65
Park	Newark Public Schools, 2 Cedar Street, Newark NJ 07102-3051	Public Schools	Commercial Operation	0.51
Camden (NWK)	Newark Public Schools, 2 Cedar Street, Newark NJ 07102-3051	Public Schools	Commercial Operation	0.91
New Central HS	Newark Public Schools, 2 Cedar Street, Newark NJ 07102-3051	Public Schools	Commercial Operation	0.50
<b>Segment 2</b>				
Pole-Attached	80 Park Plaza, Newark, NJ 07102	Utility	Comm Op / Ongoing Construc	37.79

**Solar 4 All Monthly Activity Report - December 2018**

Site	Equipment installed (Inverters; Panels)
<b>Segment 1a</b>	
Linden	Six Sunny Central SC500-HE-US inverters; 7,766 Suntech STP280-24/Vd, 3,718 STP275-24/Vd panels
Yardville	Eight Advanced Energy Solaron 3159500-0001A2 inverters, one Solaron 250 inverters; 5,640 Suntech STP270-24/VD, 4,368 STP275-24/VD, 1,512 STP280-24/VD panels
Silver Lake	Three SMA Sunny Central SC 500U, one SC 250U inverters; 3,514 Sharp ND-224UC1, 5,236 ND-U235F1
Trenton	Three Satcon PowerGate Plus PVS-500 inverters; 5,496 Yingli Solar YL230b-29b panels
Central HQ	One Satcon PowerGate Plus PVS-135, one PVS-250, one PVS-375 inverters; 4,180 Solyndra SL-001-182U, 648 Solar World SW240MONO panels
Edison Training	One Satcon PowerGate Plus PVS-500, one PVS-135 inverters; 3,164 Gloria Solar GSM6-225D-E1 panels
Thorofare	One Advanced Energy Solaron-500kW, one Solaron-250kW inverters; 2,618 SunTech STP275-24Vd panels
Hackensack	Two Advanced Energy Solaron-500kW, 4,472 MX Solar MX-60-235 panels
Metro/Clifton	Four Satcon Powergate Plus PVS-75, two PVS-135 inverters; 3,122 Gloria Solar GSM6-235D-E1 panels
S. DivHQ Moorestown	Three Advanced Energy PVP 260 Inverters; one PVP 100 and one PVP 50 Inverter. 4,563 MX60-235 panels
<b>Segment 1b</b>	
CPP Bayonne	Three SMA SC500U inverters; 7,938 Trina Solar TSM-220PA05 panels
Matrix - Stults Rd	Five Solaron 3159500-1001AD inverters; 12,684 Kyocera K0235GX-LPB panels
Rider	Two AEI inverters; 2,640 Suntech STP-280 panels
NJMC / Kearny Landfill	Seven Advanced Energy Solaron inverters 2x500kW, 3x333kW, 2x250kW; 12,506 Kyocera KD240GX-LFB panels
Mill Creek	Seven SMA America SC500U inverters; 29,400 Solar Frontier SF-130-L panels
Food Bank	Two Advanced Energy Solaron 500kW inverters; 4,667 Trina Solar TSM-230PA05 panels
Raritan Center	Four SMA Sunny Central 600US, One SMA SB8000US inverters; 7,098 Hyundai HIS-M230SG, 2,604 HIS-M227SG panels
BlackRock-Matrix	Five AE Solaron 3159000-1001AJ inverters; 12,376 Upsolar UP-M240P panels
<b>Segment 1c</b>	
Matrix Bldg A & B	Five SMA SC500U inverters; 10,395 Suntech STP275-24VD panels
Barringer	Two Satcon PowerGate Plus PVS-250, one PVS-135 inverters; 2,310 Suntech STP280-24VB-1 panels
Park	One Satcon PowerGate Plus PVS-375, one PVS-100, one PVS-75 inverters; 1,440 Sunpower PL-SUN-SPR-305-U, 264 Suntech STP270-24/VB-1 panels
Camden (NWK)	One Solaron 3159000-1000 A1, one Solaron 3159000-1000 A1; 3,264 ET Solar ET-P672280 panels
New Central HS	Two Satcon PowerGate Plus PVS-100, three Satcon Solstice SDMSO100480-LNIU inverters; 1,857 Suntech STP270-24/VB-1 panels
<b>Segment 2</b>	
Pole-Attached	Suntech STP200-18/UB-1, STP205-18/UD, STP210-18/UB-1, STP215-20/WD, STP220-20/WD, STP225-20/WD, Trina Solar TSM-220PA05, TSM-225PA05, TSM-235PA05, TSM-240PA05

**Solar 4 All Monthly Activity Report - December 2018**

**December 2018 Monthly Update**

Segment	Energy Produced (MWh AC)	Net Energy Sales (\$)	SRECs Sold	SREC Revenue (\$)	Capacity Sold (MW-days)	Net Capacity Sales (\$)	Business Interruption Insurance Recovery (\$)	Investment (\$)	Program Expenses (\$)	Projects Completed / Seg 2 Panels Installed	MW Installed	Pole-attached Units Communicating
Segment 1a	772	\$ 24,150	2,552	\$ 558,888	148.8	\$ 30,526	\$0	\$27,721	\$93,668	0	0.0	
Segment 1b	895	\$ 29,161	2,820	\$ 617,580	176.7	\$ 36,971	\$0	(\$63,024)	\$745,225	0	0.0	
Segment 1c	208	\$ 6,524	775	\$ 169,725	55.8	\$ 11,213	\$0	(\$106,697)	\$286,615	0	0.0	
Segment 2	1,793	\$ 56,124	4,768	\$ 1,044,192	331.7	\$ 69,898	\$0	\$63,985	\$213,640	0	0.000	157,929
<b>Program Total</b>	<b>3,668</b>	<b>\$ 115,959</b>	<b>10,915</b>	<b>\$ 2,390,385</b>	<b>713.0</b>	<b>\$ 148,607</b>	<b>\$0</b>	<b>(\$78,015)</b>	<b>\$1,339,148</b>	<b>0</b>	<b>0.000</b>	

**Solar 4 All Year-to-Date Activity Report**

**Year-to-Date Update through December 2018**

Segment	Energy Produced (MWh AC)	Net Energy Sales (\$)	SRECs Sold	SREC Revenue (\$)	Capacity Sold (MW-days)	Net Capacity Sales (\$)	Business Interruption Insurance Recovery (\$)	Investment (\$)	Program Expenses (\$)	Projects Completed / Seg 2 Panels Installed	MW Installed
Segment 1a	17,838	\$ 637,428	17,803	\$ 4,014,106	1,752.0	\$ 362,178	\$0	\$706,144	\$709,163	0	0.0
Segment 1b	20,542	\$ 757,909	20,878	\$ 4,708,479	2,080.5	\$ 438,646	\$0	\$2,674,239	\$4,192,754	0	0.0
Segment 1c	5,046	\$ 181,306	4,935	\$ 1,114,441	657.0	\$ 133,045	\$0	\$2,441,387	\$986,179	0	0.0
Segment 2	34,283	\$ 1,230,164	34,490	\$ 7,815,396	3,935.7	\$ 829,321	\$0	\$331,860	\$3,507,912	0	0.000
<b>YTD Program Total</b>	<b>77,709</b>	<b>\$ 2,806,806</b>	<b>78,106</b>	<b>\$ 17,652,421</b>	<b>8,425.2</b>	<b>\$ 1,763,190</b>	<b>\$0</b>	<b>\$6,153,630</b>	<b>\$9,396,008</b>	<b>0</b>	<b>0</b>

**Solar 4 All Program-to-Date Activity Report**

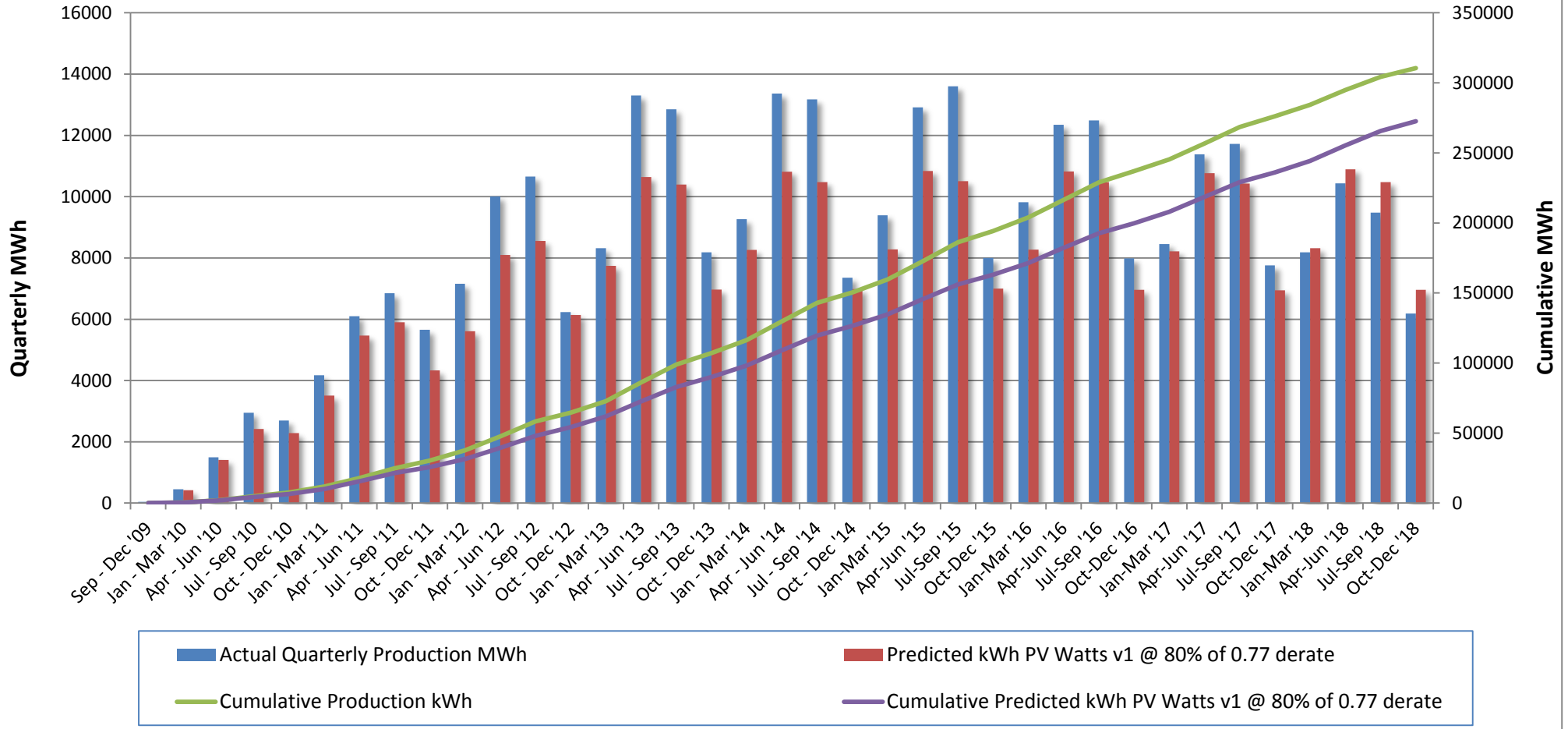
**Program-to-Date through December 2018**

Segment	Energy Produced (MWh AC)	Net Energy Sales (\$)	SRECs Sold	SREC Revenue (\$)	Capacity Sold (MW-days)	Net Capacity Sales (\$)	Business Interruption Insurance Recovery (\$)	Investment (\$)	Program Expenses (\$)	Projects Completed / Seg 2 Panels Installed	MW Installed
Segment 1a	142,949	\$5,177,788	143,736	\$30,850,321	12,830.3	\$1,963,398	\$320,277	\$90,971,306	\$6,274,486	10	16.0
Segment 1b	160,723	\$6,389,455	161,406	\$32,531,401	13,934.1	\$2,418,771	\$457,127	\$78,991,410	\$16,676,510	8	18.6
Segment 1c	48,115	\$1,695,963	47,540	\$10,147,327	5,020.1	\$690,440	\$0	\$33,445,585	\$6,060,349	6	5.4
Segment 2	268,361	\$12,021,207	286,160	\$62,329,499	27,797.3	\$4,433,466	\$0	\$277,939,916	\$23,353,989	170,459	37.8
<b>Program-to-date Total</b>	<b>620,147</b>	<b>\$25,284,413</b>	<b>638,842</b>	<b>\$135,858,548</b>	<b>59,581.8</b>	<b>\$9,506,075</b>	<b>\$777,404</b>	<b>\$481,348,217</b>	<b>\$52,365,334</b>	<b>170,483</b>	<b>77.8</b>

**Notes:**

- 1) "SREC's Sold" and "SREC Revenue" includes vintage year 2011 through 2019 SRECs
- 2) Monthly "Pole-attached Units Installed" & "Pole-attached MW Installed" are preliminary estimates and subject to change. Adjustments to prior months will be reflected in YTD values. Capacity specified in certain previously filed capacity reports represented gross installed capacity. The values shown in the table above account for net installed capacity (total installs minus total removals).
- 3) "Pole Attached Units Communicating" represents the *average, daily* number of panels that communicated during the month.
- 4) The columns "Energy Produced" and "SRECs Sold" do not sync because of the timing of SREC auctions, through which SRECs are sold.
- 5) Business interruption insurance recovery received for lost energy sales and SREC sales due to Superstorm Sandy

### PSE&G Pole-Attached Solar: Quarterly Performance vs. PV Watts @ 80% of 0.77



## **Total S4A Fleet Performance:**

- December weather conditions were unfavorable for solar production. Actual monthly production compared to plan is -8%.

## **Seg2 (Pole Attached Solar):**

- Development of communications network continues.
- Ongoing maintenance of existing installations continues.

**REDACTED**

<b>PSE&amp;G Pole-Attached -- Summary by Municipality -- December 2018</b>		
<b>Municipality</b>	<b>Total Installed</b>	<b>Total kWdc</b>
Allentown Boro	51	10.99
Audubon Boro	470	100.58
Audubon Park Boro	41	8.54
Barrington Boro	346	75.01
Bayonne City	1,615	368.27
Belleville Twp	772	179.86
Bellmawr Boro	970	209.09
Bergenfield Boro	431	97.21
Berkeley Heights Twp	5	1.2
Beverly City	260	54.78
Bloomfield Twp	1,029	243.28
Bogota Boro	198	46.63
Bordentown City	62	13.28
Bordentown Twp	822	176.72
Bound Brook Boro	384	87.88
Branchburg Twp	23	5.52
Bridgewater Twp	1,638	368.22
Brooklawn Boro	216	45.53
Burlington City	1,205	255.86
Burlington Twp	1,196	250.41
Caldwell Boro	196	46.33
Camden City	5,235	1,141.97
Carlstadt Boro	654	152.98
Carteret Boro	1,564	336.77
Cedar Grove Twp	514	120.77
Cherry Hill Twp	2,952	631.87
Chesterfield Twp	390	84.08
Cinnaminson Twp	1,204	252.72
Clark Twp	605	135.5
Cliffside Park Boro	278	65.78
Clifton City	3,034	708.11
Collingswood Boro	666	143.31
Cranbury Twp	259	56.73
Cranford Twp	682	153.01
Cresskill Boro	2	0.44
Delanco Twp	299	62.04
Delran Twp	587	122.59
Deptford Twp	1,639	356.15
Dumont Boro	428	95.87
Dunellen Boro	278	62.62
East Amwell Twp	2	0.41
East Brunswick Twp	1,947	426.73
East Newark Boro	36	8.01
East Orange City	1,222	288.23
East Rutherford Boro	428	100.25
Eastampton Twp	304	63.48
Edgewater Boro	107	24.95
Edgewater Park Twp	505	104.2
Edison Twp	4,478	978.01
Elizabeth City	3,048	668.56
Elizabeth City	245	54.53

\*Latest installation date 12/27/18

\*Installs pending municipal data updates  
not included in total

**REDACTED**

<b>PSE&amp;G Pole-Attached -- Summary by Municipality -- December 2018</b>		
<b>Municipality</b>	<b>Total Installed</b>	<b>Total kWdc</b>
Elmwood Park Boro	725	166.99
Emerson Boro	261	58.29
Englewood City	772	178.43
Englewood Cliffs Boro	254	60.19
Essex Fells Twp	58	13.66
Evesham Twp	734	155.99
Ewing Twp	2,329	501.47
Fair Lawn Boro	1,024	228.71
Fairfield Twp Ess	997	233.38
Fairview Boro	247	57.68
Fanwood Boro	249	57.42
Fieldsboro Boro	63	13.96
Florence Twp	878	185.81
Fort Lee Boro	638	150.46
Franklin Twp Som	2,714	588.89
Franklin Twp Som	80	18.15
Garfield City	586	136.57
Garwood Boro	232	52.79
Glen Ridge Boro	13	3.12
Glen Rock Boro	135	30.42
Gloucester City	769	165.08
Gloucester Twp	1,669	359.9
Green Brook Twp	277	62.75
Guttenberg Town	21	5.01
Hackensack City	1,370	317.49
Haddon Heights Boro	346	76.4
Haddon Twp	873	187.5
Haddonfield Boro	154	34.66
Hainesport Twp	456	97.44
Haledon Boro	117	26.33
Hamilton Twp Mer	6,334	1,365.35
Harrison Town	237	54.05
Hasbrouck Heights	359	84.04
Haworth Boro	35	8.04
Hawthorne Boro	421	93.31
Highland Park Boro	471	104.74
Hillsborough Twp	1,555	342.47
Hillsborough Twp	0	0
Hillsdale Boro	13	3.06
Hillside Twp	618	136.12
Hillside Twp	3	0.62
Hi-Nella Boro	50	10.72
Hoboken City	264	62.32
Hohokus Boro	33	7.35
Hopewell Boro	72	16.91
Hopewell Twp Mer	461	101.85
Irvington Town	1,023	227.98
Jersey City	3,806	866.14
Kearny Town	0	0
Kearny Town	1,200	269.75
Kenilworth Boro	310	69.33

\*Latest installation date 12/27/18

\*Installs pending municipal data updates  
not included in total



**REDACTED**

<b>PSE&amp;G Pole-Attached -- Summary by Municipality -- December 2018</b>		
<b>Municipality</b>	<b>Total Installed</b>	<b>Total kWdc</b>
Lawnside Boro	249	53.72
Lawrence Twp Mer	1,393	301.46
Leonia Boro	178	41.7
Lincoln Park Boro	5	1.17
Linden City	2,343	502.07
Little Falls Twp	408	95.17
Little Ferry Boro	437	100.91
Livingston Twp	2	0.46
Livingston Twp	430	101.78
Lodi Boro	606	140.71
Lumberton Twp	419	87.72
Lyndhurst Twp	851	199.41
Magnolia Boro	373	83.35
Mansfield Twp Bur	526	109.26
Manville Boro	583	131.79
Maple Shade Twp	1179	248.42
Maplewood Twp	364	82.04
Maywood Boro	209	49.29
Medford Lakes Boro	29	6.11
Medford Twp	561	117.28
Merchantville Boro	194	41.63
Metuchen Boro	527	116.88
Middlesex Boro	891	199.99
Midland Park Boro	76	17.93
Millburn Twp	7	1.66
Millstone Boro	36	7.9
Milltown Boro	2	0.44
Monroe Twp Mid	3	0.63
Montclair Twp	709	169.03
Montgomery Twp	19	4.25
Montgomery Twp	720	158.56
Moonachie Boro	351	80.03
Moorestown Twp	1028	219.64
Mount Ephraim Boro	337	71.74
Mount Holly Twp	511	108.25
Mount Laurel Twp	996	210.63
Mountainside Boro	289	66.5
National Park Boro	344	75.22
New Brunswick City	1618	348.83
New Milford Boro	292	66.31
Newark City	7370	1654.16
North Arlington Boro	506	116.93
North Bergen Twp	1,186	277.46
North Brunswick Twp	1666	365.42
North Caldwell Twp	177	40.92
North Haledon Boro	48	11.08
North Hanover Twp	0	0
North Plainfield Boro	544	122.62
Nutley Town	538	126.74
Oaklyn Boro	269	56.85
Old Tappan Boro	11	2.64

\*Latest installation date 12/27/18

\*Installs pending municipal data updates  
not included in total

**REDACTED**

<b>PSE&amp;G Pole-Attached -- Summary by Municipality -- December 2018</b>		
<b>Municipality</b>	<b>Total Installed</b>	<b>Total kWdc</b>
Oradell Boro	95	21.08
Orange City	563	133.75
Palisades Park Boro	401	94.56
Palmyra Boro	406	84.82
Paramus Boro	689	155.98
Park Ridge Boro	0	0
Passaic City	1,014	236.68
Paterson City	3114	709.55
Paulsboro Boro	6	1.24
Pemberton Twp	95	19.77
Pennington Boro	80	18.62
Pennsauken Twp	3,242	681.82
Perth Amboy City	1,453	316.44
Piscataway Twp	2,635	572.86
Plainfield City	1529	341.68
Plainsboro Twp	222	48.73
Princeton Boro	46	10.47
Princeton Twp	119	25.97
Prospect Park Boro	108	24.22
Rahway City	1370	309.11
Raritan Boro	277	60.76
Ridgefield Boro	343	80.08
Ridgefield Park Village	377	89.27
Ridgewood Village	133	30.06
River Edge Boro	266	60.93
River Vale Twp	11	2.44
Riverside Twp	546	113.66
Riverton Boro	108	23.38
Rochelle Park Twp	251	57.68
Rocky Hill Boro	17	3.73
Roseland Boro	138	32.84
Roselle Boro	629	139.76
Roselle Park Boro	298	68.59
Runnemede Boro	549	119.22
Rutherford Boro	200	44.51
Saddle Brook Twp	7	1.63
Saddle Brook Twp	292	66.54
Saddle River Boro	9	2.16
Scotch Plains Twp	641	146.24
Secaucus Town	963	224.54
Somerdale Boro	368	79.72
Somerville Boro	681	149.15
South Bound Brook Boro	195	43.02
South Brunswick Twp	1305	283.93
South Brunswick Twp	456	98.37
South Hackensack Twp	204	47.44
South Orange Village Twp	93	22.09
South Plainfield Boro	2138	472.93
Southampton Twp	776	162.89
Springfield Twp Bur	430	89.84
Springfield Twp Uni	27	6.18

\*Latest installation date 12/27/18

\*Installs pending municipal data updates  
not included in total

**REDACTED**

<b>PSE&amp;G Pole-Attached -- Summary by Municipality -- December 2018</b>		
<b>Municipality</b>	<b>Total Installed</b>	<b>Total kWdc</b>
Tavistock Boro	1	0.22
Teaneck Twp	703	162.12
Tenafly Boro	299	68.47
Teterboro Boro	153	35.87
Totowa Boro	705	161.44
Trenton City	4534	989.29
Union City	24	5.57
Union Twp Uni	1978	439.17
Upper Freehold Twp	75	16.06
Verona Boro	178	42.49
Voorhees Twp	306	67.07
Waldwick Boro	154	34.49
Wallington Boro	265	61.88
Wallington Boro	5	1.17
Warren Twp	51	10.9
Washington Twp Ber	85	19.18
Washington Twp Glo	36	7.76
Washington Twp Mer	344	73.5
Watchung Boro	311	69.24
Wayne Twp	1282	293.54
Weehawken Twp	3	0.72
West Caldwell Twp	506	119.59
West Deptford Twp	1	0.2
West Deptford Twp	1642	353.77
West New York Town	30	6.8
West Orange Twp	1016	237.95
West Paterson Boro	300	69.21
West Windsor Twp	654	143.06
Westampton Twp	422	88.57
Westfield Town	1121	262
Westville Boro	509	108.31
Westwood Boro	214	47.41
Willingboro Twp	707	146.21
Winfield Twp	15	3.07
Woodbridge Twp	5561	1213
Woodbury City	887	193.16
Woodbury Heights Boro	268	58.17
Woodcliff Lake Boro	66	15.56
Woodlynne Boro	145	30.53
Wood-Ridge Boro	345	81.26
Wyckoff Twp	46	11
<b>TOTAL</b>	<b>170,100</b>	<b>37,669</b>

\*Latest installation date 12/27/18

\*Installs pending municipal data updates  
not included in total

**PSE&G Pole-Attached -- Count of Aggregators by Municipality -- December 2018**

<b>Municipality</b>	<b>Count of Aggregators Installed through December 2018</b>
Allentown Boro	3
Audubon Boro	7
Barrington Boro	7
Bayonne City	23
Belleville Twp	13
Bellmawr Boro	19
Bergenfield Boro	6
Beverly City	3
Bloomfield Twp	17
Bogota Boro	3
Bordentown City	1
Bordentown Twp	15
Bound Brook Boro	6
Branchburg Twp	1
Bridgewater Twp	46
Brooklawn Boro	6
Burlington City	17
Burlington Twp	17
Caldwell Boro	3
Camden City	64
Carlstadt Boro	12
Carteret Boro	20
Cedar Grove Twp	8
Cherry Hill Twp	68
Chesterfield Twp	16
Cinnaminson Twp	19
Clark Twp	11
Cliffside Park Boro	3
Clifton City	42
Collingswood Boro	10
Cranbury Twp	7
Cranford Twp	11
Delanco Twp	3
Delran Twp	10
Deptford Twp	33
Dumont Boro	6
Dunellen Boro	4
East Brunswick Twp	37
East Newark Boro	1
East Orange City	16
East Rutherford Boro	6
Eastampton Twp	6
Edgewater Boro	5
Edgewater Park Twp	6
Edison Twp	79
Elizabeth City	45
Elmwood Park Boro	12
Emerson Boro	7
Englewood City	17

**PSE&G Pole-Attached -- Count of Aggregators by Municipality -- December 2018**

<b>Municipality</b>	<b>Count of Aggregators Installed through December 2018</b>
Englewood Cliffs Boro	5
Essex Fells Twp	2
Evesham Twp	14
Ewing Twp	35
Fair Lawn Boro	17
Fairfield Twp Ess	18
Fairview Boro	5
Fanwood Boro	5
Fieldsboro Boro	1
Florence Twp	12
Fort Lee Boro	12
Franklin Twp Som	66
Garfield City	10
Garwood Boro	3
Glen Rock Boro	7
Gloucester City	10
Gloucester Twp	22
Green Brook Twp	6
Guttenberg Town	1
Hackensack City	24
Haddon Heights Boro	4
Haddon Twp	14
Haddonfield Boro	9
Hainesport Twp	3
Haledon Boro	1
Hamilton Twp Mer	88
Harrison Town	6
Hasbrouck Heights	4
Haworth Boro	2
Hawthorne Boro	10
Highland Park Boro	9
Hillsborough Twp	40
Hillsdale Boro	2
Hillside Twp	12
Hi-Nella Boro	1
Hoboken City	6
Hohokus Boro	3
Hopewell Boro	1
Hopewell Twp Mer	30
Irvington Town	17
Jersey City	62
Kearny Town	17
Kenilworth Boro	5
Lawnside Boro	4
Lawrence Twp Mer	34
Leonia Boro	2
Linden City	37
Little Falls Twp	11
Little Ferry Boro	7

**PSE&G Pole-Attached -- Count of Aggregators by Municipality -- December 2018**

<b>Municipality</b>	<b>Count of Aggregators Installed through December 2018</b>
Livingston Twp	25
Lodi Boro	11
Lumberton Twp	11
Lyndhurst Twp	12
Magnolia Boro	5
Mansfield Twp Bur	15
Manville Boro	9
Maple Shade Twp	12
Maplewood Twp	5
Maywood Boro	8
Medford Lakes Boro	3
Medford Twp	24
Merchantville Boro	1
Metuchen Boro	10
Middlesex Boro	9
Midland Park Boro	7
Millstone Boro	1
Montclair Twp	18
Montgomery Twp	36
Moonachie Boro	5
Moorestown Twp	20
Mount Ephraim Boro	4
Mount Holly Twp	9
Mount Laurel Twp	26
Mountainside Boro	8
National Park Boro	6
New Brunswick City	24
New Milford Boro	5
Newark City	112
North Arlington Boro	9
North Bergen Twp	23
North Brunswick Twp	26
North Caldwell Twp	9
North Haledon Boro	3
North Plainfield Boro	7
Nutley Town	9
Oaklyn Boro	4
Old Tappan Boro	1
Oradell Boro	3
Orange City	9
Palisades Park Boro	6
Palmyra Boro	7
Paramus Boro	23
Passaic City	17
Paterson City	47
Pemberton Twp	6
Pennington Boro	4
Pennsauken Twp	51
Perth Amboy City	26

**PSE&G Pole-Attached -- Count of Aggregators by Municipality -- December 2018**

<b>Municipality</b>	<b>Count of Aggregators Installed through December 2018</b>
Piscataway Twp	55
Plainfield City	25
Plainsboro Twp	10
Princeton Boro	7
Princeton Twp	16
Prospect Park Boro	1
Rahway City	17
Raritan Boro	5
Ridgefield Boro	4
Ridgefield Park Village	5
Ridgewood Village	9
River Edge Boro	5
River Vale Twp	1
Riverside Twp	4
Riverton Boro	3
Rochelle Park Twp	5
Rocky Hill Boro	4
Roseland Boro	10
Roselle Boro	10
Roselle Park Boro	5
Runnemede Boro	8
Rutherford Boro	8
Saddle Brook Twp	7
Scotch Plains Twp	13
Secaucus Town	17
Somerdale Boro	6
Somerville Boro	8
South Bound Brook Boro	2
South Brunswick Twp	47
South Hackensack Twp	3
South Orange Village Twp	5
South Plainfield Boro	42
Southampton Twp	23
Springfield Twp Bur	11
Teaneck Twp	17
Tenafly Boro	12
Teterboro Boro	2
Totowa Boro	12
Trenton City	56
Undefined Municipality	0
Union City	2
Union Twp Uni	27
Upper Freehold Twp	2
Verona Boro	3
Voorhees Twp	8
Waldwick Boro	10
Wallington Boro	2
Warren Twp	5
Washington Twp Ber	5

**PSE&G Pole-Attached -- Count of Aggregators by Municipality -- December 2018**

<b>Municipality</b>	<b>Count of Aggregators Installed through December 2018</b>
Washington Twp Glo	1
Washington Twp Mer	5
Watchung Boro	14
Wayne Twp	54
West Caldwell Twp	8
West Deptford Twp	29
West New York Town	3
West Orange Twp	28
West Paterson Boro	9
West Windsor Twp	23
Westampton Twp	10
Westfield Town	26
Westville Boro	4
Westwood Boro	5
Willingboro Twp	17
Woodbridge Twp	90
Woodbury City	13
Woodbury Heights Boro	3
Woodcliff Lake Boro	4
Woodlynne Boro	2
Wood-Ridge Boro	4
Wyckoff Twp	5
<b>Grand Totals:</b>	<b>3,165</b>